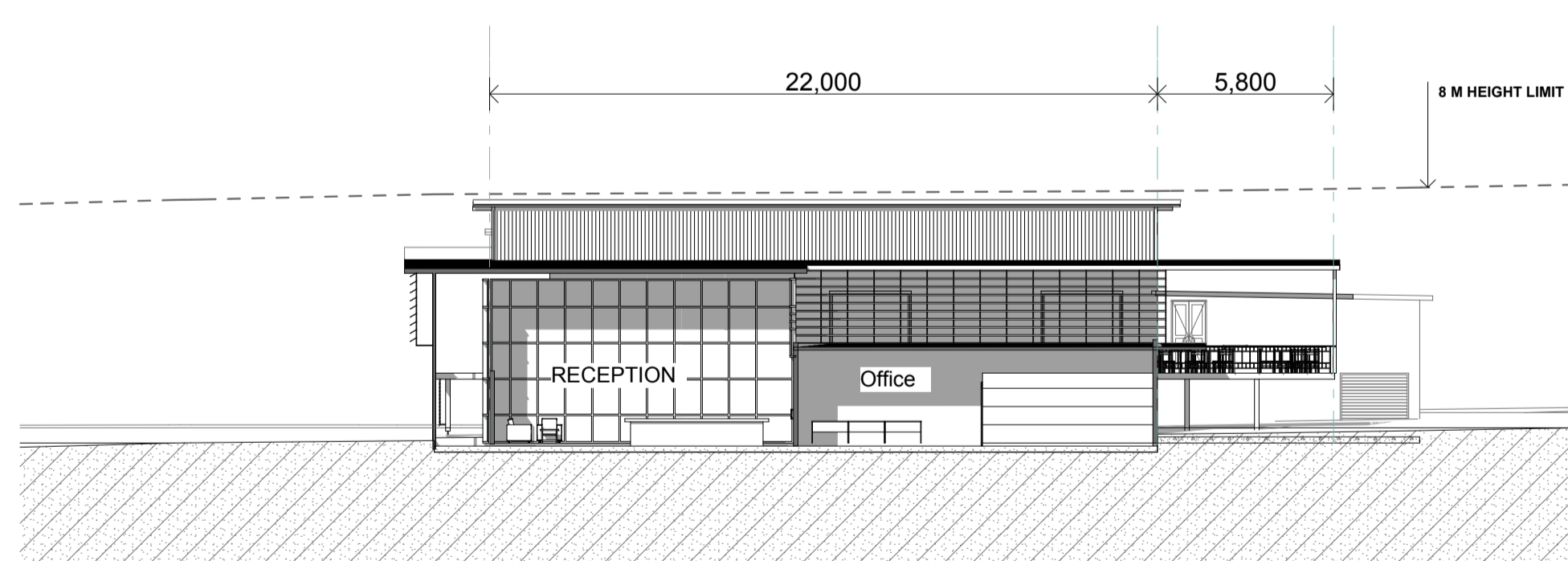


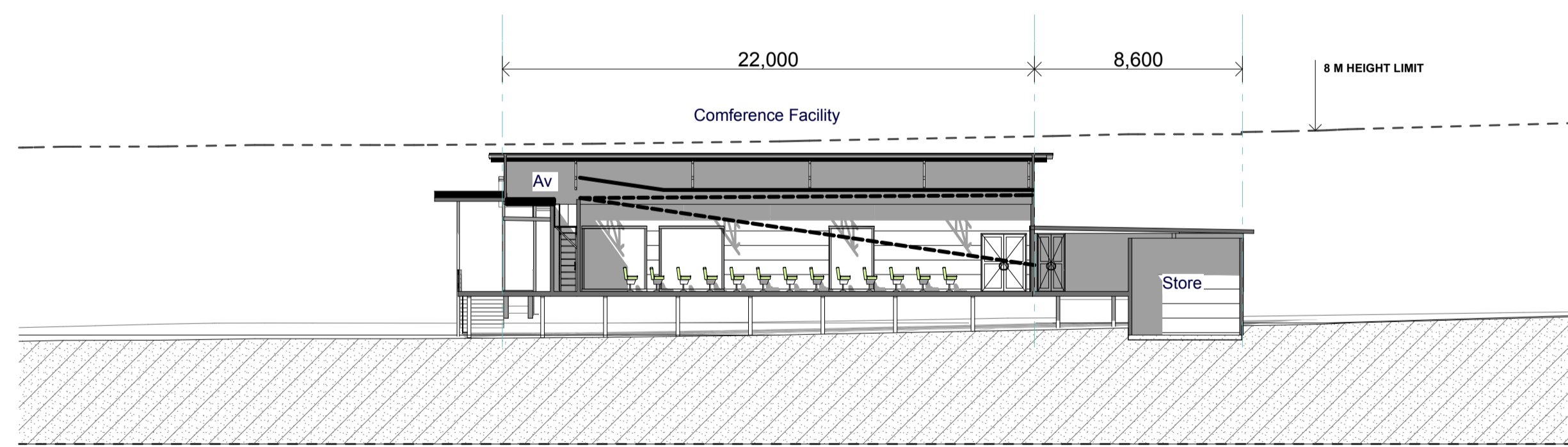
1 AA SECTION
1:200



4 AA2 SECTION
1:200



2 BB SECTION
1:200



3 BB1 SECTION
1:200

REV:	DATE:	DESCRIPTION:	ISSUED BY:
A	01.04.09	NSW DEPT OF PLANNING - DA	NK

C COPYRIGHT
 THESE DESIGNS, PLANS AND SPECIFICATIONS AND COPYRIGHT THEREIN ARE THE PROPERTY OF JMA ARCHITECTS QLD PTY LTD LEIGHTON PROPERTIES PTY LTD AND MUST NOT BE USED, COPIED OR REPRODUCED WHOLLY OR IN PART WITHOUT WRITTEN PERMISSION OF JMA ARCHITECTS QLD PTY LTD LEIGHTON PROPERTIES PTY LTD

NOTES:
 Verify all dimensions on site before the commencement of any new construction work, alterations or shop drawings - take measured dimensions in preference to any scaled dimensions
 Comply to the following or any other relevant codes:
 - Building Code of Australia
 - Local Authorities Rules and Guidelines
 - #Custom 2 covenants manual
 - Apply all applicable AUSTRALIAN STANDARDS where relevant, including:
 - Termite Barrier AS 3660.1
 - Access and Mobility Codes AS 1428.1 & 1428.2
 Larger Scale Drawings Take Precedence to smaller scale



J M A
 ARCHITECTS
 QUEENSLAND PTY LTD
 Level 1 36 Wyandra St, Newstead, Qld 4006
 P.O.Box 2716 Fortitude Valley BC, 4006 QLD
 Email: jma@jma-arch.com
 ACN: 101 165 271 ABN: 48 101 165 271
 TEL: 07 3252 4400 FAX: 07 3252 2911

CLIENT: LEIGHTON PROPERTIES
 JOB: THE KINGSCLIFF RESORT
 LOCATION: CASUARINA WAY KINGSCLIFF 2487
 PROPERTY DESCRIPTION: #ISSUE

JOB No. 1040
 DATE: APR 09
 SCALE: 1:200@ A1
 DRAWN: NK
 CHECKED: JMA Architects

DRAWING SET DRAWING TITLE: RF RESORT FACILITIES SECTIONS
 DRAWING No: 1040 RF-02-7
 ISSUE: A
 PRINT DATE: 2/04/2009

FOR SUBMISSION