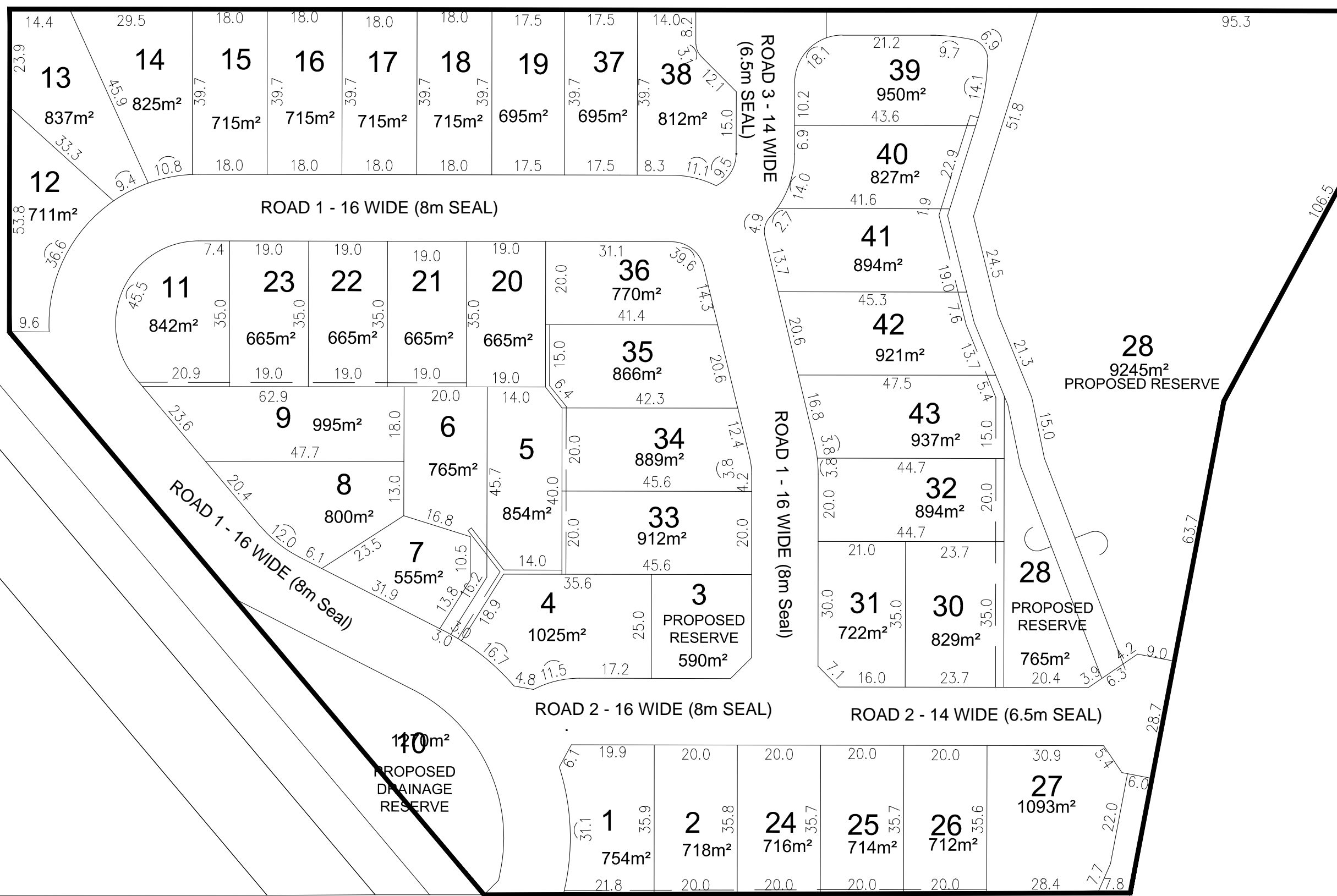


NOTE:  
LOT 29 - NOT USED



32  
D. P. 1047234

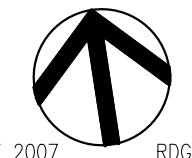
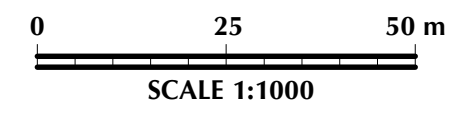
HEARNES LAKE ROAD

**de Groot & Benson** Pty Ltd  
Consulting Engineers & Planners

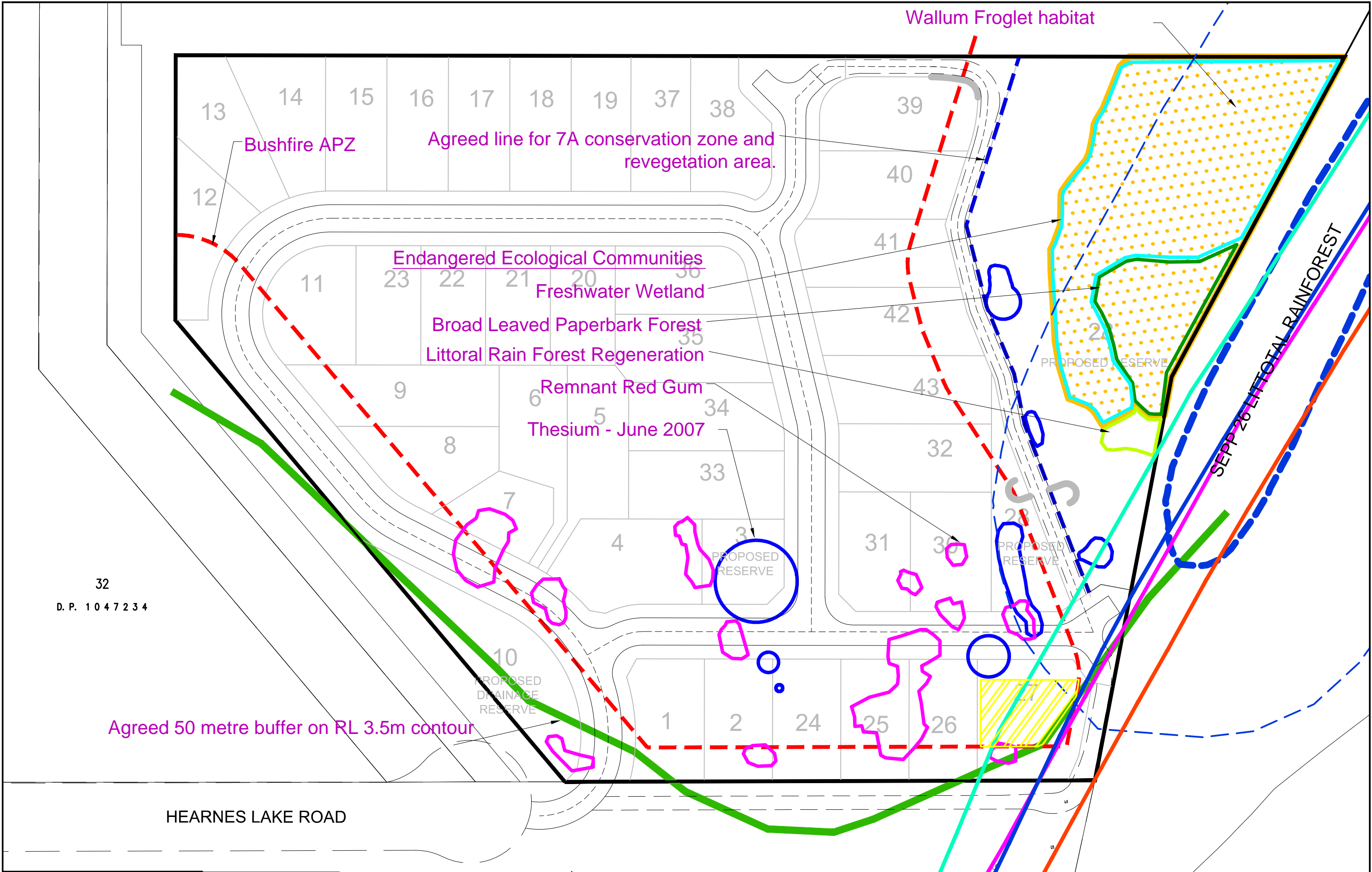
A.C.N. 052 300 571  
236 Harbour Drive  
Coffs Harbour NSW 2450

Phone (02) 6652 1700  
Fax (02) 6652 7418  
Email email@dggh.com.au

RESIDENTIAL SUBDIVISION  
LOT 21, DP714858 HEARNES LAKE ROAD, WOOLGOOLGA  
**OVERALL CONCEPT PLAN**



MAP 1  
Amendment No. 06265  
H



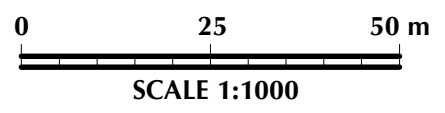
32  
D. P. 1047234

**de Groot & Benson** Pty Ltd  
Consulting Engineers & Planners

A.C.N. 052 300 571  
236 Harbour Drive  
Coffs Harbour NSW 2450

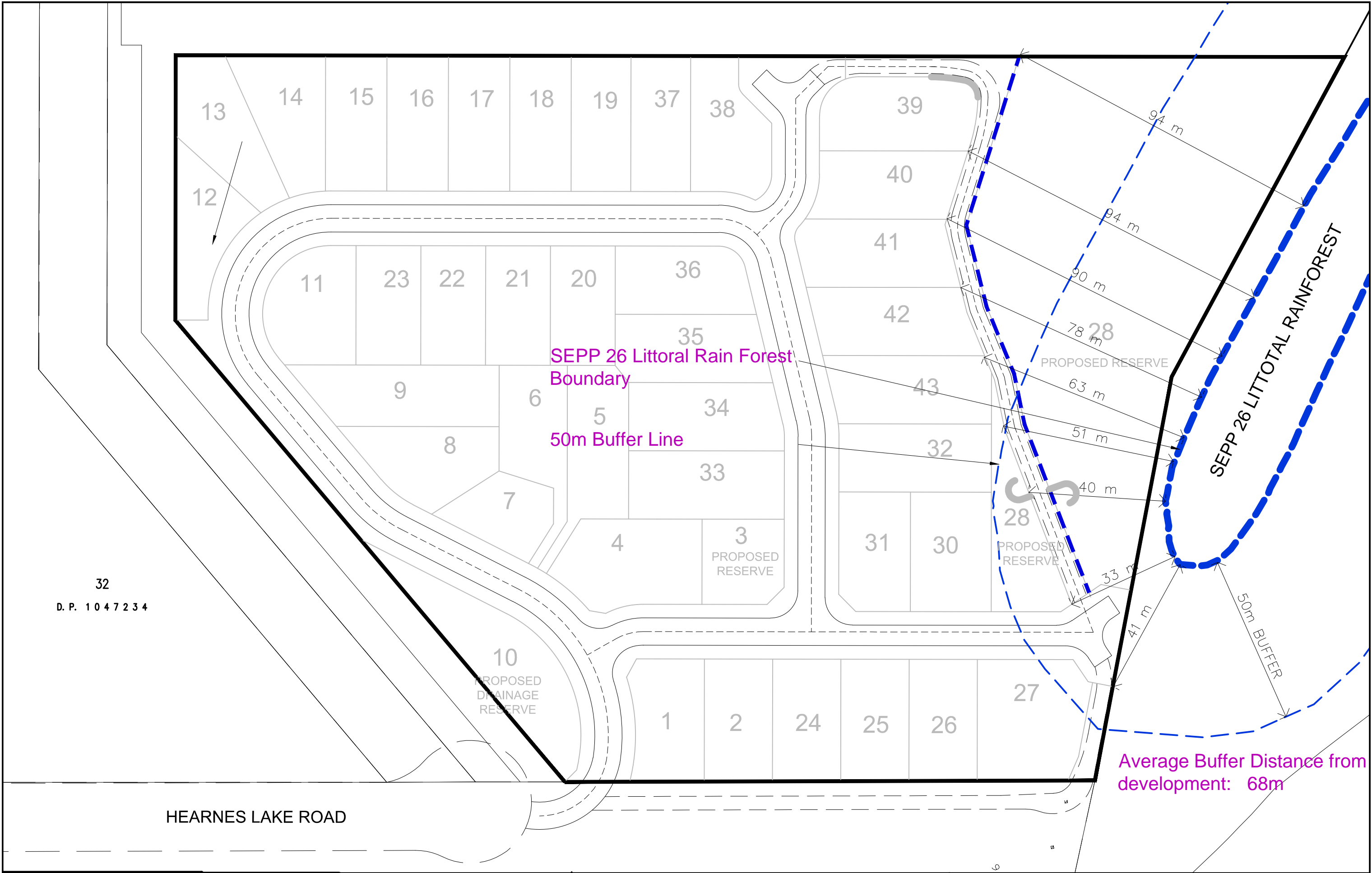
Phone (02) 6652 1700  
Fax (02) 6652 7418  
Email email@dgpb.com.au

RESIDENTIAL SUBDIVISION  
LOT 21, DP714858 HEARNES LAKE ROAD, WOOLGOOLGA  
PLANNING NSW - CONSTRAINTS PLAN



MAP 20  
06265  
Amendment No.  
G

6 JULY 2007 RDG

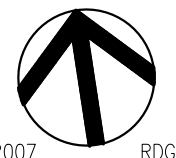
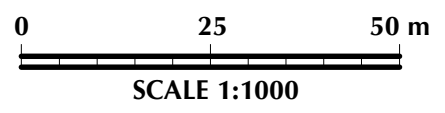


32  
D. P. 1047234

HEARNES LAKE ROAD

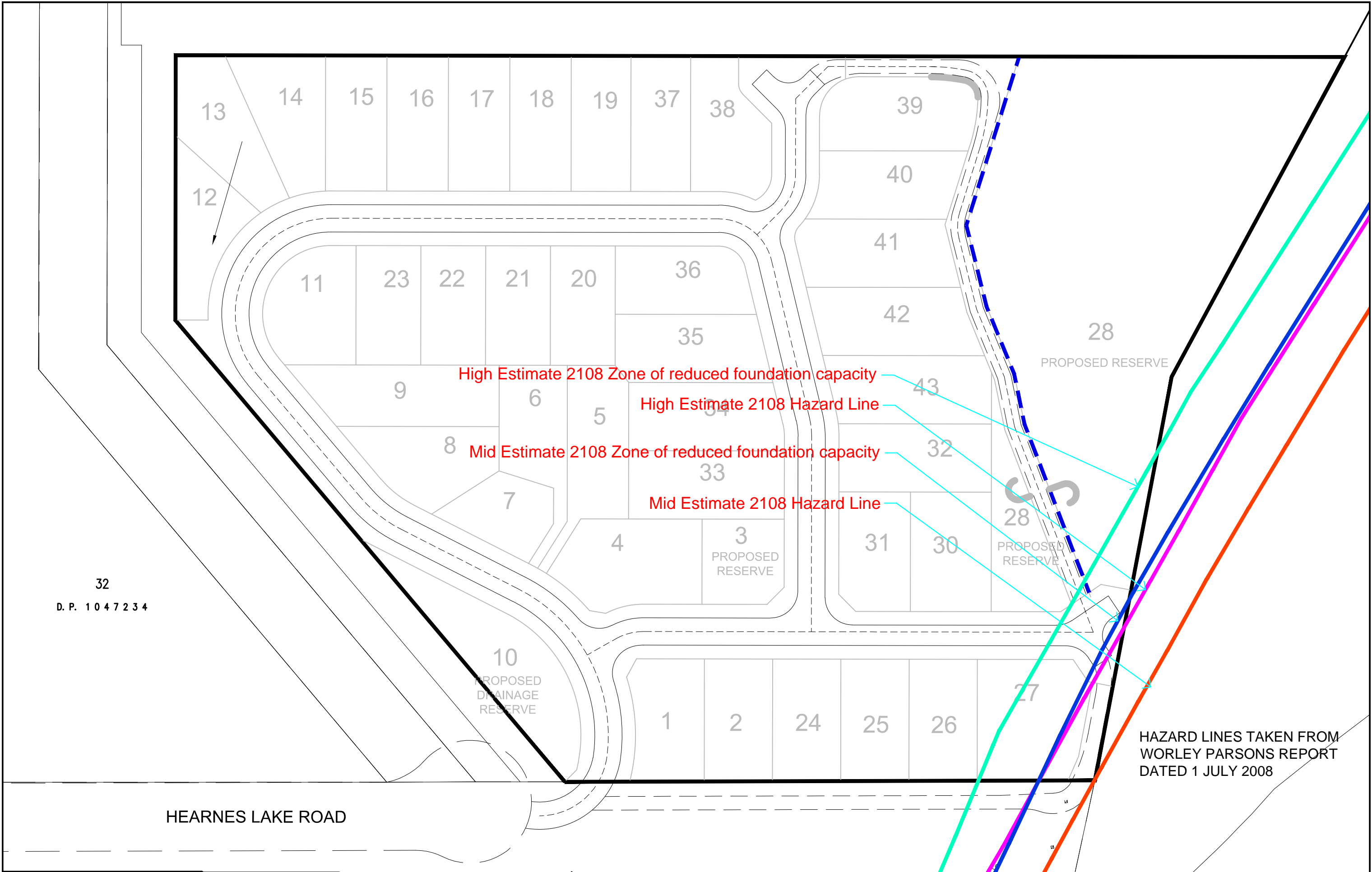
**de Groot & Benson** Pty Ltd  
 Consulting Engineers & Planners  
 A.C.N. 052 300 571  
 236 Harbour Drive  
 Coffs Harbour NSW 2450  
 Phone (02) 6652 1700  
 Fax (02) 6652 7418  
 Email email@dgbc.com.au

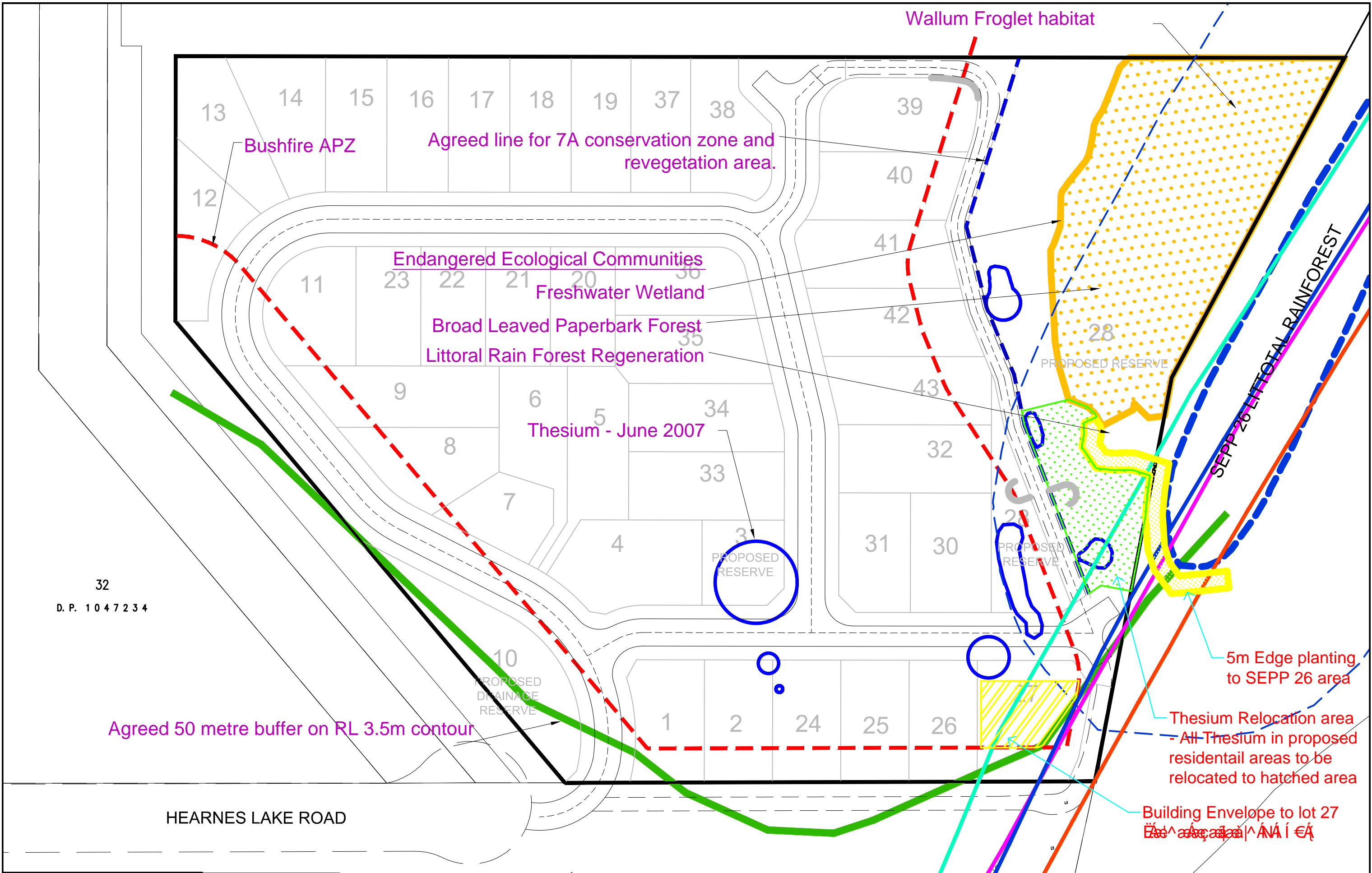
RESIDENTIAL SUBDIVISION  
 LOT 21, DP714858 HEARNES LAKE ROAD, WOOLGOOLGA  
**SEPP 26 - LITTORAL RAIN FOREST**



MAP 24  
 06265  
 Amendment No.  
**G**

6 JULY 2007 RDG



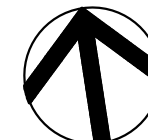
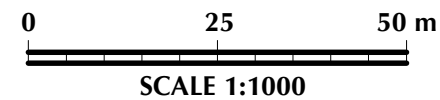


32  
D. P. 1047234

Agreed 50 metre buffer on RL 3.5m contour

HEARNES LAKE ROAD

RESIDENTIAL SUBDIVISION  
 LOT 21, DP714858 HEARNES LAKE ROAD, WOOLGOOLGA  
 Flora - Fauna Management Controls



MAP 26  
 06265  
 Amendment No.  
 G

6 JULY 2007 RDG

**de Groot & Benson** Pty Ltd  
 Consulting Engineers & Planners  
 A.C.N. 052 300 571  
 236 Harbour Drive  
 Coffs Harbour NSW 2450  
 Phone (02) 6652 1700  
 Fax (02) 6652 7418  
 Email email@dgpb.com.au