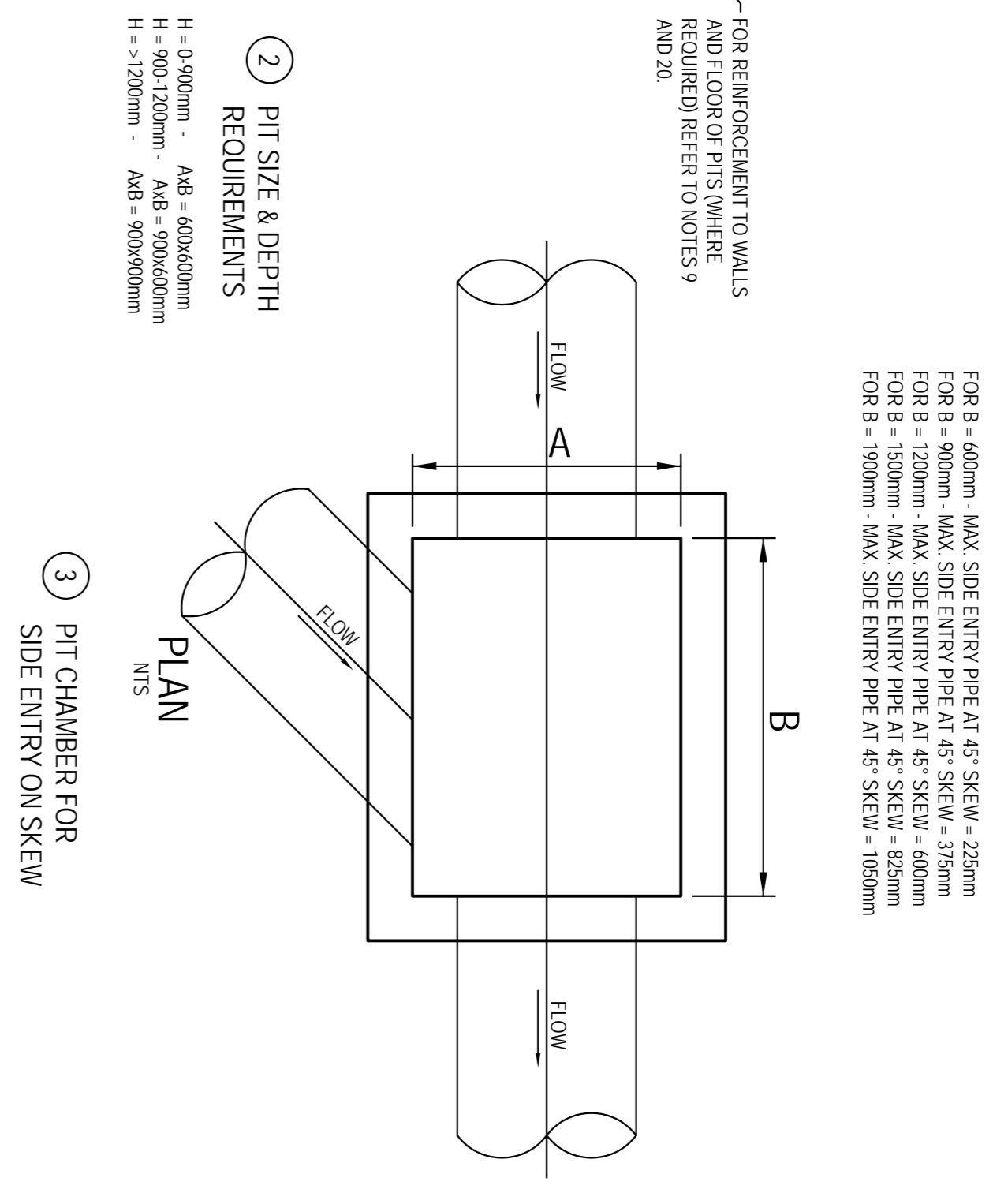
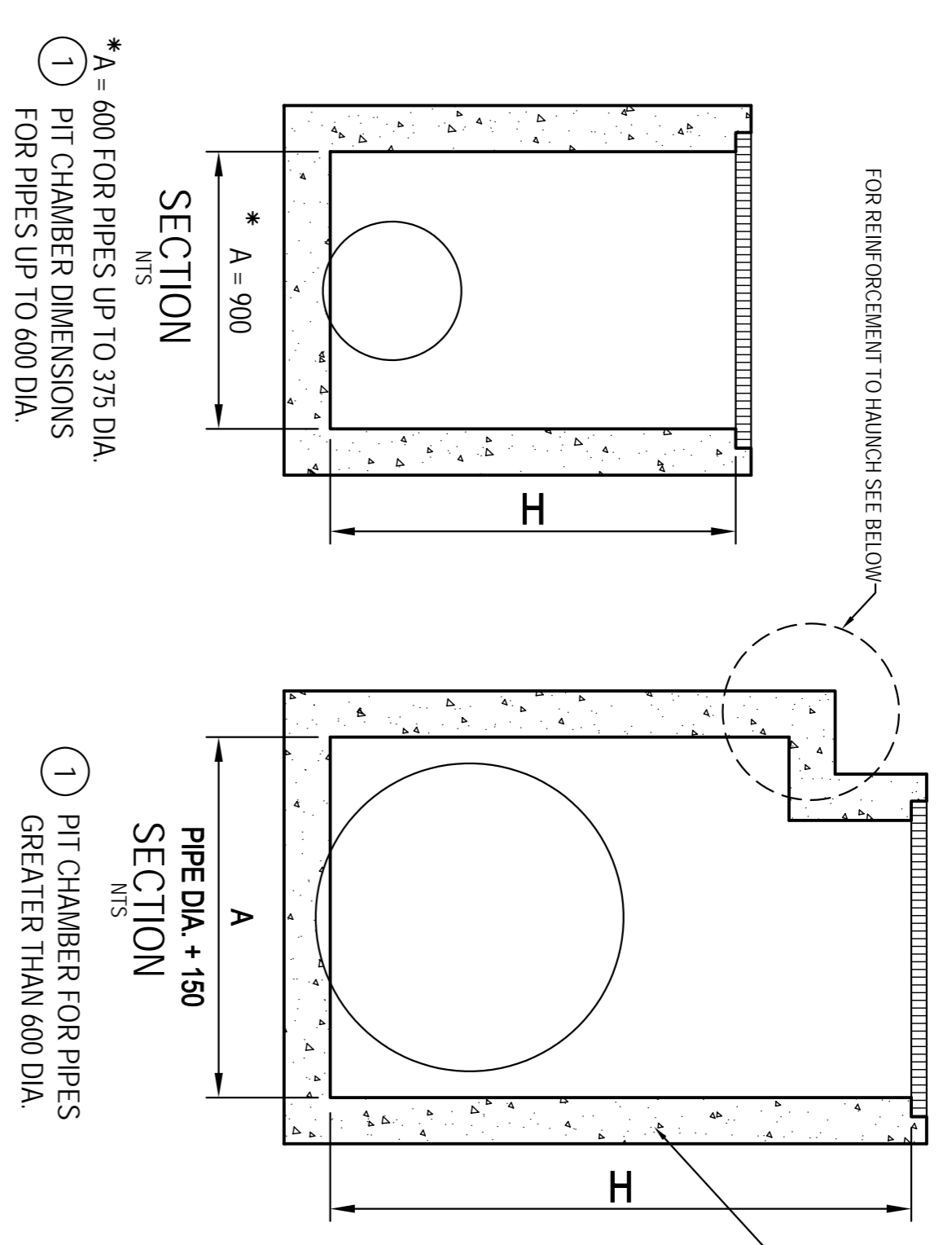


TYPICAL PIT CHAMBER SIZES
IT IS THE CONTRACTORS RESPONSIBILITY TO SELECT PIT CHAMBER SIZE WITH REGARDS TO PIPE SIZE, DEPTH TO INVERT AND SKEW ANGLE. REFER SKETCHES BELOW.

- ① SELECT PIT CHAMBER USING THE STEPS BELOW:
- ② SELECT PIT CHAMBER SIZE PER DESIGNATED PIPE PARAMETERS
- ③ CHECK PIT CHAMBER SIZE TO SATISFY DEPTH TO INVERT REQUIREMENTS
- ④ CHECK PIT CHAMBER DIMENSIONS TO SATISFY THE SKEW ANGLE IN THE TABLE.



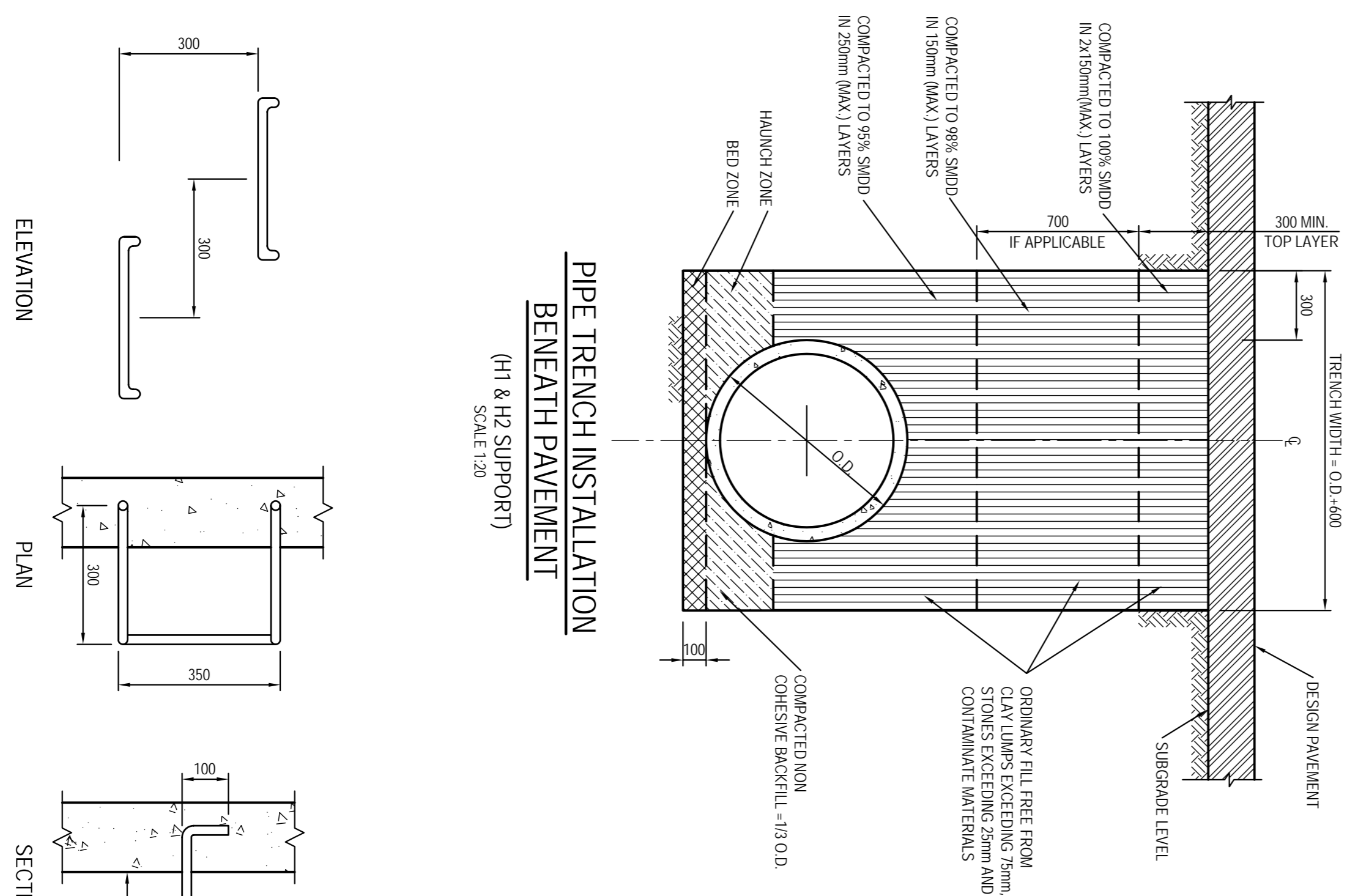
PIT LID SCHEDULE

PIT/STRUCTURE NUMBER	DESCRIPTION			
A-1	B-1	INLET PIT WITH 1200x1200 HINGED MEDIUM DUTY GRATED LID CLASS 'C' IN ACCORDANCE WITH WOLLONGONG CITY COUNCIL REQUIREMENTS		
A-2	B-3	C-3	INLET PIT WITH 600x600 HINGED MEDIUM DUTY GRATED LID CLASS 'C' IN ACCORDANCE WITH WOLLONGONG CITY COUNCIL REQUIREMENTS	
A-3	A-4	A-5	B-4	JUNCTION PIT WITH 600x600 BOLT DOWN MEDIUM DUTY CONCRETE LID
E-1	E-2	E-3	E-4	300mm WIDE LIGHT DUTY GRATED DRAIN AND LIGHT DUTY FRAME CLASS 'X'
D-1	450mm WIDE MEDIUM DUTY GRATED DRAIN AND MEDIUM DUTY FRAME CLASS 'D'			
C-1	OSD DISCHARGE CONTROL PIT WITH 900x900 HINGED MEDIUM DUTY GRATED LID CLASS 'C' IN ACCORDANCE WITH WOLLONGONG CITY COUNCIL REQUIREMENTS.			
C-2	CONSTRUCTED INLET WITH TWO 600x600 HINGED MEDIUM DUTY GRATED LIDS CLASS 'C' IN ACCORDANCE WITH WOLLONGONG CITY COUNCIL REQUIREMENTS.			

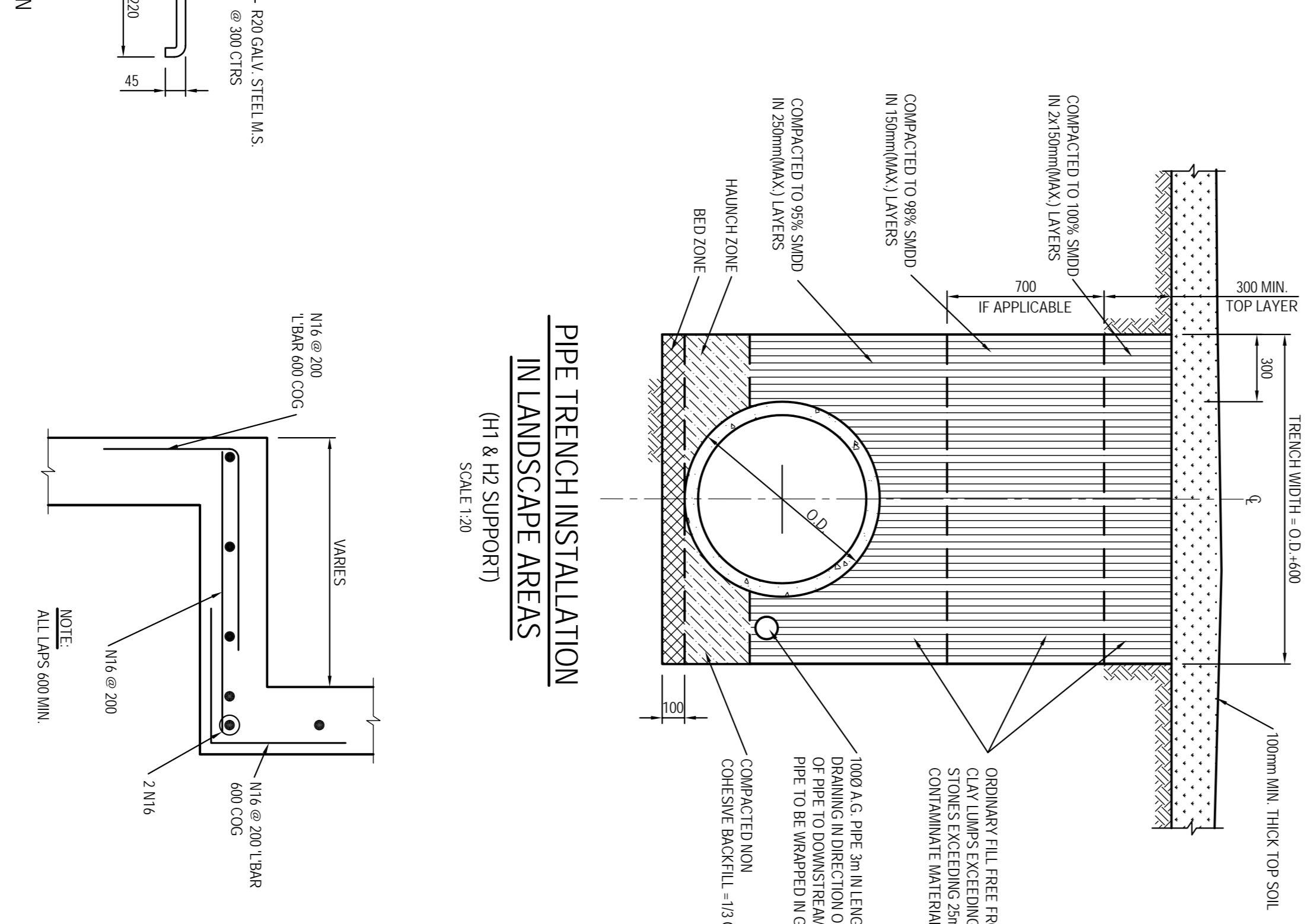
STORMWATER DRAINAGE NOTES:

1. STORMWATER DESIGN CRITERIA: THE STORMWATER DESIGN SHOWN ON THESE DRAWINGS HAS BEEN CARRIED OUT IN ACCORDANCE WITH AUBURN COUNCIL'S REQUIREMENTS AND AUSTRALIAN RAINFALL AND RUNOFF (RARRO) GUIDELINES.
2. PIPES 300 DIA. AND LARGER TO BE REINFORCED CONCRETE CLASS 7 APPROVED SPOUT AND SOCKET WITH RUBBER RING JOINTS UNL.O.
3. PIPES UP TO 300 DIA. SHALL BE SEWER GRADE UPVC WITH SOLVENT WELDED JOINTS.
4. EQUIVALENT STRENGTH VCP OR FRC PIPES MAY BE USED.
5. PIPES SHALL BE Laid ON A 75MM THICK SAND BED. IN ALL CASES BACKFILL TRENCH WITH SAND TO 200MM ABOVE THE PIPE. WHERE PIPE IS UNDER PAVEMENTS BACKFILL REMAINDER OF TRENCH TO UNDERSIDE OF PAVEMENT WITH SAND OR APPROVED GRANULAR MATERIAL COMPACTED IN 150MM LAYERS TO 98% STANDARD MAXIMUM DRY DENSITY IN ACCORDANCE WITH AS 1289 5.2.1 (OR A DENSITY INDEX OF NOT LESS THAN 75).
6. APPROVED PRECAST CONCRETE PITS INSIDE PROPERTY BOUNDARIES MAY BE USED IN LIEU OF CAST IN SITU PITS WHERE SUITABLE.
7. WHERE TRENCHES ARE IN ROCK THE PIPE SHALL BE BEDDED ON A MINIMUM OF 50MM CONCRETE BED (OR 75MM BED OF 12MM BLUE METAL) UNDER THE BARREL OF THE PIPE.
8. ENLARGERS, CONNECTIONS AND JUNCTIONS TO BE PREFABRICATED FITTINGS WHERE PIPES ARE LESS THAN 300 DIA.
9. WHERE SUBSOIL DRAINS PASS UNDER THE FLOOR SLABS AND VEHICULAR PAVEMENTS, UNSLOTTED UPVC SEWER GRADE PIPE IS TO BE USED.
10. CARE IS TO BE TAKEN WITH LEVELS OF STORMWATER LINES. GRADES SHOWN ARE NOT TO BE REDUCED WITHOUT APPROVAL.
11. GRATES AND COVERS SHALL CONFORM TO ASS996 - 1992 AT ALL TIMES DURING CONSTRUCTION OF THE STORMWATER PITS.
12. ADEQUATE SAFETY PROCEDURES SHALL BE IMPLEMENTED TO PREVENT PERSONNEL FALLING INTO OPEN PITS.
13. EXISTING STORMWATER PIPE LOCATIONS AND INVERT LEVELS TO BE CONFIRMED PRIOR TO COMMENCEMENT OF CONSTRUCTION.
14. ALL EXISTING STORMWATER DRAINAGE LINES AND PITS THAT ARE TO REMAIN ARE TO BE INSPECTED AND CLEANED DURING THIS PROCESS. ANY PART OF THE STORMWATER DRAINAGE SYSTEM THAT WARRANTS REPAIR SHALL BE REPORTED TO THE SUPERINTENDENT FOR FURTHER DIRECTIONS.
15. AREAS AND ROAD PAVEMENTS.

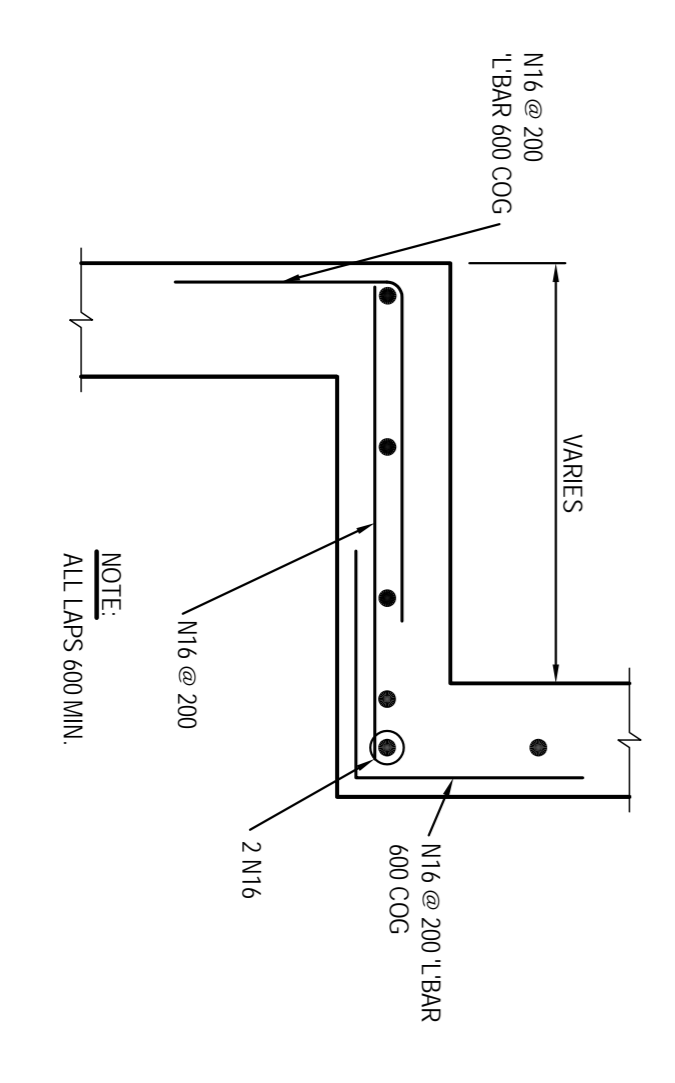
PIPE TRENCH INSTALLATION BENEATH PAVEMENT
 (H1 & H2 SUPPORT)
 SCALE 1:20



PIPE TRENCH INSTALLATION IN LANDSCAPE AREAS
 (H1 & H2 SUPPORT)
 SCALE 1:20



HAUNCH DETAIL - TYPICAL
 N.T.S.



REVISION	ISSUED FOR	DATE	REVISION	AMENDMENT	DATE	REVISION	AMENDMENT
01	ISSUED FOR DA ONLY	01/04/2010					

HENRY & HYMAS
 LEVEL 5 79 VICTORIA AVENUE
 CHATSWOOD NSW 2067
 Phone: 02 9417 6400
 Fax: 02 9417 8337
 Email: email@henryandhymas.com.au
 Web: www.henryandhymas.com.au
 Sydney Melbourne Gold Coast Adelaide

PROPOSED PRIVATE HOSPITAL
 360-364 CROWN STREET WOLLONGONG
 THE STORMWATER MISCELLANEOUS DETAILS & PIT LID SCHEDULE

Checked	Designed	Date
J.L.H.	S. COCHRAN	MAR 2010
T. DEMPSEY	A. FRANKS	N.T.S.

10024_DA_C200 01

FOR DA ONLY