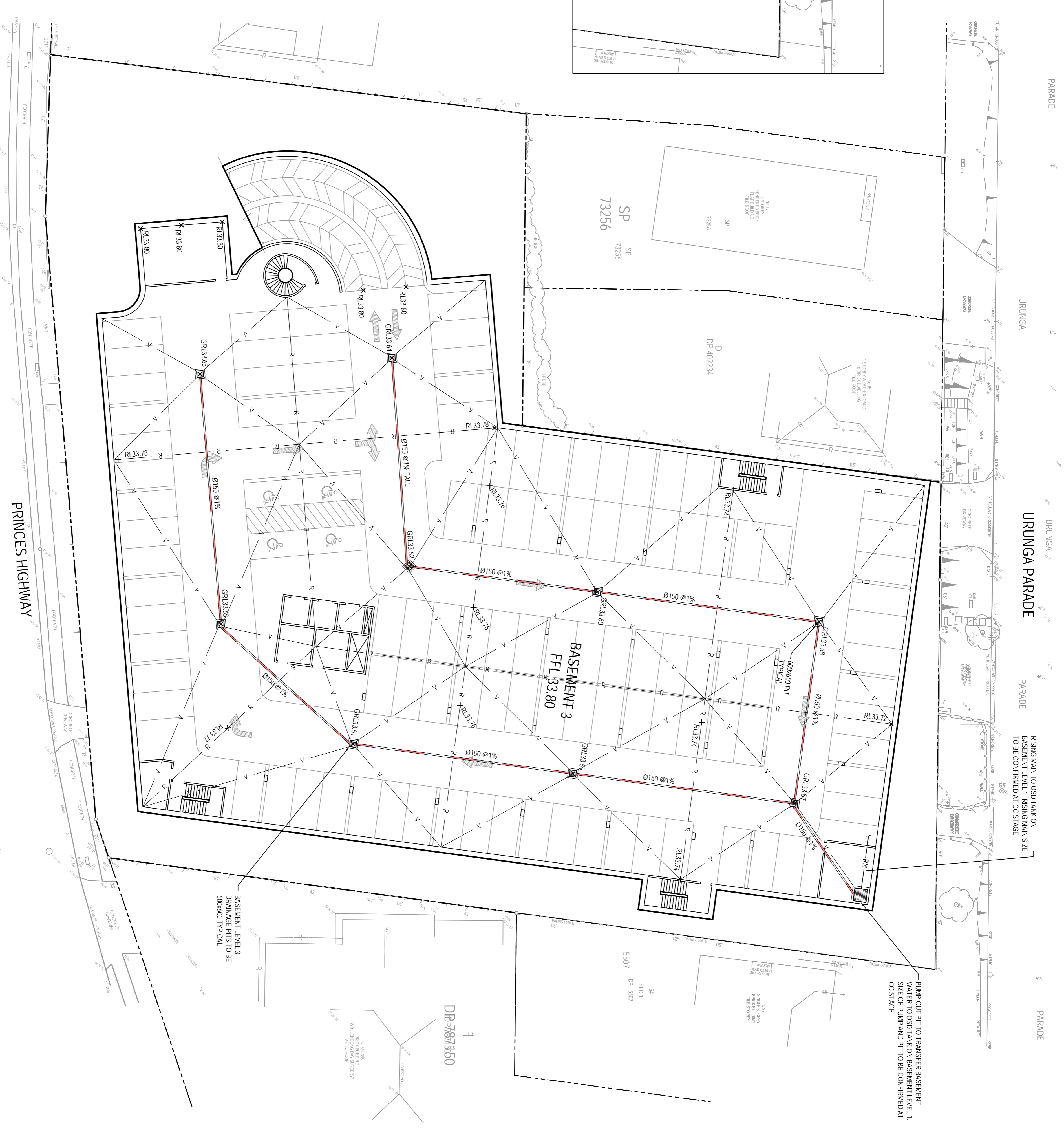


GENERAL ARRANGEMENT PLAN - BASEMENT LEVEL 1
SCALE: 1:200



GENERAL ARRANGEMENT PLAN - BASEMENT LEVEL 3
SCALE: 1:200

FOR DA ONLY



Client	AA CROWN HOLDINGS PTY LTD	Project	PROPOSED PRIVATE HOSPITAL 360-364 CROWN STREET WOLLONGONG
Architect	MURPHY'S ARCHITECTURE PTY LTD	Title	GENERAL ARRANGEMENT PLAN BASEMENT LEVEL 1 & BASEMENT LEVEL 3
Engineer	HENRY & HYMAS	Drawn	JLL
Checked		Checked	T Dampney
Approved		Approved	A Francis
Date		Date	MAR 2010
Revision		Scale	1:200 @ A1
Revision		Revision	01

REVISION	AMENDMENT	DATE	REVISION	AMENDMENT	DATE
01	ISSUED FOR DA ONLY	01/04/2010			

HENRY & HYMAS
LEVEL 5 79 VICTORIA AVENUE
CHATSWOOD NSW 2067
Phone: 02 9417 6400
Fax: 02 9417 8337
Email: enquiries@henryandhymas.com.au
Web: www.henryandhymas.com.au
Golder Associates Ltd
Golder.com.au

FOR DA ONLY

10024_DA_C101 01