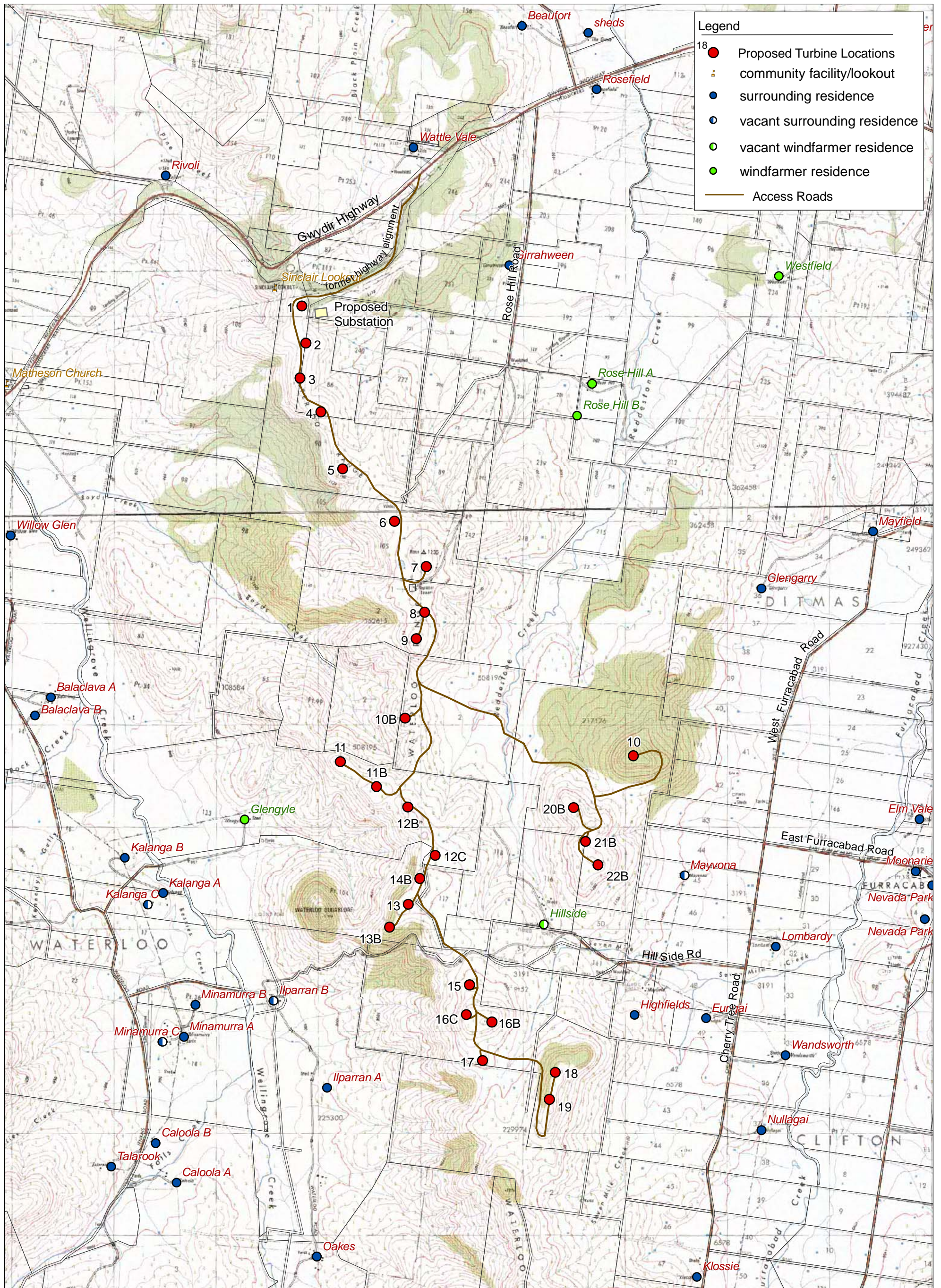


Figure 1

Locality Map



Source: Lands Department

Figure 2

Project Layout

ARMIDALE N.S.W.

LATITUDE: 30.5 deg SOUTH

LONGITUDE: 151.6 deg EAST

REFERENCE LONGITUDE FOR STANDARD TIME: 150.0 deg EAST

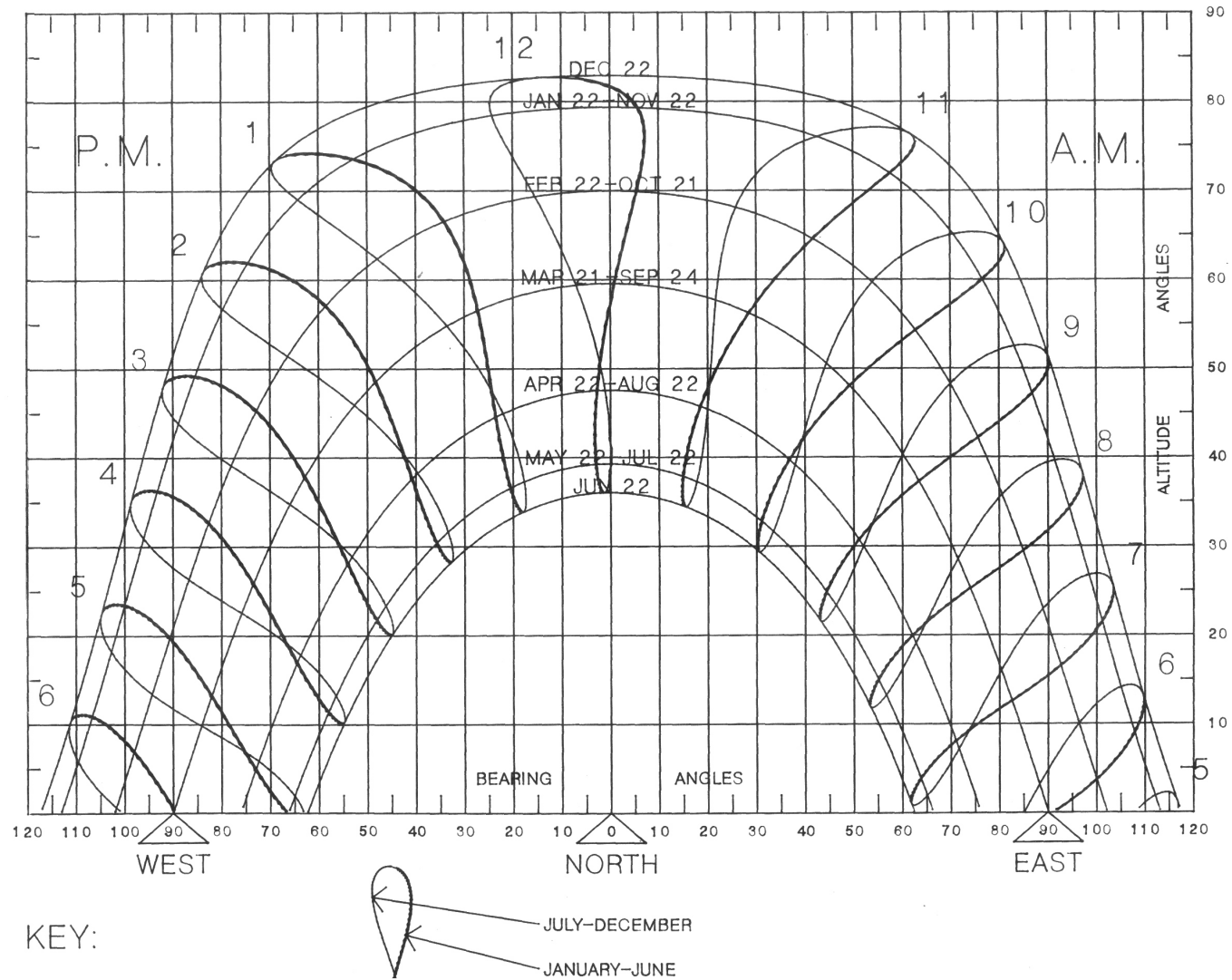
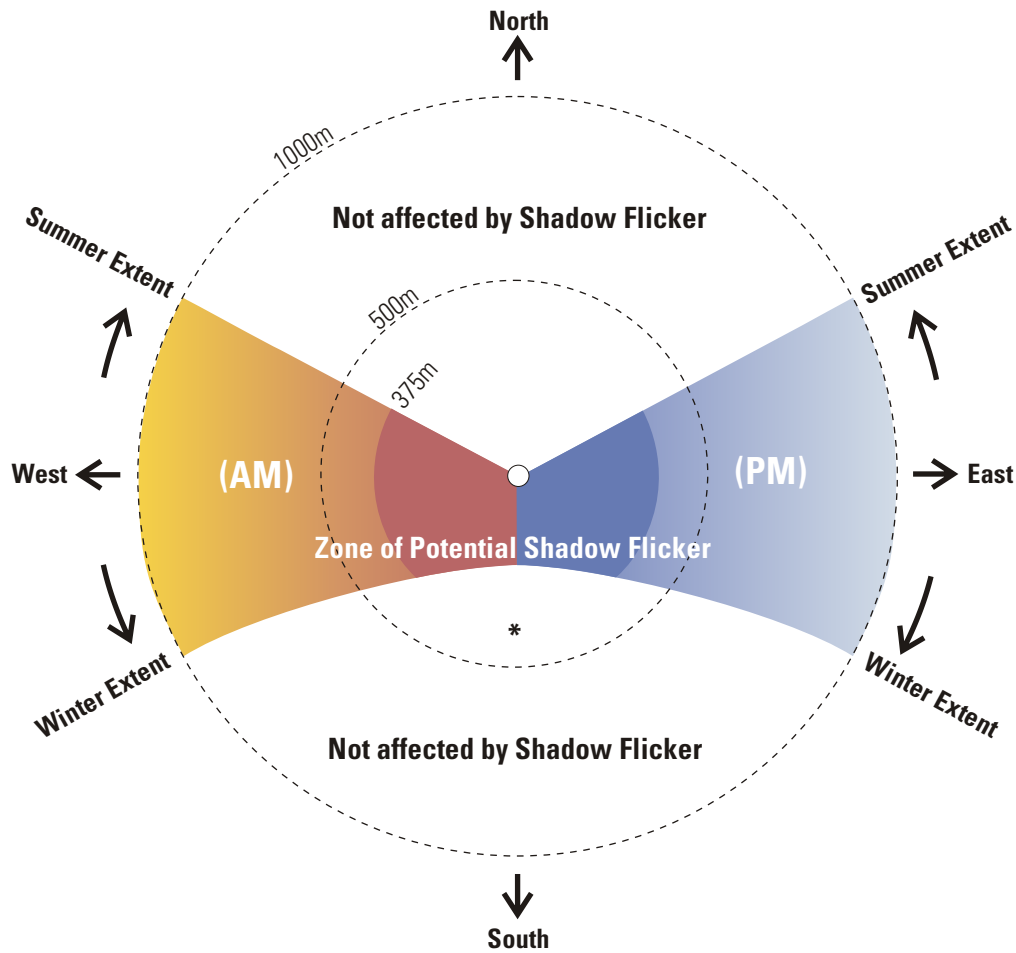
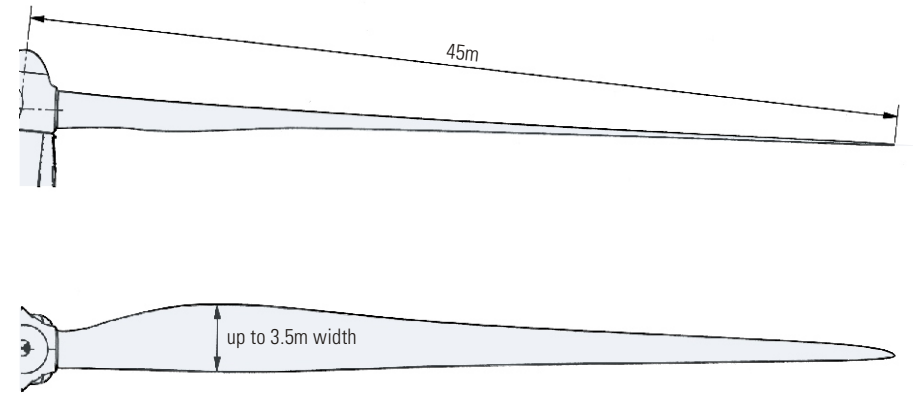


Figure 5
Sun Chart Diagram

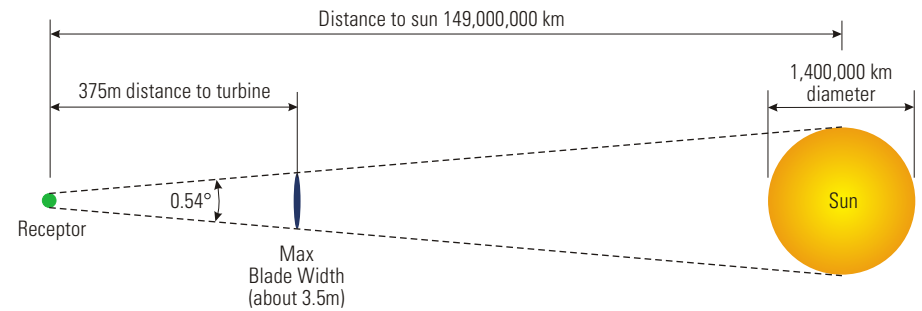




A – Approximate zone of potential Shadow Flicker Effect around a single Turbine
 (* for turbine base 100m above receiver)



B – Blade profiles



C – Schematic illustration of shadow cast by turbine blade



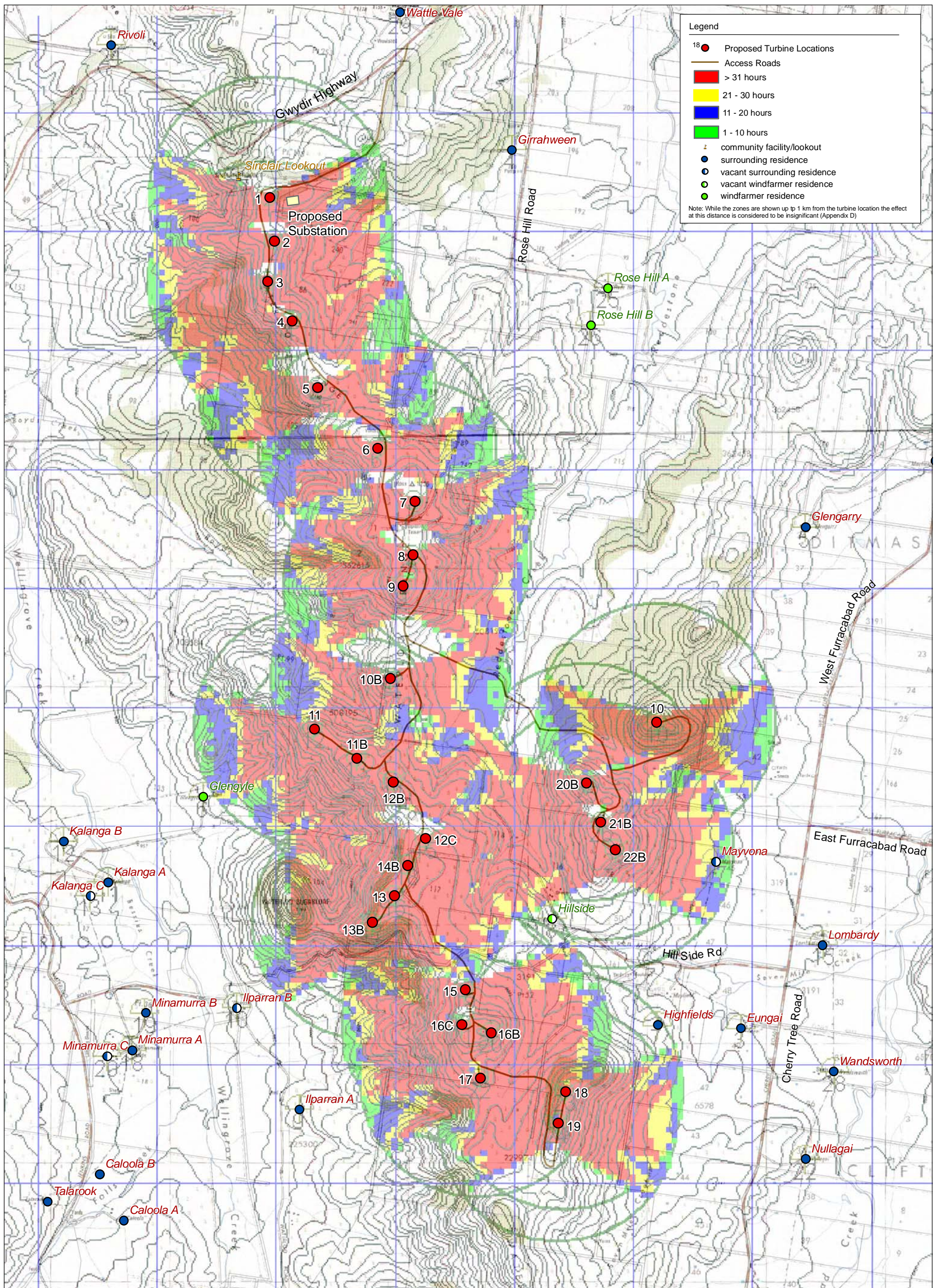
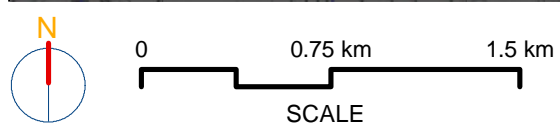


Figure 7

Potential Shadow Flicker Zone



Source: Lands Department