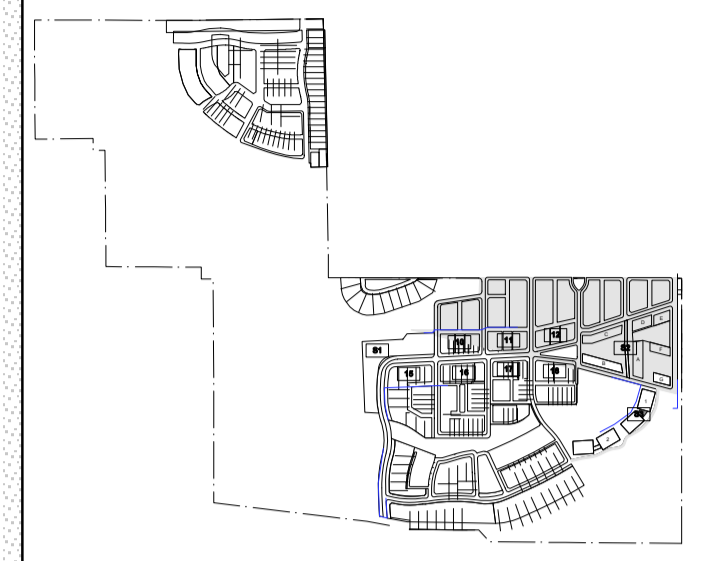


NOTES:
 Builder / Contractor shall verify job dimensions before any job commences.
 Figured dimensions take precedence over drawings and job dimensions.
 All shop drawings shall be submitted to the Architect/Consultant, and manufacture shall not commence prior to return of inspected shop drawings by the Architect/Consultant.
 All wall set-out dimensions (14 series and 50-59 series drawings) are dimensioned to the external faces of the studs.



KEY PLAN

KEY	LAUNDRY	L/D	LIVING/DINING
LDY	BALCONY	K	KITCHEN
B	BEDROOM1	STO	STORAGE
B1	BEDROOM2	AC	AIR CONDITIONING
B2	BEDROOM3	CPE	CARPARK EXHAUST
B3			

REVISIONS:

NO.	DESCRIPTION	DATE
DA/2	DA/Amended Brief	04.09.08
DA2	REVISED DA ISSUE	08.12.08
DA	DA ISSUE	14.6.07
SK3	CLIENT/CONSULTANT ISSUE	1.6.07
SK2	CLIENT/CONSULTANT ISSUE	21.5.07
SK1	CLIENT ISSUE	7.5.07

CONSULTANT TEAM

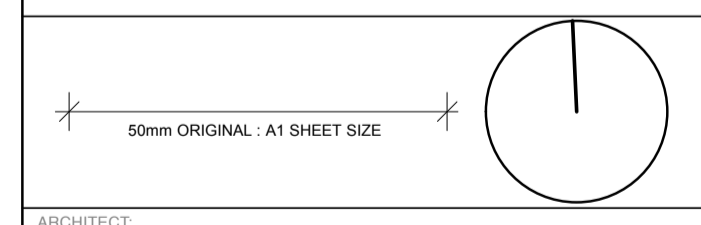
PLANNING/LANDSCAPE ARCHITECTURE: EDAW 1/14 Mountain St Ultimo NSW 2007 T (02) 9212 3666 F (02) 9212 4499 ACN 005 886 306 E john.edwards@edaw.com E john.edwards@edaw.com	ARCHITECTURE - MASTERPLANNING: dKO Architecture 1/14 Mountain St Ultimo NSW 2007 ABN 54 740 188 257 Contact: Jeff Edwards (Architecture - houses) David Sadowski (Masterplanning) T (02) 9290 2244 F (02) 9290 2264 E jefr@dko.com.au
ARCHITECTURE (BUILDING): Stanic Harding 123 Commonwealth St Surry Hills NSW 2010 ACN 003 681 301 Contact: Andy Stanic - Director T (02) 9211 6710 F (02) 9211 0366 M 0414 616 686 E andy@stancharding.com.au	ARCHITECTURE (apartments): Durbach Block Architects Level 5, 71 York Street Sydney NSW 2000 Australia Tel (02) 8297 3500 Fax (02) 8297 3510 mail@durbachblock.com

CIVIL / ACOUSTIC ENGINEERING: Hyder Consulting L2, 141 Walker St North Sydney NSW 2060 ABN 76 104 485 289 Contact: John McDermott - Associate T (02) 8907 9000 F (02) 8907 9001 M 0488 031 971 E john.mcdermott@hyderconsulting.com	ARCHITECTURE (apartments): Durbach Block Architects Level 5, 71 York Street Sydney NSW 2000 Australia Tel (02) 8297 3500 Fax (02) 8297 3510 mail@durbachblock.com
TRANSPORT PLANNING: GTA Consultants L/1, 315 Pacific Hwy Chatswood NSW 1585 ACN 005 839 645 Contact: Alan Stewart - Project Manager T (02) 9422 4010 F (02) 9422 4010 E alan.stewart@gtaplanning.com.au	ARCHITECTURE (apartments): Durbach Block Architects Level 5, 71 York Street Sydney NSW 2000 Australia Tel (02) 8297 3500 Fax (02) 8297 3510 mail@durbachblock.com

SPHERE PROPERTY CORPORATION: Suite 10, Quay West Centre 96 Gloucester St Sydney NSW 2000 ABN 55 903 463 401 Contact: John Spenser - Managing Director T (02) 9252 7000 F (02) 9252 7000 M 0418 293 022 E john.spenser@spherecorp.com.au	EVANS & PECK: Unit 20, 390 Eastern Valley Way East Roseville NSW 2059 ACN 098 008 818 Contact: Steve Peters - Principal T (02) 9882 0500 F (02) 9417 8850 M 0413 048 400 E speters@evanspeck.com
AUSTRALIAN BUSHFIRE PROTECTION PLANNERS: RMB 311 Dog Track Rd Somersby NSW 2250 ACN 083 610 173 Contact: Graham Swain - Principal T (02) 4362 2112 F (02) 4362 2204 M 0417 622 304 E alsop@bgspond.net.au	SYDNEY ENVIRONMENTAL & SOIL LABORATORY: 16 Drivers Rd Pennant Hills NSW 2120 PO Box 337 Pennant Hills NSW 2115 ACN 106 810 708 Contact: Simon Leake - Principal T (02) 9890 6554 F (02) 9484 2427 M 0409 126 729 E simon@seil.com.au

CITY PLAN HERITAGE: Keystone Ecological PO Box 5093, Empire Bay NSW 2257 ACN 099 456 149 Contact: Elizabeth Ashby - Senior Ecologist T (02) 4368 1106 F (02) 4368 2361 E e.ashby@keystone-ecological.com.au	INDIGENOUS ARCHAEOLOGY: NSW Archaeology Pty Ltd
--	---

ACCESSIBILITY CONSULTANT:
Moruya Going Accessibility Consultants
Unit 106, 58 Bowman St The Coopersage Pyrmont NSW 2009
ABN 70 414 330 060
Contact: David Goding
T (02) 9602 3122 F (02) 9692 8433
E david@gmac.com.au



ARCHITECT:
DBA
 Durbach Block Architects
 LEVEL 5
 71 YORK STREET
 SYDNEY NSW 2000

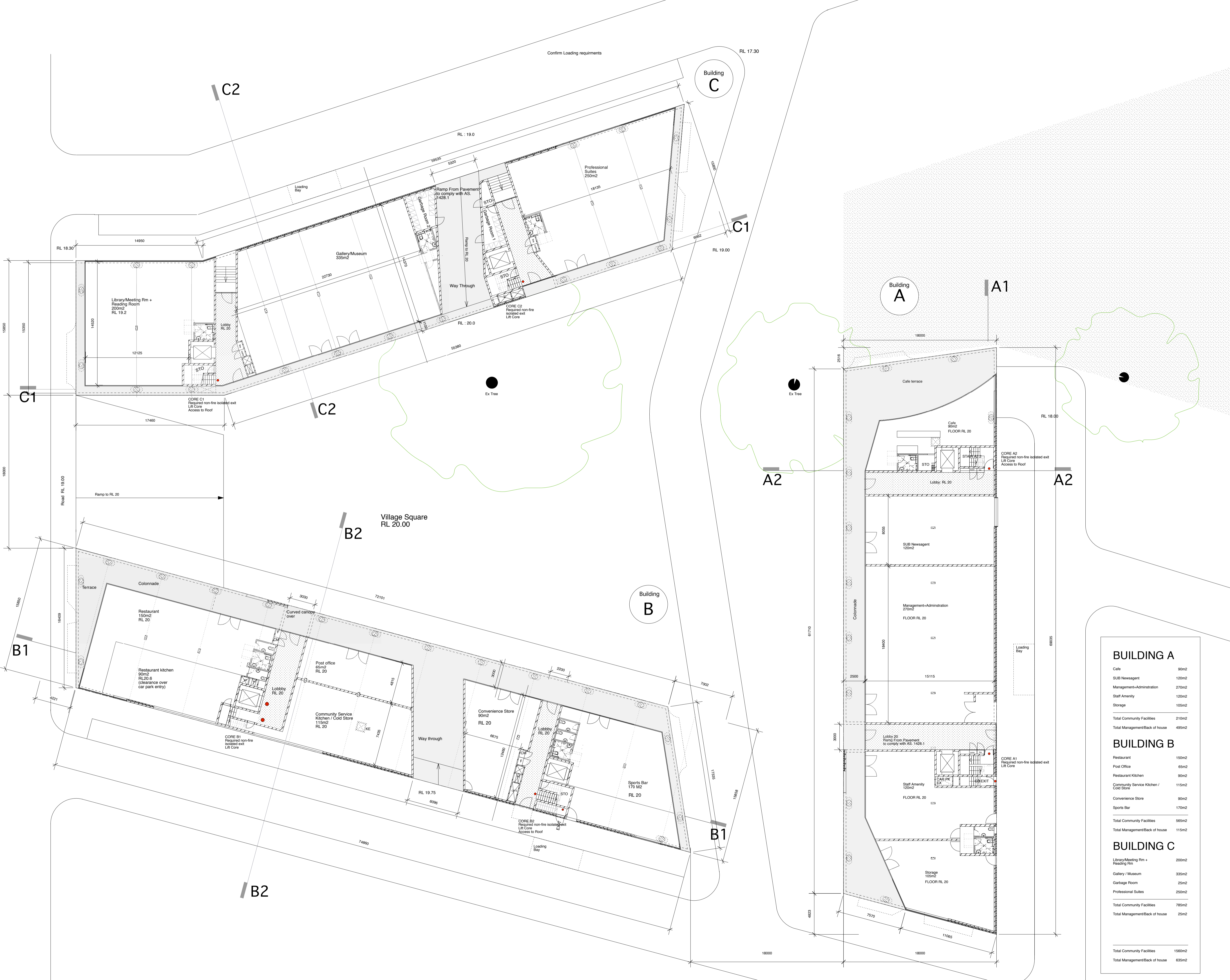
© DURBACH BLOCK ARCHITECTS. EXCEPT AS ALLOWED UNDER COPYRIGHT ACT, NO PART OF THIS DRAWING MAY BE REPRODUCED OR OTHERWISE DEALT WITH WITHOUT WRITTEN PERMISSION OF DBA.

PROJECT DETAILS:
 Moruya East Village
 -
 Moruya Village Square
 -

DRAWING TITLE:
GROUND FLOOR

DRAWN: CB/LL/SH/BD **CHECKED:** CB/ND
SCALE: 1:200 @ A1 **DATE:** 08/06/2007

PROJECT NUMBER / SERIES / DRAWING NUMBER: 1603•102 **REV:** DA2



BUILDING A

Cafe	90m ²
Sub Newsagent	120m ²
Management+Administration	270m ²
Staff Amenity	120m ²
Storage	105m ²
Total Community Facilities	210m²
Total Management/Back of house	495m²

BUILDING B

Restaurant	150m ²
Post Office	65m ²
Restaurant Kitchen	90m ²
Community Service Kitchen / Cold Store	115m ²
Convenience Store	90m ²
Sports Bar	170m ²
Total Community Facilities	565m²
Total Management/Back of house	115m²

BUILDING C

Library/Meeting Rm + Reading Rm	200m ²
Gallery / Museum	335m ²
Garbage Room	25m ²
Professional Suites	250m ²
Total Community Facilities	785m²
Total Management/Back of house	25m²

Total Community Facilities	1560m²
Total Management/Back of house	635m²