

NOTE : SYMBOLS ARE DRAWN IN THE CORRECT POSITION BUT ARE NOT SHOWN TO SCALE

Issue	Date	Amendment	Int.	App.
1	19.10.06	TENDER REVIEW ISSUE	AM	DC
2	23.10.06	TENDER REVIEW ISSUE	AM	DC



Client:

**Clifton Coney Group**  
 CLIFTON CONEY GROUP PTY LTD  
 Level 18, Clifton Centre  
 SYDNEY NSW 2000  
 T 02 9287 2100  
 F 02 9287 2188

Architect:

**TURNER + ASSOCIATES**  
 LEVEL 1/ 586 CROWN STREET  
 SURRY HILLS NSW 2010  
 T 02 9690 2855  
 F 02 9690 2411

NOMINATED ARCHITECT: Nicholas Turner 6695  
 DLQ QUALITY ENDORSED COMPANY ISO 9001:2000  
 LICENCE NUMBER 4168

Hydraulic Consultant:

**STEVE PAUL & PARTNERS**  
 SPP  
 Level 3 - 432 Kent St.  
 SYDNEY NSW 2000  
 Ph (02) 9261 1300  
 Fax (02) 9261 1600

A.C.N.: 088 131 793 A.B.N.: 78 088 131 793  
 EMAIL: mail@sydspap.com.au  
 WEBSITE: http://www.stevepaulpartners.com

Project:

**EMIRATES LUXURY RESORT  
 WOLGAN VALLEY**

Drawing Title:

**HYDRAULIC SERVICES  
 STAFF ACCOMMODATION  
 BUILDING PLANS**

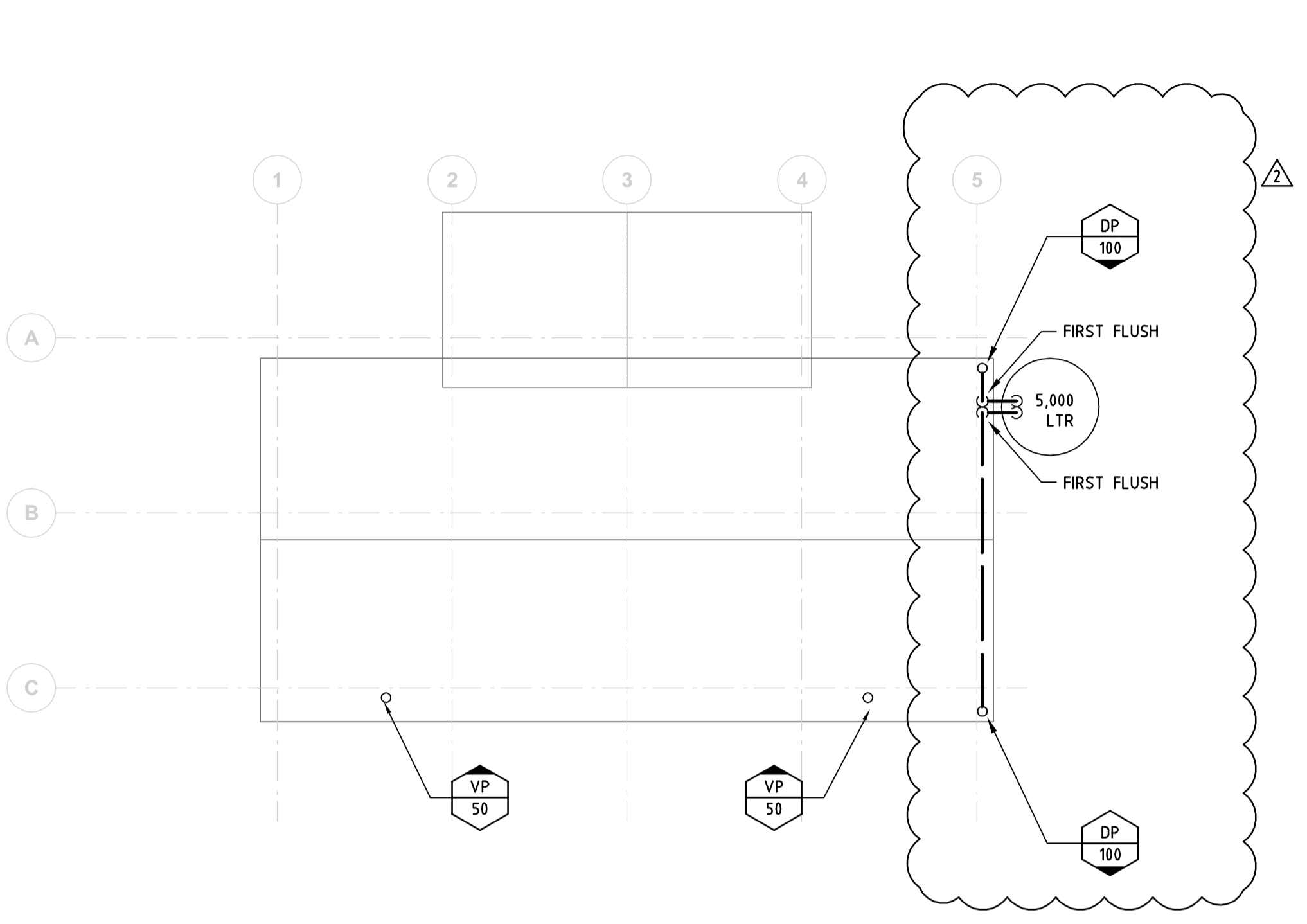
**DRAINAGE SERVICES**

North Point:

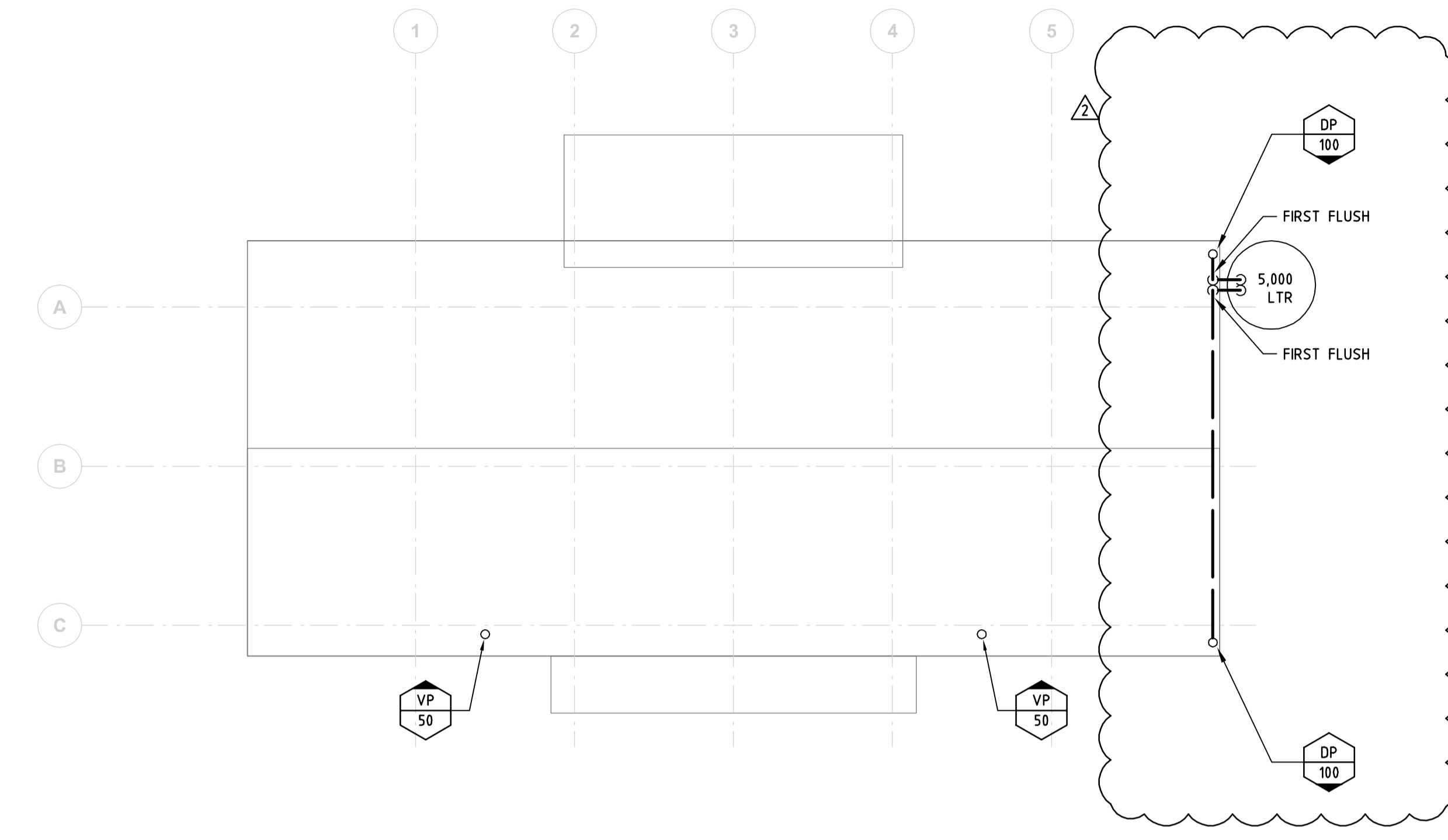
Design: MATTHEW ADAM  
 Design Validated: DARREN CAMPBELL  
 Amendment Approved:  
 Drawn: RYAN PETKOVICH

Date: AUGUST 2006 Scale: (A1) 1:100 (A3)  
 Job No: Disc: Dwg No: Stage: Issue:  
**S05066 - H - 115 - TR - 2**

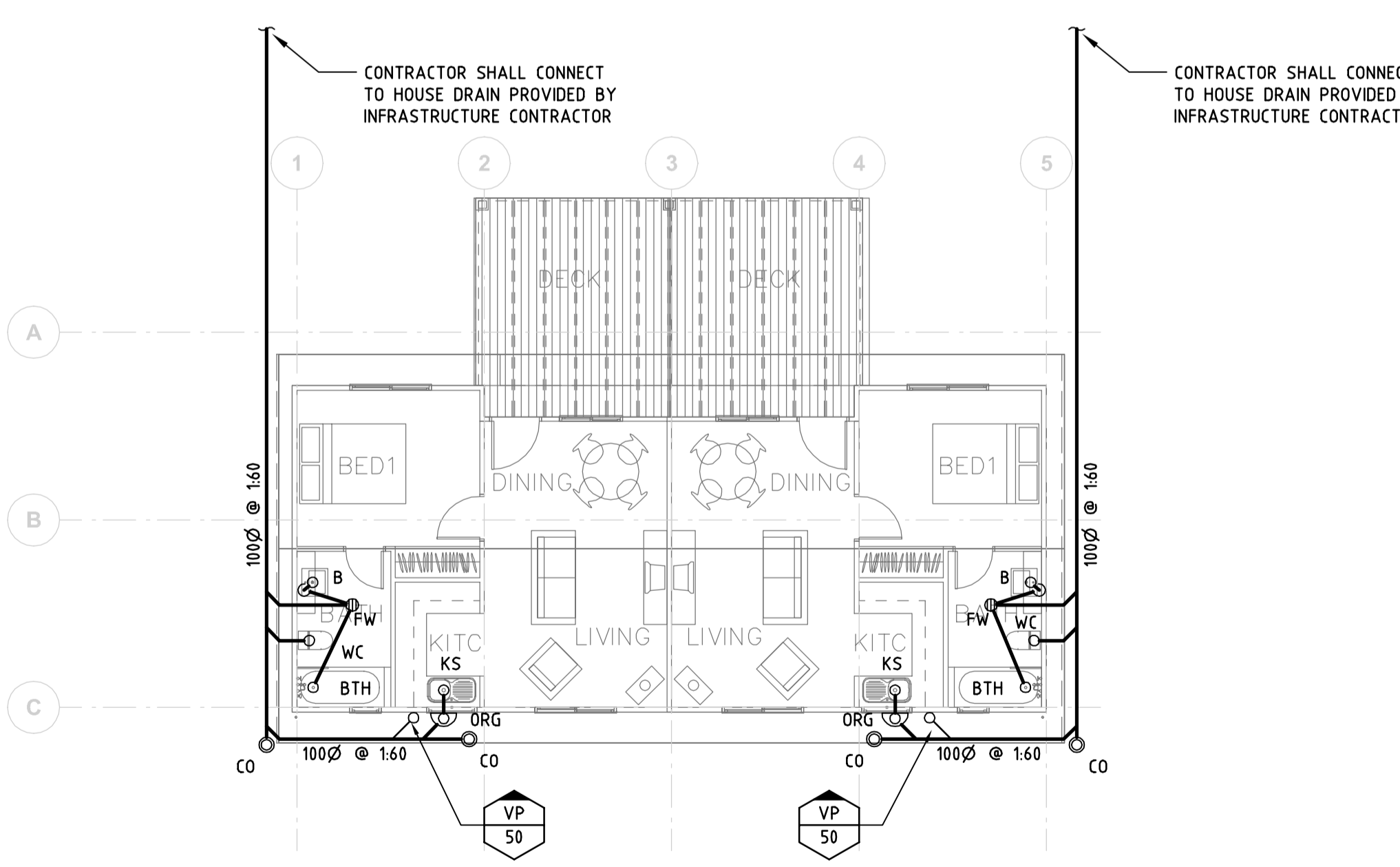
PLOT DATE & TIME: 23 OCT 2006 - 12:41pm  
 PLOTTED BY: me



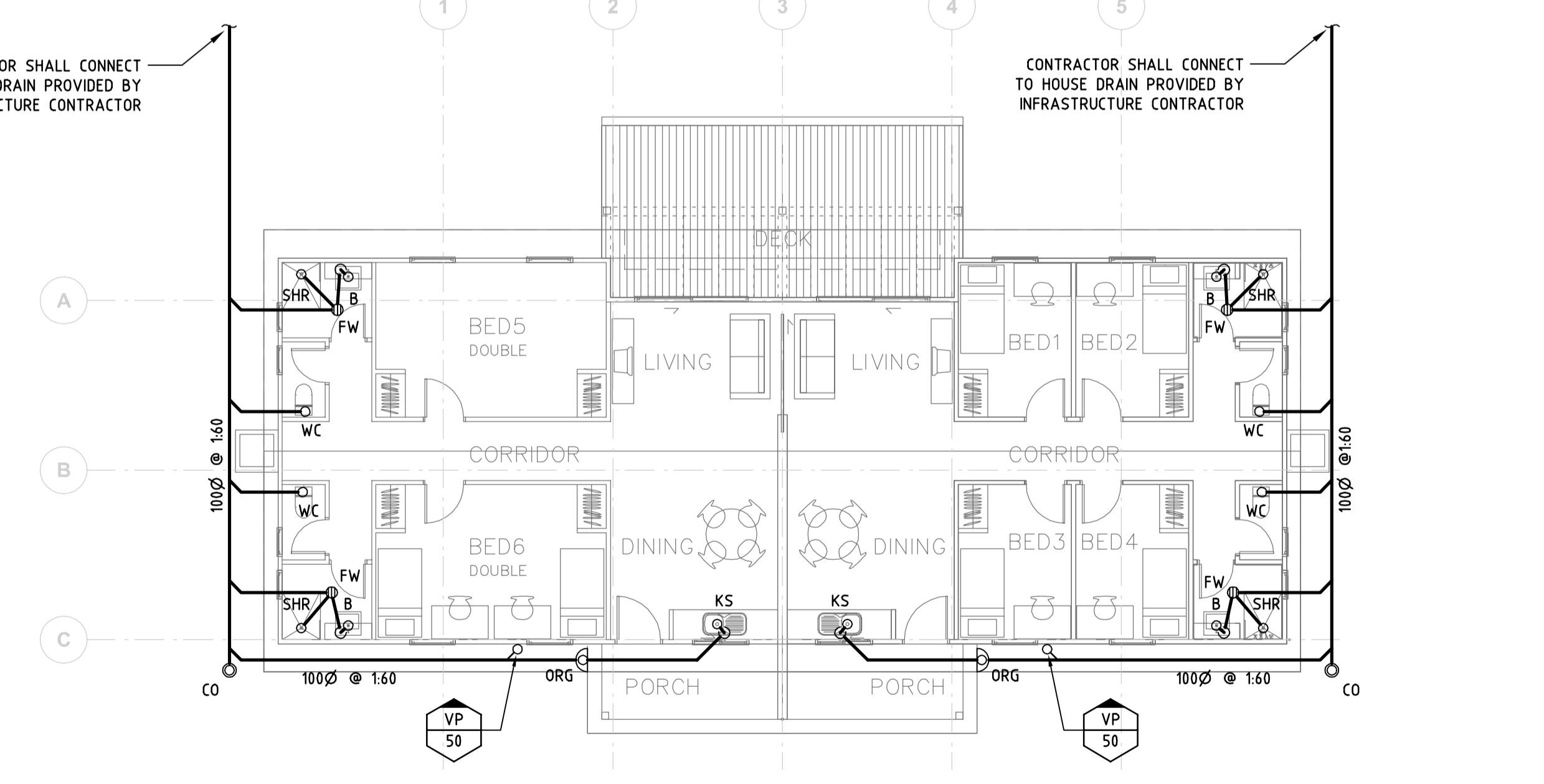
ROOF DRAINAGE LAYOUT - BUILDING 1



ROOF DRAINAGE LAYOUT - BUILDING 2



DRAINAGE LAYOUT - BUILDING 1



DRAINAGE LAYOUT - BUILDING 2