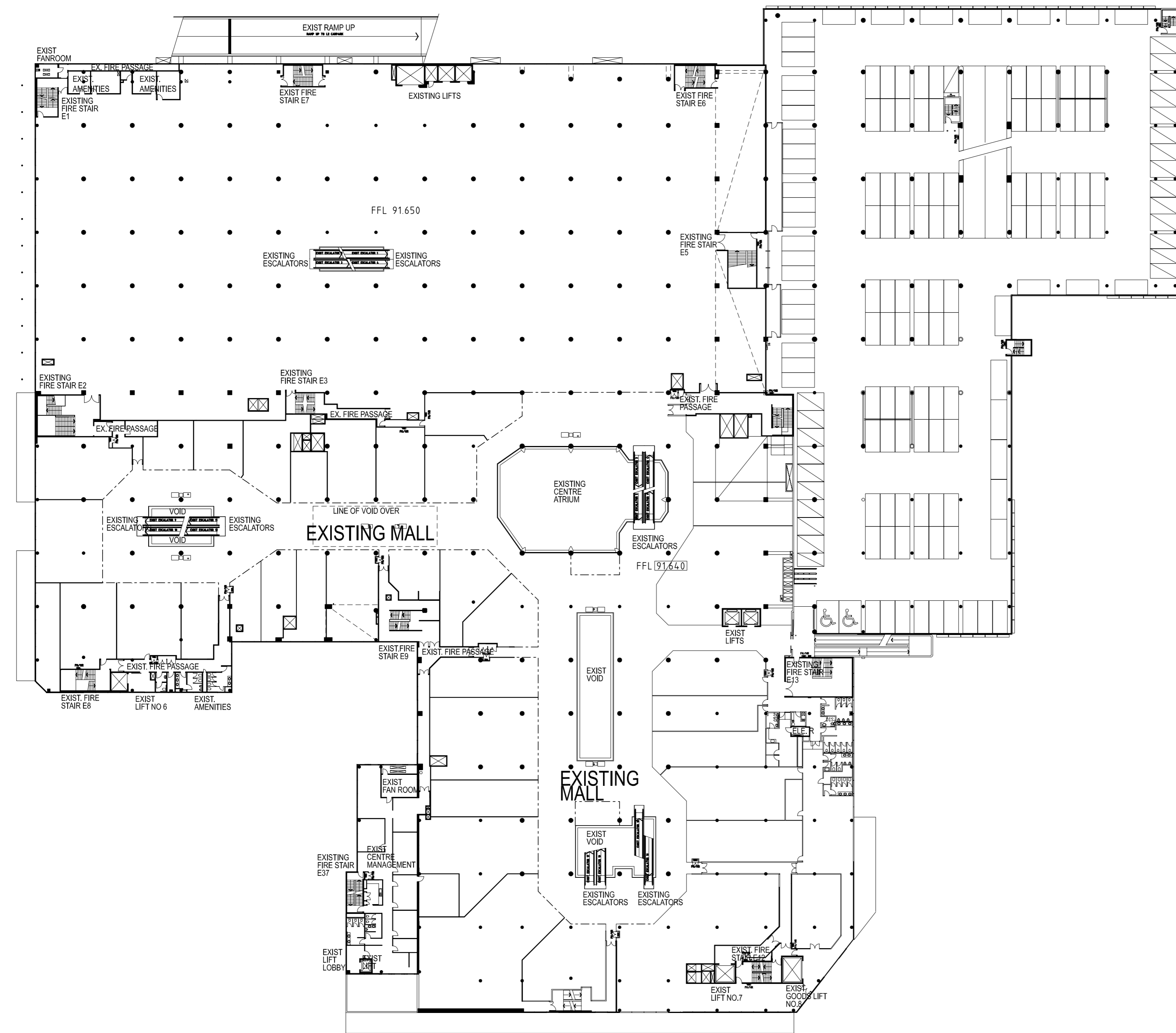
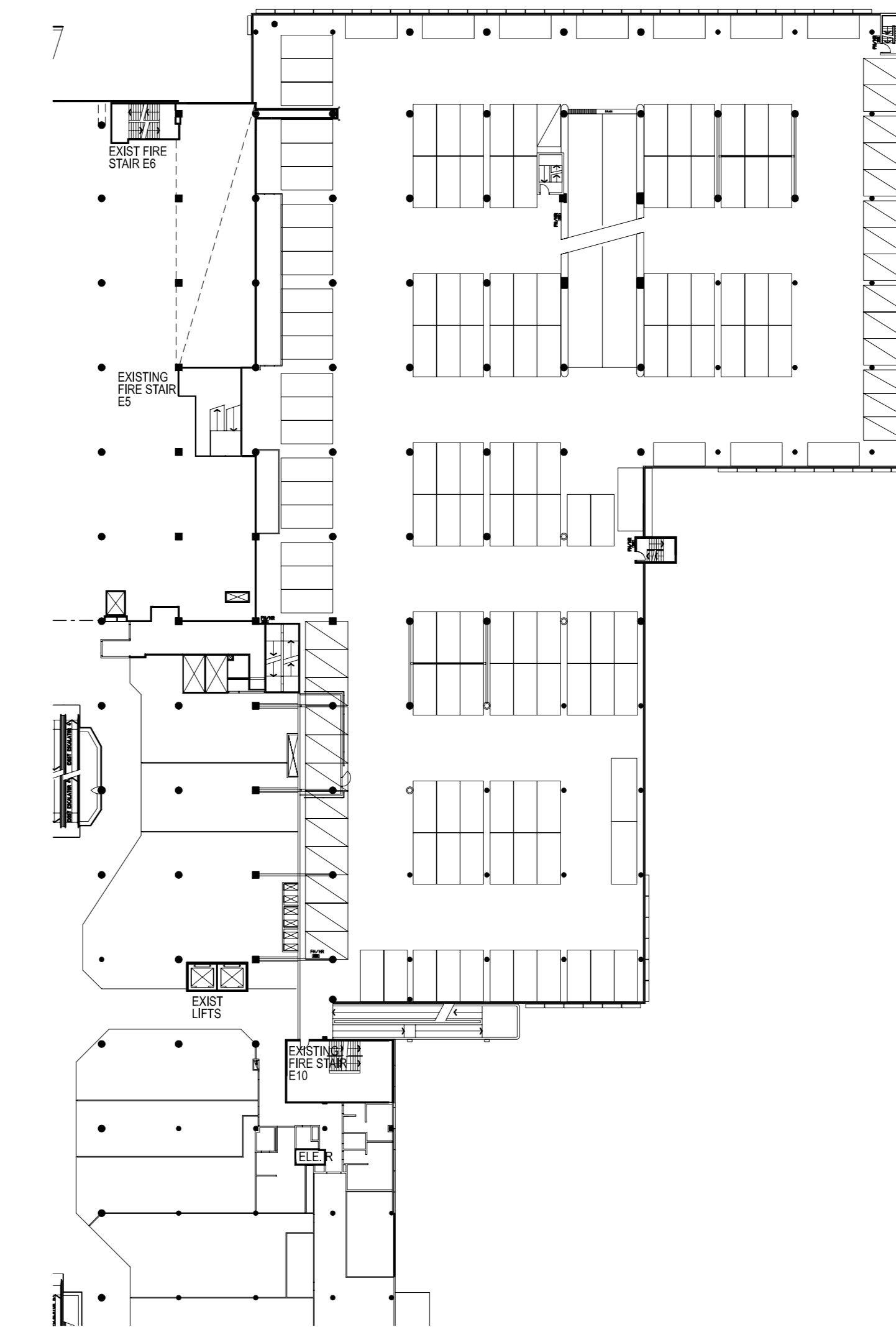


No.	Description	By	Date
01	ISSUED FOR INFORMATION	BS	23.10.06
02	ISSUED FOR INFORMATION	JJ	21.03.07
03	ISSUED TO JBA	JJ	21.05.07
04	FINAL DESIGN DEVELOPMENT ISSUE	JJ	01.06.07
05	REVISED CARPARKING TP ISSUE	JJ	25.06.07
06	ISSUED TO COFFEY	JJ	31.08.07
07	ISSUED FOR RESUBMISSION	JJ	03.09.07



EXISTING LEVEL 1 PLAN



EXISTING LEVEL 1A PLAN

ENCLOSED DRAWING IS PROVIDED BY COLONIAL FIRST STATE PROPERTY. THE DRAWING IS ISSUED FOR INFORMATION ONLY. ALL CONDITIONS AND DIMENSION TO BE CHECKD AND VERIFIEDON SITE.

Chatswood Chase Beautiful on Every Level



**THE BUCHAN GROUP**  
MELBOURNE

**Buchan Lohr & Rowden (Vic) Pty Ltd**  
A.C.N. 007 272 826  
Architects, Planners & Interior Designers  
123 Roslyn Street West Melbourne  
Victoria 3003, AUSTRALIA  
Tel: +613 9329 1077 Fax: +613 9329 0461  
Email: btl@melbourne.buchan.com.au  
© THE BUCHAN GROUP 2007

Project  
**CHATSWOOD CHASE REDEVELOPMENT**

Drawing Title  
**EXISTING LEVEL 1 & LEVEL 1A PLAN**

This drawing has not been checked or approved, unless signed.

Checked by: **BS**  
Date: **23 OCT 2006**  
Scale: **1:500 @ A0**

Project Number: **305059** Drawing Number: **AEX 203** Revision: **07**