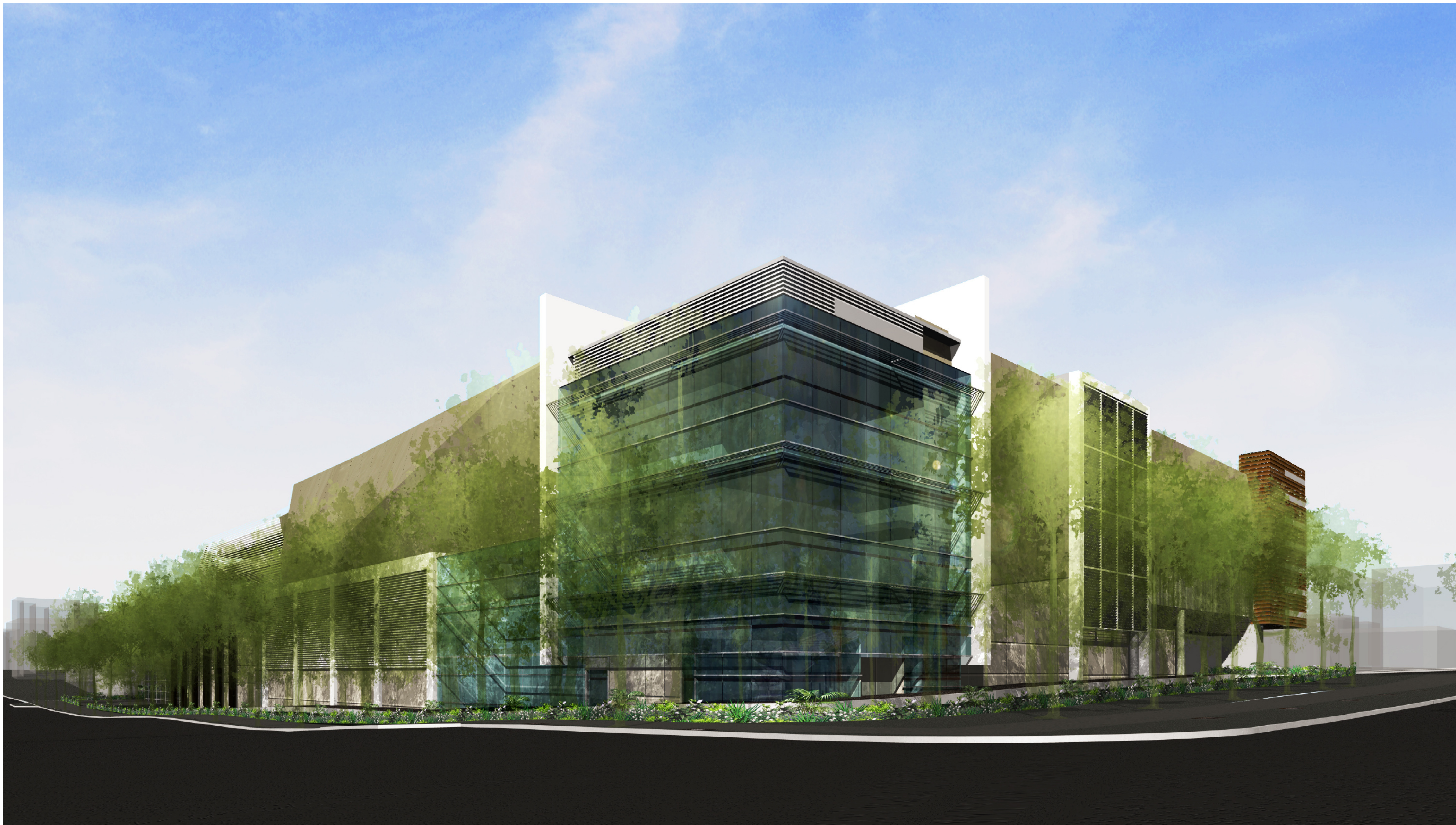



Revisions			
No.	Description	By	Date
00	DA SUBMISSION	JJ	11.04.07
01	DA INTERIM SUBMISSION	JJ	29.04.07
02	ISSUED TO JBA	JJ	21.05.07
03	ISSUED FOR RESUBMISSION	JJ	03.09.07



EXISTING STREETScape - CORNER HAVILAH ST & MALVERN AVE



PROPOSED STREETScape - CORNER HAVILAH ST & MALVERN AVE


Chatswood Chase *Beautiful on Every Level*


Colonial First State
 Property Management

THE BUCHAN GROUP
 MELBOURNE

Buchan Lohd & Bowden (Vic) Pty Ltd
 A.C.N. 007 272 826
 Architects, Planners & Interior Designers
 123 Rosslyn Street West Melbourne
 Victoria 3003, AUSTRALIA
 Tel: +613 9329 1077 Fax: +613 9329 0461
 Email: btl@melbourne.buchan.com.au
 © THE BUCHAN GROUP 2007

Project
CHATSWOOD CHASE REDEVELOPMENT

Drawing Title
VIEW - HAVILAH ST & MALVERN AV (WITH TREES)

This drawing has not been checked or approved, unless signed.

Checked by:
 Approved by:
 Drawn by: **RW1**
 Date: **23-03-07**
 Scale: **NTS**

Project Number: **305059** Drawing Number: **ATP 610** Revision: **03**