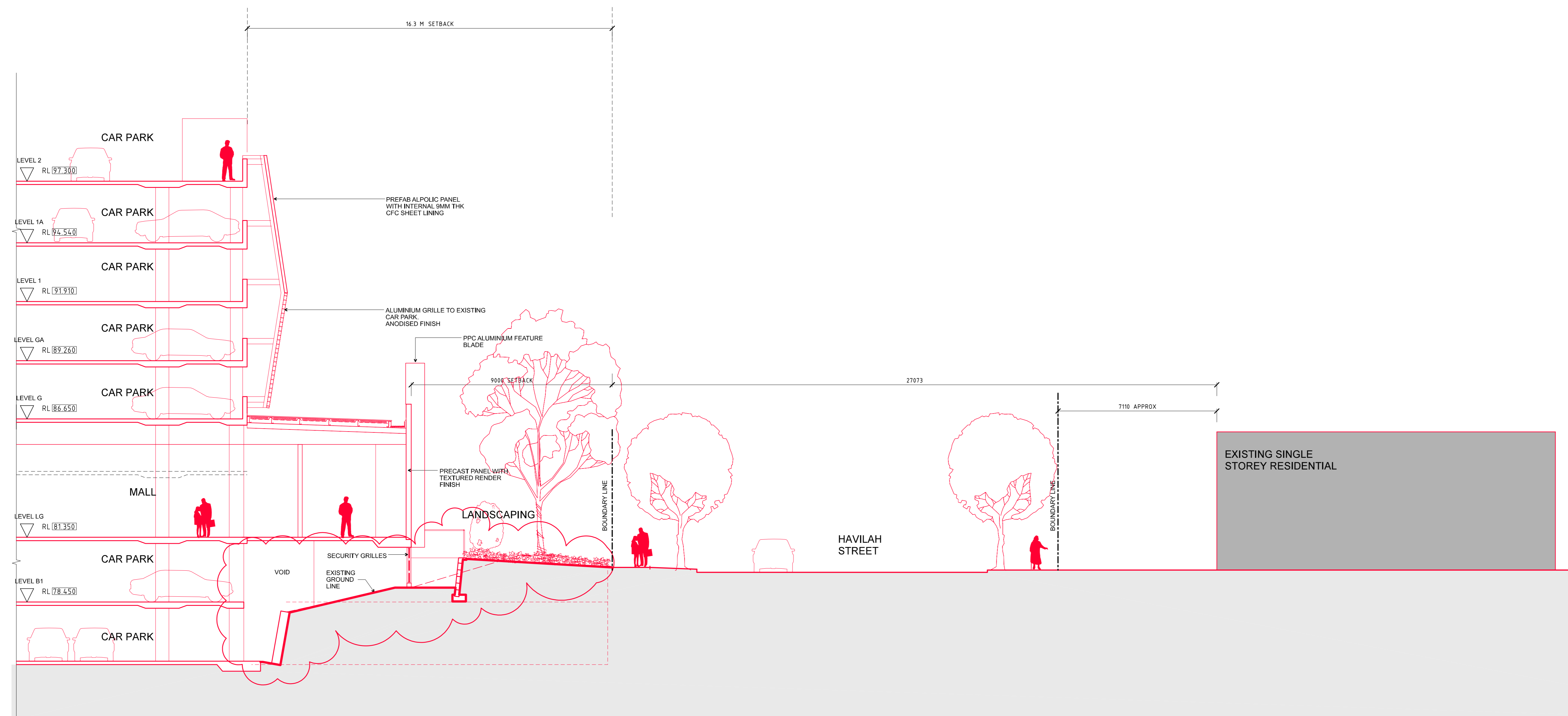
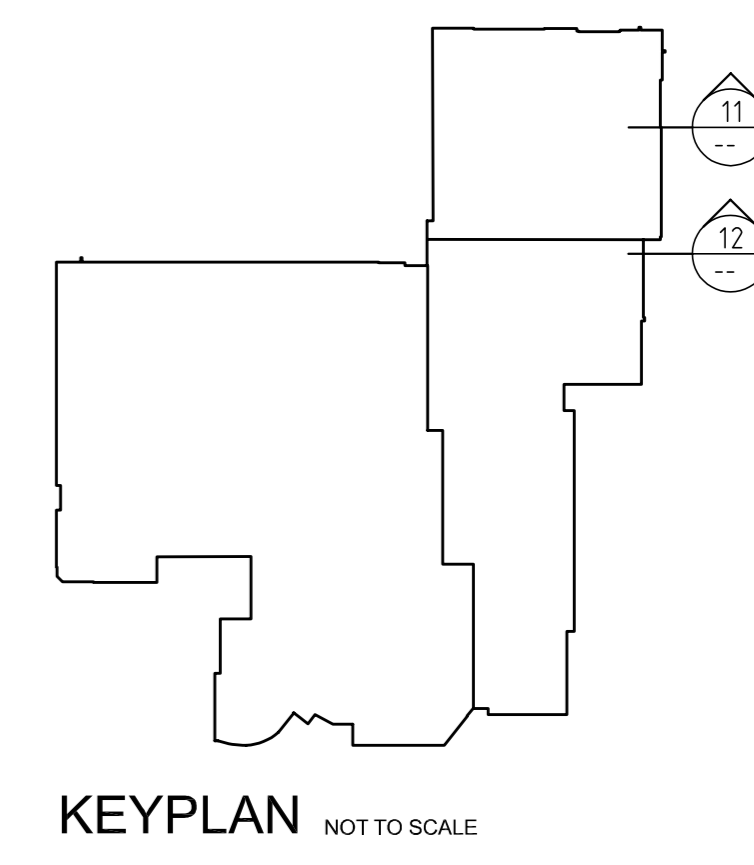


11 SECTION-COLES / PLANT  
SCALE 1:100  
HAVILAH STREET



12 SECTION- EXTENDED LOWER GROUND RETAIL+SCREEN  
SCALE 1:100  
HAVILAH STREET



Revisions			
No.	Description	By	Date
00	DA SUBMISSION	JJ	11.04.07
01	DA INTERIM SUBMISSION	JJ	29.04.07
02	ISSUED TO JBA	JJ	21.05.07
03	ISSUED FOR RESUBMISSION	JJ	03.09.07
04	ISSUED FOR RESUBMISSION CLOUDS REMOVED	JJ	06.09.07
05	AMENDED FOR REVISED APPLICATION CLARIFICATION	JJ	28.09.07

**Chatswood Chase** *Beautiful on Every Level*

**Colonial First State**  
 Property Management

**THE BUCHAN GROUP**  
 MELBOURNE  
 Buchanan Laid & Bowden (Vic) Pty Ltd  
 A.C.N. 007 272 826  
 Architects Planners & Interior Designers  
 123 Rosslyn Street West Melbourne  
 Victoria 3003, AUSTRALIA  
 Tel: +613 9329 1077 Fax: +613 9329 0461  
 Email: bsg@melbourne.buchan.com.au  
 © THE BUCHAN GROUP 2007

Project  
**CHATSWOOD CHASE REDEVELOPMENT**

Drawing Title  
**SECTIONS - HAVILAH STREET**

This drawing has not been checked or approved unless signed.

Checked by:  
Approved by:  
Drawn by: **AS1**  
Date: **23-03-07**  
Scale: **1:100 @ A0**

Project Number	Drawing Number	Revision
305059	ATP 503	05