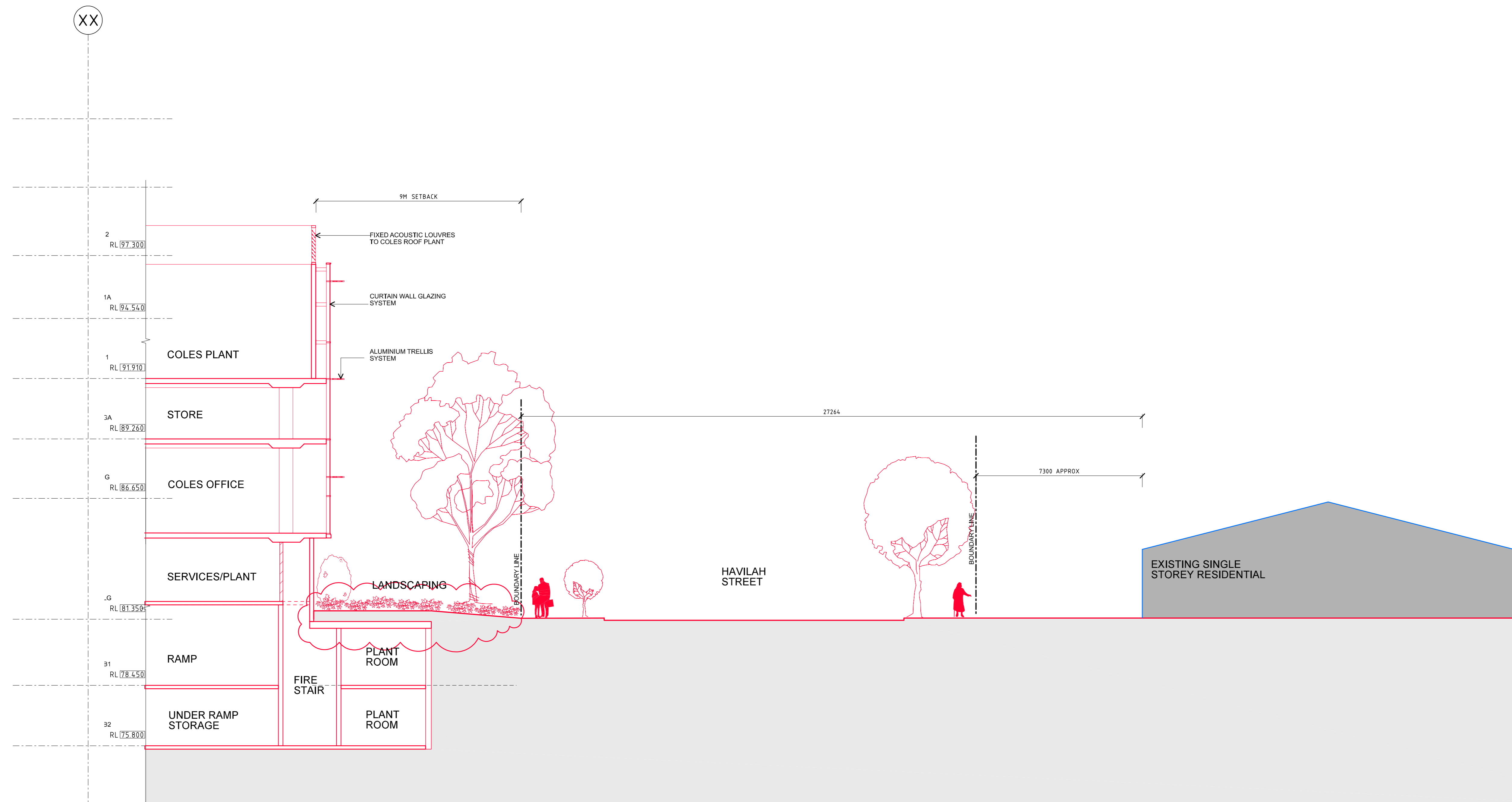
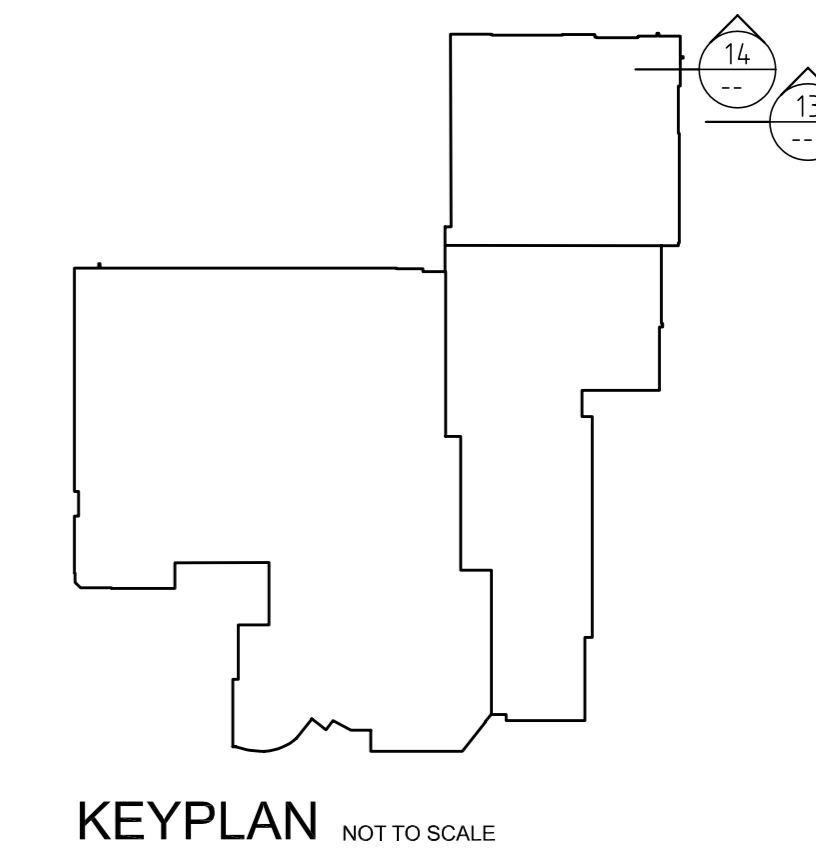


13 SECTION - COLES OFFICE
SCALE 1:100
HAVILAH STREET



14 SECTION - COLES OFFICE/PLANT
SCALE 1:100
HAVILAH STREET



Revisions			
No.	Description	By	Date
00	DA SUBMISSION	JJ	11.04.07
01	DA INTERIM SUBMISSION	JJ	29.04.07
02	ISSUED TO JBA	JJ	21.05.07
03	ISSUED FOR RESUBMISSION	JJ	03.09.07
04	ISSUED FOR RESUBMISSION CLOUDS REMOVED	JJ	06.09.07
05	AMENDED FOR REVISED APPLICATION CLARIFICATION	JJ	28.09.07

Chatswood Chase *Beautiful on Every Level*

Colonial First State
 Property Management

THE BUCHAN GROUP
 MELBOURNE
 Buchanan Laid & Bowden (Vic) Pty Ltd
 A.C.N. 007 272 826
 Architects, Planners & Interior Designers
 123 Rosslyn Street West Melbourne
 Victoria 3003, AUSTRALIA
 Tel: +613 9329 1077 Fax: +613 9329 0461
 Email: btl@melbourne.buchan.com.au
 © THE BUCHAN GROUP 2007

Project
CHATSWOOD CHASE REDEVELOPMENT

Drawing Title
SECTIONS - HAVILAH STREET

This drawing has not been checked or approved unless signed.

Checked by:
Approved by:
AS1
Date: 23-03-07
Scale: 1:100 @ A0

Project Number: 305059
Drawing Number: ATP 504
Revision: 05