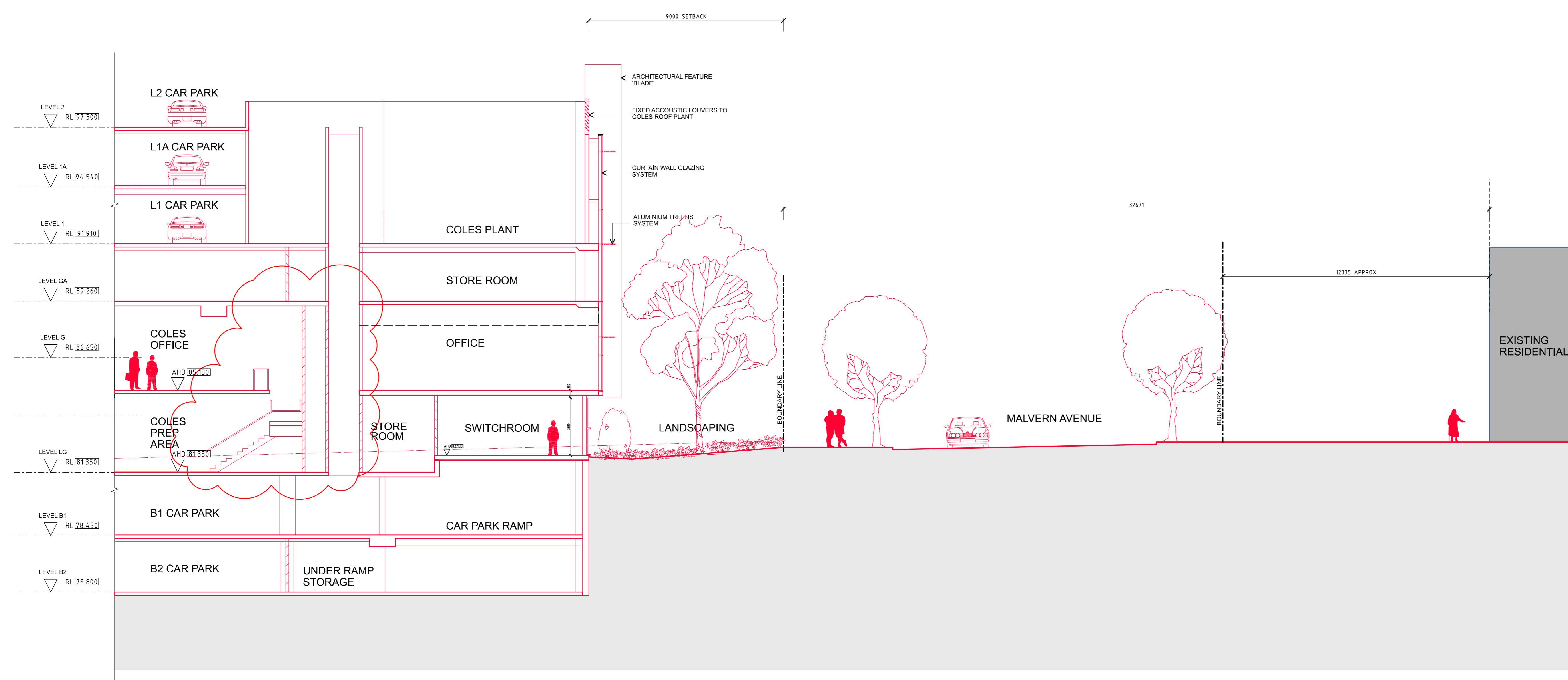
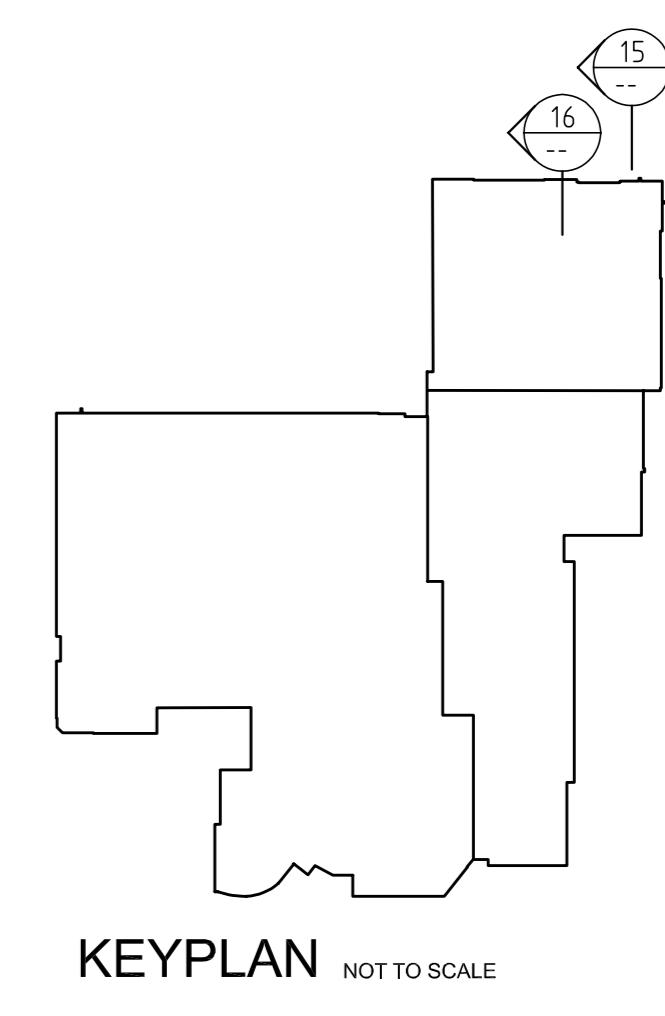
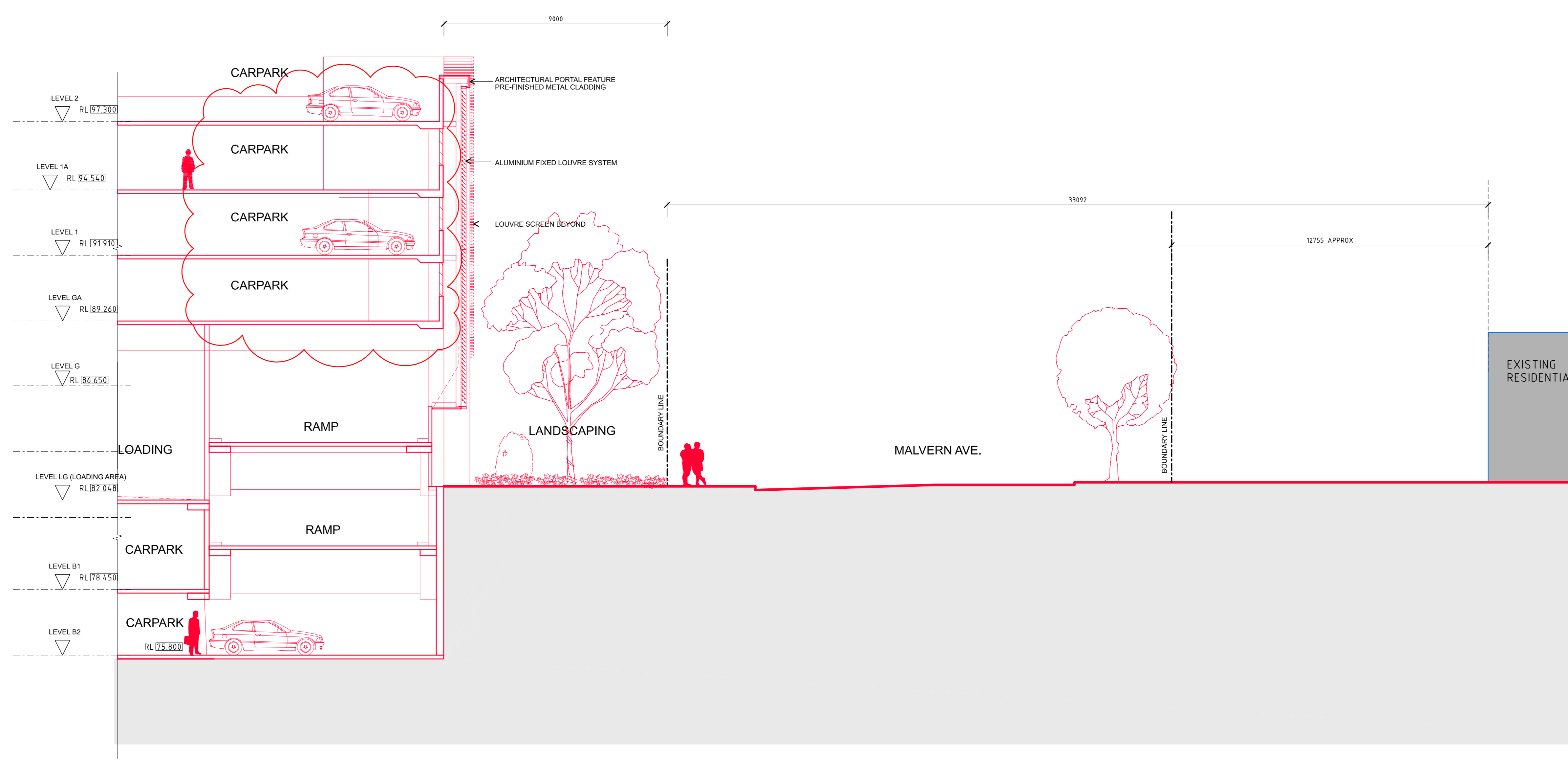


Revisions			
No.	Description	By	Date
00	DA SUBMISSION	JJ	11.04.07
01	DA INTERIM SUBMISSION	JJ	29.04.07
02	ISSUED TO JBA	JJ	21.05.07
03	ISSUED FOR RESUBMISSION	JJ	03.09.07
04	ISSUED FOR RESUBMISSION CLOUDS REMOVED	JJ	06.09.07
05	AMENDED FOR REVISED APPLICATION CLARIFICATION	JJ	28.09.07



15 SECTION- SWITCH ROOM / COLES PLANT
SCALE 1:100
MALVERN AVENUE



16 SECTION-CARPARK & RAMPS
SCALE 1:100
MALVERN AVENUE

Chatswood Chase Beautiful on Every Level



THE BUCHAN GROUP
MELBOURNE
Buchan Laid & Bowden (Vic) Pty Ltd
A.C.N. 007 272 826
Architects Planners & Interior Designers
123 Rosslyn Street West Melbourne
Victoria 3003, AUSTRALIA
Tel: +613 9329 1077 Fax: +613 9329 0461
Email: bty@melbourne.buchan.com.au
© THE BUCHAN GROUP 2007

Project
CHATSWOOD CHASE REDEVELOPMENT

Drawing Title
SECTIONS - MALVERN AVENUE

This drawing has not been checked or approved unless signed. Checked by: Approved by:

Drawn by: **AS1**
Date: **23-03-07**
Scale: **1:100 @ A0**

Project Number	Drawing Number	Revision
305059	ATP 505	05