

**Drawing no.** 07002g\_CP\_07-3

**Date** 14 November 2008

**Source** Geoscience Australia  
NSW Department of Lands  
RLMS Pty Ltd

**Datum** GDA 94

### Legend

- |                          |                            |                                 |
|--------------------------|----------------------------|---------------------------------|
| ○ Kilometre point        | ■ Built up area            | — Principal road                |
| ■ Study Area             | ■ Travelling stock reserve | — Secondary road                |
| ✈ Airport/Landing ground |                            | — Minor road                    |
| ■ NSW estate             |                            | --- Minor road (unsealed)       |
| ■ Recreation area        |                            | --- Railway                     |
| ■ Water storage areas    |                            | — Major river (perennial)       |
|                          |                            | --- Minor river (non-perennial) |

 **Queensland Hunter Gas Pipeline**

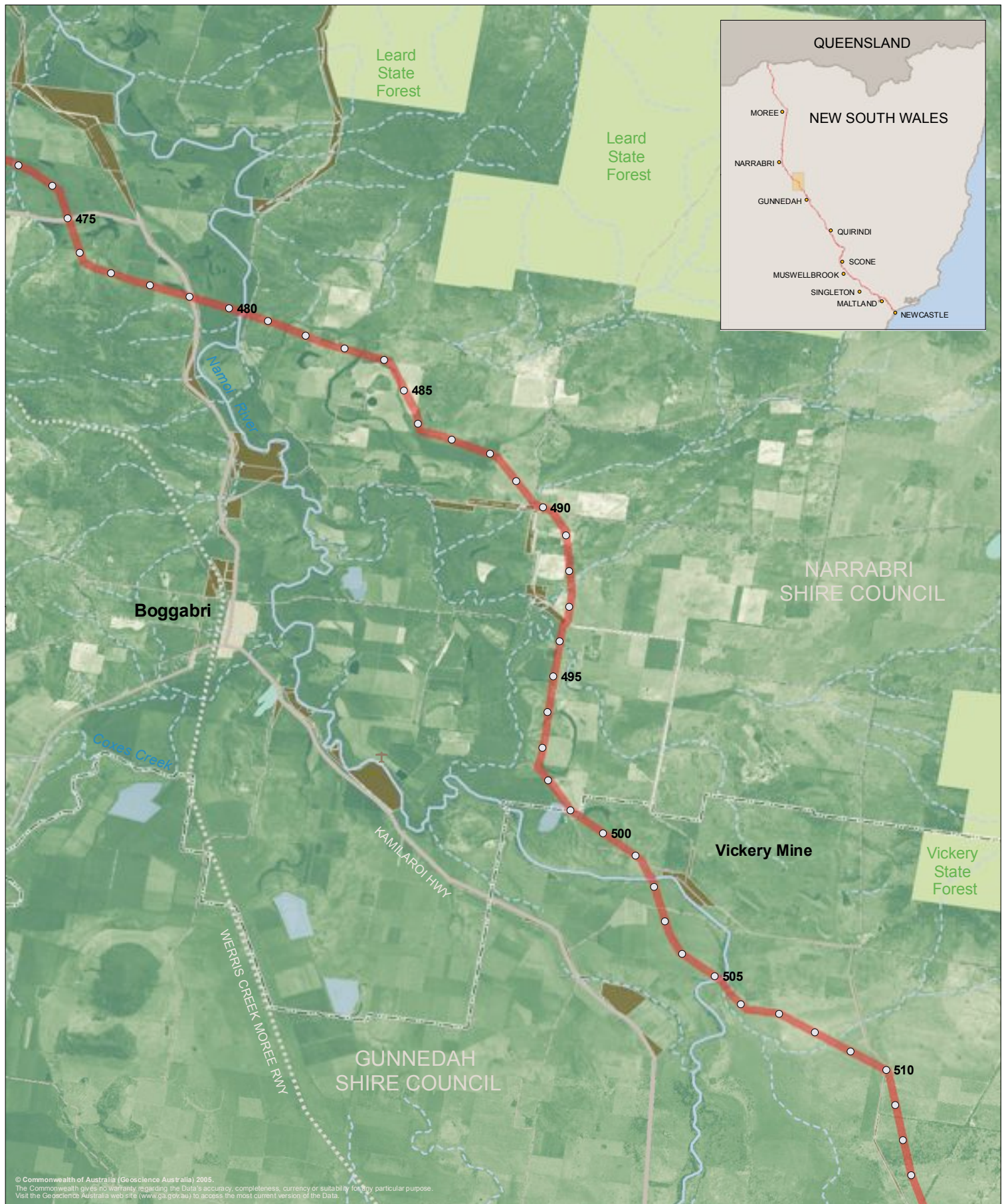
**Figure 5.7** 200m wide Study Area - Narrabri area (KP 435-475)

1:140,000 (at A4)

0 1 2 3 4km







**Drawing no.** 07002g\_CP\_08-3

**Date** 14 November 2008

**Source** Geoscience Australia  
NSW Department of Lands  
RLMS Pty Ltd

**Datum** GDA 94

**Figure 5.8** 200m wide Study Area - Boggabri area (KP 473-513)

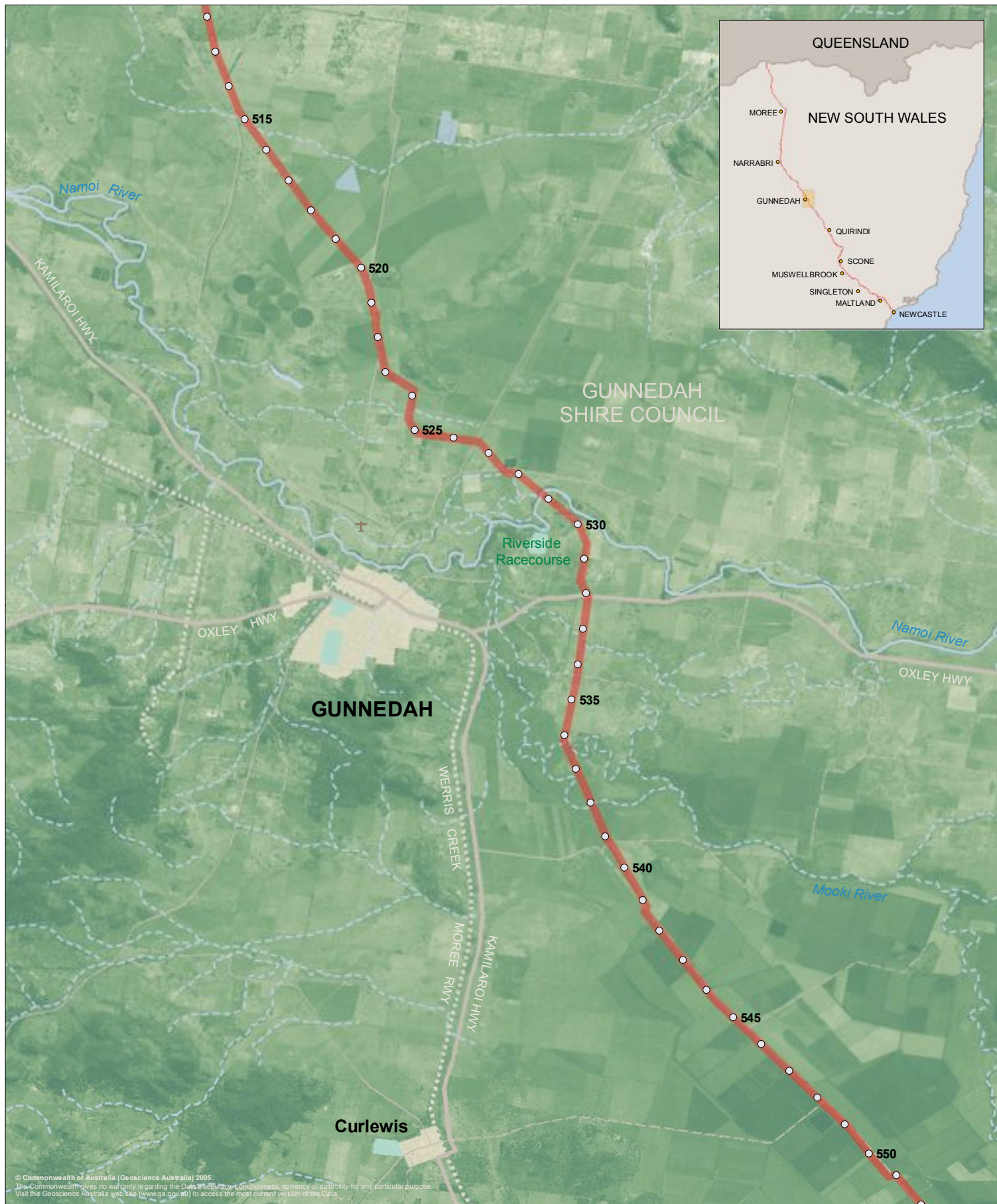
 **Queensland Hunter  
Gas Pipeline**

1:140,000 (at A4)

0 1 2 3 4km







**Drawing no.** 07002g\_CP\_09-3

**Date** 14 November 2008

**Source** Geoscience Australia  
NSW Department of Lands  
RLMS Pty Ltd

**Datum** GDA 94

#### Legend

- |                              |                             |
|------------------------------|-----------------------------|
| ○ Kilometre point            | Principal road              |
| ■ Proposed pipeline corridor | Secondary road              |
| ✈ Airport/Landing ground     | Minor road                  |
| ■ Recreation area            | Minor road (unsealed)       |
| ■ Water storage area         | --- Railway                 |
| ■ Built up area              | Major river (perennial)     |
| ■ Travelling stock reserve   | Minor river (non-perennial) |

 **Queensland Hunter  
Gas Pipeline**

**88-888**

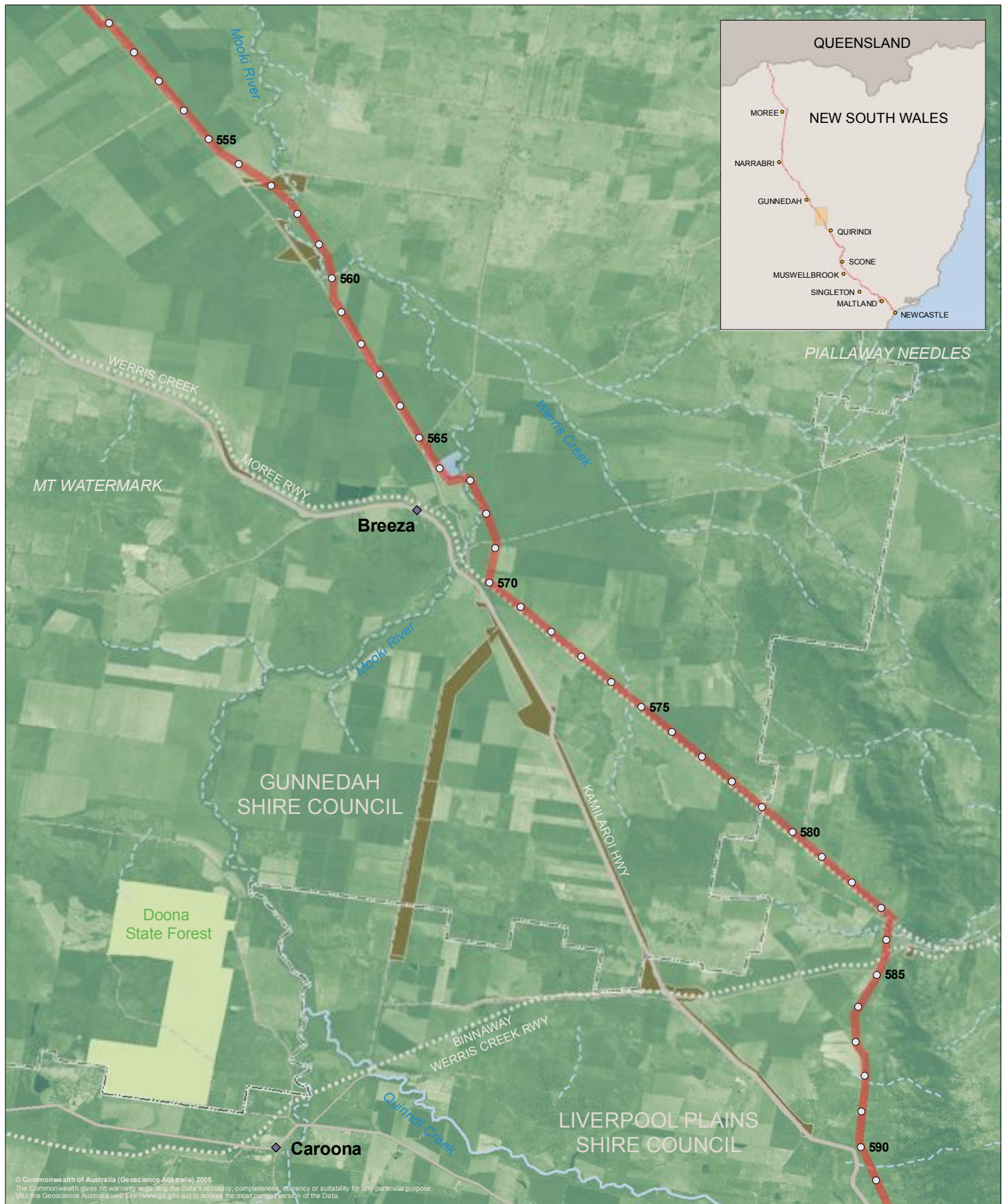
1:140,000 (at A4)

0 1 2 3 4km



**Figure 5.9** 200m wide Study Area: Gunnedah area (KP 513-552)





Drawing no. 07002g\_CP\_10-3

Date 14 November 2008

Source Geoscience Australia  
NSW Department of Lands  
RLMS Pty Ltd

Datum GDA 94

### Legend

- |   |                          |     |                             |
|---|--------------------------|-----|-----------------------------|
| ○ | Kilometre point          | —   | Principal road              |
| ■ | Study Area               | —   | Secondary road              |
| ■ | NSW estate               | —   | Minor road                  |
| ■ | Water storage area       | - - | Minor road (unsealed)       |
| ■ | Travelling stock reserve | —+— | Railway                     |
| □ | LGA boundary             | —   | Major river (perennial)     |
|   |                          | —   | Minor river (non-perennial) |

 **Queensland Hunter Gas Pipeline**

**Figure 5.10** 200m wide Study Area - Breeza area (KP 551-591)

1:140,000 (at A4)

0 1 2 3 4km











**Drawing no.** 07002g\_CP\_12-3

**Date** 14 November 2008

**Source** Geoscience Australia  
NSW Department of Lands  
RLMS Pty Ltd

**Datum** GDA 94

#### Legend

- |                            |                               |
|----------------------------|-------------------------------|
| ○ QHGP_MainLine_RevL_KPs   | Principal road                |
| ■ Study Area               | Secondary road                |
| ✈ Airport/Landing ground   | Minor road                    |
| ■ NSW estate               | Minor road (unsealed)         |
| ■ Built up area            | ■ Railway                     |
| ■ Travelling stock reserve | — Major river (perennial)     |
| □ LGA boundary             | — Minor river (non-perennial) |

 **Queensland Hunter Gas Pipeline**

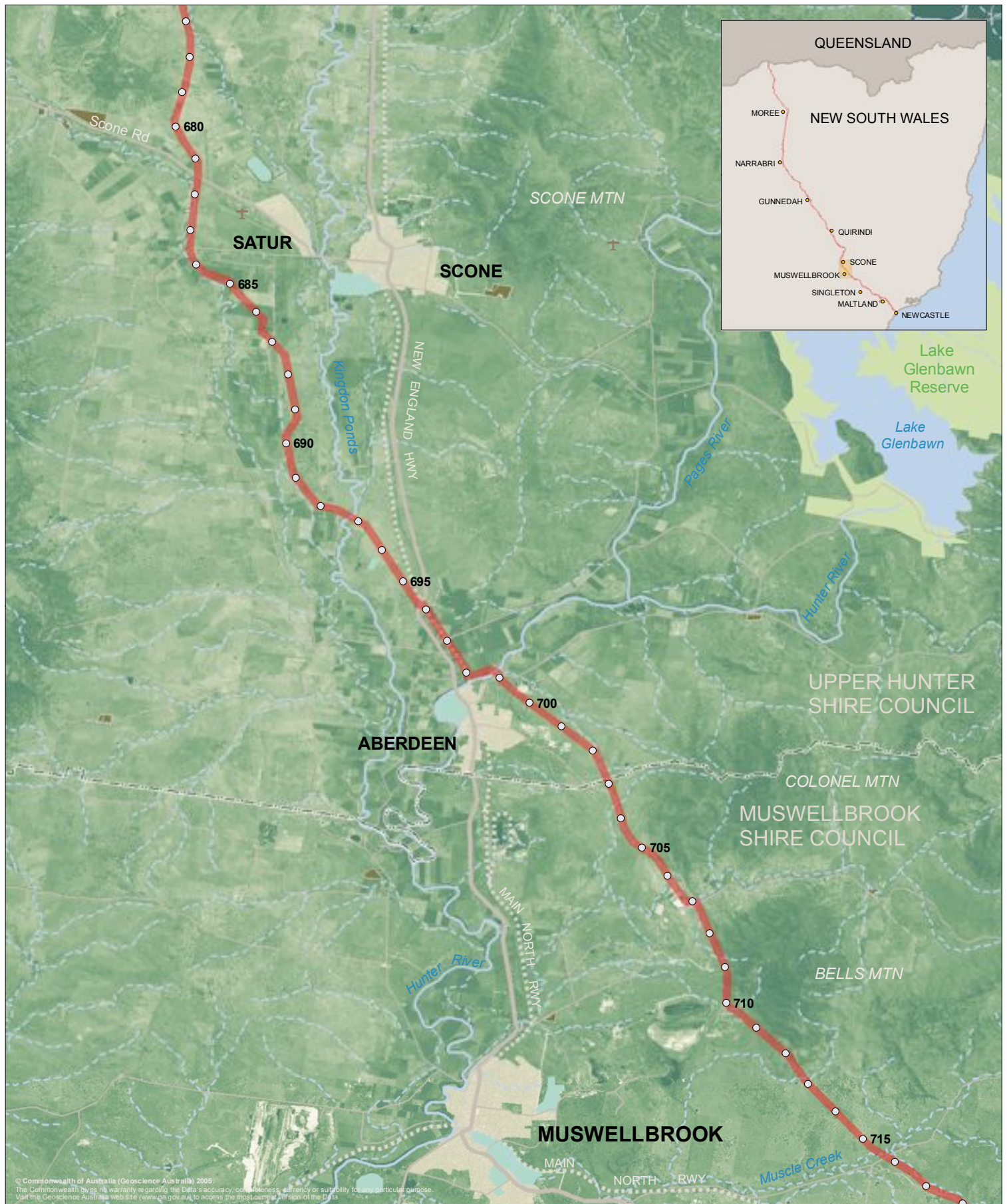
**Figure 5.12** 200m wide Study Area - Murrurundi area (KP 633-678)

1:140,000 (at A4)

0 1 2 3 4km







**Drawing no.** 07002g\_CP\_13-3

**Date** 14 November 2008

**Source** Geoscience Australia  
NSW Department of Lands  
RLMS Pty Ltd

**Datum** GDA 94

### Legend

- |                          |                            |                               |
|--------------------------|----------------------------|-------------------------------|
| ○ Kilometre point        | ■ Travelling stock reserve | — Principal road              |
| ■ Study Area             | □ LGA boundary             | — Secondary road              |
| ✈ Airport/Landing ground |                            | — Minor road                  |
| ■ NSW estate             |                            | — Minor road (unsealed)       |
| ■ Recreation area        |                            | — Railway                     |
| ■ Water storage area     |                            | — Major river (perennial)     |
| ■ Built up area          |                            | — Minor river (non-perennial) |

 **Queensland Hunter  
Gas Pipeline**

**Figure 5.13** 200m wide Study Area: Muswellbrook area (KP 677-718)

1:140,000 (at A4)

0 1 2 3 4km







**Drawing no.** 07002g\_CP\_14-3

**Date** 14 November 2008

**Source** Geoscience Australia  
NSW Department of Lands  
RLMS Pty Ltd

**Datum** GDA 94

**Figure 5.14** 200m wide Study Area - Singleton north area (KP 714-750)





**Drawing no.** 07002g\_CP\_15-3

**Date** 14 November 2008

**Source** Geoscience Australia  
NSW Department of Lands  
RLMS Pty Ltd

**Datum** GDA 94

#### Legend

- |                            |                                 |
|----------------------------|---------------------------------|
| ○ Kilometre point          | — Principal road                |
| ■ Study Area               | — Secondary road                |
| ✈ Airport/Landing ground   | — Minor road                    |
| ■ Recreation area          | - - Minor road (unsealed)       |
| ■ Built up area            | — Major river (perennial)       |
| ■ Travelling stock reserve | - - Minor river (non-perennial) |
| ■ LGA boundary             | ■ Railway                       |

 **Queensland Hunter Gas Pipeline**

**Figure 5.15** 200m wide Study Area - Singleton east area (KP 742-777)

1:140,000 (at A4)

0 1 2 3 4km







**Drawing no.** 07002g\_CP\_15-3

**Date** 14 November 2008

**Source** Geoscience Australia  
NSW Department of Lands  
RLMS Pty Ltd

**Datum** GDA 94

#### Legend

- |                            |                                 |
|----------------------------|---------------------------------|
| ○ Kilometre point          | — Principal road                |
| ■ Study Area               | — Secondary road                |
| ✈ Airport/Landing ground   | — Minor road                    |
| ■ Recreation area          | - - Minor road (unsealed)       |
| ■ Built up area            | — Major river (perennial)       |
| ■ Travelling stock reserve | - - Minor river (non-perennial) |
| ■ LGA boundary             | ■ Railway                       |

 **Queensland Hunter  
Gas Pipeline**

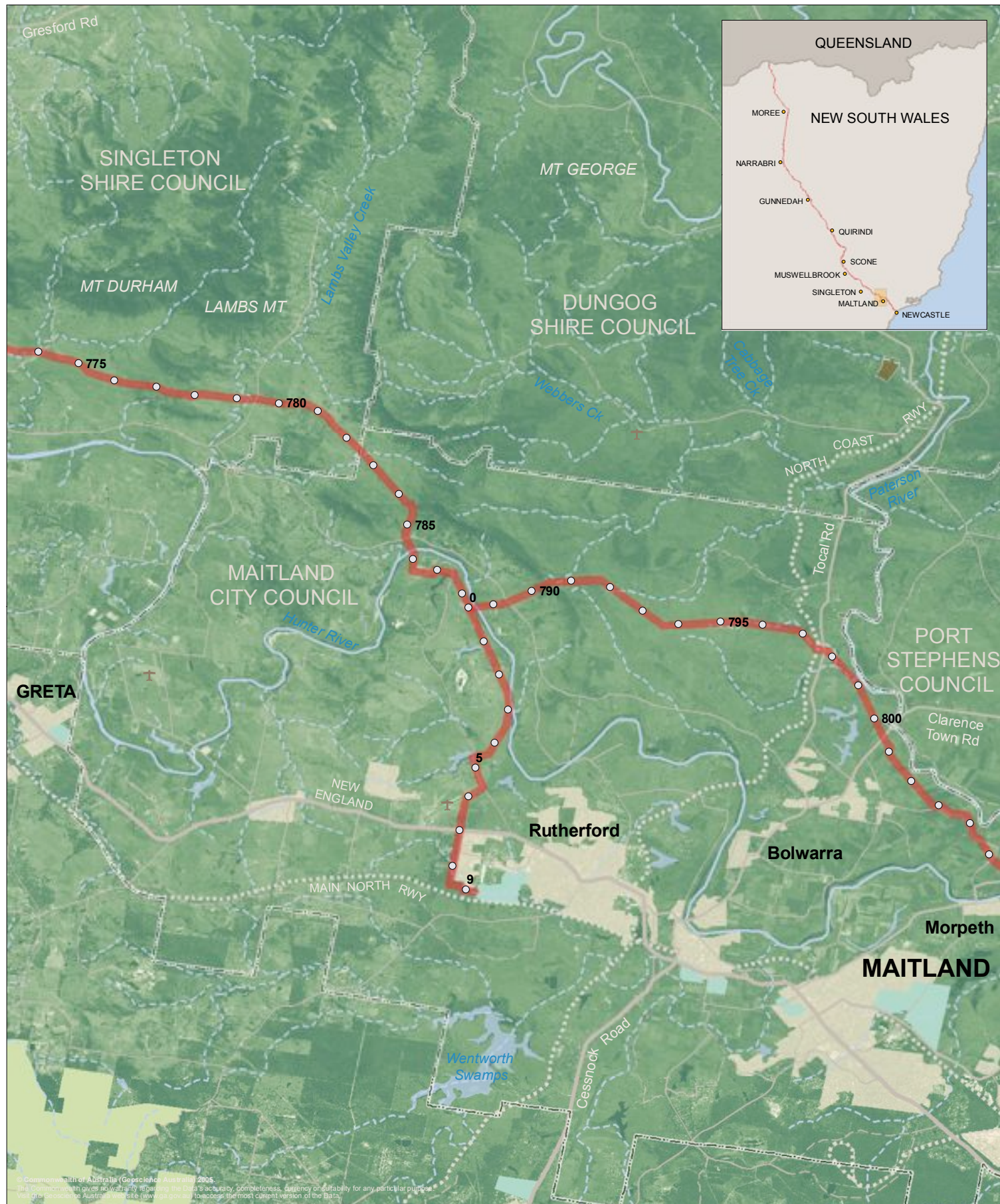
**Figure 5.15** 200m wide Study Area - Singleton east area (KP 742-770)

1:140,000 (at A4)

0 1 2 3 4km







**Drawing no.** 07002g\_CP\_16-3

**Date** 14 November 2008

**Source** Geoscience Australia  
NSW Department of Lands  
RLMS Pty Ltd

**Datum** GDA 94

### Legend

- |                          |                            |                               |
|--------------------------|----------------------------|-------------------------------|
| ○ Kilometre point        | ■ Built up area            | — Principal road              |
| ■ Study Area             | ■ Travelling stock reserve | — Secondary road              |
| ✈ Airport/Landing ground | □ LGA boundary             | — Minor road                  |
| ■ NSW estate             |                            | — Minor road (unsealed)       |
| ■ Recreation area        |                            | — Railway                     |
| ■ Water storage area     |                            | — Major river (perennial)     |
|                          |                            | — Minor river (non-perennial) |

 **Queensland Hunter  
Gas Pipeline**

1:140,000 (at A4)

0 1 2 3 4km









