

BATESSMART™

Site 4B
Sydney Olympic Park
Section 75W

General Arrangement Plan - Level 01
A03.001

Scale 1:500@A3
Scale 1:250@A1

BS PROJECT NO. S10665
17th December 2010



Issued under the Environmental Planning and Assessment Act 1979

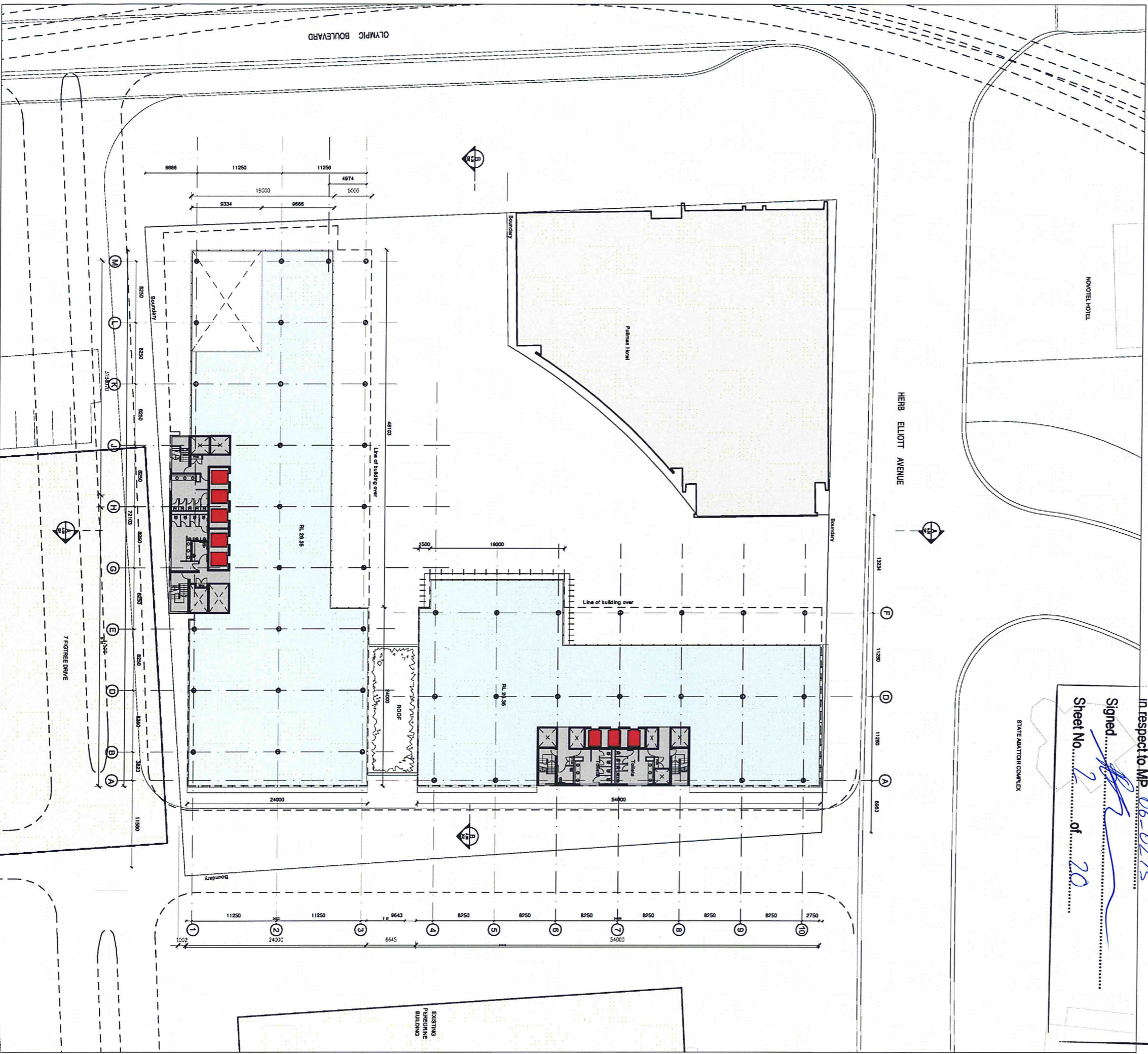
Approved Section 75W Modification Application

No. 1106-0273(4001), granted on the 12/08/2011

In respect to MP 06-0273

Signed

Sheet No. 2 of 20



BATESSMART™

Site 4B
Sydney Olympic Park
Section 75W

General Arrangement Plan - Level 02-03
A03.002

Scale 1:500@A3
Scale 1:250@A1
BS PROJECT NO. S10665
17th December 2010



NSW GOVERNMENT
Planning

Issued under the Environmental Planning and Assessment Act 1979

Approved Section 75W Modification Application

No. 1199-0274(A03) granted on the 12/08/2011

in respect to MP 06-0273

Signed

[Signature]

Sheet No. 3 of 20

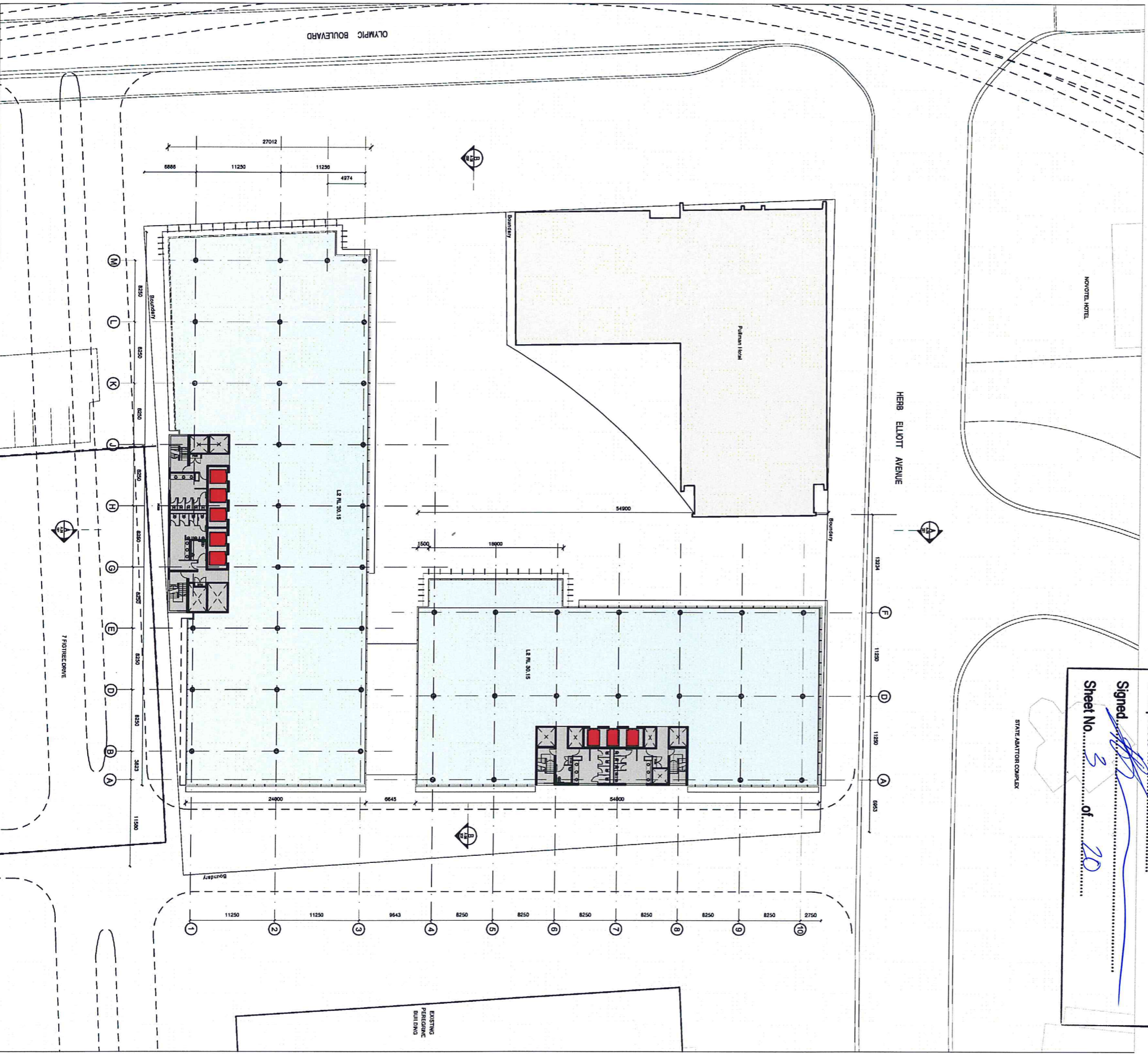
STATE ABATOR COMPLEX

NOVOTEL HOTEL

Pullman Hotel

HERB ELLIOTT AVENUE

OLYMPIC BOULEVARD



Scale 1:500@A3
 Scale 1:250@A1
 BS PROJECT NO. S10665
 17th December 2010



NSW GOVERNMENT
 Planning

Issued under the Environmental Planning and Assessment Act 1979

Approved Section 75W Modification Application

No. A1905-02-73 (para) granted on the 12/08/2011

in respect to MP 05-0275

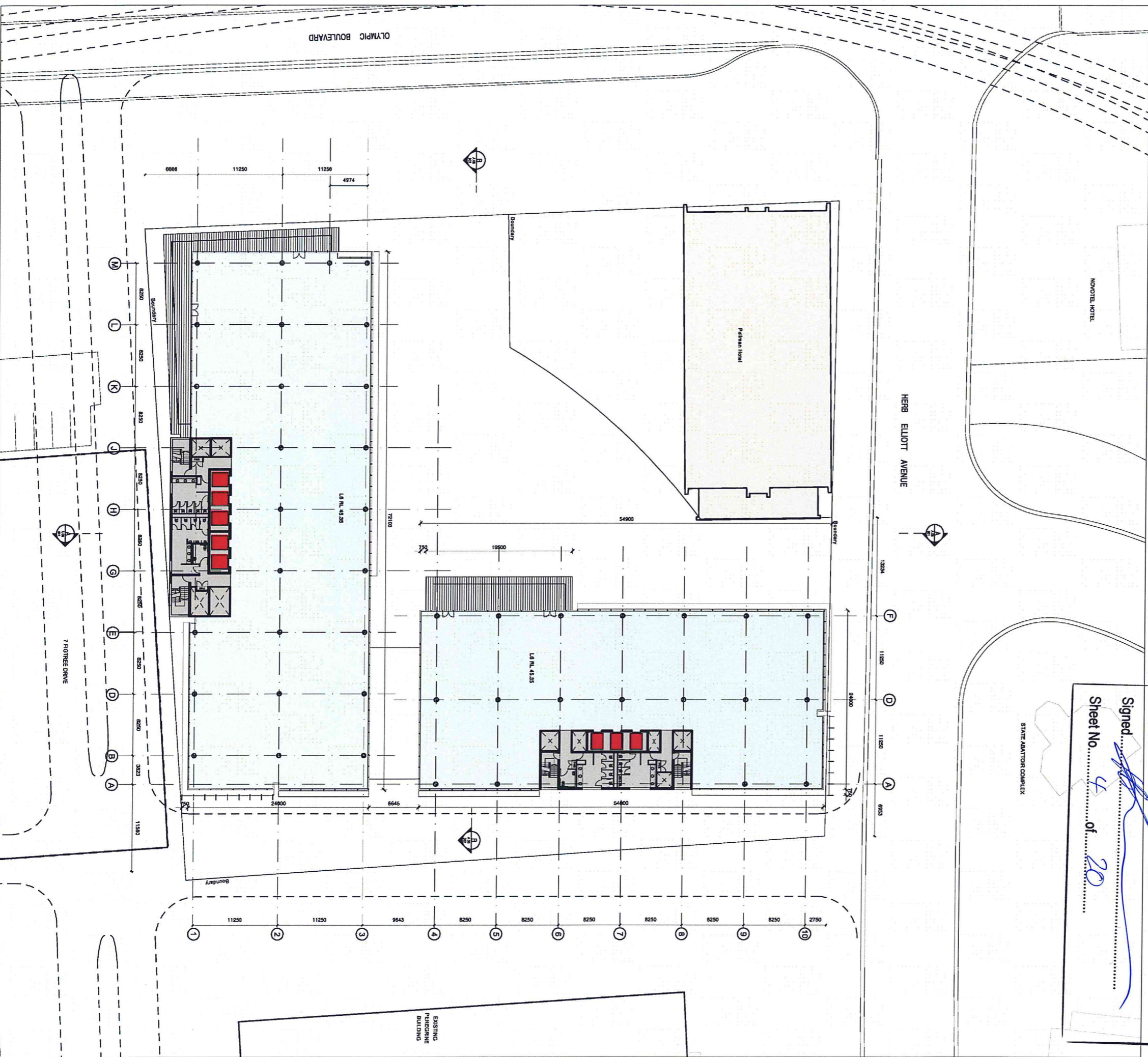
Signed.....

Sheet No.....

4

of 20

STATE ABATOR COMPLEX



BATESSMART™

Site 4B
 Sydney Olympic Park
 Section 75W

General Arrangement Plan - Level 09
 A03.009

Scale 1:500@A3
 Scale 1:250@A1
 BS PROJECT NO. S10665
 17th December 2010



NSW GOVERNMENT
 Planning

Issued under the Environmental Planning and Assessment Act 1979

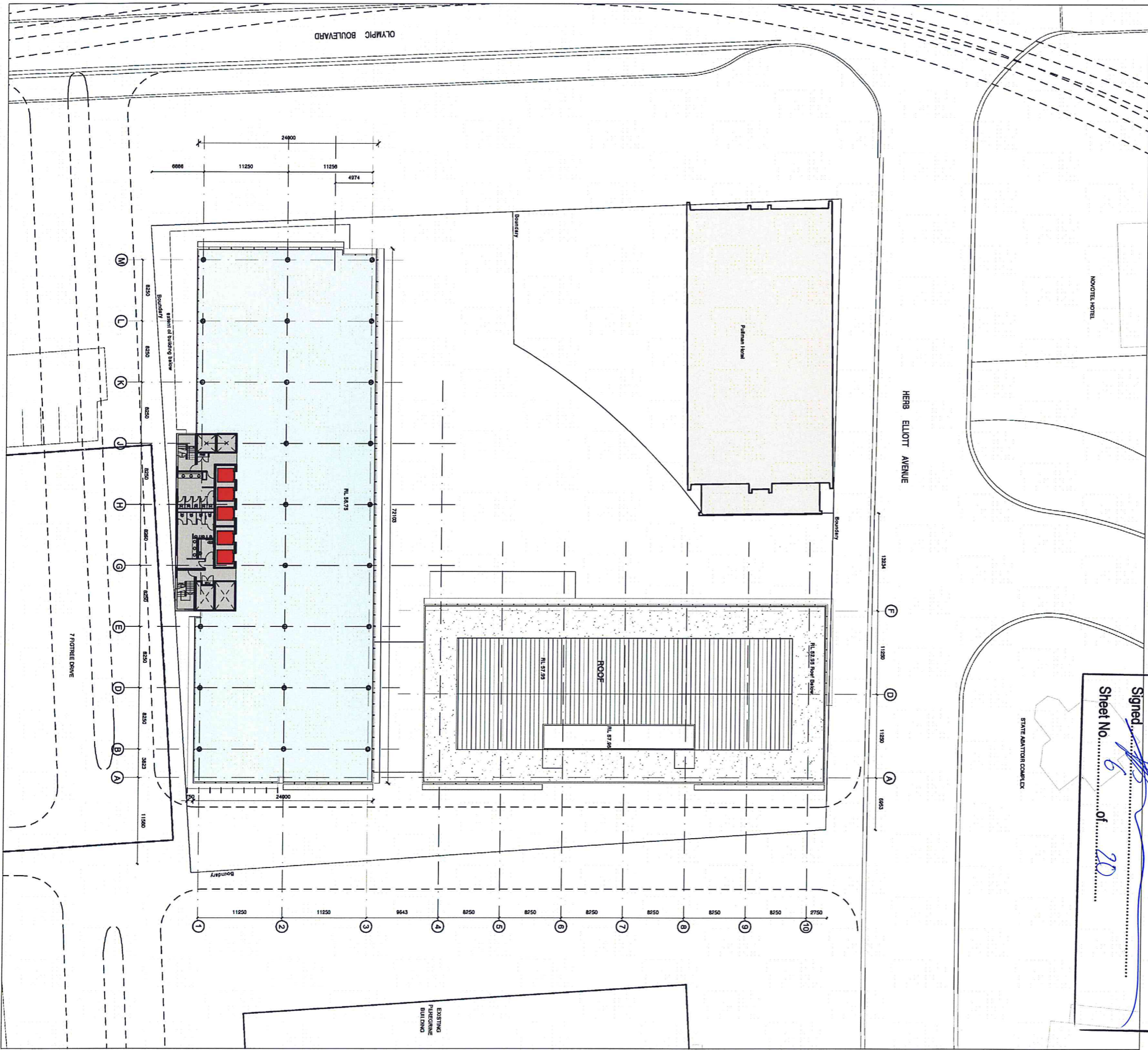
Approved Section 75W Modification Application

No. MPO6-0273-MOD1 granted on the 12/08/11

in respect to MP 06-0273

Signed [Signature]

Sheet No. 6 of 20



BATESSMART™

Site 4B
 Sydney Olympic Park
 Section 75W

General Arrangement Plan - Level 10
 A03.010

Scale 1:500@A3
 Scale 1:250@A1
 BS PROJECT NO. S10865
 17th December 2010



Issued under the Environmental Planning and Assessment Act 1979

Approved Section 75W Modification Application

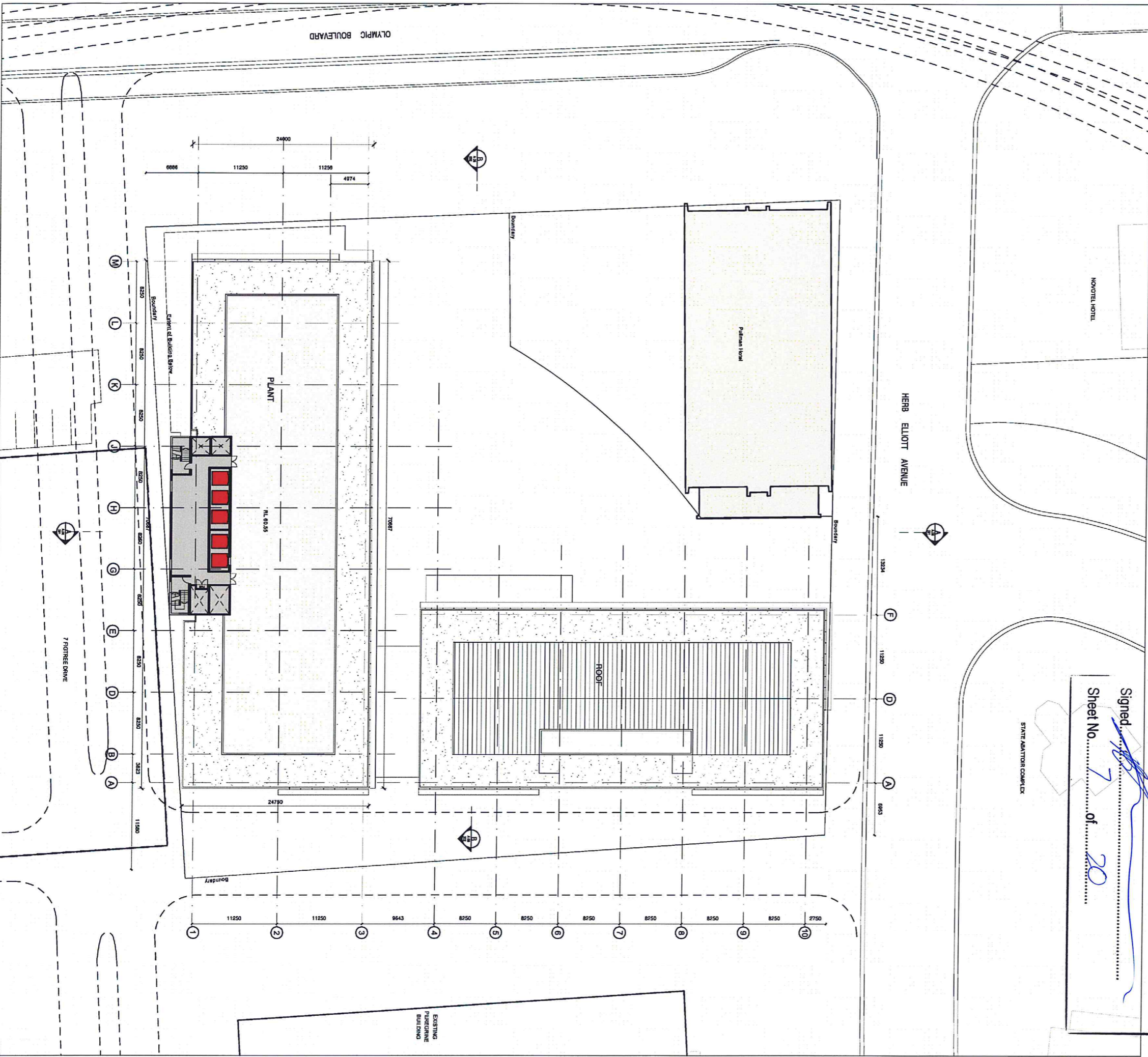
No. ~~1108~~ ~~0273~~ ~~11000~~ granted on the 12/08/2011

In respect to MP ~~06~~ ~~0273~~

Signed *[Signature]*

Sheet No 7 of 20

STATE ADAPTION COMPLEX



BATESSMART™

Site 4B
 Sydney Olympic Park
 Section 75W

General Arrangement Plan - Roof Plan
 A03.012

Scale 1:500@A3
 Scale 1:250@A1
 BS PROJECT NO. S10665
 17th December 2010



NSW GOVERNMENT
 Planning

Issued under the Environmental Planning and Assessment Act 1979

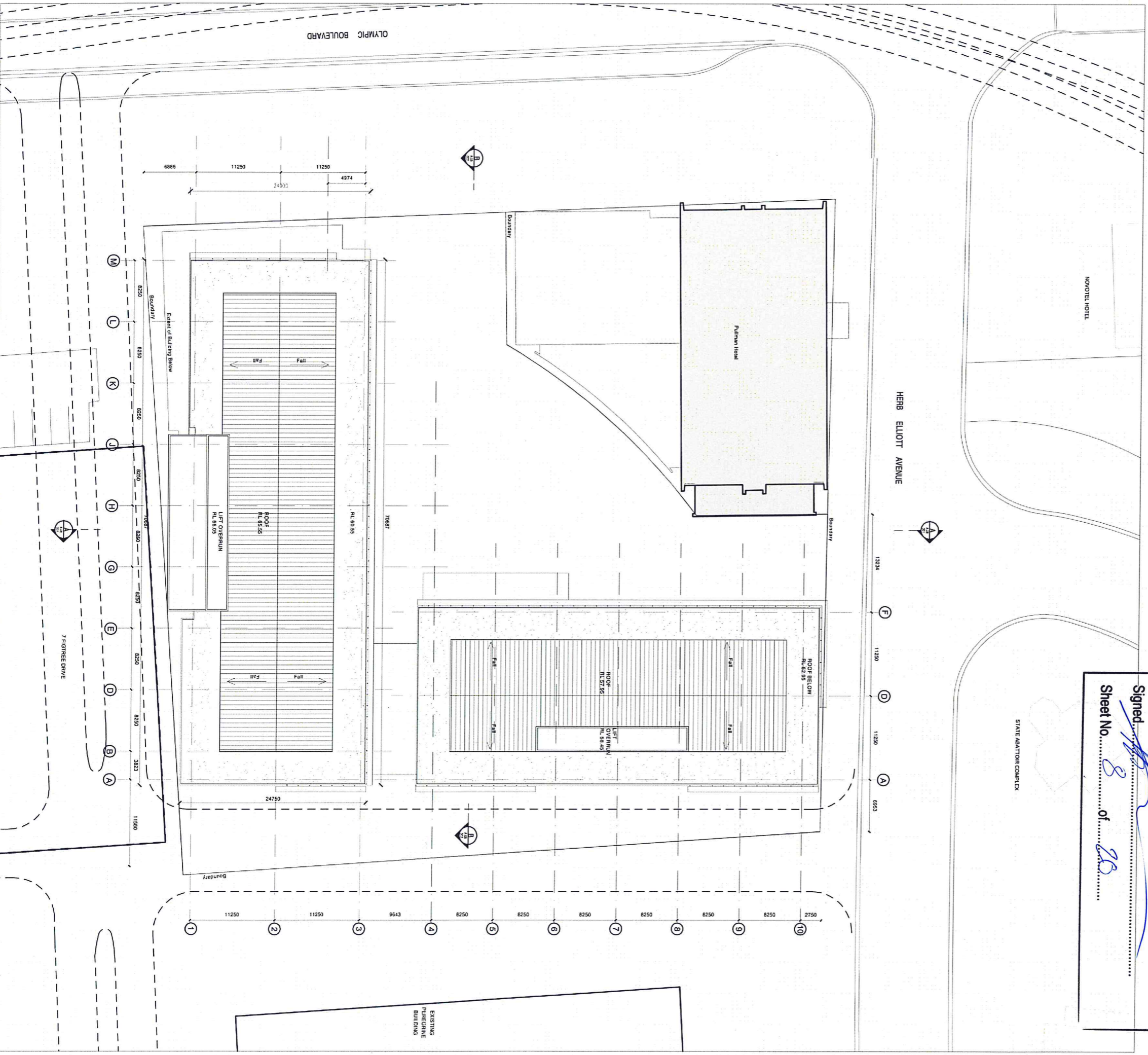
Approved Section 75W Modification Application

No. *W106-022-0001*, granted on the *12/08/2011*

in respect to MP *06-0275*

Signed *[Signature]*

Sheet No. *8* of *28*



BATESSMART™

Site 4B
Sydney Olympic Park
Section 75W

General Arrangement Plan - Typical Level Basement
A03.B02



NSW GOVERNMENT
Planning

Issued under the Environmental Planning and Assessment Act 1979

Approved Section 75W Modification Application

No. 1006-0273/MP/01 granted on the 12/08/2011

In respect to MP D6-0273

Signed *[Signature]*

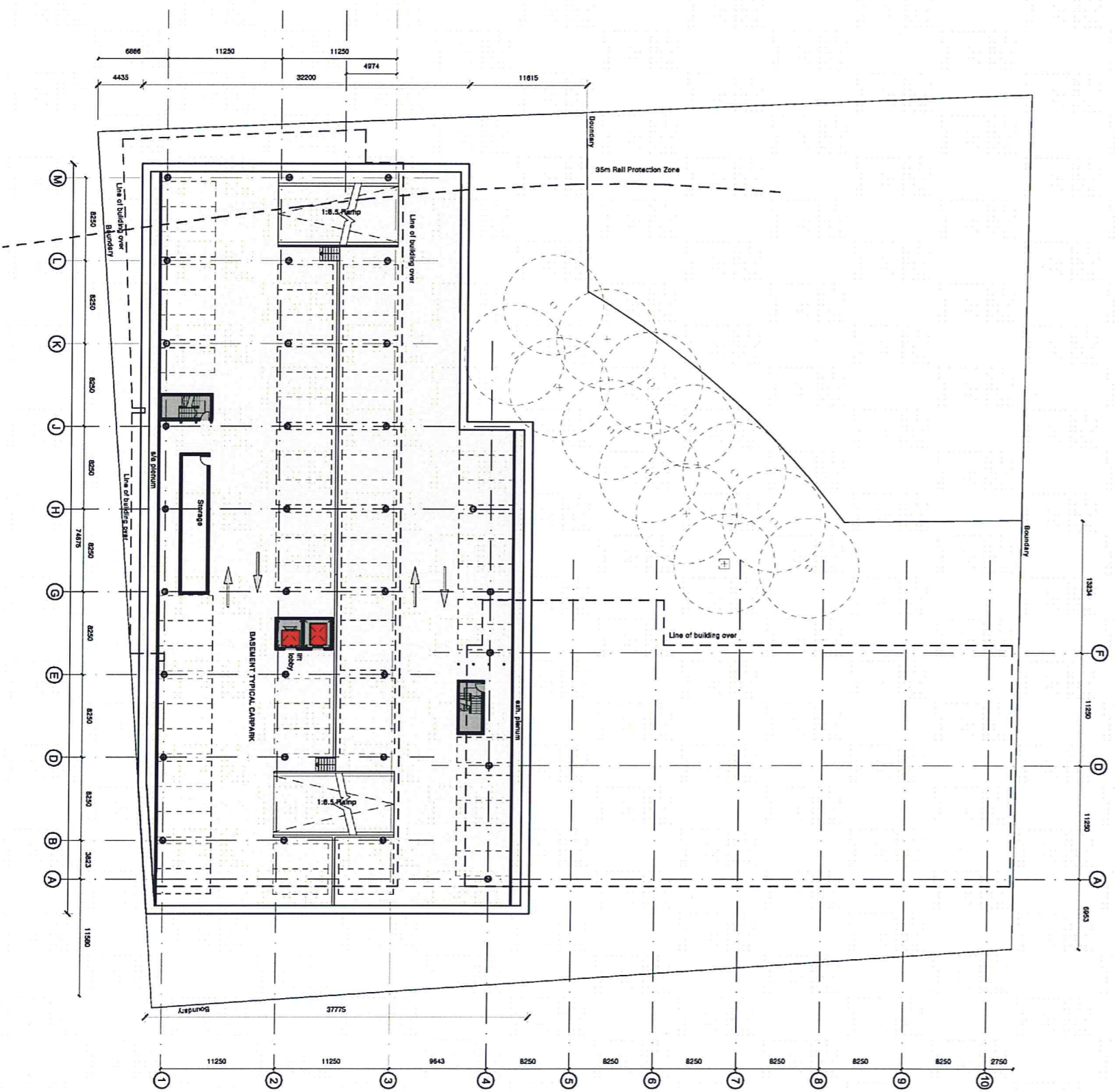
Sheet No. 11 of 20

Scale 1:500@A3
Scale 1:250@A1



BS PROJECT NO. S10665
17th December 2010

B1	- 31 cars
B1 Mezzanine	- 35 cars
B2	- 68 cars
B3	- 68 cars
B4	- 71 cars
Total -	- 273 cars



BATESSMART™

Site 4B
Sydney Olympic Park
Section 75W

General Arrangement Elevation - East
A07.002

Scale 1:500@A3



BS PROJECT NO. S10665

17th December 2010



NSW GOVERNMENT
Planning

Issued under the Environmental Planning and Assessment Act 1979

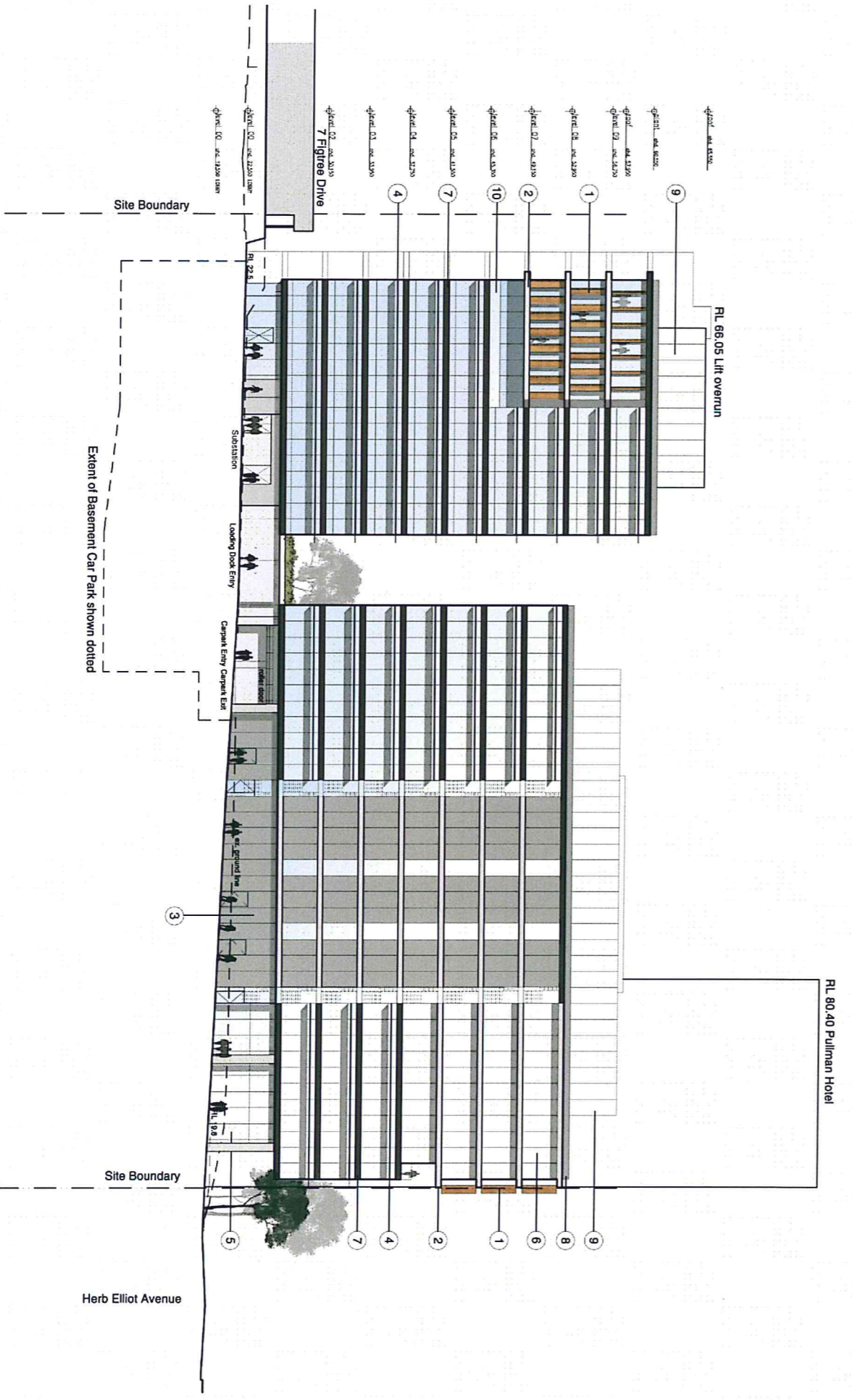
Approved Section 75W Modification Application

No. 11996-0173 (APP) granted on the 12/08/2011

in respect to MP 06-0173

Signed

Sheet No. 13 of 20



- External Finishes Legend**
1. Vertical timber (or similar) louvre
 2. Concrete (or similar) slab edge
 3. Concrete (or similar) cladding
 4. Horizontal anodised aluminium sunshade
 5. Aluminium framed clear glass shopfront glazing
 6. Double glazed unit, colour crystal grey (or similar)
 7. Glass spandrel with dark aluminium back panel
 8. Anodised aluminium cladding to parapet
 9. Powdercoated aluminium louvre
 10. Glazed balustrade

Scale 1:500 @ A3



BS PROJECT NO. S10665
 17th December 2010



NSW GOVERNMENT
 Planning

Issued under the Environmental Planning and Assessment Act 1979

Approved Section 75W Modification Application

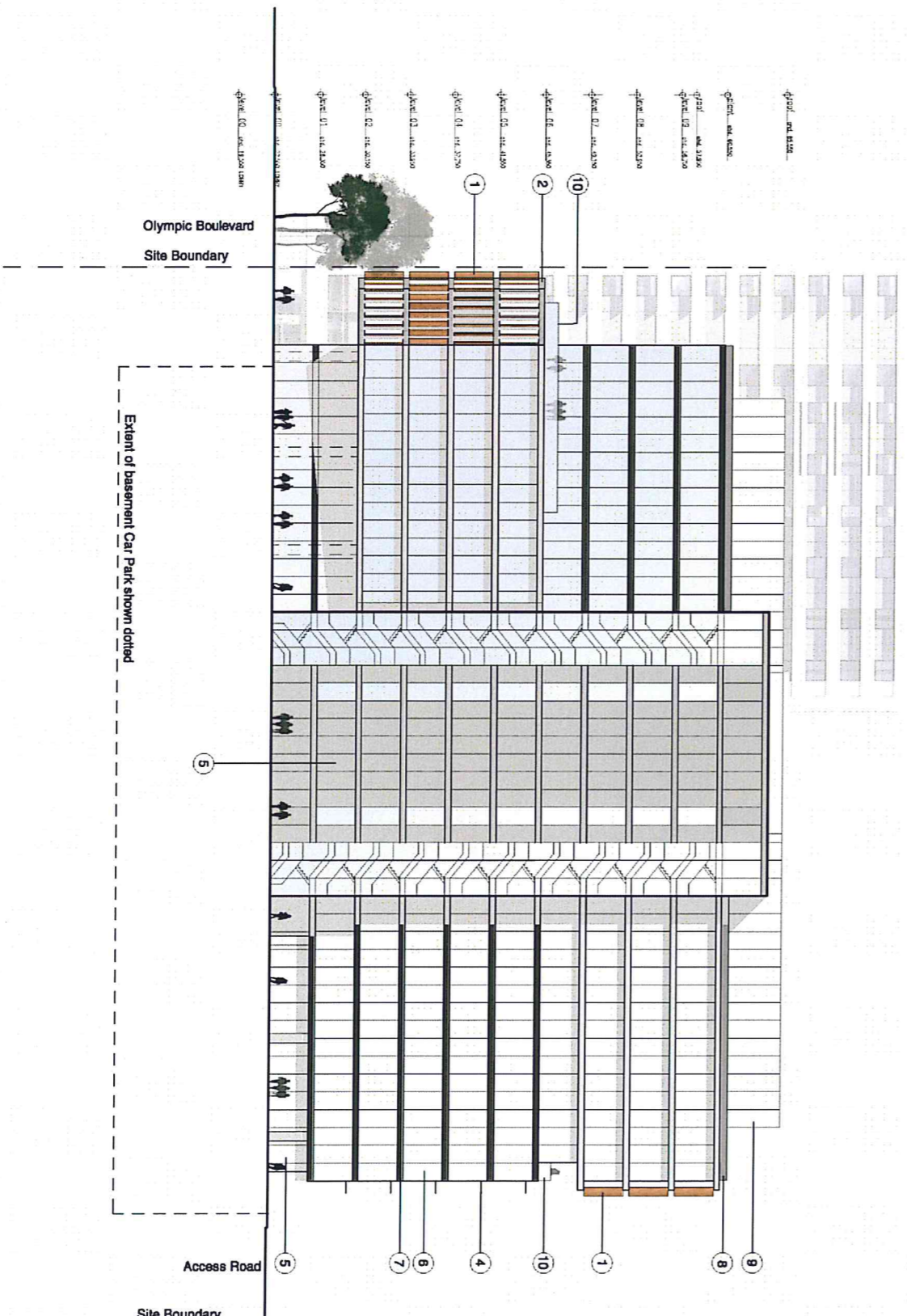
No. 11006-0273 (M081) granted on the 12/08/2011

In respect to MP. 06-0273

Signed [Signature]

Sheet No. 14 of 26

RL 80.40 Pullman Hotel



- External Finishes Legend**
1. Vertical timber (or similar) louvre
 2. Concrete slab edge
 3. Concrete cladding
 4. Horizontal anodised aluminium sunshade
 5. Aluminium framed clear glass shopfront glazing
 6. Double glazed unit, colour crystal grey (or similar)
 7. Glass spandrel with dark aluminium back panel
 8. Anodised aluminium cladding to parapet
 9. Powdercoated aluminium louvre
 10. Glazed ballustrade

BATESSMART™

Site 4B
Sydney Olympic Park
Section 75W

General Arrangement Elevation - West
A07.004

Scale 1:500 @ A3



BS PROJECT NO. S10665
17th December 2010



NSW GOVERNMENT
Planning

Issued under the Environmental Planning and Assessment Act 1979

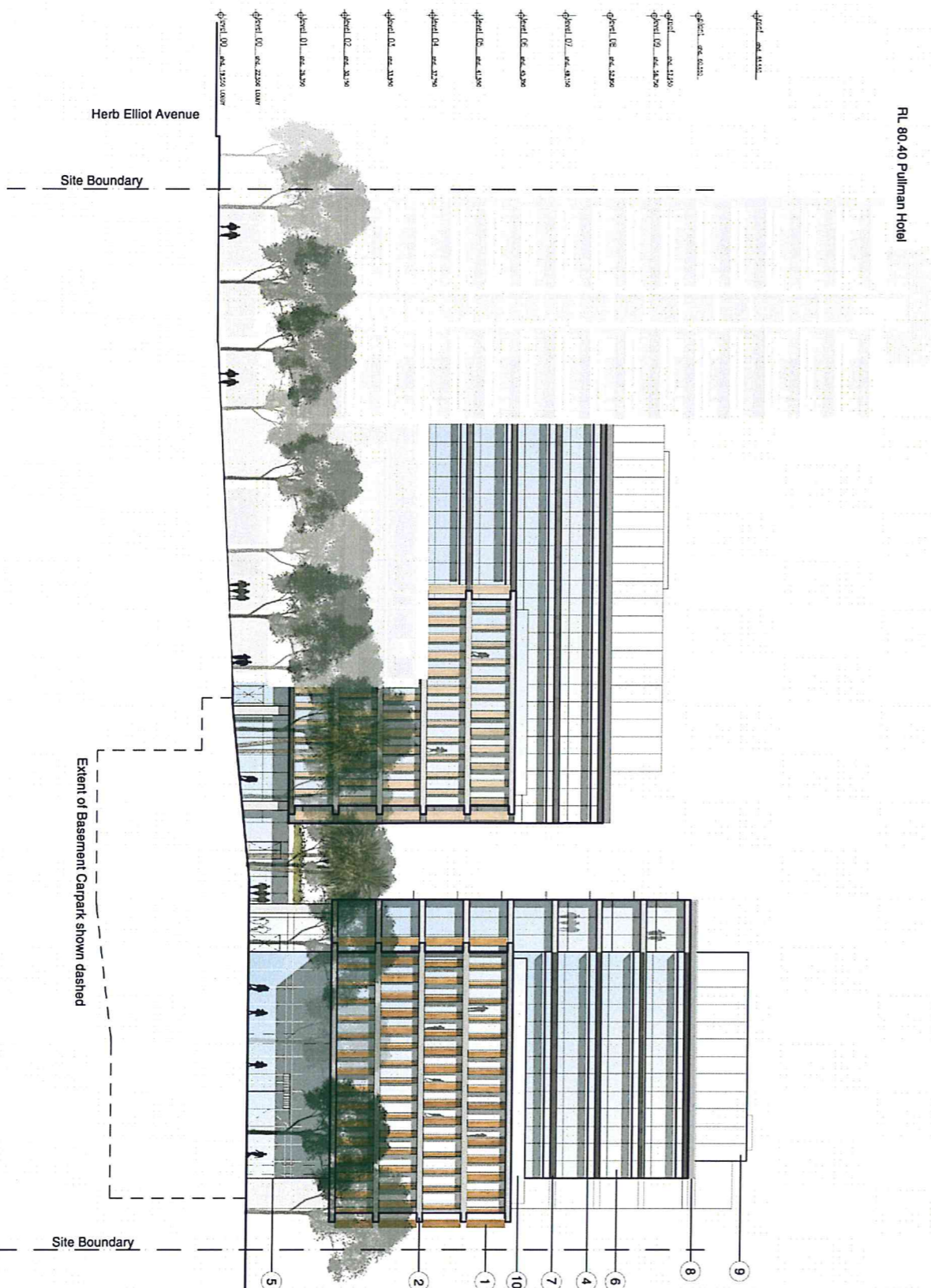
Approved Section 75W Modification Application

No. 1106-0273 (MP), granted on the 12/02/2011

in respect to MP 06-0273

Signed

Sheet No. 15 of 20



- External Finishes Legend**
1. Vertical timber (or similar) louvre
 2. Concrete (or similar) slab edge
 3. Concrete (or similar) cladding
 4. Horizontal anodised aluminium sunshade
 5. Aluminium framed clear glass shopfront glazing
 6. Double glazed unit, colour crystal grey (or similar)
 7. Glass spandrel with dark aluminium back panel
 8. Anodised aluminium cladding to parapet
 9. Powdercoated aluminium louvre
 10. Glazed balustrade

Scale 1:500 @ A3



BS PROJECT NO. S10665
 17th December 2010



NSW GOVERNMENT
 Planning

Issued under the Environmental Planning and Assessment Act 1979

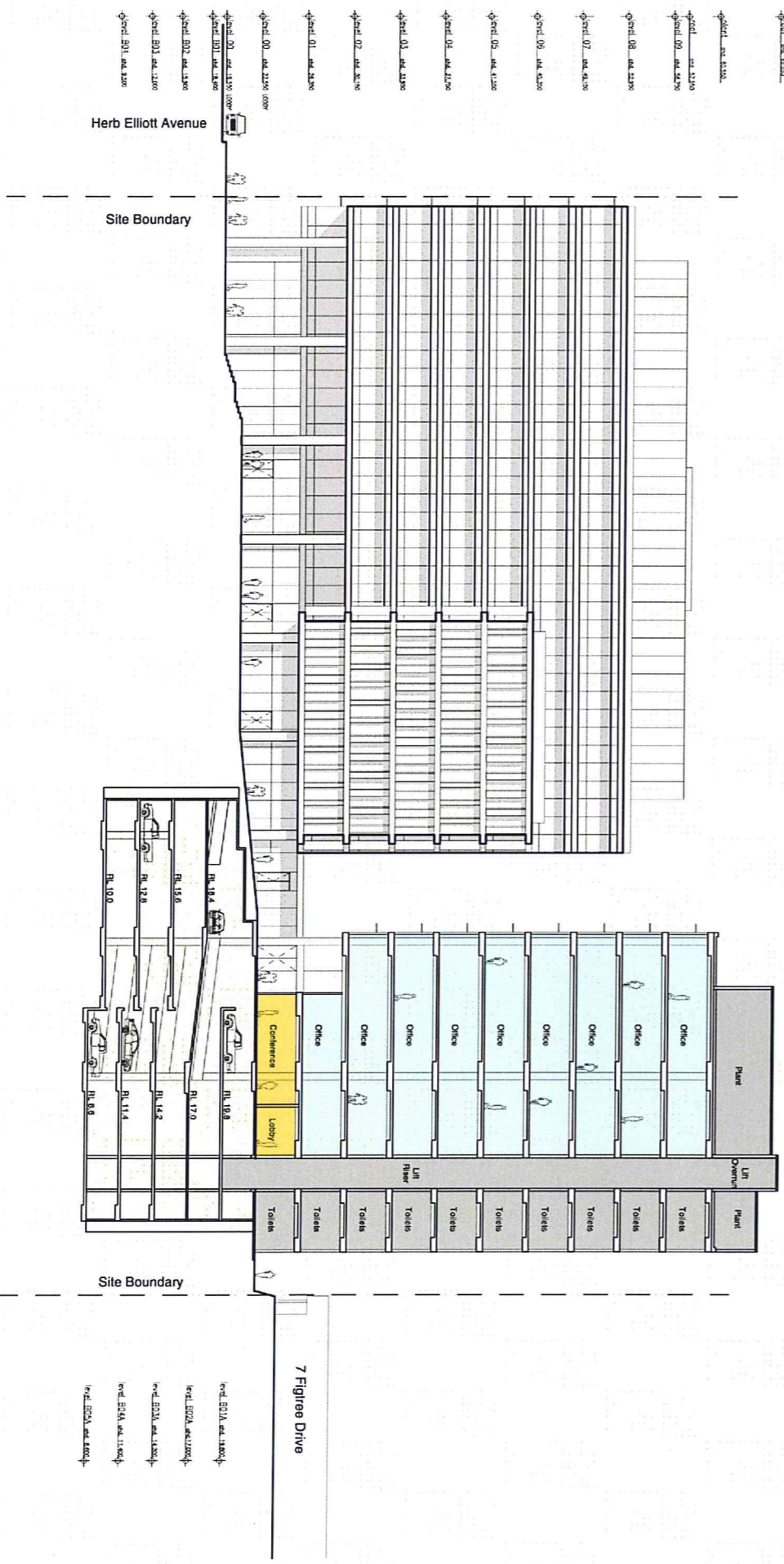
Approved Section 75W Modification Application

No. *11/116-0273 (MP)*, granted on the *12/08/2011*

in respect to MP *06-0273*

Signed *[Signature]*

Sheet No. *16* of *20*



Scale 1:500 @ A3



BS PROJECT NO. S10665
 17th December 2010



NSW GOVERNMENT
 Planning

Issued under the Environmental Planning and Assessment Act 1979

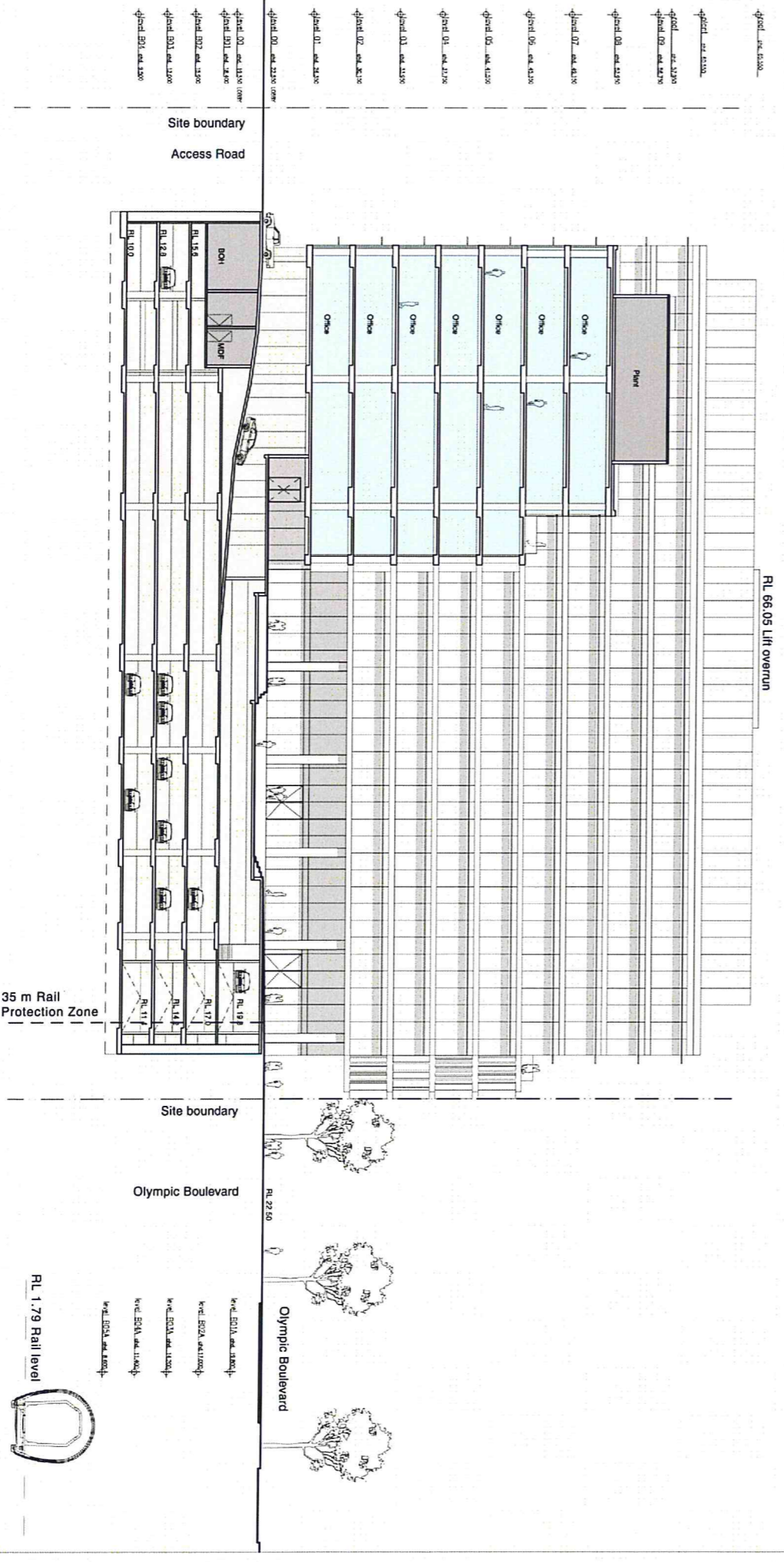
Approved Section 75W Modification Application

No. *A08-02-75-0002* granted on the *12/08/2011*

in respect to MP. *08-02-73*

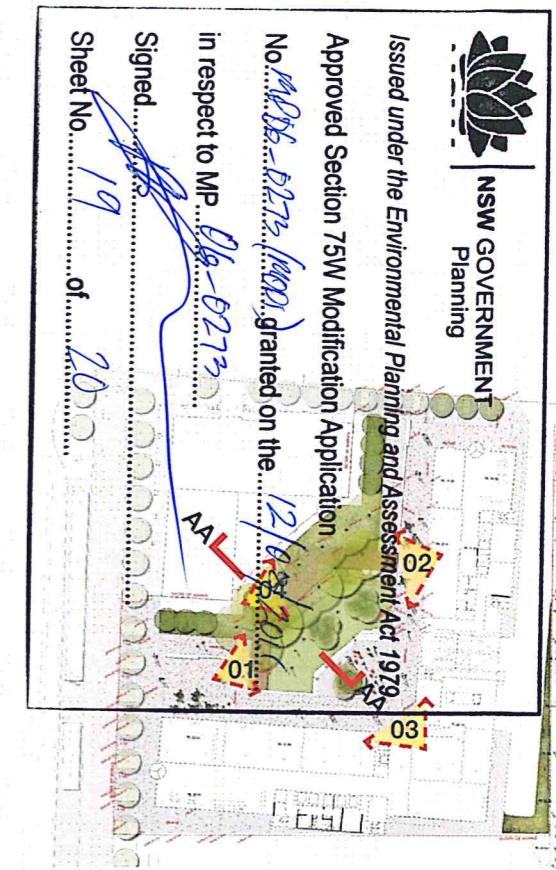
Signed *[Signature]*

Sheet No. *17* of *20*





Landscape Section AA: scale 1:75@A1



Key Plan



01: Indicative Perspective



02: Indicative Perspective



03: Indicative Perspective



04: Indicative Perspective

