

NOTES
 Verify Dimensions on site prior to commencement of work. Check existing RL's on site. Advise Architect of any discrepancies before commencement. Allow for adjustments to suit discrepancies.
 Comply with relevant authorities requirements. Comply with Building Code of Australia requirements. Comply with relevant Australian Standards for materials and construction practices.
 Do not scale from drawings.

0m 1m 2m 4m 6m

LEGEND

AL	Aluminium	LM	Laminate
AP	Access Panel	LDY	Laundry
BALC	Balcony	LV	Louvre
BL	Bd Light	M	Male toilet
DP	Downpipe	MAS	Masonry
DWR	Downpipe	MEM	Membrane
CLR	Clear	MR	Metal roof
CT	Ceramic Tile	MTL	Metal
CTR	Centre	MI	Mirror
CH	Clothes Hook	NOM	Nominal
CCN	Concrete	OP	Opaque glass
CCOS	Confirm on site	PB	Plasterboard
CP	Control Panel (Air Con)	RC	Reinforced Concrete
CPT	Carpet	REM	Remaining
EDB	Electrical distribution board	RU	Rubber Flooring
ESM	Electrical Service Mains	SD	Slud
EXH	Exhaust	SM	Similar
F	Female toilet	SS	Stainless Steel
FC	Fibre cement	SSL	Structural Steel Level
FCL	Finished Ceiling Level	STL	Steel
FD	Floor distributor	TFD	To Future Detail
FFL	Finished Floor Level	TGSI	Tactile Ground Surface Indicators
FHR	Fire hose reel	TM	Timber painted
FR	Fridge	TMR	To manufacturer's recommendations
FPB	FYRCHek plasterboard	UPS	Unrated Privacy Screen
FXD	GL Fixed Glass	USL	Underlaid Steel Level
INS	Insulation	WC	Water closet
GL	Glass	WU	Water closet
MU	Metal Gutter	WS	White board strip
KS	Key Swipe		

NOTE:
 2 BED — Denotes room type
 318 — Denotes room number

REV.	AMENDMENTS	DATE
A3	North screen deleted	15.12.10
A2	Modifications to submit to DoP	22.11.10
A1	Modifications to submit to DoP	17.11.10
p07	Amendments to submit to DoP	28.03.09
p06	Amendments to submit S75W	18.03.09
p05	Amendments to submit to DoP	18.03.09
p04	Amendments to submit to DoP	16.03.09
p03	Amendments to submit to DRP	03.11.08
p02	Amendments from DRP meeting	06.05.08
p01	Submitted to DRP	30.04.08

REV.	AMENDMENTS	DATE
ITC	SERVICES ENGINEER - Hydraulic, Electrical, Mechanical Level 7 33 York St, Sydney NSW 2000 T 02 9495 8100	F 02 9495 8111
	STRUCTURAL ENGINEER Taylor Thomson Whiting Pty Ltd 48 Chandos Street St Leonards NSW 2065 T 02 9439 7288	F 02 9123 4567
	PLANNER Design Collaborative Level 4, 225 Clarence Street Sydney NSW 2000 T 02 9262 3200	F 02 9262 3601
	ARCHAEOLOGY / HERITAGE CONSULTANT Golden Meekay Logan 78 George Street Redfern NSW 2016 T 02 9319 4611	F 02 9319 4383
	FIRE ENGINEER Fire Engineering Design PTY Ltd. PO Box 226 Balmain NSW 2041 T 02 9555 1926	F 02 9555 2427
	BCA CONSULTANT Steve Watson & Partners Level 5, 432 Kent Street, Sydney NSW 2000 T 02 9283 6555	F 02 9283 6500
	PROJECT MANAGER McNally Management Level 9, 47 York Street Sydney NSW 2000 T 02 9299 3800	F 02 9299 3980
	CLIENT YHA NSW 422 Kent Street, Sydney NSW 2000 T 02 8287 0405	F 02 9281 1969

NOTE
 1: New columns are proposed to be installed above existing columns. Final locations will be confirmed through site measurements prior to installation.

NOTE
 2: Heights of screens are proposed to align with existing roof profiles. Final heights will be confirmed through site measurements prior to installation.

Colour Key: Proposed Modifications

- Proposed roof sheeting
- Proposed glazing
- Proposed steelwork

Tzannes Associates ARCHITECTURE URBAN DESIGN
 55 Myrtle Street
 Chippendale NSW 2008
 Sydney Australia
 T +61 2 9319 3744
 F +61 2 9558 1770
 tzannes@tzannes.com.au

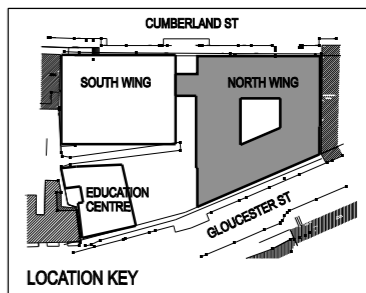
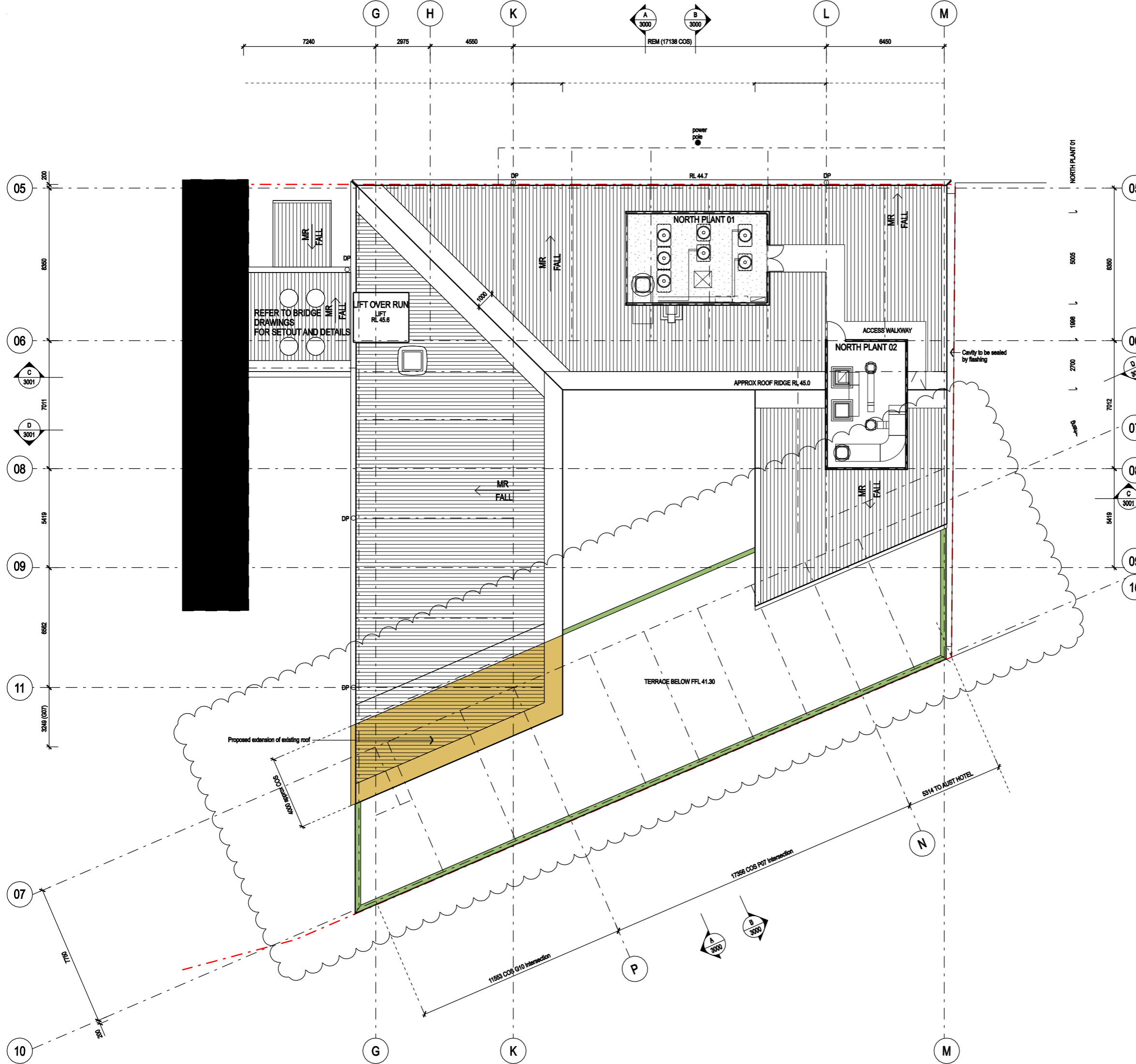
PRELIMINARY ONLY
 NOT FOR CONSTRUCTION

SYDNEY HARBOUR YHA
 Cumberland Street
 The Rocks NSW

North Wing - Level 3 Plan

SCALE	DRAWN	CHECKED	DATE
1:100 @ A1	CMARIAL	-	Feb 2007
1:200 @ A3			

PROJECT	DRAWING	REVISION
06029	1103	A3



NOTES

Verify Dimensions on site prior to commencement of work. Check existing RL's on site. Advise Architect of any discrepancies before commencement. Allow for adjustments to suit discrepancies.

Comply with relevant authorities requirements. Comply with Building Code of Australia requirements. Comply with relevant Australian Standards for materials and construction practice.

Do not scale from drawings.

0m 1m 2m 4m 6m

LEGEND

AL	Aluminium	LM	Laminate
AP	Access Panel	LDY	Laundry
BALC	Balcony	LV	Louvre
BL	Bd Light	M	Male toilet
DP	Downpipe	MAS	Masonry
DWR	Drawer	MEM	Membrane
CLR	Clear	MR	Metal roof
CT	Ceramic Tile	MTL	Metal
CTR	Centre	MI	Mirror
CH	Clothes Hook	NOM	Nominal
CON	Concrete	OP	Opaque glass
COS	Confirm on site	PB	Plasterboard
CP	Control Panel (Air Con)	RC	Reinforced Concrete
CPT	Carpet	REM	Remaining
EDB	Electrical distribution board	RU	Rubber Flooring
ESM	Electrical Service	SD	Stud
EXH	Exhaust	SS	Stainless Steel
F	Female toilet	SSL	Structural Steel Level
FC	Fibre cement	STL	Steel
FCL	Finished Ceiling Level	TFD	To Future Detail
FD	Floor distributor	TGSI	Tactile Ground Surface Indicators
FFL	Finished Floor Level	TM	Timber painted
FHR	Fire hose reel	TM	Timber painted
FR	Fridge	TM	Timber painted
FPB	FYR-CHEK plasterboard	TMR	To manufacturer's recommendations
FXD GL	Fixed Glass	UPS	Urinal Privacy Screen
INS	Insulation	USL	Underside Steel Level
GL	Glass	WC	Water closet
GU	Metal Gutter	WS	White board strip
KS	Key Swipe		

NOTE:

2 BED — Denotes room type

318 — Denotes room number

REV.	AMENDMENTS	DATE
A3	North screen deleted	15.12.10
A2	Modifications to submit to DoP	22.11.10
A1	Modifications to submit to DoP	17.11.10
p07	Amendments to submit to DoP	28.03.09
p06	Amendments to submit S75W	18.03.09
p05	Amendments to submit to DoP	18.03.09
p04	Amendments to submit to DoP	16.03.09
p03	Amendments to submit to DRP	03.11.08
p02	Amendments from DRP meeting	06.05.08
p01	Submitted to DRP	30.04.08

REV.	AMENDMENTS	DATE
SERVICES ENGINEER - Hydraulic, Electrical, Mechanical		
ITC Level 7 33 York St, Sydney NSW 2000 T 02 9485 8100 F 02 9485 8111		
STRUCTURAL ENGINEER		
Taylor Thomson Whitting Pty Ltd 48 Chandos Street St Leonards NSW 2065 T 02 9439 7286 F 02 9123 4567		
PLANNER		
Design Collaborative Level 4, 225 Clarence Street Sydney NSW 2000 T 02 9262 3200 F 02 9262 3601		
ARCHAEOLOGY / HERITAGE CONSULTANT		
Goddard Mackay Logan 78 George Street Redfern NSW 2016 T 02 9319 4811 F 02 9319 4383		
FIRE ENGINEER		
Fire Engineering Design PTY Ltd. PO Box 228 Balmain NSW 2041 T 02 9555 1928 F 02 9555 2427		
BCA CONSULTANT		
Steve Watson & Partners Level 5, 432 Kent Street, Sydney NSW 2000 T 02 9283 6555 F 02 9283 6500		
PROJECT MANAGER		
McNally Management Level 6, 47 York Street Sydney NSW 2000 T 02 9299 3800 F 02 9299 3980		
CLIENT		
YHA NSW 422 Kent Street, Sydney NSW 2000 T 02 8287 0405 F 02 9261 1969		

NOTE

1: New columns are proposed to be installed above existing columns. Final locations will be confirmed through site measurements prior to installation.

2: Heights of screens are proposed to align with existing roof profiles. Final heights will be confirmed through site measurements prior to installation.

Colour Key: Proposed Modifications

- Proposed roof sheeting
- Proposed glazing
- Proposed steelwork

Tzannes Associates ARCHITECTURE URBAN DESIGN

63 Myrtle Street
Chippendale NSW 2008
Sydney Australia
T +61 2 9379 3744
F +61 2 9558 1170
tzannes@tzannes.com.au

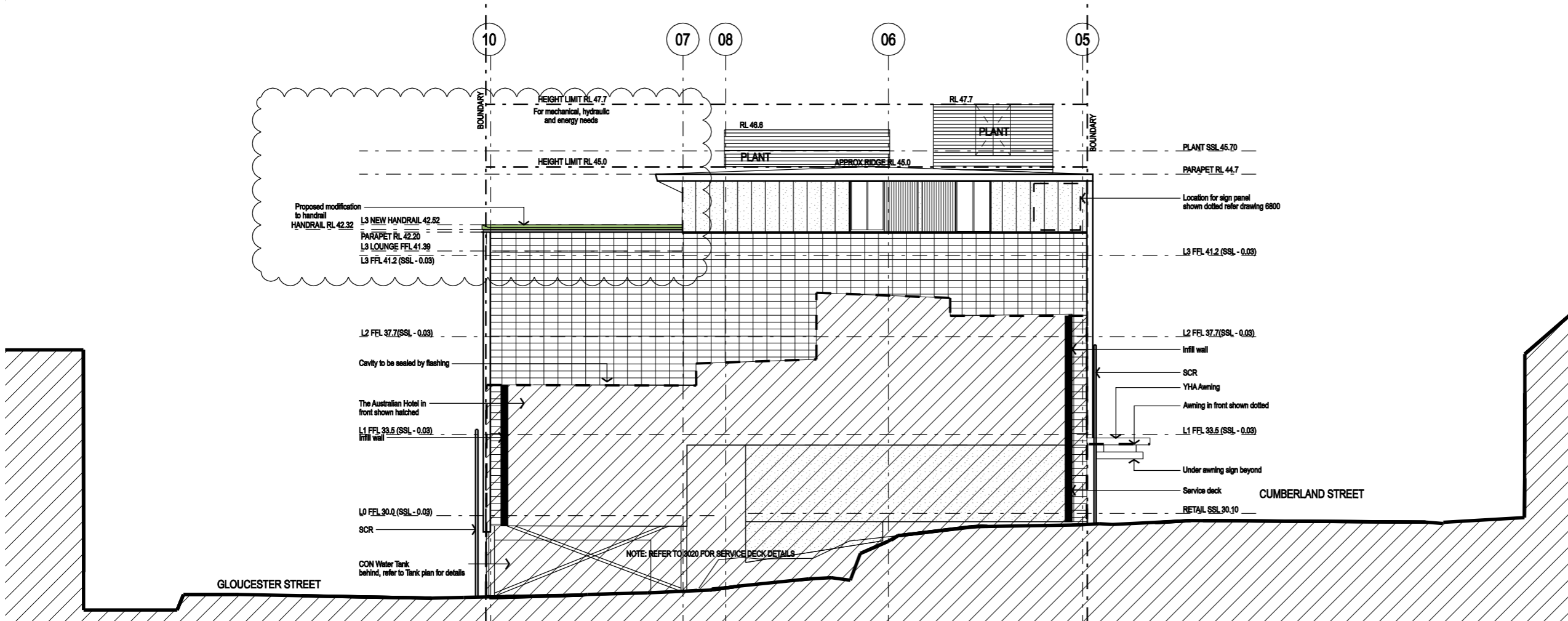
PRELIMINARY ONLY
NOT FOR CONSTRUCTION

SYDNEY HARBOUR YHA

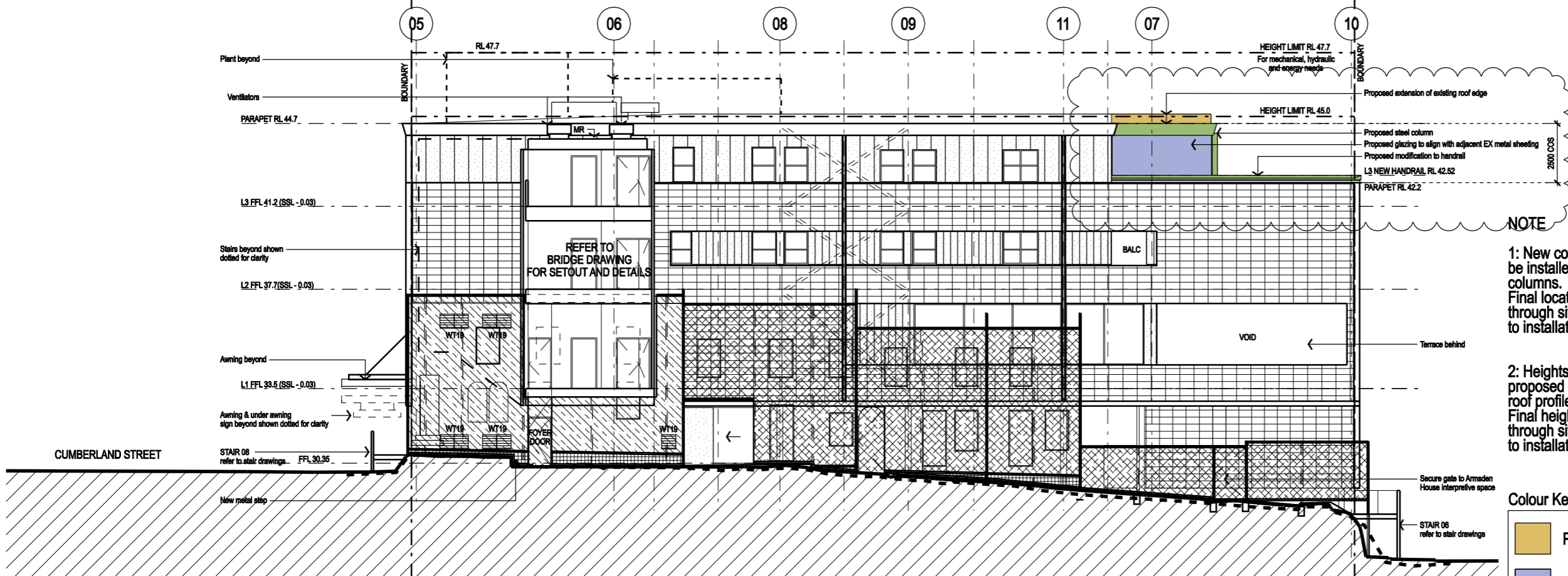
Cumberland Street
The Rocks NSW

North Wing - Roof Plan

SCALE	DRAWN	CHECKED	DATE
1:100 @ A1	CM/AR/L	-	Feb 2007
1:200 @ A3			
PROJECT	DRAWING	REVISION	
06029	1104	A3	



01 North Wing - North Elevation
Scale 1:100



02 North Wing - South Elevation
Scale 1:100

Window Note:
Windows are shown on elevations with shutters open.

Shutter shown in open position

Shutter shown in closed position
(window behind shown dotted)

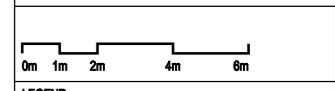
Key

	Terracotta
	Metal with seams
	Metal flat
	Glass
	Aluminium Shutters
	Aluminium Louvers
	Glass Louvers
	BDRY Precast Wall
	Painted Concrete

NOTES
Verify Dimensions on site prior to commencement of work. Check existing RL's on site. Advise Architect of any discrepancies before commencement. Allow for adjustments to suit discrepancies.

Comply with relevant authorities requirements. Comply with Building Code of Australia requirements. Comply with relevant Australian Standards for materials and construction practice.

Do not scale from drawings.



LEGEND

AL	Aluminium	LM	Laminated
AP	Access Panel	LDY	Laundry
BALC	Balcony	LV	Louvre
BL	Bd Light	M	Male toilet
DP	Downpipe	MAS	Masonry
DWR	Downpipe	MEM	Membrane
CLR	Clear	MR	Metal roof
CT	Ceramic Tile	MTL	Metal
CTR	Centre	MI	Mirror
CH	Chimes Hook	NOM	Nominal
CON	Concrete	OP	Opaque glass
COS	Confirm on site	PB	Plasterboard
CP	Control Panel (Air Con)	RC	Reinforced Concrete
CPT	Carpet	REM	Remaining
EDB	Electrical distribution board	RJ	Rubber Flooring
ESM	Electrical Service Mains	SCR	Metal screen
EXH	Exhaust	SD	Stud
F	Female toilet	SIM	Similar
FC	Fibre cement	SS	Stainless Steel
FCL	Finished Ceiling Level	SSL	Structural Steel Level
FD	Floor distributor	STL	Steel
FEL	Finished Floor Level	TFD	To Future Detail
FHR	Fire hose reel	TGSS	Tactile Ground Surface Indicators
FR	Fridge	TM	Timber painted
FPB	FYRCHCK plasterboard	TMR	To manufacturer's recommendations
FXD GL	Fixed Glass	UPS	Urinal Privacy Screen
INS	Insulation	USL	Underside Steel Level
GL	Glass	WC	Water closet
GU	Metal Gutter	WS	White board strip
KS	Key Swipe		

A3	North screen deleted	15.12.10
A2	Modifications to submit to DoP	22.11.10
A1	Modifications to submit to DoP	17.11.10
p12	Amendments to submit to DoP	02.04.09
p11	Signage Zones amended to submit to SHFA	01.04.09
p10	Amendments to submit S75W	28.03.09
p09	Amendments to submit to DoP	28.03.09
p08	Amendments to submit S75W	28.03.09
p07	Amendments to submit to DoP	28.03.09
p06	Amendments to submit S75W	18.03.09
p05	Amendments to submit to DoP	18.03.09
p04	Amendments to submit to DoP	18.03.09
p03	Amendments to submit to DRP	03.11.08
p02	Amendments from DRP meeting	06.05.08
p01	Submitted to DRP	30.04.08

REV.	AMENDMENTS	DATE
SERVICES ENGINEER - Hydraulic, Electrical, Mechanical		
ITC		
Level 7 33 York St, Sydney NSW 2000		
T 02 9496 8100		F 02 9496 8111
STRUCTURAL ENGINEER		
Taylor Thomson Whitting Pty Ltd		
48 Chandos Street St Leonards NSW 2086		
T 02 9439 7288		F 02 9123 4587
PLANNER		
Design Collaborative		
Level 4, 225 Clarence Street Sydney NSW 2000		
T 02 9282 3200		F 02 9282 3801
ARCHAEOLOGY / HERITAGE CONSULTANT		
Goddard Mackay Logan		
78 George Street Redfern NSW 2016		
T 02 9319 4811		F 02 9319 4383
FIRE ENGINEER		
Fire Engineering Design PTY Ltd.		
PO Box 228 Balmain NSW 2041		
T 02 9555 1926		F 02 9555 2427
BCA CONSULTANT		
Steve Watson & Partners		
Level 5, 432 Kent Street, Sydney NSW 2000		
T 02 9283 6555		F 02 9283 8500
PROJECT MANAGER		
McNally Management		
Level 8, 47 York Street Sydney NSW 2000		
T 02 9299 3900		F 02 9299 3990
CLIENT		
YHA NSW		
422 Kent Street, Sydney NSW 2000		
T 02 8287 0405		F 02 8281 1989

1: New columns are proposed to be installed above existing columns. Final locations will be confirmed through site measurements prior to installation.

2: Heights of screens are proposed to align with existing roof profiles. Final heights will be confirmed through site measurements prior to installation.

Colour Key: Proposed Modifications

	Proposed roof sheeting
	Proposed glazing
	Proposed Additions
	Proposed steelwork

Tzannes Associates ARCHITECTURE URBAN DESIGN

63 Myrtle Street
Chippendale NSW 2008
Sydney Australia
T +61 2 9313 3744
F +61 2 9368 1170
tzannes@tzannes.com.au

PRELIMINARY ONLY
NOT FOR CONSTRUCTION

SYDNEY HARBOUR YHA

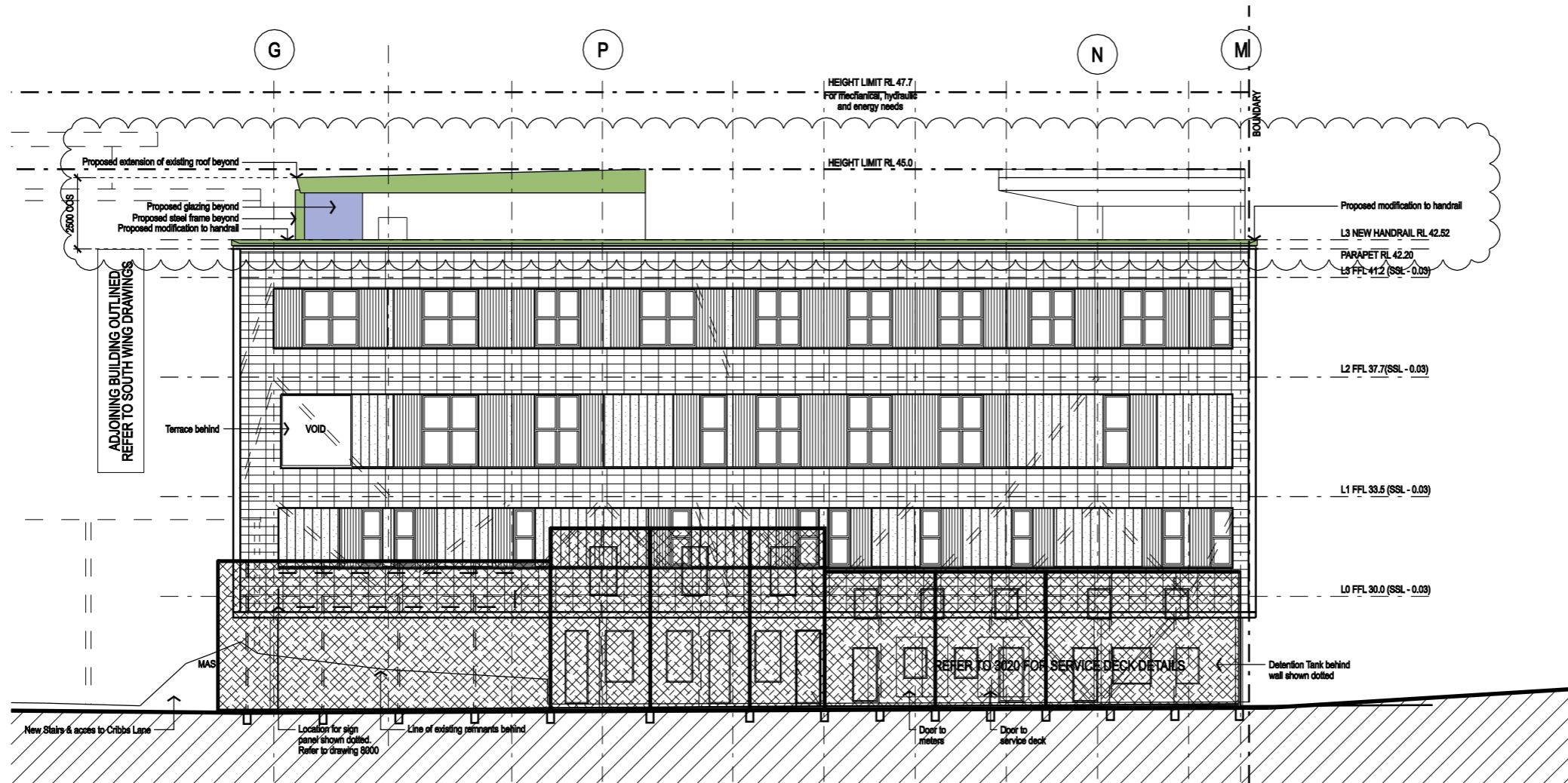
Cumberland Street
The Rocks NSW

North Wing - North & South Elevations

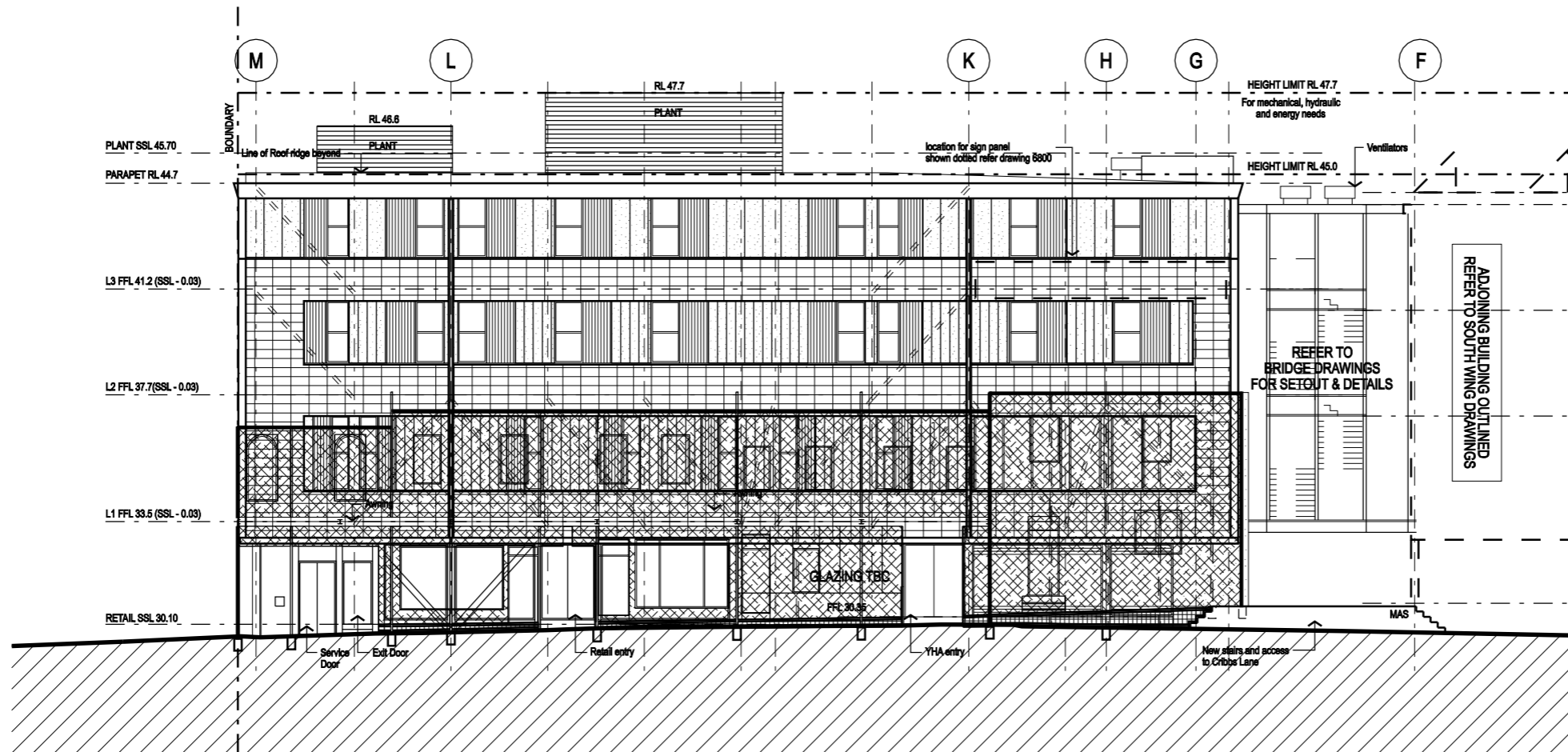
SCALE 1:100 @ A1
1:200 @ A3

DRAWN CMAR
CHECKED -
DATE Feb 2007

PROJECT	DRAWING	REVISION
06029	2000	A3



01 North Wing - East Elevation
Scale 1:100



02 North Wing - West Elevation
Scale 1:100

Window Note:
Windows are shown on elevations with shutters open.

Shutter shown in open position

Shutter shown in closed position (window behind shown dotted)

Key

Terracotta	Aluminium Louvers	Glass Louvers	BDRY Precast Wall	Painted Concrete
Metal with seams	Aluminium Shutters	Glass	Metal flat	

NOTES

Verify Dimensions on site prior to commencement of work. Check existing RL's on site. Advise Architect of any discrepancies before commencement. Allow for adjustments to suit discrepancies.

Comply with relevant authorities requirements. Comply with Building Code of Australia requirements. Comply with relevant Australian Standards for materials and construction practice.

Do not scale from drawings.

0m 1m 2m 4m 6m

LEGEND

AL	Aluminium	LM	Laminate
AP	Access Panel	LDY	Laundry
BALC	Balcony	LV	Louvre
BL	Bl Light	M	Male toilet
DP	Downpipe	MAS	Masonry
DWR	Drawer	MEM	Membrane
CLR	Clear	MR	Metal roof
CT	Ceramic Tile	MTL	Metal
CTR	Centre	MI	Mirror
CH	Clothes Hook	NOM	Nominal
CON	Concrete	OP	Opaque glass
COS	Confirm on site	PB	Plasterboard
CP	Control Panel (Air Con)	RC	Reinforced Concrete
CPT	Carpet	REM	Remaining
EDB	Electrical distribution board	RU	Rubber Flooring
ESM	Electrical Service Mains	SCR	Metal screen
EXH	Exhaust	SD	Stud
F	Female toilet	SIM	Similar
FC	Fibre cement	SS	Stainless Steel
FCL	Finished Ceiling Level	SSL	Structural Steel Level
FD	Floor distributor	STL	Steel
FD	Floor distributor	TFD	To Future Detail
FFL	Finished Floor Level	TGSI	Traffic Ground Surface Indicators
FHR	Fire hose reel	TM	Timber painted
FR	Fridge	TMR	To manufacturer's recommendations
FPB	FYRCHCK plasterboard	UPS	Urinal Privacy Screen
FXD GL	Fixed Glass	USL	Undercase Steel Level
INS	Insulation	WC	Water closet
GL	Glass	WS	White board strip
GU	Metal Gutter		
KS	Key Swipe		

A3	North screen deleted	15.12.10
A2	Modifications to submit to DoP	22.11.10
A1	Modifications to submit to DoP	17.11.10
p12	Amendments to submit to DoP	02.04.09
p11	Signage Zones amended to submit to SHFA	01.04.09
p10	Amendments to submit S75W	28.03.09
p09	Amendments to submit to DoP	28.03.09
p08	Amendments to submit S75W	28.03.09
p07	Amendments to submit to DoP	28.03.09
p06	Amendments to submit S75W	18.03.09
p05	Amendments to submit to DoP	18.03.09
p04	Amendments to submit to DoP	16.03.09
p03	Amendments to submit to DoP	03.11.08
p02	Amendments from DRP	08.05.08
p01	Submitted to DRP	30.04.08

REV.	AMENDMENTS	DATE
SERVICES ENGINEER - Hydraulic, Electrical, Mechanical		
ITC		
Level 7 33 York St, Sydney NSW 2000		
T 02 9495 8100		F 02 9495 8111
STRUCTURAL ENGINEER		
Taylor Thomson Whiting Pty Ltd		
48 Chandos Street St Leonards NSW 2085		
T 02 9439 7285		F 02 9123 4567
PLANNER		
Design Collaborative		
Level 4, 225 Clarence Street Sydney NSW 2000		
T 02 9282 3200		F 02 9282 3601
ARCHAEOLOGY / HERITAGE CONSULTANT		
Goddard Mackay Logan		
78 George Street Redfern NSW 2016		
T 02 9319 4611		F 02 9319 4383
FIRE ENGINEER		
Fire Engineering Design PTY Ltd.		
PO Box 228 Balmain NSW 2041		
T 02 9555 1926		F 02 9555 2427
BCA CONSULTANT		
Steve Watson & Partners		
Level 5, 432 Kent Street, Sydney NSW 2000		
T 02 9293 8555		F 02 9293 8500
PROJECT MANAGER		
McNally Management		
Level 9, 47 York Street Sydney NSW 2000		
T 02 9259 3800		F 02 9259 3960
CLIENT		
YHA NSW		
422 Kent Street, Sydney NSW 2000		
T 02 8287 0405		F 02 8281 1969

NOTE

1: New columns are proposed to be installed above existing columns. Final locations will be confirmed through site measurements prior to installation.

2: Heights of screens are proposed to align with existing roof profiles. Final heights will be confirmed through site measurements prior to installation.

Colour Key: Proposed Modifications

- Proposed roof sheeting
- Proposed glazing
- Proposed steelwork

Tzannes Associates ARCHITECTURE URBAN DESIGN

65 Myrtle Street
Cherrydale NSW 2008
Sydney Australia
T +61 2 9399 3744
F +61 2 9398 1170
tzannes@tzannes.com.au

PRELIMINARY ONLY
NOT FOR CONSTRUCTION

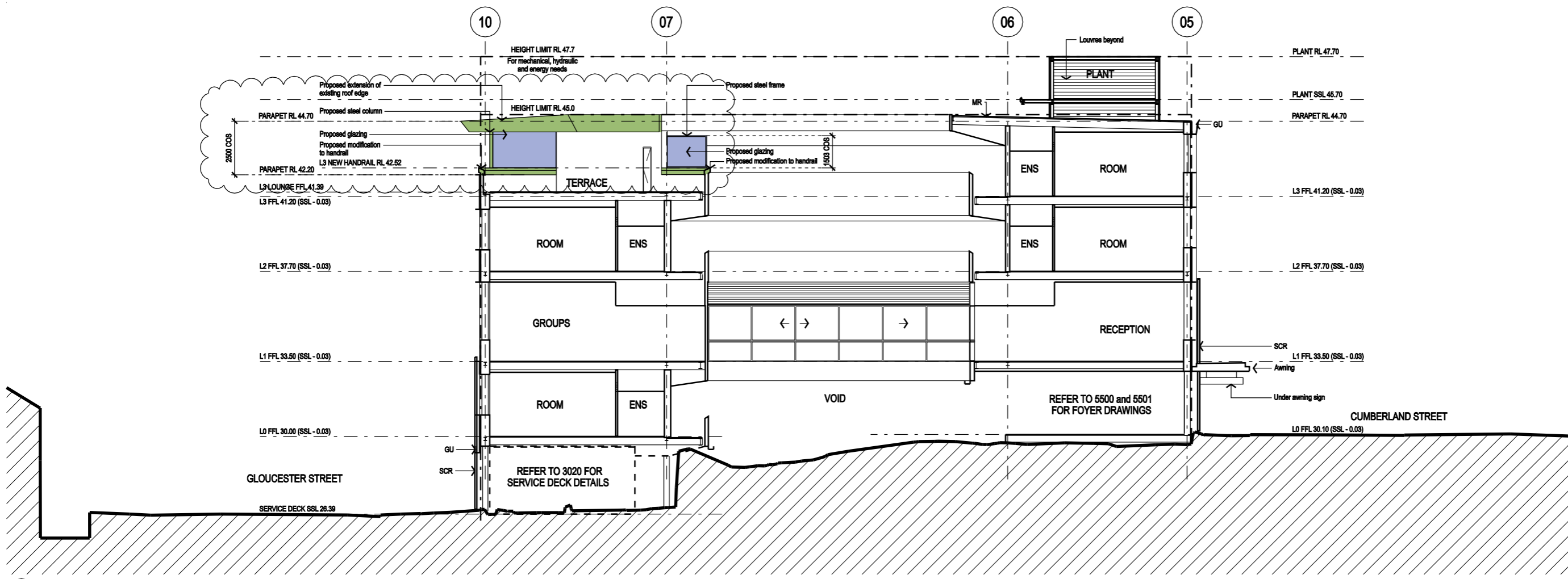
SYDNEY HARBOUR YHA

Cumberland Street
The Rocks NSW

North Wing - East & West Elevations

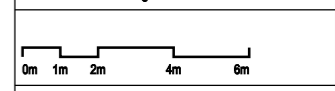
SCALE: DRAWN: CHECKED: DATE
1:100 @ A1 CMMAR - Feb 2007
1:200 @ A3

PROJECT	DRAWING	REVISION
06029	2001	A3



A Section A

NOTES
 Verify Dimensions on site prior to commencement of work. Check existing RL's on site. Advise Architect of any discrepancies before commencement. Allow for adjustments to suit discrepancies.
 Comply with relevant authorities requirements. Comply with Building Code of Australia requirements. Comply with relevant Australian Standards for materials and construction practice.
 Do not scale from drawings.



LEGEND

AL Aluminium	LM Laminate
AP Access Panel	LDY Laundry
BALC Balcony	LV Louvre
BL Bd Light	M Male toilet
DP Downpipe	MAS Masonry
DWR Drawer	MEM Membrane
CLR Clear	MR Metal roof
CT Ceramic Tile	MTL Metal
CTR Centre	MI Mirror
CH Clothes Hook	NOM Nominal
CON Concrete	OP Opaque glass
COB Confirm on site	PB Plasterboard
CP Control Panel (Air Con)	RC Reinforced Concrete
CPT Carpet	REM Remaining
EDB Electrical distribution board	RU Rubber Flooring
ESM Electrical Service	SCR Metal screen
EXH Exhaust	SD Stud
F Female toilet	SS Stainless Steel
FC Fibre cement	SSL Structural Steel Level
FCL Finished Ceiling Level	STL Steel
FD Floor distributor	TFD To Future Detail
FFL Finished Floor Level	TGSI Tactile Ground Surface Indicators
FHR Fire hose reel	TM Timber painted
FR Fridge	TMR To manufacturer's recommendations
FPB FYRCHERK plasterboard	UPS Urinal Privacy Screen
FXD GL Fixed Glass	USL Underside Steel Level
INS Insulation	WC Water closet
GL Glass	WS White board strip
GU Metal Gutter	
KS Key Swipe	

A1	North screen deleted	15.12.10
----	----------------------	----------

REV.	AMENDMENTS	DATE
SERVICES ENGINEER - Hydraulic, Electrical, Mechanical		
ITC Level 7 33 York St, Sydney NSW 2000 T 02 9485 8100 F 02 9485 8111		
STRUCTURAL ENGINEER Taylor Thomson Whitting Pty Ltd 48 Chandos Street St Leonards NSW 2085 T 02 9439 7288 F 02 9123 4567		
PLANNER Design Collaborative Level 4, 225 Clarence Street Sydney NSW 2000 T 02 9262 3200 F 02 9262 3601		
ARCHAEOLOGY / HERITAGE CONSULTANT Goddard Mackay Logan 78 George Street Redfern NSW 2016 T 02 9319 4811 F 02 9319 4383		
FIRE ENGINEER Fire Engineering Design PTY Ltd. PO Box 228 Balmain NSW 2041 T 02 9555 1928 F 02 9555 2427		
BCA CONSULTANT Steve Watson & Partners Level 5, 432 Kent Street, Sydney NSW 2000 T 02 9283 6555 F 02 9283 6500		
PROJECT MANAGER McNally Management Level 6, 47 York Street Sydney NSW 2000 T 02 9299 3800 F 02 9299 3980		
CLIENT YHA NSW 422 Kent Street, Sydney NSW 2000 T 02 8287 0405 F 02 9261 1969		

NOTE
 1: New columns are proposed to be installed above existing columns. Final locations will be confirmed through site measurements prior to installation.
 2: Heights of screens are proposed to align with existing roof profiles. Final heights will be confirmed through site measurements prior to installation.

Colour Key: Proposed Modifications

- Proposed roof sheeting
- Proposed glazing
- Proposed steelwork

Tzannes Associates ARCHITECTURE URBAN DESIGN
 63 Myrtle Street
 Chippendale NSW 2008
 Sydney Australia
 T +61 2 9379 3744
 F +61 2 9588 1170
 tzannes@tzannes.com.au

FOR CONSTRUCTION

SYDNEY HARBOUR YHA
 Cumberland Street
 The Rocks NSW

North Wing - Section A

SCALE 1:100 @ A1 1:200 @ A3	DRAWN CM/AR	CHECKED -	DATE Feb 2007
PROJECT 06029	DRAWING 3000	REVISION A1	