

LEGEND

PROPOSED STREETSCAPE PLANTING

- SWAMP MAHOGANY PAPERBARK FOREST
-bush palette with complementary street trees
- SWAMP MAHOGANY PAPERBARK FOREST
-urban palette with complementary street trees
- APPLE BLACKBUTT FOREST
-bush palette with complementary street trees
- APPLE BLACKBUTT FOREST
-urban palette with complementary street trees
- HEATH
-bush palette with complementary street trees
- HEATH
-urban palette with complementary street trees

NOTE: Streetscape planting will also apply to the Controlled Vegetation Zones (CVZ) within individual lots

EXISTING VEGETATION

- To be retained and managed to ecological principles and bushfire requirements
- SWAMP MAHOGANY PAPERBARK FOREST
- APPLE BLACKBUTT FOREST
- WET HEATH
- SWAMP SCLEROPHYLL FOREST
- POTENTIAL STORMWATER MANAGEMENT INFRASTRUCTURE
- PATHWAY

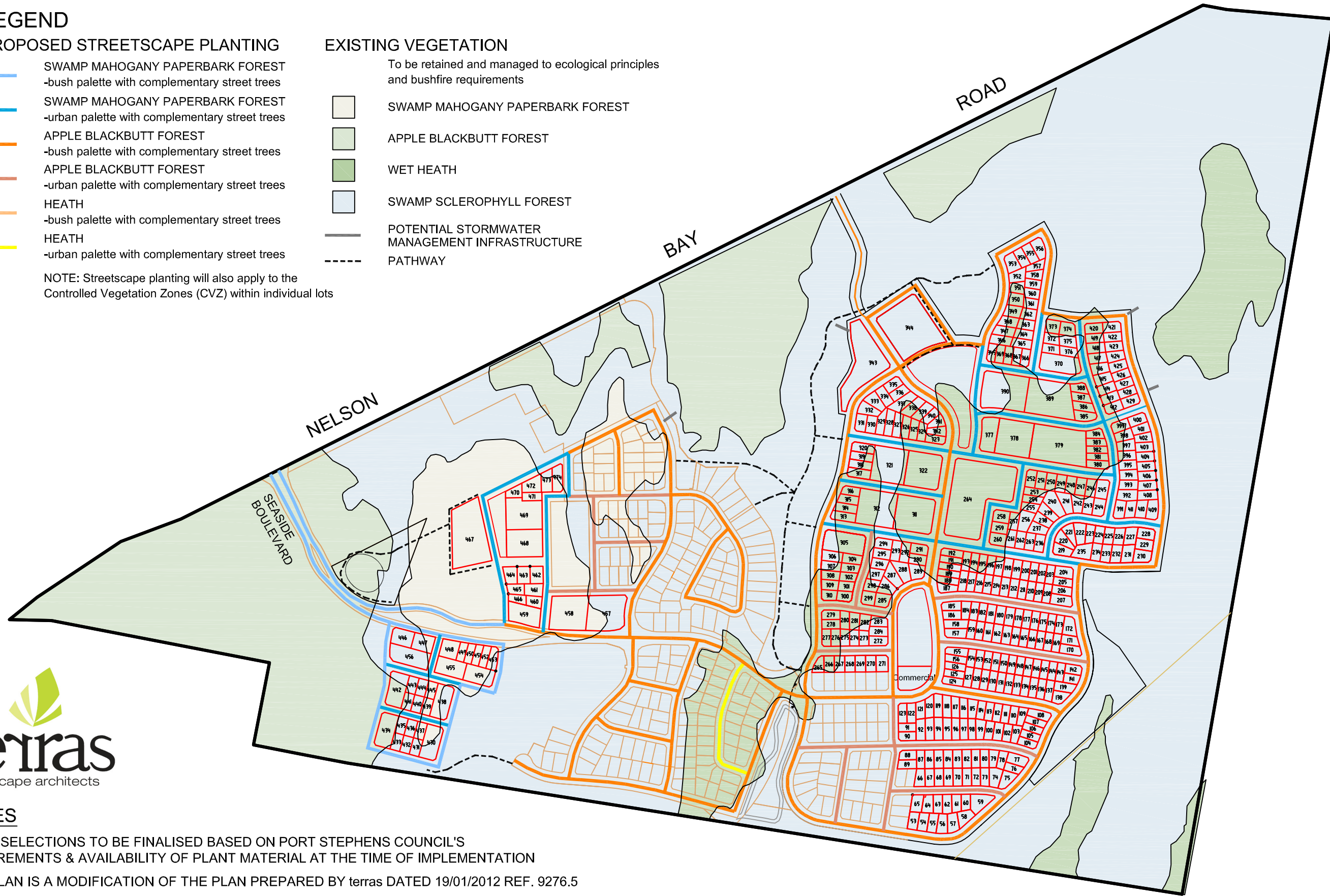


NOTES

PLANT SELECTIONS TO BE FINALISED BASED ON PORT STEPHENS COUNCIL'S REQUIREMENTS & AVAILABILITY OF PLANT MATERIAL AT THE TIME OF IMPLEMENTATION

THIS PLAN IS A MODIFICATION OF THE PLAN PREPARED BY terras DATED 19/01/2012 REF. 9276.5

THIS PLAN IS A MODIFICATION OF THE PLAN PREPARED BY ERM DATED 11/12/2009 REF. 0063154hv_PPP_05



MGA NORTH

A3

COPYRIGHT NOTICE
THE DRAWING & THE INTELLECTUAL PROPERTY CONTAINED HEREIN ALWAYS REMAINS THE PROPERTY OF **NORTH POINT SURVEYS (NSW) P/L** AND SHALL NOT BE COPIED OR REPRODUCED WITHOUT THE WRITTEN PERMISSION OF **NORTH POINT SURVEYS (NSW) P/L** AND SHALL BE USED ONLY BY THE CLIENT OF **NORTH POINT SURVEYS (NSW) P/L** FOR THE PROJECT FOR WHICH IT WAS PROVIDED.

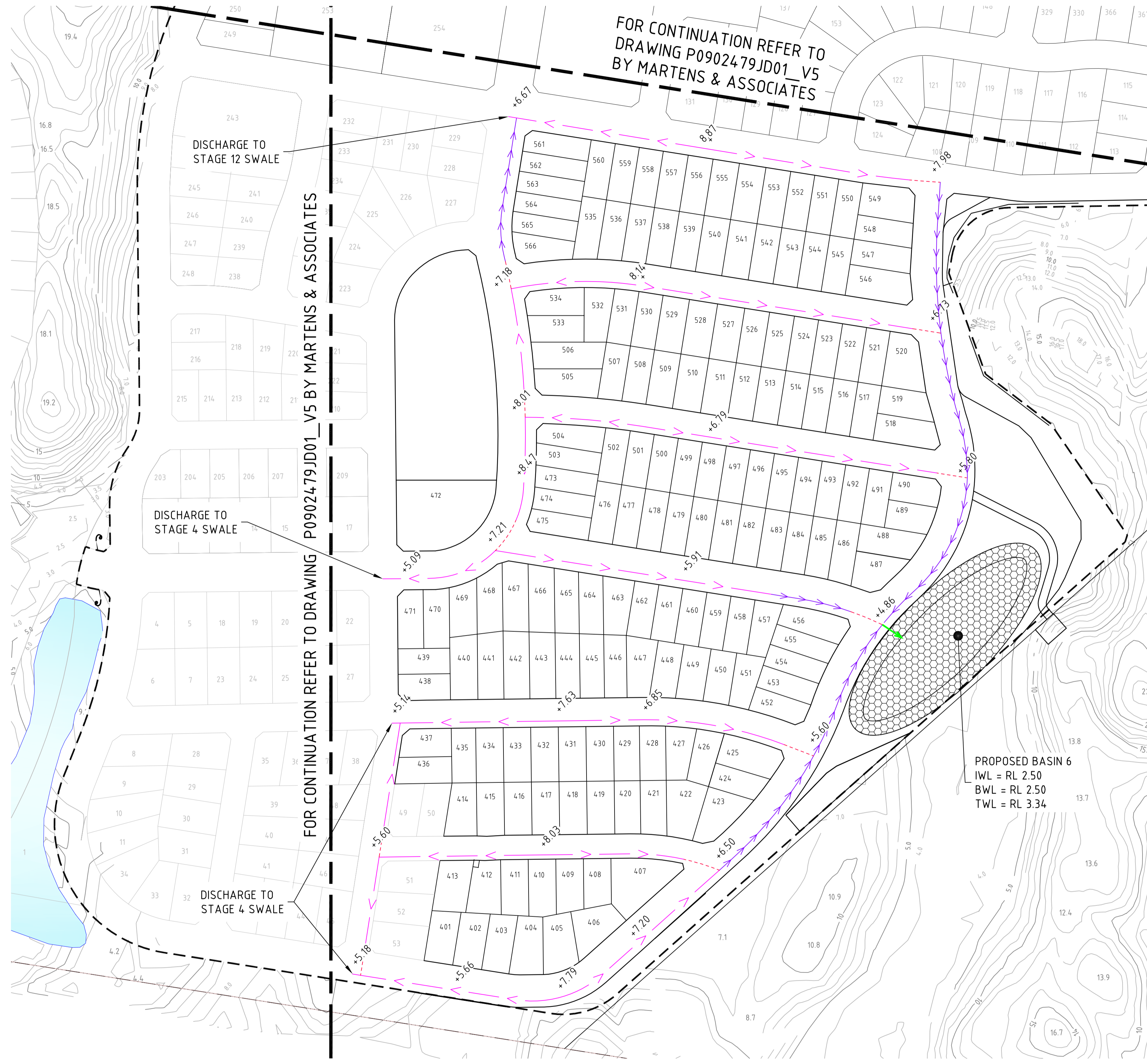
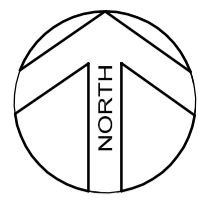
SCALE 1:7000	DATUM N/A
ISSUE DATE 19/01/2012	CONTOURS N/A
PLOT DATE 25/01/2012	DRAWN/CHKD BY IMc / AED
FILENAME X:\Data\29000-29999\29850\DRAWINGS\REV E\29850 LANDSCAPE PLAN.dwg	

DRAWING TITLE 29850 LANDSCAPE PLAN
PROPERTY DETAILS FERN BAY SEASIDE VILLAGE
CLIENT ASPEN



NORTH POINT SURVEYS (NSW) PTY LTD
ATF NORTH POINT SURVEYS TRUST ABN 52 041 968 075
SURVEYING AND LAND DEVELOPMENT CONSULTANTS
5 KOALA PLACE, ONE MILE BEACH
PH: 0249 842606
PO BOX 378 NELSON BAY, NSW, 2315
EMAIL: admin@northpointsurveys.com.au

29850 LANDSCAPE PLAN



- LEGEND**
- TYPE 1 GRASS SWALE (FLOW $0.2\text{m}^3/\text{s}$) (APPROXIMATE LOCATION ONLY)
 - TYPE 2 GRASS SWALE (FLOW $0.2\text{m}^3 \approx 0.8\text{m}^3/\text{s}$) (APPROXIMATE LOCATION ONLY)
 - TYPE 3 GRASS SWALE (FLOW > $0.8\text{m}^3/\text{s}$) (APPROXIMATE LOCATION ONLY)
 - PIPE SECTION
 - STAGE 4 ON-SITE STORMWATER DETENTION (OSD)
 - PROPOSED BASIN
 - INDICATIVE DESIGN LEVELS

NOTE:
INDICATIVE LEVELS, SWALE LOCATION AND SWALE TYPE SHOWN SUBJECT TO CONFIRMATION DURING DETAILED DESIGN.

FOR CONTINUATION REFER TO DRAWING P0902479JD01_V5 BY MARTENS & ASSOCIATES

FOR CONTINUATION REFER TO DRAWING P0902479JD01_V5 BY MARTENS & ASSOCIATES

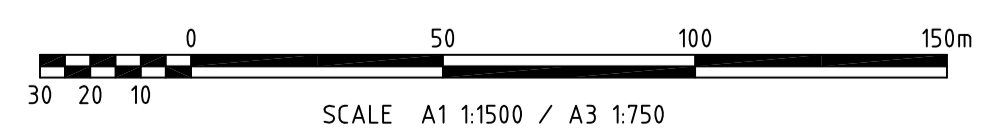
DISCHARGE TO STAGE 12 SWALE

DISCHARGE TO STAGE 4 SWALE

DISCHARGE TO STAGE 4 SWALE

PROPOSED BASIN 6
IWL = RL 2.50
BWL = RL 2.50
TWL = RL 3.34

PLAN
SCALE 1:1500



© Cardno (NSW/ACT) Pty Ltd 2011
All Rights Reserved.
This document is produced by Cardno (NSW/ACT) Pty Ltd solely for the benefit of and use by the client in accordance with the terms of the retainer. Cardno (NSW/ACT) Pty Ltd does not and shall not assume any responsibility or liability whatsoever to any third party arising out of any use or reliance by third party on the content of this document.

Cardno (NSW/ACT) Pty Ltd
ABN: 95 001 145 035
Suite 34, 207 Albany Street North, Gosford, NSW Australia 2250
Phone: +61 21 4323 2558 Fax: +61 21 4324 3251
Email: gosford@cardno.com.au Web: www.cardno.com.au



Drawn	AJS	Date	24/01/12
Checked	SGB	Date	24/01/12
Designed		Date	
Verified		Date	
Approved		Date	

Client	ASPEN GROUP
Project	PROPOSED RESIDENTIAL DEVELOPMENT SOUTH EAST PRECINCT FERN BAY, NSW
Concept	CONCEPT SITE DRAINAGE PLAN PROPOSED SWALES AND BASINS

Status	FOR APPROVAL			
	NOT TO BE USED FOR CONSTRUCTION PURPOSES			
Datum	A.H.D.	Register	Scale	Size
			1:1500	A1
Drawing Number	89023935-CSK2			Revision
				1

Rev	Date	ISSUE FOR APPROVAL	Description	Des.	Verif.	Appr.
1	24/01/2012	ISSUE FOR APPROVAL		AJS	SGB	