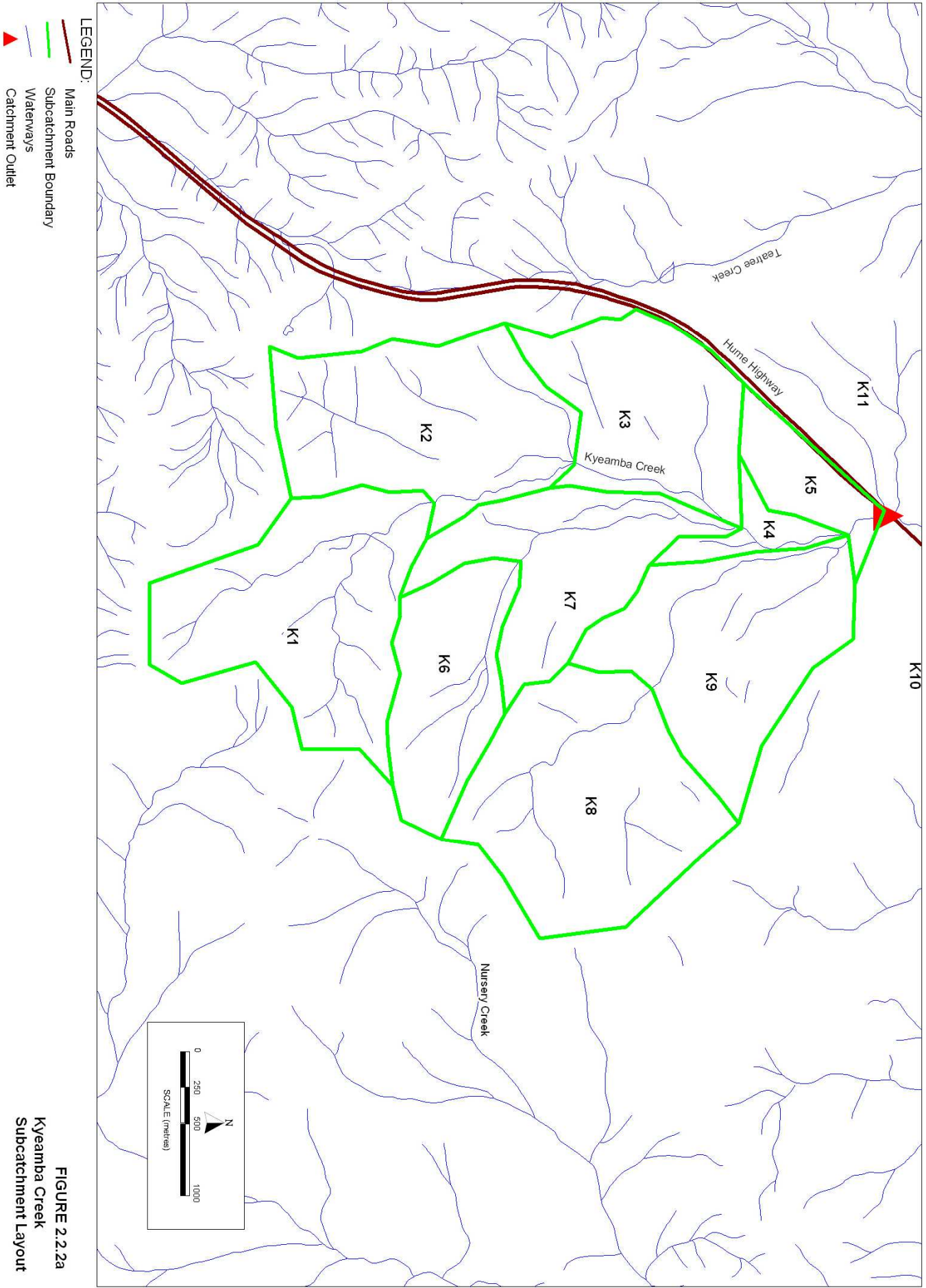


Relative Change in Flood Level  
1 in 100yr ARI Flood  
Eastern Option N1-8

Figure 2.2.1g



**FIGURE 2.2.2a**  
**Kyeamba Creek**  
**Subcatchment Layout**



LEGEND:




-  Main Roads
-  XS 100 Hec-Ras Cross Section
-  Waterways

FIGURE 2.2.2b

Kyeamba Creek  
Hec-Ras Cross Section Layout

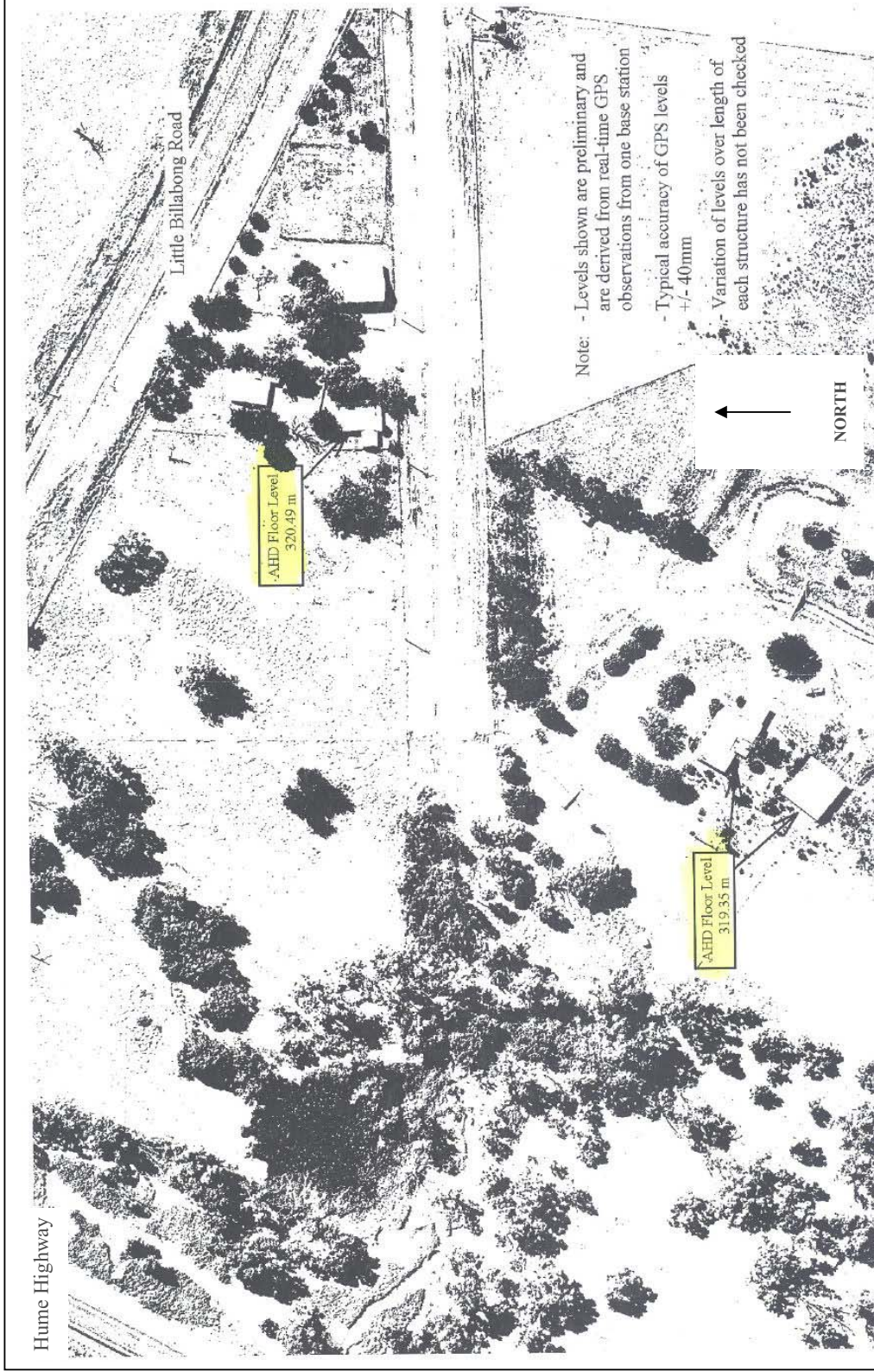
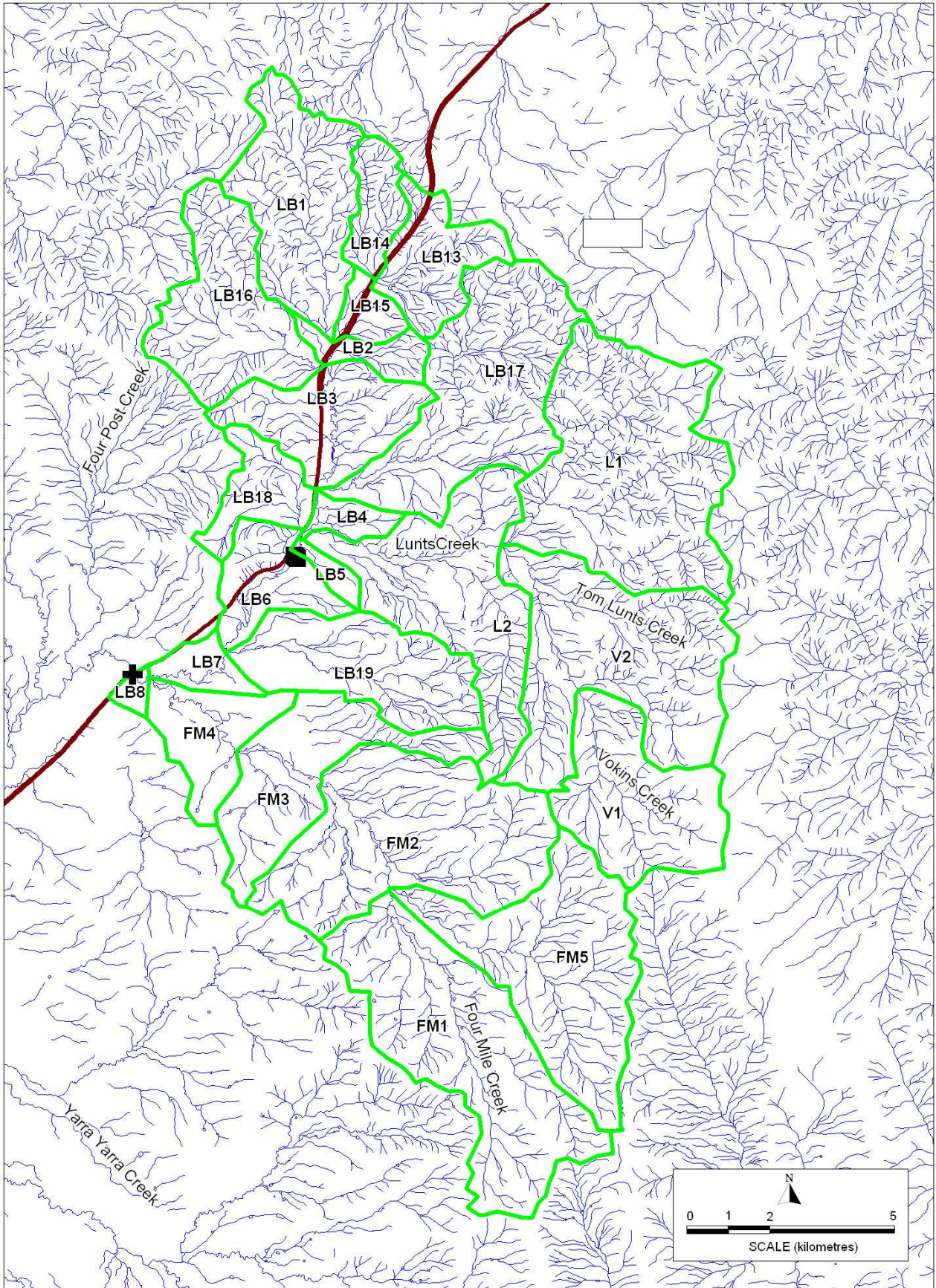


FIGURE 2.2.3a

House Floor Levels  
Little Billabong Road

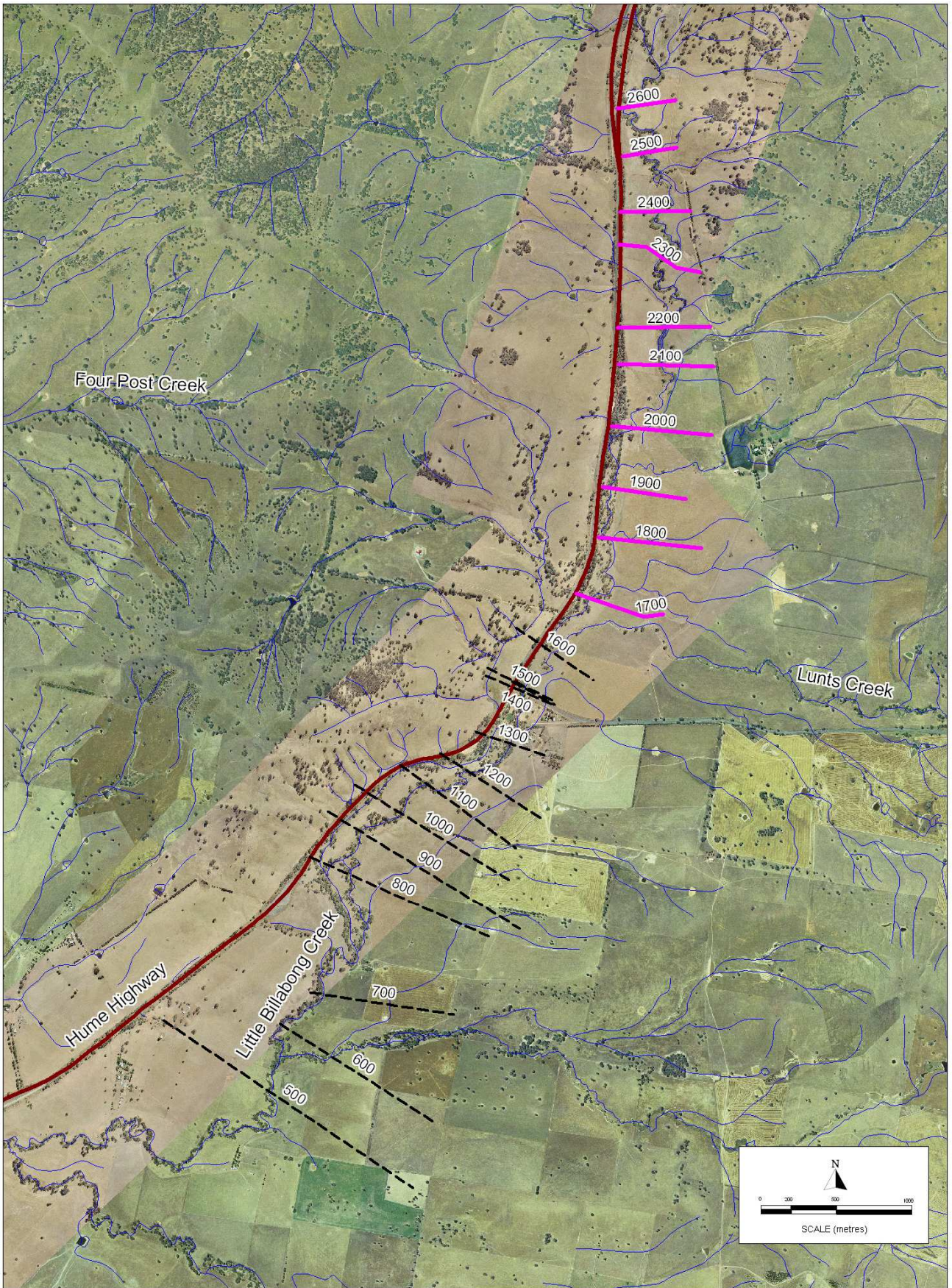
[Source: RTA survey]



LEGEND:

- Main Roads
- Subcatchment Boundary
- Waterways
- + Hume Highway Catchment
- Little Billabong Road Catchment

**FIGURE 2.2.3b**  
**Little Billabong Creek**  
**Subcatchment Layout**

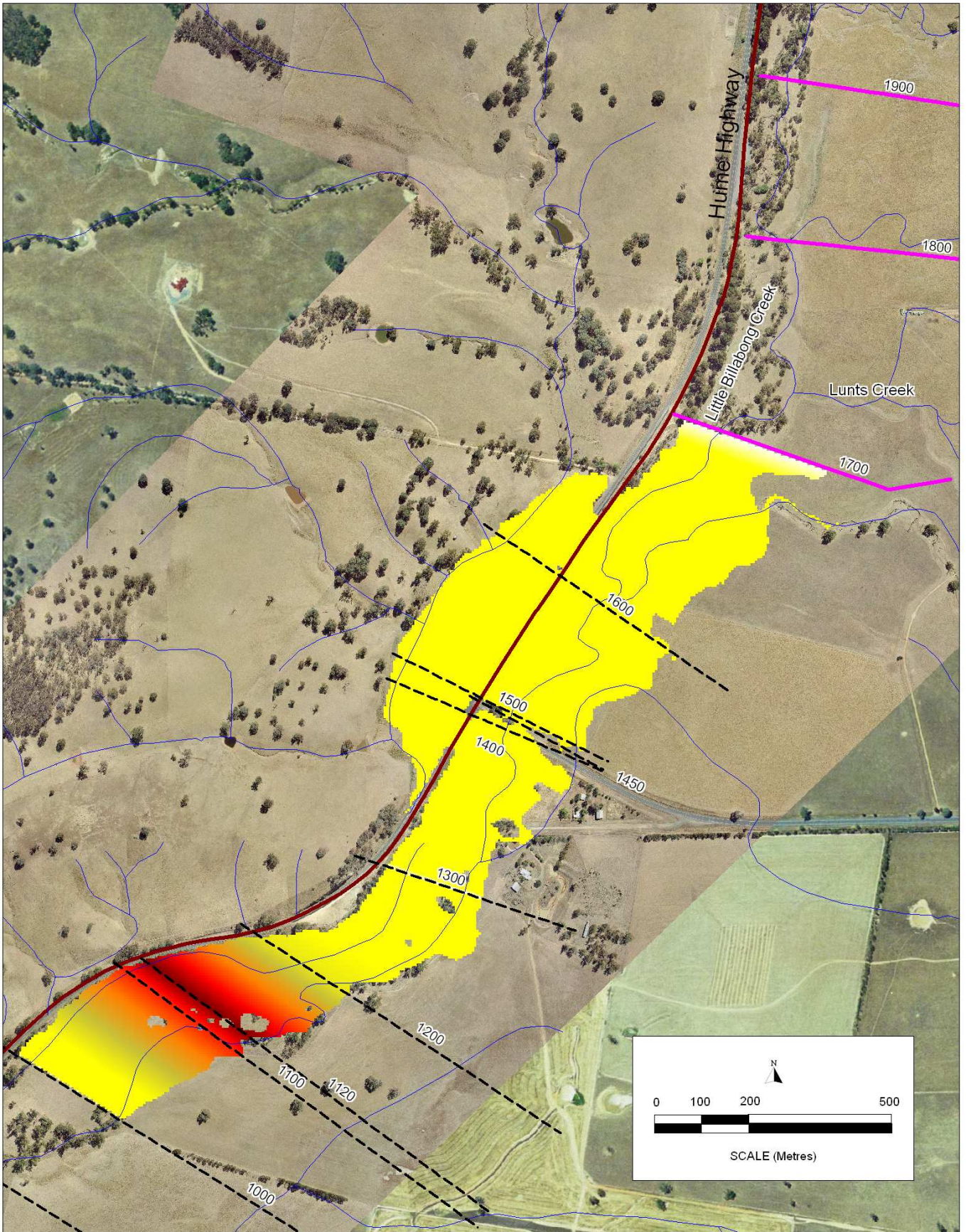


LEGEND:

-  Main Roads
-  Hec-Ras Cross Section
-  RTA Cross Section
-  Waterways

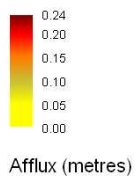
FIGURE 2.2.3c

Little Billabong Creek  
Hec-Ras Cross Section Layout



**LEGEND:**

-  Main Roads
-  Hec-Ras Cross Section
-  RTA Cross Section
-  Waterways



**FIGURE 2.2.3d**

**Little Billabong Creek  
Relative Impacts 100 yr ARI Event**