



15.473r02v01

traffix
traffic & transport planners

22 December 2016

Suite 2.08
50 Holt Street
Surry Hills NSW 2010
PO Box 1124
Strawberry Hills NSW 2012
t: +61 2 8324 8700
f: +61 2 9380 4481
w: www.traffix.com.au
director Graham Pindar
acn: 065132961
abn: 66065132961

Office of Sport NSW
6B Figtree Drive
Sydney Olympic Park NSW 2127

Attention: Peter Lee, Senior Project Manager

**Re: Regional Shooting Complex, Hill Top –
Traffic Count Survey Data 2015-2016 Comparison**

Dear Peter,

We refer to the proposed Southern Highlands Regional Shooting Complex located along Wattle Ridge Road, Hill Top. TRAFFIX has been commissioned to organise updated traffic count surveys at the same locations as previously surveyed in November 2015, in order to compare the two data sets.

Based on the updated (December 2016) and past (November 2015) traffic count survey data, we have assessed the results, and now advise as follows.

Background

TRAFFIX was commissioned by the Office of Sport in November 2015, to undertake a traffic impact assessment of the proposed Southern Highlands Regional Shooting Complex located along Wattle Ridge Road, Hill Top. As such, the information in this letter is complementary to the previous Traffic Impact Assessment (TIA) Report, December 2015 (Reference: 15.473r01v03).

The December 2015 TIA report includes results from the traffic count survey undertaken between 3rd & 9th November 2015. Four (4) counters/tubes were placed along the West Parade / Wattle Ridge Road corridor at the following locations. Also refer to **Figure 1**.

- Counter 1: West Parade, between Rosina Street and Vera Street.
- Counter 2: Wattle Ridge Road, about 300 metres northwest of Lyrebird Close.
- Counter 3: Wattle Ridge Road, about 2.75 kilometres northwest of Lyrebird Close and 500 metres northwest of The Westbreak.
- Counter 4: Wattle Ridge Road, about 1.3 kilometres from Counter 3.

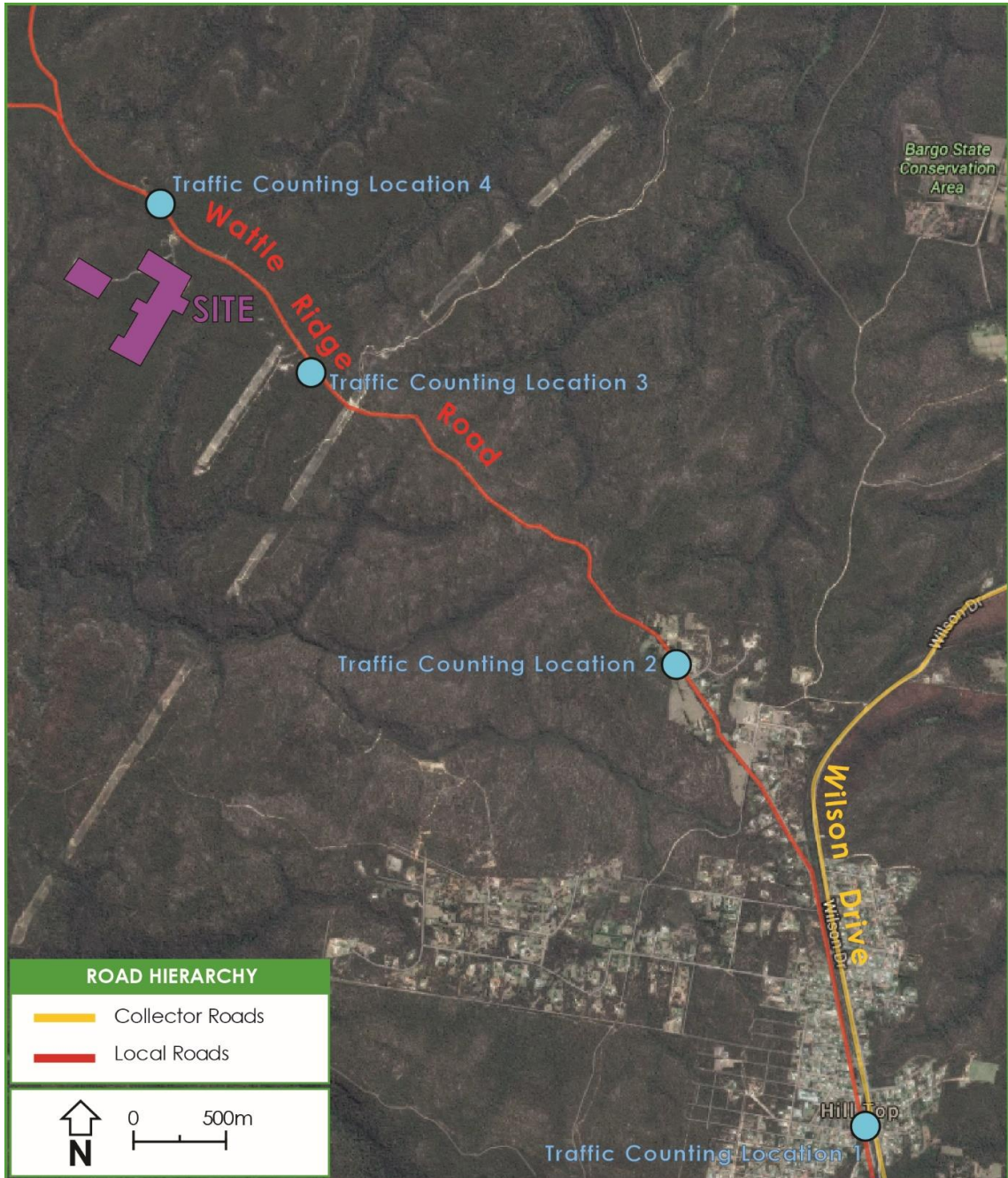


Figure 1: Traffic Counter/Tube Locations

➤ Traffic Count Survey Data – November 2015

The traffic volumes at the above locations collected over a week between 3rd & 9th November 2015, are summarised below in **Table 1**.



Table 1: Traffic Volume Summary – November 2015 Data Set

Counter	Weekday ADT (vpd)	Weekend ADT (vpd)	Weekly ADT (vpd)	Weekend Peak Hourly (vph)
1	2146	1657	2006	179
2	37	78	48	18
3	18	53	28	14
4	13	21	15	6

Traffic Count Survey Data – December 2016

The traffic volumes at the above locations collected over a week between 6th & 12th December 2016, are summarised below in **Table 2**:

Table 2: Traffic Volume Summary – December 2016 Data Set

Counter	Weekday ADT (vpd)	Weekend ADT (vpd)	Weekly ADT (vpd)	Weekend Peak Hourly (vph)
1	2322	1836	2183	198
2	31	77	44	15
3	13	62	27	14
4	9	22	12	9

Comparison of November 2015 vs December 2016 Traffic Count Survey Data

Based on the average daily traffic volumes from the two data sets, November 2015 and December 2016 traffic surveys, the volume changes as a comparison are tabulated below in **Table 3**:

Table 3: November 2015 vs. December 2016 Average Daily Volumes

Counter	Road	November 2015 Volumes (vpd)	December 2016 Volumes (vpd)	Volume Change (vpd)	Proposed Increase (vpd)	Future Volume (vpd)
1	West Parade	2006	2183	+177	40	2223
2	Wattle Ridge Road	48	44	-4	40	84
3	Wattle Ridge Road	28	27	-1	40	67
4	Wattle Ridge Road	15	12	-3	0	12

As discussed in December 2015 TIA, West Parade functions as a collector road (2,000 – 10,000 vpd) within the Hill Top town centre and Wattle Ridge Road functions as a local road (<2,000 vpd). This is based on the Austroads Functional Classification of Roads.

It is evident from **Table 3** that the future volumes along West Parade based on the new December 2016 data will still be within the 2,000 to 10,000 vehicles per day comparable with a collector road. The predicted traffic volumes along Wattle Ridge Road will also be well below the 2,000 vehicle per



day threshold classified for a local road. Accordingly, the existing road network in the area can easily accommodate additional traffic due to the proposed development.

As referenced from the RMS Guide to Traffic Generating Developments, the RMS formulated a design criteria for local and collector residential streets that take due account of amenity and safety considerations. These include an environmental goal and a maximum goal for a collector road as follows, in **Table 4**:

Table 4: RMS Environmental Goals

Road Class	Environmental Goal (veh/hr)	Maximum Volume (Veh/hr)
Collector Street	300	500
Local Street	200	300

As mentioned earlier, it is noted that West Parade functions as a collector road and Wattle Ridge Road as a local road. The peak hourly traffic volumes on weekends, along the road network is summarised in **Table 5**, below:

Table 5: November 2015 vs. December 2016 Hourly Volumes during Weekends

Counter	Road	November 2015 Volumes (vph)	December 2016 Volumes (vph)	Volume Change (vph)	Proposed Increase (vph)	Future Volume (vph)	Environmental Goal
1	West Parade	179	198	+19	16	214	Achieved
2	Wattle Ridge Road	18	15	-3	16	31	Achieved
3	Wattle Ridge Road	14	14	0	16	30	Achieved
4	Wattle Ridge Road	6	9	+3	0	9	Achieved

It is evident from **Table 5** above, that the future volumes along West Parade and Wattle Ridge Road, following the operation of the expanded Shooting Complex, will still meet the Environmental Goals in terms of desired traffic volumes as set by RMS for the collector and local roads.

As such, the residential amenity of West Parade and Wattle Ridge Road will not be adversely affected and the road will continue to operate with a local road function, with volumes that are commensurate with this function. As discussed in Section 6.2 of the December 2015 TIA, volumes from the northwest of the proposed site access will not be impacted.

Summary

Based on our assessment of the previous traffic count survey data in November 2015 and the new traffic count survey data in December 2016. The results reveal that there is negligible differences between the two data sets, particularly in regards to average daily volumes and hourly volumes during weekends on Wattle Ridge Road.

There is a slight increase of 177 vehicles per day in average daily volumes, equivalent to 9% increase; and an increase of 19 vehicles per hour in the hourly weekend volumes, equivalent to 11% increase



on West Parade. Regardless, West Parade functions as a collector road and these increases in volumes from the December 2016 data set in addition with calculated volumes based on the traffic generation of the proposed development, still results in volumes that are under the recommended Environmental Goal criteria for collector roads/streets.

It is therefore concluded that the proposed development is supportable on traffic planning grounds and will operate satisfactorily as the new traffic survey data collected in December 2016 do not pose significant changes to volumes.

Yours faithfully,

traffix

Khanh Nguyen
Traffic Engineer



Attachment 1

Traffic Count Survey Data (6th-12th December 2016)

Count Number 4457

Lat/Long : S34 18.464 / E150 27.001

GOOGLE MAP

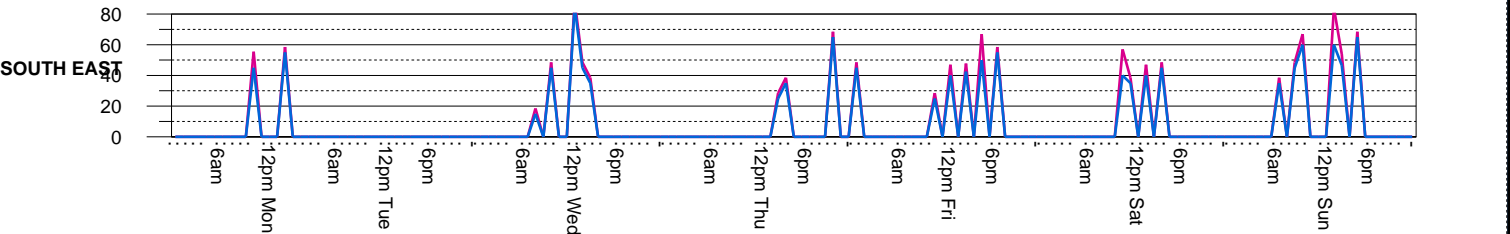
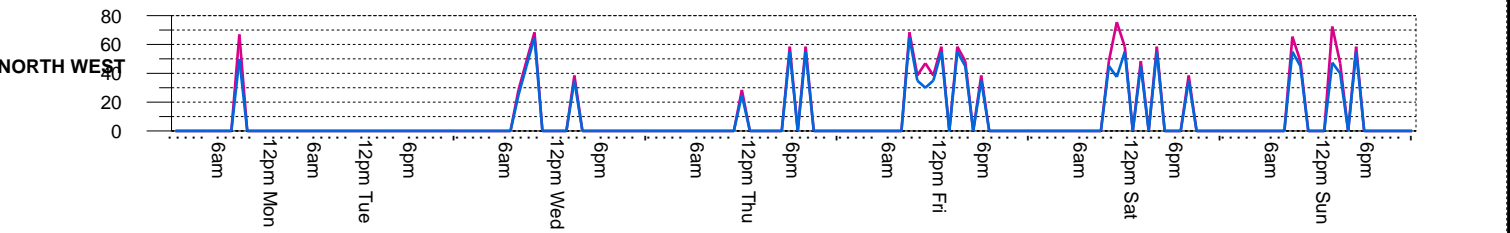
Street WATTLE RIDGE ROAD, HILL TOP : Between WEST PARADE & WATTLE RIDGE (bidirectional)

Location Count 4, about 1.5 Kms northwest of The Westbreak and about 1.3 KMS from Count 3, on tree.

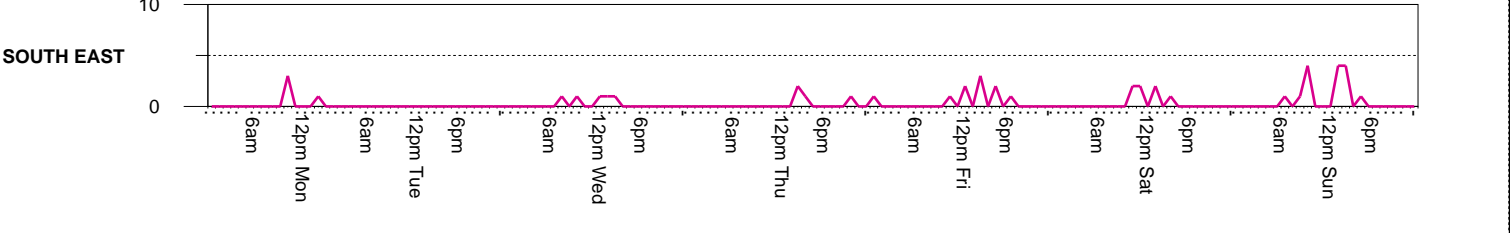
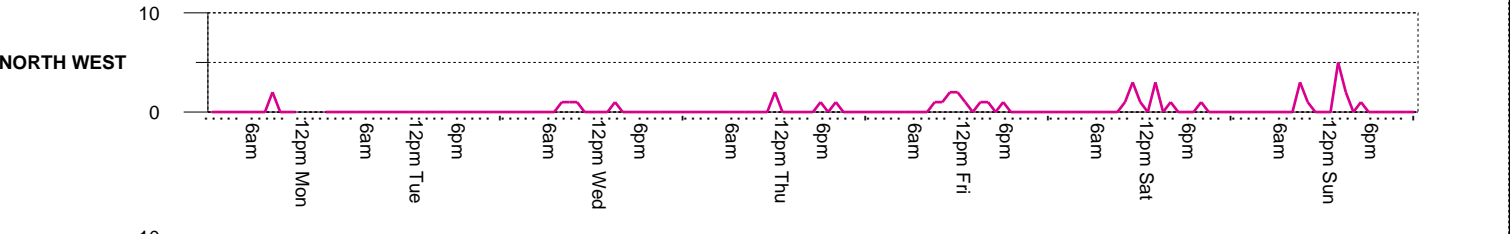
Start Date 06-DEC-16
 Start Time 100
 Duration 7 DAYS
 Interval 1 HOUR

Speed Limit 60 NORTH WEST SOUTH EAST COMBINED
 Weekly 50th Percentile Speed 45 46 46
 Weekly 85th Percentile Speed 61 62 62
 Five Day AADT 4 5 9
 Seven Day AADT 6 6 12

	MON 12-DEC-16			TUE 06-DEC-16			WED 07-DEC-16			THU 08-DEC-16			FRI 09-DEC-16			SAT 10-DEC-16			SUN 11-DEC-16			SEVENDAY AVERAGE		
	NORTH	SOUTH	BiDir	NORTH	SOUTH	BiDir	NORTH	SOUTH	BiDir	NORTH	SOUTH	BiDir	NORTH	SOUTH	BiDir	NORTH	SOUTH	BiDir	NORTH	SOUTH	BiDir	NORTH	SOUTH	BiDir
85%ile	67.0	57.0	61.0	.0	.0	.0	64.0	82.5	66.5	57.0	64.0	59.0	57.5	55.0	56.7	57.5	49.8	54.8	66.0	66.9	66.6	52.7	53.6	52.1
50%ile	50.0	50.0	50.0	.0	.0	.0	40.0	42.5	41.7	30.0	30.0	30.0	40.0	44.0	42.9	45.0	38.8	42.5	48.0	53.8	50.8	36.1	37.0	36.8
> 70 k	0	0	0	0	0	0	0	1	1	0	0	0	0	0	0	1	0	1	1	2	2	2857	2857	5714
> 80 k	0	0	0	0	0	0	0	19.1	10.5	0	0	0	0	0	0	9.8	0	5.7	8.2	6.6	7.3	2.6	3.7	3.4
%age	0	0	0	0	0	0	0	1	1	0	0	0	0	0	0	0	0	0	0	1	1	0	2857	2857
%age	0	0	0	0	0	0	0	19.1	10.5	0	0	0	0	0	0	0	0	0	6.6	3.6	3.6	0	3.7	2.0



	MON	TUE	WED	THU	FRI	SAT	SUN	Average																
Short %	50.0	75.0	66.7	.0	.0	.0	75.0	80.0	77.8	75.0	75.0	75.0	100.0	100.0	100.0	100.0	85.7	94.1	75.0	86.7	81.5	85.7	86.7	86.2
Med %	50.0	25.0	33.3	.0	.0	.0	25.0	20.0	22.2	25.0	25.0	25.0	.0	.0	.0	.0	14.3	5.9	25.0	6.7	14.8	14.3	11.1	12.6
Long %	0	0	0	0	0	0	0	0	0	0	0	0	0	0	0	0	0	0	0	6.7	3.7	0	2.2	1.1
AM Pk Vo	2	3	3	0	0	0	1	1	2	2	2	2	1	3	3	3	2	5	3	4	5	2	2	3
PM Pk Vo	2	1	1	0	0	0	1	1	2	2	2	1	3	4	3	2	5	5	4	9	2	2	3	
7-7pm 24Hr Tot	2	4	4	0	0	0	4	5	6	4	4	3	10	9	20	10	7	16	12	14	26	6	12	
Class 0	0	0	0	0	0	0	0	0	0	0	0	0	0	0	0	0	0	1	0	6	10	1	1	2
Class 1	1	3	4	0	0	0	3	4	7	3	3	9	10	19	8	6	14	5	6	11	4	5	9	
Class 2	0	0	0	0	0	0	0	0	0	0	0	1	1	1	1	0	0	0	0	1	1	4	5	
Class 3	1	1	2	0	0	0	1	1	0	1	1	0	0	0	0	0	0	0	1	1	2	1	1	
Class 4	0	0	0	0	0	0	0	0	0	0	0	0	0	0	0	0	0	0	0	0	0	0	0	
Class 5	0	0	0	0	0	0	0	0	0	0	0	0	0	0	0	0	0	0	0	0	0	0	0	
Class 6	0	0	0	0	0	0	0	0	0	0	0	0	0	0	0	0	0	0	0	0	0	0	0	
Class 7	0	0	0	0	0	0	0	0	0	0	0	0	0	0	0	0	0	0	0	0	0	0	0	
Class 8	0	0	0	0	0	0	0	0	0	0	0	0	0	0	0	0	0	0	0	0	0	0	0	
Class 9	0	0	0	0	0	0	0	0	0	0	0	0	0	0	0	0	0	0	0	0	0	0	0	
Class 10	0	0	0	0	0	0	0	0	0	0	0	0	0	0	0	0	0	0	0	0	0	0	0	
Class 11	0	0	0	0	0	0	0	0	0	0	0	0	0	0	0	0	0	0	0	0	0	0	0	
Class 12	0	0	0	0	0	0	0	0	0	0	0	0	0	0	0	0	0	0	0	0	0	0	0	
Class 13	0	0	0	0	0	0	0	0	0	0	0	0	0	0	0	0	0	0	0	0	0	0	0	



Count Number 4458

Lat/Long : S34 19.070 / E150 27.687

GOOGLE MAP

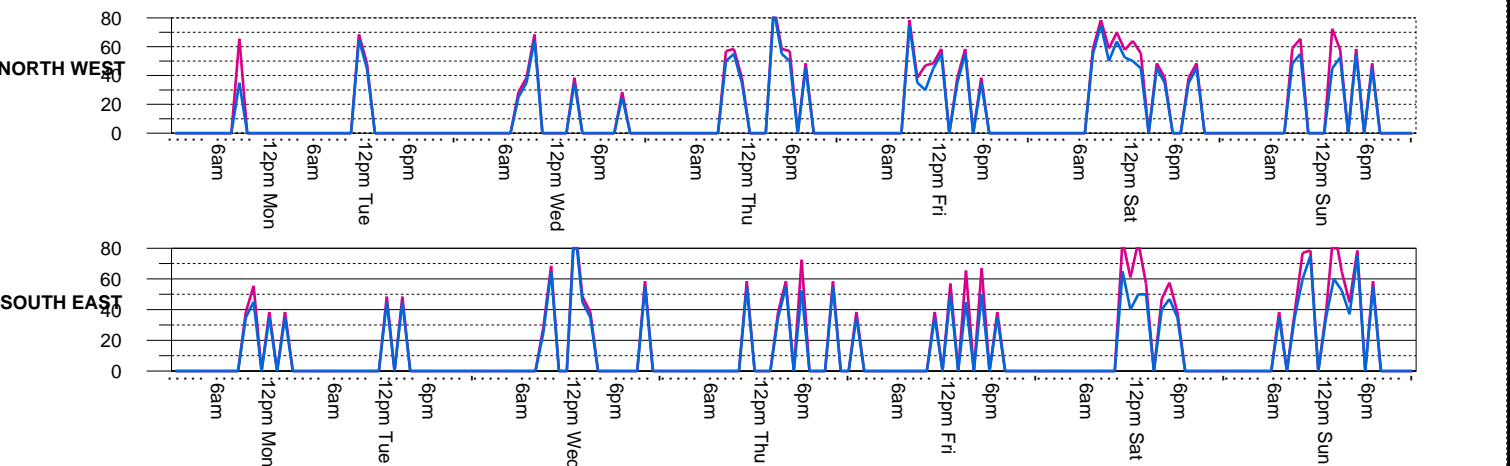
Street WATTLE RIDGE ROAD, HILL TOP : Between WEST PARADE & WATTLE RIDGE (bidirectional)

Location Count 3, about 2.75 Kms northwest of Lyrebird Close and 500 Mts northwest of The Westbreak, on tree.

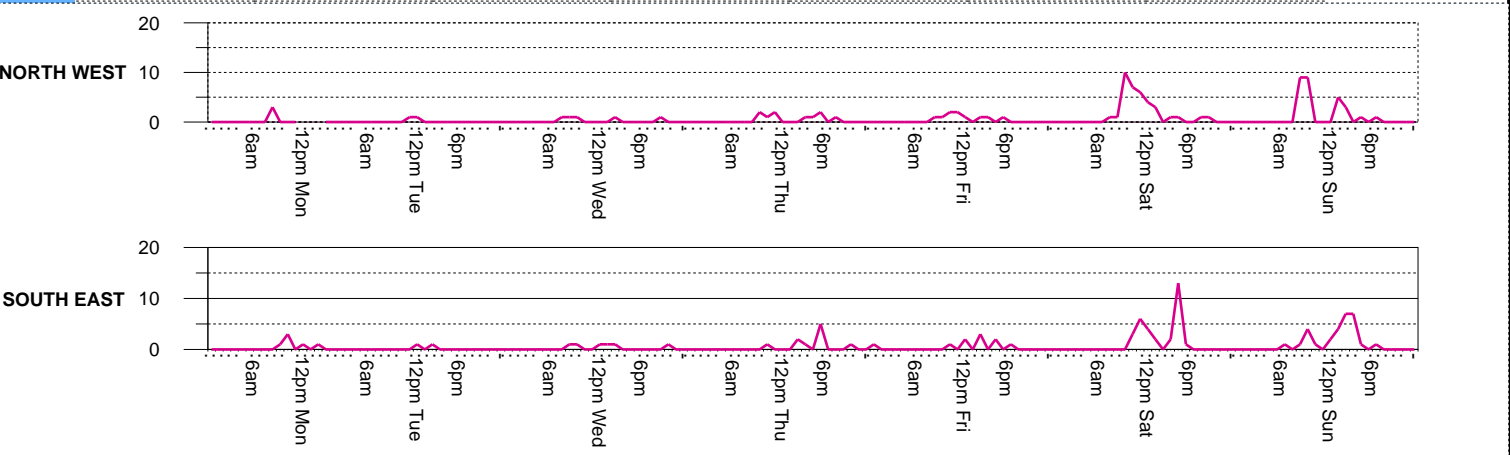
Start Date 06-DEC-16
 Start Time 100
 Duration 7 DAYS
 Interval 1 HOUR

Speed Limit	60	NORTH WEST	SOUTH EAST	COMBINED
Weekly 50th Percentile Speed		50	46	48
Weekly 85th Percentile Speed		63	65	64
Five Day AADT		6	7	13
Seven Day AADT		13	13	27

	MON 12-DEC-16			TUE 06-DEC-16			WED 07-DEC-16			THU 08-DEC-16			FRI 09-DEC-16			SAT 10-DEC-16			SUN 11-DEC-16			SEVENDAY AVERAGE		
	NORTH	SOUTH	BiDir	NORTH	SOUTH	BiDir	NORTH	SOUTH	BiDir	NORTH	SOUTH	BiDir	NORTH	SOUTH	BiDir	NORTH	SOUTH	BiDir	NORTH	SOUTH	BiDir	NORTH	SOUTH	BiDir
85%ile	65.5	51.0	56.5	67.0	48.5	64.0	62.5	91.0	66.8	58.8	59.0	58.9	57.5	62.5	60.0	64.3	63.4	64.0	62.0	73.3	67.4	62.5	64.1	62.5
50%ile	35.0	36.7	36.3	50.0	45.0	46.7	32.5	50.0	38.3	50.0	52.0	51.1	43.3	43.3	43.3	52.3	46.5	49.8	51.0	47.0	49.6	44.9	45.8	45.0
> 70 k	0	0	0	0	0	0	0	1	1	1	1	2	1	0	1	2	2	2	1	6	7	7143	1429	2143
%age	.0	.0	.0	.0	.0	.0	.0	16.0	8.7	9.8	9.8	9.8	.0	4.9	5.5	6.4	5.9	3.5	20.5	12.2	4.1	7.5		
> 80 k	0	0	0	0	0	0	0	1	1	1	0	1	0	0	0	0	2	2	0	1	1	1429	5714	7143
%age	.0	.0	.0	.0	.0	.0	.0	16.0	8.7	9.8	.0	4.9	.0	.0	.0	6.4	3.0	.0	3.4	1.7	1.4	3.7		



Short %	66.7	83.3	77.8	50.0	50.0	50.0	80.0	83.3	81.8	90.0	90.0	90.0	90.0	100.0	95.0	94.4	93.5	94.0	89.3	82.8	86.0	89.4	88.3	88.8
Med %	33.3	16.7	22.2	50.0	50.0	50.0	20.0	16.7	18.2	10.0	10.0	10.0	10.0	0.0	5.0	5.6	6.5	6.0	10.7	13.8	12.3	9.6	10.6	10.1
Long %	.0	.0	.0	.0	.0	.0	.0	.0	.0	.0	.0	.0	.0	.0	.0	.0	.0	.0	.0	.0	.0	.0	.0	.0
AM Pk Vo	3	3	3	1	1	1	1	1	2	2	2	2	2	1	3	10	6	12	9	4	13	4	2	5
PM Pk Vo	3	1	1	1	1	2	1	1	2	5	7	1	3	4	4	13	14	14	5	7	10	2	4	6
7-7pm 24Hr Tot	3	6	9	2	2	4	4	5	6	9	9	18	10	9	19	34	31	65	28	28	56	13	13	26
Class 0	0	0	0	0	0	0	0	0	0	1	1	0	0	0	0	2	1	3	8	6	14	2	1	3
Class 1	2	5	7	1	1	4	4	5	5	8	8	19	9	10	19	31	28	59	17	17	34	10	11	21
Class 2	0	0	0	0	0	0	0	0	0	0	0	0	0	0	0	1	0	1	1	1	1	0	0	1
Class 3	1	1	2	0	0	0	0	0	0	1	1	0	0	0	0	2	2	4	3	4	7	1	1	2
Class 4	0	0	0	0	0	0	0	0	0	0	0	0	0	0	0	0	0	0	0	0	0	0	0	0
Class 5	0	0	0	0	0	0	0	0	0	0	0	0	0	0	0	0	0	0	0	0	0	0	0	0
Class 6	0	0	0	0	0	0	0	0	0	0	0	0	0	0	0	0	0	0	0	0	0	0	0	0
Class 7	0	0	0	0	0	0	0	0	0	0	0	0	0	0	0	0	0	0	0	0	0	0	0	0
Class 8	0	0	0	0	0	0	0	0	0	0	0	0	0	0	0	0	0	0	0	0	0	0	0	0
Class 9	0	0	0	0	0	0	0	0	0	0	0	0	0	0	0	0	0	0	0	0	0	0	0	0
Class 10	0	0	0	0	0	0	0	0	0	0	0	0	0	0	0	0	0	0	0	0	0	0	0	0
Class 11	0	0	0	0	0	0	0	0	0	0	0	0	0	0	0	0	0	0	0	0	0	0	0	0
Class 12	0	0	0	0	0	0	0	0	0	0	0	0	0	0	0	0	0	0	0	0	0	0	0	0
Class 13	0	0	0	0	0	0	0	0	0	0	0	0	0	0	0	0	0	0	0	0	0	0	0	0



Count Number 4459

Lat/Long : S34 19.870 / E150 28.951

GOOGLE MAP

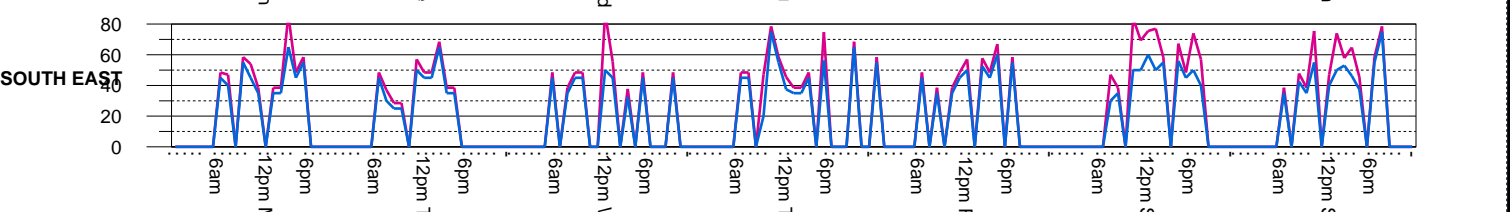
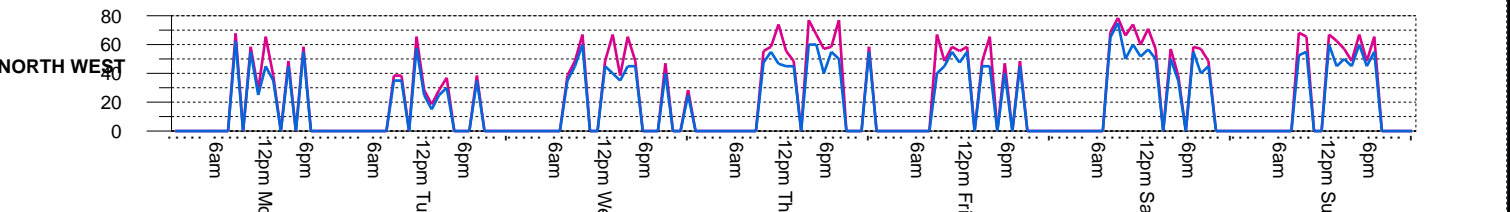
Street WATTLE RIDGE ROAD, HILL TOP : Between WEST PARADE & WATTLE RIDGE (bidirectional)

Location Count 2, about 300 Mtrs northwest of Lyrebird Close. ELP 824428

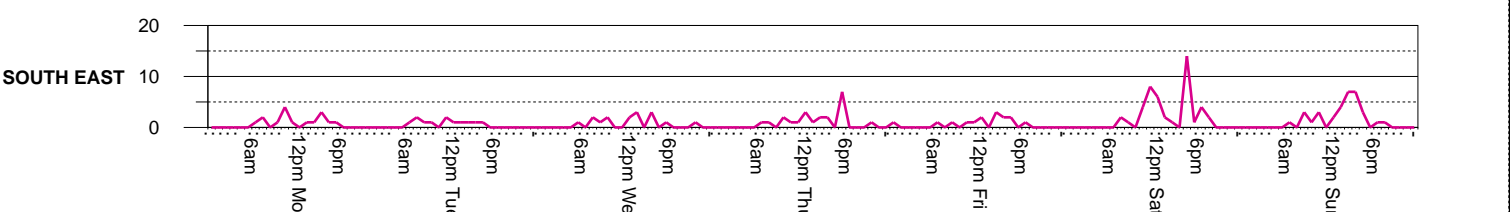
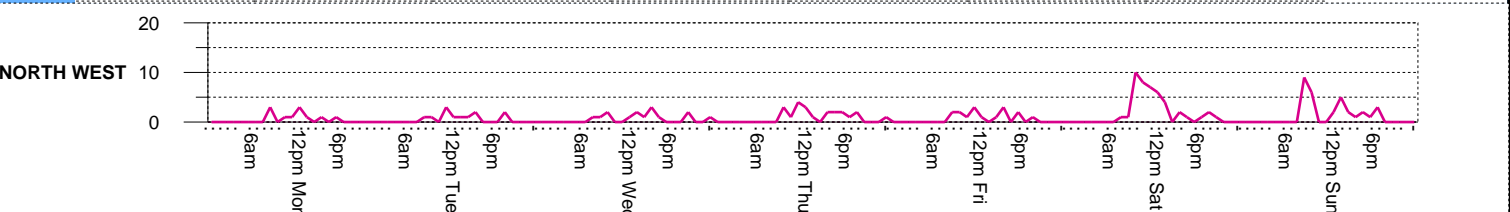
Start Date 06-DEC-16
 Start Time 100
 Duration 7 DAYS
 Interval 1 HOUR

Speed Limit	60	NORTH WEST	SOUTH EAST	COMBINED
Weekly 50th Percentile Speed		49	47	48
Weekly 85th Percentile Speed		65	64	65
Five Day AADT		15	16	31
Seven Day AADT		22	23	44

	MON 12-DEC-16			TUE 06-DEC-16			WED 07-DEC-16			THU 08-DEC-16			FRI 09-DEC-16			SAT 10-DEC-16			SUN 11-DEC-16			SEVENDAY AVERAGE		
	NORTH	SOUTH	BiDir	NORTH	SOUTH	BiDir	NORTH	SOUTH	BiDir	NORTH	SOUTH	BiDir	NORTH	SOUTH	BiDir	NORTH	SOUTH	BiDir	NORTH	SOUTH	BiDir	NORTH	SOUTH	BiDir
85%ile	64.5	58.7	62.4	56.0	52.0	54.7	62.5	49.5	56.8	67.0	67.0	67.0	58.7	57.9	58.2	67.1	71.8	69.2	65.4	60.3	64.4	63.0	59.6	61.8
50%ile	48.3	44.0	45.6	34.0	40.0	36.3	43.0	42.5	42.7	51.3	46.7	49.3	46.3	49.0	47.3	53.1	52.8	53.0	52.8	46.8	49.4	47.0	46.0	46.2
> 70 k	0	1	1	0	0	0	0	0	1	1	3	3	6	0	0	4	8	12	1	3	4	1.143	2.286	3.429
%age	0	6.2	3.6	0	0	0	0	0	6.2	3.2	13.5	13.5	13.5	0	0	9.0	17.7	13.4	3.2	9.0	6.2	3.7	7.5	5.7
> 80 k	0	1	1	0	0	0	0	0	1	1	0	0	0	0	0	0	1	1	0	0	0	0	0	0
%age	0	6.2	3.6	0	0	0	0	0	6.2	3.2	0	0	0	0	0	0	2.2	1.1	0	0	0	0	0	0



	MON	TUE	WED	THU	FRI	SAT	SUN	Average																
Short %	72.7	75.0	74.1	75.0	83.3	79.2	80.0	81.3	80.6	86.4	81.8	84.1	87.5	86.7	87.1	95.5	91.1	93.3	87.1	84.8	85.9	86.8	84.9	85.8
Med %	27.3	25.0	25.9	16.7	16.7	16.7	20.0	18.8	19.4	13.6	18.2	15.9	12.5	13.3	12.9	4.5	8.9	6.7	12.9	12.1	12.6	12.5	14.5	13.5
Long %	0	0	0	8.3	0	4.2	0	0	0	0	0	0	0	0	0	0	0	0	0	3.0	0	0	0	0
AM Pk Vo	3	4	5	3	2	5	2	2	4	4	2	5	3	1	4	10	8	15	9	3	12	5	3	7
PM Pk Vo	3	3	4	2	1	3	3	3	6	3	7	9	3	3	5	6	14	15	5	7	9	4	5	7
7-7pm 24Hr Tot	11	15	26	10	11	21	12	14	26	19	20	39	15	13	28	41	43	84	31	31	62	20	21	41
Class 0	1	1	2	1	1	2	1	1	2	2	2	4	1	1	2	1	2	3	5	4	9	2	2	3
Class 1	7	11	18	8	8	16	11	12	23	17	16	33	12	12	24	40	39	79	22	23	45	17	17	34
Class 2	0	0	0	0	1	1	0	0	0	0	0	1	1	1	1	1	0	0	1	1	1	1	1	1
Class 3	3	4	7	1	0	2	2	2	4	3	4	2	2	2	4	2	4	6	4	4	8	2	3	5
Class 4	0	0	0	0	0	0	0	0	0	0	0	0	0	0	0	0	0	0	0	0	0	0	0	0
Class 5	0	0	0	0	0	0	0	0	0	0	0	0	0	0	0	0	0	0	0	0	0	0	0	0
Class 6	0	0	0	0	0	0	0	0	0	0	0	0	0	0	0	0	0	0	0	0	0	0	0	0
Class 7	0	0	0	0	0	0	0	0	0	0	0	0	0	0	0	0	0	0	0	0	0	0	0	0
Class 8	0	0	0	0	0	0	0	0	0	0	0	0	0	0	0	0	0	0	0	0	0	0	0	0
Class 9	0	0	0	0	0	0	0	0	0	0	0	0	0	0	0	0	0	0	0	0	0	0	0	0
Class 10	0	0	0	0	0	0	0	0	0	0	0	0	0	0	0	0	0	0	0	0	0	0	0	0
Class 11	0	0	0	0	0	0	0	0	0	0	0	0	0	0	0	0	0	0	0	0	0	0	0	0
Class 12	0	0	0	0	0	0	0	0	0	0	0	0	0	0	0	0	0	0	0	0	0	0	0	0
Class 13	0	0	0	0	0	0	0	0	0	0	0	0	0	0	0	0	0	0	0	0	0	0	0	0



Count Number 4460

Lat/Long : S34 21.361 / E150 29.676

GOOGLE MAP

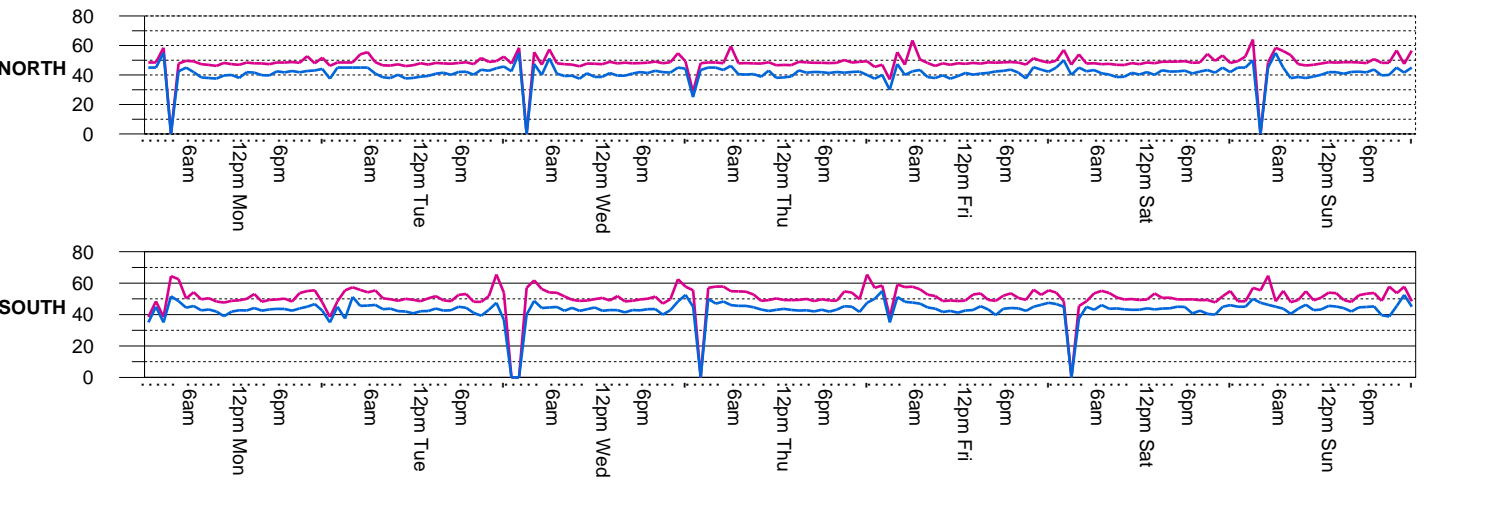
Street WEST PARADE, HILL TOP : Between ROSINA STREET & WATTLE RIDGE ROAD (bidirectional)

Location Count 1, between Rosina Street and Vera Street ELP 65 - 3V0150 on 50km/h sign pole.

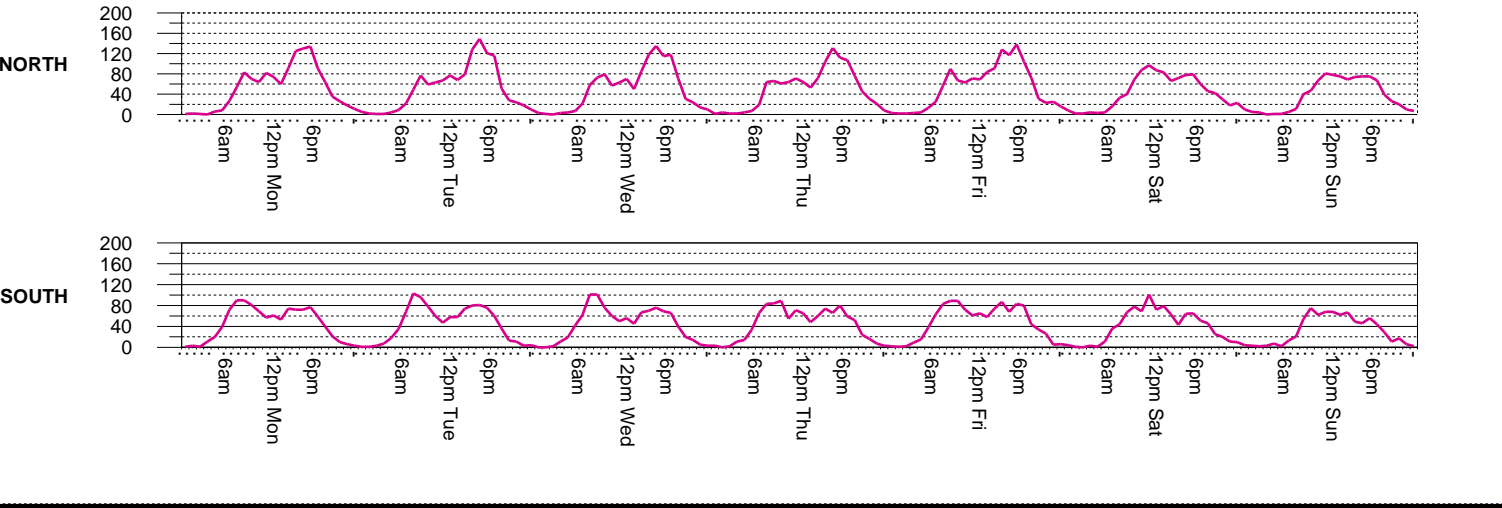
Start Date 06-DEC-16
 Start Time 100
 Duration 7 DAYS
 Interval 1 HOUR

Speed Limit 50 NORTH SOUTH COMBINED
 Weekly 50th Percentile Speed 41 44 42
 Weekly 85th Percentile Speed 48 51 49
 Five Day AADT 1237 1086 2322
 Seven Day AADT 1160 1023 2183

	MON 12-DEC-16			TUE 06-DEC-16			WED 07-DEC-16			THU 08-DEC-16			FRI 09-DEC-16			SAT 10-DEC-16			SUN 11-DEC-16			SEVENDAY AVERAGE		
	NORTH	SOUTH	BiDir	NORTH	SOUTH	BiDir	NORTH	SOUTH	BiDir	NORTH	SOUTH	BiDir	NORTH	SOUTH	BiDir	NORTH	SOUTH	BiDir	NORTH	SOUTH	BiDir	NORTH	SOUTH	BiDir
85%ile	48.0	49.8	48.9	47.9	50.3	48.9	48.1	49.9	49.0	48.2	50.6	49.2	48.3	51.8	49.4	48.5	50.0	49.3	48.6	51.8	49.6	48.2	50.6	49.2
50%ile	40.7	43.1	41.9	40.6	43.3	41.9	40.6	43.3	42.0	41.3	43.7	42.5	41.3	43.7	42.4	41.6	43.7	42.6	41.3	44.3	42.8	41.1	43.6	42.3
> 60 k	3	12	15	1	8	9	0	11	11	5	11	16	5	16	21	4	9	13	4	8	12	3.143	10.71	13.86
%age	.2	1.1	.6	.1	.7	.4	.0	1.0	.5	.4	1.4	.9	.4	1.4	.9	.4	.6	.5	1.0	.7	.3	1.0	.6	
> 70 k	0	0	0	1	0	1	0	0	0	3	1	4	0	0	0	0	0	0	0	0	0	5714	1429	7143
%age	.0	.0	.0	.1	.0	.0	.0	.0	.0	.3	.1	.2	.0	.0	.0	.0	.0	.0	.0	.0	.0	.0	.0	.0



	MON	TUE	WED	THU	FRI	SAT	SUN	SEVENDAY AVERAGE																
Short %	94.7	93.4	94.1	94.8	93.1	94.0	94.3	92.3	93.4	94.6	92.8	93.8	94.2	93.5	93.9	98.1	95.9	97.0	98.6	97.5	98.1	95.4	93.9	94.7
Med %	4.9	5.9	5.3	4.8	6.4	5.6	5.4	7.4	6.3	4.7	6.3	5.5	5.2	5.6	5.4	1.8	3.7	2.7	1.2	2.3	1.7	4.2	5.5	4.8
Long %	.5	.6	.6	.4	.5	.4	.3	.3	.3	.7	.9	.8	.6	.9	.7	.1	.4	.2	.1	.1	.1	.4	.6	.5
AM Pk Vo	83	90	173	77	103	173	79	101	174	71	89	150	90	89	179	97	101	198	81	75	149	83	93	171
PM Pk Vo	134	77	211	149	81	230	135	76	211	131	80	197	138	87	221	87	79	162	78	68	146	122	78	197
7-7pm 24Hr Tot	1058	855	1913	1053	871	1924	1021	837	1858	969	834	1803	1079	909	1988	852	796	1648	759	672	1431	970	825	1795
	1257	1082	2339	1228	1071	2299	1211	1055	2266	1190	1066	2256	1298	1154	2452	1050	964	2014	887	771	1658	1160	1023	2183
Class 0	9	10	19	6	5	11	13	11	24	10	6	16	19	16	35	14	16	30	8	17	25	11	12	23
Class 1	1161	990	2151	1142	972	2114	1116	950	2066	1099	968	2067	1184	1049	2233	986	883	1869	853	724	1577	1077	934	2011
Class 2	20	11	31	16	20	36	13	13	26	17	15	32	20	14	34	30	25	55	14	11	25	19	16	34
Class 3	50	58	108	47	63	110	56	70	126	47	60	107	54	55	109	15	35	50	11	17	28	40	51	91
Class 4	9	5	14	9	9	14	7	8	15	7	6	13	11	8	19	4	1	5	0	0	0	7	5	11
Class 5	2	1	3	3	1	2	0	0	2	2	1	2	2	2	4	0	0	0	0	1	1	2	1	2
Class 6	3	4	7	3	3	4	0	0	1	1	0	1	1	1	1	1	1	1	0	0	0	1	1	3
Class 7	2	1	3	1	1	2	0	2	0	1	1	1	1	1	2	1	2	1	1	1	1	1	1	2
Class 8	0	1	1	0	0	1	1	0	1	8	15	5	11	11	3	0	0	0	0	0	0	2	2	4
Class 9	0	0	0	1	0	2	1	0	1	1	1	1	1	2	3	0	1	1	0	0	0	1	1	1
Class 10	1	1	2	0	0	0	0	0	0	0	0	0	0	0	0	0	0	0	0	0	0	0	0	0
Class 11	0	0	0	0	0	0	0	0	0	0	0	0	0	0	0	0	0	0	0	0	0	0	0	0
Class 12	0	0	0	0	0	0	0	0	0	0	0	0	0	0	0	0	0	0	0	0	0	0	0	0
Class 13	0	0	0	0	0	0	0	0	0	0	0	0	0	0	0	0	0	0	0	0	0	0	0	0





Attachment 2

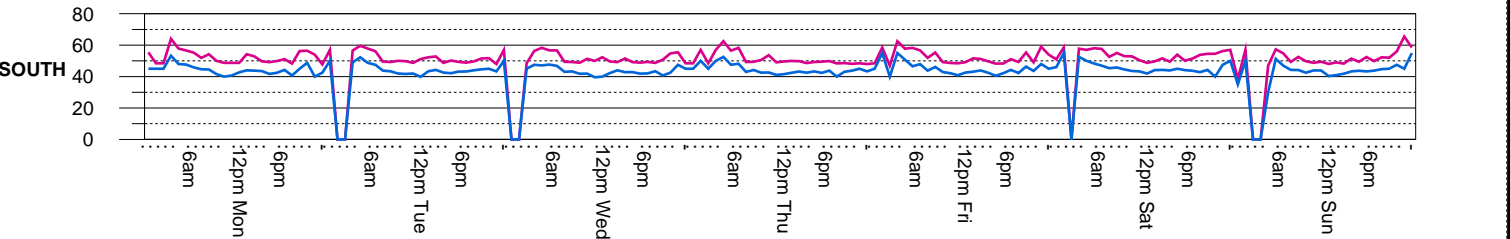
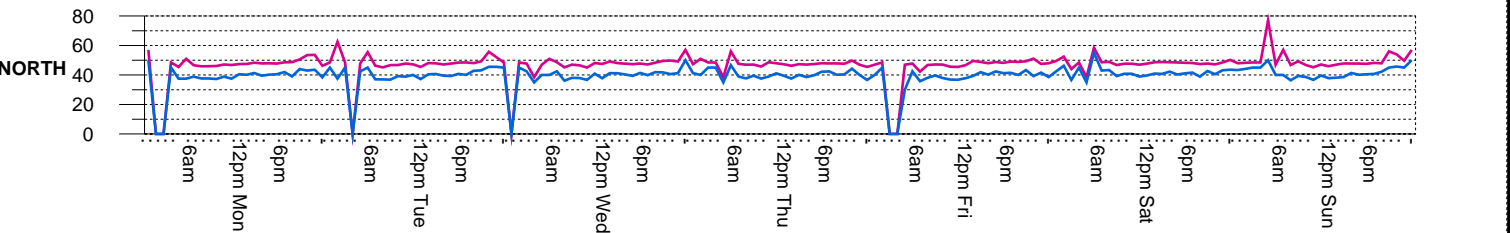
Previous Traffic Count Survey Data (3rd-9th November 2015)

Count Number 2938 **Lat/Long** : S34 21.361 / E150 29.676 **GOOGLE MAP**
Street WEST PARADE, HILL TOP : Between ROSINA STREET & WATTLE RIDGE ROAD (bidirectional)
Location Count 1, between Rosina Street and Vera Street ELP 65 - 3V0150 on 50km/h sign pole.

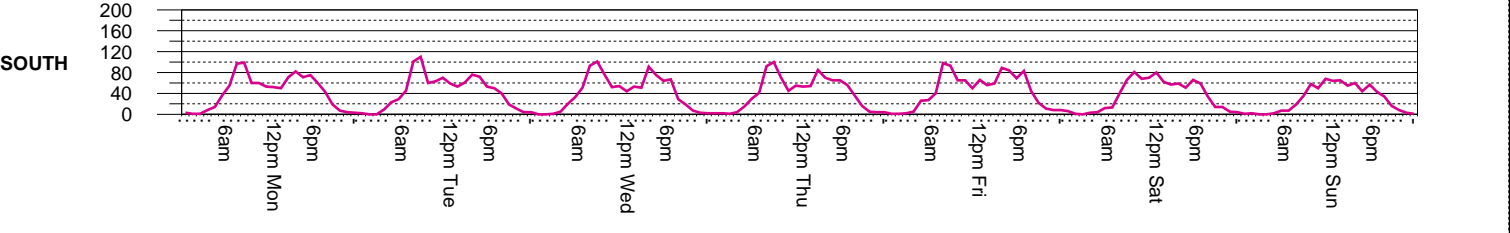
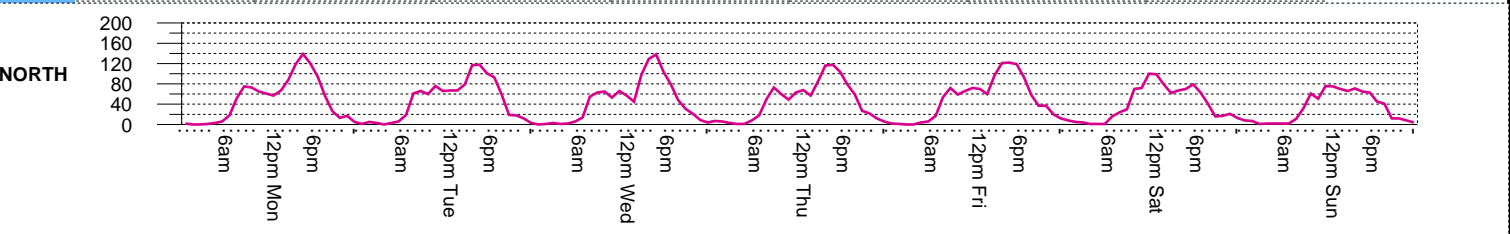
Start Date 03-NOV-15
Start Time 100
Duration 7 DAYS
Interval 1 HOUR

Speed Limit 50 **NORTH** **SOUTH** **COMBINED**
Weekly 50th Percentile Speed 40 44 42
Weekly 85th Percentile Speed 48 51 49
Five Day AADT 1132 1014 2146
Seven Day AADT 1058 948 2006

	MON 09-NOV-15			TUE 03-NOV-15			WED 04-NOV-15			THU 05-NOV-15			FRI 06-NOV-15			SAT 07-NOV-15			SUN 08-NOV-15			SEVENDAY AVERAGE		
	NORTH	SOUTH	BiDir	NORTH	SOUTH	BiDir	NORTH	SOUTH	BiDir	NORTH	SOUTH	BiDir	NORTH	SOUTH	BiDir	NORTH	SOUTH	BiDir	NORTH	SOUTH	BiDir	NORTH	SOUTH	BiDir
85%ile	47.8	52.0	49.2	47.8	51.0	49.1	47.7	50.2	48.9	47.6	50.1	48.8	48.0	51.6	49.3	48.1	52.4	49.4	47.7	49.7	48.8	47.8	51.0	49.1
50%ile	39.7	43.5	41.6	39.8	43.5	41.7	39.8	43.0	41.4	40.0	43.3	41.7	39.9	43.6	41.8	40.9	44.2	42.5	39.8	43.3	41.6	40.0	43.5	41.8
> 60 k	4	14	18	8	14	22	4	14	18	0	15	15	5	12	17	2	15	17	4	9	13	3.857	13.29	17.14
%age	.3	1.4	.8	.7	1.4	1.0	.4	1.4	.9	.0	1.5	.7	.4	1.1	.7	.2	1.7	.9	.5	1.3	.9	.4	1.4	.9
> 70 k	0	1	1	1	1	2	0	0	0	0	0	0	1	0	1	0	1	1	1	1	0	1	4286	.4286
%age	.0	.1	.0	.1	.1	.1	.0	.0	.0	.0	.0	.0	.1	.0	.0	.0	.1	.1	.1	.0	.1	.0	.0	.0



	MON	TUE	WED	THU	FRI	SAT	SUN	Average																
Short %	93.6	89.5	91.7	93.5	89.8	91.7	93.6	89.5	91.6	95.4	92.4	94.0	95.1	91.3	93.3	97.5	93.1	95.4	97.8	93.8	96.0	95.0	91.2	93.2
Med %	6.1	10.0	7.9	6.2	9.7	7.8	6.1	10.2	8.1	4.5	7.5	5.9	4.8	8.1	6.4	2.4	6.2	4.2	2.0	5.7	3.8	4.8	8.4	6.5
Long %	.3	.6	.5	.4	.5	.4	.3	.3	.3	.1	.1	.1	.1	.6	.3	.1	.7	.4	.1	.4	.3	.2	.5	.3
AM Pk Vo	75	99	174	76	110	176	66	101	164	73	100	173	72	98	165	100	81	170	76	68	144	77	94	167
PM Pk Vo	139	82	210	118	76	193	138	91	220	118	85	186	122	89	210	99	80	179	75	65	139	116	81	191
7-7pm 24Hr Tot	1010	830	1840	971	828	1799	952	821	1773	922	810	1732	1005	877	1882	815	759	1574	686	618	1304	909	792	1701
Class 0	29	23	52	17	12	29	18	9	27	17	13	30	18	14	32	23	15	38	13	8	21	19	13	33
Class 1	1035	877	1912	1015	886	1901	995	871	1866	1020	878	1898	1107	953	2060	892	777	1669	731	629	1360	971	839	1809
Class 2	19	16	35	14	13	27	9	7	16	5	5	10	15	12	27	20	17	37	26	19	45	15	13	28
Class 3	51	82	133	49	77	126	51	88	139	42	68	110	49	80	129	21	54	75	15	39	54	40	70	109
Class 4	18	20	38	19	20	39	14	13	27	7	4	11	9	7	16	2	2	1	0	1	1	10	9	19
Class 5	1	0	1	1	1	2	2	0	0	0	1	1	0	0	0	0	0	0	0	1	1	1	1	1
Class 6	3	3	3	0	1	2	2	2	2	2	4	2	3	3	3	1	4	4	0	1	1	1	2	3
Class 7	1	1	1	1	2	0	0	0	0	0	1	1	0	2	0	0	3	3	0	1	1	1	1	1
Class 8	0	0	0	0	0	0	1	1	0	0	0	0	1	1	2	0	0	0	0	0	0	0	0	1
Class 9	0	0	0	1	1	0	0	0	1	1	0	0	1	1	2	0	0	0	1	1	2	1	1	1
Class 10	0	0	0	1	1	0	0	0	0	0	0	0	0	0	0	0	0	0	0	0	0	0	0	0
Class 11	0	0	0	0	0	0	0	0	0	0	0	0	0	0	0	0	0	0	0	0	0	0	0	0
Class 12	0	0	0	0	0	0	0	0	0	0	0	0	0	0	0	0	0	0	0	0	0	0	0	0
Class 13	0	0	0	0	0	0	0	0	0	0	0	0	0	0	0	0	0	0	0	0	0	0	0	0



Count Number 2939

Lat/Long : S34 19.870 / E150 28.951

GOOGLE MAP

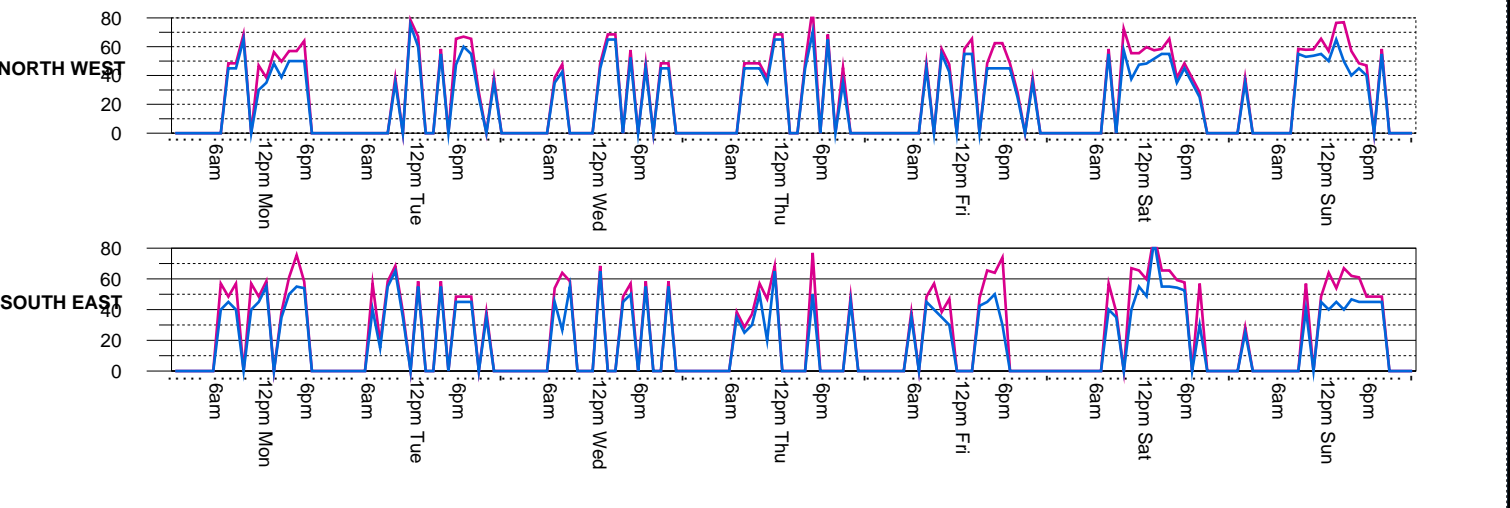
Street WATTLE RIDGE ROAD, HILL TOP : Between WEST PARADE & WATTLE RIDGE (bidirectional)

Location Count 2, about 300 Mtrs northwest of Lyrebird Close. ELP 8244288

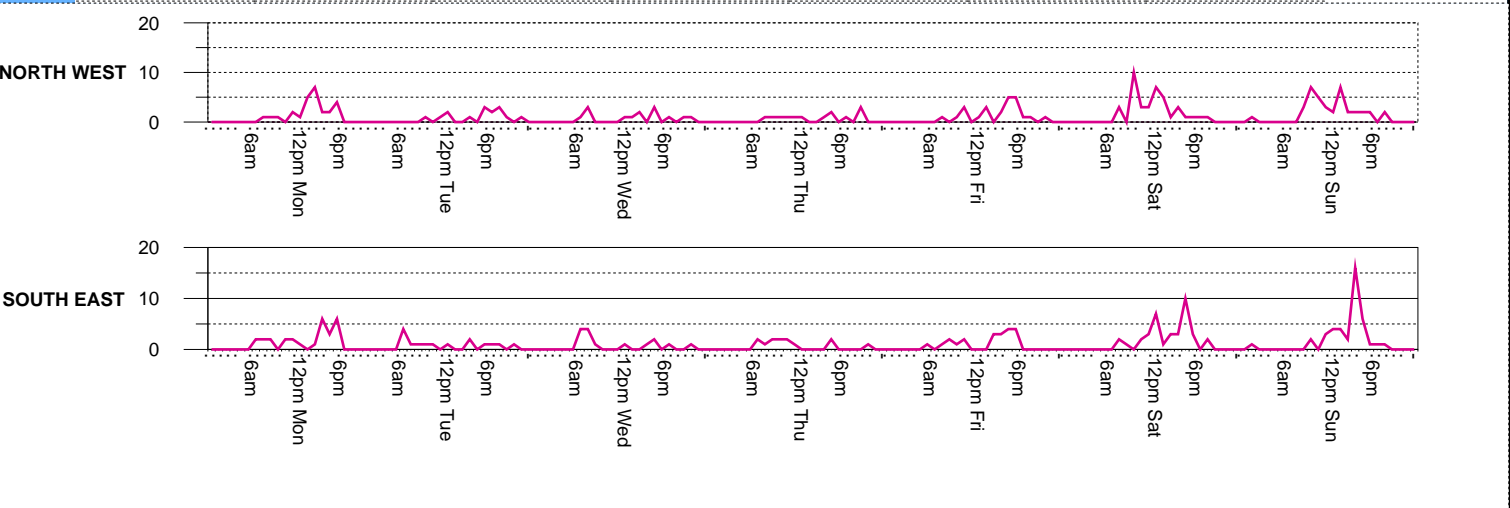
Start Date 03-NOV-15
 Start Time 100
 Duration 7 DAYS
 Interval 1 HOUR

Speed Limit	60	NORTH WEST	SOUTH EAST	COMBINED
Weekly 50th Percentile Speed		49	47	48
Weekly 85th Percentile Speed		62	60	61
Five Day AADT		18	18	37
Seven Day AADT		24	24	48

	MON 09-NOV-15			TUE 03-NOV-15			WED 04-NOV-15			THU 05-NOV-15			FRI 06-NOV-15			SAT 07-NOV-15			SUN 08-NOV-15			SEVENDAY AVERAGE		
	NORTH	SOUTH	BiDir	NORTH	SOUTH	BiDir	NORTH	SOUTH	BiDir	NORTH	SOUTH	BiDir	NORTH	SOUTH	BiDir	NORTH	SOUTH	BiDir	NORTH	SOUTH	BiDir	NORTH	SOUTH	BiDir
85%ile	56.8	58.3	57.8	66.9	57.9	63.0	63.0	59.5	61.3	67.6	60.5	66.2	58.5	59.5	58.9	60.4	62.4	61.6	61.5	59.8	60.2	62.1	59.7	61.3
50%ile	45.8	50.4	47.8	53.8	48.3	51.0	46.7	48.8	47.5	47.0	41.3	44.4	45.5	42.5	44.4	51.6	52.8	52.2	52.8	44.7	48.7	49.0	47.0	48.0
> 70 k	0	1	1	1	0	1	0	0	0	1	1	2	0	1	1	2	1	3	4	0	4	1.143	.5714	1.714
%age	.0	3.7	1.9	6.6	.0	3.3	.0	.0	.0	7.6	7.6	7.6	.0	4.7	2.2	5.1	2.7	3.9	10.5	.0	5.0	4.2	2.7	3.4
> 80 k	0	0	0	0	0	0	0	0	0	1	0	1	0	0	0	0	1	1	0	0	0	1.429	.1429	.2857
%age	.0	.0	.0	.0	.0	.0	.0	.0	.0	7.6	.0	3.8	.0	.0	.0	.0	2.7	1.3	.0	.0	.0	1.1	.4	.7



	MON 09-NOV-15			TUE 03-NOV-15			WED 04-NOV-15			THU 05-NOV-15			FRI 06-NOV-15			SAT 07-NOV-15			SUN 08-NOV-15			SEVENDAY AVERAGE		
	NORTH	SOUTH	BiDir	NORTH	SOUTH	BiDir	NORTH	SOUTH	BiDir	NORTH	SOUTH	BiDir	NORTH	SOUTH	BiDir	NORTH	SOUTH	BiDir	NORTH	SOUTH	BiDir	NORTH	SOUTH	BiDir
Short %	84.6	96.3	90.6	100.0	93.3	96.7	92.9	93.3	93.1	69.2	92.3	80.8	79.2	100.0	88.9	89.7	97.3	93.4	84.2	97.6	91.1	85.8	96.4	91.1
Med %	15.4	3.7	9.4	.0	6.7	3.3	7.1	6.7	6.9	30.8	7.7	19.2	20.8	.0	11.1	7.7	2.7	5.3	13.2	.0	6.3	13.0	3.0	8.0
Long %	.0	.0	.0	.0	.0	.0	.0	.0	.0	.0	.0	.0	.0	.0	.0	.0	.0	1.3	2.6	2.4	2.5	1.2	.6	.9
AM Pk Vo	2	2	4	1	4	4	3	4	7	1	2	3	3	2	5	10	3	10	7	3	9	4	3	6
PM Pk Vo	7	6	10	3	2	4	3	2	5	3	2	4	5	4	9	7	10	14	7	16	18	5	6	9
7-7pm 24Hr Tot	26	25	51	10	9	19	11	10	21	10	10	20	22	20	42	38	35	73	35	39	74	22	21	43
	26	27	53	15	15	30	14	15	29	13	13	26	24	21	45	39	37	76	38	41	79	24	24	48
Class 0	1	2	3	1	0	1	6	3	6	3	2	5	3	3	8	2	1	3	2	1	3	3	2	5
Class 1	21	24	45	14	13	27	7	11	18	6	10	19	14	18	32	32	33	65	27	36	63	17	21	38
Class 2	0	0	0	0	0	0	0	0	0	0	0	0	0	0	0	0	0	0	0	0	0	0	0	0
Class 3	4	1	5	0	1	1	1	1	2	2	2	5	0	0	0	3	1	4	5	0	5	5	3	1
Class 4	0	0	0	0	0	0	0	0	0	0	0	0	0	0	0	0	0	0	0	0	0	0	0	0
Class 5	0	0	0	0	0	0	0	0	0	0	0	0	0	0	0	0	0	0	0	0	0	0	0	0
Class 6	0	0	0	0	0	0	0	0	0	0	0	0	0	0	0	0	0	0	0	0	0	0	0	0
Class 7	0	0	0	0	0	0	0	0	0	0	0	0	0	0	0	0	0	0	0	0	0	0	0	0
Class 8	0	0	0	0	0	0	0	0	0	0	0	0	0	0	0	0	0	0	0	0	0	0	0	0
Class 9	0	0	0	0	0	0	0	0	0	0	0	0	0	0	0	0	0	0	0	0	0	0	0	0
Class 10	0	0	0	0	0	0	0	0	0	0	0	0	0	0	0	0	0	0	0	0	0	0	0	0
Class 11	0	0	0	0	0	0	0	0	0	0	0	0	0	0	0	0	0	0	0	0	0	0	0	0
Class 12	0	0	0	0	0	0	0	0	0	0	0	0	0	0	0	0	0	0	0	0	0	0	0	0
Class 13	0	0	0	0	0	0	0	0	0	0	0	0	0	0	0	0	0	0	0	0	0	0	0	0



Count Number 2940

Lat/Long : S34 19.070 / E150 27.687

GOOGLE MAP

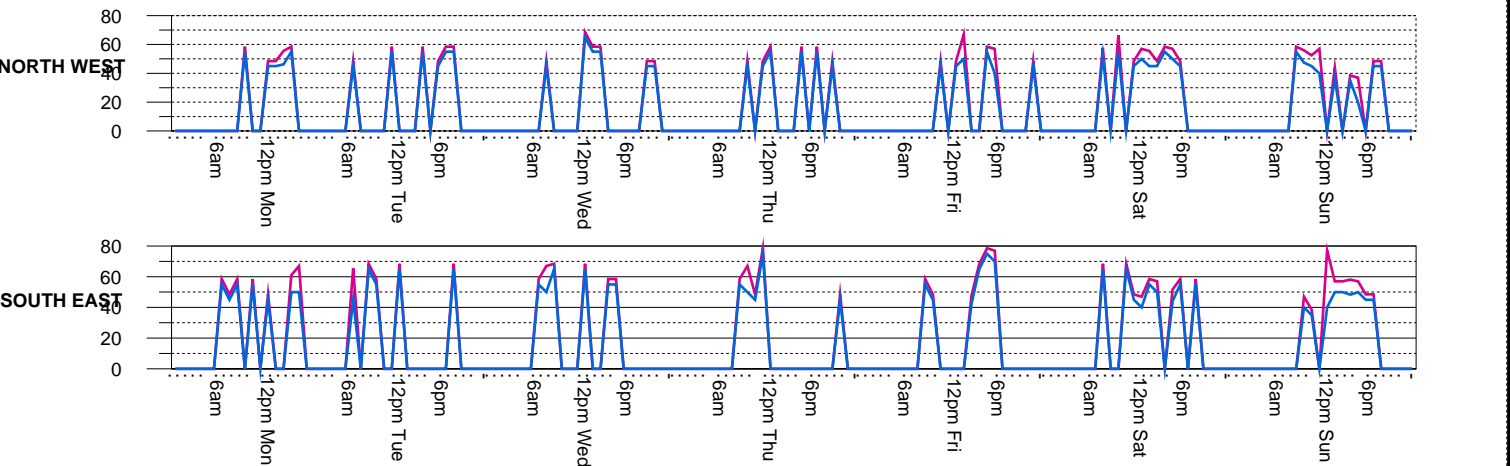
Street WATTLE RIDGE ROAD, HILL TOP : Between WEST PARADE & WATTLE RIDGE (bidirectional)

Location Count 3, about 2.75 Kms northwest of Lyrebird Close and 500 Mts northwest of The Westbreak, on tree.

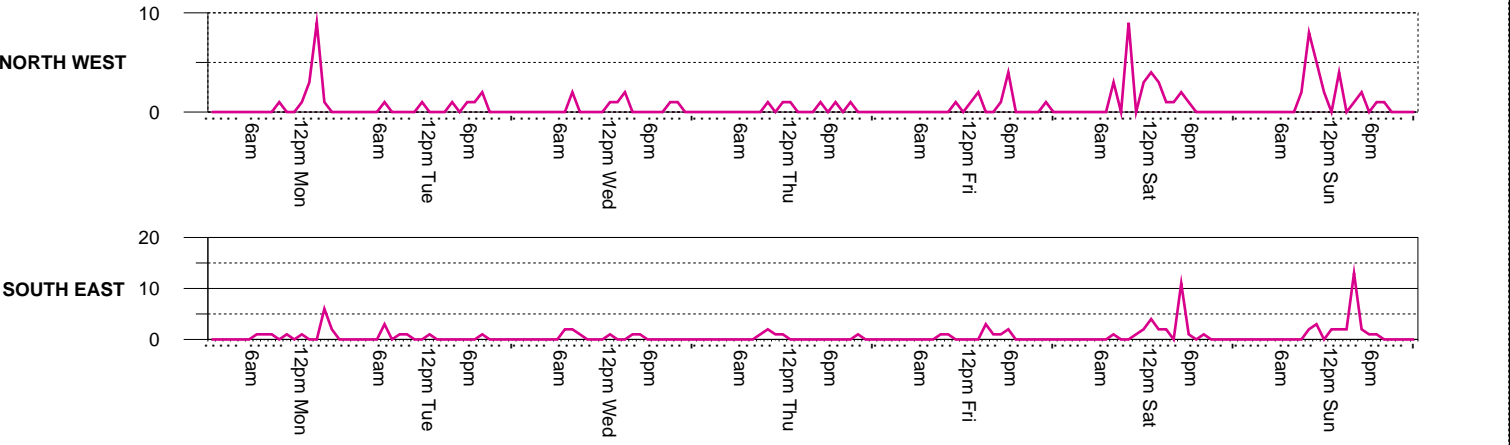
Start Date 03-NOV-15
 Start Time 100
 Duration 7 DAYS
 Interval 1 HOUR

Speed Limit	60	NORTH WEST	SOUTH EAST	COMBINED
Weekly 50th Percentile Speed		48	49	49
Weekly 85th Percentile Speed		57	63	59
Five Day AADT		9	9	18
Seven Day AADT		14	14	28

	MON 09-NOV-15			TUE 03-NOV-15			WED 04-NOV-15			THU 05-NOV-15			FRI 06-NOV-15			SAT 07-NOV-15			SUN 08-NOV-15			SEVENDAY AVERAGE		
	NORTH	SOUTH	BiDir	NORTH	SOUTH	BiDir	NORTH	SOUTH	BiDir	NORTH	SOUTH	BiDir	NORTH	SOUTH	BiDir	NORTH	SOUTH	BiDir	NORTH	SOUTH	BiDir	NORTH	SOUTH	BiDir
85%ile	55.5	60.3	57.8	57.9	67.4	64.8	59.3	66.0	64.0	57.0	71.0	62.0	58.3	73.3	67.2	58.3	57.5	58.0	54.4	57.3	55.9	57.3	64.7	61.4
50%ile	46.9	51.0	48.6	53.0	61.3	55.0	50.0	57.5	54.3	50.0	50.0	50.0	47.5	55.0	49.3	50.4	46.8	48.7	44.0	45.6	44.7	48.8	52.4	50.1
> 70 k	0	0	0	0	0	0	0	0	0	0	1	1	0	2	2	1	0	1	0	1	1	1429	5714	7143
%age	.0	.0	.0	.0	.0	.0	.0	.0	.0	.0	16.0	8.0	.0	21.6	10.3	3.7	0	1.9	.0	3.5	1.8	.5	5.9	3.1
> 80 k	0	0	0	0	0	0	0	0	0	0	0	0	0	0	0	0	0	0	0	0	0	0	0	0
%age	.0	.0	.0	.0	.0	.0	.0	.0	.0	.0	.0	.0	.0	.0	.0	.0	.0	.0	.0	.0	.0	.0	.0	.0



	MON 09-NOV-15			TUE 03-NOV-15			WED 04-NOV-15			THU 05-NOV-15			FRI 06-NOV-15			SAT 07-NOV-15			SUN 08-NOV-15			SEVENDAY AVERAGE		
	NORTH	SOUTH	BiDir	NORTH	SOUTH	BiDir	NORTH	SOUTH	BiDir	NORTH	SOUTH	BiDir	NORTH	SOUTH	BiDir	NORTH	SOUTH	BiDir	NORTH	SOUTH	BiDir	NORTH	SOUTH	BiDir
Short %	100.0	92.3	96.4	100.0	85.7	92.9	87.5	87.5	87.5	100.0	83.3	91.7	90.0	88.9	89.5	92.6	96.0	94.2	96.2	89.3	92.6	94.9	90.6	92.8
Med %	.0	7.7	3.6	.0	14.3	7.1	12.5	12.5	12.5	.0	16.7	8.3	.0	11.1	5.3	7.4	4.0	5.8	.0	7.1	3.7	3.0	8.3	5.6
Long %	.0	.0	.0	.0	.0	.0	.0	.0	.0	.0	.0	10.0	.0	.0	5.3	.0	.0	3.8	3.6	.0	3.7	2.0	1.0	1.5
AM Pk Vo	1	1	1	1	3	4	2	2	4	1	2	3	1	1	1	9	2	9	8	3	10	3	2	5
PM Pk Vo	9	6	9	2	1	3	2	1	2	1	1	4	3	3	6	4	11	13	4	13	14	4	5	7
7-7pm 24Hr Tot	15	12	27	4	3	6	6	6	12	5	5	10	9	9	18	27	24	51	25	28	53	13	12	25
Class 0	0	0	0	0	0	0	0	0	0	0	0	0	0	0	0	0	0	0	0	0	0	0	0	0
Class 1	15	12	27	7	7	14	7	7	14	6	5	11	9	8	17	25	24	49	23	23	46	13	12	25
Class 2	0	0	0	0	1	0	0	0	0	0	0	0	0	0	0	0	0	0	0	0	0	0	0	1
Class 3	0	1	1	0	1	1	1	1	1	0	1	1	0	1	1	1	1	3	2	2	2	1	1	2
Class 4	0	0	0	0	0	0	0	0	0	0	0	0	0	0	0	0	0	0	0	0	0	0	0	0
Class 5	0	0	0	0	0	0	0	0	0	0	0	0	0	0	0	0	0	0	0	0	0	0	0	0
Class 6	0	0	0	0	0	0	0	0	0	0	0	0	0	0	0	0	0	0	0	0	0	0	0	0
Class 7	0	0	0	0	0	0	0	0	0	0	0	0	0	0	0	0	0	0	0	0	0	0	0	0
Class 8	0	0	0	0	0	0	0	0	0	0	0	0	0	0	0	0	0	0	0	0	0	0	0	0
Class 9	0	0	0	0	0	0	0	0	0	0	0	0	0	0	0	0	0	0	0	0	0	0	0	0
Class 10	0	0	0	0	0	0	0	0	0	0	0	0	0	0	0	0	0	0	0	0	0	0	0	0
Class 11	0	0	0	0	0	0	0	0	0	0	0	0	0	0	0	0	0	0	0	0	0	0	0	0
Class 12	0	0	0	0	0	0	0	0	0	0	0	0	0	0	0	0	0	0	0	0	0	0	0	0
Class 13	0	0	0	0	0	0	0	0	0	0	0	0	0	0	0	0	0	0	0	0	0	0	0	0



Count Number 2941

Lat/Long : S34 18.464 / E150 27.001

GOOGLE MAP

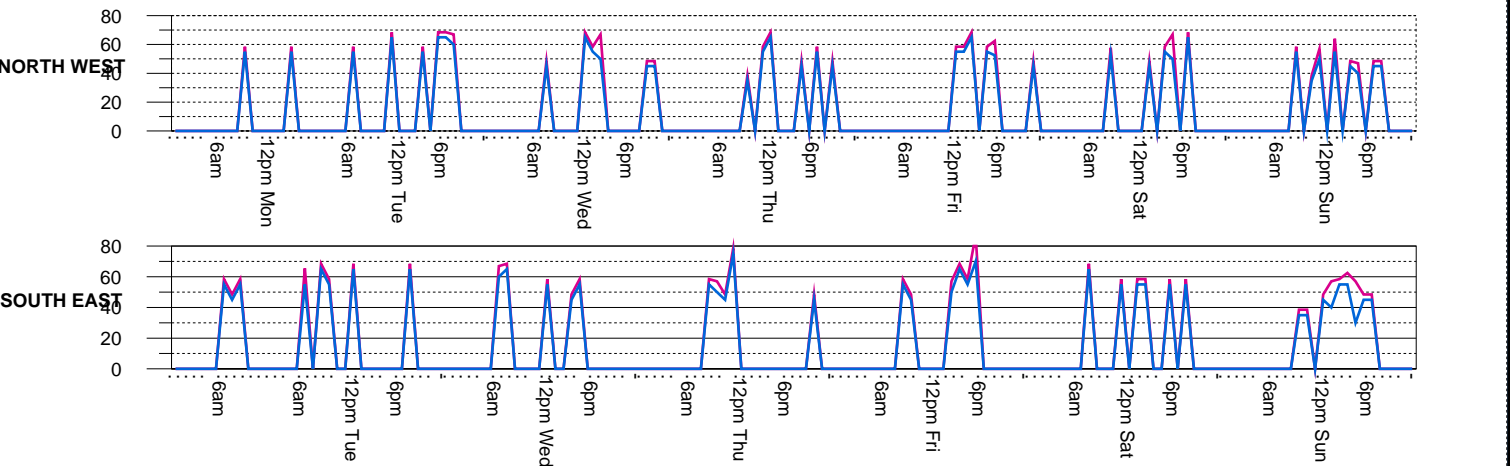
Street WATTLE RIDGE ROAD, HILL TOP : Between WEST PARADE & WATTLE RIDGE (bidirectional)

Location Count 4, about 1.5 Kms northwest of The Westbreak and about 1.3 KMS from Count 3, on tree.

Start Date 03-NOV-15
 Start Time 100
 Duration 7 DAYS
 Interval 1 HOUR

Speed Limit	60	NORTH WEST	SOUTH EAST	COMBINED
Weekly 50th Percentile Speed		53	54	54
Weekly 85th Percentile Speed		63	65	64
Five Day AADT		6	6	13
Seven Day AADT		8	7	15

	MON 09-NOV-15			TUE 03-NOV-15			WED 04-NOV-15			THU 05-NOV-15			FRI 06-NOV-15			SAT 07-NOV-15			SUN 08-NOV-15			SEVENDAY AVERAGE		
	NORTH	SOUTH	BiDir	NORTH	SOUTH	BiDir	NORTH	SOUTH	BiDir	NORTH	SOUTH	BiDir	NORTH	SOUTH	BiDir	NORTH	SOUTH	BiDir	NORTH	SOUTH	BiDir	NORTH	SOUTH	BiDir
85%ile	58.5	57.8	58.1	67.4	67.4	67.4	64.8	66.5	65.8	61.0	71.0	62.0	62.5	69.0	65.8	64.0	61.0	63.0	57.6	57.9	57.8	62.3	64.4	62.8
50%ile	55.0	52.5	53.8	61.3	61.3	61.3	48.8	58.3	55.0	50.0	50.0	50.0	54.0	56.7	55.0	53.3	56.0	55.0	47.5	48.8	48.0	52.8	54.8	54.0
> 70 k	0	0	0	0	0	0	0	0	0	0	1	1	0	1	1	0	0	0	0	0	0	0	0	0
%age	0	0	0	0	0	0	0	0	0	0	16.0	8.0	0	12.1	5.4	0	0	0	0	0	0	0	0	0
> 80 k	0	0	0	0	0	0	0	0	0	0	0	0	0	1	1	0	0	0	0	0	0	0	0	0
%age	0	0	0	0	0	0	0	0	0	0	0	0	0	12.1	5.4	0	0	0	0	0	0	0	0	0



	MON 09-NOV-15			TUE 03-NOV-15			WED 04-NOV-15			THU 05-NOV-15			FRI 06-NOV-15			SAT 07-NOV-15			SUN 08-NOV-15			SEVENDAY AVERAGE		
	NORTH	SOUTH	BiDir	NORTH	SOUTH	BiDir	NORTH	SOUTH	BiDir	NORTH	SOUTH	BiDir	NORTH	SOUTH	BiDir	NORTH	SOUTH	BiDir	NORTH	SOUTH	BiDir	NORTH	SOUTH	BiDir
Short %	100.0	66.7	80.0	100.0	100.0	100.0	71.4	85.7	78.6	100.0	100.0	100.0	90.0	100.0	94.4	87.5	100.0	92.9	76.9	80.0	78.6	86.8	90.4	88.6
Med %	0	33.3	20.0	0	0	0	28.6	14.3	21.4	0	0	0	0	0	0	0	12.5	0	7.1	15.4	13.3	14.3	9.4	7.7
Long %	0	0	0	0	0	0	0	0	0	0	0	0	10.0	0	5.6	0	0	0	7.7	6.7	7.1	3.8	1.9	2.9
AM Pk Vo	1	1	1	1	3	4	1	2	3	1	2	3	1	1	1	3	3	1	3	2	1	2	1	2
PM Pk Vo	1	1	1	2	1	3	2	1	2	1	1	1	5	2	7	2	2	1	2	4	5	6	2	3
7-7pm 24Hr Tot	2	2	4	4	7	7	5	7	10	5	5	10	8	8	17	8	5	13	12	15	27	6	6	13
Class 0	0	0	0	0	0	0	0	0	0	0	0	0	1	0	1	0	0	0	0	0	0	0	0	0
Class 1	2	2	4	7	9	10	5	6	11	6	6	12	8	8	16	7	6	13	9	11	20	6	6	13
Class 2	0	0	0	0	0	0	0	0	0	0	0	0	0	0	0	0	0	0	0	0	0	0	0	0
Class 3	0	1	1	0	0	0	2	1	0	0	0	0	0	0	0	1	0	1	2	2	4	1	1	1
Class 4	0	0	0	0	0	0	0	0	0	0	0	0	0	0	0	0	0	0	0	0	0	0	0	0
Class 5	0	0	0	0	0	0	0	0	0	0	0	0	0	0	0	0	0	0	0	0	0	0	0	0
Class 6	0	0	0	0	0	0	0	0	0	0	0	0	0	0	0	0	0	0	0	0	0	0	0	0
Class 7	0	0	0	0	0	0	0	0	0	0	0	0	0	0	0	0	0	0	0	0	0	0	0	0
Class 8	0	0	0	0	0	0	0	0	0	0	0	0	0	0	0	0	0	0	0	0	0	0	0	0
Class 9	0	0	0	0	0	0	0	0	0	0	0	0	0	0	0	0	0	0	0	0	0	0	0	0
Class 10	0	0	0	0	0	0	0	0	0	0	0	0	0	0	0	0	0	0	0	0	0	0	0	0
Class 11	0	0	0	0	0	0	0	0	0	0	0	0	0	0	0	0	0	0	0	0	0	0	0	0
Class 12	0	0	0	0	0	0	0	0	0	0	0	0	0	0	0	0	0	0	0	0	0	0	0	0
Class 13	0	0	0	0	0	0	0	0	0	0	0	0	0	0	0	0	0	0	0	0	0	0	0	0

