

Figure 1. Location of the proposed Stringybark Woodland offset area, the grassland offset area and the area of the landfill pit and associated infrastructure (transparent).

Note: The existing Stringybark Woodland contains some elements of Box Gum Woodland (individual Yellow Box and Blakely's Red Gum trees).

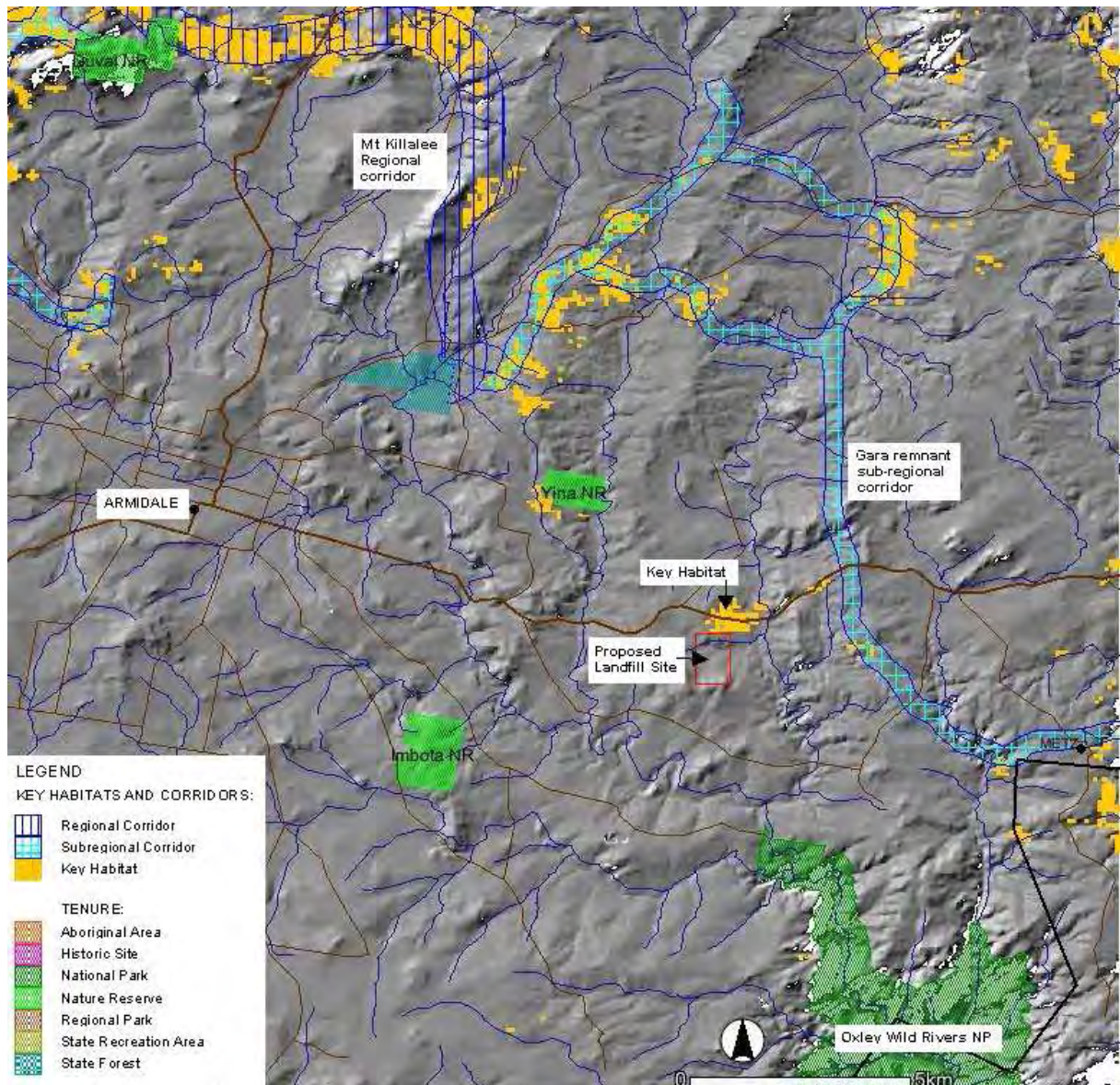


Figure 2. NPWS key habitats and corridors east of Armidale, NSW

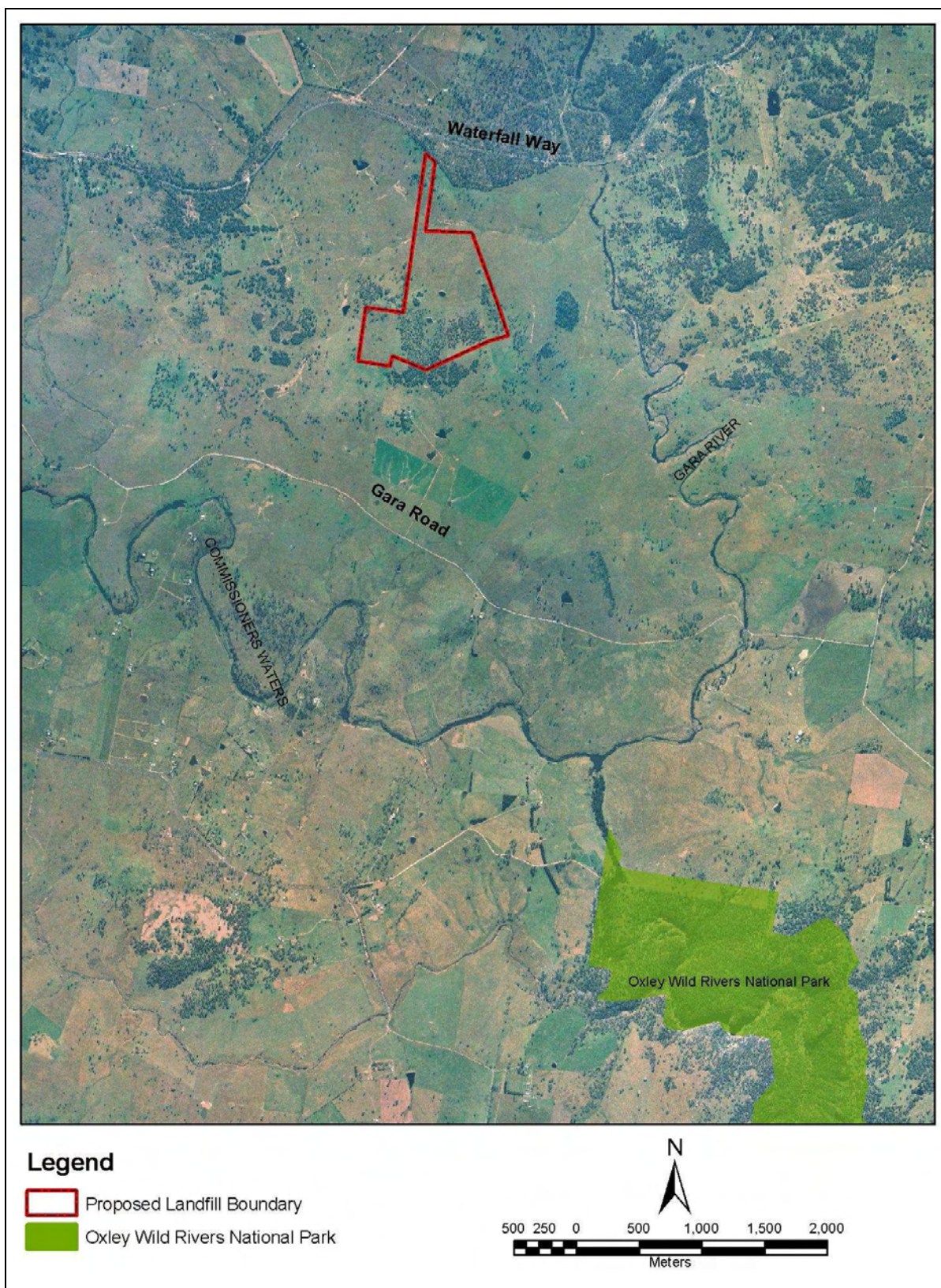


Figure 3. Aerial photo showing local context of study area