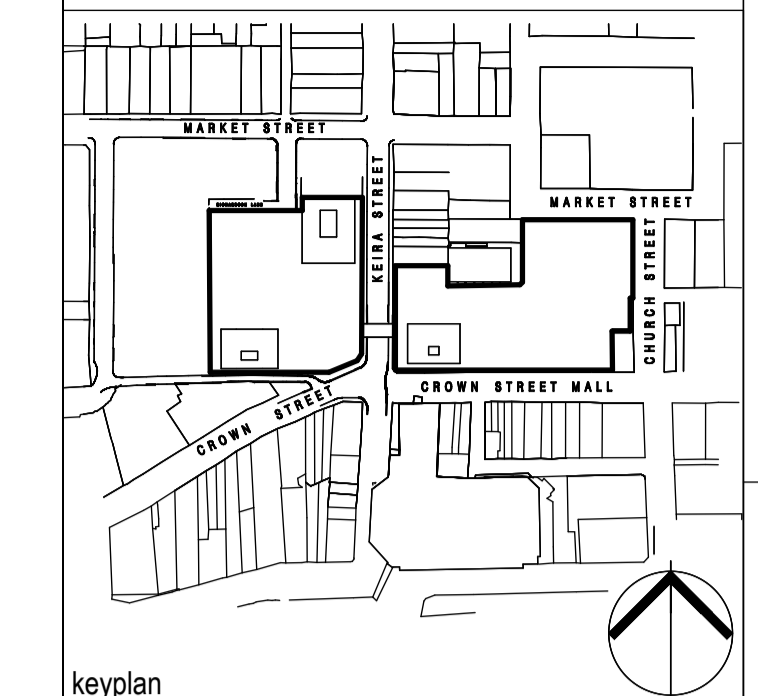


THIS DOCUMENT IS THE COPYRIGHT OF RICE DAUBNEY ARCHITECTS. ALL INFORMATION CONTAINED ON THIS DOCUMENT IS TO BE CHECKED AND VERIFIED ON SITE BY THE USER OR DESIGNER BEFORE COMMENCEMENT OF WORK. IT IS TO BE USED AS A GUIDE ONLY AND NOT SCALE DRAWING MANUALLY OR ELECTRONICALLY.

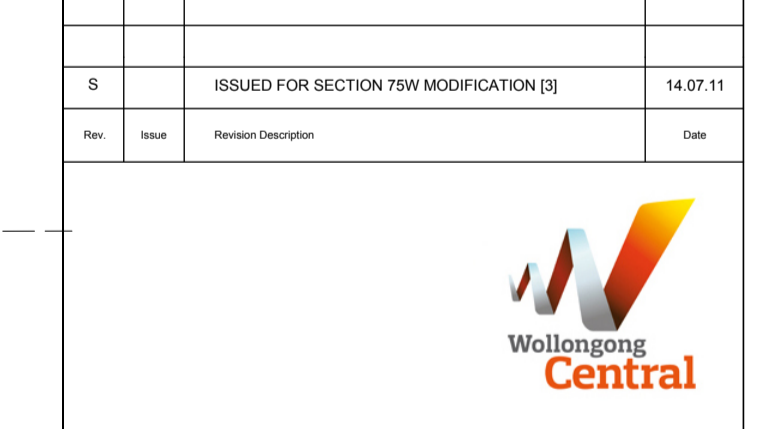


- LEGEND**
- MAJOR
  - MINI MAJOR
  - SPECIALTY
  - CAFE / FOOD
  - CINEMA
  - AMENITIES
  - CIRCULATION/BOH/SERVICES
  - MALL
  - COMMERCIAL CORE
  - CARPARK

THE NOTES AND CLOUDS ON THIS DRAWING IDENTIFY THE MAIN MODIFICATIONS TO THE DESIGN. MINOR CHANGES ARE NOT SEPARATELY IDENTIFIED.

- W1 CAR PARK RAMP RELOCATED FROM THE EASTERN SIDE OF THE BUILDING TO THE WESTERN SIDE
- W2 TRAVELLATOR LOWER GROUND FLOOR RETAIL SHIFTED TO THE EAST
- W3 RETAIL LIFT LOBBY RELOCATED TO APPROX POSITION OF FORMER TRAVELLATOR LOBBY

No.	Date	Revision/Description	By
1	14.07.11	ISSUED FOR SECTION 75W MODIFICATION (S)	



**The GPT Group**  
 Level 51, MLC Centre, 19 Market Place,  
 Sydney, NSW, 2000  
 P: 02 8239 3055 F: 02 8883 1799

**Hansen Yuncken Pty Ltd**  
 Sydney Level 6, 15 Bourke Road,  
 Mascot, NSW, 2020  
 P: 02 9770 7600 F: 02 9770 7601

**ARCHITECTS**  
**RICE DAUBNEY**  
 ANALYSING, CREATING AND  
 IMPLEMENTING ARCHITECTURE  
 170 WALKER STREET NORTH SYDNEY 2060  
 T: 02 9668 2666 F: 02 9668 2019  
 www.ricedaubney.com.au

**DRAWING TITLE:**  
**OVERALL FLOOR PLANS**  
**LEVEL B1 BASEMENT CARPARK**

SCALE: 1:500 @ B1, 1:1250 @ A3

DRAWN	CHECKED	
PROJECT NUMBER	DRAWING NUMBER	ISSUE
401632: DA-A100C	S	