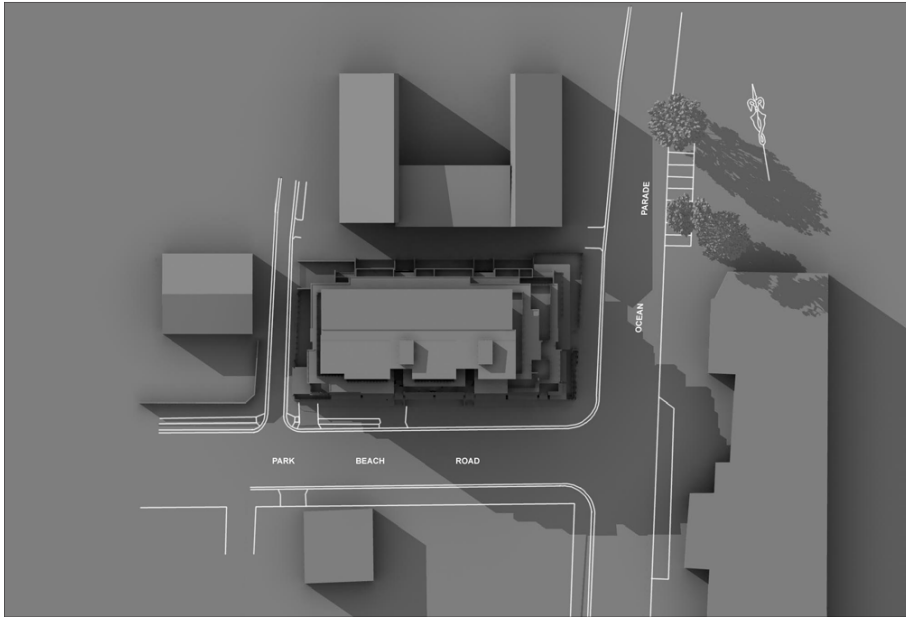


An aerial photograph of a mountain range covered in snow. The peaks are bright white, and the valleys and slopes are in deep shadow, creating a strong contrast. The shadows are cast from the peaks towards the right and slightly forward, indicating a light source from the upper left. The overall tone is a soft, pale blue.

APPENDIX D
SHADOW DIAGRAMS



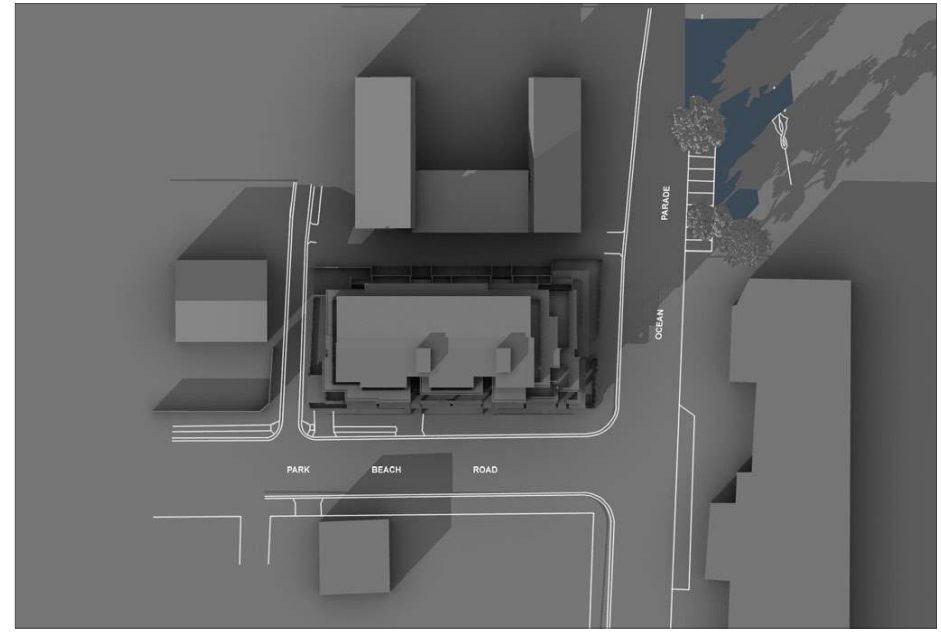
**JUNE 22nd
3PM EXISTING**



**JUNE 22nd
3PM PROPOSED**



**DECEMBER 22nd
6:30PM EXISTING**



**DECEMBER 22nd
6:30PM PROPOSED**

■ Additional overshadowing on cleared (grassed) dune area.