

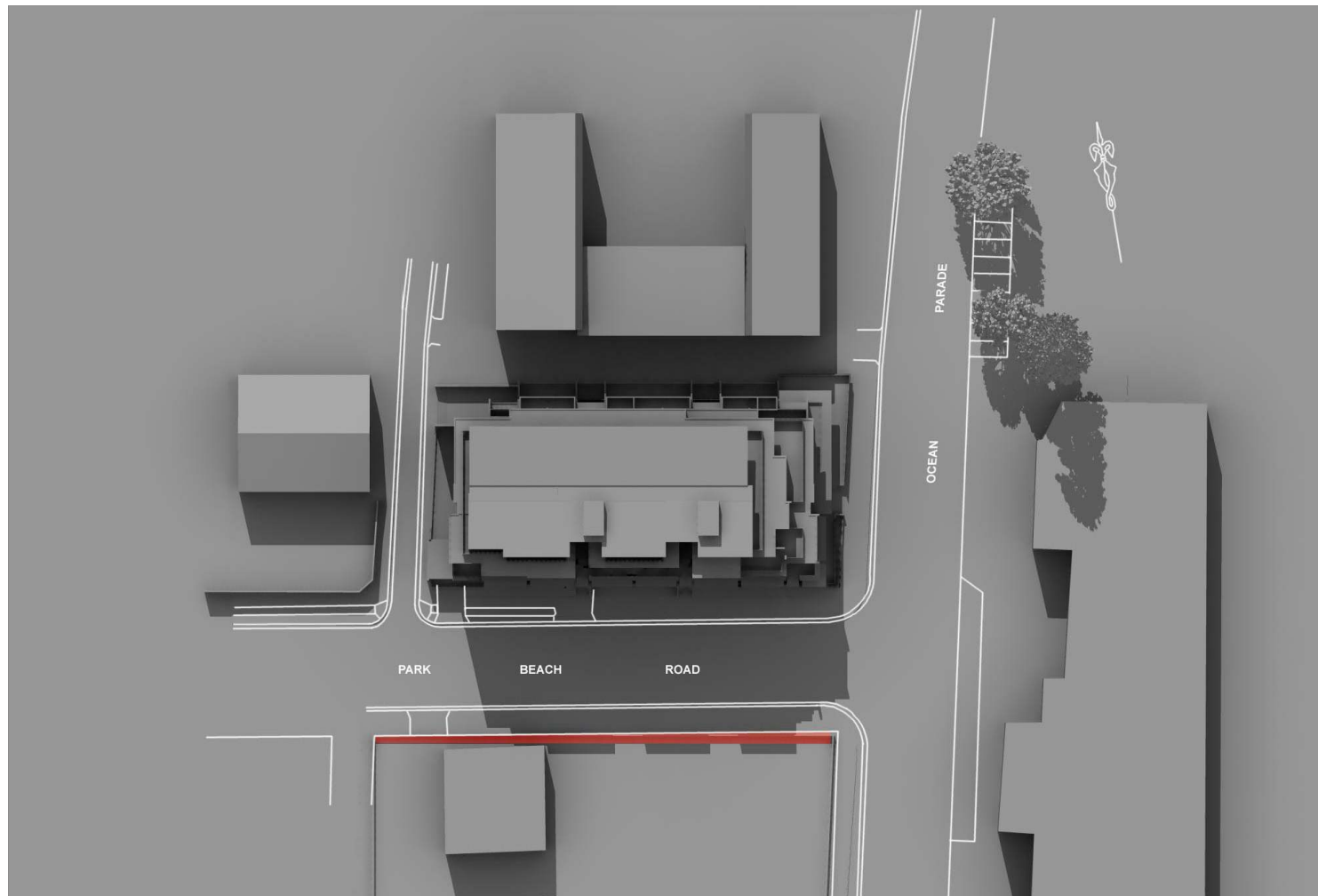
An aerial photograph of a mountain range covered in snow. The mountains are rugged and snow-covered, with a deep valley in the center. The sky is a clear, pale blue. The overall scene is bright and serene.

APPENDIX J.4

SHADOW DIAGRAMS FOR 12 NOON, 22 JUNE

J.4 Shadow Diagrams for 12.00 noon 22 June.

This shadow diagram indicates no detrimental effects on the surrounding area for this period.



**JUNE 22nd
12 NOON**

shadow caused by 1 meter high fence

**SHADOW ANALYSIS
AUGUST 2005**