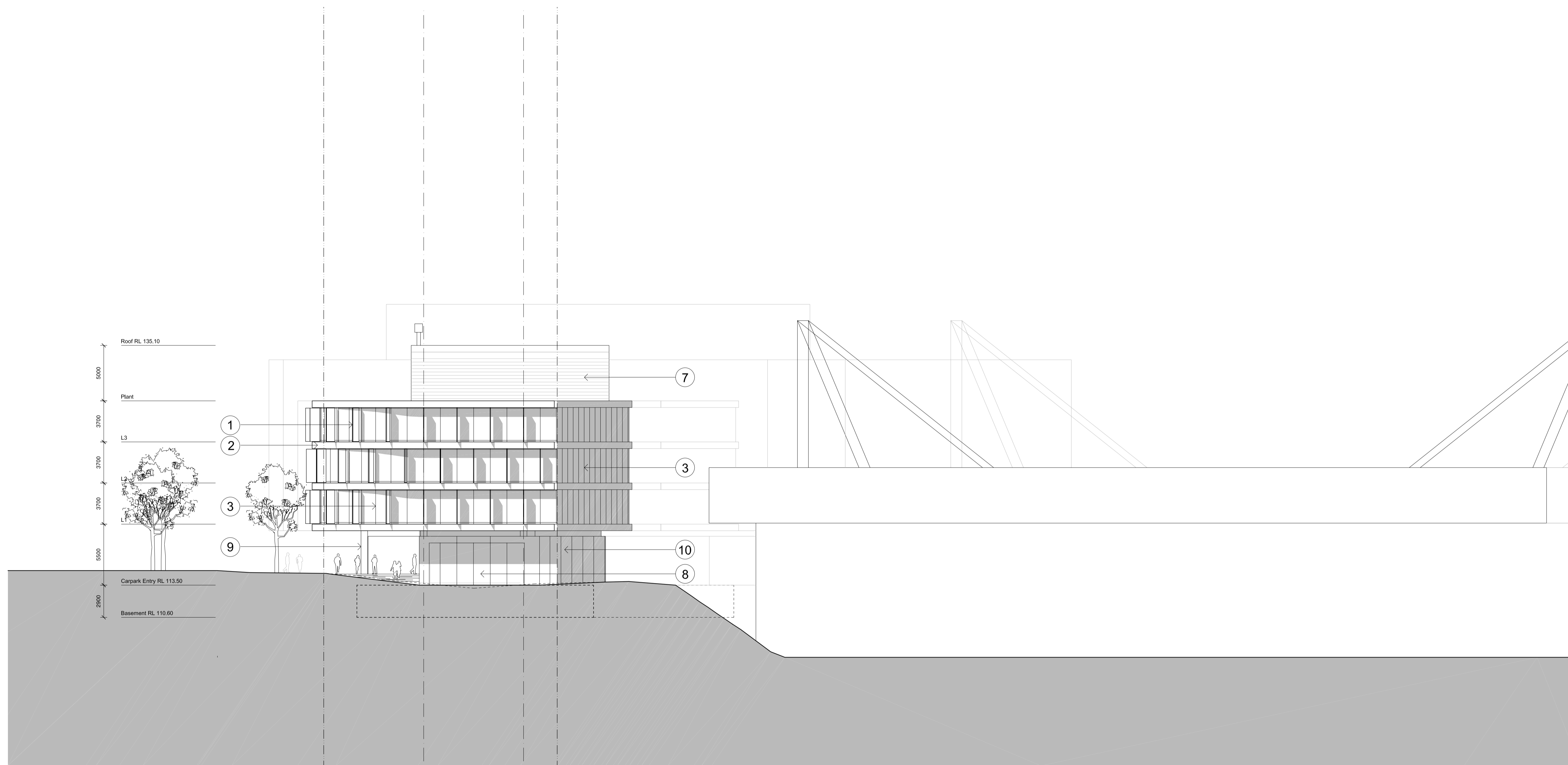


Check all dimensions and site conditions prior to commencement of any work, the purchase or ordering of any materials, fittings, plant, services or equipment and the preparation of shop drawings and/or the fabrication of any components.

Do not scale drawings - refer to figured dimensions only. Any discrepancies shall immediately be referred to the architect for clarification.

All drawings may not be reproduced or distributed without prior permission from the architect.



Rev.	Date	Description	Initial	Checked

OD | PARTNERSHIP PTY LIMITED

A Joint Venture between:
AVJennings DEVELOPMENTS
ASHF MORGAN PROPERTY

**Sydney Olympic Park
Site 13**

West Elevation

Status	Major Project Application
Scale	1:200@ A1, 1:400@ A3
Drawn	NM
Project no.	S10849
Date	May 14, 2008
Plot file	N:\ACADDWG\S10849 AVJENNINGS_SOPA_SITE13\PLOT SIDA\AR_DA_5-03.DWG
Drawing no.	AR EA 5 03 -

Discipline	Stage/Package	Type	No.	Revision

Melbourne 1 Nicholson Street Melbourne VIC 3000 Australia
 T 03 8664 6200 F 03 8664 6300 email melb@batessmart.com.au http://www.batessmart.com.au

Sydney 1/243 Liverpool Street East Sydney NSW 2010 Australia
 T 02 9380 7288 F 02 9380 7280 email syd@batessmart.com.au http://www.batessmart.com.au

Bates Smart Pty Ltd ABN 70 004 999 400

- External Finishes**
- Natural anodised aluminium vertical fins
 - Black anodised aluminium cladding band to slab edge
 - Performance vision glass double glazed units
 - Clear glass shopfront glazing
 - Operable windows
 - Natural anodised aluminium fixed horizontal louvres
 - Aluminium ventilation louvres
 - Perforated metal roller door
 - Off form concrete column
 - Opaque colour back glazing to loading dock
 - Off form concrete core wall

BATESSMART