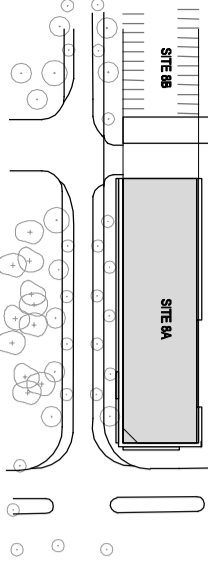


**1**  
**BASEMENT 2**  
 1:200 @ A2

REFERENCE MAP NORTH

- NOTES
1. DO NOT SCALE DRAWINGS. WRITTEN DIMENSIONS GOVERN.
  2. ALL DIMENSIONS ARE IN MILLIMETRES UNLESS NOTED OTHERWISE.
  3. ALL DIMENSIONS SHALL BE VERIFIED ON SITE BEFORE PROCEEDING WITH THE WORK. HASSELL SHALL BE NOTIFIED IN WRITING OF ANY DISCREPANCIES.
  4. CONFORM TO SPECIFICATIONS, REPORTS AND DRAWINGS.



© COPYRIGHT OF THIS DRAWING IS VESTED IN HASSELL LIMITED 2007 HASSELL LIMITED  
 THIS DRAWING IS AN UNCONTROLLED COPY, UNLESS NOTED OTHERWISE

REV	DESCRIPTION	DATE

REV	DESCRIPTION	DATE

REV	DESCRIPTION	DATE
K	DA ISSUE	12/10/2007
J	DA ISSUE	28/08/2007
I	DA ISSUE	18/05/2007
H	PRE-DA	04/05/2007
G	ISSUE FOR COSTING	17/01/2007
F	DA ISSUE	13/12/2006
E	PRELIMINARY ISSUE	05/12/2006
D	PRELIMINARY ISSUE	23/11/2006
C	PRELIMINARY ISSUE	
B	PRELIMINARY ISSUE	
A	PRELIMINARY ISSUE	

CONSULTANT  
**HASSELL LIMITED** AC/NR/71/45  
 88 CAMBERLAND STREET SYDNEY NSW 2000  
 AUSTRALIA  
 PHONE: 61 2 9230 2000  
 FAX: 61 2 9230 2006  
 EMAIL: SALES@HASSELL.COM.AU

CLIENT  
**WATPAC DEVELOPMENT PTY LTD**  
 PROJECT  
**PSA17515**  
**SITE 8A**

**HASSELL**

DRAWING TITLE		STATUS	
<b>Basement 2</b>		<b>DA-SUBMISSION</b>	
SCALE: A1: A2	DRAWN	CO-ORDINATED	CHECKED
1:200	CW/EB	CW	SO
JOB NO.	DRAWING NUMBER		
PSA17515	0098		
			APPROVED
			SO
			REV
			K