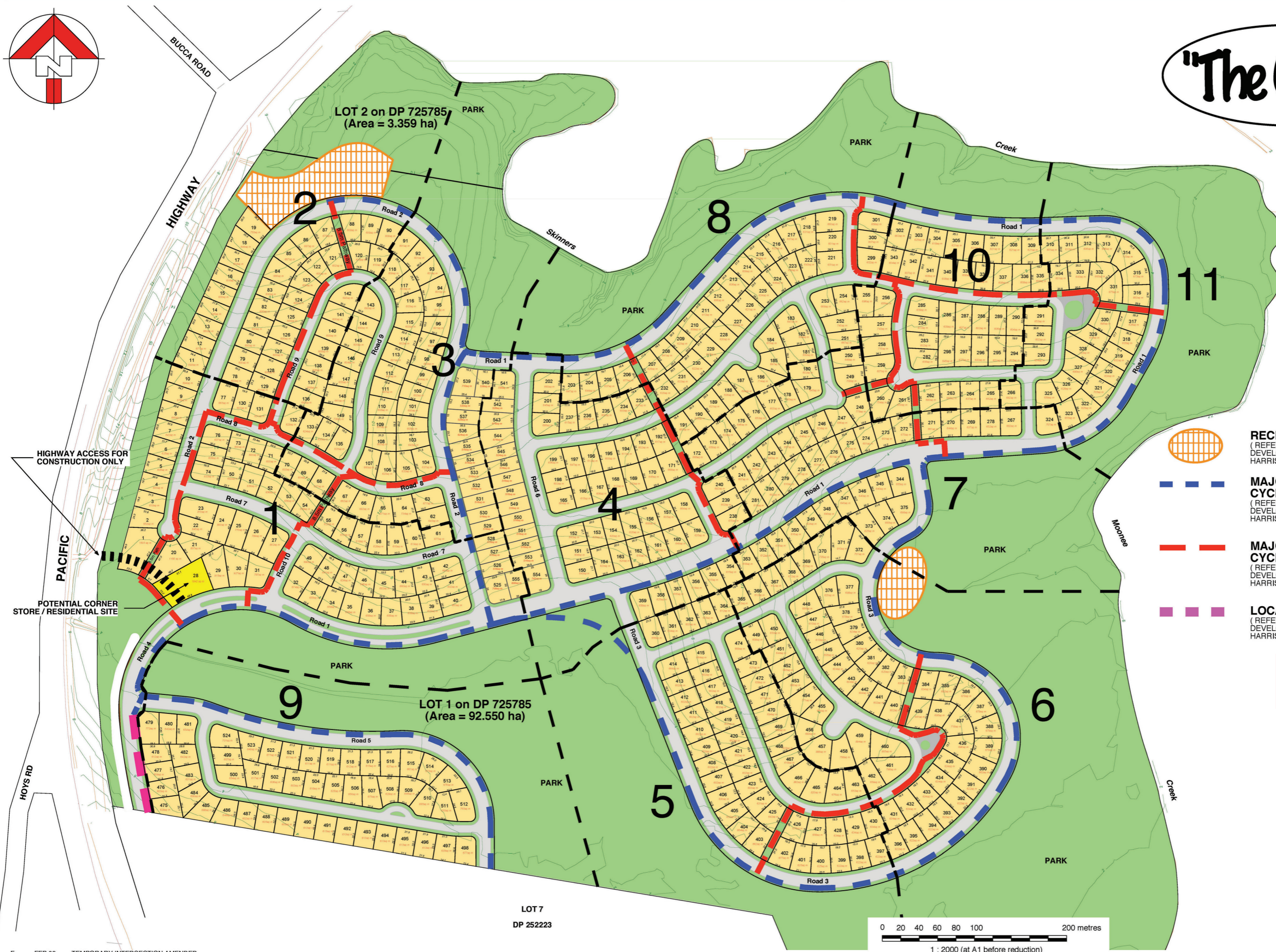


"The Glades"



LEGEND

524	←	LOT NUMBER
620sq m	←	LOT AREA
20.0	←	LOT LENGTH

RECREATION NODE
(REFER PLAN 6 PATH NETWORK & DEVELOPMENT FACILITIES BY ANNE HARRISON LANDSCAPE ARCHITECTS.)

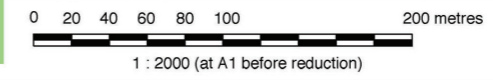
MAJOR PEDESTRIAN / CYCLE (SHAREWAY)
(REFER PLAN 6 PATH NETWORK & DEVELOPMENT FACILITIES BY ANNE HARRISON LANDSCAPE ARCHITECTS.)

MAJOR PEDESTRIAN / CYCLE BOULEVARD
(REFER PLAN 6 PATH NETWORK & DEVELOPMENT FACILITIES BY ANNE HARRISON LANDSCAPE ARCHITECTS.)

LOCAL CONNECTION PATHWAY
(REFER PLAN 6 PATH NETWORK & DEVELOPMENT FACILITIES BY ANNE HARRISON LANDSCAPE ARCHITECTS.)

updated plan
Issued Jan 2018

Stage	No of Lots
1	67
2	40
3	59
4	61
5	51
6	61
7	48
8	48
9	50
10	42
11	28
TOTAL	555



F	FEB 09	TEMPORARY INTERSECTION AMENDED
E	DEC 08	PATH NETWORK AND FACILITIES ADDED
D	MAY 08	TOTAL SITE APPLICATION
C	APRIL 08	ENTRY AMENDED
B	OCT 07	DRAWING TITLE AMENDMENT
A	SEPT 07	CONCEPT PLAN & PRECINCT NOTED
amdt no.	date	amendment

DISCLAIMER: This is a preliminary concept plan prepared by Auspacific Engineers Pty Ltd ("the consultant"). The concept plan has been prepared by the Consultant for the benefit of the entity to which it is addressed ("the Client") and is in response to certain instructions and requests given by the Client. The concept plan therefore may only be relied upon by the Client for the purpose for which it has been prepared and for no other purpose. The concept plan does not represent the Consultant's professional advice, but is merely an overview of potential development outcome and as stated is "preliminary" in nature. No third party is entitled to rely upon the information contained in the preliminary report and any definitive advice as to budgets, yields, etc., should be sought directly from the consultant.

PRELIMINARY LOT LAYOUT



AUSPACIFIC ENGINEERS PTY LTD
development consultants, civil, structural and hydraulic engineers

3 / 20 Nerang Street
NERANG QLD 4211
T 07 5596 5377
F 07 5596 3443
E auspacifik@austarnet.com.au

scales	AS SHOWN
design	RKH
drawn	JM
date	NOV 2006
signed	

client	THE ROTHWELL BOYS PTY LTD		04-1600	
project	PROPOSED RESIDENTIAL SUBDIVISION MOONEE BEACH COFFS HARBOUR		dwg no.	amendment
			P1	F