

Notice of Modification

Section 75W of the *Environmental Planning and Assessment Act 1979*

As delegate of the Minister for Planning, I modify the Project Approval referred to in Schedule 1, as set out in Definitions, Schedule 1,2 and 3, and Appendix 1.



Chris Wilson
Executive Director
Major Project Assessment

Sydney

30 SEPTEMBER

2010

SCHEDULE 1

Project Approval:

06_0239

In respect of:

Project application 06_0239 made by ThaQuarry Pty Ltd & ACN114 843 453 Pty Ltd, in relation to Lot 10 DP 241 859, Lot W DP 419 612, Lot 1 DP 400697 & Lot 2 DP 262213, Eastern Creek in the Blacktown local government area.

For the following:

Eastern Creek Waste Project.

SCHEDULE 1

Land to which the approval applies

1. Replacing existing Project Approval reference number with new reference number:

06_0139

Land to which the approval applies

2. Replacing land to which the project applies to reflect updated land title details as registered by the Land and Property Management Authority:

Land: Lot 1 and Lot 4 in DP 1145808

DEFINITIONS

3. Insert new definition as follows:

Operations Operations are triggered by the receipt of waste on site

SCHEDULE 2

The project approval is modified by:

4. Replacing existing condition 2 with new condition 2 as follows:

Terms of Approval

- 2 The Proponent shall carry out the project generally in accordance with the:
 - a) EA;
 - b) Statement of Commitments
 - c) Site plan and building elevation drawings at Appendix 1;
 - d) Modification application 06_0239 Mod 1 with supporting document titled *Light Horse Business Centre, Environmental Assessment Report: Project Modification* prepared by Light Horse Business Centre, dated August 2010 and Additional Information, dated 6.9.2010 and 13.9.2010; and
 - e) conditions of this approval.

5. Insert new condition 9a and 9b directly after condition 9:

- 9a Construction works associated with the weighing silos, and conveyor and chute system shall be:
 - a) the subject of appropriate certification from a qualified geotechnical and civil engineers; and
 - b) in accordance with the relevant Australian Standards.

- 9a No temporary structures such as demountable sheds or shipping containers are to be used as a substitute for any approved permanent structure. This does not prevent the use of demountable structures on site during construction.

6. Insert new condition 15 and 16 directly after condition 14:

- 15 Where this approval requires the Proponent to prepare a plan, strategy, study, or program in consultation with a specified agency, the Proponent shall:
 - a) provide a draft of the plan, strategy, study, or program to the relevant agency for comment/endorsement; and

- b) amend the draft to take account of the comments provided by the agency, if any.
- 16 Where this approval requires the Proponent to submit a plan, strategy, study, or program to the Director-General or an agency for approval, the Proponent is required to obtain written approval from the Director-General or agency.

SCHEDULE 3

7. Insert new condition 3a directly after condition 3:

3a The Proponent shall ensure that at no time is asbestos waste (as defined in the POEO Act) permitted to be placed in the conveyor/chute system for conveyance to the base of the landfill.

8. Insert new condition 16a and 16b directly after condition 16:

16a The Proponent shall prepare detailed design plans for the conveyor/chute system. These plans shall:

- a) be prepared by a suitably qualified engineer in consultation with the DECCW;
- b) be submitted to the Director-General for approval prior to the commencement of construction;
- c) include the dimensions and gradients of the conveyor and chute;
- d) include a fully enclosed conveyor/chute system;
- e) include a waste drop height of no more than 3 metres between the end of the sock and the base of the quarry;
- f) incorporate fine mist sprays at the discharge end of the chute to minimise dust; and
- g) incorporate maintenance access points.

16b The Proponent shall prepare a Conveyor and Chute System Maintenance and Management Plan. The Plan shall:

- a) be submitted to the Director-General for approval prior to the commencement of operation;
- b) include a maintenance schedule;
- c) detail contingency measures in the event that the system breaks down, or is not coping with the intended quantities of waste; and
- d) detail contingency measures to remove asbestos waste from the system should it be detected.

9. Insert new condition 31a directly after condition 31:

31a The Proponent shall ensure that each green waste bay has an individual cover and aerobic equipment fitted to reduce odour and the generation of leachate.

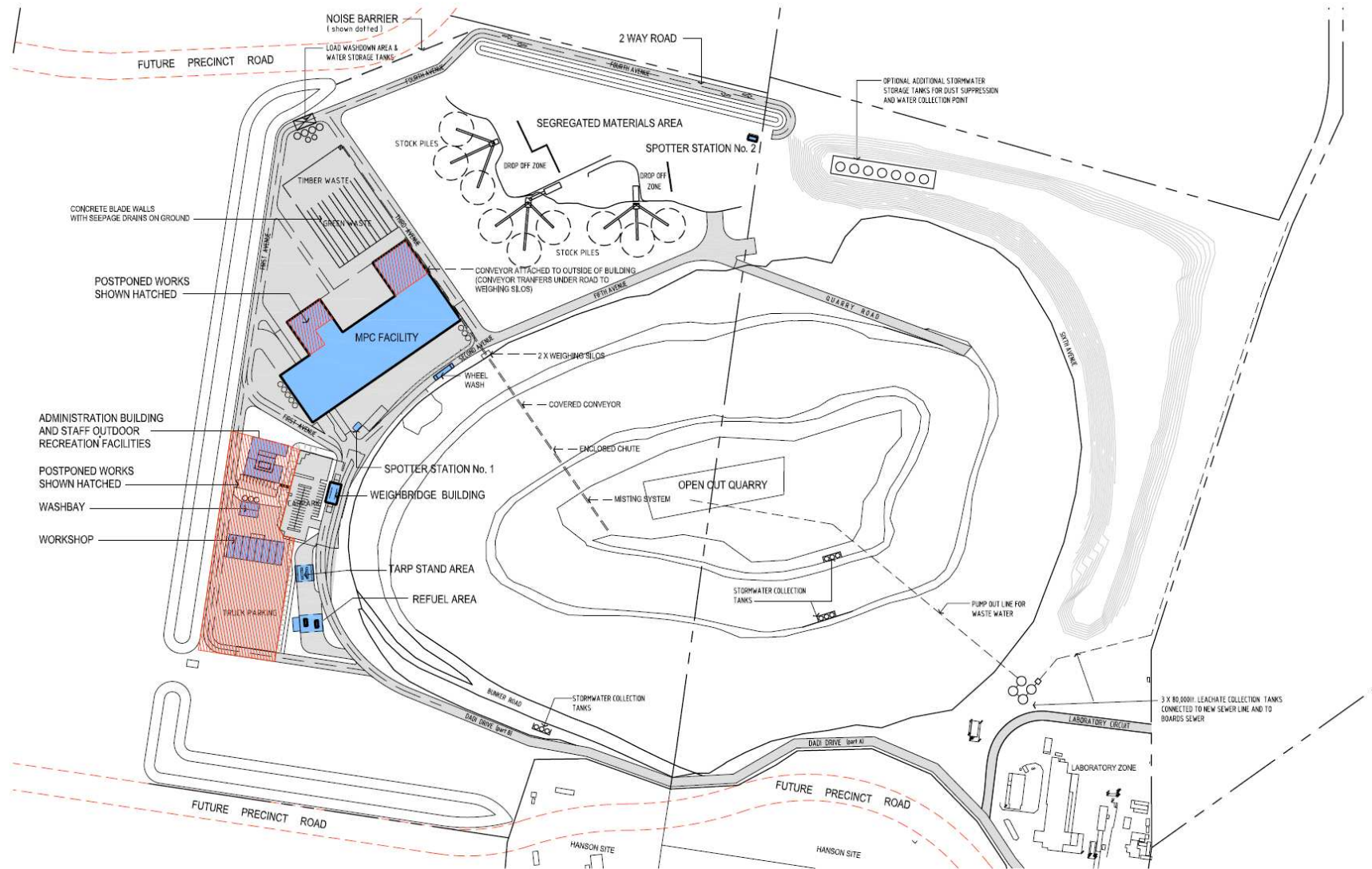
10. Insert new condition 39a directly after condition 39:

39a Operating hours of the conveyor and chute system are to be restricted to the facility's operational hours as defined in condition 39 of Schedule 3.

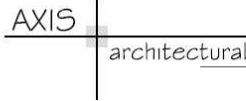
APPENDIX 1

11. Replacing existing Site Plan in Appendix 1 with new Site Pan.

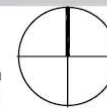
APPENDIX 1 – Site Plan



LIGHT HORSE BUSINESS CENTRE
 DADI - MATERIALS PROCESSING FACILITY
 DIAL A DUMP INDUSTRIES
 OLD WALGROVE ROAD, EASTERN CREEK, NSW



2 / 107 Cronulla Street, Cronulla NSW 2230
 p + 02 9523 7858 e + david@axisarchitects.com.au
 nominated architect - David McDonald NSW ARB - 7997



SITE LAYOUT PLAN
 OVERALL SITE

MARCH 2010
 1:3000 scale

090507/ DI-EP-MP A 101 - 8 / A