

THIS DRAWING IS FOR COUNCIL APPROVAL PURPOSES ONLY. IT IS NOT TO BE USED FOR CONSTRUCTION.
 THIS DRAWING IS COPYRIGHT AND CANNOT BE REPRODUCED IN WHOLE OR IN PART OR BY ANY MEANS WITHOUT THE WRITTEN PERMISSION OF BILLBERGIA DESIGN PTY LTD.

DRAWINGS PREPARED BY
BILLBERGIA design PTY LTD
BILLBERGIA GROUP
 SUITE 101, 25 ANGLAS ST, MEADOWBANK NSW 2114
 HOMERIDGE ARCHITECTS
 BEN MICHELL (REG. NO. 6339)

CONSULTING ENGINEERS
 TURNER AND ASSOCIATES
 100 RIVERVIEW DRIVE, SYDNEY NSW 1585
 TURNER AND ASSOCIATES
 BILLBERGIA DESIGN PTY LTD
 BILLBERGIA DESIGN PTY LTD

NO.	DESCRIPTION	DATE	DESIGNED/ISSUED BY
1	ISSUED FOR SUBMISSION 1	06.03.09	TURNER AND ASSOCIATES
2	ISSUED FOR SUBMISSION 2	06.03.09	TURNER AND ASSOCIATES
3	ISSUED FOR SUBMISSION 3	09.01.09	TURNER AND ASSOCIATES
4	ISSUED FOR SUBMISSION 4	11.11.08	TURNER AND ASSOCIATES
5	ISSUED FOR SUBMISSION 5	11.11.08	TURNER AND ASSOCIATES
6	ISSUED FOR SUBMISSION 6	11.11.08	TURNER AND ASSOCIATES

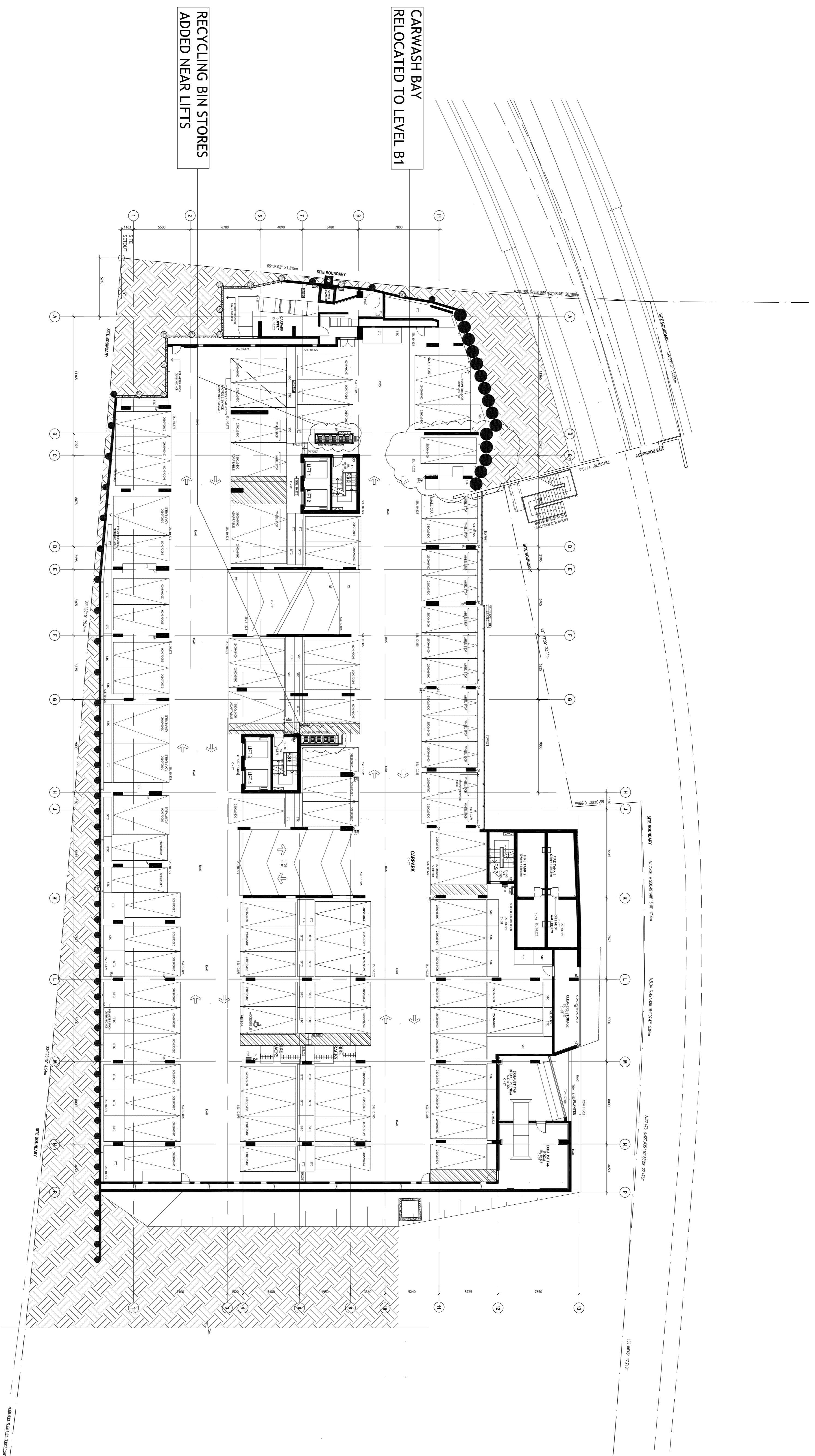
APPLICANT
DEVELOPMENT COMPANY PTY LTD
 MEADOWBANK NSW 2114

PROJECT
SOP 3.1

PROPOSED DEVELOPMENT
 SYDNEY OLYMPIC PARK
 STAGE 3 - SITE 1

SCALE
 1:200 @ A1 1:400 @ A3
 SCALE BAR
 0 2 4 6 8 10 12m

DRAWING TITLE
BASEMENT 02 LEVEL
 PRINT DATE
 06.09.10
 PROJECT ID
 SOP3.1
 DRAWING NO.
 DA04
 ISSUE
 6



- NOTES:
- GARBAGE / RECYCLING / BIN STORAGE RATIONALISED.
 - GARBAGE AT GROUND FLOOR ONLY (AT BASE OF CHUTES).
 - MAIN RECYCLING BIN STORE AT LEVEL B1