

p r o p o s e d

Mt Arthur

UNDERGROUND PROJECT

Appendix 1



EA Form, Project Team and Schedule of Lands

**Submission of
Environmental Assessment (EA)**

under Section 75H of the Environmental Planning and Assessment Act 1979

EA prepared by

Name:

Qualifications:

Address:

Barbara Crossley
B. Nat Res. (Hons)

Umwelt (Australia) Pty Limited
PO Box 838
Toronto 2283

in respect of

Mt Arthur Underground Project

Applicant Name

Applicant Address

Mt Arthur Coal Pty Limited
Thomas Mitchell Drive
Muswellbrook NSW 2333

Land to be developed:
lot no, DP/MPS, vol/fol etc

See Appendix 1 for Schedule of Lands

Proposed Development

Proposed Mt Arthur Underground Project

Environmental assessment

An environmental assessment (EA) is attached

Certification

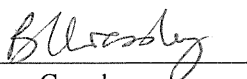
I certify that I have prepared the contents of this environmental assessment and to the best of my knowledge

- it is in accordance with Sections 75E and 75F of the *Environmental Planning and Assessment Act 1979*, and
- it is true in all material particulars and does not, by its presentation or omission of information, materially mislead.

Signature:

Name:

Date:


Barbara Crossley
8 January 2008

Project Team

Umwelt (Australia) Pty Limited – Environmental Assessment Preparation

Barbara Crossley, Director B Nat Res (Hons)	Project Director
John Merrell, Associate B Env Sc	Project Manager
Gabrielle Allan, Environmental Scientist B Env Sc	Project Coordinator
Kristy Munro, Environmental Scientist B Nat Res (Hons)	Baseline data analysis
Peter Jamieson, Director B E (Civil)	Surface Water Assessment
Susan Shield, Water Engineering Manager B E (Hons), M E (Water), MIEAust CPEng	Surface Water Assessment
Garth Greenaway, Environmental Engineer B E Sc (Civil), Adv Dip Eng	Surface Water Assessment
Jan Wilson, Cultural Heritage Manager B A (Hons)	Aboriginal Archaeological Assessment and Historic Heritage Assessment
Mary-Jean Sutton, Senior Archaeologist B A (Hons)	Aboriginal Archaeological Assessment and Historical Heritage Assessment
Jillian Ford, Archaeologist B A (Hons)	Aboriginal Archaeological Assessment
Emma St Pierre, Archaeologist B A (Hons)	Aboriginal Archaeological Assessment
Travis Peake, Ecology Manager B Nat Res (Hons)	Ecological Assessment
Rebecca Vere, Senior Ecologist B Sc (Hons), M Env Mgt	Ecological Assessment
Allison Riley, Senior Ecologist B Sc	Ecological Assessment
Steven Cox, Senior Ecologist B App Sci (Hons)	Ecological Assessment
Liesl Colyer, Ecologist B Sc	Ecological Assessment
Trish Robinson, Ecologist B Env Sc (Hons)	Ecological Assessment
Rebecca Abbott	Drafting and digital terrain modelling
Andrew Goodwin, Environmental Engineer B E (Env)	Digital terrain modelling
Ruslan Batirov, Environmental Engineer Dip Hydrology Eng	Digital terrain modelling
Michael Ong	Drafting
Belinda McLeod	Report editing and document control

Other Specialist investigations

Wilkinson Murray Pty Limited	Noise Assessment
Holmes Air Sciences	Air Quality Assessment
Mackie Environmental Research Pty Ltd	Groundwater Assessment
Mine Subsidence Engineering Consultants	Subsidence Assessment
Coakes Consulting	Socio-economic Assessment
Transport and Urban Planning	Traffic Assessment
SEE Sustainability Consulting	Greenhouse Gas and Energy Assessment
Weir Phillips	Input to Historic Heritage Assessment

Mt Arthur Coal

The assistance of the following Mt Arthur Coal personnel during preparation of this EA is gratefully acknowledged.

Matt Cooper	Project Director
Paul O'Grady	Underground Project Technical Services Manager
Carl Bagnall	Environment & External Affairs Manager
Narelle Wolfe	Community Relations Superintendent
James Knowles	Underground Project Senior Geologist
James Moore	Underground Project Principal Processing Engineer
Jacques Abrahamse	Underground Project Development Manager

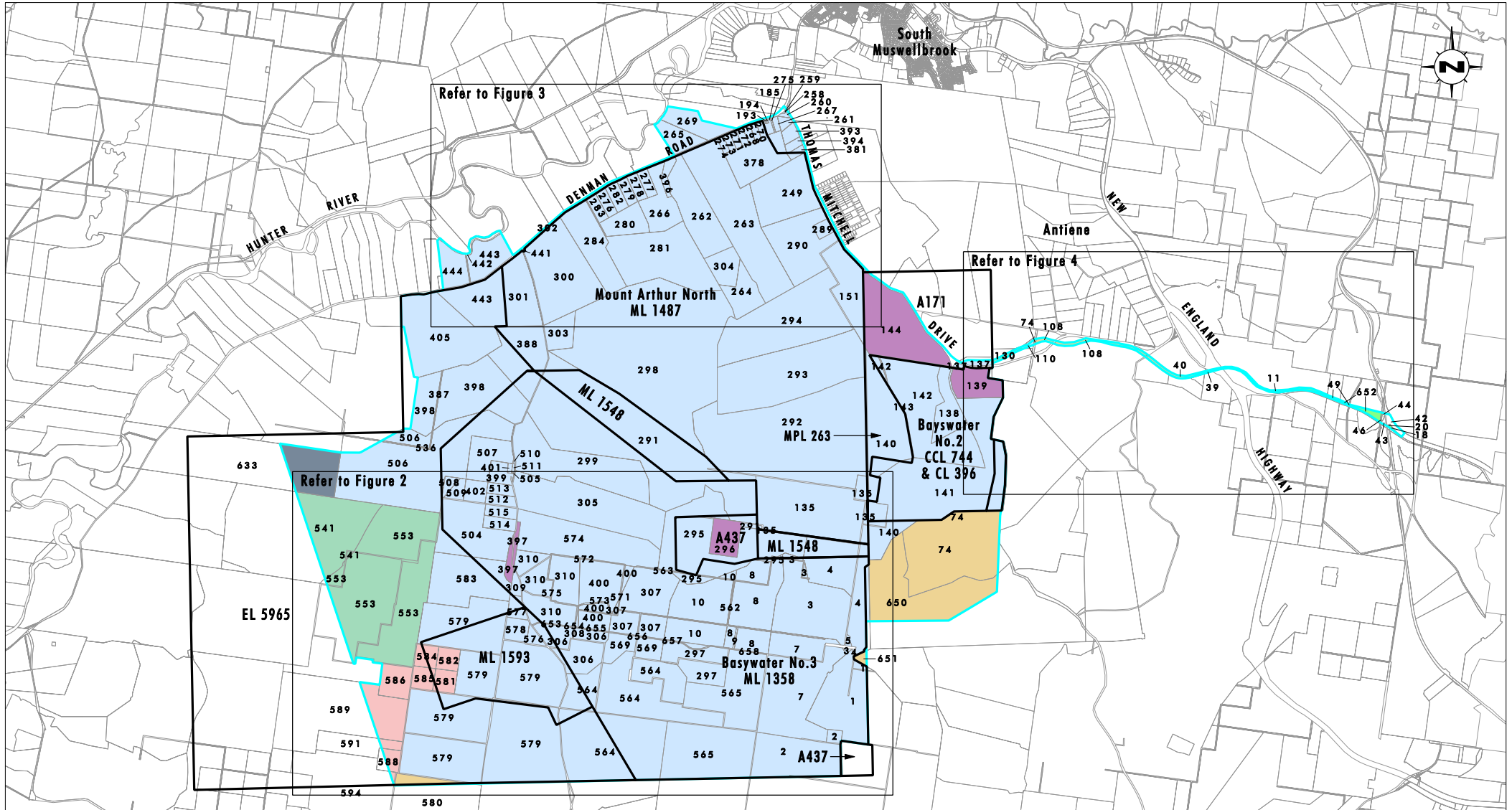
**Schedule 1 - Land Ownership within Mt Arthur Underground Project
Application Area**

Property ID	Lot	DP	Owner
1	11	29950	Hunter Valley Energy Coal Limited (Mt Arthur Coal)
2	6	843635	Hunter Valley Energy Coal Limited (Mt Arthur Coal)
3	12	29950	Hunter Valley Energy Coal Limited (Mt Arthur Coal)
4	4	843634	Hunter Valley Energy Coal Limited (Mt Arthur Coal)
5	1	308136	Reference not held
7	10	29950	Hunter Valley Energy Coal Limited (Mt Arthur Coal)
8	6	29950	Hunter Valley Energy Coal Limited (Mt Arthur Coal)
9	2	48776	Hunter Valley Energy Coal Limited (Mt Arthur Coal)
10	5	29950	Hunter Valley Energy Coal Limited (Mt Arthur Coal)
11	46	241179	Macquarie Generation
18	1	238862	Macquarie Generation
20	1	556370	Macquarie Generation
39	1	752486	The State of New South Wales
40	180	812852	Drayton Coal Pty Limited, Anglo Coal (Drayton) Pty Limited
42	1	532672	State Rail Authority of NSW
43	22	241179	Macquarie Generation
44	5	752486	Macquarie Generation
46	44	241179	Macquarie Generation
49	45	241179	Macquarie Generation
74	64	850818	Drayton Coal Pty Limited, Anglo Coal (Drayton) Pty Limited
108	6	701496	Drayton Coal Pty Limited, Anglo Coal (Drayton) Pty Limited
110	115	1078759	Hunter Valley Energy Coal Limited (Mt Arthur Coal)
130	3	701496	Drayton Coal Pty Limited
137	113	1078759	Hunter Valley Energy Coal Limited (Mt Arthur Coal)
135	3	843634	Coal Operations Australia Limited (Mt Arthur Coal)
136	4	701496	Drayton Coal Pty Limited
138	110	727767	Bayswater Colliery Company Pty Ltd (Mt Arthur Coal)
139	10	793428	The State of New South Wales
140	66	850818	Hunter Valley Energy Coal Limited (Mt Arthur Coal)
141	201	842045	Bayswater Colliery Company Pty Ltd (Mt Arthur Coal)
142	63	752449	Bayswater Colliery Company Pty Ltd (Mt Arthur Coal)
143	5	726248	Bayswater Colliery Company Pty Ltd (Mt Arthur Coal)
144	11	632691	The State of New South Wales
151	10	632691	Coal Operations Australia Limited (Mt Arthur Coal)
185	2	515936	Coal Operations Australia Limited (Mt Arthur Coal)
193	1	515936	Coal Operations Australia Limited (Mt Arthur Coal)
194	1	101142	Coal Operations Australia Limited (Mt Arthur Coal)
249	3	27346	Coal Operations Australia Limited (Mt Arthur Coal)
258	111	633293	Coal Operations Australia Limited (Mt Arthur Coal)
259	112	633293	The Council of the Shire of Muswellbrook
260	4	247064	Coal Operations Australia Limited (Mt Arthur Coal)
261	8	27346	Coal Operations Australia Limited (Mt Arthur Coal)

Property ID	Lot	DP	Owner
262	1	27346	Coal Operations Australia Limited (Mt Arthur Coal)
263	2	27346	Coal Operations Australia Limited (Mt Arthur Coal)
264	C	407349	Coal Operations Australia Limited (Mt Arthur Coal)
265	3	387021	Coal Operations Australia Limited (Mt Arthur Coal)
266	121	575515	Coal Operations Australia Limited (Mt Arthur Coal)
267	9	655749	Coal Operations Australia Limited (Mt Arthur Coal)
268	12	27346	Coal Operations Australia Limited (Mt Arthur Coal)
269	2	387021	Coal Operations Australia Limited (Mt Arthur Coal)
270	11	27346	Coal Operations Australia Limited (Mt Arthur Coal)
271	14	27346	Coal Operations Australia Limited (Mt Arthur Coal)
272	13	27346	Coal Operations Australia Limited (Mt Arthur Coal)
273	15	27346	Coal Operations Australia Limited (Mt Arthur Coal)
274	16	27346	Coal Operations Australia Limited (Mt Arthur Coal)
275	1	403081	Coal Operations Australia Limited (Mt Arthur Coal)
276	112	246348	Coal Operations Australia Limited (Mt Arthur Coal)
277	123	575515	Coal Operations Australia Limited (Mt Arthur Coal)
278	122	575515	Coal Operations Australia Limited (Mt Arthur Coal)
279	114	246348	Coal Operations Australia Limited (Mt Arthur Coal)
280	115	246348	Coal Operations Australia Limited (Mt Arthur Coal)
281	13	228159	Coal Operations Australia Limited (Mt Arthur Coal)
282	113	246348	Coal Operations Australia Limited (Mt Arthur Coal)
283	111	246348	Coal Operations Australia Limited (Mt Arthur Coal)
284	2	601359	Coal Operations Australia Limited (Mt Arthur Coal)
289	1	573259	Coal Operations Australia Limited (Mt Arthur Coal)
290	2	573259	Coal Operations Australia Limited (Mt Arthur Coal)
291	2	843634	Hunter Valley Energy Coal Limited (Mt Arthur Coal)
292	604	802124	Coal Operations Australia Limited (Mt Arthur Coal)
293	605	802124	Coal Operations Australia Limited (Mt Arthur Coal)
294	4	390143	Coal Operations Australia Limited (Mt Arthur Coal)
295	607	802124	Coal Operations Australia Limited (Mt Arthur Coal)
296	7003	93323	Department of Lands (Crown)
297	9	29950	Hunter Valley Energy Coal Limited (Mt Arthur Coal)
298	1	843634	Coal Operations Australia Limited (Mt Arthur Coal)
299	8	26211	Hunter Valley Energy Coal Limited (Mt Arthur Coal)
300	2	806149	Coal Operations Australia Limited (Mt Arthur Coal)
301	1	806149	Coal Operations Australia Limited (Mt Arthur Coal)
303	20	550431	Coal Operations Australia Limited (Mt Arthur Coal)
304	A	407349	Coal Operations Australia Limited (Mt Arthur Coal)
305	9	26211	Hunter Valley Energy Coal Limited (Mt Arthur Coal)
306	7	29950	Hunter Valley Energy Coal Limited (Mt Arthur Coal)
307	4	29950	Coal Operations Australia Limited (Mt Arthur Coal)
308	1	47302	Hunter Valley Energy Coal Limited (Mt Arthur Coal)
309	1	29950	Hunter Valley Energy Coal Limited (Mt Arthur Coal)
310	2	29950	Hunter Valley Energy Coal Limited (Mt Arthur Coal)

Property ID	Lot	DP	Owner
378	4	27346	Coal Operations Australia Limited (Mt Arthur Coal)
381	5	27346	Coal Operations Australia Limited (Mt Arthur Coal)
387	3	113689	Hunter Valley Energy Coal Limited (Mt Arthur Coal)
388	1	385720	Hunter Valley Energy Coal Limited (Mt Arthur Coal)
393	7	27346	Coal Operations Australia Limited (Mt Arthur Coal)
394	6	27346	Coal Operations Australia Limited (Mt Arthur Coal)
396	124	575515	Coal Operations Australia Limited (Mt Arthur Coal)
397	85	752500	Department of Lands (Crown)
398	2	385720	Hunter Valley Energy Coal Limited (Mt Arthur Coal)
399	1	249536	Hunter Valley Energy Coal Limited (Mt Arthur Coal)
400	3	29950	Coal Operations Australia Limited (Mt Arthur Coal)
401	4	204369	Hunter Valley Energy Coal Limited (Mt Arthur Coal)
402	49	752500	Hunter Valley Energy Coal Limited (Mt Arthur Coal)
405	30	787702	Hunter Valley Energy Coal Limited (Mt Arthur Coal)
441	1	223018	Energy Australia
442	160	722249	The State Of New South Wales
443	159	722249	Coal Operations Australia Limited (Mt Arthur Coal)
444	11	526344	Hunter Valley Energy Coal Limited (Mt Arthur Coal)
504	6	249536	Hunter Valley Energy Coal Limited (Mt Arthur Coal)
505	1	204369	Hunter Valley Energy Coal Limited (Mt Arthur Coal)
506	1	372862	Hunter Valley Energy Coal Limited (Mt Arthur Coal)
507	154	752500	Hunter Valley Energy Coal Limited (Mt Arthur Coal)
508	111	514759	Hunter Valley Energy Coal Limited (Mt Arthur Coal)
509	112	514759	Hunter Valley Energy Coal Limited (Mt Arthur Coal)
510	1	113689	Hunter Valley Energy Coal Limited (Mt Arthur Coal)
511	1	503827	Hunter Valley Energy Coal Limited (Mt Arthur Coal)
512	3	249536	Hunter Valley Energy Coal Limited (Mt Arthur Coal)
513	2	249536	Hunter Valley Energy Coal Limited (Mt Arthur Coal)
514	5	249536	Hunter Valley Energy Coal Limited (Mt Arthur Coal)
515	4	249536	Hunter Valley Energy Coal Limited (Mt Arthur Coal)
536	5	113689	Hunter Valley Energy Coal Limited (Mt Arthur Coal)
541	2	34397	Rosebrook Pty Limited
553	1	34397	Rosebrook Pty Limited
562	3	48776	Hunter Valley Energy Coal Limited (Mt Arthur Coal)
563	4	48776	Hunter Valley Energy Coal Limited (Mt Arthur Coal)
564	9	843635	Hunter Valley Energy Coal Limited (Mt Arthur Coal)
565	7	843635	Hunter Valley Energy Coal Limited (Mt Arthur Coal)
569	8	29950	Coal Operations Australia Limited (Mt Arthur Coal)
571	5	48776	Hunter Valley Energy Coal Limited (Mt Arthur Coal)
572	8	48876	Hunter Valley Energy Coal Limited (Mt Arthur Coal)
573	6	48776	Hunter Valley Energy Coal Limited (Mt Arthur Coal)
574	10	26211	Hunter Valley Energy Coal Limited (Mt Arthur Coal)
575	7	48776	Hunter Valley Energy Coal Limited (Mt Arthur Coal)
576	2	133634	Hunter Valley Energy Coal Limited (Mt Arthur Coal)

Property ID	Lot	DP	Owner
577	1	133634	Hunter Valley Energy Coal Limited (Mt Arthur Coal)
578	166	752503	Hunter Valley Energy Coal Limited (Mt Arthur Coal)
579	21	1018587	Hunter Valley Energy Coal Limited (Mt Arthur Coal)
580	1	1004725	Saddlers Creek Coal Pty Limited
581	71	752500	Marcus Humphrey Wolfgang & Robyn Elizabeth Wolfgang
582	70	752500	Marcus Humphrey Wolfgang & Robyn Elizabeth Wolfgang
583	83	752500	Hunter Valley Energy Coal Limited (Mt Arthur Coal)
584	69	752500	Marcus Humphrey Wolfgang & Robyn Elizabeth Wolfgang
585	68	752500	Marcus Humphrey Wolfgang & Robyn Elizabeth Wolfgang
586	98	752441	Marcus Humphrey Wolfgang & Robyn Elizabeth Wolfgang
588	97	752441	Marcus Humphrey Wolfgang & Robyn Elizabeth Wolfgang
589	102	752441	Marcus Humphrey Wolfgang & Robyn Elizabeth Wolfgang
591	1	752441	Marcus Humphrey Wolfgang & Robyn Elizabeth Wolfgang
594	1	956112	Marcus Humphrey Wolfgang & Robyn Elizabeth Wolfgang
633	4	6090	Philip Richard Burgmann & Margaret Burgmann
650	65	850818	Drayton Coal Pty Limited, Anglo Coal (Drayton) Pty Limited
651	321	625513	Anglo Coal Australia Pty Ltd
652	2	752486	Macquarie Generation
653	1	1090735	Hunter Valley Energy Coal Limited (Mt Arthur Coal)
654	2	1090735	Hunter Valley Energy Coal Limited (Mt Arthur Coal)
655	3	1090735	Hunter Valley Energy Coal Limited (Mt Arthur Coal)
656	4	1090735	Hunter Valley Energy Coal Limited (Mt Arthur Coal)
657	5	1090735	Hunter Valley Energy Coal Limited (Mt Arthur Coal)
658	6	1090735	Hunter Valley Energy Coal Limited (Mt Arthur Coal)
			Part Antiene Railway Station Road
			Part Denman Road
			Part Edderton Road
			Part McDonalds Road
			Part New England Highway
			Part Thomas Mitchell Drive



Base Source: LPI, 2004

0 1 2.5 5km
1:100 000

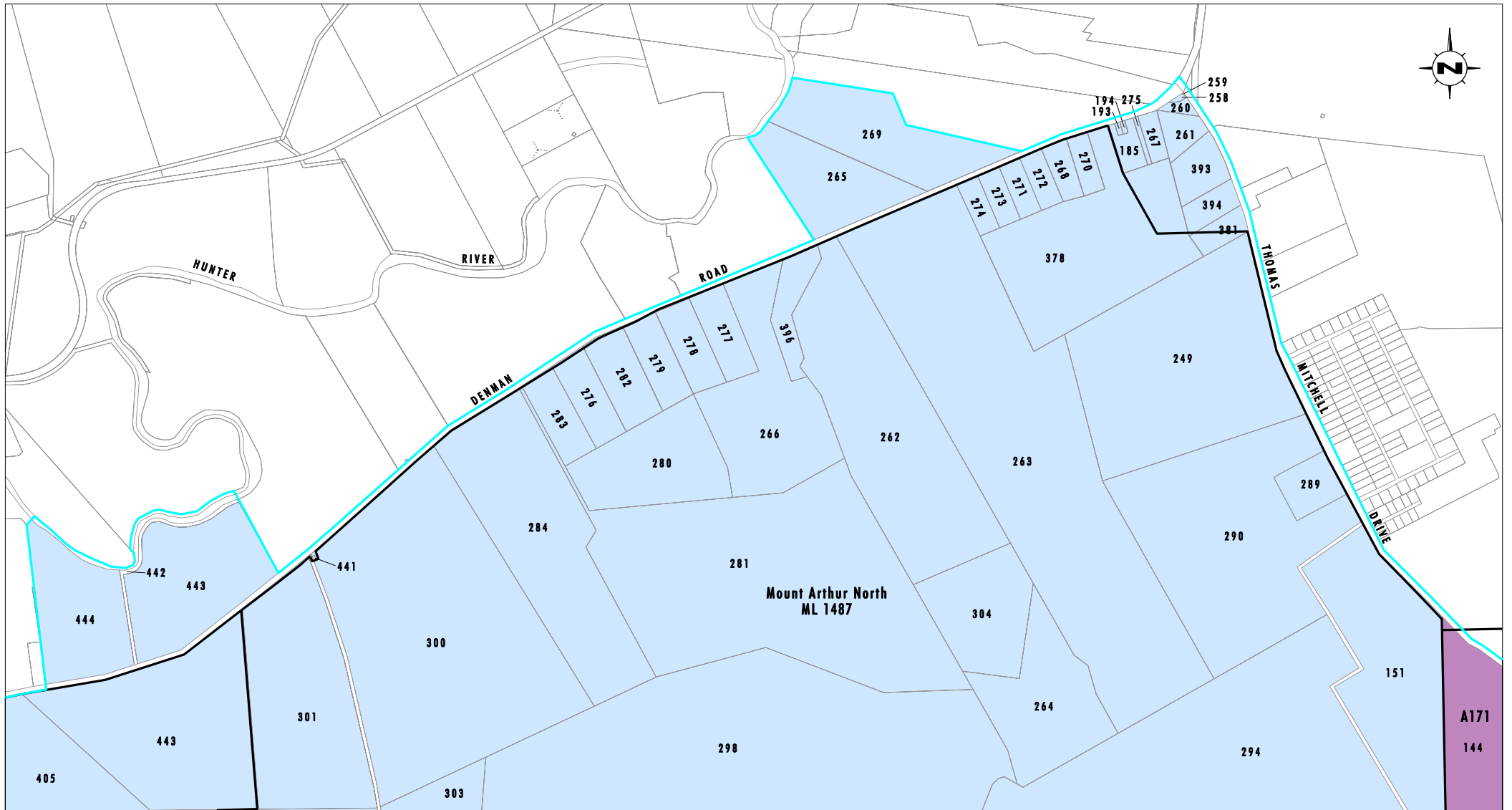
Legend

- Mining and Exploration Lease Boundary
- Project Application Boundary
- Mt Arthur Coal
- Anglo-Drayton Coal
- Crown Land
- Private Landholder 1
- Private Landholder 2
- Private Landholder 3

FIGURE 1

**Land Ownership - Mt Arthur
Underground Project
Application Area**

Land ownership - Mt Arthur Underground Project Application Area



Source: LPI, 2004

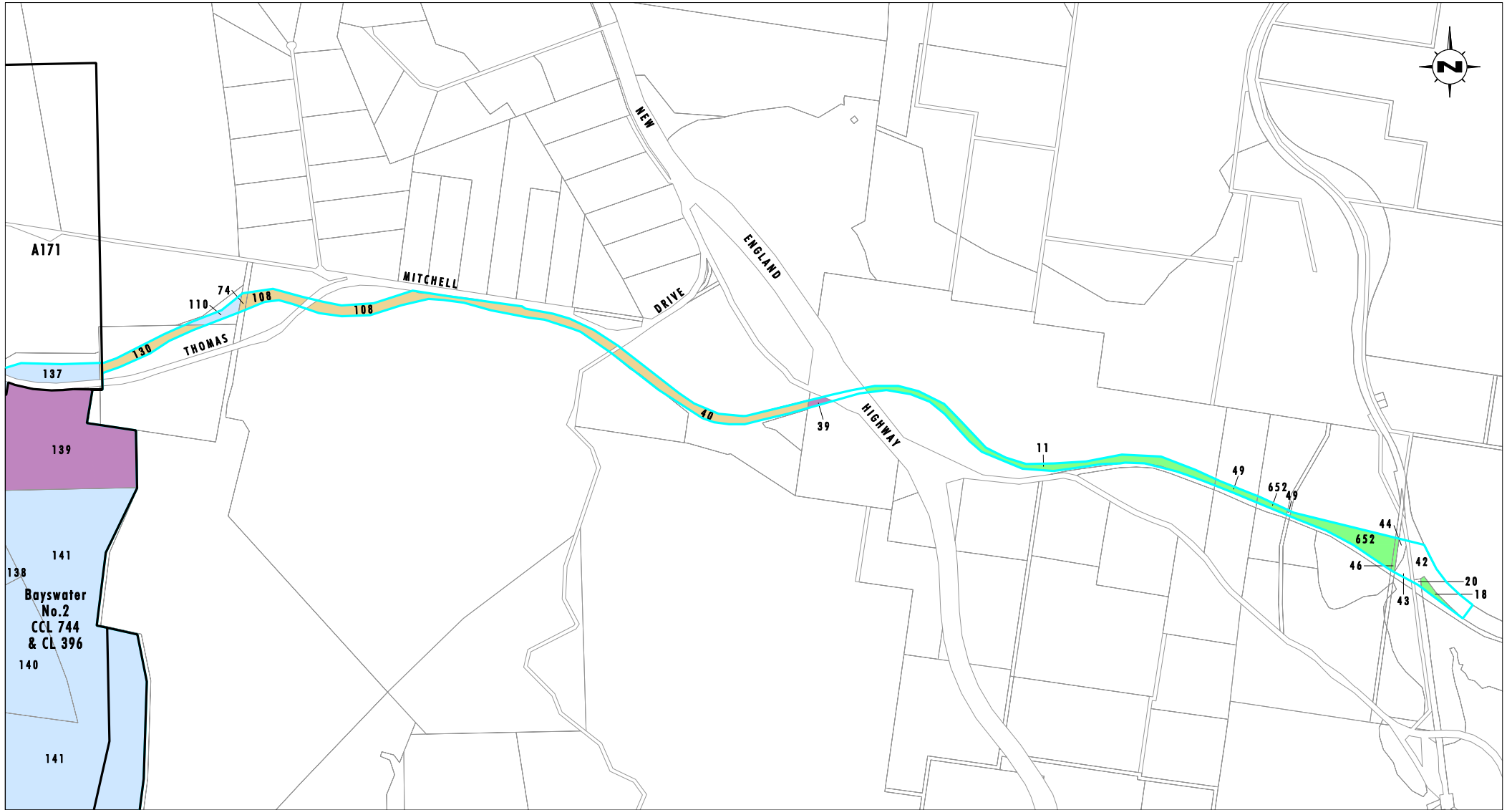
0 0.5 1.0 1.5 km
1:30 000

Legend

- Mining and Exploration Lease Boundary
- Project Application Boundary
- Mt Arthur Coal
- Crown Land

FIGURE 3

**Land Ownership - Mt Arthur
Underground Project
Application Area**



Source: LPI, 2004

0 0.5 1.0 1.5 km
1:30 000

Legend

- Mining and Exploration Lease Boundary
- Project Application Boundary
- Mt Arthur Coal
- Anglo-Drayton Coal
- Crown Land
- Macquarie Generation

FIGURE 4

**Land Ownership - Mt Arthur
Underground Project
Application Area**