

31 October, 2005

Mr Mark Hather

Director - Major Infrastructure Assessment
 Department of Infrastructure, Planning and Natural Resources
 20 Lee St
 SYDNEY NSW 2000

PROPOSED CAPITAL WIND FARM – REQUEST FOR ASSESMENT OF EIS REQUIREMENTS

Reference:

A. Letter to DIPNR re request for EIS Requirements, 3 May 2004

Dear Mr Hather,

This letter is to provide DIPNR with an update on the scope of Capital Wind Farm. This is in response to a request from DIPNR to our development application consultants (Connell Wagner PPI).

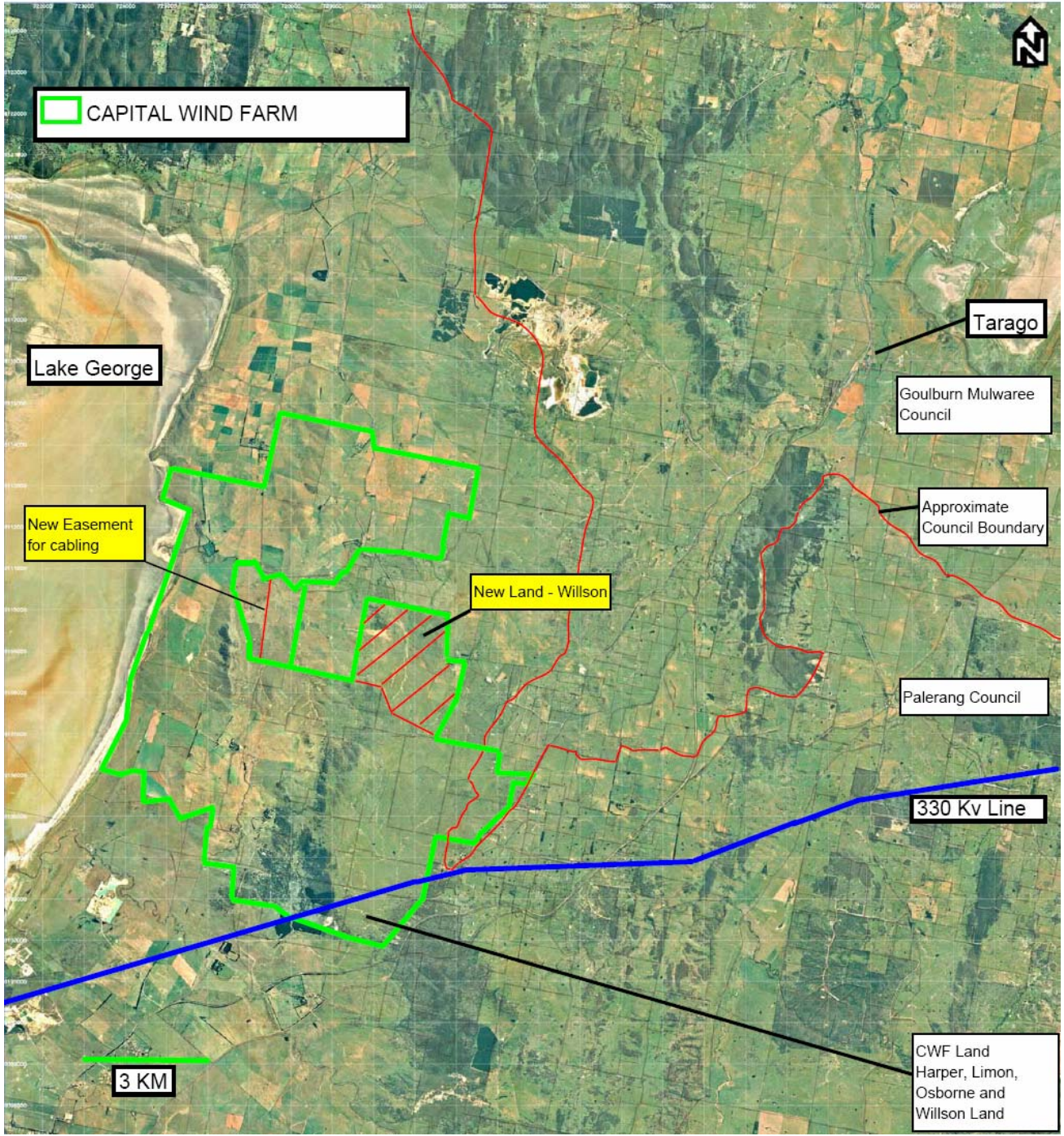
Amendments to the Project Description

The scope of the proposed Capital Wind Farm has been reduced for a number of reasons, primarily the changes are in response to the results of more detailed wind analysis, made possible due to additional monitoring towers in the region and the EIS Studies. The significant changes are as follows:

	Original Scope	Amended Scope
Installed Capacity	200MW	132.3 MW, 63 x 2.1 MW turbines
Geographic Area	15km East to West 20km North to South	7km East to West 11km North to South
Councils	Palerang and Goulburn Mulwaree	Palerang
Project Areas	Lake George, Tarago, Tarago South, Mt Fairy	Lake George (including one new landowner)
Catchment	Partially inside Sydney Catchment	Completely outside Sydney Catchment

Several areas of land near Tarago and Mt Fairy have been abandoned from the project. The project is now located on a single area of contiguous land, east of Lake George. I also believe that the proposed turbine locations and any associated works or infrastructure are located entirely outside the Sydney Catchment Authorities area of responsibility.

The proposed windfarm will still connect to the Transgrid 330kV transmission line that traverses part of the windfarm site. The project is now located entirely within Palerang Council, i.e. turbines and infrastructure are no longer located within the Goulburn-Mulwaree Shire. The new project boundaries can be identified in the aerial photo below.



Land Titles

The project will now only be constructed over the following land titles:

Landowner	Title Details	Shire
Currandooley Pty Ltd	Lot 10 in DP 237079	Palerang Council
	Lot 11 in DP 237079	Palerang Council
	Lot 17 in DP 535180	Palerang Council
Ellendon Pty Ltd	No 414 Book 2073	Palerang Council
	No.56 Book 1886	Palerang Council
	Vol 6429 Fol 101	Palerang Council
Lakelands Pty Ltd	Lot 1 in DP 658449 (easement only)	Palerang Council
Max and Joan Limon	Lot 2 in DP 720169	Palerang Council
	Lot 44 in DP 754919	Palerang Council
	Lot 45 in DP 754919	Palerang Council
Michael Osborne Rassey Pty Ltd	Lot 5 in DP 837873	Palerang Council
	Lot 76 in DP 754919	Palerang Council
	Lot 78 in DP 754919	Palerang Council
	Lot 79 in DP 754919	Palerang Council
Ian and Robert Willson	Lot 48 in DP 754877	Palerang Council
Marie Osborne	Lot45 in DP754877 (easement only)	Palerang Council

As explained, the bulk of any changes to the scope of the project are in reducing the geographic area and installed capacity of the project, however a small parcel of land has been included in the project area (Willson land). This land is extensively cropped and grazed and has no particular areas of sensitivity (as will be evident in the EIS).

The EIS is now nearing completion and we anticipate contacting you shortly to arrange a time to conduct a pre lodgement briefing. Please contact myself if you have any queries regarding this update or other related matters.

Yours sincerely,


David Griffin
CEO
dgriffin@rpv.com.au