

**COALPAC PTY. LIMITED  
ACN 003 558 914**

**ENVIRONMENTAL ASSESSMENT**

**FIGURES 1 TO 7**

**FOR PROPOSED EXTENSION OF INVINCIBLE  
OPEN CUT MINE AND REHABILITATION  
ACTIVITIES.**

**CULLEN BULLEN N.S.W.**

**Prepared By  
Craven, Elliston & Hayes (Lithgow) Pty. Limited  
March 2006**

**Figures**

- Figure 1      Locality Plan
- Figure 2      Section of Lithgow Seam
- Figure 2a     Section of Irondale Seam
- Figure 3      of Open Cut Mining Area Showing Mining Lease
- Figure 4      Coalfields of NSW
- Figure 5      Exploratory Boreholes
- Figure 6      Open Cut Proposed Mine Sequences
- Figure 7      Proposed Open Cut Showing Adjacent  
Underground Mine Workings

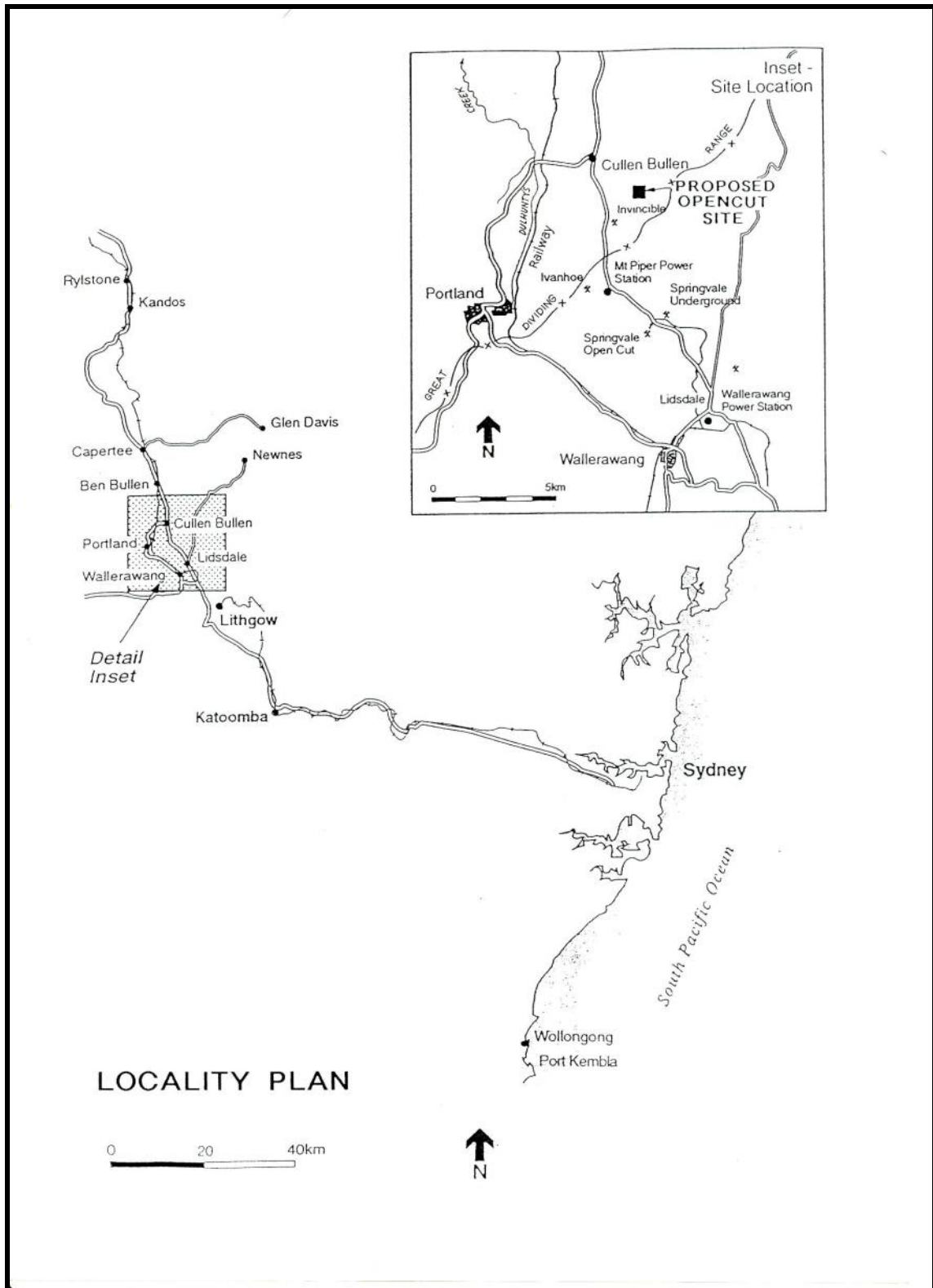
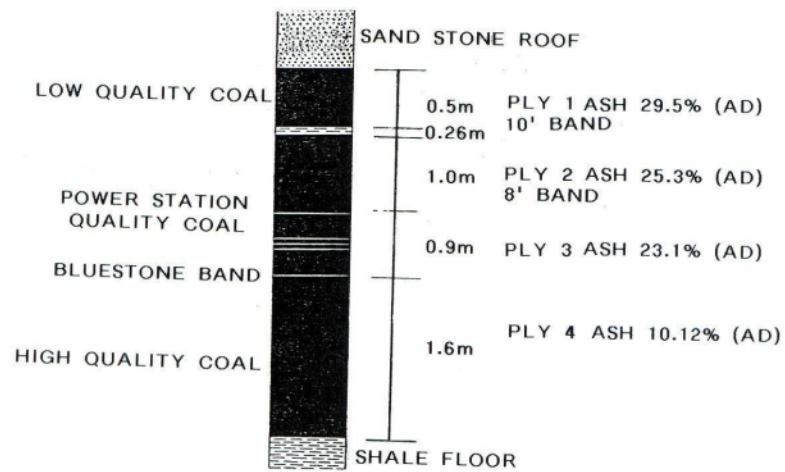


Figure 1 Locality Plan

SECTION OF LITHGOW SEAM AT  
INVINCIBLE COLLIERY



**Figure 2 Lithgow Seam Section**

TYPICAL  
SECTION OF IRONDALE SEAM  
AT INVINCIBLE COLLIERY

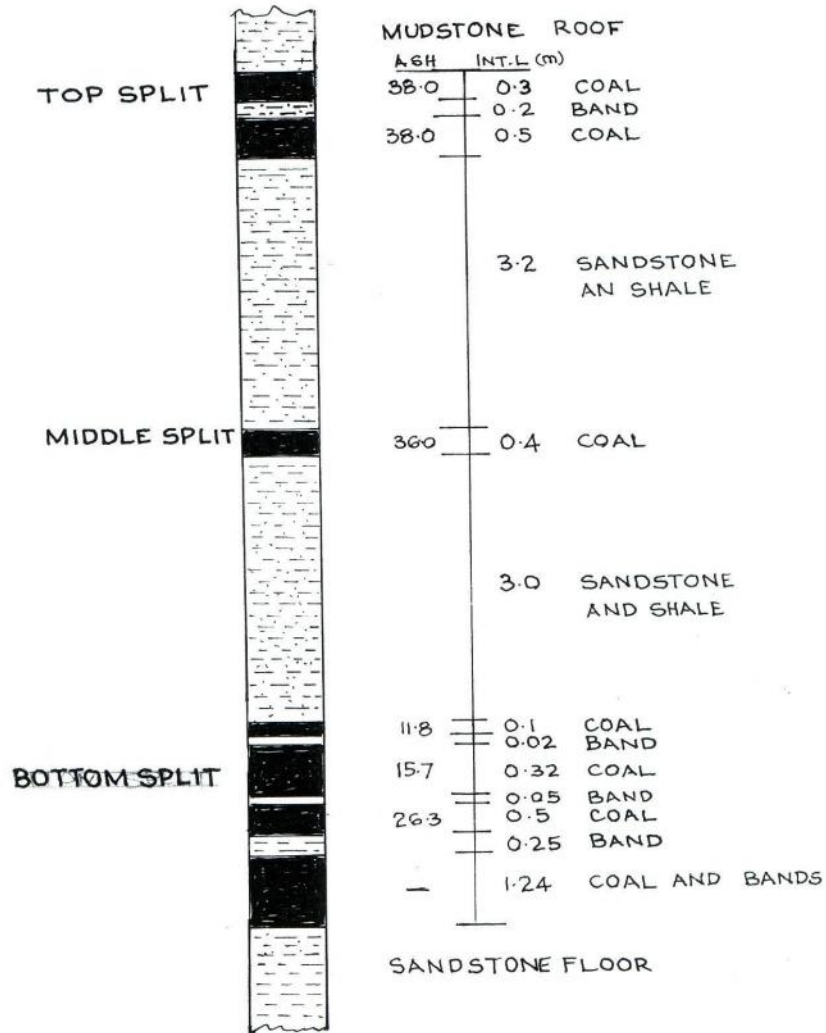


Figure 2a Irondale Seam Section



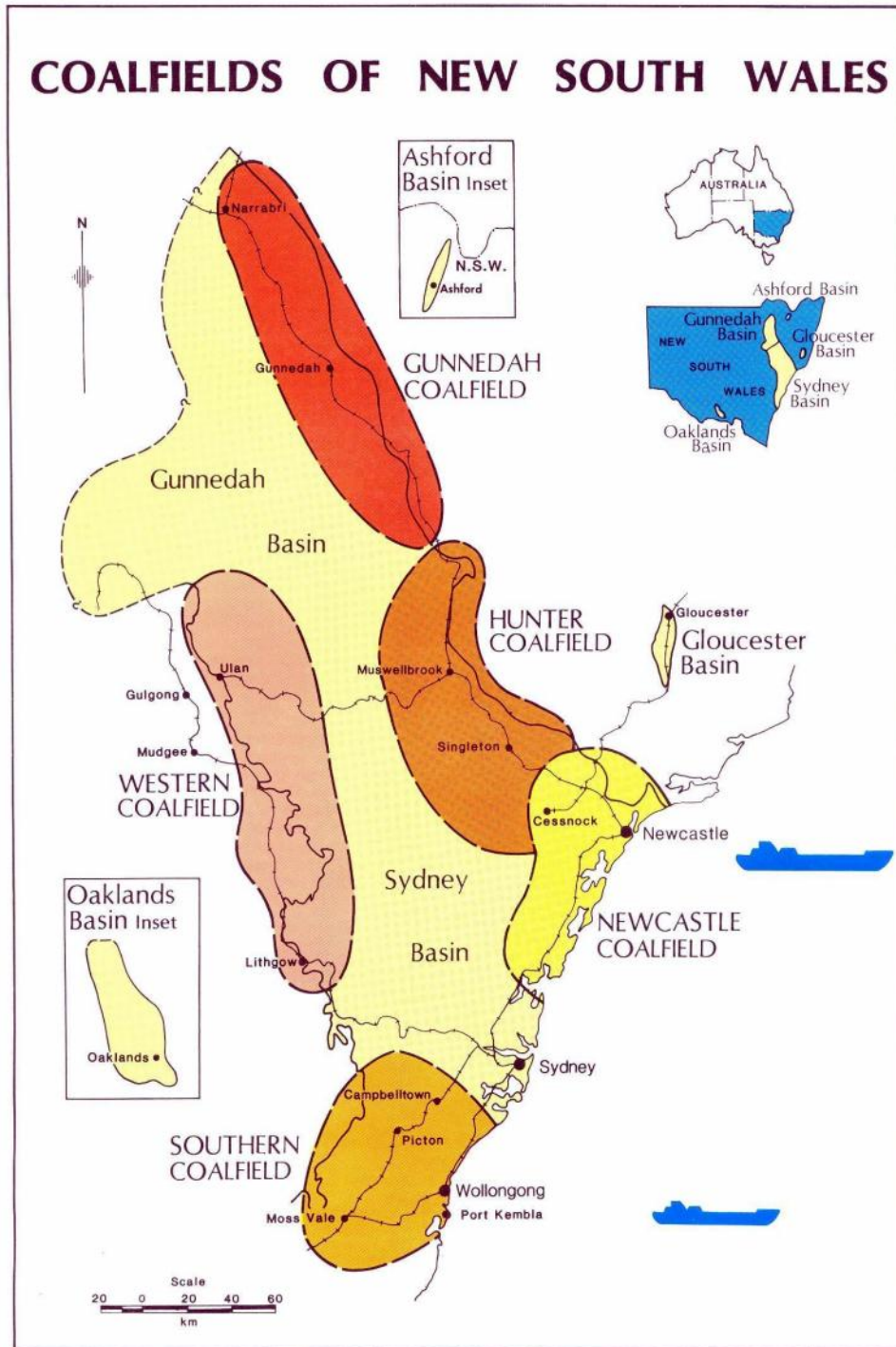


Figure 4 Coalfields of New South Wales

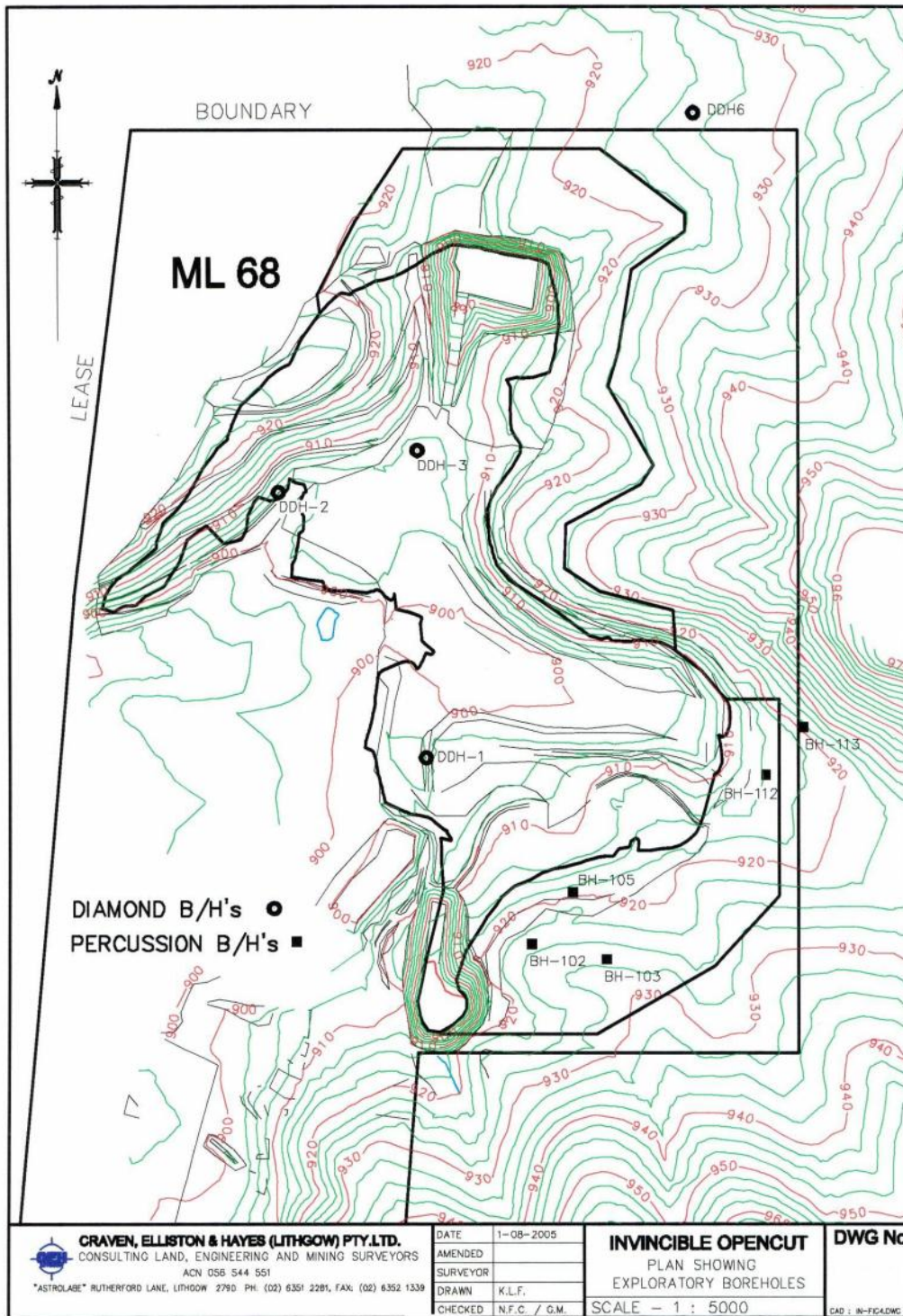


Figure 5 Exploratory Boreholes

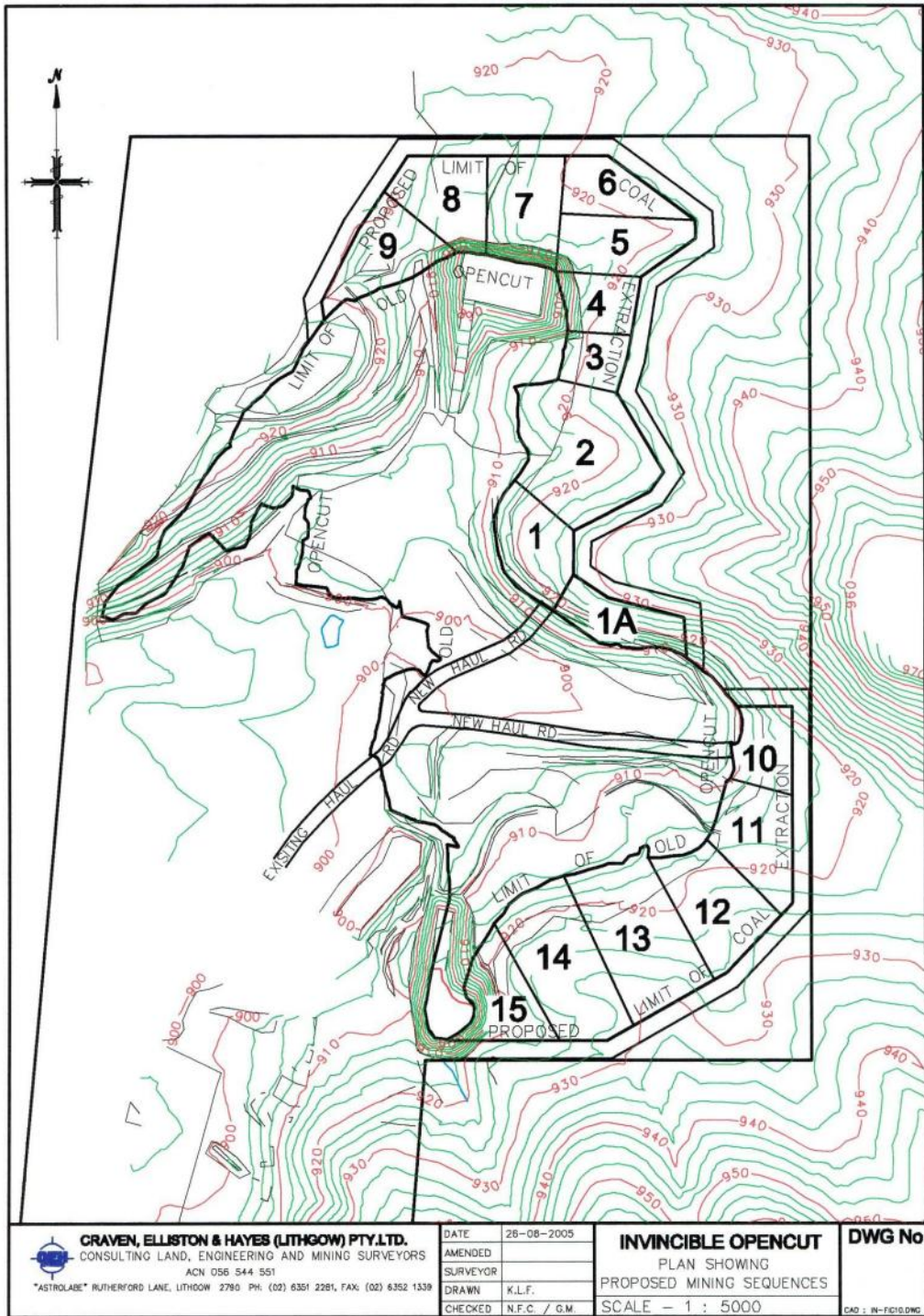


Figure 6 Open Cut Proposed Mine Sequences.

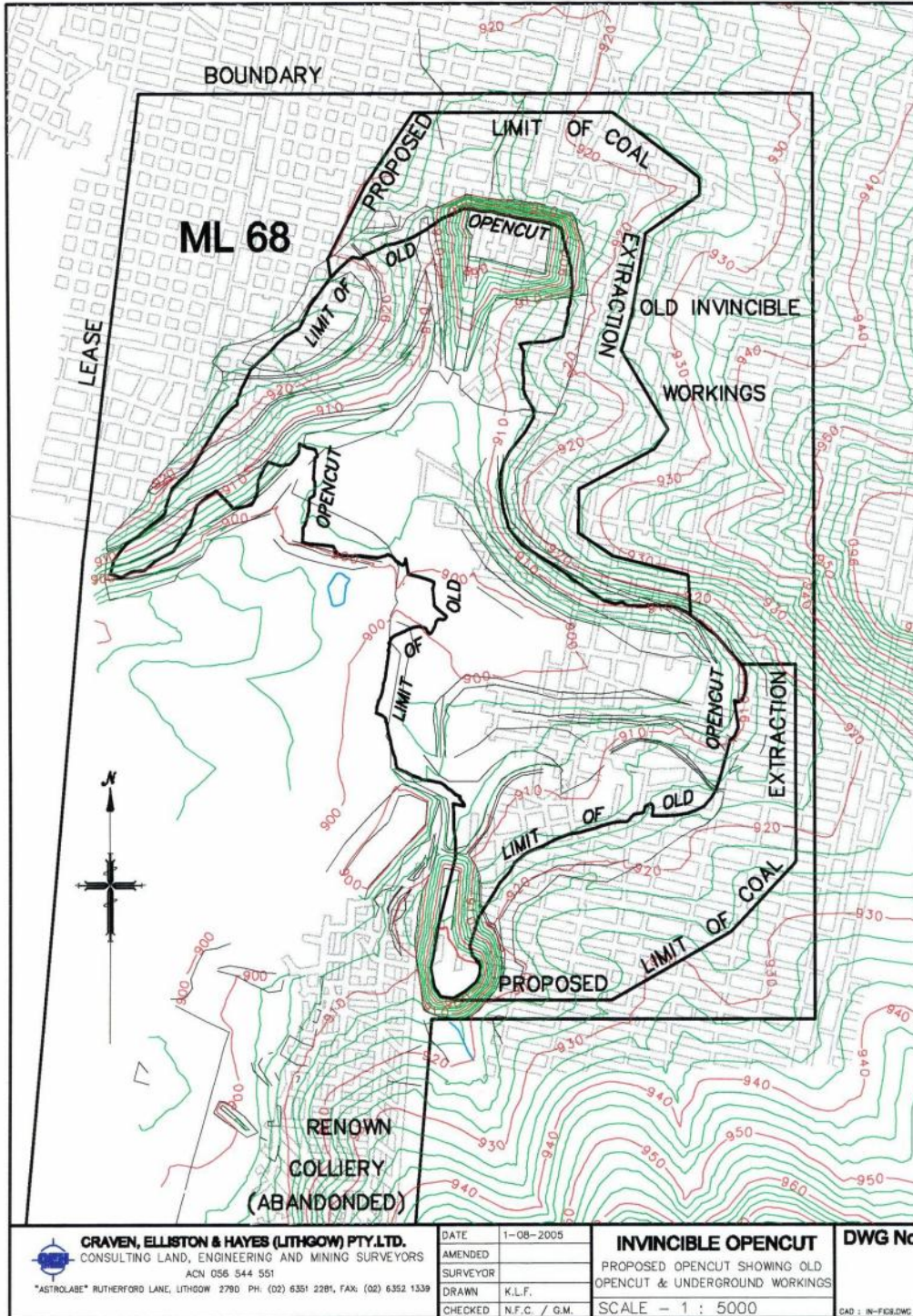


Figure 7 Proposed Open Cut Showing Adjoining Underground Workings