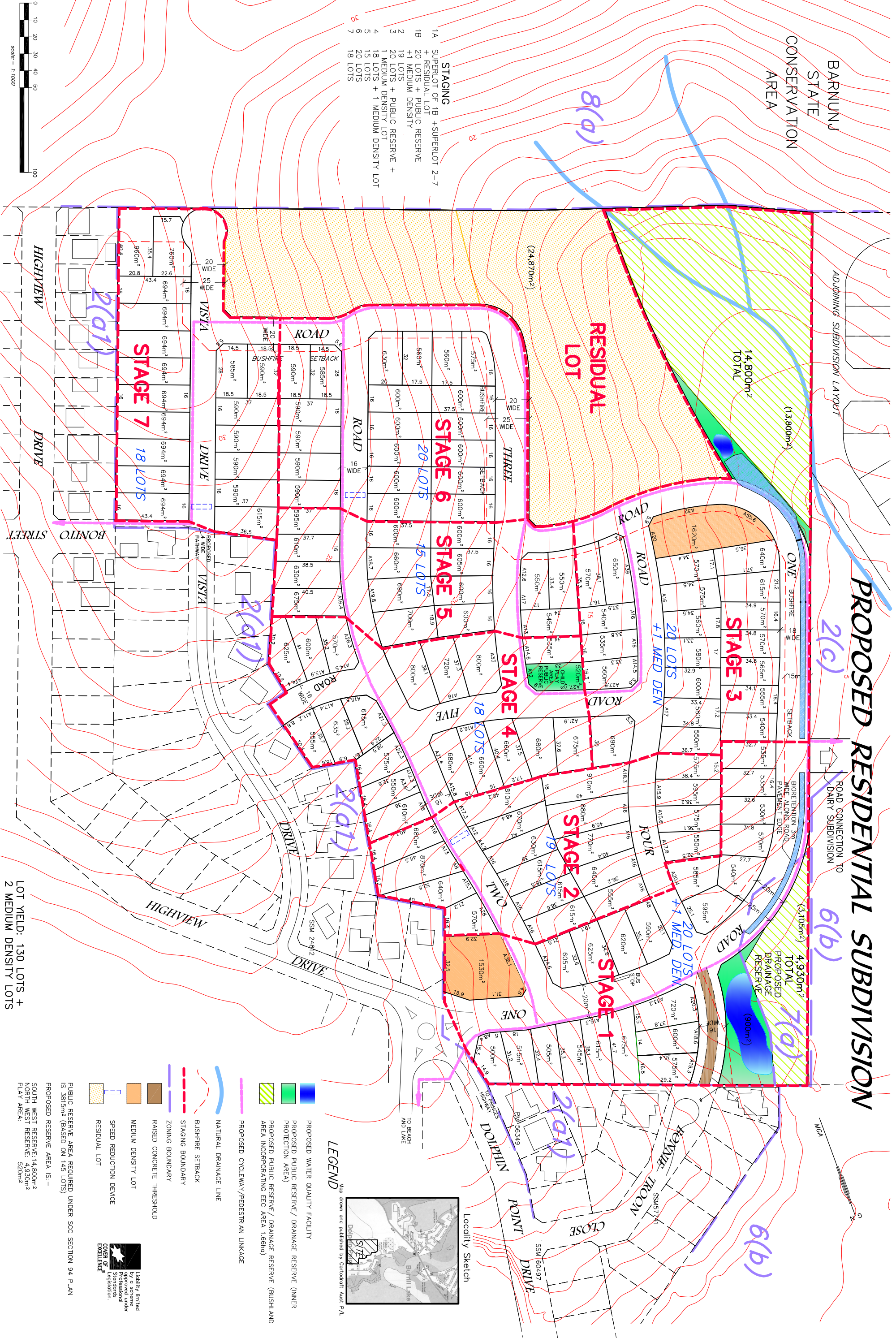


# PROPOSED RESIDENTIAL SUBDIVISION

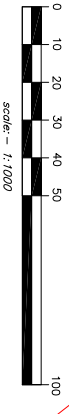
BARNUNJ STATE CONSERVATION AREA

ADJOINING SUBDIVISION LAYOUT

ROAD CONNECTION TO DAIRY SUBDIVISION



- 1A SUPERLOT OF 1B + SUPERLOT 2-7 + RESIDUAL LOT
- 1B 20 LOTS + PUBLIC RESERVE +1 MEDIUM DENSITY
- 2 20 LOTS + PUBLIC RESERVE + 1 MEDIUM DENSITY LOT
- 3 18 LOTS + 1 MEDIUM DENSITY LOT
- 4 15 LOTS
- 5 20 LOTS
- 6 20 LOTS
- 7 18 LOTS



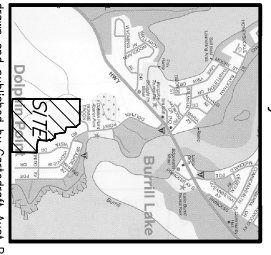
RATIO:		DATE:	
1 :	1000 (A1)	DESIGN:	AS/DS
1 :	2000 (A3)	DRAWN:	MP
DATE OF PLAN: OCTOBER 2008		CHECKED:	MAP

REVISION:		BY:	DATE:
1	FONDS AMENDED, BIOPRETENTION ADDED	MP	20/10/08
2	MEDIUM DENSITY / PUBLIC RESERVE ALTERED	MP	30/10/08

PLAN SHOWING PROJECT APPLICATION FOR FAUNA RECORDS OF LOT 171 DP1081810 AT HIGHVIEW DRIVE, DOLPHIN POINT FOR MALBEC PTY LTD

REF. No.	24163-21	REVISION
SHEET	1	OF 1 SHEETS

- LEGEND**  
Map drawn and published by Caradroit Aust P/L
- PROPOSED WATER QUALITY FACILITY
  - PROPOSED PUBLIC RESERVE / DRAINAGE RESERVE (INNER PROTECTION AREA)
  - PROPOSED PUBLIC RESERVE / DRAINAGE RESERVE (BUSHLAND AREA INCORPORATING ECC AREA 1.66ha)
  - PROPOSED CYCLEWAY/PEDESTRIAN LINKAGE
  - NATURAL DRAINAGE LINE
  - BUSHFIRE SETBACK
  - STAGING BOUNDARY
  - ZONING BOUNDARY
  - RAISED CONCRETE THRESHOLD
  - MEDIUM DENSITY LOT
  - SPEED REDUCTION DEVICE
  - RESIDUAL LOT
  - PUBLIC RESERVE AREA REQUIRED UNDER SOC SECTION 94.1 PLAN IS 3815m<sup>2</sup> (BASED ON 145 LOTS)
  - PROPOSED RESERVE AREA IS -
  - SOUTH WEST RESERVE: 14,800m<sup>2</sup>
  - NORTH WEST RESERVE: 4,930m<sup>2</sup>
  - PLAY AREA: 520m<sup>2</sup>



allen, price & associates  
land and development consultants  
75 plunkett street, nowra, nsw, 2541  
phone: (02) 4421 6544 fax: (02) 4422 1821 dx: 5310  
consultants@allenprice.com.au www.allenprice.com.au

LOT YIELD: 130 LOTS + 2 MEDIUM DENSITY LOTS

4,930m<sup>2</sup> TOTAL PROPOSED DRAINAGE RESERVE (900m<sup>2</sup>)

14,800m<sup>2</sup> TOTAL

(13,800m<sup>2</sup>)

2(c)

6(b)

7(a)

8(d)

RESIDUAL LOT

STAGE 6  
20 LOTS

STAGE 5  
15 LOTS

STAGE 4  
18 LOTS

STAGE 3  
20 LOTS

STAGE 2  
19 LOTS

STAGE 1  
130 LOTS

STAGE 7  
18 LOTS

STAGING

RESIDUAL LOT