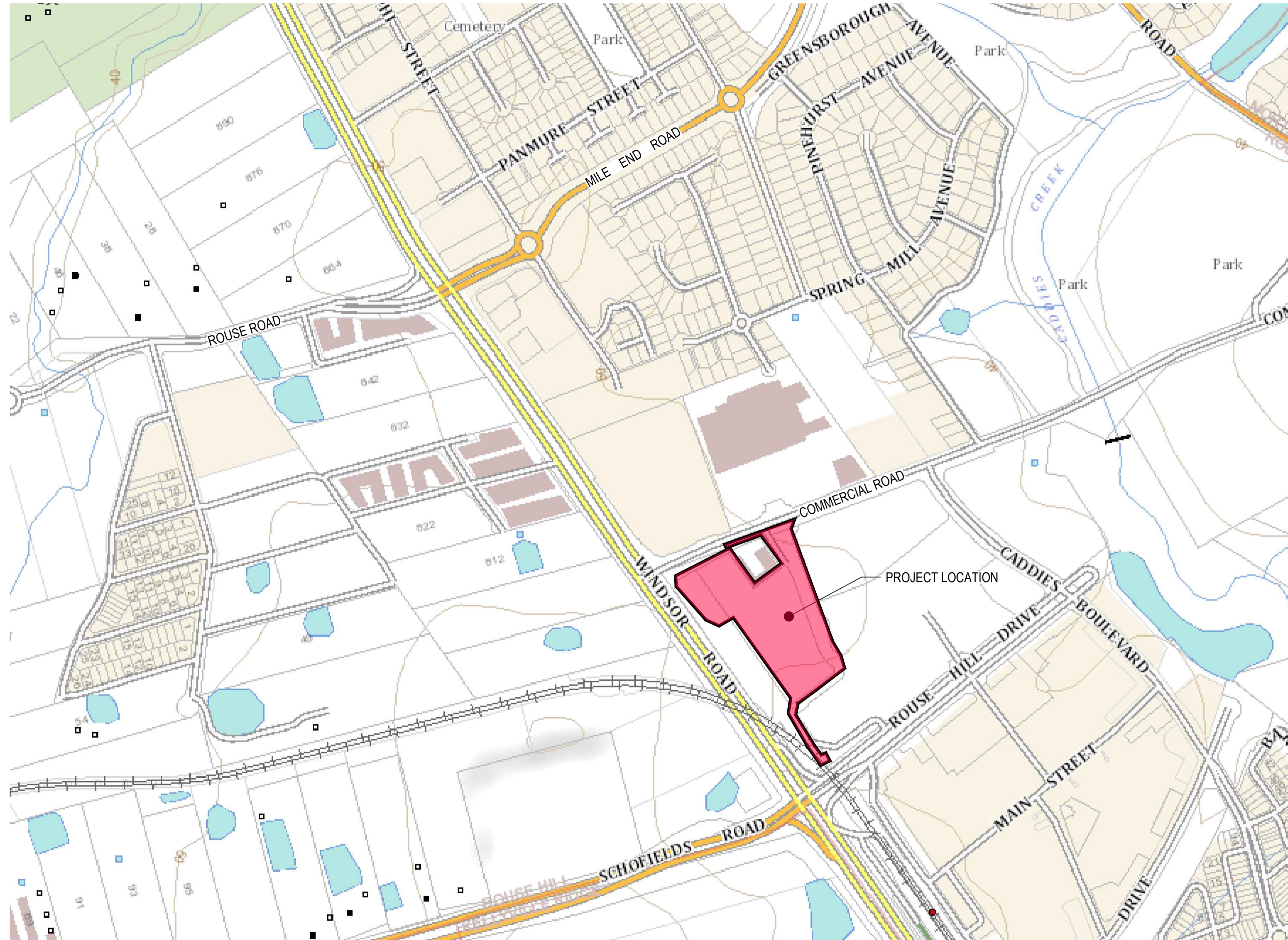


NEW ROUSE HILL HOSPITAL - MAIN WORKS

CORNER OF COMMERCIAL AND WINDSOR RD, ROUSE HILL, NSW

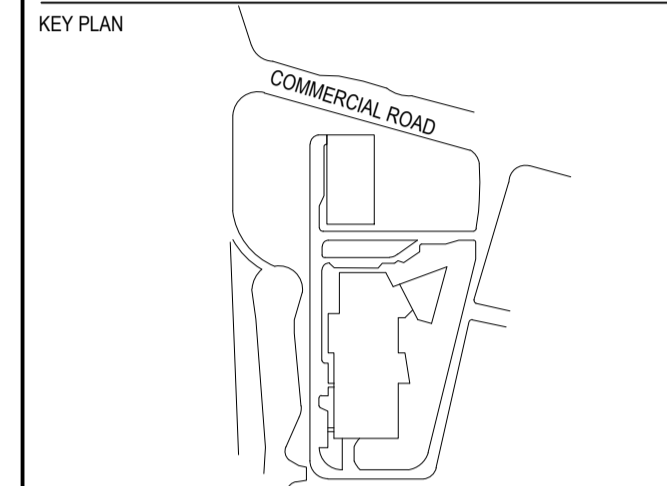
SSDA



LOCALITY PLAN
NOT TO SCALE

MAP DATA @ SIXMAPS 2024

DRAWING INDEX	
DRAWING NUMBER	DRAWING TITLE
130486-ACOR-CV-DWG-015001	COVER SHEET AND DRAWING INDEX
130486-ACOR-CV-DWG-015101	LEGENDS SHEET
130486-ACOR-CV-DWG-015102	NOTES SHEET 1
130486-ACOR-CV-DWG-015103	NOTES SHEET 2
130486-ACOR-CV-DWG-015201	KEY PLAN
130486-ACOR-CV-DWG-045001	BULK EARTHWORKS PLAN
130486-ACOR-CV-DWG-045101	BULK EARTHWORKS SECTIONS - SHEET 1
130486-ACOR-CV-DWG-045102	BULK EARTHWORKS SECTIONS - SHEET 2
130486-ACOR-CV-DWG-055001	GENERAL ARRANGEMENT PLAN - SHEET 1
130486-ACOR-CV-DWG-055002	GENERAL ARRANGEMENT PLAN - SHEET 2
130486-ACOR-CV-DWG-055003	GENERAL ARRANGEMENT PLAN - SHEET 3
130486-ACOR-CV-DWG-055004	GENERAL ARRANGEMENT PLAN - SHEET 4
130486-ACOR-CV-DWG-055005	GENERAL ARRANGEMENT PLAN - SHEET 5
130486-ACOR-CV-DWG-055006	GENERAL ARRANGEMENT PLAN - SHEET 6
130486-ACOR-CV-DWG-065001	ALIGNMENT CONTROL PLAN
130486-ACOR-CV-DWG-065201	TYPICAL ROAD CROSS SECTIONS
130486-ACOR-CV-DWG-065301	ROAD LONGITUDINAL SECTIONS - SHEET 1
130486-ACOR-CV-DWG-065302	ROAD LONGITUDINAL SECTIONS - SHEET 2
130486-ACOR-CV-DWG-065303	ROAD LONGITUDINAL SECTIONS - SHEET 3
130486-ACOR-CV-DWG-065601	TYPICAL ROAD DETAILS
130486-ACOR-CV-DWG-085401	STORMWATER CATCHMENT PLAN
130486-ACOR-CV-DWG-085501	STORMWATER QUALITY - CATCHMENT PLAN
130486-ACOR-CV-DWG-095001	PAVEMENT PLAN
130486-ACOR-CV-DWG-095301	PAVEMENT DETAILS
130486-ACOR-CV-DWG-105001	RETAINING WALL ALIGNMENT - CONTROL PLAN
130486-ACOR-CV-DWG-105201	RETAINING WALL LONG SECTIONS - SHEET 1
130486-ACOR-CV-DWG-105202	RETAINING WALL LONG SECTIONS - SHEET 2
130486-ACOR-CV-DWG-165101	VEHICLE SWEEP PATH PLAN



REV	DESCRIPTION OF CHANGE	DATE	CHECKED	ISSUED
0	SSDA	15.08.2025	RB	GL
2	SSDA	02.02.2026	RB	JR

PRINT IN COLOUR



PROJECT
ROUSE HILL HOSPITAL - MAIN WORKS
CORNER OF COMMERCIAL AND WINDSOR RD, ROUSE HILL, NSW 2155 AUSTRALIA

DRAWING TITLE
SSDA
COVER SHEET AND DRAWING INDEX

Drawn	Designed	Q.A. Check	Q.A. Date
RP/RG	RB	GL	15.08.2025

SCALE
NA PROJECT NUMBER

DRAWING NUMBER
130486-ACOR-CV-DWG-015001 ISSUE
2

PROJECT STATUS
NOT FOR CONSTRUCTION



EXISTING SERVICES LEGEND		
	EXISTING SEWER	
	EXISTING SEWER RISING MAIN	
	EXISTING FIREMAIN	
	EXISTING GAS	
	EXISTING ELECTRICITY	
	EXISTING ELECTRICITY (LV)	
	EXISTING ELECTRICITY (OH)	
	EXISTING ELECTRICITY (HV)	
	EXISTING STORMWATER	
	EXISTING COMMS	
	EXISTING TELSTRA	
	EXISTING WATER	
	EXISTING UNKNOWN SERVICE	

CIVIL LEGEND	
	KERB AND GUTTER
	KERB ONLY
	PRAM RAMP
	WHEEL STOP
	RETAINING WALL
	FINISHED SURFACE CONTOUR MAJOR
	FINISHED SURFACE CONTOUR MINOR
	PERMANENT STEEL BOLLARD - NON-CRASH RATED
	EXTERNAL IMPACT BOLLARD - PAS68 RATED
	GALVANISED POST & RAIL CRASH BARRIER
	EARLY WORKS STORMWATER DRAINAGE LINE
	LOT BOUNDARY
	CONTROL LINE
	TRANSITION KERB HEIGHT FROM 150 TO 0 OVER 1.2m (UNO)
	CONSTRUCTION WORKS BY OTHERS - NOT INCLUDED IN THE SSSA SCOPE.

PAVEMENT LEGEND	
	PAVEMENT TYPE 1 ASPHALTIC ROADWAY PAVEMENT ASSUMED DESIGN HVAG = 5 X 10 ⁵
	DESIGN FINISHED SURFACE LEVEL 40mm THICKNESS ASPHALTIC CONCRETE (AC14) 7mm PRIMER SEAL 150mm COMPACTED THICKNESS BASECOURSE (DGB20) 150mm COMPACTED THICKNESS SUBBASE (DGS40) COMPACTED PROOF-ROLLED SUBGRADE (CBR 4% MIN.)
	PAVEMENT TYPE 2 LOADING DOCK RAMP/OXYGEN TANKER CONCRETE PAVEMENT ASSUMED DESIGN HVAG = 5 X 10 ⁵
	DESIGN FINISHED SURFACE LEVEL 165mm COMPACTED THICKNESS CONCRETE (f _c = 32MPa) WITH SL92 MESH TOP 50 COVER 125mm COMPACTED THICKNESS DGB20 COMPACTED PROOF-ROLLED SUBGRADE (CBR 4% MIN.)
	PAVEMENT TYPE 3 PAVED ROADWAY ASSUMED DESIGN HVAG = 5 X 10 ⁵
	DESIGN FINISHED SURFACE LEVEL 80mm THICK SKID RESISTANT TRI-HEX PAVEMENT 20mm THICK 4:1 SAND CEMENT MORTAR 165mm THICK 32MPa WITH SL82 MESH TOP AND BOTTOM (50 COVER) 125mm THICK DGB20 (98% MMD) COMPACTED PROOF-ROLLED SUBGRADE 95% STANDARD MDD (4% CBR)
	PAVEMENT TYPE 4 FOOTPATH/SHARED PATH
	DESIGN FINISHED SURFACE LEVEL 125mm THICK CONCRETE (f _c =25MPa) WITH SL72 MESH PLACED CENTRALLY 50mm SHARP SAND BLINDING COMPACTED SUBGRADE
	PAVEMENT TYPE 8 MEDIAN/FOOTPATH PAVEMENT DESIGN IS NOT INCLUDED IN THIS DESIGN PACKAGE; HOWEVER, IT FORMS PART OF THE OVERALL PROPOSAL
	PAVEMENT TYPE 9 ASPHALTIC ROAD PAVEMENT DESIGN IS NOT INCLUDED IN THIS DESIGN PACKAGE; HOWEVER, IT FORMS PART OF THE OVERALL PROPOSAL
	PAVEMENT TYPE 10 CONSTRUCTION WORKS BY OTHERS - NOT INCLUDED IN THE SSSA SCOPE.

NORTH POINT



REV	DESCRIPTION OF CHANGE	DATE	CHECKED	ISSUED
0	SSDA	15.08.2025	RB	GL
1	SSDA	28.08.2025	RB	GL
2	SSDA	02.02.2026	RB	JR

REV	DESCRIPTION OF CHANGE	DATE	CHECKED	ISSUED
0	SSDA	15.08.2025	RB	GL
1	SSDA	28.08.2025	RB	GL
2	SSDA	02.02.2026	RB	JR

PRINT IN COLOUR

HDR
Level 24, 25 Martin Place, Sydney NSW, 2000
+61 2 9550 2666 | hdrinc.com
HDR Pty Limited ABN 76 158 075 220 trading as HDR

NSW Health Infrastructure
Health Infrastructure NSW
Level 6, 1 Reserve Road
St Leonards, NSW 2065
T +61 2 9570 9422
www.health.nsw.gov.au

PROJECT
ROUSE HILL HOSPITAL - MAIN WORKS
CORNER OF COMMERCIAL AND WINDSOR RD, ROUSE HILL, NSW 2155 AUSTRALIA

DRAWING TITLE
SSDA
LEGENDS SHEET

Drawn	Designed	Q.A. Check	Q.A. Date
RP	RB	GL	15.08.2025

SCALE: NA PROJECT NUMBER: 130486-ACOR-CV-DWG-015101

DRAWING NUMBER: 130486-ACOR-CV-DWG-015101 ISSUE: 2

PROJECT STATUS: NOT FOR CONSTRUCTION



GENERAL NOTES

- THESE DRAWINGS SHALL BE READ IN CONJUNCTION WITH ALL ARCHITECTURAL AND STRUCTURAL CONSULTANTS DRAWINGS AND SPECIFICATIONS AND WITH SUCH OTHER WRITTEN INSTRUCTIONS AS MAY BE ISSUED.
- ALL DIMENSIONS RELEVANT TO SETTING OUT AND OFF-SITE WORK SHALL BE VERIFIED BEFORE CONSTRUCTION
- DIMENSIONS SHALL NOT BE OBTAINED BY SCALING THE DRAWINGS.
- ALL DIMENSIONS ON DETAILS ARE IN MILLIMETRES UNLESS STATED OTHERWISE. ALL PLANS AND LEVELS ARE EXPRESSED IN METRES.
- DURING CONSTRUCTION THE STRUCTURAL STABILITY OF THE WORKS SHALL BE MAINTAINED AND ENSURE NO PARTS BE OVER STRESSED UNDER CONSTRUCTION ACTIVITIES.
- WORKMANSHIP AND MATERIALS ARE TO BE IN ACCORDANCE WITH THE RELEVANT CURRENT S.A.A. CODES INCLUDING ALL AMENDMENTS, AND THE LOCAL STATUTORY AUTHORITIES, EXCEPT WHERE VARIED BY THE CONTRACT DOCUMENTS.
- THE APPROVAL OF A SUBSTITUTION SHALL BE SOUGHT FROM ACOR CONSULTANTS / PRINCIPAL'S REPRESENTATIVE BUT IS NOT AN AUTHORISATION FOR A VARIATION. ANY VARIATIONS INVOLVED MUST BE TAKEN UP WITH ACOR CONSULTANTS / PRINCIPAL'S REPRESENTATIVE BEFORE THE WORK COMMENCES.
- ANY DISCREPANCIES OR OMISSIONS SHALL BE REFERRED TO THE ENGINEER FOR A DECISION BEFORE PROCEEDING WITH THE WORK.
- BUILDING FROM THESE DRAWINGS IS NOT TO COMMENCE UNTIL APPROVED BY THE PRINCIPAL CERTIFYING AUTHORITY.
- THE WORD 'ENGINEER' USED IN THESE NOTES REFER TO AN EMPLOYEE OR NOMINATED REPRESENTATIVE OF ACOR CONSULTANTS PTY LTD.
- ALL CONSTRUCTION ACTIVITIES SHALL COMPLY WITH THE RELEVANT CURRENT WORKPLACE HEALTH AND SAFETY LEGISLATION.

EXISTING SERVICES AND FEATURES

- AN ALLOWANCE SHALL BE PROVIDED FOR THE CAPPING OFF, EXCAVATION, REMOVAL, AND DISPOSAL (IF REQUIRED) OF ALL EXISTING SERVICES WITHIN AREAS AFFECTED BY THE WORKS IN THE CONTRACT AREA, AS SHOWN ON THE DRAWINGS, UNLESS DIRECTED OTHERWISE BY THE PRINCIPAL'S REPRESENTATIVE.
- ALL TIMES SERVICES TO ALL BUILDINGS SHALL NOT AFFECTED BY THE WORKS ARE NOT DISRUPTED.
- EXISTING BUILDINGS, EXTERNAL STRUCTURES, AND TREES SHOWN ON THESE DRAWINGS ARE FEATURES EXISTING PRIOR TO ANY DEMOLITION WORKS.
- INTERRUPTION TO SUPPLY OF EXISTING SERVICES SHALL BE DONE SO AS NOT TO CAUSE ANY INCONVENIENCE TO THE PRINCIPAL.

SITWORKS NOTES

- ORIGIN OF LEVELS :- AUSTRALIAN HEIGHT DATUM (A.H.D.)
- ALL DIMENSIONS MUST VERIFIED AND EXISTING LEVELS ON SITE PRIOR TO COMMENCEMENT OF WORK.
- ALL WORK IS TO BE UNDERTAKEN IN ACCORDANCE WITH THE DETAILS SHOWN ON THE DRAWINGS, THE SPECIFICATIONS AND THE DIRECTIONS OF THE PRINCIPAL'S REPRESENTATIVE.
- EXISTING SERVICES HAVE BEEN PLOTTED FROM SUPPLIED DATA AND AS SUCH THEIR ACCURACY CANNOT BE GUARANTEED. ANY DISCREPANCIES SHALL BE REPORTED TO THE PRINCIPAL'S REPRESENTATIVE. CLEARANCES SHALL BE OBTAINED FROM THE RELEVANT SERVICE AUTHORITY.
- CARE IS TO BE TAKEN WHEN EXCAVATING NEAR EXISTING SERVICES. NO MECHANICAL EXCAVATIONS ARE TO BE UNDERTAKEN OVER COMMUNICATIONS OR ELECTRICAL SERVICES. HAND EXCAVATE IN THESE AREAS.
- ALL SERVICE TRENCHES UNDER VEHICULAR PAVEMENTS SHALL BE BACKFILLED WITH AN APPROVED NON-NATURAL GRANULAR MATERIAL AND COMPACTED TO 98% STANDARD MAXIMUM DRY DENSITY IN ACCORDANCE WITH AS.1289.5.1.1.
- ALL TRENCH BACKFILL MATERIAL SHALL BE COMPACTED TO THE SAME DENSITY AS THE ADJACENT MATERIAL.
- ON COMPLETION OF PIPE INSTALLATION ALL DISTURBED AREAS MUST BE RESTORED TO ORIGINAL, INCLUDING KERBS, FOOTPATHS, CONCRETE AREAS, GRAVEL AND GRASSED AREAS AND ROAD PAVEMENTS.
- PROVIDE 10mm WIDE EXPANDING CORK JOINTS BETWEEN CONCRETE PAVEMENTS AND ALL BUILDINGS, WALLS, FOOTINGS, COLUMNS, KERBS, DISH DRAINS, GRATED DRAINS, BOLLARD FOOTINGS ETC
- ALL BATTERS TO BE GRASSED LINED WITH MINIMUM 100 TOPSOIL AND APPROVED COUCH LAID AS TURF.
- MAKE SMOOTH TRANSITION TO EXISTING SERVICES AND MAKE GOOD.
- ALL TEMPORARY DIVERSION DRAINS AND MOUNDS SHALL BE PROVIDED TO ENSURE THAT EXPOSED SURFACES ARE FREE-DRAINING AT ALL TIMES. WHERE NECESSARY, EXCAVATE SUMPS AND PROVIDE PUMPING EQUIPMENT TO DRAIN EXPOSED AREAS.
- THESE PLANS SHALL BE READ IN CONJUNCTION WITH APPROVED ARCHITECTURAL, STRUCTURAL, HYDRAULIC AND ELECTRICAL DRAWINGS AND SPECIFICATIONS.
- TRENCHES THROUGH EXISTING ROAD AND CONCRETE PAVEMENTS SHALL BE SAWCUT TO FULL DEPTH OF CONCRETE AND A MIN 50mm IN BITUMINOUS PAVING.
- ALL BRANCH GAS AND WATER SERVICES UNDER DRIVEWAYS AND BRICK PAVING SHALL BE LOCATED IN Ø80 uPVC SEWER GRADE CONDUITS EXTENDING A MIN OF 500mm PAST PAVING.
- ON COMPLETION OF WORKS ALL DISTURBED AREAS MUST BE RESTORED TO ORIGINAL INCLUDING, BUT NOT LIMITED TO, KERBS, FOOTPATHS, CONCRETE AREAS, GRASS AND LANDSCAPED AREAS.

STORMWATER NOTES

- ALL DIMENSIONS, EXISTING LEVELS, SERVICES, AND STRUCTURES ON SITE SHALL BE VERIFIED PRIOR TO COMMENCEMENT OF WORKS.
- ALL WORK SHALL BE UNDERTAKEN IN ACCORDANCE WITH THE DETAILS SHOWN ON THE DRAWINGS AND THE SPECIFICATION.
- ON COMPLETION OF PROPOSED WORKS ALL DISTURBED AREAS MUST BE RESTORED TO ORIGINAL, INCLUDING KERBS, FOOTPATHS, CONCRETE AREAS, GRAVEL, GRASSED & LANDSCAPE AREAS AND ROAD PAVEMENTS. (U.N.O.)
- ALL AUTHORITY APPROVALS SHALL BE OBTAINED.
- MAKE SMOOTH TRANSITION TO EXISTING SERVICES AND MAKE GOOD.
- CARE IS TO BE TAKEN WHEN EXCAVATING NEAR EXISTING SERVICES. NO MECHANICAL EXCAVATIONS ARE TO BE UNDERTAKEN OVER THESE SERVICES. HAND EXCAVATE IN THESE AREAS.
- THESE PLANS SHALL BE READ IN CONJUNCTION WITH APPROVED ARCHITECTURAL, STRUCTURAL, HYDRAULIC, AND OTHER SERVICES DRAWINGS AND SPECIFICATIONS.
- EQUIVALENT STRENGTH FRC PIPES MAY BE USED.
- ALL PIPE JUNCTIONS, BENDS AND TAPERS UP TO AND INCLUDING 450 DIA SHALL BE VIA PURPOSE MADE FITTINGS.
- MINIMUM GRADE TO STORMWATER LINES TO BE 1%. (U.N.O.)
- ALL CONNECTIONS TO EXISTING DRAINAGE PITS SHALL BE MADE IN A TRADESMAN-LIKE MANNER AND THE INTERNAL WALL OF THE PIT AT THE POINT OF ENTRY SHALL BE CEMENT RENDERED TO ENSURE A SMOOTH FINISH.
- WHERE TRENCHES ARE IN ROCK, THE PIPE SHALL BE BEDDED ON A MIN. 50mm CONCRETE BED (OR 75mm THICK BED OF 12mm BLUE METAL) UNDER THE BARREL OF THE PIPE. THE PIPE COLLAR AT NO POINT SHALL BEAR ON THE ROCK. IN OTHER THAN ROCK, PIPES SHALL BE LAID ON A 75mm THICK SAND BED. IN ALL CASES BACKFILL THE TRENCH WITH SAND TO 200mm ABOVE THE PIPE. WHERE THE PIPE IS UNDER PAVEMENTS BACKFILL REMAINDER OF TRENCH WITH SAND OR APPROVED GRANULAR BACKFILL COMPACTED IN 150mm LAYERS TO 98% STANDARD MAX. DRY DENSITY.
- BEDDING SHALL BE (U.N.O.) TYPE H1, IN ACCORDANCE WITH CURRENT RELEVANT AUSTRALIAN STANDARDS.
- WHERE STORMWATER LINES PASS UNDER FLOOR SLABS SEWER GRADE RUBBER RING JOINTS ARE TO BE USED.
- PROVIDE 3.0M LENGTH OF 100 DIA. SUBSOIL DRAINAGE PIPE WRAPPED IN FABRIC SOCK, AT UPSTREAM END OF EACH PIT.

ON-SITE DETENTION NOTES

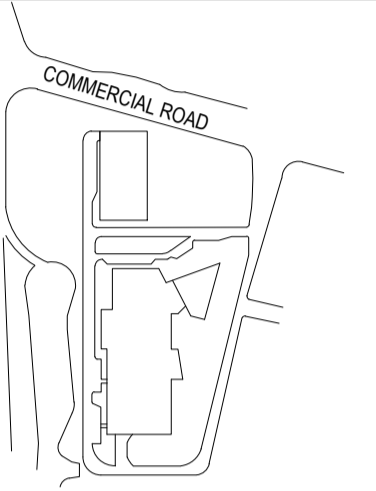
- ALL 375 DIA. DRAINAGE PIPES AND LARGER SHALL BE CLASS "2" APPROVED SPIGOT AND SOCKET FRC OR RCP PIPES WITH RUBBER RING JOINTS. (U.N.O.) ALL DOWNPIPE DRAINAGE LINES SHALL BE SEWER GRADE uPVC WITH SOLVENT WELD JOINTS. (U.N.O.)
- EQUIVALENT STRENGTH REINFORCED CONCRETE PIPES MAY BE USED.
- ALL PIPE JUNCTIONS UP TO AND INCLUDING 450 DIA. AND TAPERS SHALL BE VIA PURPOSE MADE FITTINGS.
- MINIMUM GRADE TO STORMWATER LINES TO BE 1%. (U.N.O.)
- ALL CONNECTIONS TO EXISTING DRAINAGE PITS SHALL BE MADE IN A TRADESMAN-LIKE MANNER AND THE INTERNAL WALL OF THE PIT AT THE POINT OF ENTRY SHALL BE CEMENT RENDERED TO ENSURE A SMOOTH FINISH.
- PRECAST PITS SHALL NOT BE USED UNLESS WRITTEN APPROVAL IS OBTAINED FROM THE ENGINEER.
- WHERE TRENCHES ARE IN ROCK, THE PIPE SHALL BE BEDDED ON A MIN. 50MM CONCRETE BED (OR 75MM THICK BED OF 12MM BLUE METAL) UNDER THE BARREL OF THE PIPE. THE PIPE COLLAR AT NO POINT SHALL BEAR ON THE ROCK. IN OTHER THAN ROCK, PIPES SHALL BE LAID ON A 75MM THICK SAND BED. IN ALL CASES BACKFILL THE TRENCH WITH SAND TO 200MM ABOVE THE PIPE. WHERE THE PIPE IS UNDER PAVEMENTS BACKFILL REMAINDER OF TRENCH WITH SAND OR APPROVED GRANULAR BACKFILL COMPACTED IN 150MM LAYERS TO 98% STANDARD MAX. DRY DENSITY.
- BEDDING SHALL BE (U.N.O.) TYPE HS2, IN ACCORDANCE WITH CURRENT RELEVANT AUSTRALIAN STANDARDS.
- WHERE STORMWATER LINES PASS UNDER FLOOR SLABS SEWER GRADE RUBBER RING JOINTS ARE TO BE USED.
- WHERE SUBSOIL DRAINAGE LINES PASS UNDER FLOOR SLABS AND VEHICULAR PAVEMENTS UNSLOTTED UPVC SEWER GRADE PIPE SHALL BE USED.
- PROVIDE 3.0M LENGTH OF 100 DIA. SUBSOIL DRAINAGE PIPE WRAPPED IN FABRIC SOCK, AT UPSTREAM END OF EACH PIT.

LINEMARKING NOTES

- THE WORK SHALL INCLUDE ALL LINE MARKING TO ROADS, HARDSTANDS, PATHS, CARPARKS AND THE TRAFFICABLE AREAS.
- THE PAVEMENT MARKING AND PAINT SHALL BE IN ACCORDANCE WITH AS 1742.2 AND THE RELEVANT LOCAL AND STATE AUTHORITY GUIDELINES.
- PAINT SHALL BE TYPE 3, CLASS A AND THE COLOUR SHALL BE WHITE AND NOT SUBJECT TO DISCOLOURATION BY BITUMEN FROM THE ROAD SURFACE. EACH LINE SHALL BE 80mm WIDE, UNO IN LEGEND. ALL PAINT SHALL BE APPLIED BY MECHANICAL SPRAYER.
- LINE MARKING SHALL BE SPOTTED OUT AND APPROVED PRIOR TO SPRAYING.
- PAINT SHALL BE APPLIED AT A WET THICKNESS OF BETWEEN 0.35mm TO 0.40mm.
- ALL EXISTING PAVEMENT MARKING WHICH IS LOCATED ON EXISTING PAVEMENT TO BE RETAINED SHALL BE REMOVED BY GRINDING WHERE THE EXISTING MARKINGS ARE MADE REDUNDANT BY THE PROPOSED WORKS.

NORTH POINT

KEY PLAN



REV	DESCRIPTION OF CHANGE	DATE	CHECKED	ISSUED
0	SSDA	15.08.2025	RB	GL
1	SSDA	28.08.2025	RB	GL
2	SSDA	02.02.2026	RB	JR

PRINT IN COLOUR

ARCHITECT



Level 24, 25 Market Place, Sydney NSW, 2000
+61 2 9566 2666 | hdnrc.com
HDR Pty Limited ABN 76 158 075 220 trading as HDR

CLIENT



PROJECT
ROUSE HILL HOSPITAL - MAIN WORKS
CORNER OF COMMERCIAL AND WINDSOR RD, ROUSE HILL, NSW 2155 AUSTRALIA

DRAWING TITLE
SSDA
NOTES SHEET 1

Drawn	Designed	Q.A. Check	Q.A. Date
RP	RB	GL	15.08.2025

SCALE	PROJECT NUMBER
NA	

DRAWING NUMBER	ISSUE
130486-ACOR-CV-DWG-015102	2

PROJECT STATUS
NOT FOR CONSTRUCTION



COMPACTION NOTES

- REFER TO GEOTECHNICAL INVESTIGATION REPORT PREPARED BY: JKGeotechnics, REF: 35128LFrptRev2, DATED: 26 NOVEMBER 2024.
- STRIP TOPSOIL TO EXPOSE NATURALLY OCCURRING MATERIAL AND STOCKPILE ON SITE FOR SELECTIVE RE-USE OR DISPOSE OFF-SITE AS DIRECTED BY THE SUPERINTENDENT.
- UNCONTROLLED FILLING IS TO BE REMOVED FROM THE FOOTPRINT OF THE BUILDING AND PAVEMENT AREAS, THE STRIPPED SURFACE SHALL BE INSPECTED BY A GEOTECHNICAL ENGINEER.
- PROOF ROLL EXPOSED NATURAL SURFACE WITH A MINIMUM OF EIGHT PASSES OF A SMOOTH DRUM ROLLER (MINIMUM STATIC WEIGHT OF 10 TONNES) THE FINAL PASS SHALL BE IN THE PRESENCE OF A GEOTECHNICAL ENGINEER.
- ALL SOFT, WET OR UNSUITABLE MATERIAL TO BE REMOVED AS DIRECTED BY THE GEOTECHNICAL ENGINEER AND REPLACED WITH APPROVED MATERIAL SATISFYING THE REQUIREMENTS LISTED BELOW.
- WASTE CLASSIFICATION OF SPOIL MATERIAL, INCLUDING PROVISION OF APPROPRIATE HAZARDOUS MATERIALS HANDLING (AS REQUIRED).
- ALL FILL MATERIAL SHALL BE FROM A SOURCE APPROVED BY THE GEOTECHNICAL ENGINEER AND SHALL COMPLY WITH THE FOLLOWING :
 - FREE FROM ORGANIC, PERISHABLE AND CONTAMINATED MATTER
 - MAXIMUM PARTICLE SIZE 75MM
 - PLASTICITY INDEX BETWEEN 2% AND 15%
- ALL FILL MATERIAL SHALL BE PLACED IN MAXIMUM 200MM THICK LAYERS AND COMPACTED AT OPTIMUM MOISTURE CONTENT (+ OR - 2%) TO ACHIEVE A DRY DENSITY DETERMINED IN ACCORDANCE WITH AS 1289 5.3.1 OF NOT LESS THAN THE FOLLOWING STANDARD MINIMUM DRY DENSITY IN ACCORDANCE WITH AS 1289 E5.1.1 :

LOCATION	STANDARD DRY DENSITY
UNDER BUILDING SLABS	98%
AREAS OF SERVICE TRENCHES	98%
EXTERNAL PAVED AREAS, ROADS AND CARPARKS	98%
LANDSCAPED AREAS	90%

THE UPPER 0.5m THICKNESS FOR THE FOLLOWING AREAS MUST BE COMPACTED AT OPTIMUM MOISTURE CONTENT (+ OR -2%) AS FOLLOWS

LOCATION	STANDARD DRY DENSITY
UNDER BUILDING SLABS	100%
PAVEMENTS AND CARPARKS	100%

- THE EARTHWORKS OPERATIONS SHALL BE PROGRAMMED TO ENSURE THAT WORKING AREAS ARE ADEQUATELY DRAINED DURING THE CONSTRUCTION PERIOD. SURFACES SHALL BE GRADED AND SEALED TO ELIMINATE DEPRESSIONS, ROLLER MARKS, OR OTHER IMPERFECTIONS THAT MAY ALLOW WATER TO POND OR PENETRATE THE UNDERLYING MATERIAL.
- TESTING OF THE SUBGRADE SHALL BE CARRIED OUT BY AN APPROVED NATA REGISTERED LABORATORY. TESTING FREQUENCY SHALL BE IN ACCORDANCE WITH THE FREQUENCY SPECIFIED IN THE GEOTECHNICAL REPORT - FOR EARTHWORKS 1 TEST / 1000m² / LAYER OR THREE TESTS PER VISIT, WHICHEVER IS THE GREATER

ASPHALTIC CONCRETE NOTES

GENERAL

- MINERAL AGGREGATES TO COMPLY WITH AUSTRALIAN STANDARDS
- MINERAL FILLER TO COMPLY WITH AS.2357 MINERAL FILLERS OR ASPHALT.
- BITUMEN BINDER SHALL COMPLY WITH AS 2008

MIX PROPORTIONS

- JOB MIX - 10mm NOMINAL SIZE AGGREGATE. MINIMUM BITUMEN CONTENT BY MASS OF TOTAL MASS - 5.1%
- MIX STABILITY - BETWEEN 16kN AND 36kN AS DETERMINED BY AS 2891
- AIR VOIDS IN COMPACTED MIX - BETWEEN 4% AND 7% OF THE VOLUME OF THE MIX.
- VOIDS FILLED IN BINDER - 65-80% OF AIR VOIDS IN THE TOTAL MINERAL AGGREGATE FILLED BY BINDER IN ACCORDANCE WITH AUSTRALIAN STANDARDS.

PAVEMENT PREPARATION

- THE EXISTING SURFACE TO BE SEALED SHALL BE DRY AND BROOMED BEFORE COMMENCEMENT OF WORK TO ENSURE COMPLETE REMOVAL OF ALL SUPERFICIAL FOREIGN MATTER.
- ALL DEPRESSIONS OR UNEVEN AREAS ARE TO BE TACK-COATED AND BROUGHT UP TO GENERAL LEVEL OF PAVEMENT WITH ASPHALTIC CONCRETE BEFORE LAYING OF MAIN COURSE.

TACK COAT

- THE WHOLE OF THE AREA TO BE SHEETED WITH ASPHALTIC CONCRETE SHALL BE LIGHTLY AND EVENLY COATED WITH RAPID SETTING BITUMEN COMPLYING WITH AUSTRALIAN STANDARDS. APPLICATION RATE FOR RESIDUAL BITUMEN SHALL BE 0.15 TO 0.30 LITRES/SQUARE METRE. APPLICATION SHALL BE BY MEANS OF A MECHANICAL SPRAYER WITH SPRAY BAR.

SPREADING

- ALL ASPHALTIC CONCRETE SHALL BE SPREAD WITH A SELF PROPELLED PAVING MACHINE.
- THE ASPHALTIC CONCRETE SHALL BE LAID AT A MIX TEMPERATURE AS SHOWN BELOW;

ROAD SURFACE TEMPERATURE IN SHADE (°C)	MIX TEMPERATURES (°C)
5 - 10	NOT PERMITTED
10 - 15	150
15 - 25	145
OVER 25	140

- ASPHALTIC CONCRETE SHALL NOT BE LAID WHEN THE ROAD SURFACE IS WET OR WHEN COLD WINDS CHILL THE MIX ADVERSELY AFFECT SPREADING AND COMPACTION.
- THE MINIMUM COMPACTED THICKNESS IS 30mm OVER EXISTING SEALED PAVEMENTS AND 50mm OVER NEW PAVEMENTS.

JOINTS

- THE NUMBER OF JOINTS BOTH LONGITUDINAL AND TRANSVERSE SHALL BE KEPT TO A MINIMUM.
- THE DENSITY AND SURFACE FINISH AT JOINTS SHALL BE SIMILAR TO THOSE OF THE REMAINDER OF THE LAYER.

COMPACTION

- ALL COMPACTION SHALL BE UNDERTAKEN USING SELF PROPELLED ROLLERS.
- INITIAL ROLLING SHALL BE COMPLETE BEFORE THE MIX TEMPERATURE FALLS BELOW 105°C
- SECONDARY ROLLING SHALL BE COMPLETED BEFORE THE MIX TEMPERATURE FALLS BELOW 60°C
- MINIMUM CHARACTERISTICS VALUE OF RELATIVE COMPACTION OF A LOT WHEN TESTED IN ACCORDANCE WITH AS2150.

FINISHED PAVEMENT PROPERTIES

- FINISHED SURFACES SHALL BE SMOOTH, DENSE AND TRUE TO SHAPE AND SHALL NOT VARY MORE THAN 10mm FROM THE SPECIFIED PLAN LEVEL AT ANY POINT AND SHALL NOT DEVIATE FROM THE BOTTOM OF A 3m STRAIGHT EDGE LAID IN ANY DIRECTION BY MORE THAN 5mm.

CONCRETE NOTES

GENERAL

- ALL WORKMANSHIP AND MATERIALS SHALL COMPLY WITH AS 3600 CURRENT EDITIONS WITH AMENDMENTS, AND THE ACSE CONCRETE SPECIFICATION EXCEPT WHERE VARIED BY THE CONTRACT DOCUMENTS.
- VERIFY ALL SETTING OUT DIMENSIONS WITH THE ARCHITECT AND/OR THE SURVEYOR.
- DO NOT OBTAIN DIMENSIONS BY SCALING THE DRAWINGS.
- IN CASE OF DOUBT - ASK.

CONCRETE

- PLACE CONCRETE OF THE FOLLOWING CHARACTERISTIC COMPRESSIVE STRENGTH F'c AS DEFINED IN AS.3600 OR M.R. FORM 609. ADD WATER REDUCING ADMIXTURE EQUAL TO WRDA.

LOCATION	AS 3600 Fc MPa AT 28 DAYS	SPECIFIED SLUMP	NOMINAL AGG. SIZE
ALL KERB PITS ETC.	25	80	20
VEHICULAR PAVEMENTS	32	80	20

- USE "A.C.S.E. SPECIFICATION TYPE A" CEMENT.

- ALL CONCRETE SHALL BE SUBJECT TO PROJECT CONTROL SAMPLE AND TESTING TO AS.3600.

- CONSOLIDATE BY VIBRATION.

REINFORCEMENT

- FIX REINFORCEMENT AS SHOWN ON DRAWINGS. THE TYPE AND GRADE IS INDICATED BY A SYMBOL AS SHOWN BELOW. ON THE DRAWING N IS FOLLOWED BY A NUMERAL WHICH INDICATES THE SIZE IN MILLIMETRES. A MARK NUMERAL (IF USED) FOLLOWS THIS NUMERAL.

- N. HOT ROLLED DEFORMED BARS, GRADE 500N
- R. HOT ROLLED PLAIN BARS, GRADE 250N
- W. COLD DRAWN PLAIN ROUND WIRE, GRADE 500L
- SL. SQUARE WELDED MESH, GRADE 500L
- RL. RECTANGULAR WELDED MESH, GRADE 500L
- LTM. RECTANGULAR WELDED TRENCH MESH, GRADE 500L

CURING

- CURING OF ALL CONCRETE SHALL BE IN ACCORDANCE WITH AS3600 AND SHALL COMMENCE WITHIN 2 HOURS OF FINISHING OPERATIONS.
- CURING SHALL BE CONTINUAL SATURATION WITH POTABLE WATER FOR 3 DAYS FOLLOWED BY PREVENTION OF MOISTURE LOSS FOR THE NEXT 4 DAYS, USING POLYTHENE SHEETING OR WET HESSIAN PROTECTED BY WIND OR TRAFFIC AND THEN ALLOWING GRADUAL DRYING OUT.
- CURING COMPOUNDS MAY BE USED PROVIDED THAT THEY COMPLY WITH AS3799 AND NOT AFFECT THE PROPOSED FINISH.
- THE COMPATIBILITY OF CURING COMPOUNDS WITH THE PROPOSED FINISH AND OTHER CONCRETE ADMIXTURES SHALL BE VERIFIED PRIOR TO ORDERING AND APPLICATION.
- CURING COMPOUNDS ARE APPLIED UNIFORMLY IN ACCORDANCE WITH THE MANUFACTURER'S SPECIFICATIONS. PVA - BASED CURING COMPOUNDS ARE NOT ACCEPTABLE.
- CURING SHALL BE UNDERTAKEN BY AN EXPERIENCED PERSONNEL FAMILIAR WITH THE PROPOSED COMPOUNDS AND THE MANUFACTURER'S SPECIFICATIONS.
- WHERE SHADE TEMPERATURES EXCEEDS 35°C, SPRAY THE EXPOSED SURFACE OF THE CONCRETE PAVEMENT / SLAB DURING THE PLACING OF FINISHING OPERATION WITH A FINE FILM OR APPROVED ALIPHATIC ALCOHOL. REPEAT THE SPRAY IF THE SPRAY SURFACE HAS BEEN RE-WORKED.
- ENSURE ADEQUATE SUPPLY OF ALIPHATIC ALCOHOL ON-SITE PRIOR TO CONCRETE WORKS.

CONCRETE PAVEMENT JOINT NOTES

CONCRETE MIX PARAMETERS ;

- MAXIMUM AGGREGATE SIZE 20mm
- FLEXURAL STRENGTH AT 28 DAYS = 3.5MPa
- FLEXURAL STRENGTH AT 90 DAYS = 3.85 MPa
- MAXIMUM WATER / CEMENT RATIO = 0.55
- MAXIMUM SHRINKAGE LIMIT = 650 MICRON STRAINS (AS 1012 Pt 13)
- MINIMUM CEMENT CONTENT = 300kg/m3
- CEMENT TO BE TYPE "A" (NORMAL CEMENT) TO AS.1315
- SLUMP = 50mm

- JOINT TO BE SAWN AS SOON AS CONCRETE HAS HARDENED SUFFICIENTLY THAT IT WILL NOT BE DAMAGED BY SAWING. IF AN UNPLANNED CRACK OCCURS THE SLAB SHALL BE REPLACES EITHER SIDE OF THE UNPLANNED CRACK, UNLESS DIRECTED OTHERWISE.

- CONSTRUCT JOINTS AS DETAILED
 - CONSTRUCTION JOINTS WHERE REQUIRED BUT NOT SHOWN, SHALL BE LOCATED TO THE APPROVAL OF THE ENGINEER.
 - ALL LONGITUDINAL CONSTRUCTION JOINTS SHALL BE FORMED AND INCLUDE DOWEL BARS AS SPECIFIED. ALL TRANSVERSE CONSTRUCTION JOINTS SHALL BE FORMED AND INCLUDE DOWEL BARS AS SPECIFIED.
 - BOND BREAKER TO BE TWO (2) UNIFORM COATS OF BITUMEN EMULSION ALL OVER THE EXPOSED SURFACE AND ON END.

- DOWELS AND TIE BARS TO MEET STRENGTH REQUIREMENTS OF STRUCTURAL GRADE STEEL IN ACCORDANCE AS. 1302. DOWELS AND TIE BARS SHALL BE ;

- STRAIGHT
- TO LENGTH SPECIFIED
- CLEAN AND FREE FROM MILL SCALE, RUST AND OIL.
- SAWN TO LENGTH NOT CROPPED.

- DIMENSIONS OF SEALANT RESERVOIR DEPENDANT ON THE SEALANT TYPE ADOPTED. ENGINEERS APPROVAL TO BE OBTAINED FOR SEALANT AND RESERVOIR DIMENSIONS. REFER DETAIL "B" FOR TYPICAL ARRANGEMENT AND SEALANT.

- PRIOR TO THE PLACEMENT OF CONCRETE IN THE ADJACENT SLAB, SELF EXPANDING CORK FILLER SHALL BE ADHERED TO THE ALREADY CAST AND CLEANED CONCRETE FACE USING AN APPROVED WATERPROOF ADHESIVE. ADHESIVE SHALL BE LIBERALLY APPLIED TO THE FULL FACE OF THE CONCRETE SLAB TO BE COVERED BY THE FILLER, AND ON THE FULL FACE OF THE FILLER TO BE ADHERED.

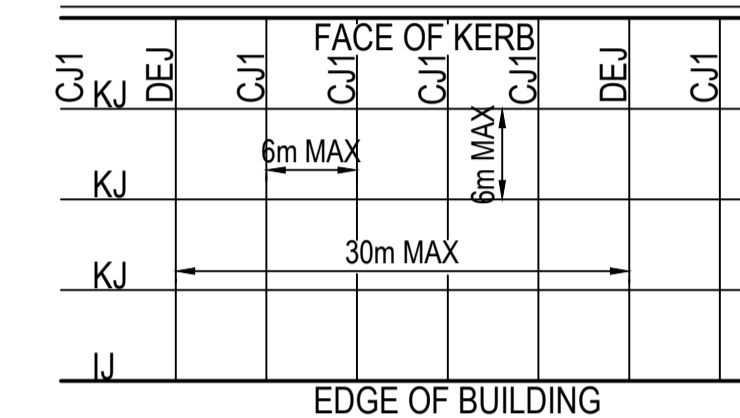
- REFER TO COMPACTION NOTES FOR PREPARATION OF SUB-BASE AND SUB-GRADE.

- ALL WORK TO BE BROOM FINISH.

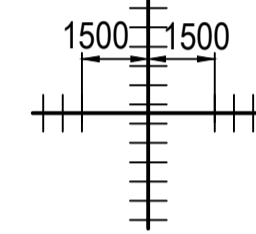
CONCRETE PAVEMENT JOINT NOTES Cont.

VEHICULAR PAVEMENT JOINTING

- ALL VEHICULAR PAVEMENT TO BE JOINTED AS SHOWN ON DRAWINGS.
- KEYED CONSTRUCTION JOINTS SHOULD GENERALLY BE LOCATED AT A MAXIMUM OF 6m CENTRES.
- SAWN JOINTS SHOULD GENERALLY BE LOCATED AT A MAXIMUM OF 6m CENTRES OR 1.5 x THE SPACING OF KEYED JOINTS, WHERE KEY JOINT SPACING IS LESS THAN 4m, WITH DOWELLED EXPANSION JOINTS AT MAXIMUM OF 30m CENTRES.
- PROVIDE 10mm WIDE FULL DEPTH ISOLATION JOINTS BETWEEN BUILDINGS AND ALL CONCRETE OR UNIT PAVERS.
- VEHICULAR PAVEMENT JOINTING AS FOLLOWS.



- WHERE DOWELLED JOINTS INTERSECT REMOVE DOWELS FROM LAST 1500mm FROM JOINT IN DIRECTION OF POUR.

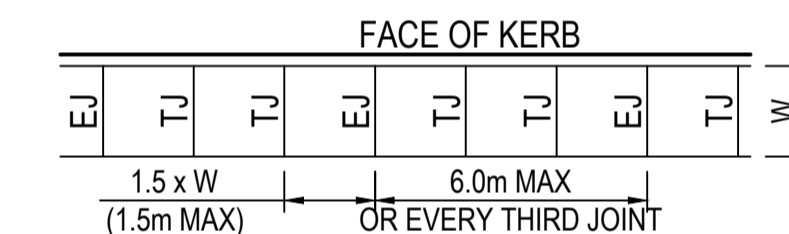


PEDESTRIAN FOOTPATH JOINTING

- FOOTPATH EXPANSION JOINTS ARE TO BE LOCATED WHERE POSSIBLE AT TANGENT POINTS OF CURVES AND ELSEWHERE AT MAX 6.0m CENTRES.

- TOOLED JOINTS ARE TO BE LOCATED AT A MAX 1.5 x WIDTH OF THE PAVEMENT.

- WHERE POSSIBLE JOINTS SHOULD BE LOCATED TO MATCH KERBING AND/OR ADJACENT PAVEMENT JOINTS.

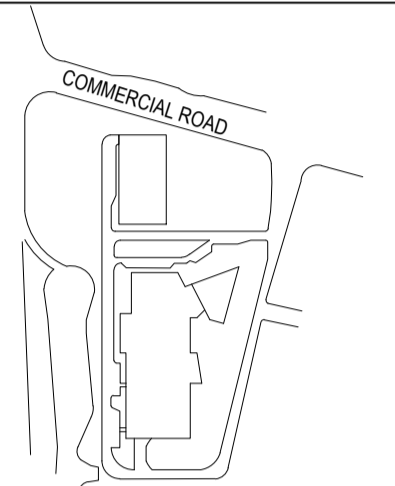


- ALL PEDESTRIAN FOOTPATH JOINTING LAYOUTS AS FOLLOWS (UNO).

- ALL RAMPED CROSSINGS SHALL BE DOWELED INTO ADJOINING PATH PAVEMENT.

NORTH POINT

KEY PLAN



REV	DESCRIPTION OF CHANGE	DATE	CHECKED	ISSUED
0	SSDA	15.08.2025	RB	GL
1	SSDA	28.08.2025	RB	GL
2	SSDA	02.02.2026	RB	JR

PRINT IN COLOUR

ARCHITECT



Level 24, 25 Martin Place, Sydney NSW, 2000
+61 2 9556 2666 | hdrinc.com
HDR Pty Limited ABN 76 158 075 220 trading as HDR

CLIENT



PROJECT
ROUSE HILL HOSPITAL - MAIN WORKS
CORNER OF COMMERCIAL AND WINDSOR RD, ROUSE HILL, NSW 2155 AUSTRALIA

DRAWING TITLE

SSDA
NOTES SHEET 2

Drawn	Designed	Q.A. Check	Q.A. Date
RP	RB	GL	15.08.2025

SCALE NA PROJECT NUMBER

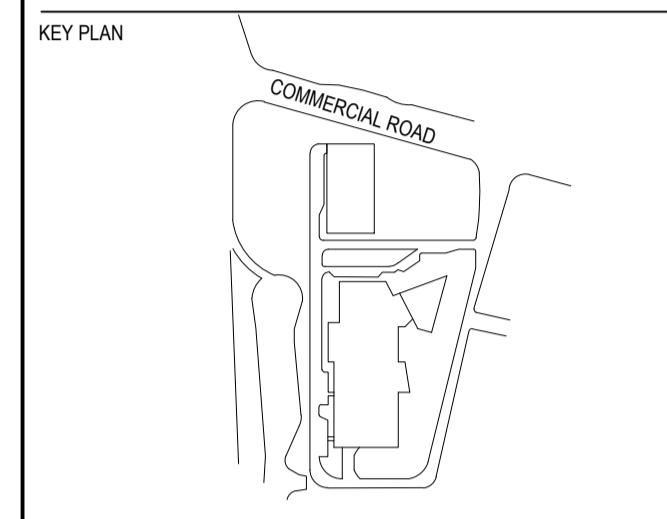
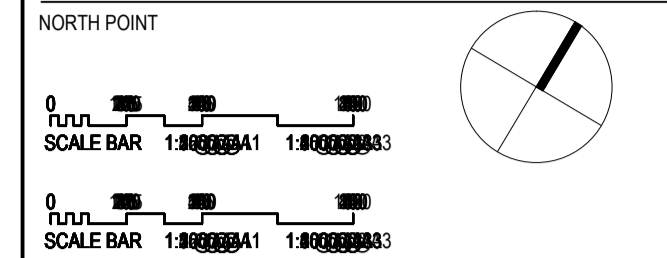
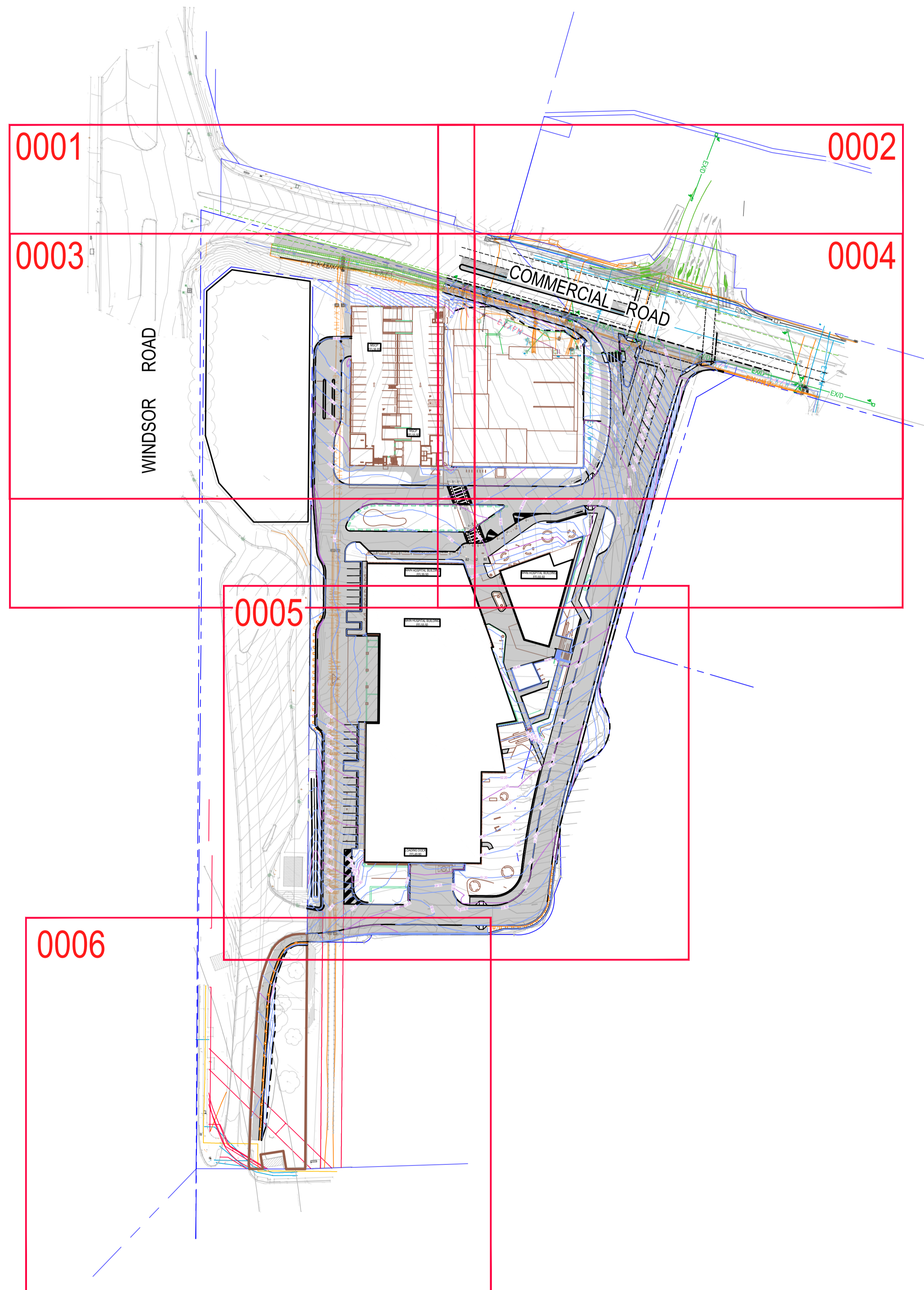
DRAWING NUMBER ISSUE

130486-ACOR-CV-DWG-015103 2

PROJECT STATUS

NOT FOR CONSTRUCTION





REV	DESCRIPTION OF CHANGE	DATE	CHECKED	ISSUED
0	SSDA	15.08.2025	RB	GL
2	SSDA	02.02.2026	RB	JR

PRINT IN COLOUR

ARCHITECT

Level 24, 25 Martin Place, Sydney NSW, 2000
 +61 2 9550 2666 | hdrinc.com
 HDR Pty Limited ABN 76 158 075 220 trading as HDR

CLIENT

Health Infrastructure NSW
 Level 6, 1 Riverside Road
 St Leonards, NSW 2055
 T: +61 2 9570 9422
 www.health.nsw.gov.au

PROJECT
 ROUSE HILL HOSPITAL - MAIN WORKS
 CORNER OF COMMERCIAL AND
 WINDSOR RD, ROUSE HILL,
 NSW 2155 AUSTRALIA

DRAWING TITLE
 SSDA
 KEY PLAN

Drawn	Designed	Q.A. Check	Q.A. Date
RP	RB	GL	15.08.2025

SCALE
 1:500

DRAWING NUMBER
 130486-ACOR-CV-DWG-015201

PROJECT NUMBER
 PROJECT STATUS

ISSUE
 2



NOT FOR CONSTRUCTION

LEGEND			
CUT		FILL	
-8 to -6.5 m		0.00 to 0.25 m	
-6.5 to -5 m		0.25 to 0.5 m	
-5.00 to -4.00 m		0.50 to 0.75 m	
-4.00 to -3.00 m		0.75 to 1.00 m	
-3.00 to -2.50 m		1.00 to 1.50 m	
-2.50 to -2.00 m		1.50 to 2.00 m	
-2.00 to -1.50 m		2.00 to 2.50 m	
-1.50 to -1.00 m		2.50 to 3.00 m	
-1.00 to -0.75 m		3.00 to 4.00 m	
-0.75 to -0.50 m		4.00 to 5.00 m	
-0.50 to -0.25 m		5.00 to 6.5 m	
-0.25 to 0.00 m		6.5 to 8 m	

CUT / FILL QUANTITIES	
TOTAL CUT	-1,350m³
TOTAL FILL	7,550m³
TOTAL BALANCE	6,200m³

NOTE: ALL EARTHWORKS QUANTITIES ARE THEORETICAL AND INDICATIVE ONLY, BASED UPON BANKED VOLUMES WITH NO ALLOWANCE FOR BULKING FACTORS. CONTRACTOR TO MAKE HIS OWN ASSESSMENT OF EARTHWORKS QUANTITIES

EARTHWORKS CUT AND FILL NOTES:

- BULKING AND COMPACTION FACTORS HAVE NOT BEEN APPLIED TO THE CUT AND FILL QUANTITIES.
- BOXING OUT TO ALL CIRCULATION PAVEMENTS AND CONCRETE HARDSTANDS HAVE BEEN APPLIED IN ACCORDANCE WITH THE PAVEMENT PLAN DETAILS SHOWN ON SHEET C01-4101
- REFER TO EARLY WORKS PACKAGE FOR THE BULK EARTHWORKS OF TEMPORARY ACCESS ROADS, HOSPITAL BUILDING PADS, MULTI-DECK CAR PARK AND ON-SITE DETENTION BASIN AND DPPI SITE.
- THE BULK EARTHWORK CALCULATION UTILISED THE PROPOSED GROUND LEVELS OF EARLY WORKS PACKAGE.
- CUT AND FILL CALCULATION HAVE NOT ALLOWED FOR PROPOSED MEDIAN ISLAND ON COMMERCIAL RD AND NORTHWEST TRAFFIC ISLAND INCLUDING THE ADJACENT ASPHALT PAVEMENT.
- CUT AND FILL CALCULATIONS HAVE BEEN BASED ON THE TOP OF SLAB LEVEL OF THE ON-SITE DETENTION BASIN DOWN TO THE SUBGRADE LEVEL ASSOCIATED WITH THE FINISHINGS
- ALL TOP SOIL SHALL BE RETAINED ON THE DEVELOPMENT SITE AND UTILISED EFFECTIVELY TO ENCOURAGE APPROPRIATE VEGETATION. NO STRIP TOPSOIL DEPTHS HAVE BEEN INCLUDED IN THESE CALCULATIONS.
- CUT AND FILL QUANTITIES ARE LIMITED TO THE BASEMENT AND BUILDING ENVELOPE. DRIVEWAYS, EXTERNAL LANDSCAPE, FOOTPATHS AND ROAD AREA HAVE NOT BEEN ACCOUNTED FOR IN THE QUANTITIES.



INSET 'A'

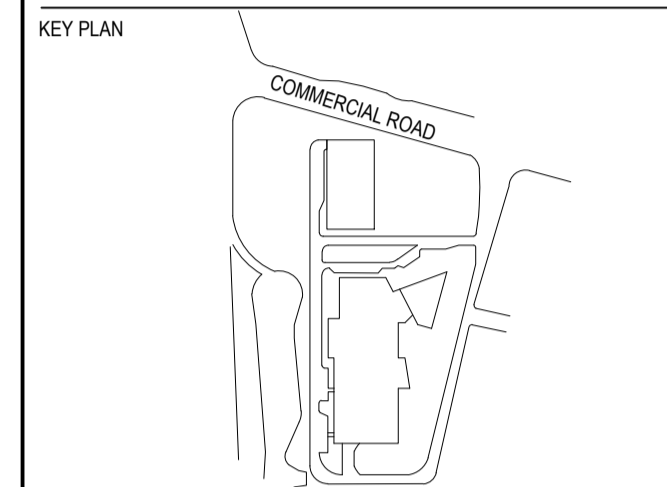
REFER TO EARLY WORKS PACKAGE FOR THE DESIGN OF DPPI SITE DESIGN

WINDSOR ROAD

REFER TO INSET 'A' FOR CONTINUATION OF SHARED PATH



NOTE:
REFER TO DRAWINGS 045101 AND 045102 FOR BULK EARTHWORKS SECTIONS



REV	DESCRIPTION OF CHANGE	DATE	CHECKED	ISSUED
0	SSDA	15.08.2025	RB	GL
2	SSDA	02.02.2026	RB	JR

PRINT IN COLOUR

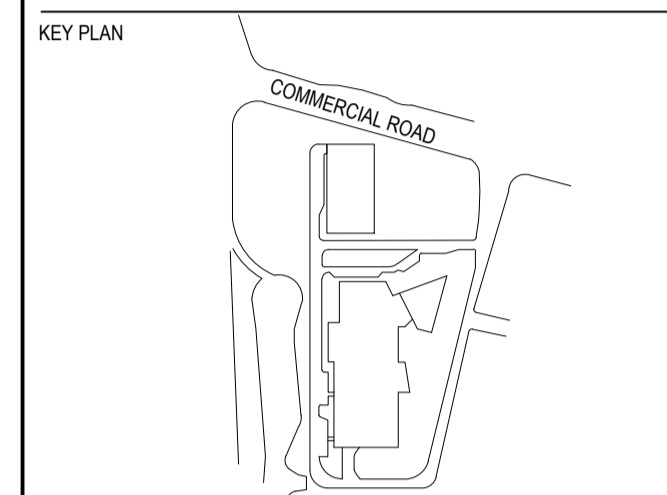
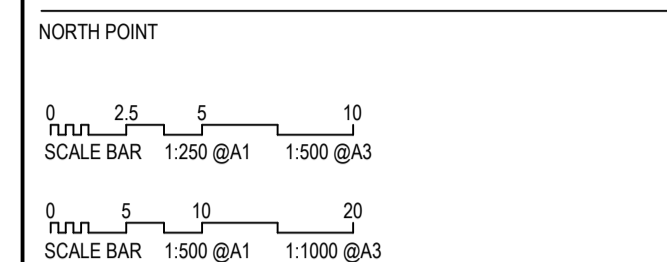
Drawn	Designed	Q.A. Check	Q.A. Date
RP	RB	GL	15.08.2025

SCALE 1:500 PROJECT NUMBER

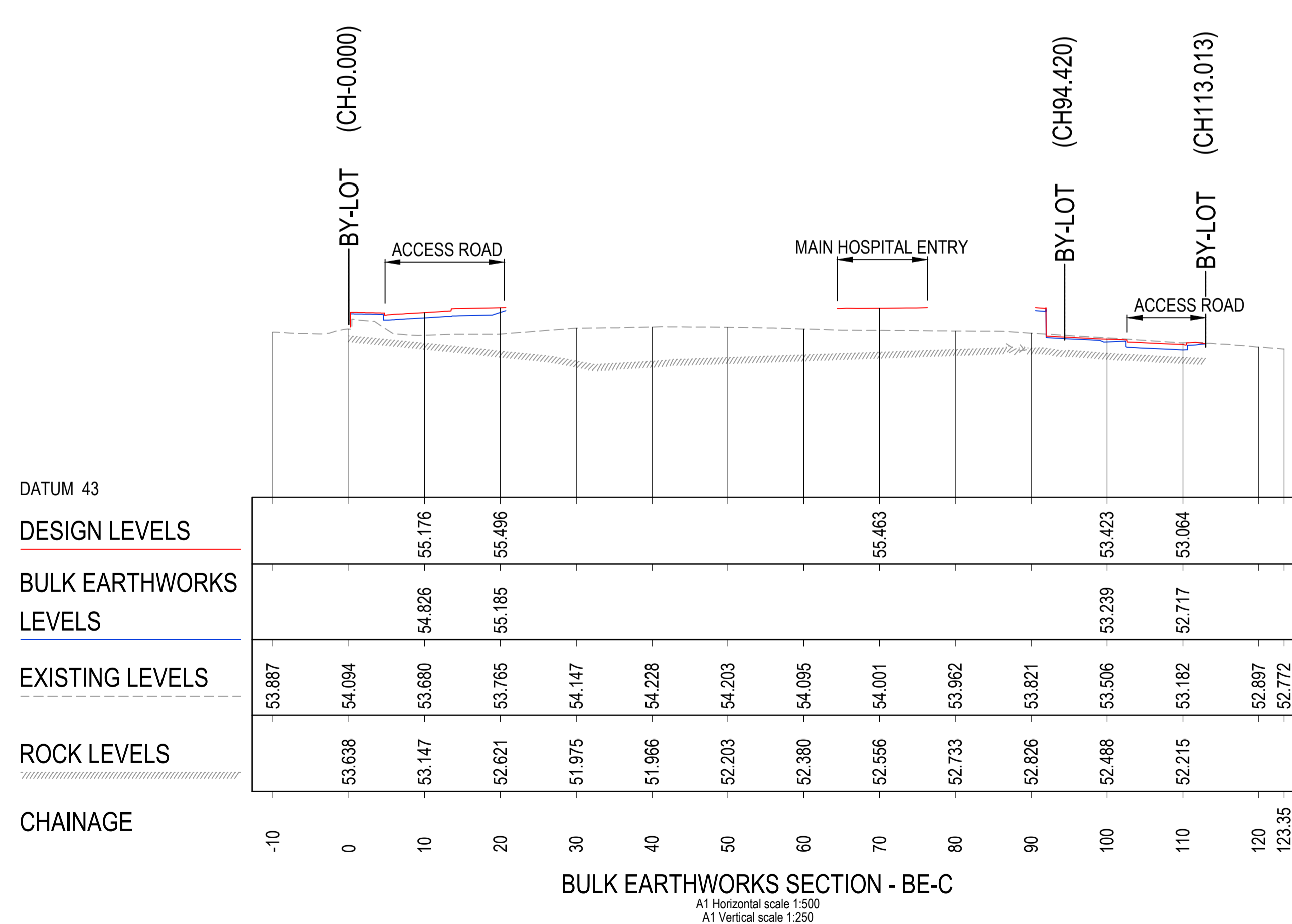
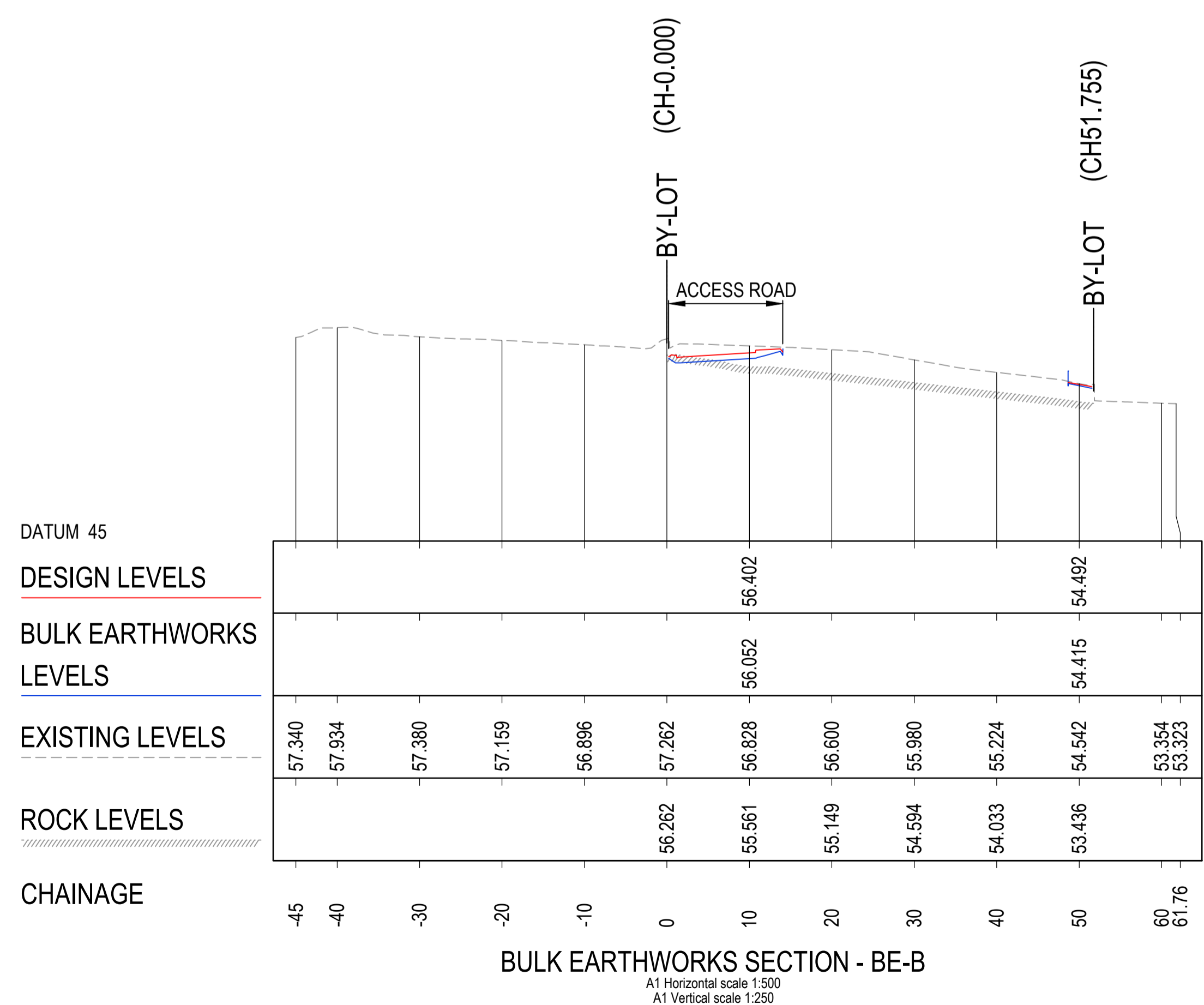
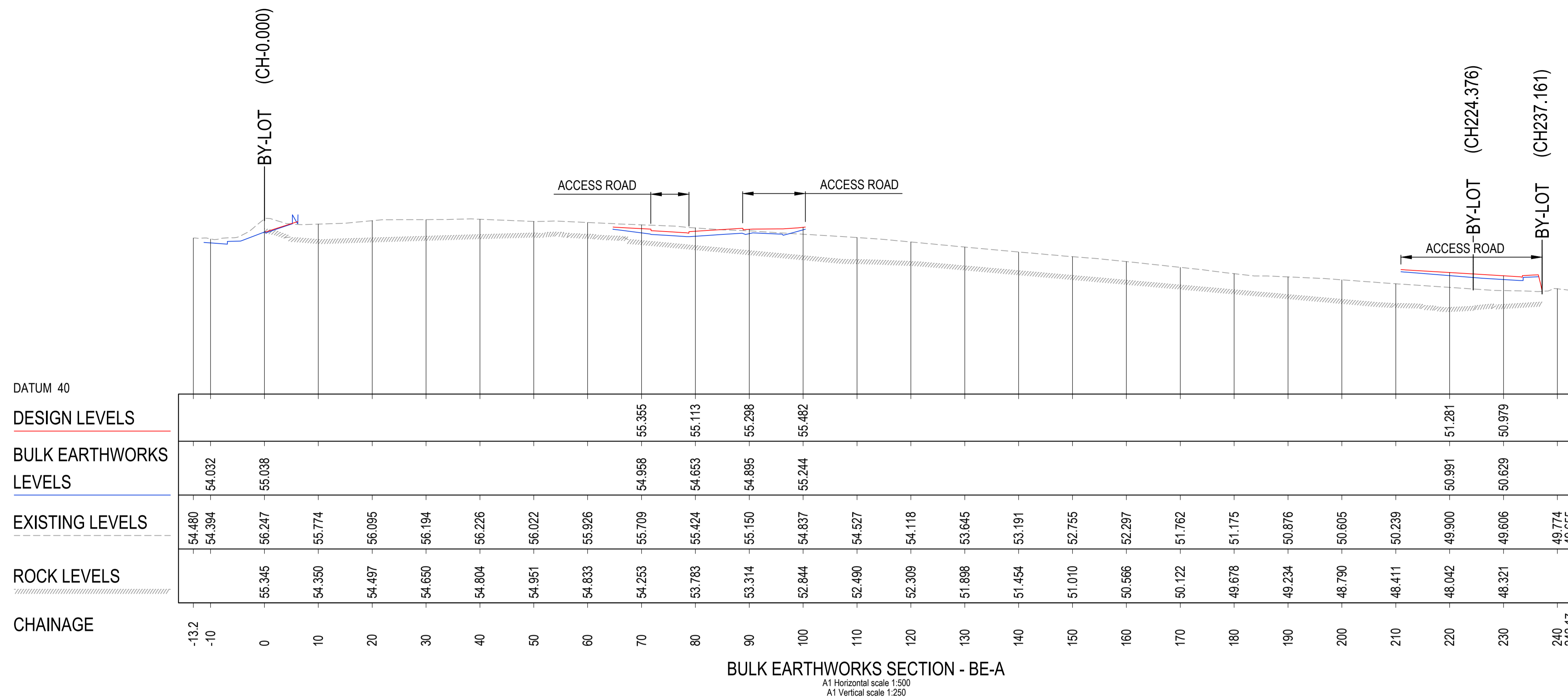
DRAWING NUMBER 130486-ACOR-CV-DWG-045001 ISSUE 2

PROJECT STATUS

NOT FOR CONSTRUCTION



REV	DESCRIPTION OF CHANGE	DATE	CHECKED	ISSUED
0	SSDA	15.08.2025	RB	GL
2	SSDA	02.02.2026	RB	JR



PRINT IN COLOUR

ARCHITECT
HDR
 Level 24, 25 Martin Place, Sydney NSW, 2000
 +61 2 9550 2666 (HDRinc.com)
 HDR Pty Limited ABN 76 158 075 220 trading as HDR

CLIENT
NSW Health Infrastructure
 Health Infrastructure, NSW
 Level 6, 1 Riverside Road
 St Leonards, NSW 2065
 T +61 2 9570 8622
 www.health.nsw.gov.au

PROJECT
 ROUSE HILL HOSPITAL - MAIN WORKS
 CORNER OF COMMERCIAL AND WINDSOR RD, ROUSE HILL, NSW 2155 AUSTRALIA

DRAWING TITLE
BULK EARTHWORKS SECTIONS SHEET 1

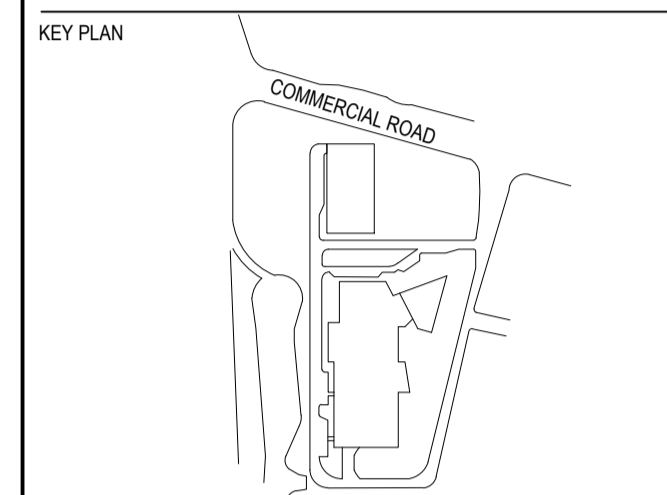
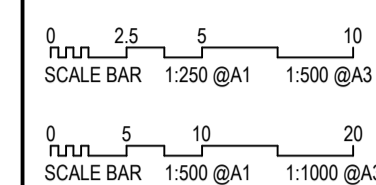
Drawn	Designed	Q.A. Check	Q.A. Date
RP	RB	GL	15.08.2025

SCALE AS SHOWN
 DRAWING NUMBER 130486-ACOR-CV-DWG-045101
 PROJECT STATUS
 PROJECT NUMBER
 ISSUE 2



NOT FOR CONSTRUCTION

NORTH POINT



REV	DESCRIPTION OF CHANGE	DATE	CHECKED	ISSUED
0	SSDA	15.08.2025	RB	GL
2	SSDA	02.02.2026	RB	JR

PRINT IN COLOUR

HDR
 Level 24, 25 Martin Place, Sydney NSW, 2000
 +61 2 9550 2666 | hdrinc.com
 HDR Pty Limited ABN 76 158 075 220 trading as HDR

CLIENT
NSW Health Infrastructure
 Health Infrastructure, NSW
 Level 6, 1 Riverside Road
 St Leonards, NSW 2065
 T: +61 2 9570 9422
 www.health.nsw.gov.au

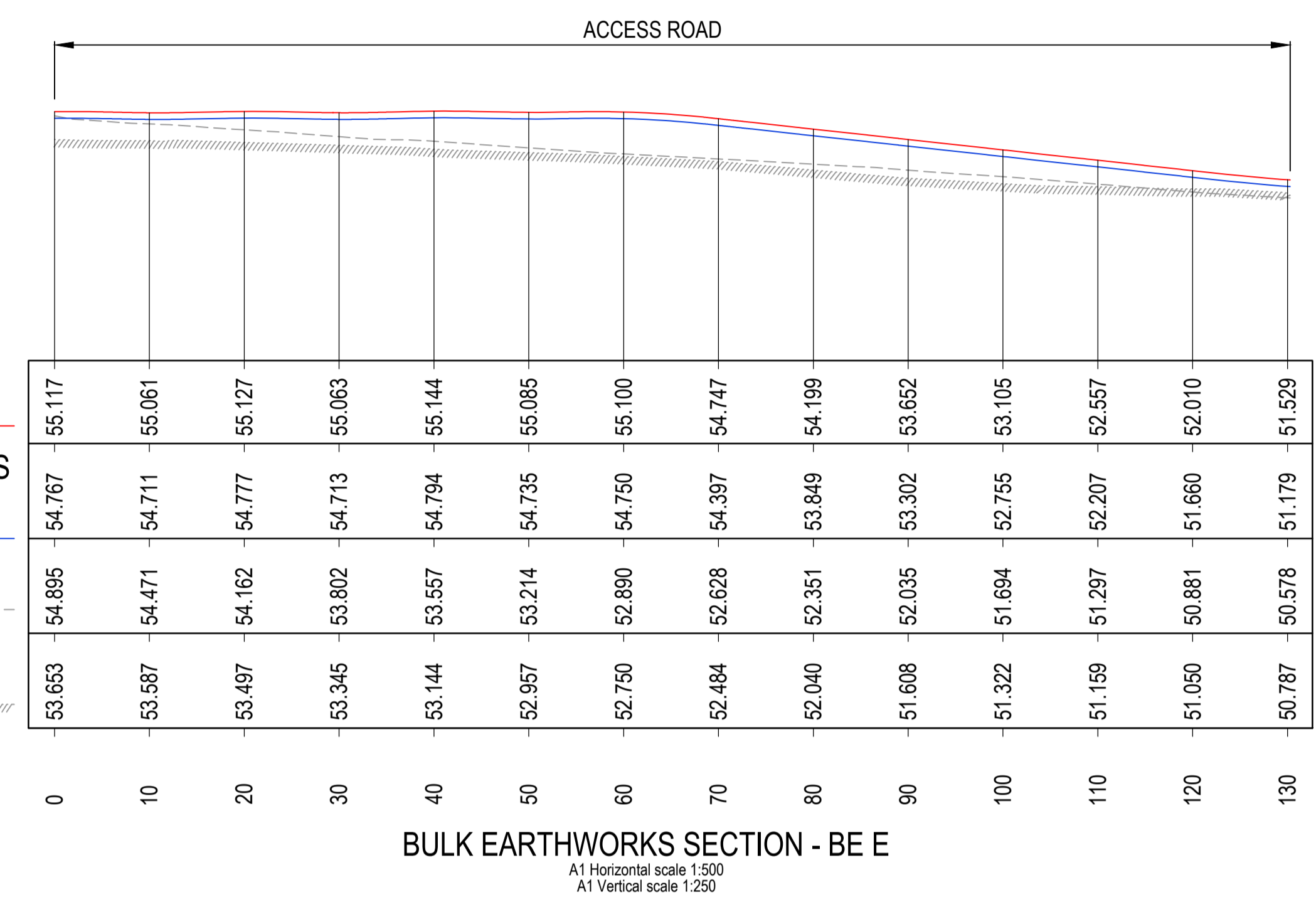
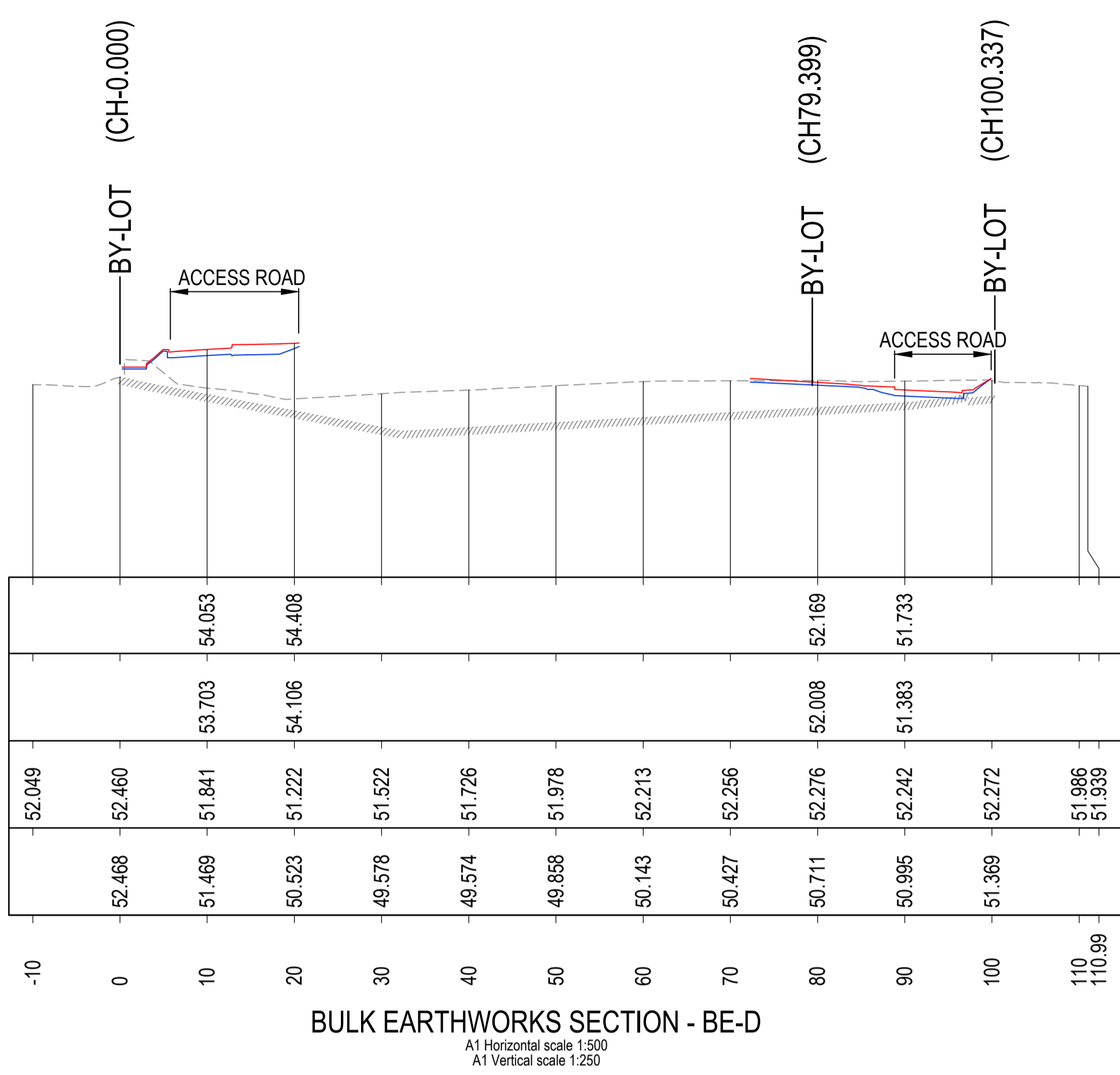
PROJECT
 ROUSE HILL HOSPITAL - MAIN WORKS
 CORNER OF COMMERCIAL AND WINDSOR RD, ROUSE HILL, NSW 2155 AUSTRALIA

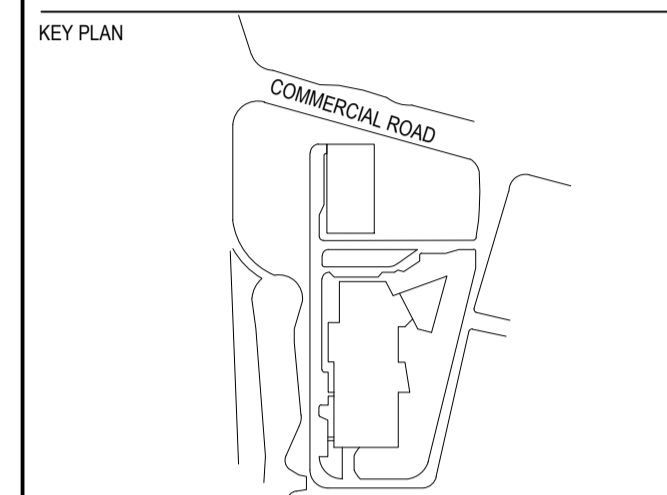
DRAWING TITLE
 SSDA
 BULK EARTHWORKS SECTIONS
 SHEET 2

Drawn	Designed	Q.A. Check	Q.A. Date
RP	RB	GL	15.08.2025

SCALE	PROJECT NUMBER
AS SHOWN	
DRAWING NUMBER	ISSUE
130486-ACOR-CV-DWG-045102	2

PROJECT STATUS
 NOT FOR CONSTRUCTION





REV	DESCRIPTION OF CHANGE	DATE	CHECKED	ISSUED
0	SSDA	15.08.2025	RB	GL
1	SSDA	28.08.2025	RB	GL
2	SSDA	02.02.2026	RB	JR

NOTES:
 1. REFER TO DRAWING 065601 FOR DETAILS.

PRINT IN COLOUR

ARCHITECT

HDR

Level 24, 25 Martin Place, Sydney NSW, 2000
 +61 2 9566 2666 | hdrinc.com
 HDR Pty Limited ABN 76 158 075 220 trading as HDR

CLIENT

NSW Health Infrastructure

Health Infrastructure, NSW
 Level 6, 1 Riverside Road
 St Leonards, NSW 2065
 T: +61 2 95705822
 www.health.nsw.gov.au

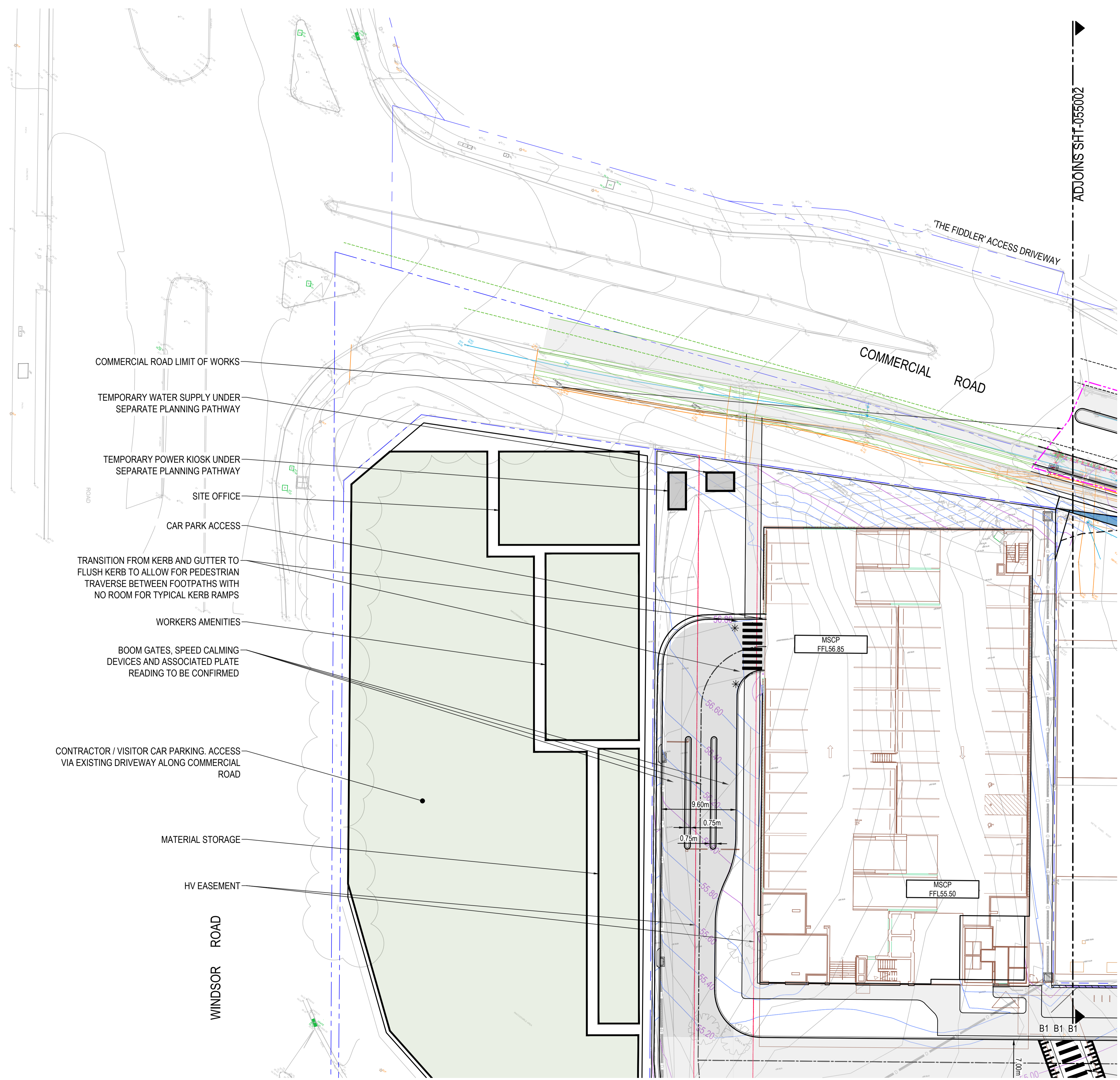
PROJECT
 ROUSE HILL HOSPITAL - MAIN WORKS
 CORNER OF COMMERCIAL AND WINDSOR RD, ROUSE HILL, NSW 2155 AUSTRALIA

DRAWING TITLE
 SSSA
 GENERAL ARRANGEMENT PLAN SHEET 1

Draw	Designd	Q.A. Check	Q.A. Date
RP	RB	GL	15.08.2025

SCALE 1:250
 DRAWING NUMBER 130486-ACOR-CV-DWG-055001
 PROJECT STATUS

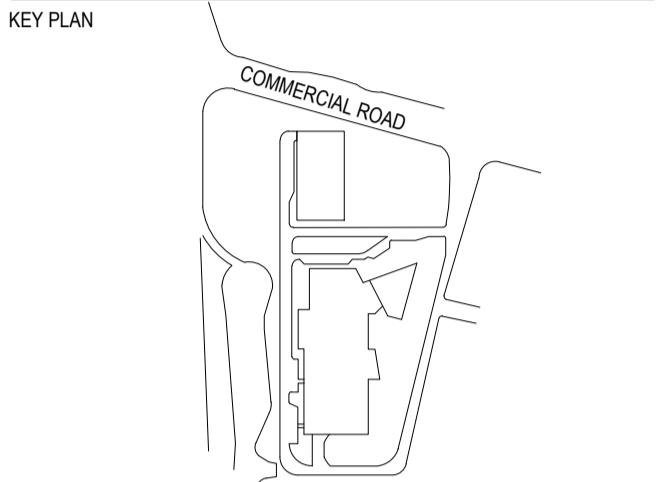
ISSUE 2
NOT FOR CONSTRUCTION



- COMMERCIAL ROAD LIMIT OF WORKS
- TEMPORARY WATER SUPPLY UNDER SEPARATE PLANNING PATHWAY
- TEMPORARY POWER KIOSK UNDER SEPARATE PLANNING PATHWAY
- SITE OFFICE
- CAR PARK ACCESS
- TRANSITION FROM KERB AND GUTTER TO FLUSH KERB TO ALLOW FOR PEDESTRIAN TRAVERSE BETWEEN FOOTPATHS WITH NO ROOM FOR TYPICAL KERB RAMPS
- WORKERS AMENITIES
- BOOM GATES, SPEED CALMING DEVICES AND ASSOCIATED PLATE READING TO BE CONFIRMED
- CONTRACTOR / VISITOR CAR PARKING. ACCESS VIA EXISTING DRIVEWAY ALONG COMMERCIAL ROAD
- MATERIAL STORAGE
- HV EASEMENT



ADJOINS SHT-055002



REV	DESCRIPTION OF CHANGE	DATE	CHECKED	ISSUED
0	SSDA	15.08.2025	RB	GL
1	SSDA	28.08.2025	RB	GL
2	SSDA	02.02.2026	RB	JR

NOTES:
 1. REFER TO DRAWING 065601 FOR DETAILS.

PRINT IN COLOUR

ARCHITECT
HDR
 Level 24, 25 Market Street, Sydney NSW, 2000
 +61 2 9550 2666 | hdrinc.com
 HDR Pty Limited ABN 76 158 075 220 trading as HDR

CLIENT
NSW Health Infrastructure
 Health Infrastructure - NSW
 Level 6, 1 Riverside Road
 St Leonards, NSW 2065
 T: +61 2 9570 9422
 www.health.nsw.gov.au

PROJECT
 ROUSE HILL HOSPITAL - MAIN WORKS
 CORNER OF COMMERCIAL AND WINDSOR RD, ROUSE HILL, NSW 2155 AUSTRALIA

DRAWING TITLE
 SSDA
 GENERAL ARRANGEMENT PLAN
 SHEET 2

Drawn	Designed	Q.A. Check	Q.A. Date
RP	RB	GL	15.08.2025

SCALE 1:250
 DRAWING NUMBER 130486-ACOR-CV-DWG-055002
 PROJECT STATUS PROJECT NUMBER
 ISSUE 2

NOT FOR CONSTRUCTION

