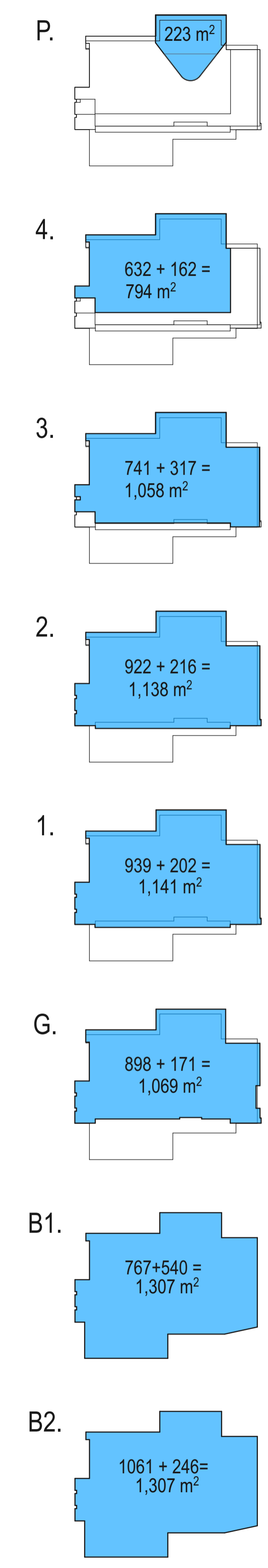


**PROPOSED ENVELOPE PLAN 1:250 @A1**



**GROSS FLOOR AREA - SERVICES + VOIDS + BALCONIES - 5960 m2\***  
**GROSS BUILDING AREA - 8037 m2\*\***

\*Gross Floor Area calculation based on Sydney LEP 2012 Definition.  
 \*\*Gross Building Area calculation based on UTS Design Guidelines Definition

Rev.	Description	Issue Date
1	MOD 1 SSD6746	20.08.2018
2	MOD 1 SSD6746 - COS Response	28.11.2018

**N**

Consultants  
 For all consultants contact details, Please refer to Page Coverage

Notes  
 Do not scale off drawings. Use figured dimensions only. Report any discrepancies to the architect. These designs, plans, specifications and the copyright therein are the property of Tonkin Zulaikha Greer Architects Pty Ltd, and must not be reproduced or copied wholly or in part without written permission of Tonkin Zulaikha Greer Architects Pty Ltd.

Project Name  
**UTS BLACKFRIARS INDUSTRY HUB**

**UTS**  
 UNIVERSITY OF TECHNOLOGY, SYDNEY  
 FACILITIES MANAGEMENT OPERATIONS  
 Tower, Building 1, Level 19, 15 Broadway  
 Broadway NSW 2007  
 Ph: 9514-2000 Fax: 9514-4690

Drawing Title  
**UTS BLACKFRIARS CAMPUS CB23**  
**A02 - PROPOSED BUILDING ENVELOPE PLAN**

FMU Project Number 03013-C-18			
Drawn By SB, JH, JB, KP	Checked RS, KL	Approved By TG	Date App. 00-00-18
Drawing Scale 1:250 @A1		Drawing Status DA	
UTS Drg File Name 70002		Rev No 2	

**A1**