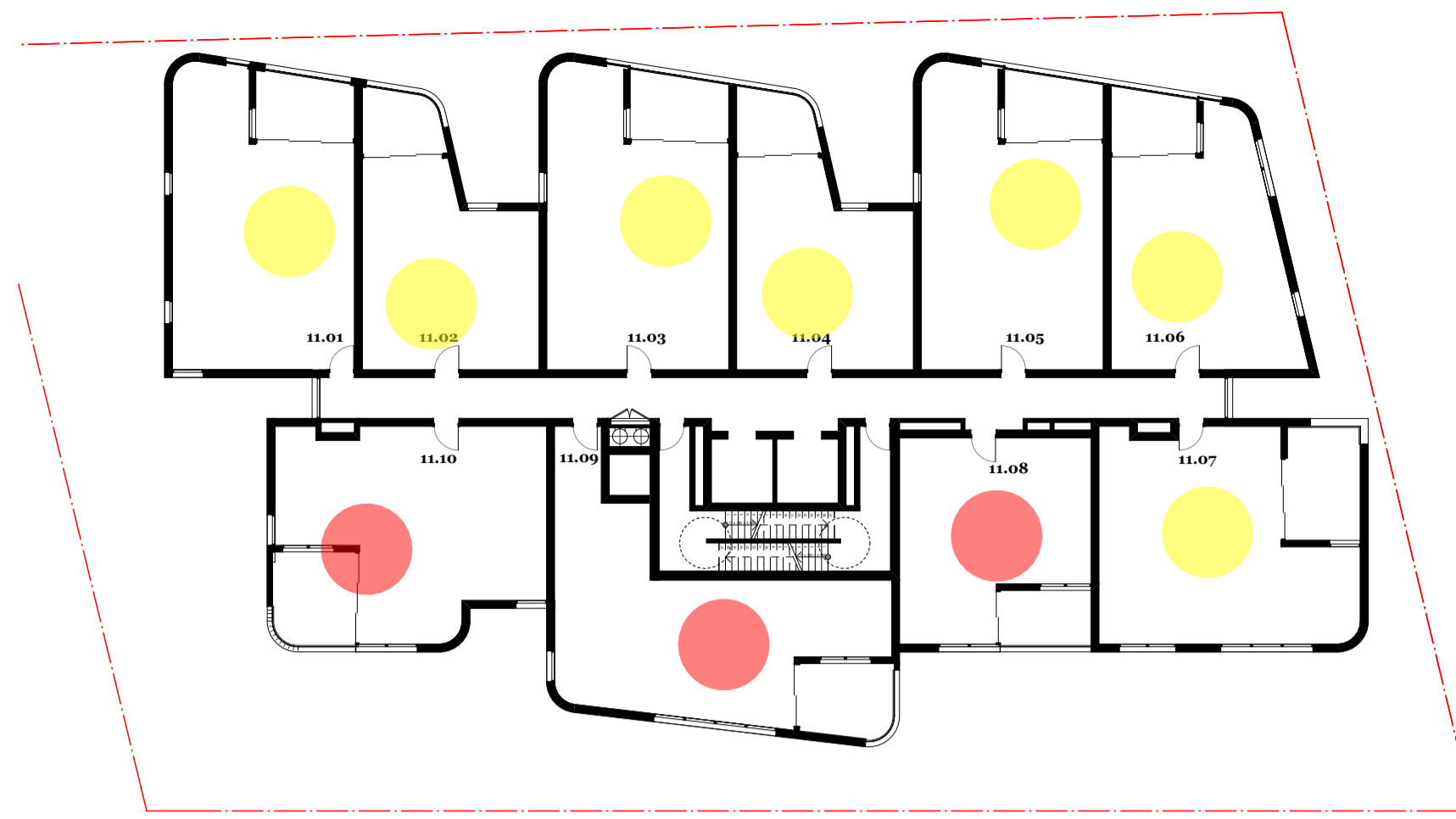


10. Level 10

**Units with less than 2 hours Solar Access**

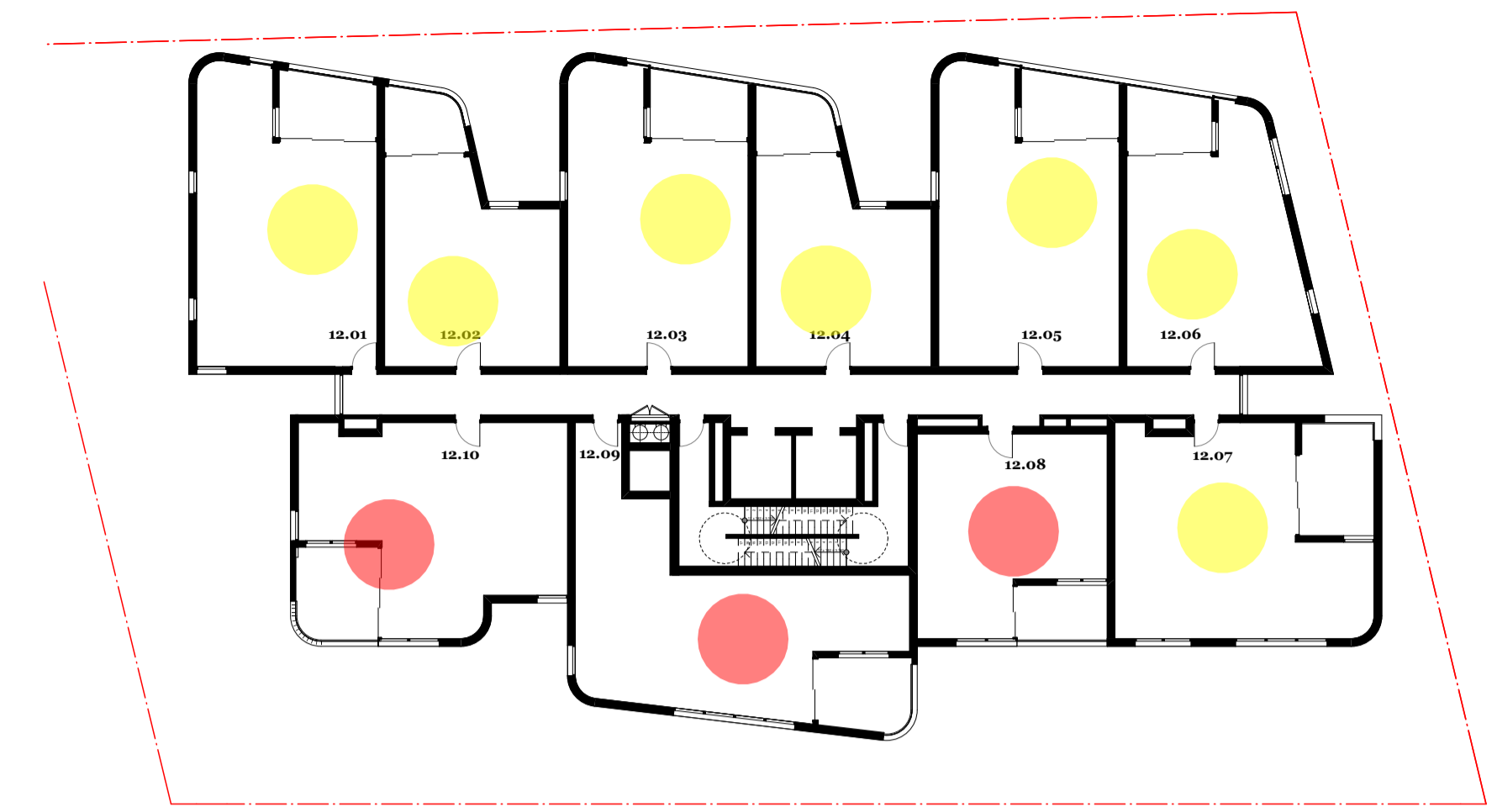
<b>Unit 10.08</b>	<b>Unit 10.09</b>	<b>Unit 10.10</b>
POS 45min	POS 45min	POS 10min
Living 45min	Living 45min	Living 10min



11. Level 11

**Units with less than 2 hours Solar Access**

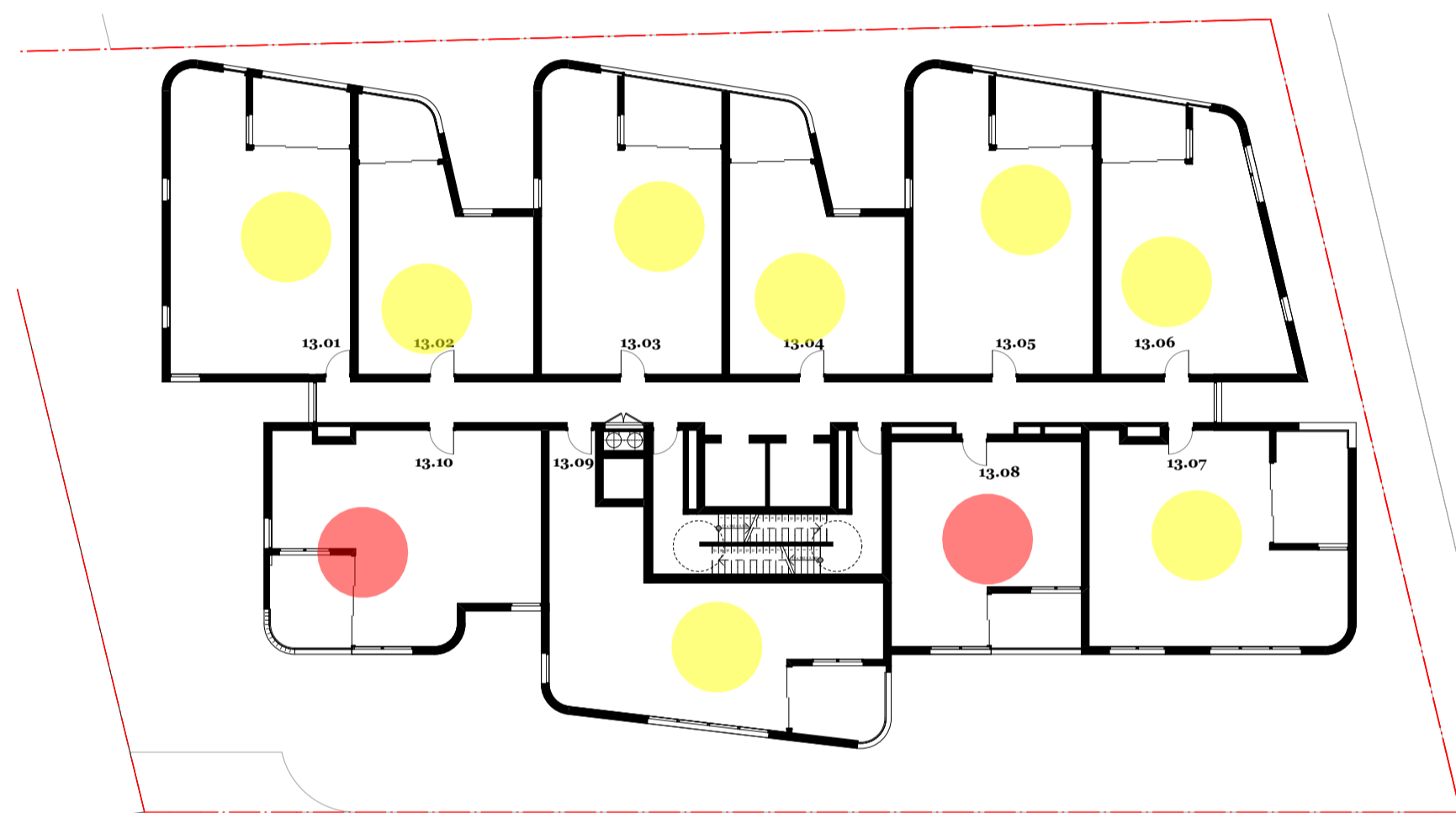
<b>Unit 11.08</b>	<b>Unit 11.09</b>	<b>Unit 11.10</b>
POS 45min	POS 1hr 15min	POS 10min
Living 45min	Living 1hr 15min	Living 10min



12. Level 12

**Units with less than 2 hours Solar Access**

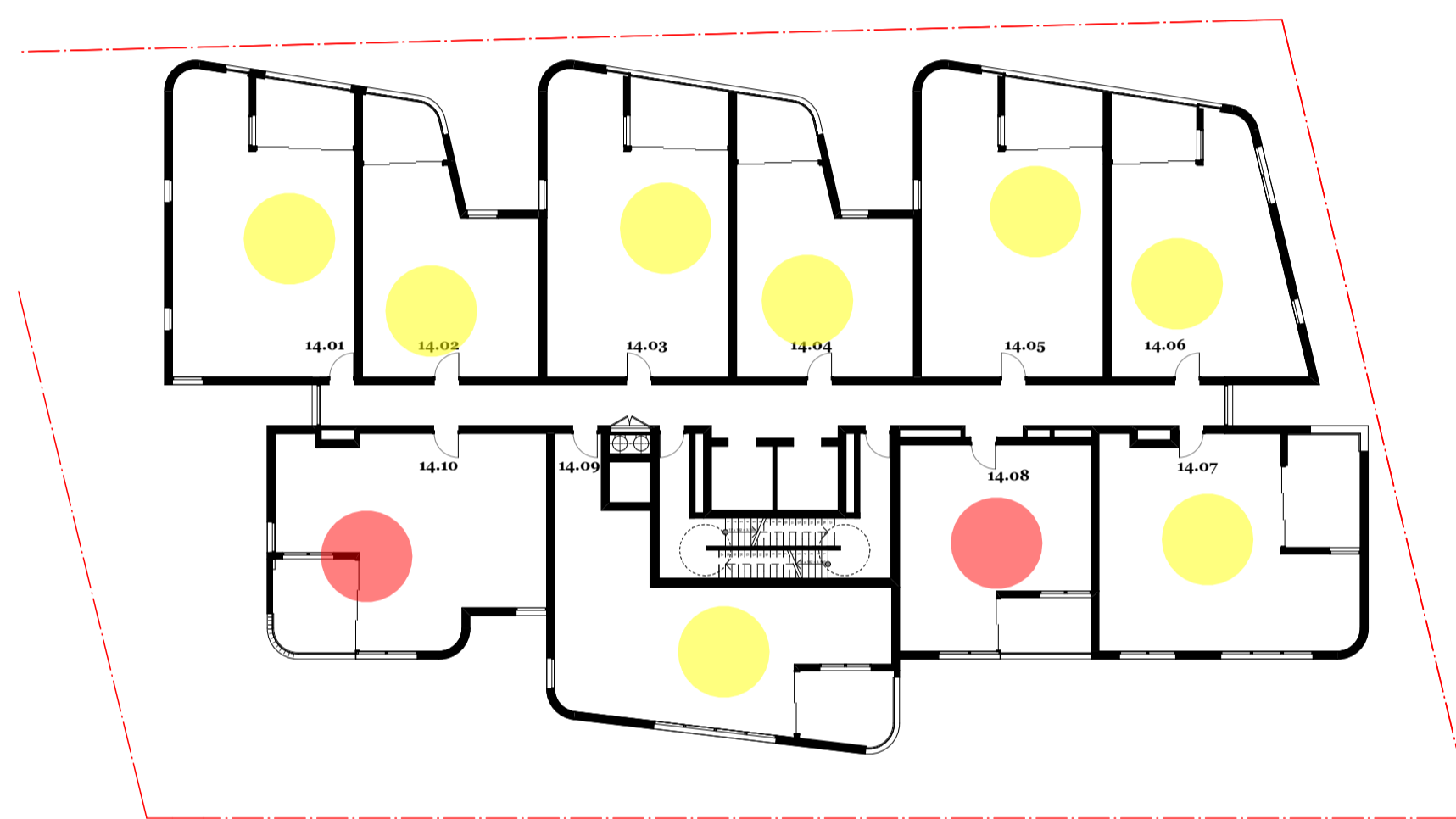
<b>Unit 12.08</b>	<b>Unit 12.09</b>	<b>Unit 12.10</b>
POS 45min	POS 1hr 30min	POS 10min
Living 45min	Living 1hr 30min	Living 10min



13. Level 13

**Units with less than 2 hours Solar Access**

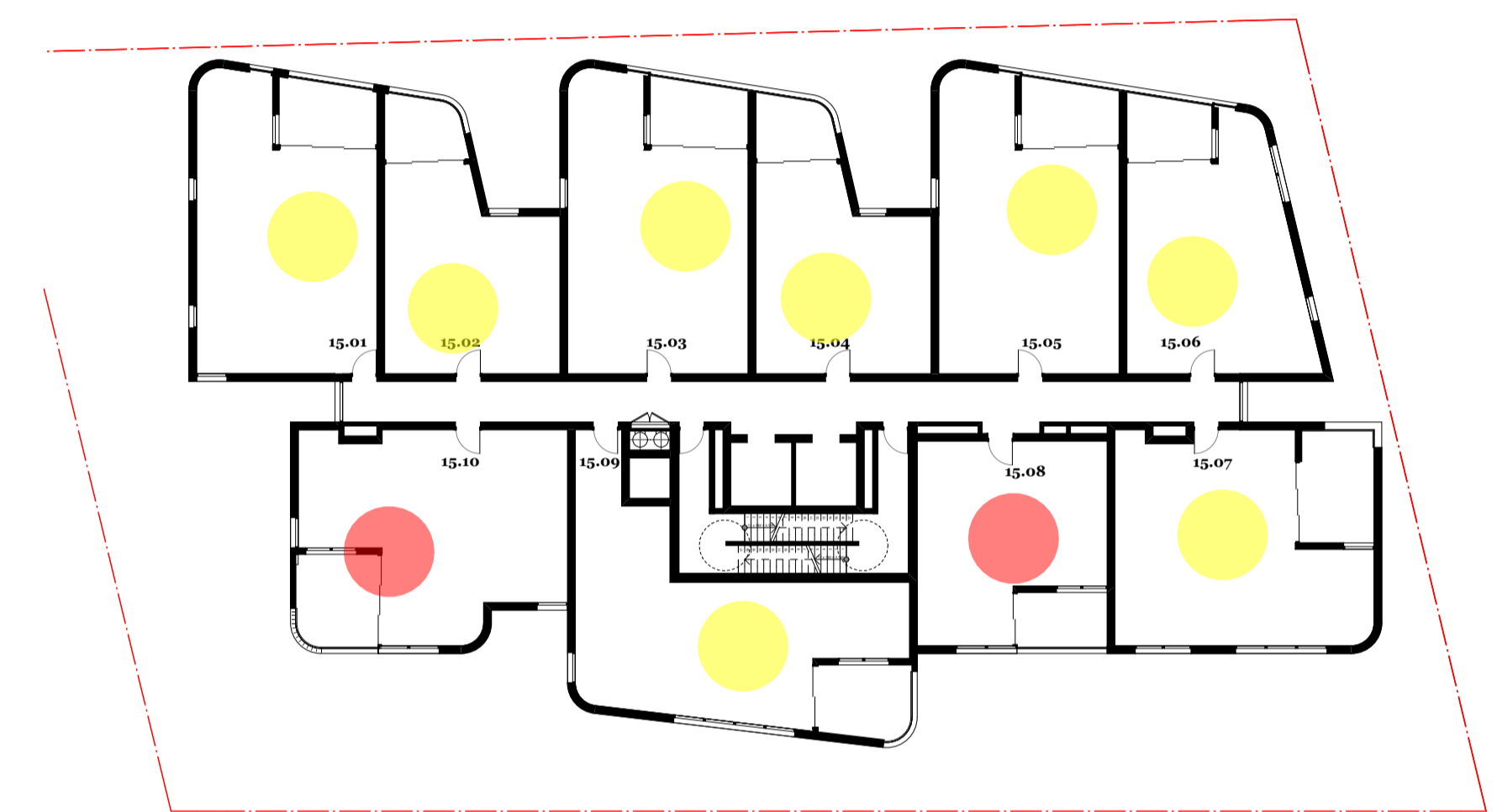
<b>Unit 13.08</b>	<b>Unit 13.10</b>
POS 45min	POS 10min
Living 45min	Living 10min



14. Level 14

**Units with less than 2 hours Solar Access**

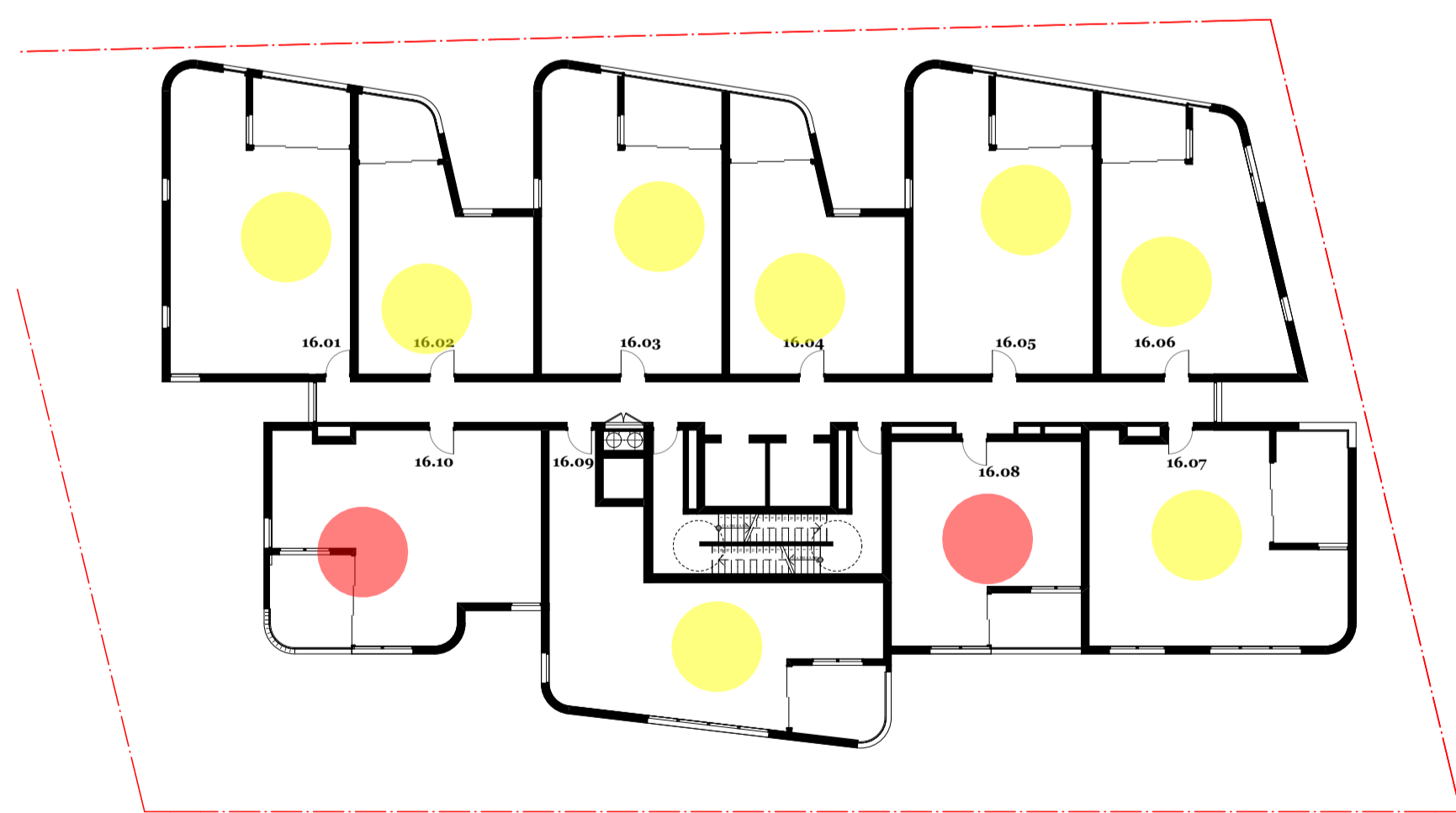
<b>Unit 14.08</b>	<b>Unit 14.10</b>
POS 45min	POS 10min
Living 45min	Living 10min



15. Level 15

**Units with less than 2 hours Solar Access**

<b>Unit 15.08</b>	<b>Unit 15.10</b>
POS 45min	POS 10min
Living 45min	Living 10min



16. Level 16

**Units with less than 2 hours Solar Access**

<b>Unit 16.08</b>	<b>Unit 16.10</b>
POS 45min	POS 10min
Living 45min	Living 10min



17. Level 17

**Units with less than 2 hours Solar Access**

<b>Unit 17.08</b>	<b>Unit 17.10</b>
POS 45min	POS 10min
Living 45min	Living 10min

**LEGEND**

- 2+ HR SOLAR ACCESS
- <2 HR SOLAR ACCESS
- 0 HR SOLAR ACCESS

**SOLAR ACCESS CALCULATION**

Ground Floor	0/0
Level 01	3/10
Level 02	4/10
Level 03	3/6
Level 04	3/6
Levels 05-12	56/80
Levels 13-16	32/40
Level 17	6/8

**Total** **107/160 (67%)**

**NO SOLAR ACCESS CALCULATION** **10/160 (6%)**

<b>Consultants</b>	<b>Access - Morris Goding</b> David Goding david@mgc.com.au 0407 246 115	<b>Building Services - Arrow</b> Brian Calvert bcalvert@arrow.com.au 0416 084 260	<b>Communication - Straight Talk</b> Jessica Stapleton jstaple@straight-talk.com.au 0433 922 069	<b>Fire - Core Engineering</b> Neil Campbell neil@coreengineering.com.au 0410 610 928	<b>Geotechnical - CES</b> Neil Campbell neil@cesgeotechnical.com.au 0433 922 069	<b>Heritage - Artefact</b> Sandra Wallace sandra.wallace@artefact.net.au 0403 956 086	<b>Surveyor - Norton Survey</b> Andrew Whitfield awhitfield@nortonsurvey.com.au 0418 225 072	<b>QS - WT Partnership</b> Paul Elphick paul@wtpartnership.com.au 0407 243 711	<b>Traffic - TTM</b> Callum Hutcheson callum@ttmgroup.com.au 0402 095 256	<b>Wind - Windtech</b> Simon Renald simon@windtechglobal.com 9993 9308
<b>Acoustic - Renzo Tomlin</b> Tony Wong tony.wong@renzotomlin.com.au 8218 0515	<b>Civil - ABC Consultants</b> Ryan Campbell ryan@abc-consultants.com.au 0492 343 139	<b>ESD - Northrop</b> Amir Elgisi amir@northrop.com.au 0492 343 139	<b>Flood - WMA Water</b> Catherine Gosman catherine@wma.com.au 9299 2855	<b>HAZMAT - Greencap</b> James Stewart james.stewart@greencap.com.au 0427 701 922	<b>Landscape - In View</b> Isabel Leter isabel@inviewdesign.com.au 0416 110 058	<b>Planner - Keylan</b> Michael Woodland michael@keylan.com.au 0448 726 214	<b>Site Contamination - JBS&amp;G</b> Daniel Denaro d.denaro@jbsg.com.au 0468 425 921	<b>Waste - TTM</b> Arthur Stanniton arthur@ttmgroup.com.au 071 327 9500	<b>St George Community Housing</b>	<b>SGCH</b>

DKO Architecture (NSW) Pty Ltd  
119 Redfern Street  
Redfern, NSW 2016  
T +61 2 8346 4500  
info@dko.com.au  
www.dko.com.au  
ABN: 81956706590

Client: SGCH

Project Name: 11 Gibbons Street, Redfern, NSW 2016

Project Number: 11929  
Drawing Name: 1:250@A1  
Scale: February 2019

Drawing Number: **DA6001**  
Revision: **C**