

SSD - 70557215

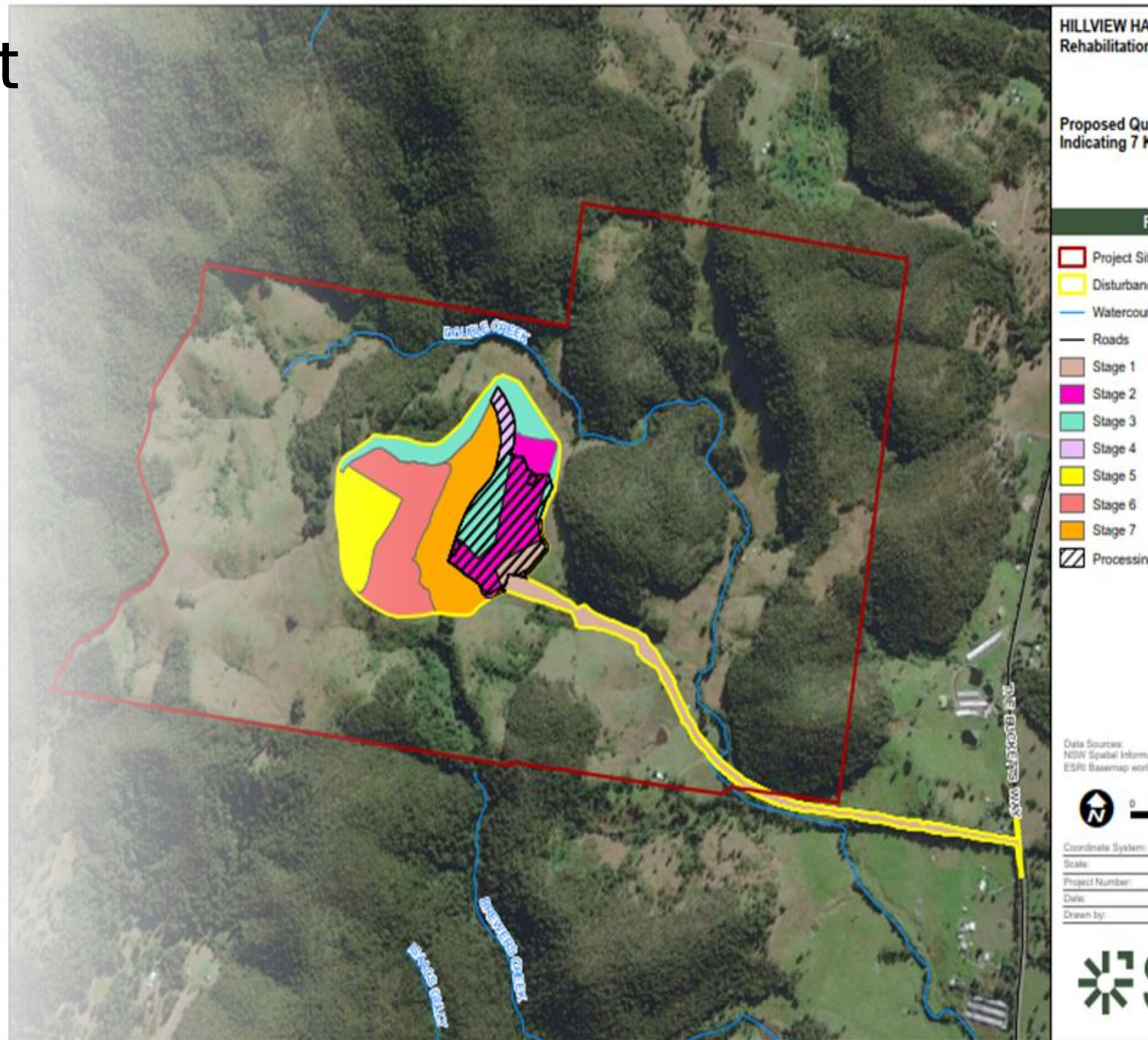
Hillview Hard Rock Quarry

67 Maytoms Lane, Booral NSW
Coastwide Materials Pty Ltd



Overview of the Project

- The proposal is for a Hard Rock Quarry for the extraction of Rhyolite. Proposed extraction rates and volumes are up to 45 million tonnes in total, with up to 1.5 million tonnes/annum over a 30 year period.
- The total quarry disturbance footprint will occupy approximately 48ha, of the 400.3ha property.
- The development triggers State Significant Development (SSD) under Schedule 1, Section 7 – Extractive Industries of State Environmental Planning Policy (Planning Systems) 2021 (Planning Systems SEPP).
- The proposal includes:
 - Construction of the intersection at the junction of The Buckets Way and Maytoms Lane;
 - Construction of a haul road to the processing pad and extraction areas, including a creek crossing over Double Creek;
 - Excavation to RL95m for the creation of the processing pad;
 - Site preparation works and installation of infrastructure and supporting services to facilitate operations at the site, including: site office, tertiary and secondary crushers, sand wash plant, on-site dams, stockpiles, car parking area, and an onsite sewage management system;
 - Staged progression of the quarry works, with seven (7) stages in total;
 - Transport of materials along The Bucketts Way, mainly towards the intersection with the Pacific Highway then along the Pacific Highway
 - Rehabilitation works within the quarry pit and retention of the haul road.



During the initial years of the quarry; it is not expected that extraction amounts will reach 1.5 million tonnes/annum, with site establishment works to be completed prior to the main extraction activities commencing. These establishment works will include the new intersection of The Bucketts Way and Maytoms Lane; construction of the main access to the processing pad; creation of the processing pad; and installation of other infrastructure including site offices and facilities, weighbridge, and processing machinery. These construction stages will result in the winning of material; with a portion to be used in site establishment activities and the remainder to be exported from the site.

The extraction area has been located to avoid the more sensitive areas of the site, and the only area where the works intersect with Double Creek is where the proposed access road crosses this water course. The pit shell has been specifically designed to avoid areas of high biodiversity value such as larger patches of forest with high vegetation integrity. In particular, a small gully containing rainforest vegetation (PCT 3436) has been avoided and will be retained on-site. The pavement width of the haul road has also been reduced from 14m down to 10m, reducing the amount of vegetation clearing required to facilitated access for the quarry.

The processing pad will be constructed to a final RL of 95m AHD and will accommodate the main operations of the proposal including siting of the site office, tertiary and secondary crushers, sand wash plant, on-site dams, stockpiles and car parking area. The site office will comprise demountable buildings, which are considered appropriate given the office building will not be visible from the public domain.

A 10m wide internal haul road will be constructed which will facilitate access to areas of the site for extraction as well as for the Run of Mine (ROM) pad which will allow extracted material to be put through the primary crusher located at RL 105m AHD and then conveyed down to the processing pad (RL 95m AHD) where material will pass through secondary and tertiary crushers and be stockpiled before being transported offsite.

The staging has been specifically designed with acoustic and visual mitigation measures in mind. In effect, the operations will commence at the eastern extent of the pit (processing pad), from which a haul road will circle around to to the western extent, with extraction activities then being carried out so as to progress in an easterly direction, back toward the processing pad. This design ensures that operations, and therefore noise, dust, and visual impacts are screened by the working face of the extraction area.

Project Element	Summary of Project	
Proposed Development	Hard Rock Quarry	
Extraction Method	Traditional drill and blasting over extraction area of 48ha	
Resource	Quarry extraction of Rhyolitic Tuff from RL 205m AHD down to final RL 95m AHD	
Disturbance Areas	Total disturbance area	48ha
	Stage 1 disturbance area	9.5ha
	Stage 2 disturbance area	2.4ha
	Stage 3 disturbance area	10.6ha
	Stage 4 disturbance area	1.1ha
	Stage 5 disturbance area	5.4ha
	Stage 6 disturbance area	9.6ha
	Stage 7 disturbance area	9.4ha
Annual Production	Up to 1.5 million tonnes	
Quarry Life	30 years	
Management of Mining Waste	Managed and minimised by retaining resources that have value for reuse on-site, or collected by an appropriately licensed contractor and transported to appropriately licensed facility for recycling or disposal.	
General Infrastructure	Access roads including intersection works, electricity supply, on-site sewer management, weighbridge and site office.	
Product Transport	Transport by truck with average of 272 movements (136 in and 136 out) a day.	
Water Management	An array of water storages are proposed to contain and control runoff at the project – including sediment dams, water storage dams and pit sump.	
Operational Workforce	30 full time employees, anticipated to comprise quarry manager, supervisors, drivers, weighbridge operator and administration clerk.	
Hours of Operation	Extraction and processing operations	Monday to Saturday 6:00am to 10:00pm
	Internal product transfers to stockpiles	Monday to Saturday 6:00am to 12:00am (midnight)
	Haulage from and to the development site	Monday to Saturday 7:00am to 6:00pm
	Blasting activities	Monday to Friday 9:00am to 4:00pm
	Maintenance activities	24 hours 7 days a week
Site Rehabilitation	Progressive	
Capital Investment Value	\$39,000,000 excl GST	

Environmental Impacts and Mitigation Measures

Biodiversity (Appendix F of EIS)

- No threatened plant species listed under the *NSW Biodiversity Conservation Act 2016* (BC Act) or the *Commonwealth Environment Protection and Biodiversity Conservation Act 1999* (EPBC Act) were detected. Two Threatened Ecological Communities (TECs) listed under the BC Act have been identified within or adjacent to the site. Five threatened fauna species detected. One Matter of National Environmental Significance (MNES), the Koala, listed as 'Endangered' under the EPBC Act, was recorded on site. A migratory species, Latham's Snipe, listed under the EPBC Act was detected during the assessment. No other listed threatened species were recorded.
- The habitats to be removed for the Koala and other listed threatened species that could potentially occur are not considered to be important to the long-term survival of these species, given the lack of evidence for these species and the retention of similar habitat across the periphery of the site. Overall, the proposed quarry is not likely to have a significant impact on any MNES listed under the EPBC Act. However, given the presence of the Koala and likely presence of the Grey-headed Flying Fox (*Pteropus poliocephalus*), listed as 'Vulnerable' under the EPBC Act, a referral has been submitted to the Department of Climate Change, Energy, the Environment and Water (DCCEEW).
- Avoidance measures have been incorporated into the design and layout of the proposed quarry. The pit shell has been specifically designed to avoid areas of high biodiversity value such as larger patches of forest with high vegetation integrity. In particular, a small gully containing rainforest vegetation (PCT 3436) has been avoided and will be retained on-site. The residual impacts of the proposed development (after application of impact avoidance and mitigation measures) consist of the permanent removal of 10.59ha of native vegetation.
- A total of 250 ecosystem credits and species credits for 11 candidate species has been determined to be required for the proposed development.



Biodiversity Development Assessment Report

Hillview Hard Rock Quarry

Coastwide Materials Pty Ltd

11 Lucca Road
Wyong NSW 2259

Prepared by:

SLR Consulting Australia Pty Ltd

10 Kings Road, New Lambton NSW 2305,
Australia

SLR Project No.: 630.V12117.00600

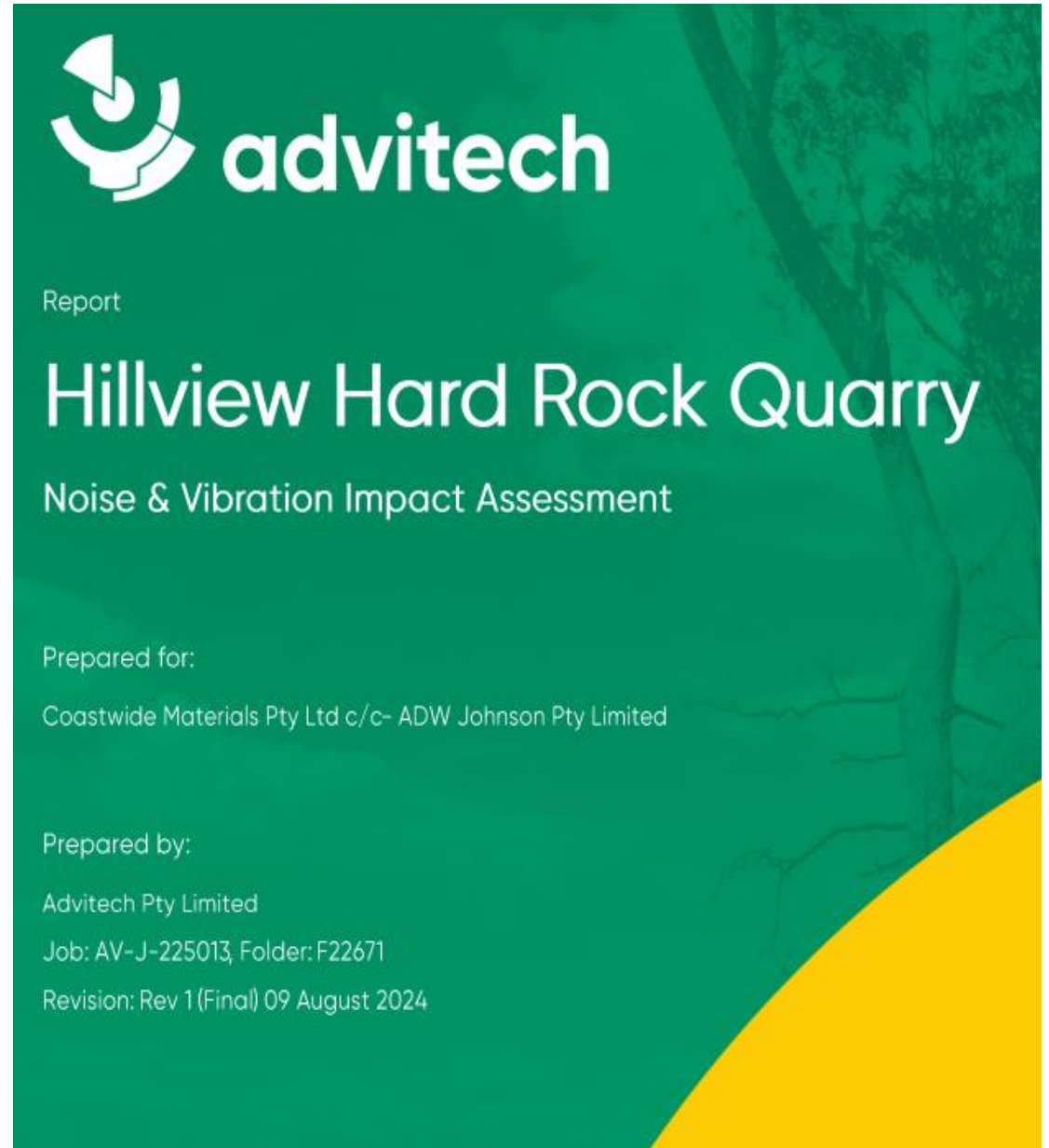
1 July 2024

Revision: 2.0

Environmental Impacts and Mitigation Measures

Noise and Blasting (Appendix G of EIS)

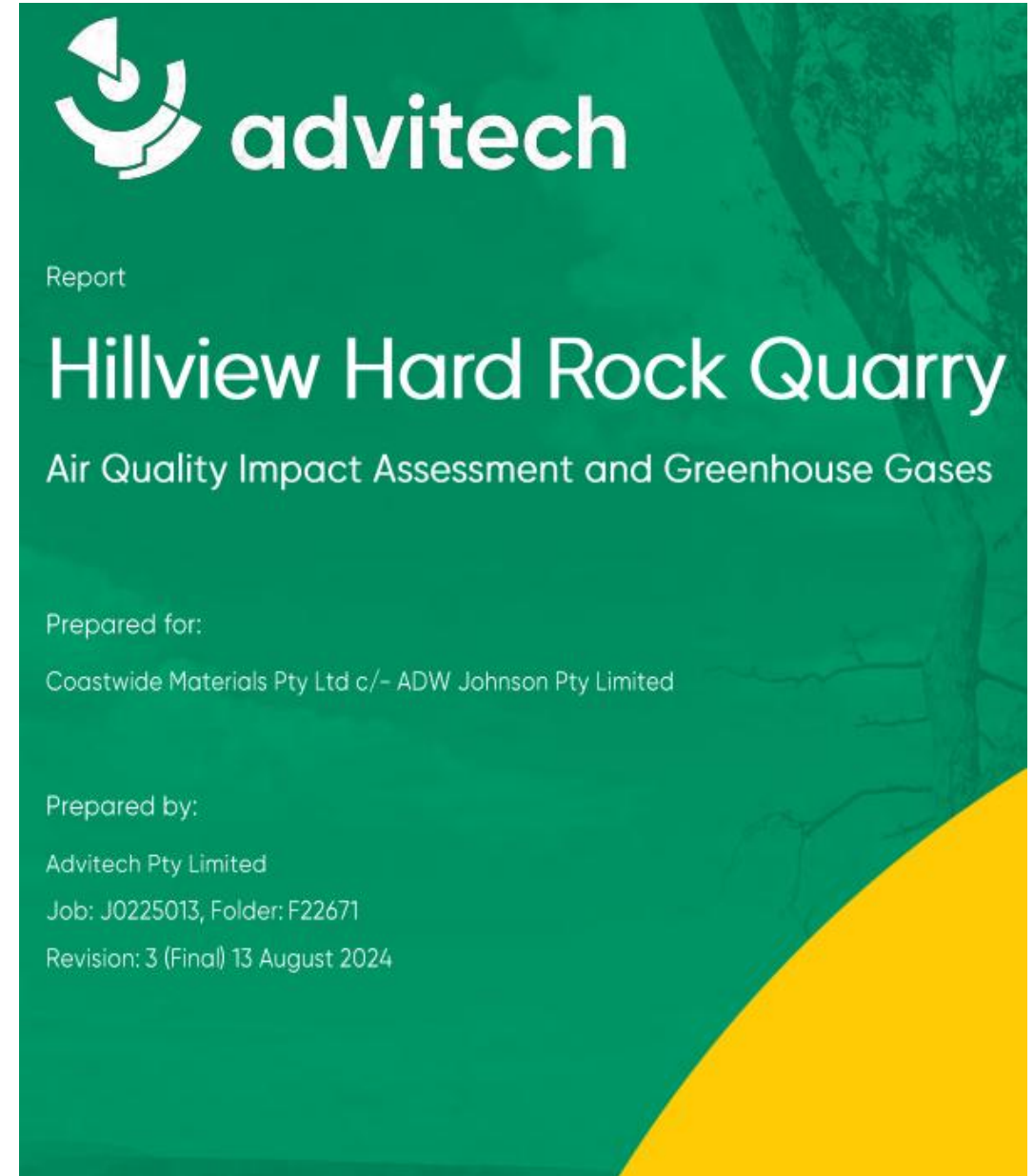
- Construction noise management level noise goals have the potential to be intermittently exceeded throughout development of the site at some residential receivers. As such, the proposed construction works shall require noise management by investigation and application of all feasible and reasonable noise mitigation work practices, to minimise impact on surrounding receivers. It is noted that these exceedances are only during the construction phase and not the ongoing operation of the quarry.
- A review of operational noise modelling under enhanced meteorological conditions indicates that the proposed operations will generate offsite noise levels below the project trigger noise level (PTNL) at all receivers, during the day period, however; control measures and operational restrictions on mechanical plant items have been provided to result in operational compliance for both evening and night periods. Site activities may well be audible at some locations given the characteristics of the receiving environment. It is thus recommended that measures be implemented to ensure timely and effective response to any concerns raised by adjacent sensitive receivers.
- Airblast overpressure levels are expected to be below the ANZECC guidance values at all receivers. The limiting charge size has been specified in the body of the Acoustic Assessment to result in the airblast overpressure remaining below the 115dB annoyance threshold at modelled receivers. The result of the assessment indicates that, based on the observed separation distances, ground vibration levels are unlikely to exceed the criteria for human annoyance at sensitive receivers adjacent to the blast site.



Environmental Impacts and Mitigation Measures

Air Quality (Appendix H of EIS)

- A 'Level 2' analysis including the assessment of cumulative air quality impacts for PM10 (24 hour averaging period) indicates that quarry operations will be primarily below NSW EPA guidelines. Any exceedances that may occur will be: either at or slightly exceeding the guideline for PM10 24 hour averaging period (50.0ug/m³); at a limited number of receivers in the vicinity of the quarry; and likely attributed to elevated background concentrations rather than significant incremental contribution from the proposed quarry development.
- Worst case scenario modelling for the proposed development indicated that the construction and operation of the proposed quarry will result in incremental increases in particulate matter and dust deposition at surrounding sensitive receivers. These increases were predicted to result in exceedances of the NSW EPA assessment criteria for the PM10 dust component, 24 hour averaging period and for both the construction and operation scenarios, and whilst conducting a 'cumulative assessment'.
- It should also be noted that the exceedances were obtained whilst incorporating many conservative assumptions into the modelling including machinery operating for 100% of the time, which is unlikely to happen in practice. Based on this assumption and other considerations incorporated into the conservative modelling approach adopted, the exceedances are unlikely to occur on a regular basis. Additional dust mitigation measures at the quarry operations, if implemented by the site owner, should further reduce the likelihood of dust exceedances at sensitive receivers in the vicinity.
- Hillview Quarry is expected to generate approximately 299,123t of CO₂e GHG emissions over the life of the development. Operating onsite equipment is the primary source of GHG emissions, and from Scope 1, 'direct' emissions (and primarily from the operational period of the quarry). This total GHG amount is also based on conservative assumptions, and maximum operating conditions over the expected life of the quarry. Reduction of emissions from machinery and transportation will result in a net reduction of GHG emissions and economic savings due to reduced fuel use.



Environmental Impacts and Mitigation Measures

Water (Appendix I-J of EIS)

- Site Water Balance: The on-site Water Management System (WMS) is predicted to interact with groundwater inflows, which are expected to gradually increase; likely peaking when the final landform is established. A Licenced Discharge Point (LDP) will be established at the Farm Dam when an EPL is issued for the proposed development, and on-site water storages will require ongoing management through implementation of a set of Dam Operating Rules.
- Water Licensing and Water Sharing Plans: The proponents WAL (number 44439) is for 100 units from the New England Fold Belt Coast Groundwater Source. Based on calibrated inflow predictions, the WAL will be adequate until Stage 6 of the proposed development, to cover groundwater inflows to the quarry pit. A further water allocation is likely to be required at this stage, and as such, the proponent would be required to obtain an additional Water Access Licence for up to approximately 260ML/a to cover transient inflows at the start of both Stages 6 and 7. However this can be monitored and reassessed during the first five stages.
- Water Supply: Water used during the construction phase will be accessed from existing farm dams within the site as permitted under harvestable rights, brought to site in water tankers and sourced from site water storages as they are developed. Operational water requirements for the proposed development have been estimated at 1 to 1.5ML/day.
- Flooding: The site is unaffected by flood water up to and including the 1% AEP flood. The proposed development does not affect the flood behaviour along Double Creek, and there will be no increase in peak flows, velocities or depths either upstream or downstream of the site. The proposed Maytoms Lane crossing will not increase afflux, overland and in-stream velocities or flood hazard.



Hillview Quarry EIS

Groundwater Assessment

Coastwide Materials Pty Ltd

11 Lucca Road, Wyong NSW 2259
Australia

Prepared by:

SLR Consulting Australia

10 Kings Road, New Lambton NSW 2305,
Australia

SLR Project No.: 660.30262.00000

21 June 2024

Revision: 2.0



Hillview Hard Rock Quarry

Surface Water Assessment

Coast Wide Materials Pty Ltd

11 Lucca Road
Wyong NSW 2259

Prepared by:

SLR Consulting Australia

10 Kings Road, New Lambton NSW 2305,
Australia

SLR Project No.: 630.V12117.00200

27 June 2024

Revision: v0.5

- **Quality and Quantity of Surface and Ground Water:** The primary risk to surface water associated with the proposed development is ground disturbance, with a high potential for sediment laden water. However, through the implementation of erosion and sediment control measures, and a Water Management Plan, the potential environmental impact to surface water is considered very low and manageable.
- Potential changes to groundwater levels, flow, and surface water-groundwater interactions are likely to occur during operation of the proposed development. The quarry is predicted to act as a regional sink in the water table, and therefore offsite migration of concentrations within the quarry footprint is generally considered low risk to groundwater. However, any contamination of groundwater outside of the groundwater drawdown radius (i.e., in vicinity of haul road) could migrate through the subsurface to downgradient water receptors. Where quality impacts exist, they are anticipated to be minor due to the short-term (temporary) nature of quality impacts in the water environment where attenuation is anticipated. Post-closure, quality impacts are expected to be less than that during operation as all the activities and materials that pose a water quality risk will be removed from the site.
- **Aquifers:** The proposed development is not likely to have a significant impact on groundwater levels or flow in the alluvial floodplain deposits aquifer associated with the Karuah River. This is supported conceptually, since the dewatered area is predicted to contribute a relatively limited volume of groundwater throughflow to the alluvial floodplain deposits, in comparison to the contribution of other groundwater recharge process across the catchment.
- **Water Management:** Without incorporation of suitable mitigation measures into the proposed development, the construction and operation of the proposed quarry including road access, have potential to impact on downstream watercourses and waterbodies. As the footprint of the extraction area increases more rainfall is captured and this additional rainfall needs to be appropriately managed. There is also a complementary increase in water demand for use in dust suppression and for processing of quarry products. The WMS for the proposed development will include water infrastructure to capture, store, treat and discharge surface water.
- A Wastewater Management System (WWMS) for the development is proposed to the north of the office building, with the site suitable for a wide range of onsite wastewater management options. The treatment system is to have a minimum treatment capacity of 1,200L/day.



Hillview Quarry EIS

Groundwater Assessment

Coastwide Materials Pty Ltd

11 Lucca Road, Wyong NSW 2259
Australia

Prepared by:

SLR Consulting Australia

10 Kings Road, New Lambton NSW 2305,
Australia

SLR Project No.: 660.30262.00000

21 June 2024

Revision: 2.0



Hillview Hard Rock Quarry

Surface Water Assessment

Coast Wide Materials Pty Ltd

11 Lucca Road
Wyong NSW 2259

Prepared by:

SLR Consulting Australia

10 Kings Road, New Lambton NSW 2305,
Australia

SLR Project No.: 630.V12117.00200

27 June 2024

Revision: v0.5

Environmental Impacts and Mitigation Measures

Heritage (Appendix K of EIS)

- The results of the assessment and survey are consistent with the predictive model and there is little to no potential for in situ cultural materials to be present in the crest and slopes within the project area, whereas, there is potential for cultural materials to be present along the 4th order creek (identified PAD).
- Two test pits were therefore conducted within PAD1. No archaeological sites were identified. Soil horizon A and top of horizon B contained significant evidence of past land uses with the complete mixing of the A horizon with the clays of the B horizon. Very few rocks were present and there is no evidence of stratigraphy and the evidence indicates the PAD area has been subject to high intensity impacts and as such the PAD is identified as a highly disturbed deposit with little to no likelihood of in situ deposits. Due to the highly disturbed nature of the area, the area subject to test excavation cannot be reassessed or compared to other assessments.

Coastwide Materials Pty Ltd

M

Hillview Hard Rock Quarry, Booral

LGA: MidCoast

**Aboriginal Cultural Heritage Assessment (ACHA)
Archaeological Test Excavation**

21 November 2024

McCARDLE CULTURAL HERITAGE PTY LTD

ACN 104 590 141 • ABN 89 104 590 141

PO Box 166, Adamstown, NSW 2289

Mobile: 0412 702 396 • Email: penny@mcheritage.com.au

Environmental Impacts and Mitigation Measures

Traffic and Transport (Appendix L of EIS)

- The proposed development results in a small increase to the surrounding traffic network volumes and will not have an adverse impact on major traffic flows when considered in isolation. There is the potential for passing background traffic growth along the Pacific Highway to make the right turn out onto the Pacific Highway from The Buckets Way difficult for traffic of the proposed development at peak times, but there is an alternative route that has been proposed to ameliorate any externalised impacts of the subject development upon this intersection in the future.
- There is adequate room on-site to provide informal parking facilities for both staff and heavy vehicles traffic. The largest vehicle that will travel to the site is a 19m length Articulated Vehicle. The proposed internal access road, including Maytoms Lane allows for an 8m wide road, inclusive of 1m wide unsealed road shoulders on both sides of the road. This design is adequate to allow two-way passing of heavy vehicles. All heavy vehicles will predominantly arrive from the south and travel from the development to the south towards Sydney, the Hunter and Central Coast. The exception to this is occasionally, vehicles will arrive from the south and depart to the north to travel to Stroud, but this will be a very rare occasion and generally will only be one or two vehicles in any given day.
- The intersection of The Bucketts Way/Maytoms Lane has been assessed, and it is recommended that the future layout include a short deceleration left turn lane into Maytoms Lane and a basic right turn (BAL) treatment. Based upon AUSTRROAD turn warrants, the minimum requirements to be provided are basic right and left turn treatments. As such, these recommended road treatments exceed requirements outlined in Austroads and is recommended due to the associated higher levels of heavy vehicle traffic associated with the proposed development.
- The overall intersection geometry in terms of safety with reference to sight lines is acceptable and it is recommended that regular understorey trimming of trees located within the road reserve occurs to ensure unobstructed sight lines are provided. The existing 85th percentile road speeds of 100km/h, which requires 248m of sight distance, which is achievable.
- Laden trucks will travel between Maytoms Lane and the intersection of The Bucketts Way and the Pacific Highway at Twelve Mile Creek. Use of this section of The Bucketts Way will result in liability for payment of charges to both Mid-Coast Council and Port Stephens Council (PSC), with this part of the route lying partially within both LGAs. These developer contribution payments will go towards repair works to the road.

TRAFFIC & PARKING IMPACT ASSESSMENT OF PROPOSED HARD ROCK QUARRY AT 67 MAYTOMS LANE, BOORAL



Address: Shop 7, 720 Old Princes Highway Sutherland NSW 2232
Postal: P.O Box 66 Sutherland NSW 1499

Telephone: +61 2 8355 2440

Fax: +61 2 9521 7199

Web: www.mclarentraffic.com.au

Email: admin@mclarentraffic.com.au

Division of RAMTRANS Australia ABN: 45067491678 RPEQ: 19457

Transport Planning, Traffic Impact Assessments, Road Safety Audits, Expert Witness

220764.01FB - 12 December 2024

Environmental Impacts and Mitigation Measures

Land Resources (Appendix M of EIS)

- Land within the Land and Soil Capability (LSC) assessment area classification range from LSC Class 4 to LSC Class 8. At least 73% (33ha) of the site is classified as LSC Class 7 and LSC Class 8. With the remainder of the site classified as LSC Class 4 (4%) to LSC Class 5 (23%).
- A Biophysical Strategic Agricultural Land (BSAL) assessment found the entire LSC assessment area is non-BSAL and was verified as non-BSAL due to slope more than 10% and the remaining BSAL soils do not have a contiguous area of greater or equal to 20 hectares. The LSC assessment area is suited to grazing and improved pastures. It is not considered highly productive agricultural land as defined in *The Land and Soil Capability Assessment Scheme; Second Approximation* (OEH 2012).



Hillview Quarry

Land Resource Assessment

Coastwide Materials Pty Ltd

Prepared for: ADW Johnson

Prepared by:

SLR Consulting Australia

SLR Project No.: 630.12117.00000

4 July 2024

Revision: 04

Environmental Impacts and Mitigation Measures

Waste Management (Appendix N of EIS)

- Demolition and construction activities at the site will generate a range of construction and demolition (C&D) wastes. Throughout the development process, all materials will be reused and recycled where possible, minimising the disposal (landfilling) of materials other than those that are contaminated or unsuitable for reuse or recycling processes.
- The proposed quarry will generate only small quantities of waste. Where possible these waste materials will be recycled. Waste materials that cannot be recycled will be removed by suitably licenced contractors and disposed of at a licenced landfill.
- 240L Mobile Garbage Bins (MGBs) are recommended for the storage of general waste and comingled recycling based on the waste generation expectations. 240L bins provide suitable capacity and are easily manoeuvred for collection purposes.
- Considering the scale of the proposed development and the number of bins required to manage waste, a weekly collection is proposed as a minimum for servicing the above waste streams. Additional bins or increased servicing frequency may be applicable upon commencement of operations.
- A range of specialist wastes unsuitable for disposal in general waste bins may be generated as a result of typical operation of this development. Materials such as paints, cleaning chemicals, batteries, e-waste, and lightbulbs will be stored temporarily before appropriate disposal by a suitably qualified waste contractor.
- Waste on site is to be managed in accordance with the requirements outlined throughout the *Protection of the Environment Operations Act 1997* (POEO Act), including the correct transportation of wastes to a licensed facility (Section 143) and the disposal of waste without causing harm to environment (Section 115). Waste management strategies related to site operations have been established according to the *Great Lakes Development Control Plan 2014* (GLDCP) and NSW EPA Guidelines.

Hillview Quarry – Waste Management Plan

A Submission to ADW Johnson on behalf of Coastwide Materials

13th June 2024



Environmental Impacts and Mitigation Measures

Hazards (Appendix P-Q of EIS)

- **Bushfire:** The predominant vegetation formation around the proposed development is grassland and the office and weighbridge structures will be more than 100m from any areas of forest vegetation. The office building will be at least 119m from any forest vegetation to the east. Land with a radius of not less than 50m of each of those structures is to be established and maintained as an Asset Protection Zone (APZ), and the assessed Bushfire Attack Level (BAL) will be BAL-LOW. While no construction requirements apply for BAL-LOW, construction materials will be non-combustible. In conjunction with the management of areas within the site as an APZ, the existing and proposed future conditions on the site are such that any potential bushfire hazard vegetation within the development area will gradually be reduced as the quarry progresses through the stages of the proposed development. The management and use of the site will be subject to a separate Bushfire Management Plan (BMP).
- **Hazardous and Offensive Development:** The maximum quantities of dangerous goods to be stored on site for the proposed development do not exceed the screening thresholds for storage quantity screening. Explosives will be transported to site for use, but not stored on site. The cumulative annual peak weekly movements of vehicles delivering dangerous goods to the site do not exceed the transport screening thresholds. As such, the proposed development is not considered to be 'potentially hazardous development', and further addition of a preliminary hazard assessment is not required.
- The proposed development is however considered to be a 'potentially offensive development' in line with Schedule 1 of the POEO Act, as it requires a licence under pollution control legislation. If a development cannot obtain the necessary pollution control licences or other permits, then it may be classified as 'offensive' and may not be permissible in most zonings. It is not anticipated that this will be the case with the proposed development.



Bushfire Assessment

In relation to

Hillview Hard Rock Quarry

Various Lots

67 Maytoms Lane, Booral

Prepared for:
Coastwide Materials Pty Ltd

June 2024

Environmental Impacts and Mitigation Measures

Visual (Appendix R of EIS)

- The existing landscape character within and surrounding the site will have a relatively high capability to absorb change. The proposed development would not result in the introduction of prominent elements to the surrounding landscape character. The proposed quarry will not form a significant visual element within the viewshed and will not be visible from most key view locations, including areas of rural dwellings, local road corridors and The Buckets Way. Potential views towards the proposed development from dwellings with potential visibility are likely to be partially screened and/or filtered by sloping hillsides with existing dense mature tree cover. The proposed quarry will result in a low to moderate visual effect and is deemed to be acceptable.

GBD
Landscape Architecture

gbdla.com.au

Hillview Hard Rock Quarry

Visual Impact Assessment

Prepared for Coastwide Materials Pty Ltd 3 July 2024

Environmental Impacts and Mitigation Measures

Social (Appendix S of EIS)

Stakeholder views

- Main stakeholder concerns expressed were:
 - Impacts on The Bucketts Way, including; quarry traffic volumes, existing disrepair of the road and potential further damage, road safety, function of the proposed intersection of Maytoms Lane and The Bucketts Way, and effects on the intersection of The Bucketts Way and the Pacific Highway at Twelve Mile Creek.
 - Health and amenity impacts of quarry operations, including air quality (e.g., dust, diesel emissions), noise and vibration, blasting impacts; potential effects on water resources; the quarry would be incompatible with surrounding uses.
 - Potential cumulative impacts of the proposed quarry in the context of other operating or approved quarries in the surrounding areas.
 - Distribution of benefit, with the general view being that the quarry would result in no benefit for the local community.
- Positive stakeholder comments were:
 - Recognition that regional development of infrastructure and housing to meet population growth, and upkeep of existing infrastructure, requires access to quarried material.
 - The Project may create local employment and commercial opportunities (e.g. suppliers and contractors).
- Overall, effects on The Bucketts Way were clearly the most important matter of concern.

Responses to stakeholder concerns

- The SIA includes recommendations for the management of social impacts:
 - Ongoing community engagement between Coastwide Materials and the Booral community.
 - Development and implementation of an effective complaints handling mechanism.
 - Formation of a Community Consultative Committee (CCC) to facilitate accurate information being provided to the community.
 - Adoption of the recommendations of technical reports for the monitoring, management and mitigation of specific impacts.
 - The possible development of a Social Impact Management Plan (SIMP) should this be advised by DPHI.
 - The proponent has undertaken to make annual community support contributions within the local community.
- The SIA recognises that despite these responses, some stakeholders may remain opposed to the project, because negative effects are likely to be concentrated in the immediate surrounds of the quarry site and particularly on the population of Booral.

Social Impact Assessment

State Significant Development

SSD-70557215

Hillview Hard Rock Quarry Project

67 Maytoms Lane, Booral NSW

Coastwide Materials Pty Limited

December 2024

AIGIS GROUP

Environmental Impacts and Mitigation Measures

Economic (Appendix T of EIS)

- The CBA compares the overall economic benefits of the project with the economic costs to produce a 'net' outcome.
 - Economic benefits include:
 - Corporate taxes
 - Net producer surplus
 - Road haulage charges (MidCoast and Port Stephens Councils)
 - Land rates (MCC)
 - Employment benefit (incomes)
 - Voluntary local contributions by the Proponent.
 - Economic costs include assessments for the following effects:
 - Aboriginal cultural heritage
 - Biodiversity
 - Air quality
 - Greenhouse gas emissions
 - Noise & vibration
 - Surface water
 - Traffic & Transport
- The CBA requires a range of estimates of net benefit, to allow for different outcomes. The assessment concludes a net benefit of between \$8.5 million and \$17.7 million (central estimate of \$12.1 million) over the life of the project.
- The LEA apportions the CBA estimates on differential bases. Examples are:
 - The share of corporate taxes (federal government) are apportioned to the local/regional communities on the regional proportion of the national population.
 - Road haulage charges are apportioned to the region (LGA) as these are essentially levied to repair effects of additional road haulage use.
 - Employment benefit is also likely to mainly accrue to workers in the region.
- The LEA also results in a net economic benefit.
- The EA recognises that the project would be beneficial to the State of NSW overall.
- The EA also recognises that economic effects at more localised levels may not be considered by some stakeholders as adequately reflecting the cost of the project to the community. The EA and SIA are consistent in this respect.

Economic Assessment

**State Significant Development
SSD-70557215
Hillview Hard Rock Quarry Project
67 Maytoms Lane
Booral, NSW**

Coastwide Materials Pty Limited

December 2024

AIGISGROUP

Environmental Impacts and Mitigation Measures

Rehabilitation (Appendix U of EIS)

- The primary rehabilitation goal is to create a safe, stable and non-polluting post extraction landform that facilitates the achievement of the identified post mining land uses and is commensurate with site constraints. Preliminary final land use domains have been defined as land management units characterised by similar post mining land use objectives.
- Rehabilitation planning will be undertaken to ensure the total area of disturbance is minimised as far as practicable at any one time. This will reduce the potential for dust generation, erosion and sediment runoff or visual disruption caused by the site. Rehabilitation of the site will be undertaken to achieve a stable non-polluting landform that is compatible with the surrounding landscape both visually and functionally. The resultant landscape will be constructed in accordance with the detailed final landform designs, proposed final landform and the recommendations of relevant assessments and studies. Achievement of the agreed post mining land use will be reached through a series of conceptual rehabilitation phases.



Hillview Hard Rock Quarry

Rehabilitation Strategy

ADW Johnson Pty Ltd

Warners Bay NSW 2282

Prepared by:

SLR Consulting Australia

10 Kings Road, New Lambton NSW 2305,
Australia

SLR Project No.: 630.12117.00500

1 July 2024

Revision: 03