



Extrablack

01	Signage design statement	03
02	Signage hierarchy	06
03	External signage masterplans	09
04	External identification & wayfinding signage	12

Signage design statement

01

Signage design statement

The Riverside Theatre redevelopment project aims to establish a world-class cultural venue that enhances Parramatta's status as a premier performing arts destination. The project integrates key requirements from the workshop discussions, signage and wayfinding strategies, and digital signage solutions to ensure a seamless and engaging visitor experience.

Introduction

The Riverside Theatre is located in the heart of the Parramatta CBD by the riverside.

The site includes 1,500 seat Lyric Theatre, refurbishment of the existing iconic 761 seat Riverside Playhouse Theatre, an all-new 'Black Box' drama and performance theatre (studio) 331 seats, and a digital development studio and digital cinema with 100 seats.

As part of this project a Signage and Wayfinding overlay is required to communicate the values of the City of Parramatta [CoP] and allow visitors and staff to navigate to, around and through the destination. Affording seamless experiences for all users to navigate from public spaces, to transport & to their desired destination. Along side this is a Statutory and DDA Accessible signage requirement.

This External DA Signage Package shows a number of signage elements that are located at key 'line-of-sight' positions and major decision points to assist with the circulation to and around the Riverside Theatre site.

Signage Strategy

A signage strategy was developed identifying the different user groups and journeys that they may undertake. This formed the masterplanning strategic approach as to where signs were located and what types of signs were implemented. A hierarchy of sign types was also developed.

Our strategic approach is always placing the user at the centre of the wayfinding system. This sets the precedence and frame of reference for a user focused wayfinding strategy and signage system. The signage needs to be simple to use and easy to understand, making the use of and the journey experience fulfilling, purposeful and enjoyable.

City of Parramatta's Signage System

Along side the signage identifying Riverside Theatre sits the City of Parramatta's Signage System that has been recently developed. Our strategic approach has looked at the wider public domain and where there is a 'hand over' from the City of Parramatta's Signage System to the Riverside Signage system.

Signage design statement

Design approach

The signage and wayfinding for the Riverside Theatre needs to establish a sense of identity that is aligned with the architecture and vision which defines a 'sense of place'. It needs to have universal appeal adding visual interest and serving a practical wayfinding function imbued with sensitivity to the heritage, cultural significance, original natural forms of the site, the contemporary architecture, urban gardens and with relevance in the public domain.

Signage and graphics needs to support, strengthen and support the developments vision and strategy for the Theatre as an integrated offering within the river precinct and being respectful to the sites history and indigenous significance.

It is also important to be sympathetic to the ground plane landscape design to ensure a cohesive and integrated signage and wayfinding system delivering a unique experience to all.

Our goal is to design a wayfinding signage system that has an enduring aesthetic appeal, consistency, flexibility and simplicity across key components, while being highly functional and operating in accordance with relevant regulations, accessibility requirements creating an inclusive and engaging environment.

Site lines and signage locations

The location of the signage is important and is shown on the signage location masterplans. It is determined by the user approach, and mode of travel, whether vehicular, cycle or walking etc and approach to the facility – road, footpath, walkways or park. We are proposing signage located both at a high level for long distance viewing and at a low level for human scale interaction.

Materiality

Materiality forms a strong part of the visual language for the signage. Signage utilises the proposed architectural palette of materials in keeping with the architecture. A palette of concrete, metal, fabricated signage are proposed for the sign forms with the statutory signage being pragmatic and painted metal panels for durability.

We give consideration to materials and how they relate to the building, fabrication techniques and ESD requirements.

The signage should be:

- Cost effectively manufactured & installed.
- Durable from the natural wear & tear, cleaning and from vandalism where possible.
- Have components that are easily replaced or touched up if damaged.
- The aesthetic resolution to compliment and work with the architecture and external environments

Scale

Signage scale is in response to the architectural surrounding, building scale, viewing distances and existing signage on the building facade and at key entrances. The aim is not to clutter the environment but sit within and create a cohesive visual 'look and feel'.

Sign types and illumination

It is proposed the primary identification signage is illuminated at the same times as the rest of the facility.

Illumination is proposed as either internal, halo or face lit providing for a variation of importance and message, viewing distance and signage recognition.

Signage hierarchy

02

Signage hierarchy

Our aim is to develop a coordinated signage system which can be applied throughout the whole development, providing both flexibility and unity integrated graphics and signage design giving each building its own personality and a clear wayfinding system.

Sign systems are typically organised into signage information categories. These categories are determined by the functions that the sign messages are intended to convey.

We have identified five major sign types of which there are subsets within each category to cover the functional requirements and information required for the Riverside Theatre for Parramatta.

These include:

- Identification – naming places and destinations such as Theatres, spaces bars and cafe.
- Wayfinding – directions to and from places and destinations
- Operational – naming of facilities such as FOH operational, BOH, plant rooms etc.
- Statutory – statutory and authorities' regulatory, prohibitive and safety information, including fire, building and statutory signage
- Interpretive – plaques exploring the historical narrative of the area.

The signage developed will be an integrated family that is designed to suit the various information types and architectural conditions and is flexible for its various functions.

Different sign forms make up the signage family or sign types and relate to each other to create a cohesive signage and communication system.


Sign forms vary depending on context, location and signage hierarchy, for example a building identification sign requires a larger sign whereas internal wayfinding sign requires a smaller sign due to the distance it is being read from.

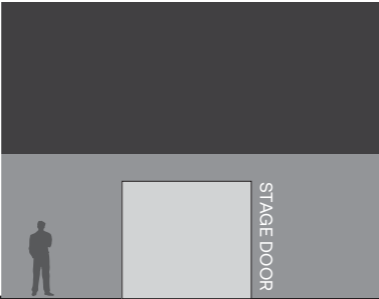
Signage design depends on:


- the architectural, interior, urban or landscape context with regard to scale, form, detail, materials and colour
- the scale of the message
- the distance at which the message is to be read
- the importance of the message
- the availability of mounting or fixing places relative to the most appropriate viewing locations.


The following pages show a typical external sign type hierarchy we envisage for the Riverside Theatre.

IDENTIFICATION










ID1

Major Building ID


ID1.A: Major Building ID



ID2

Site Destination ID

ID2.A: Exterior



ID13

Digital Architectural Signage

ID13.A: Fin

ID13.B: Facade

LOADING DOCK





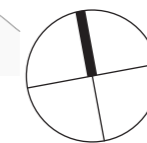
LD1

Loading Dock ID

LD1.A: Dock Entry ID

External signage masterplans

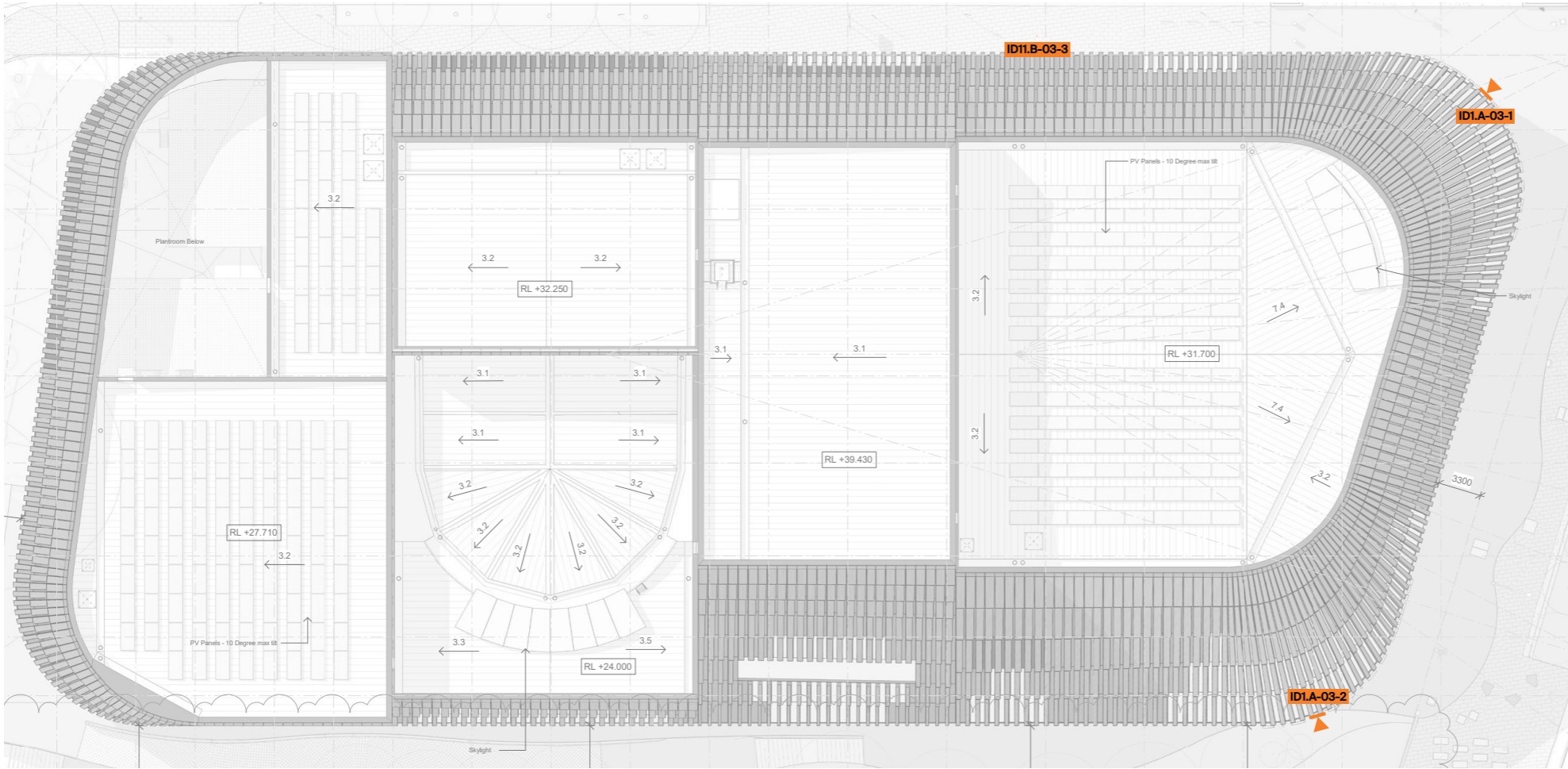
03














ID1.A	Major Building Identification		
ID2.A	Site Destination Identification		
ID13.A	Digital Architectural Signage - Fin		
ID13.B	Digital Architectural Signage - Facade		
LD1.A	Loading Dock Entry Identification		

-  **Illumination**
Power Requirement to BMS/Operations
-  **Data**
Data Requirement to BMS/Operations
-  **Footings**
In ground

Level 5
15 Foster Street
Surry Hills NSW 2010
Australia
T +61 2 8964 6258
extrablack.com.au



Signtypes		
ID1.A	Major Building Identification	 
ID2.A	Site Destination Identification	
ID13.A	Digital Architectural Signage - Fin	 
ID13.B	Digital Architectural Signage - Facade	 
LD1.A	Loading Dock Entry Identification	

Signage Requirements - By Others	
 Illumination	Power Requirement to BMS/Operations
 Data	Data Requirement to BMS/Operations
 Footings	In ground

Issued for SSDA			
Revisions			
A	250325	KH	Issued for SSDA
B	110425	KH	Issued for SSDA
C	200625	KH	Issued for SSDA
D	110725	KH	Issued for SSDA

Client
Riverside Theatres & City of Parramatta

Project
Riverside Theatres

Drawing title
Masterplanning

Drawn KH	Checked RP
-----------------	-------------------

Scale As shown at A3

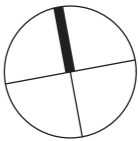
Date	Job number
250325	COP001

Drawing number
SW-DA-0004_MP Level 3

Signtype MP	Revision D	Sheet size A3
--------------------	-------------------	----------------------

ISSUED FOR SSDA

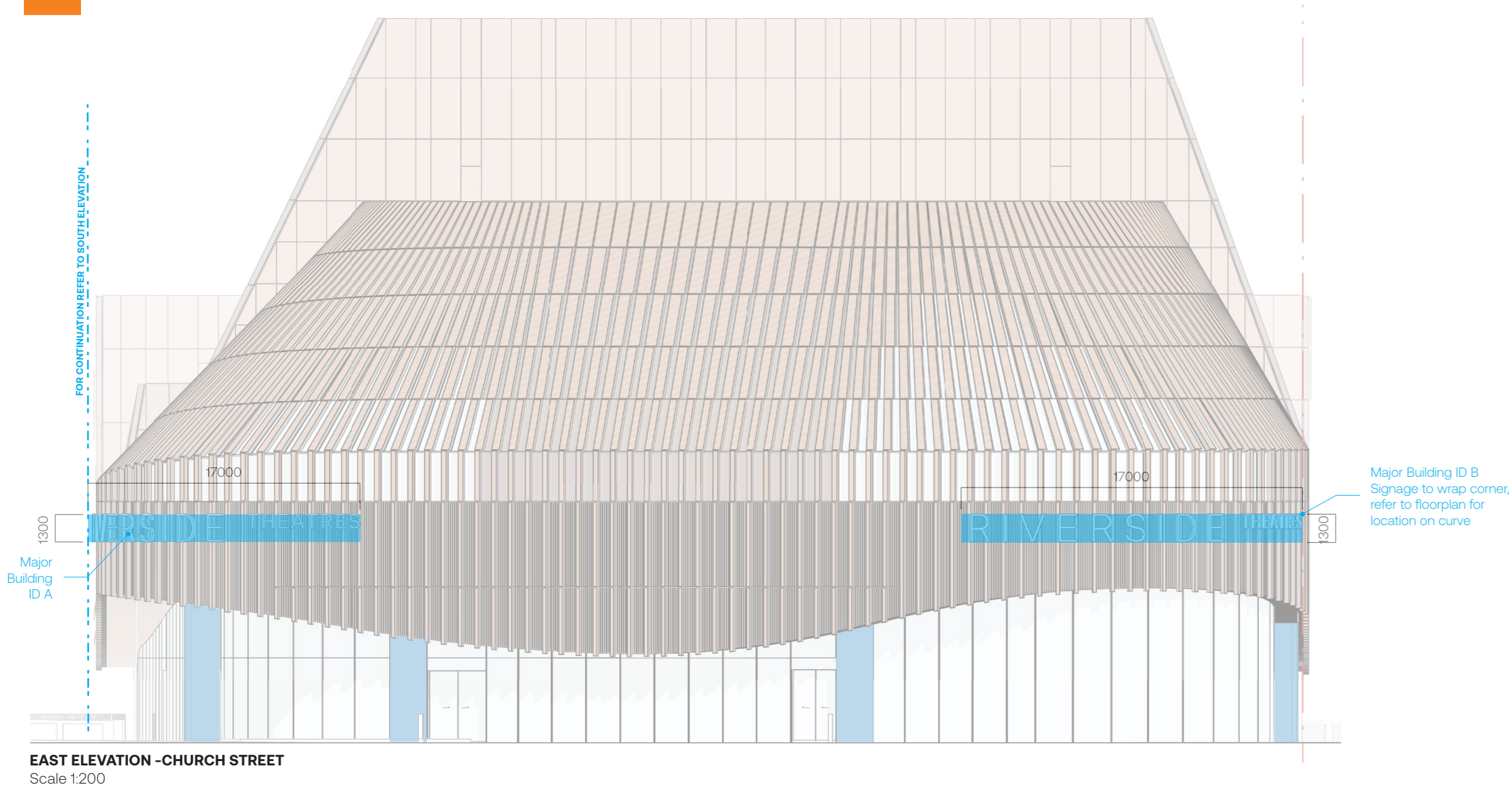
Reproduction of the whole or part of this document constitutes an infringement of copyright. The information ideas and concepts contained in this document are confidential. The recipient(s) of this document is prohibited from disclosing such information, ideas and concepts to any person without the prior written consent of Extrablack Pty Ltd.



Extrablack

Level 5
15 Foster Street
Surry Hills NSW 2010
Australia
T +61 2 8964 6258
extrablack.com.au

External identification & wayfinding signage



Elevation
Scale 1:100

Issued for SSDA

Revisions			
A	250325	KH	Issued for SSDA
B	110425	KH	Issued for SSDA
C	200625	KH	Issued for SSDA
D	110725	KH	Issued for SSDA

Client
Riverside Theatres &
City of Parramatta

Project
Riverside Theatres

Drawing title
Major Building ID

Date
250325

Job number
COP001

Drawing number
SW-DA-0005_Major Building ID 001

Signtype GEN | Revision D | Sheet size A3

ISSUED FOR SSDA

Reproduction of the whole or part of this document constitutes an infringement of copyright. The information ideas and concepts contained in this document are confidential. The recipient(s) of this document is prohibited from disclosing such information, ideas and concepts to any person without the prior written consent of Extrablack Pty Ltd.

High Level Signage:
Height: 1300mm
Width: 17000mm (to wrap building edges)
Depth: 150mm
Power: Yes

Sign Main Function:
Identify Theatre name and signal to pedestrians and vehicles approaching.

Fabrication:
Fabricated aluminium 150mm d dimensional letters to wrap aluminium cladding.
Edges in bronze to match Lamella cladding with face illumination.

Illumination:
Internally illuminated with using sufficient LED to provide even and non-banding illumination in warm white.

Framework:
Suitable support frame mounted to the Lamella Cladding façade by sign manufacturer as per Engineers specifications.
All fixings, wiring and power sources are completely concealed with no elements visible.
Painted to match Exterior finish

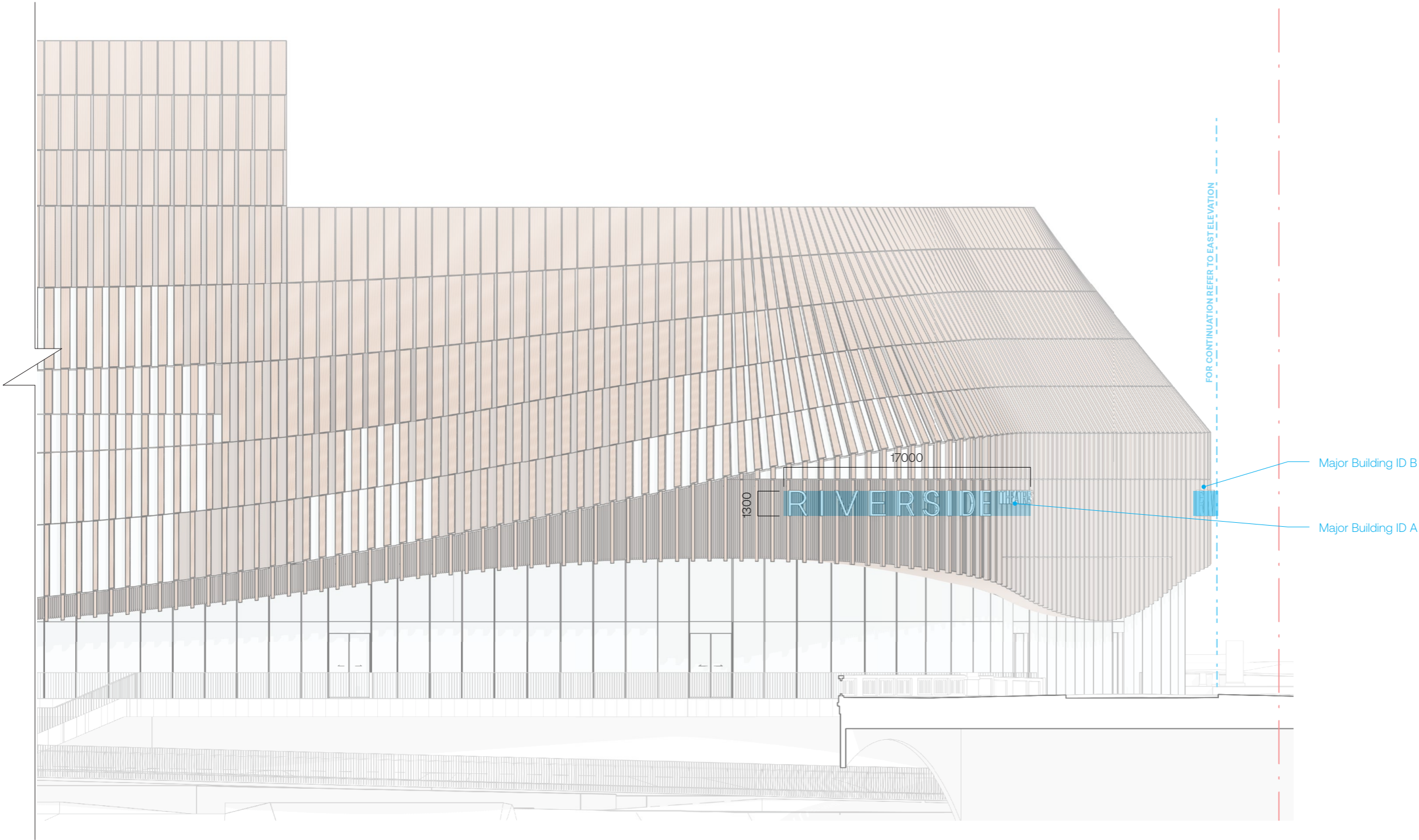
Naming and branding of the development is TBC.
Locations to be further coordinated during documentation.



Reference Image
Fabrication Example

Extrablack

Level 5
15 Foster Street
Surry Hills NSW 2010
Australia
T +61 2 8964 6258
extrablack.com.au



High Level Signage:
Height: 1300mm
Width: 17000mm (to wrap building edges)
Depth: 150mm
Power: Yes

Sign Main Function:
Identify Theatre name and signal to pedestrians and vehicles approaching.

Fabrication:
Fabricated aluminium 150mm d dimensional letters to wrap aluminium cladding.
Edges in bronze to match Lamella cladding with face illumination.

Illumination:
Internally illuminated with using sufficient LED to provide even and non-banding illumination in warm white.

Framework:
Suitable support frame mounted to the Lamella Cladding façade by sign manufacturer as per Engineers specifications.
All fixings, wiring and power sources are completely concealed with no elements visible.
Painted to match Exterior finish

Naming and branding of the development is TBC.
Locations to be further coordinated during documentation.



Reference Image
Fabrication Example

SOUTH ELEVATION - PARRAMATTA RIVER
Scale 1:200

Issued for SSDA			
Revisions			
A	250325	KH	Issued for SSDA
B	110425	KH	Issued for SSDA
C	200625	KH	Issued for SSDA
D	110725	KH	Issued for SSDA

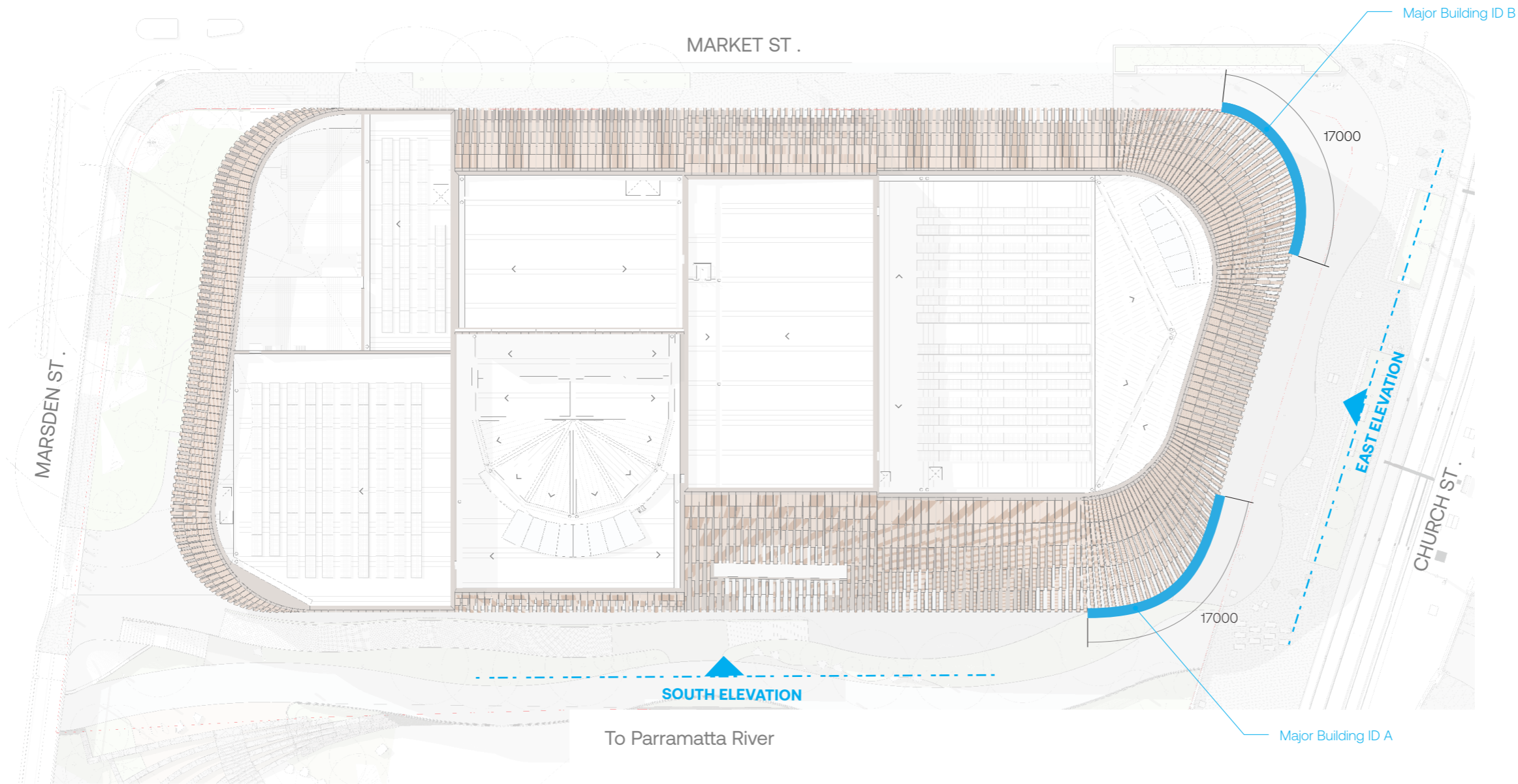
Client	Riverside Theatres & City of Parramatta
Scale	As shown at A3

Project	
Riverside Theatres	
<hr/>	
Drawing title	
Major Building ID	
<hr/>	
Drawn KH	Checked RP

Date	250325	Job number	COP001
Drawing number			
SW-DA-0005_Major Building ID 002			
Signtype GEN		Revision D	Sheet size A3

ISSUED FOR SSDA	
Reproduction of the whole or part of this document constitutes an infringement of copyright. The information ideas and concepts contained in this document are confidential. The recipient(s) of this document is prohibited from disclosing such information, ideas and concepts to any person without the prior written consent of Extrablack Pty Ltd.	

Extrablack	
Level 5 15 Foster Street Surry Hills NSW 2010 Australia T +61 2 8964 6258 extrablack.com.au	



Plan view
Scale 1:500

Issued for SSDA			
Revisions			
A	250325	KH	Issued for SSDA
B	110425	KH	Issued for SSDA
C	200625	KH	Issued for SSDA
D	110725	KH	Issued for SSDA

Client

Riverside Theatres &
City of Parramatta

Scale As shown at A3

Project	
Riverside Theatres	
<hr/>	
Drawing title	
Major Building ID	
<hr/>	
Drawn KH	Checked RP

Date250325

Job numberCOP001

Drawing number

SW-DA-0005_Major Building ID

Signtype

GEN

Revision

D

Sheet size

A3

ISSUED FOR SSDA	
Reproduction of the whole or part of this document constitutes an infringement of copyright. The information ideas and concepts contained in this document are confidential. The recipient(s) of this document is prohibited from disclosing such information, ideas and concepts to any person without the prior written consent of Extrablack Pty Ltd.	

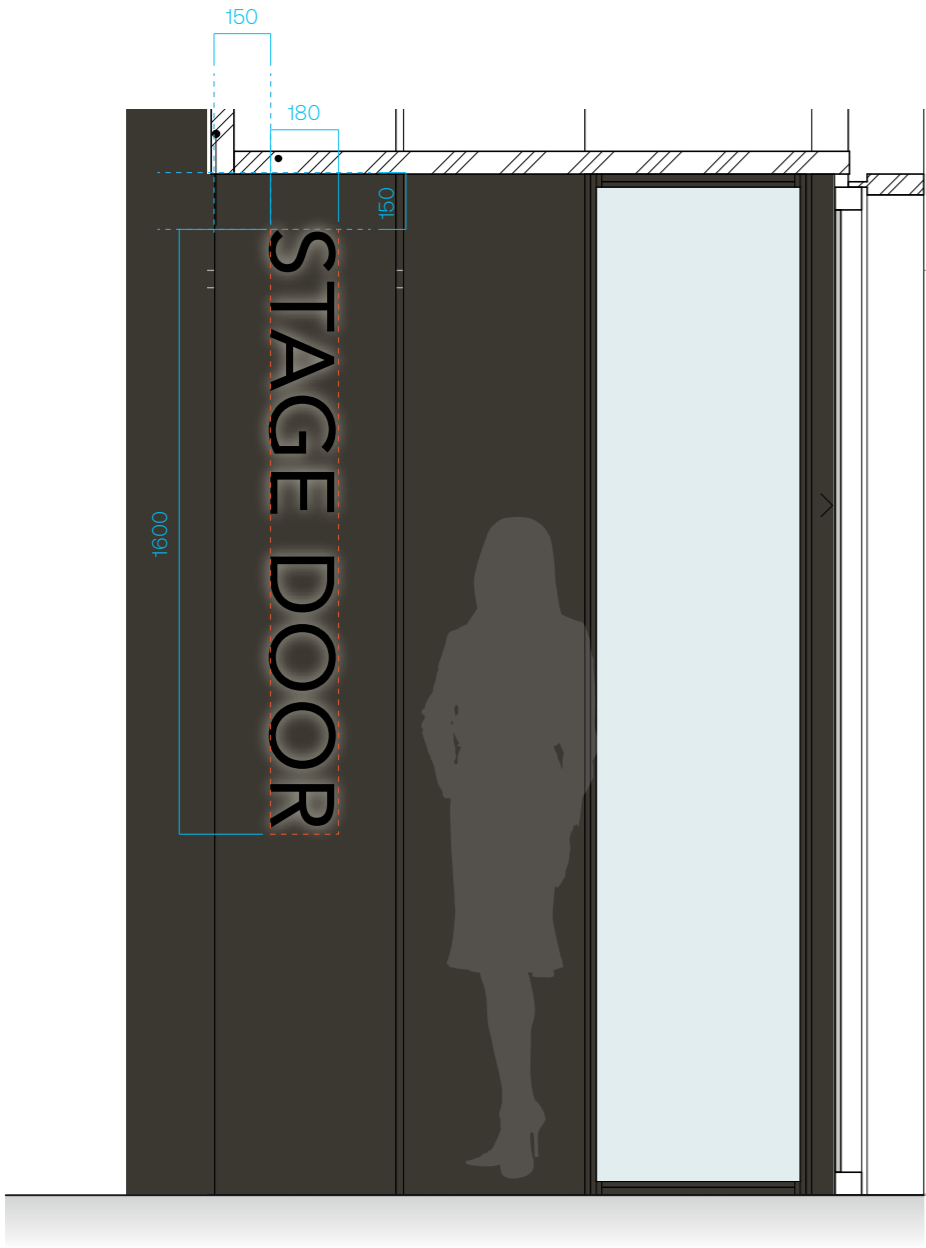


Reference Image
Fabrication Example

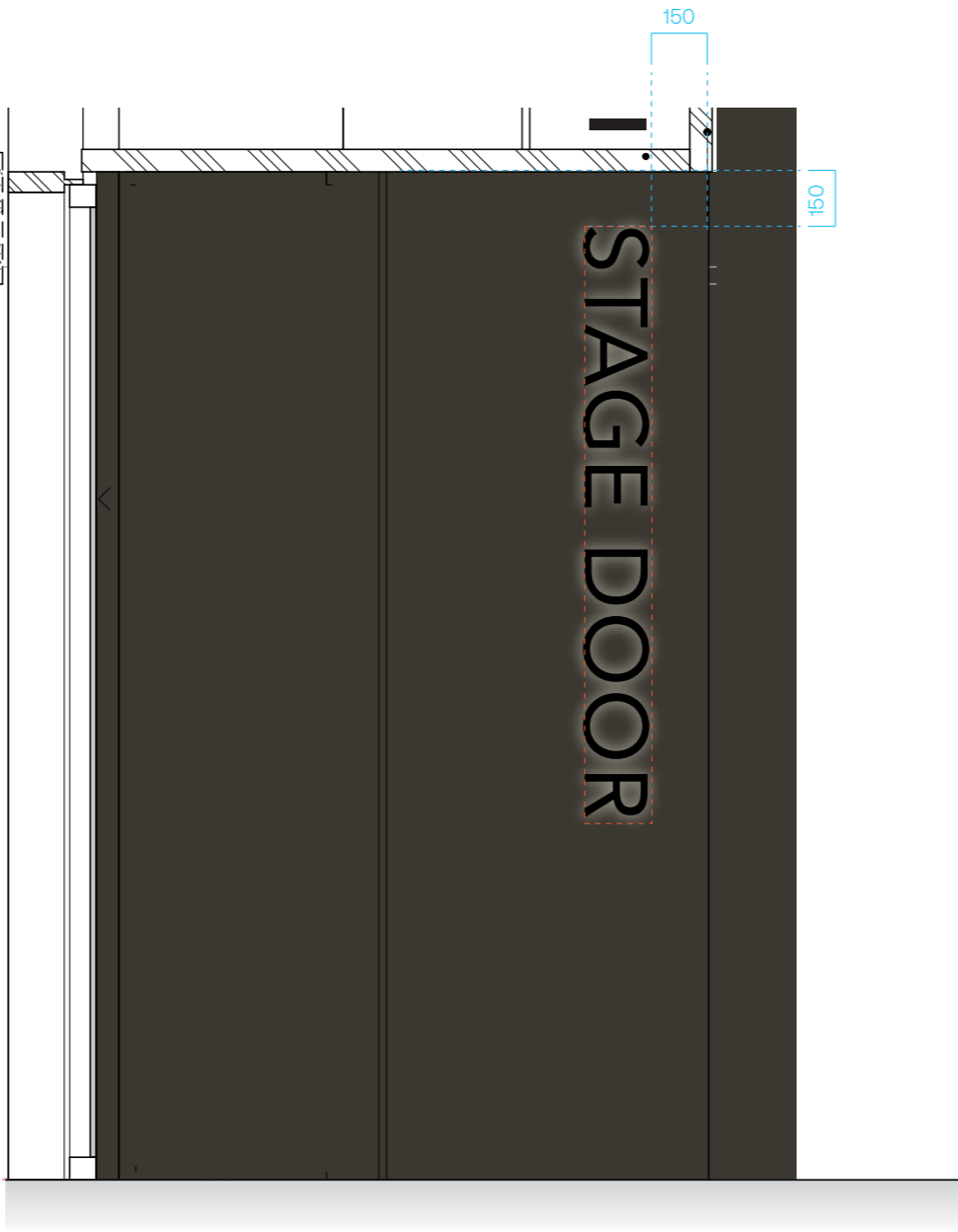
Extrablack

Level 5
15 Foster Street
Surry Hills NSW 2010
Australia
T +61 2 8964 6258
extrablack.com.au

- High Level Signage:**
Height: 1300mm
Width: 17000mm (to wrap building edges)
Depth: 150mm
Power: Yes
- Sign Main Function:**
Identify Theatre name and signal to pedestrians and vehicles approaching.
- Fabrication:**
Fabricated aluminium 150mm d dimensional letters to wrap aluminium cladding.
Edges in bronze to match Lamella cladding with face illumination.
- Illumination:**
Internally illuminated with using sufficient LED to provide even and non-banding illumination in warm white.
- Framework:**
Suitable support frame mounted to the Lamella Cladding façade by sign manufacturer as per Engineers specifications.
All fixings, wiring and power sources are completely concealed with no elements visible.
Painted to match Exterior finish
- Naming and branding of the development is TBC.
Locations to be further coordinated during documentation.



Elevation A
Scale 1:20



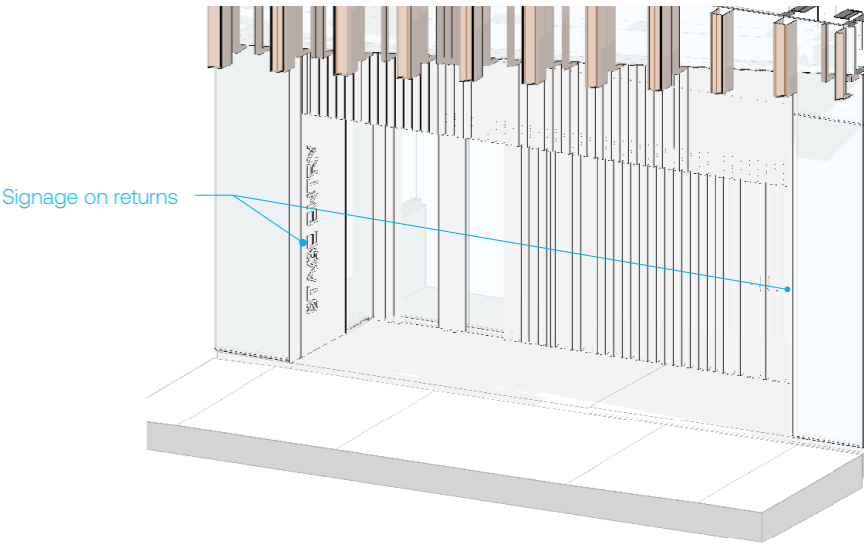
Elevation B
Scale 1:20

Stage ID Signage:
Height: 1600mm
Width: 180mm
Depth: 30mm
Power: Yes

Sign Main Function:
Identify stage door for Theatre staff and performers

Fabrication:
Fabricated aluminium 150mm d dimensional letters to wrap aluminium cladding. Edges in bronze to match Lamella cladding with face illumination.

Illumination:
Internally illuminated with using sufficient LED to provide even and non-banding illumination in warm white.



Reference Image
Halo illumination

Issued for SSDA			
Revisions			
A	250325	KH	Issued for SSDA
B	110425	KH	Issued for SSDA
C	200625	KH	Issued for SSDA

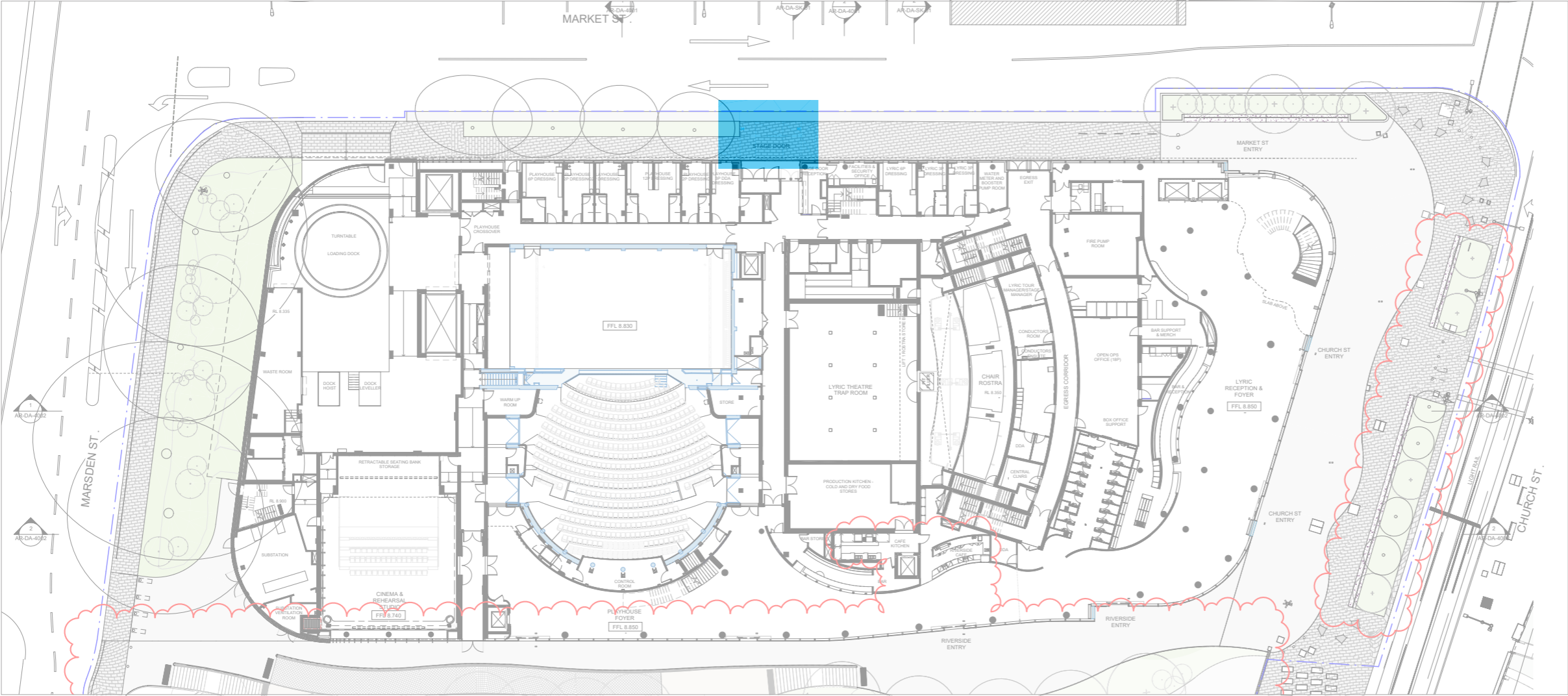
Client	Riverside Theatre & City of Parramatta
Scale	As shown at A3

Project	
Riverside Theatre	
<hr/>	
Drawing title	
Stage ID	
<hr/>	
Drawn KH	Checked RP

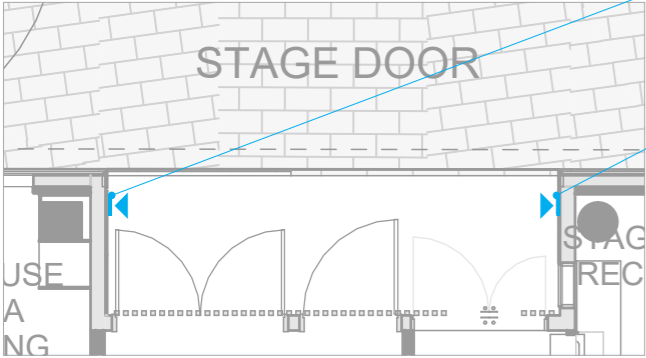
Date	250325	Job number	COP001		
<hr/>					
Drawing number					
SW-DA-0006_Stage ID					
<hr/>					
Signtype	GEN	Revision	C	Sheet size	A3

ISSUED FOR SSDA
Reproduction of the whole or part of this document constitutes an infringement of copyright. The information ideas and concepts contained in this document are confidential. The recipient(s) of this document is prohibited from disclosing such information, ideas and concepts to any person without the prior written consent of Extrablack Pty Ltd.

Extrablack
Level 5 15 Foster Street Surry Hills NSW 2010 Australia T +61 2 8964 6258 extrablack.com.au



Plan
Scale 1:500



Plan
Scale 1:100

Issued for SSDA			
Revisions			
A	250325	KH	Issued for SSDA
B	110425	KH	Issued for SSDA
C	200625	KH	Issued for SSDA

Client

**Riverside Theatre &
City of Parramatta**

Scale As shown at A3

Project	
Riverside Theatre	
<hr/>	
Drawing title	
Stage ID	
<hr/>	
Drawn KH	Checked RP

Date	Job number	
250325	COP001	
<hr/>		
Drawing number		
SW-DA-0006_Stage ID		
<hr/>		
Signtype GEN	Revision C	Sheet size A3

ISSUED FOR SSDA	
Reproduction of the whole or part of this document constitutes an infringement of copyright. The information ideas and concepts contained in this document are confidential. The recipient(s) of this document is prohibited from disclosing such information, ideas and concepts to any person without the prior written consent of Extrablack Pty Ltd.	

Stage ID Signage:
Height: 1500mm
Width: 150mm
Depth: 30mm
Power: Yes

Sign Main Function:
Identify stage door for Theatre staff and performers

Fabrication:
Fabricated aluminium 150mm d dimensional letters to wrap aluminium cladding. Edges in bronze to match Lamella cladding with face illumination.

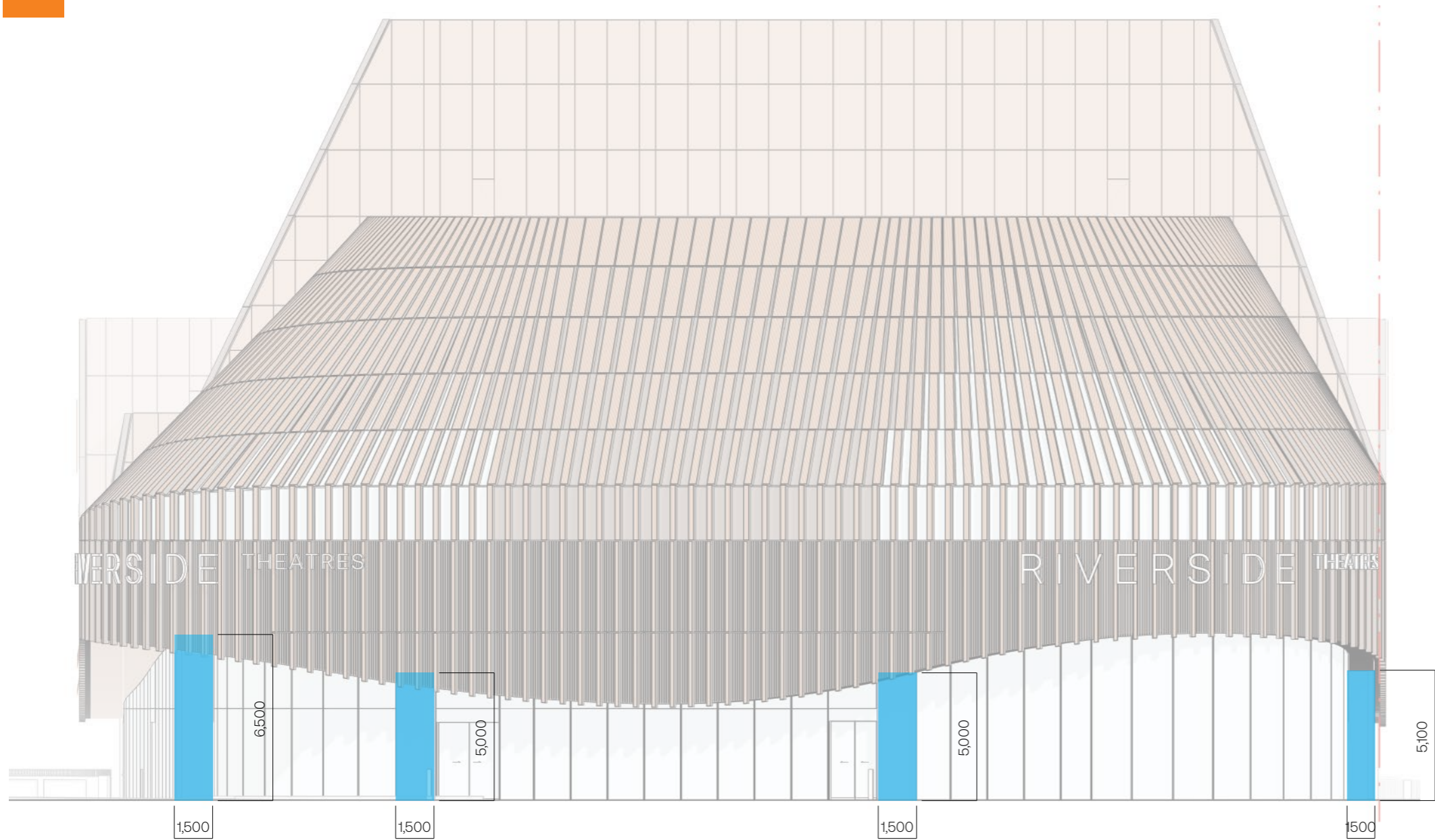
Illumination:
Internally illuminated with using sufficient LED to provide even and non-banding illumination in warm white.



Reference Image
Halo illumination

Extrablack

Level 5
15 Foster Street
Surry Hills NSW 2010
Australia
T +61 2 8964 6258
extrablack.com.au



EAST ELEVATION -CHURCH STREET
Scale 1:200

Specs:
Screen 1
Height: 6500mm
Width: 1500mm
Power: Yes

Screen 2
Height: 5000mm
Width: 1500mm
Power: Yes

Screen 3
Height: 5000mm
Width: 1500mm
Power: Yes

Screen 4
Height: 5100mm
Width: 1500mm
Power: Yes

Sign Main Function:
Provide Theatre advertising.

Fabrication:
Details regarding these screens are contained in the Architectural and Public Domain Report at Appendix G to the EIS

Issued for SSDA			
Revisions			
A	110725	KH	Issued for SSDA

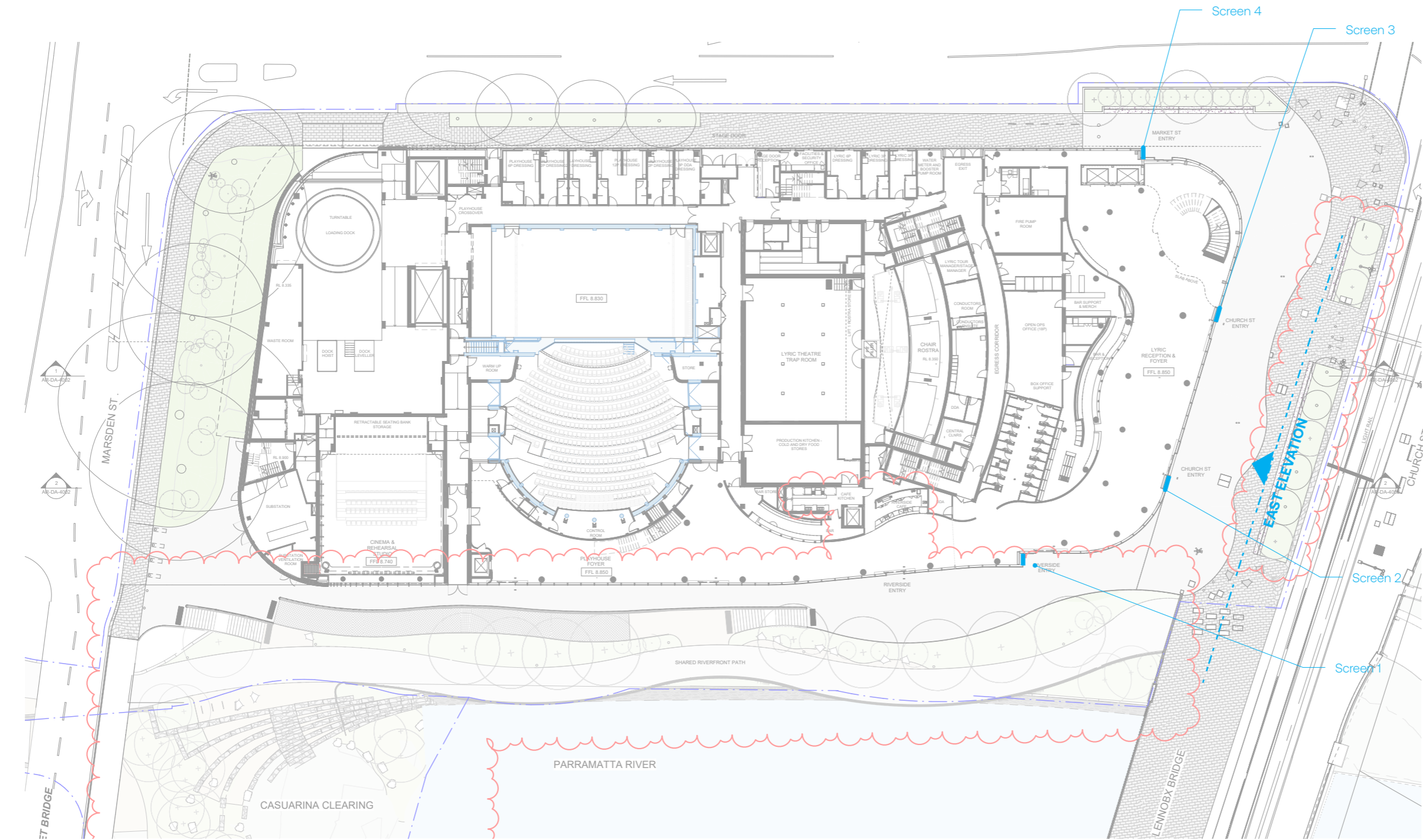
Client	
Riverside Theatres & City of Parramatta	
Scale	
As shown at A3	

Project	
Riverside Theatres	
Drawing title	
Digital Architectural Signage	
Drawn	KH
Checked	RP

Date	250325	Job number	COP001
Drawing number			
SW-DA-0005_Digital Architectural Signage Fin 001			
Signtype	GEN	Revision	A
Sheet size		A3	

ISSUED FOR SSDA	
Reproduction of the whole or part of this document constitutes an infringement of copyright. The information ideas and concepts contained in this document are confidential. The recipient(s) of this document is prohibited from disclosing such information, ideas and concepts to any person without the prior written consent of Extrablack Pty Ltd.	

Extrablack	
Level 5 15 Foster Street Surry Hills NSW 2010 Australia T +61 2 8964 6258 extrablack.com.au	



Plan view

Scale 1:500

Issued for SSDA

Revisions			
A	110725	KH	Issued for SSDA

Client
Riverside Theatres &
City of Parramatta

Scale As shown at A3

Project
Riverside Theatres

Drawing title
Digital Architectural Signage

Drawn KH | Checked RP

Date
250325

Job number
COP001

Drawing number
SW-DA-0005_Digital Architectural
Signage Fin 002

Signtype GEN | Revision A | Sheet size A3

ISSUED FOR SSDA

Reproduction of the whole or part of this document constitutes an infringement of copyright. The information ideas and concepts contained in this document are confidential. The recipient(s) of this document is prohibited from disclosing such information, ideas and concepts to any person without the prior written consent of Extrablack Pty Ltd.

Specs:
Screen 1
Height: 6500mm
Width: 1500mm
Power: Yes

Screen 2
Height: 5000mm
Width: 1500mm
Power: Yes

Screen 3
Height: 5000mm
Width: 1500mm
Power: Yes

Screen 4
Height: 5100mm
Width: 1500mm
Power: Yes

Sign Main Function:
Provide Theatre advertising.

Fabrication:
Details regarding these screens are contained in the Architectural and Public Domain Report at Appendix G to the EIS

Extrablack

Level 5
15 Foster Street
Surry Hills NSW 2010
Australia
T +61 2 8964 6258
extrablack.com.au

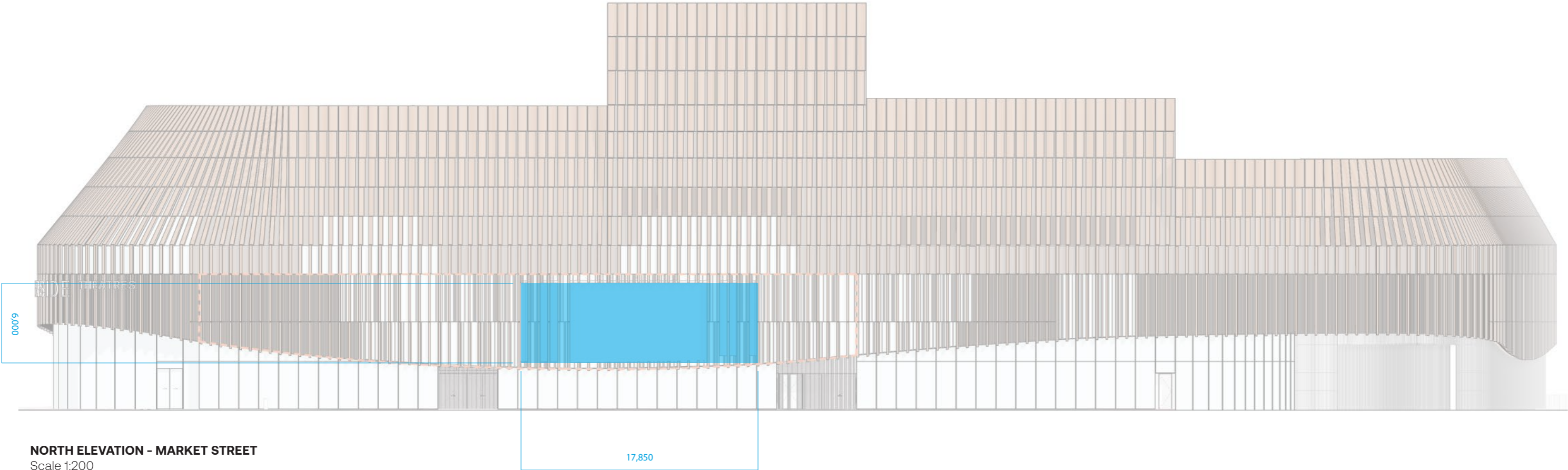


ID13.B Digital Architectural Signage - Facade

Specs:
Height: 6000mm
Width: 17850mm
Power: Yes

Sign Main Function:
Provide Theatre advertising.

Fabrication:
Details regarding these screens are contained in the Architectural and Public Domain Report at Appendix G to the EIS



NORTH ELEVATION - MARKET STREET
Scale 1:200

Issued for SSDA

Revisions			
A	110725	KH	Issued for SSDA

Client
Riverside Theatres &
City of Parramatta

Project
Riverside Theatres

Drawing title
Digital Architectural Signage

Date	Job number
250325	COP001

Drawing number
SW-DA-0005_Digital Architectural
Signage Facade 001

Signtype	Revision	Sheet size
GEN	A	A3

ISSUED FOR SSDA

Reproduction of the whole or part of this document constitutes an infringement of copyright. The information ideas and concepts contained in this document are confidential. The recipient(s) of this document is prohibited from disclosing such information, ideas and concepts to any person without the prior written consent of Extrablack Pty Ltd.

Extrablack

Level 5
15 Foster Street
Surry Hills NSW 2010
Australia
T +61 2 8964 6258
extrablack.com.au

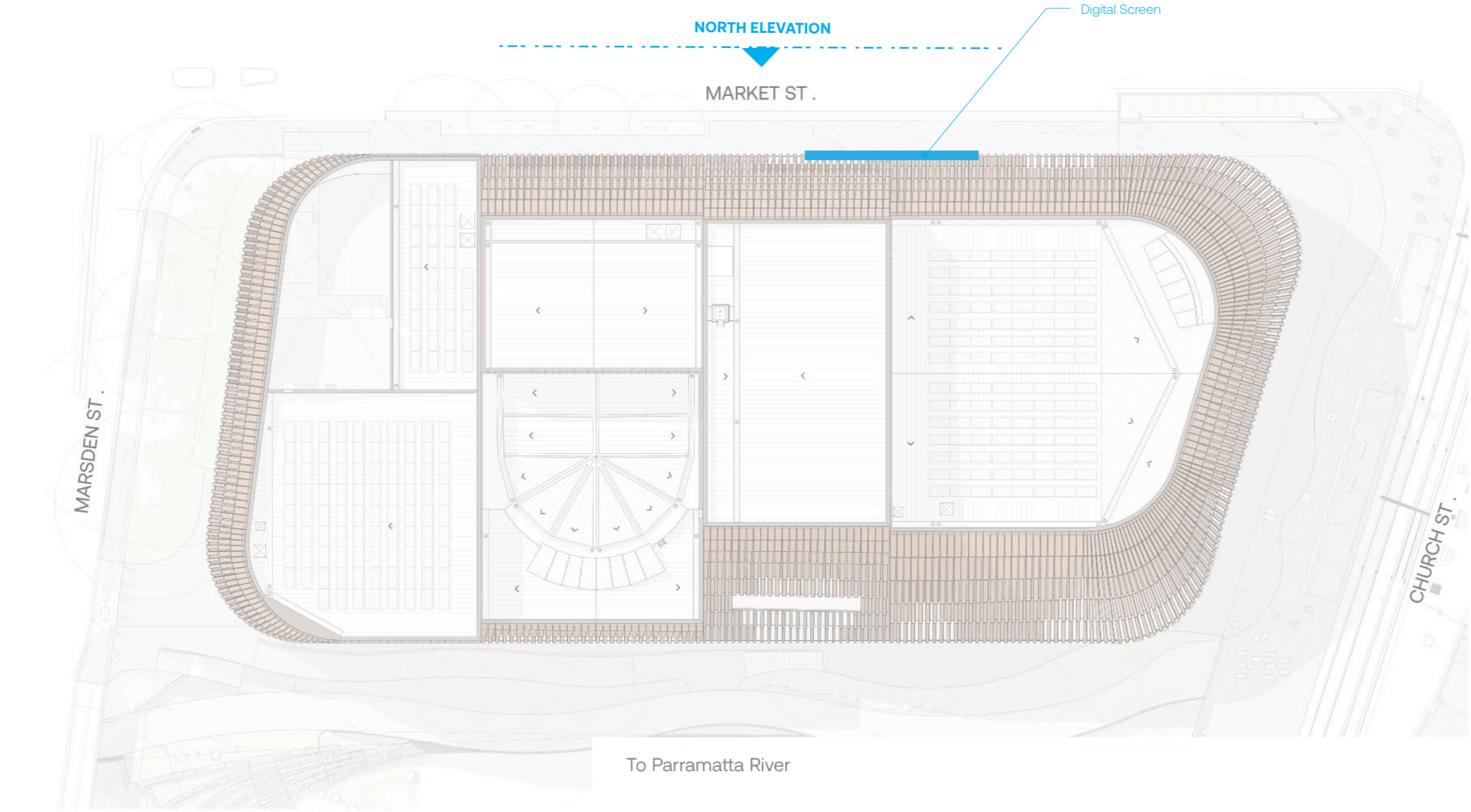
Scale As shown at A3

Drawn	Checked
KH	RP

Specs:
Height: 6000mm
Width: 17850mm
Power: Yes

Sign Main Function:
Provide Theatre advertising.

Fabrication:
Details regarding these screens are contained in the Architectural and Public Domain Report at Appendix G to the EIS



Plan view
Scale 1:500

Issued for SSDA			
Revisions			
A	110725	KH	Issued for SSDA

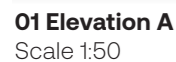
Client	Riverside Theatres & City of Parramatta
Scale As shown at A3	

Project	Riverside Theatres
Drawing title	
Digital Architectural Signage	
Drawn KH	Checked RP

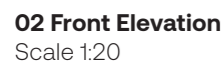
Date	250325	Job number	COP001
Drawing number			
SW-DA-0005_Digital Architectural Signage \Facade 002			
Signtype GEN	Revision A	Sheet size A3	

ISSUED FOR SSDA	
Reproduction of the whole or part of this document constitutes an infringement of copyright. The information ideas and concepts contained in this document are confidential. The recipient(s) of this document is prohibited from disclosing such information, ideas and concepts to any person without the prior written consent of Extrablack Pty Ltd.	

Extrablack	
Level 5 15 Foster Street Surry Hills NSW 2010 Australia T +61 2 8964 6258 extrablack.com.au	



01 Elevation A
Scale 1:50



02 Front Elevation
Scale 1:20

Issued for SSDA		
Revisions		
A	250325	KH
B	110425	KH
C	200625	KH

Client
**Riverside Theatre &
City of Parramatta**

Scale As shown at A3

Project
Riverside Theatre

Drawing title
Loading Dock ID

Drawn KH	Checked RP
-----------------	-------------------

Date	Job number	
250325	COP001	
<hr/>		
Drawing number		
SW-DA-0009_Loading Dock ID		
<hr/>		
Signtype GEN	Revision C	Sheet size A3

ISSUED FOR SSDA

Reproduction of the whole or part of this document constitutes an infringement of copyright. The information, ideas and concepts contained in this document are confidential. The recipient(s) of this document is prohibited from disclosing such information, ideas and concepts to any person without the prior written consent of Extrablack Pty Ltd.

Extrablack

Level 5
15 Foster Street
Surry Hills NSW 2010
Australia
T +61 2 8964 6258
extrablack.com.au

Loading Dock Signage:

Height: 450mm
Width: 3600mm (to wrap building edges)
Depth: 30mm
Power: Yes

Sign Main Function:

Identify Loading dock entry to vehicles

Fabrication:

Fabricated aluminium 30mm d dimensional letters to wrap aluminium cladding.
Edges in bronze to match Lamella cladding with face illumination.

Illumination:

Internally face and halo illuminated with using sufficient LED to provide even and non-banding illumination in warm white.

Framework:

Suitable support frame mounted to the façade by sign manufacturer as per Engineers specifications.

All fixings, wiring and power sources are completely concealed with no elements visible.



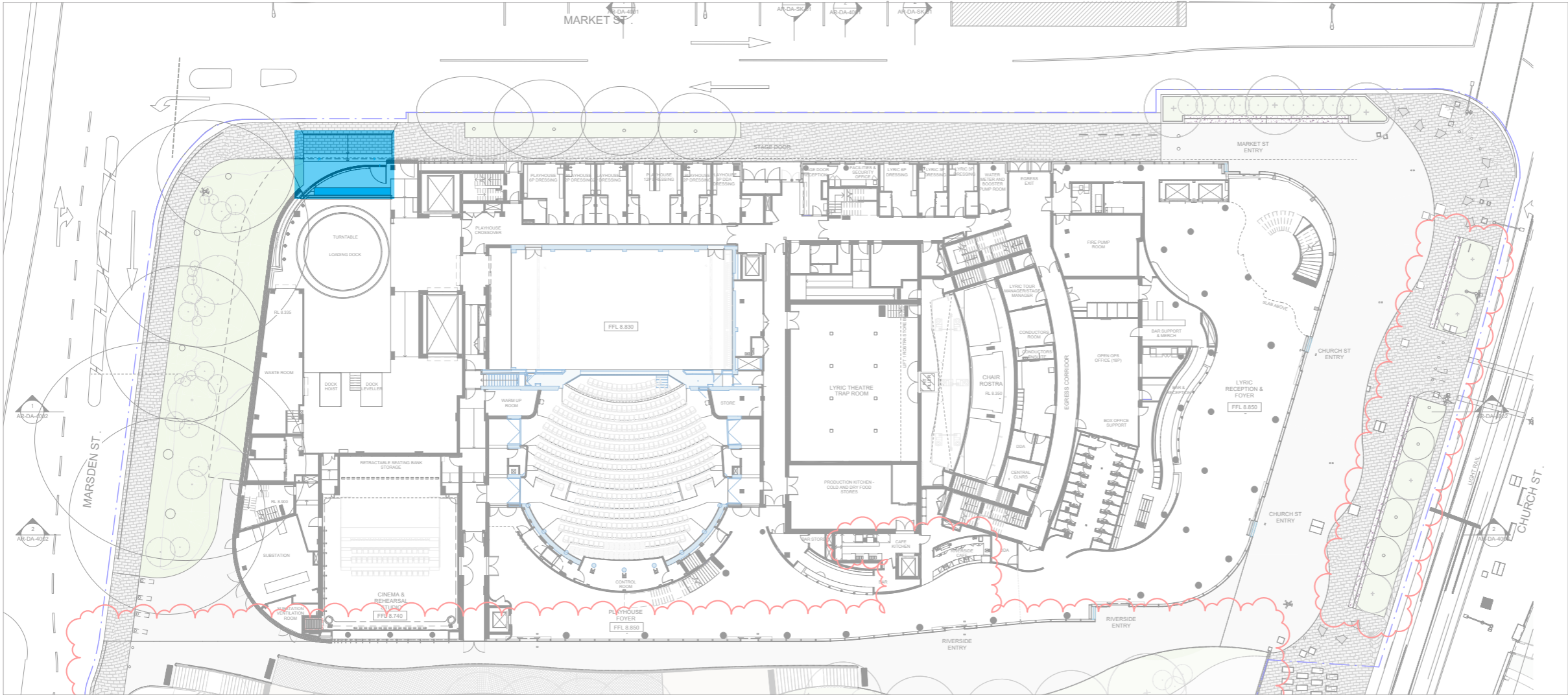
Reference Image
Halo and face illumination

Extrablack

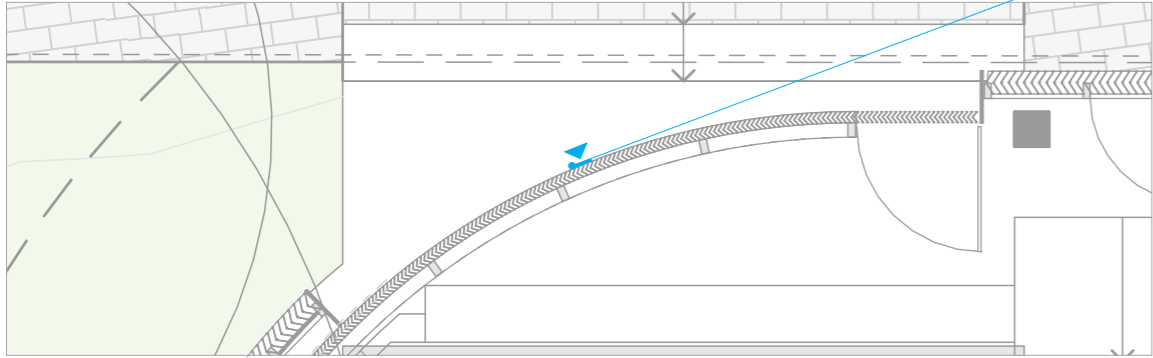
Level 5
15 Foster Street
Surry Hills NSW 2010
Australia
T +61 2 8964 6258
extrablack.com.au

LD

LD1 Loading Dock ID



Plan
Scale 1:500



Plan
Scale 1:100

Elevation A

Issued for SSDA			
Revisions			
A	250325	KH	Issued for SSDA
B	110425	KH	Issued for SSDA
C	200625	KH	Issued for SSDA

Client
Riverside Theatre & City of Parramatta

Scale As shown at A3

Project
Riverside Theatre

Drawing title
Loading Dock ID

Drawn KH | Checked RP

Date
250325

Job number
COP001

Drawing number
SW-DA-0009_Loading Dock ID

Signtype GEN | Revision C | Sheet size A3

ISSUED FOR SSDA

Reproduction of the whole or part of this document constitutes an infringement of copyright. The information ideas and concepts contained in this document are confidential. The recipient(s) of this document is prohibited from disclosing such information, ideas and concepts to any person without the prior written consent of Extrablack Pty Ltd.

Loading Dock Signage:
Height: 450mm
Width: 3600mm (to wrap building edges)
Depth: 30mm
Power: Yes

Sign Main Function:
Identify Loading dock entry to vehicles

Fabrication:
Fabricated aluminium 30mm d dimensional letters to wrap aluminium cladding.
Edges in bronze to match Lamella cladding with face illumination.

Illumination:
Internally face and halo illuminated with using sufficient LED to provide even and non-banding illumination in warm white.

Framework:
Suitable support frame mounted to the façade by sign manufacturer as per Engineers specifications.
All fixings, wiring and power sources are completely concealed with no elements visible.



Reference Image
Halo and face illumination

Extrablack

Level 5
15 Foster Street
Surry Hills NSW 2010
Australia
T +61 2 8964 6258
extrablack.com.au

Extrablack