

APPENDIX 6

Visual Analysis



Gundry Solar Farm

R27 mitigation analysis

Geospatial, analysis + 3D visualisation

Cambium Group
Derek Mascarenhas
Dr Emilie Mascarenhas

Visual impact + photography

Envisage Consulting
Stacey Brodbeck

Client

**Umwelt
lightsourcebp**

Date

22 April 2025

Version

01

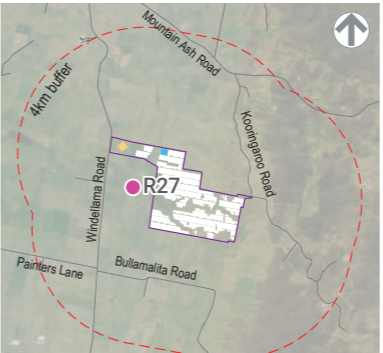


Figure 1
R27 (residential)
Photomontage without mitigation - Sensitivity and magnitude

GUNDARY SOLAR FARM | LANDSCAPE AND VISUAL IMPACT ASSESSMENT



Viewpoint ID	Distance to development	Viewpoint type	Viewpoint sensitivity	Scenic quality	Visual sensitivity	Occupied cells	Magnitude rating	Visual impact rating
R27	886 m	Residential	Moderate	Moderate	Moderate	20	Moderate	Moderate



Date	16/11/22
Time	09:35
Camera level	670.5m AHD
Camera coordinates	751849m E, 6139919m N
Camera	Canon EOS 6D Mark II (full frame DSLR)
Panorama type	50mm FL portrait
Camera bearing	75°
Vertical field of view	39.6° (cropped to 27°)
Horizontal field of view	180°
Project horizontal field of view	183°
Projected coordinate system	GDA2020 MGA Zone 55
Photography	Envisage Consulting

DISCLAIMER
Cambium Group Pty Ltd disclaims all liability for all claims, expenses, losses, damages and costs any person/company may incur as a result of
reliance on the accuracy or completeness of this document or its capability to achieve any purpose. © Cambium Group Pty Ltd 2025



Source: NSW Government Department of Planning and Environment, Technical Supplement - Landscape and Visual Impact Assessment - Large Scale Solar Energy Guideline (2022), Esri, Maxar, Geoeye (2024), Commonwealth of Australia (Geoscience Australia) (2024), Elvis Elevation and Depth - Foundation Spatial Data (2023), Lightsourcesbp (2024), Umwelt (2024), Envisage Consulting (2025), Cambium Group (2025).

031273_GDY_LVIA_V2_R27_(residential)_PM_180°_240614_v02

GUNDARY SOLAR FARM | LANDSCAPE AND VISUAL IMPACT ASSESSMENT

This photograph was captured on a full frame Digital single-lens reflex (DSLR) camera using a 50mm focal length. It has been derived from stitched panoramic photography representing a 180° horizontal field of view (HFOV) and a 27° vertical field of view (VFOV) and was subsequently cropped to represent a single frame representing 39.6° HFOV and 27° VFOV.

Due to page frame constraints, the top of this photograph has been cropped by 2° resulting in a residual 39.6° HFoV and a 25° VFoV.

Distributed battery energy storage system

Solar farm

Access road

CAMBIUM GROUP
Visual communication science

Date	16/11/22
Time	09:35
Camera level	670.5m AHD
Camera coordinates	751849m E, 6139919m N
Camera	Canon EOS 6D Mark II (full frame DSLR)
Panorama type	50mm FL portrait
Camera bearing	75°
Vertical field of view	27° (cropped to 25°)
Horizontal field of view	39.6°
Project horizontal field of view	183°
Projected coordinate system	GDA2020 MGA Zone 55
Photography	Envisage Consulting

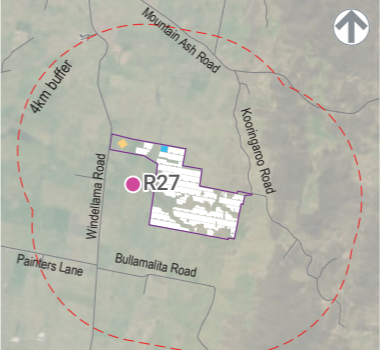
Date	16/11/22
Time	09:35
Camera level	670.5m AHD
Camera coordinates	751849m E, 6139919m N
Camera	Canon EOS 6D Mark II (full frame DSLR)
Panorama type	50mm FL portrait
Camera bearing	75°
Vertical field of view	27° (cropped to 25°)
Horizontal field of view	39.6°
Project horizontal field of view	183°
Projected coordinate system	GDA2020 MGA Zone 55
Photography	Envisage Consulting

Figure 3
R27 (residential)
Photomontage with mitigation - Sensitivity and magnitude

GUNDARY SOLAR FARM | LANDSCAPE AND VISUAL IMPACT ASSESSMENT



Viewpoint ID	Distance to development	Viewpoint type	Viewpoint sensitivity	Scenic quality	Visual sensitivity	Occupied cells	Magnitude rating	Visual impact rating
R27	886 m	Residential	Moderate	Moderate	Moderate	13	Low	Low



R27 site context



R27 detail

Date	16/11/22
Time	09:35
Camera level	670.5m AHD
Camera coordinates	751849m E, 6139919m N
Camera	Canon EOS 6D Mark II (full frame DSLR)
Panorama type	50mm FL portrait
Camera bearing	75°
Vertical field of view	39.6° (cropped to 27°)
Horizontal field of view	180°
Project horizontal field of view	183°
Projected coordinate system	GDA2020 MGA Zone 55
Photography	Envisage Consulting

DISCLAIMER
Cambium Group Pty Ltd disclaims all liability for all claims, expenses, losses, damages and costs any person/company may incur as a result of
reliance on the accuracy or completeness of this document or its capability to achieve any purpose. © Cambium Group Pty Ltd 2025



Source: NSW Government Department of Planning and Environment, Technical Supplement - Landscape and Visual Impact Assessment - Large Scale Solar Energy Guideline (2022), Esri, Maxar, Geoeye (2024), Commonwealth of Australia (Geoscience Australia) (2024), Elvis Elevation and Depth - Foundation Spatial Data (2023), Lightsourcesb (2024), Umwelt (2024), Envisage Consulting (2025), Cambium Group (2025).

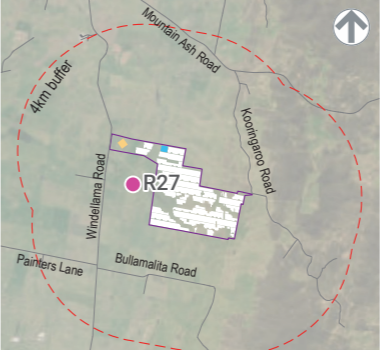
031273_GDY_LVIA_V2_R27_(residential)_PM_mitigation_180°_250422_v01

Figure 4
R27 (residential)
Unoccupied cells post mitigation

GUNDARY SOLAR FARM | LANDSCAPE AND VISUAL IMPACT ASSESSMENT



Viewpoint ID	Distance to development	Viewpoint type	Viewpoint type sensitivity	Scenic quality	Overall viewpoint sensitivity	Occupied cells without mitigation	Occupied cells with mitigation	Magnitude rating	Visual impact rating	Effective cell reduction with mitigation
R27	886 m	Residential	Moderate	Moderate	Moderate	20	13	Low	Low	7



Date	16/11/22
Time	09:35
Camera level	670.5m AHD
Camera coordinates	751849m E, 6139919m N
Camera	Canon EOS 6D Mark II (full frame DSLR)
Panorama type	50mm FL portrait
Camera bearing	75°
Vertical field of view	39.6° (cropped to 27°)
Horizontal field of view	180°
Project horizontal field of view	183°
Projected coordinate system	GDA2020 MGA Zone 55
Photography	Envisage Consulting

DISCLAIMER
Cambium Group Pty Ltd disclaims all liability for all claims, expenses, losses, damages and costs any person/company may incur as a result of
reliance on the accuracy or completeness of this document or its capability to achieve any purpose. © Cambium Group Pty Ltd 2025



Source: NSW Government Department of Planning and Environment, Technical Supplement - Landscape and Visual Impact Assessment - Large Scale Solar Energy Guideline (2022), Esri, Maxar, Geoeye (2024), Commonwealth of Australia (Geoscience Australia) (2024), Elvis Elevation and Depth - Foundation Spatial Data (2023), Lightsourcesbp (2024), Umwelt (2024), Envisage Consulting (2025), Cambium Group (2025).

031273_GDY_LVIA_V2_R27_(residential)_PM_mitigation_analysis_180°_250222_v01

Figure 5
R27 (residential)
Photomontage with mitigation - Visual impact

GUNDARY SOLAR FARM | LANDSCAPE AND VISUAL IMPACT ASSESSMENT



DISCLAIMER
Cambium Group Pty Ltd disclaims all liability for all claims, expenses, losses, damages and costs any person/company may incur as a result of
reliance on the accuracy or completeness of this document or its capability to achieve any purpose. © Cambium Group Pty Ltd 2025



Source: NSW Government Department of Planning and Environment, Technical Supplement - Landscape and Visual Impact Assessment - Large Scale Solar Energy Guideline (2022), Earl, Maxar, Geoeye (2024), Commonwealth of Australia (Geoscience Australia) (2024), Elvis Elevation and Depth - Foundation Spatial Data (2023), Lightsourcebp (2024), Umwelt (2024), Envisage Consulting (2025), Cambium Group (2025).

031273_GDY_LVIA_V2_R27_(residential)_PM_mitigation_40°_250422_v01

Figure 6
R27 (residential)
Occupied cell analysis

GUNDARY SOLAR FARM | LANDSCAPE AND VISUAL IMPACT ASSESSMENT



Figure 7
Mitigation overshadowing analysis

GUNDARY SOLAR FARM | LANDSCAPE AND VISUAL IMPACT ASSESSMENT

