

Receivers within 4km of the project boundary

All residences within 4km of the project boundary are indicated on this map and marked as receivers for the purposes of the Landscape and Visual Impact Assessment (LVIA).

Design refinements or mitigations:

- Refinements to the layout and design, including removal of 50ha of the most visible panels and relocation of the centralised Battery Energy Storage System (BESS).
- Delivery of a comprehensive LVIA, including photomontages from impacted residences and key public viewpoints.
- Development of visual screening and landscaping plans.
- The project assessment also considered the visual impact of the project to Goulburn as a regional city.

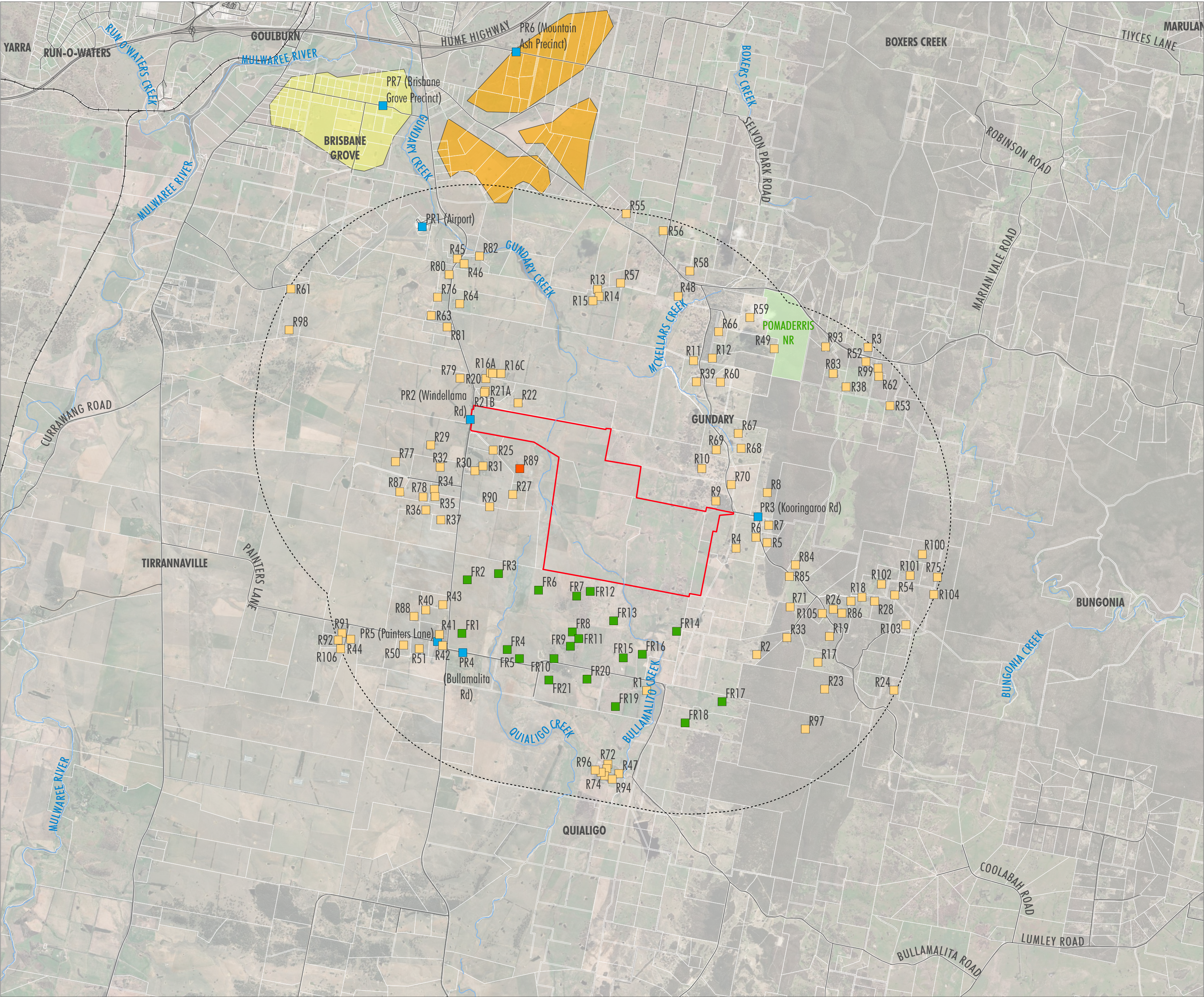


FIGURE 2.3

Receivers

- Legend**
- Potential Future Residences (Rosedale Subdivision)
 - Public Receivers
 - Non-associated Residences
 - Associated / Host Residence
 - Roads
 - Railway
 - Watercourses
 - Project Area (4km buffer)
 - Project Area
 - Brisbane Grove Precinct
 - Mountain Ash Precinct



0 1,000 2,000
Meters

Scale: 1:0 at A4
GDA 1994 MGA Zone 55

This document and the information are subject to Terms and Conditions and Umwelt (Australia) Pty Ltd ("Umwelt") Copyright in the drawings, information and data recorded ("the information") is the property of Umwelt. This document and the information are solely for the use of the authorized recipient and this document may not be used, copied or reproduced in whole or part for any purpose other than that which it was supplied by Umwelt. Umwelt makes no representation, undertakes no duty and accepts no responsibility to any third party who may use or rely upon this document or the information.

APPROVED FOR AND ON BEHALF OF Umwelt