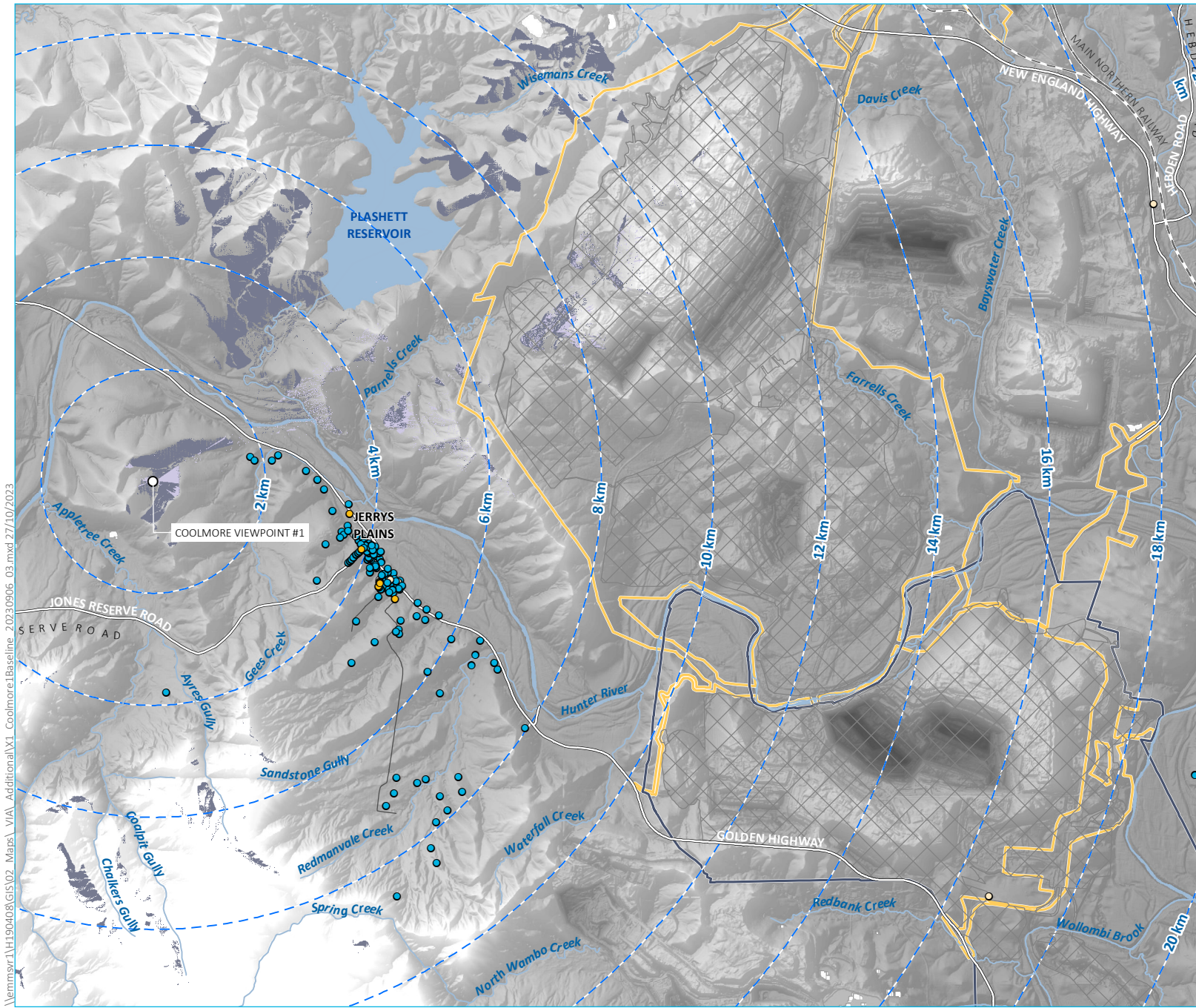

Appendix J

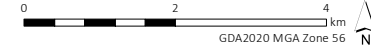
Additional viewshed analysis and photomontages



- KEY**
- HVO North proposed development consent boundary
 - HVO South proposed development consent boundary
 - Approved disturbance area
 - Viewpoint
 - Distance from viewpoint (2 km intervals)
 - Visible landscape elements - accounting for shielding features in the landscape
 - Visible landscape elements - bare earth surface
- Existing environment**
- Rail line
 - Major road
 - Local road
 - Named watercourse
 - Named waterbody
- Receptor**
- Community infrastructure
 - Private - commercial
 - Private - residential

\\lemmsvr1\H190408\GIS\02_Maps_VIA_Additional\X1_Coolmore\Baseline_2023\0906_03.mxd 27/10/2023

Source: EMM (2023); HVO (2023); DFSI (2017); DPE (2021)

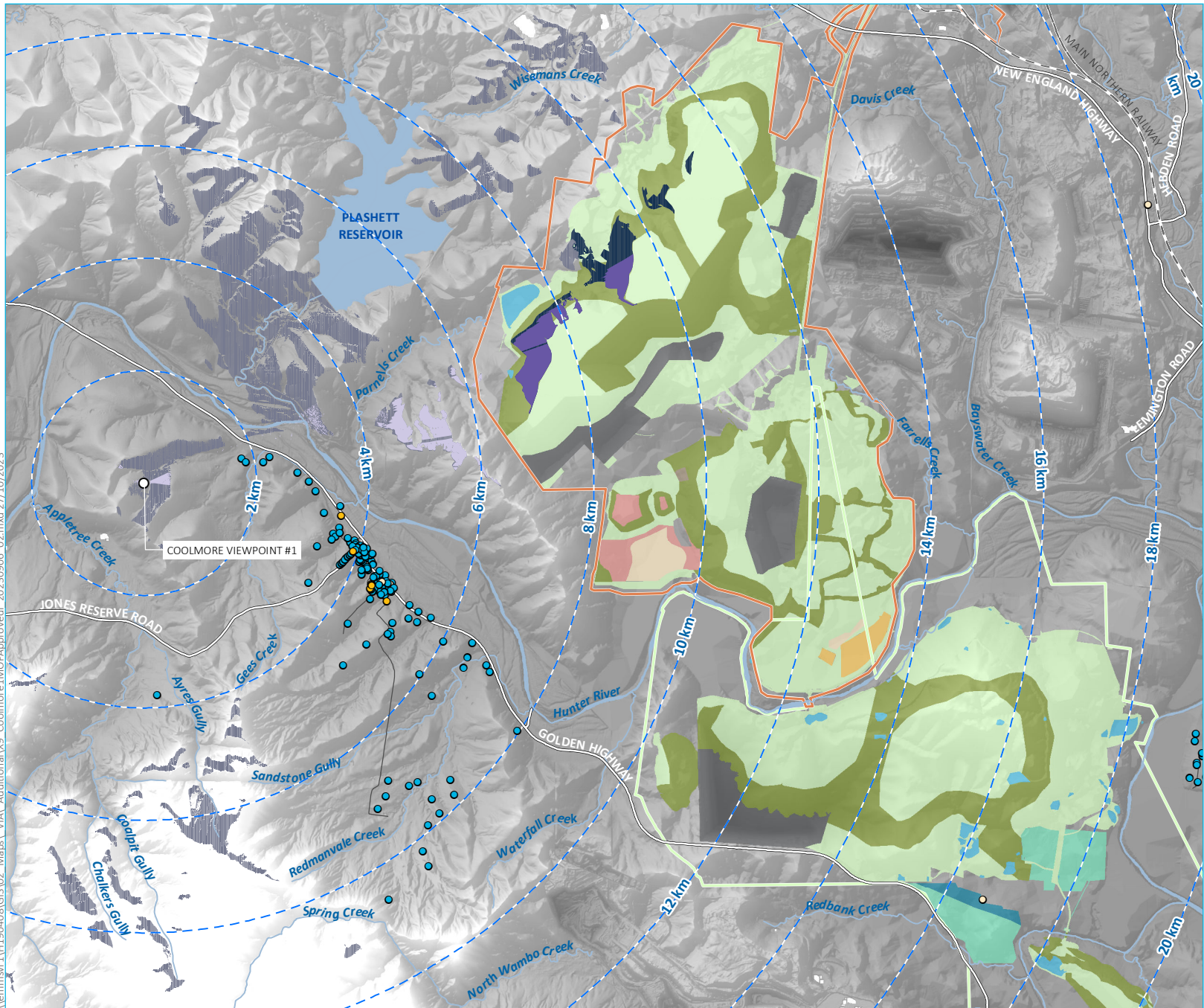


Viewshed analysis –
Coolmore Viewpoint 1 –
Visibility baseline assessment

HVO Continuation Project
Submissions Report
Figure J.1



\\lemmsvr1\H190408\GIS\02_Maps_VIA_Additional\X9_Coolmore\IMOP\Approved\ 20230906_02.mxd 27/10/2023



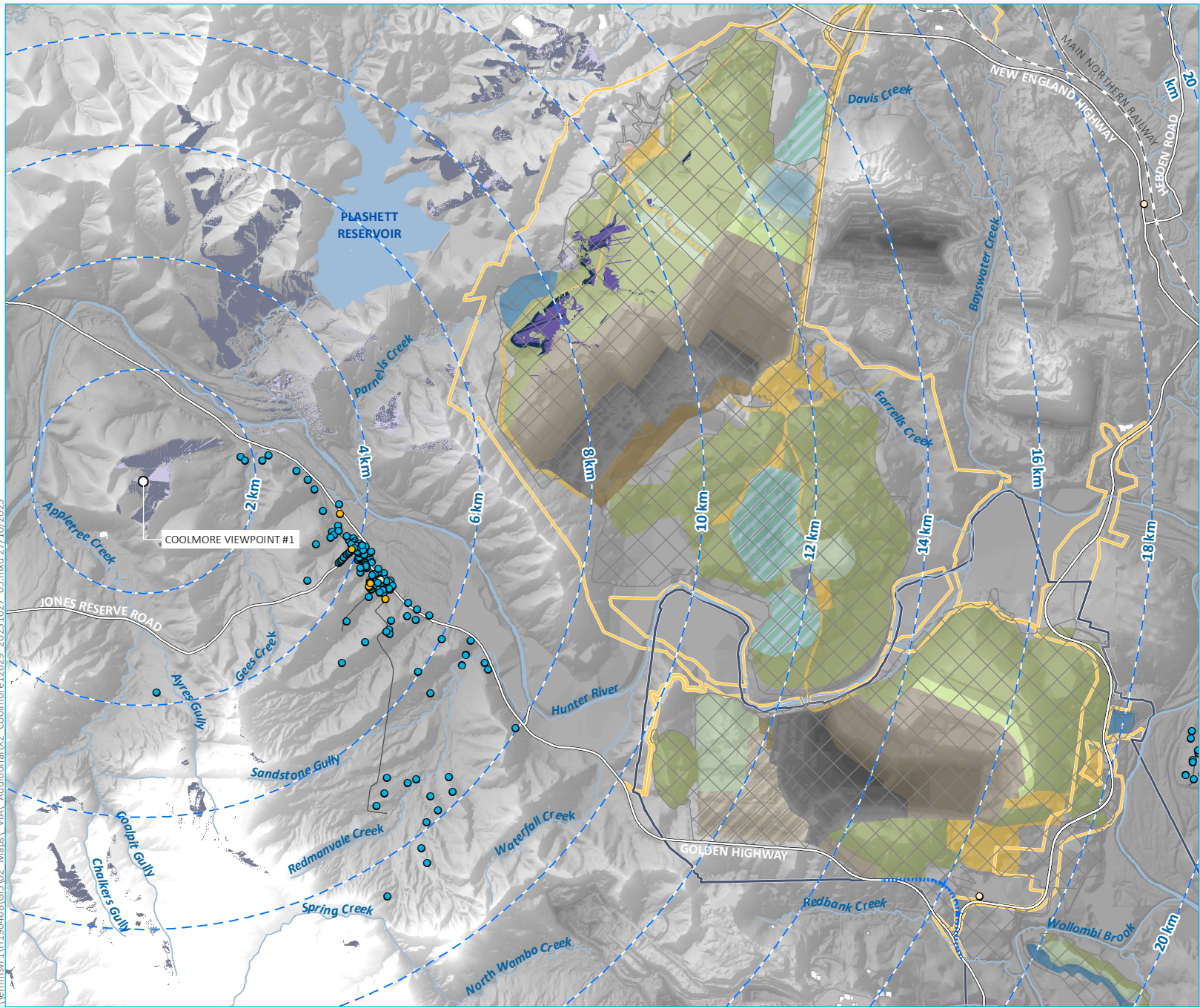
- KEY**
- Existing HVO North development consent boundary (DA 450-10-2003)
 - Existing HVO South project approval boundary (PA 06-0261)
 - Viewpoint
 - Distance from viewpoint (2 km intervals)
 - Visible project elements - accounting for shielding features in the landscape
 - Visible project elements - bare earth surface
 - Visible landscape elements - accounting for shielding features in the landscape
 - Visible landscape elements - bare earth surface
- Final land use domain**
- Native Ecosystem | Native Woodland
 - Native Ecosystem | Central Hunter Grey Box Ironbark Woodland
 - Agricultural - Grazing | Pasture
 - Agricultural - Grazing | Class 1 Agricultural Land
 - Agricultural - Grazing | Class 2 Agricultural Land
 - Agricultural - Grazing | Class 3 Agricultural Land
 - Water Management Areas
 - Final Void
- Approved mining areas not contained in RMP PA 06_0261**
- Grassland
 - Wildlife corridor
- Existing environment**
- Rail line
 - Major road
 - Local road
 - Named watercourse
 - Named waterbody
- Receptor**
- Community infrastructure
 - Private - commercial
 - Private - residential

Viewshed analysis –
Coolmore Viewpoint 1 –
Approved final landform

HVO Continuation Project
Submissions Report
Figure J.2



Source: EMM (2023); HVO (2023); DFSI (2017); DPE (2021)



- KEY**
- HVO North proposed development consent boundary
 - HVO South proposed development consent boundary
 - Approved disturbance area
 - Alternative Golden Highway
 - Lemington Road realignment
 - Viewpoint
 - Distance from viewpoint (2 km intervals)
 - Visible project elements - accounting for shielding features in the landscape
 - Visible project elements - bare earth surface
 - Visible landscape elements - accounting for shielding features in the landscape
 - Visible landscape elements - bare earth surface
- Year 7 indicative mine plan**
- Active emplacement area
 - Inactive emplacement area
 - Active mining area
 - Inactive active mining area
 - Active tailings emplacement
 - Inactive tailings emplacement/capping in progress
 - Infrastructure/access
 - Preparation area
 - Product coal stockpile
 - ROM coal stockpile
 - Rehabilitation
 - Shaping for final landform
 - Temporary stabilisation
 - Water storage
- Existing environment**
- Rail line
 - Major road
 - Local road
 - Named watercourse
 - Named waterbody
- Receptor**
- Community infrastructure
 - Private - commercial
 - Private - residential

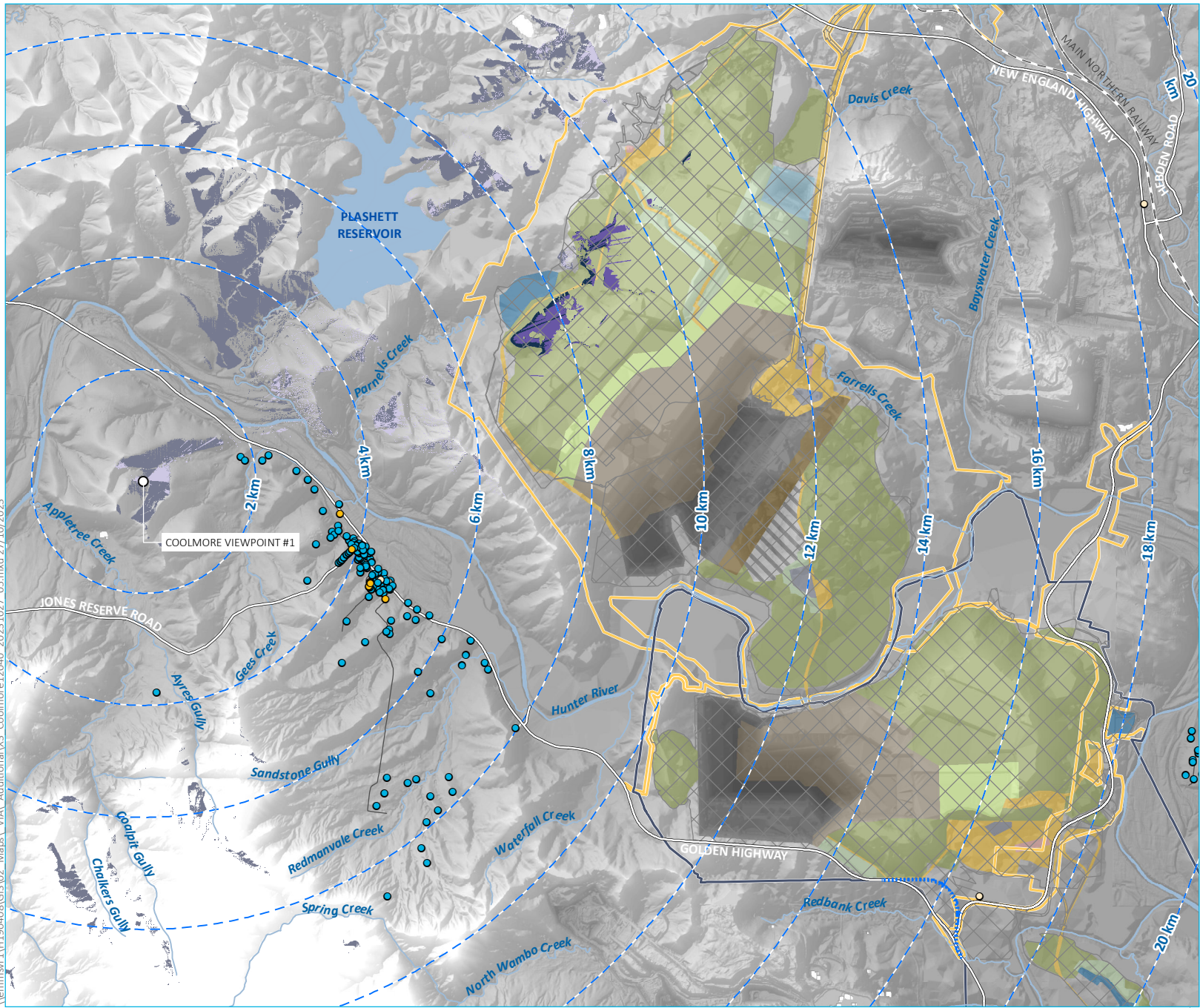
Viewshed analysis –
Coolmore Viewpoint 1 –
Year 7

HVO Continuation Project
Submissions Report
Figure J.3



\\lemmsvr1\H190408\GIS\02_Maps_VIA_Additional\X2_Coolmore\2029_05.mxd 27/10/2023





- KEY**
- HVO North proposed development consent boundary
 - HVO South proposed development consent boundary
 - Approved disturbance area
 - Alternative Golden Highway
 - Lemington Road realignment
 - Viewpoint
 - Distance from viewpoint (2 km intervals)
 - Visible project elements - accounting for shielding features in the landscape
 - Visible project elements - bare earth surface
 - Visible landscape elements - accounting for shielding features in the landscape
 - Visible landscape elements - bare earth surface
 - Year 18 indicative mine plan**
 - Active emplacement area
 - Inactive emplacement area
 - Active mining area
 - Inactive active mining area
 - Active tailings emplacement
 - Inactive tailings emplacement/capping in progress
 - Infrastructure/access
 - Preparation area
 - Product coal stockpile
 - ROM coal stockpile
 - Rehabilitation
 - Shaping for final landform
 - Temporary stabilisation
 - Water storage
 - Existing environment**
 - Rail line
 - Major road
 - Local road
 - Named watercourse
 - Named waterbody
 - Receptor**
 - Community infrastructure
 - Private - commercial
 - Private - residential

Viewshed analysis –
Coolmore Viewpoint 1 –
Year 18

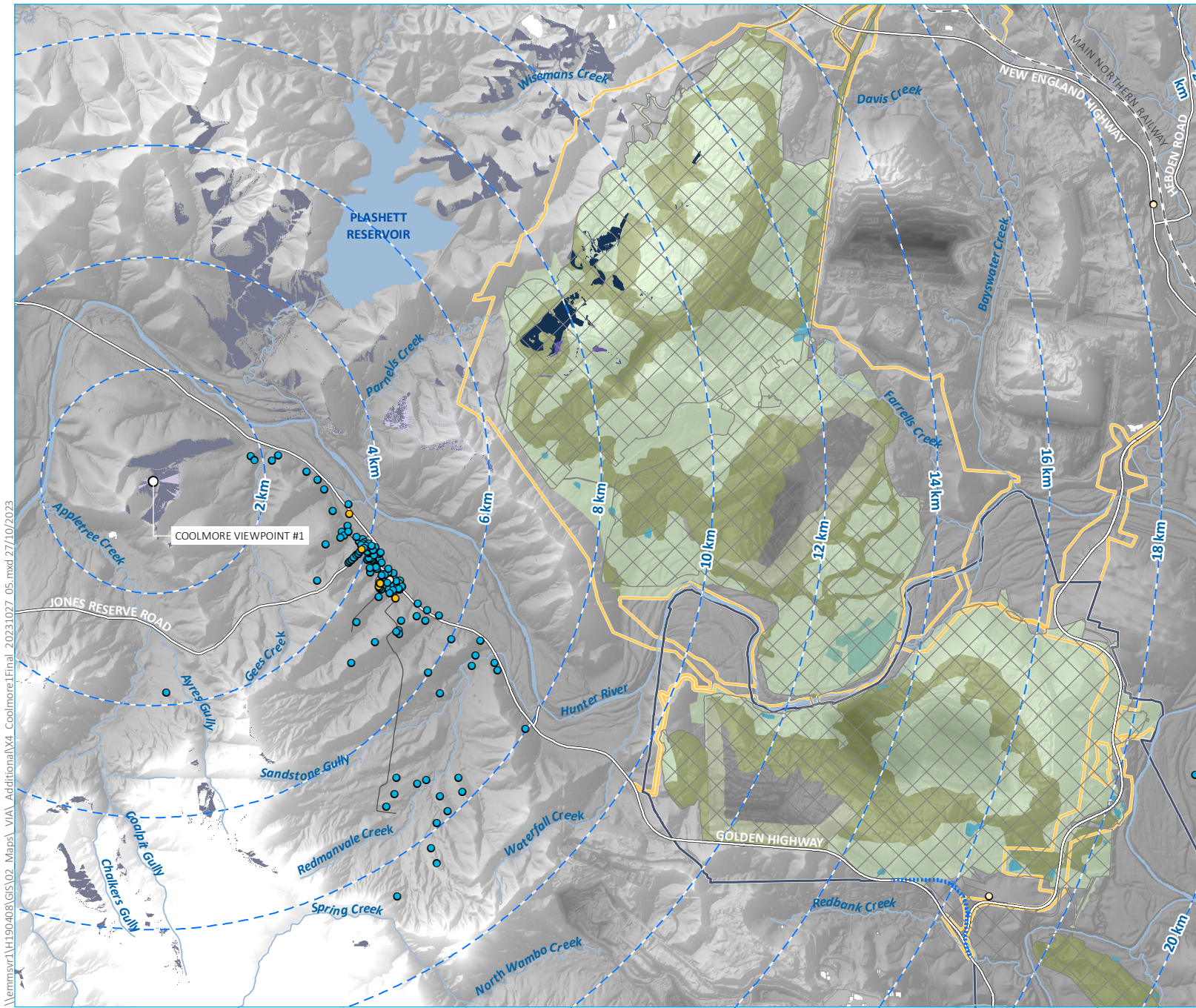
HVO Continuation Project
Submissions Report
Figure J.4



\\lemmsvr1\H190408\GIS\02_Maps_VIA_Additional\X3_Coolmore\12040_2023\1027_05.mxd 27/10/2023

Source: EMM (2023); HVO (2023); DFSI (2017); DPE (2021)





- KEY**
- HVO North proposed development consent boundary
 - HVO South proposed development consent boundary
 - Approved disturbance area
 - Alternative Golden Highway
 - Lemington Road realignment
 - Viewpoint
 - Distance from viewpoint (2 km intervals)
 - Visible project elements - accounting for shielding features in the landscape
 - Visible project elements - bare earth surface
 - Visible landscape elements - accounting for shielding features in the landscape
 - Visible landscape elements - bare earth surface
- Final land use domain**
- Domain A | Native ecosystem
 - Domain A | Native ecosystem (partial revegetation)
 - Domain B | Agriculture (grazing)
 - Domain C | Agriculture (alluvial land)
 - Domain F | Water management area
 - Domain J | Pit lake
- Existing environment**
- Rail line
 - Major road
 - Local road
 - Named watercourse
 - Named waterbody
- Receptor**
- Community infrastructure
 - Private - commercial
 - Private - residential

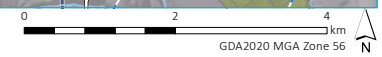
Viewshed analysis –
Coolmore Viewpoint 1 –
Proposed final landform

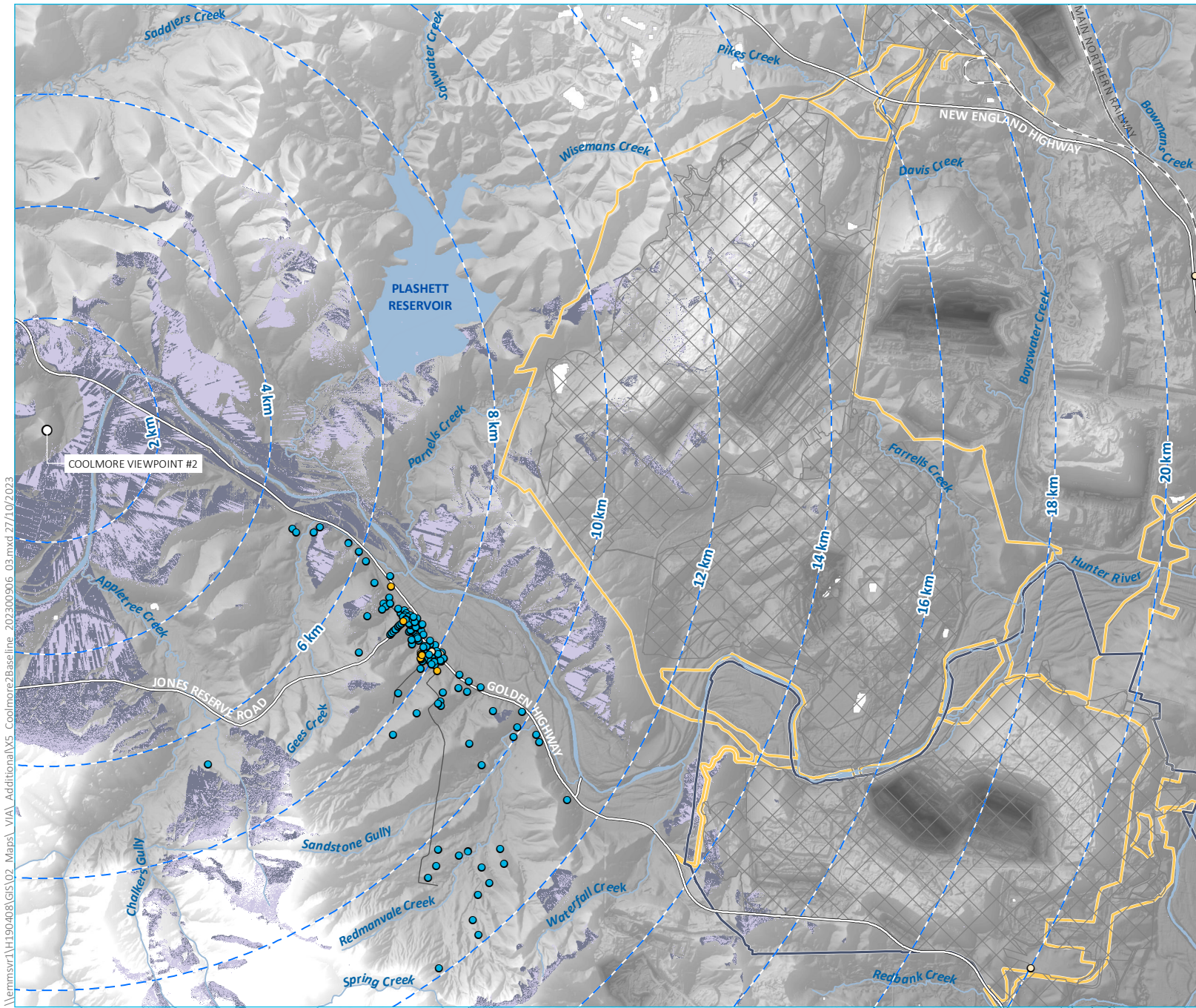
HVO Continuation Project
Submissions Report
Figure J.5



\\lemmsvr1\H190408\GIS\02_Maps_VIA_Additional\X4_Coolmore\Final_20231027_05.mxd 27/10/2023

Source: EMM (2023); HVO (2023); DFSI (2017); DPE (2021)





- KEY**
- HVO North proposed development consent boundary
 - HVO South proposed development consent boundary
 - Approved disturbance area
 - Viewpoint
 - Distance from viewpoint (2 km intervals)
 - Visible landscape elements - accounting for shielding features in the landscape
 - Visible landscape elements - bare earth surface
- Existing environment**
- Rail line
 - Major road
 - Local road
 - Named watercourse
 - Named waterbody
- Receptor**
- Community infrastructure
 - Private - commercial
 - Private - residential

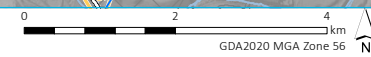
Viewshed analysis –
Coolmore Viewpoint 2 –
Visibility baseline assessment

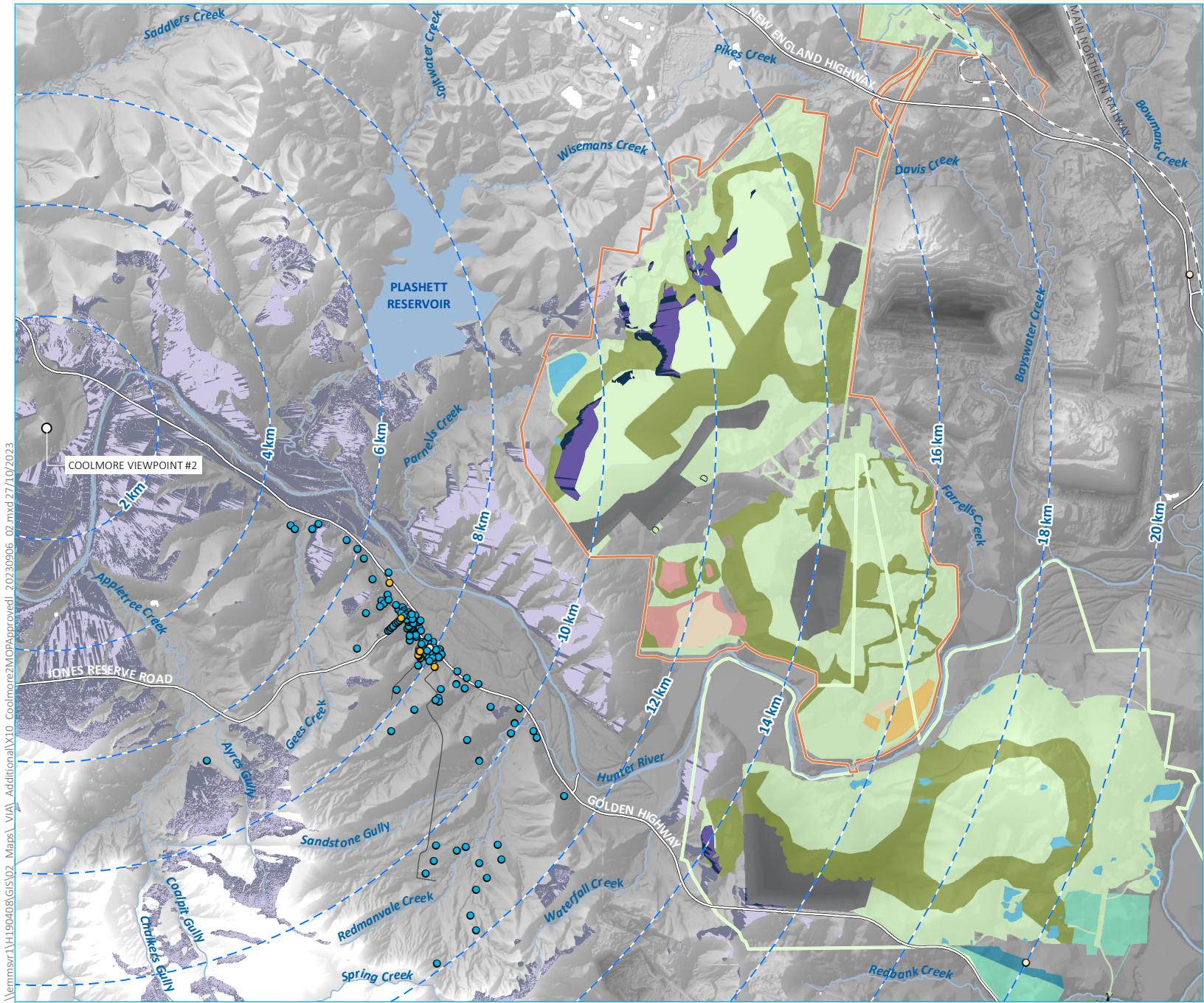
HVO Continuation Project
Submissions Report
Figure J.6



\\lemmsvr1\H190408\GIS\02_Maps_VIA_Additional\X5_Coolmore2\Baseline_202300906_03.mxd 27/10/2023

Source: EMM (2023); HVO (2023); DFSI (2017); DPE (2021)





- KEY**
- Existing HVO North development consent boundary (DA 450-10-2003)
 - Existing HVO South project approval boundary (PA 06_0261)
 - Viewpoint
 - Distance from viewpoint (2 km intervals)
 - Visible project elements - accounting for shielding features in the landscape
 - Visible project elements - bare earth surface
 - Visible landscape elements - accounting for shielding features in the landscape
 - Visible landscape elements - bare earth surface
- Final land use domain**
- Native Ecosystem | Native Woodland
 - Native Ecosystem | Central Hunter Grey Box Ironbark Woodland
 - Native Ecosystem | Swamp Oak Floodplain Forest
 - Agricultural - Grazing | Pasture
 - Agricultural - Grazing | Class 1 Agricultural Land
 - Agricultural - Grazing | Class 2 Agricultural Land
 - Agricultural - Grazing | Class 3 Agricultural Land
 - Water Management Areas
 - Final Void
- Approved mining areas not contained in RMP PA 06_0261**
- Grassland
 - Wildlife corridor
- Existing environment**
- Rail line
 - Major road
 - Local road
 - Named watercourse
 - Named waterbody
- Receptor**
- Community infrastructure
 - Private - commercial
 - Private - residential

Viewshed analysis –
Coolmore Viewpoint 2 –
Approved final landform

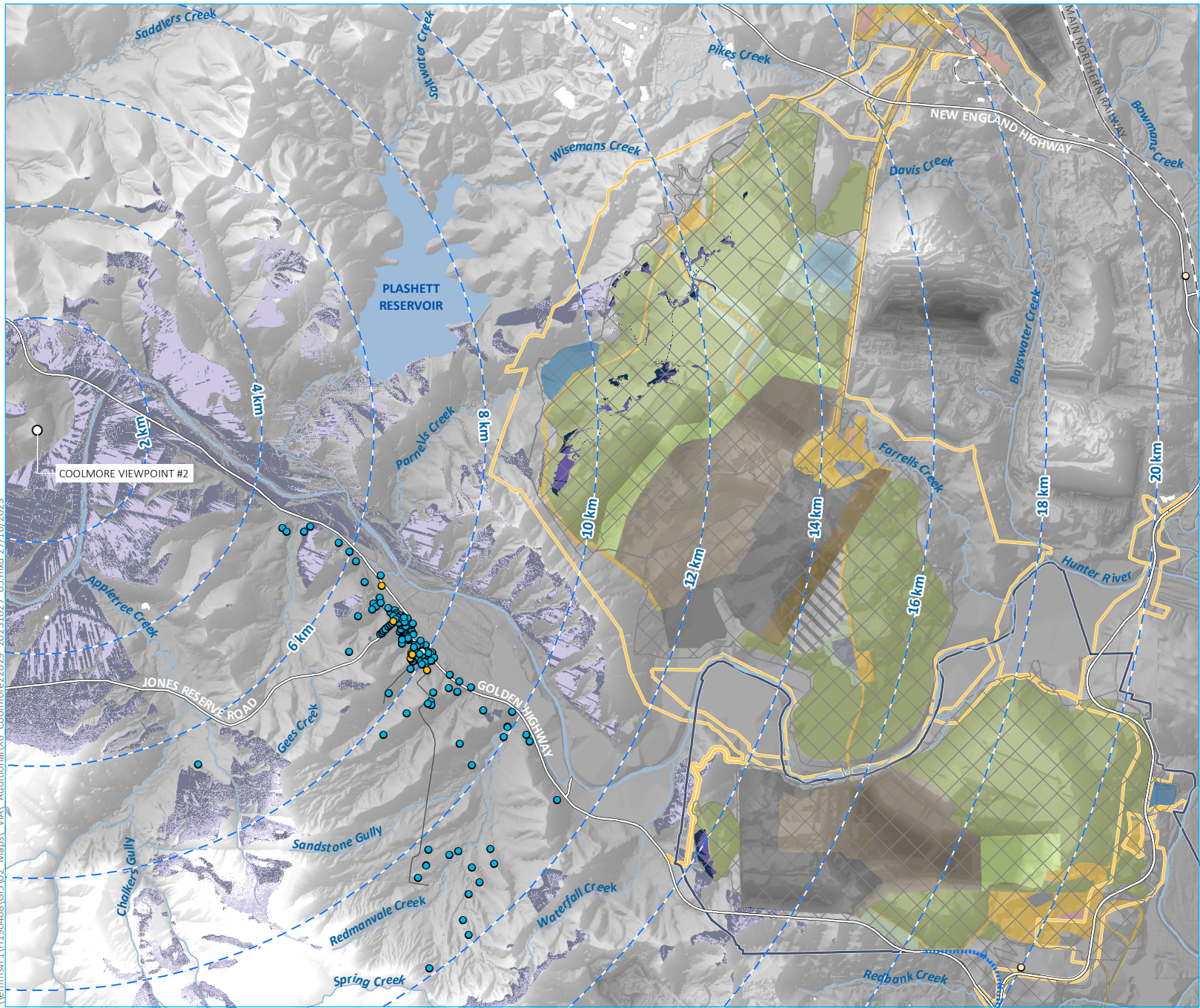
HVO Continuation Project
Submissions Report
Figure J.7



\\lemmsvr1\H190408\GIS\02_Maps_VIA_Additional\X10_Coolmore\MOP\Approved\ 20230906_02.mxd 27/10/2023

Source: EMM (2023); HVO (2023); DFSI (2017); DPE (2021)





- KEY**
- HVO North proposed development consent boundary
 - HVO South proposed development consent boundary
 - Approved disturbance area
 - Alternative Golden Highway
 - Lemington Road realignment
 - Viewpoint
 - Distance from viewpoint (2 km intervals)
 - Visible project elements - accounting for shielding features in the landscape
 - Visible project elements - bare earth surface
 - Visible landscape elements - accounting for shielding features in the landscape
 - Visible landscape elements - bare earth surface
- Year 7 indicative mine plan**
- Active emplacement area
 - Active mining area
 - Inactive active mining area
 - Active tailings emplacement
 - Infrastructure/access
 - Preparation area
 - Product coal stockpile
 - ROM coal stockpile
 - Rehabilitation
 - Shaping for final landform
 - Temporary stabilisation
 - Water storage
- Existing environment**
- Rail line
 - Major road
 - Local road
 - Named watercourse
 - Named waterbody
- Receptor**
- Community infrastructure
 - Private - commercial
 - Private - residential

Viewshed analysis –
Coolmore Viewpoint 2 –
Year 7

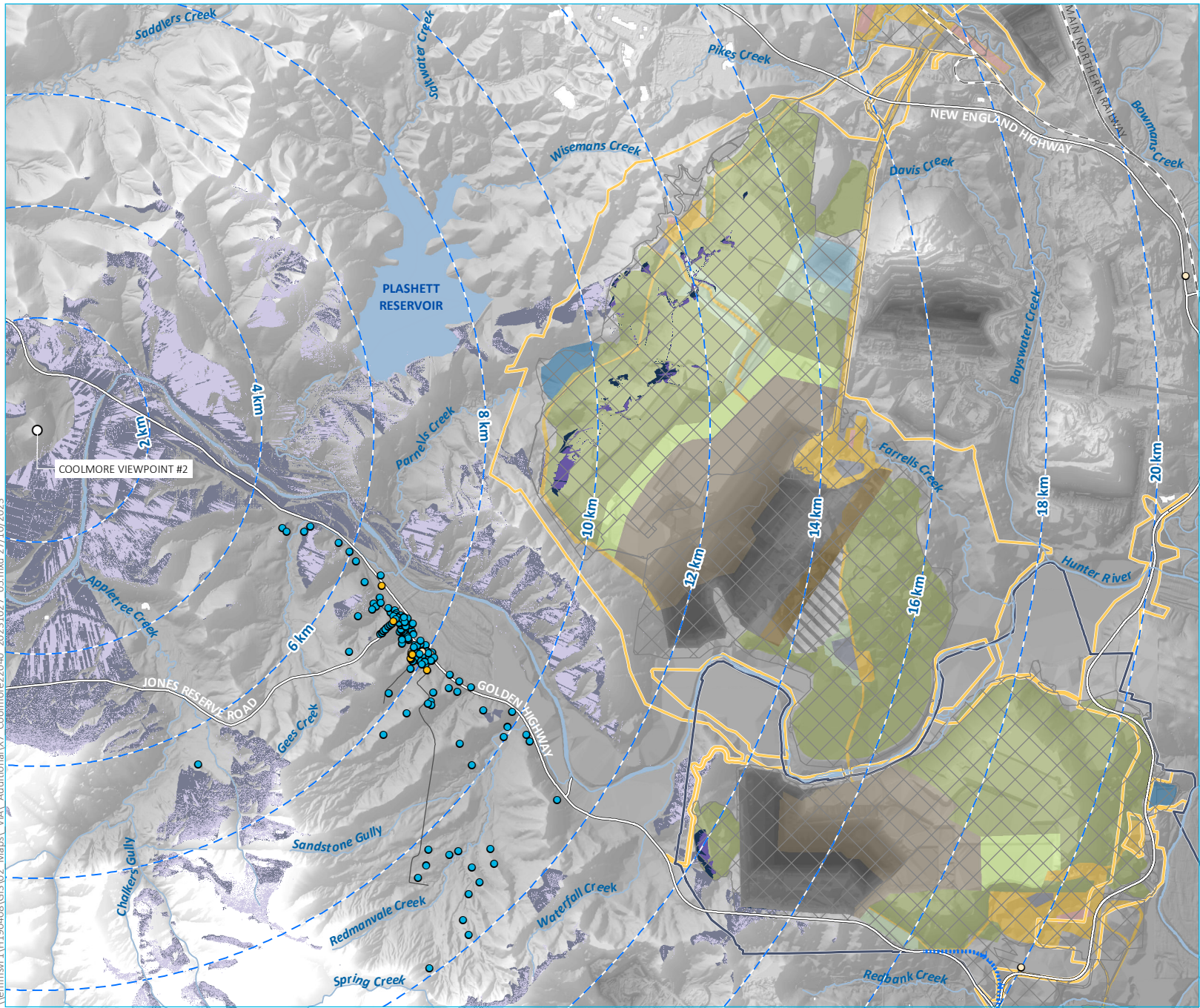
HVO Continuation Project
Submissions Report
Figure J.8



\\lemmsvr1\H190408\GIS\02_Maps_VA\Additional\X6_Coolmore2029_20231027_05.mxd 27/10/2023

Source: EMM (2023); HVO (2023); DFSI (2017); DPE (2021)





- KEY**
- HVO North proposed development consent boundary
 - HVO South proposed development consent boundary
 - Alternative Golden Highway
 - Lemington Road realignment
 - Viewpoint
 - Distance from viewpoint (2 km intervals)
 - Visible project elements - accounting for shielding features in the landscape
 - Visible project elements - bare earth surface
 - Visible landscape elements - accounting for shielding features in the landscape
 - Visible landscape elements - bare earth surface
 - Approved disturbance area
 - Year 18 indicative mine plan**
 - Active emplacement area
 - Active mining area
 - Inactive active mining area
 - Active tailings emplacement
 - Infrastructure/access
 - Preparation area
 - Product coal stockpile
 - ROM coal stockpile
 - Rehabilitation
 - Shaping for final landform
 - Temporary stabilisation
 - Water storage
 - Existing environment**
 - Rail line
 - Major road
 - Local road
 - Named watercourse
 - Named waterbody
 - Receptor**
 - Community infrastructure
 - Private - commercial
 - Private - residential

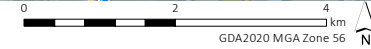
Viewshed analysis –
Coolmore Viewpoint 2 –
Year 18

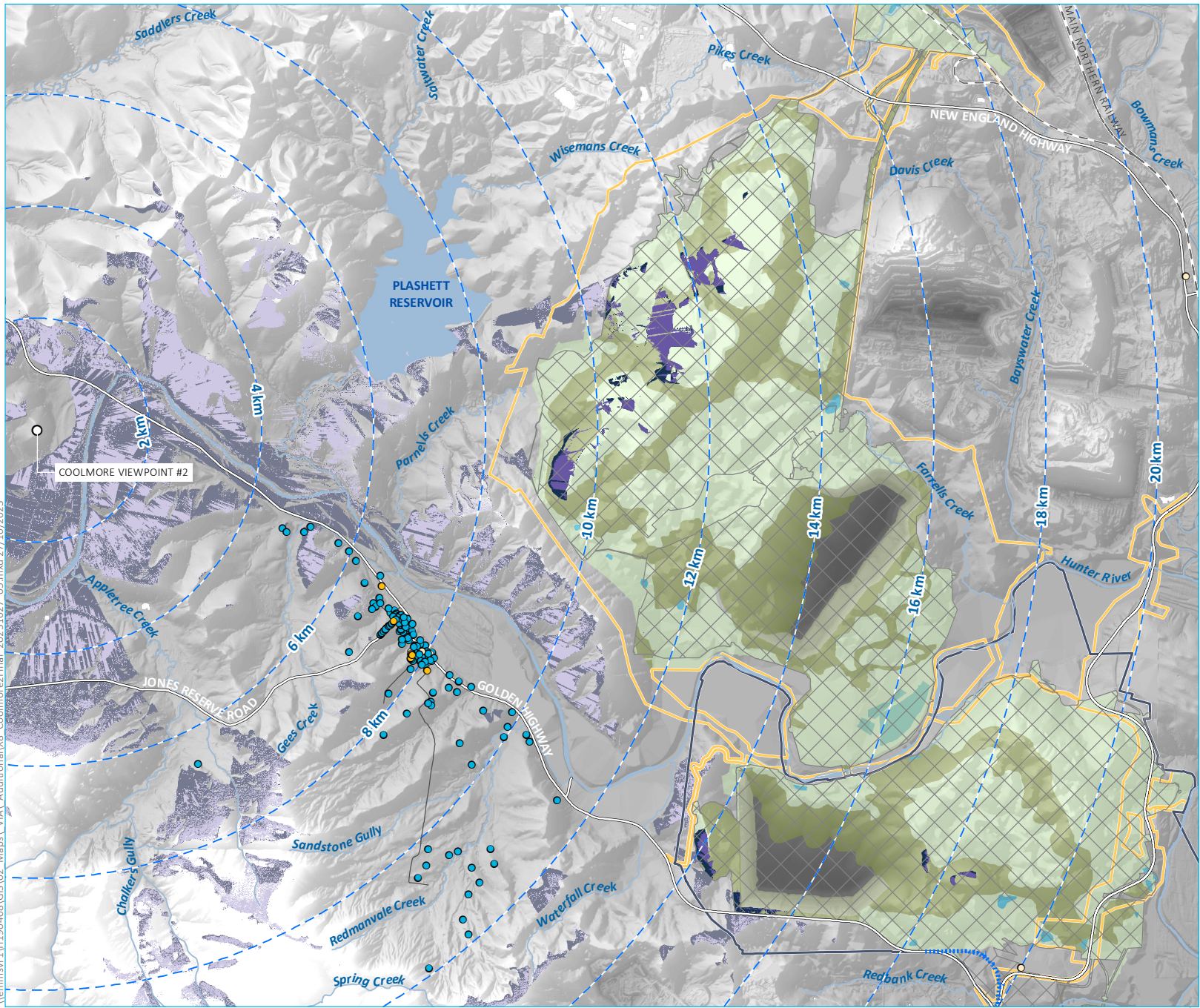
HVO Continuation Project
Submissions Report
Figure J.9



\\lemmsvr1\H190408\GIS\02_Maps_VIA_Additional\X7_Coolmore22040_20231027_05.mxd 27/10/2023

Source: EMM (2023); HVO (2023); DFSI (2017); DPE (2021)





- KEY**
- HVO North proposed development consent boundary
 - HVO South proposed development consent boundary
 - Approved disturbance area
 - Alternative Golden Highway
 - Lemington Road realignment
 - Viewpoint
 - Distance from viewpoint (2 km intervals)
 - Visible project elements - accounting for shielding features in the landscape
 - Visible project elements - bare earth surface
 - Visible landscape elements - accounting for shielding features in the landscape
 - Visible landscape elements - bare earth surface
- Final land use domain**
- Domain A | Native ecosystem
 - Domain A | Native ecosystem (partial revegetation)
 - Domain B | Agriculture (grazing)
 - Domain C | Agriculture (alluvial land)
 - Domain F | Water management area
 - Domain J | Pit lake
- Existing environment**
- Rail line
 - Major road
 - Local road
 - Named watercourse
 - Named waterbody
- Receptor**
- Community infrastructure
 - Private - commercial
 - Private - residential

Viewshed analysis –
Coolmore Viewpoint 2 –
Proposed final landform

HVO Continuation Project
Submissions Report
Figure J.10



\\lemmsvr1\h190408\GIS\02_Maps_VIA_Additional\X8_Coolmore2\Final_20231027_05.mxd 27/10/2023

Source: EMM (2023); HVO (2023); DFSI (2017); DPE (2021)



Viewpoint 1



Photographic view of existing site

Viewpoint 1 - Currently approved landform



Photomontage with currently approved landform



Photomontage with currently approved landform

Viewpoint 1 - Year 7



Photomontage with Project - Year 7



Photomontage with Project - Year 7

Viewpoint 1 - Year 18



Photomontage with Project - Year 18



Photomontage with Project - Year 18

Viewpoint 1 - Final landform



Photomontage with Project - Final landform



Photomontage with Project - Final landform

Viewpoint 2



Photographic view of existing site

Viewpoint 2 - Currently approved landform



Photomontage with currently approved landform



Photomontage with currently approved landform

Viewpoint 2 - Year 7



Photomontage with Project - Year 7



Photomontage with Project - Year 7

Viewpoint 2 - Year 18



Photomontage with Project - Year 18



Photomontage with Project - Year 18

Viewpoint 2 - Final landform



Photomontage with Project - Final landform



Photomontage with Project - Final landform

Main Entry



Photographic view of existing site



Photomontage with proposed final landform behind visible hill.
Extents of the proposed final landform indicated by blue line.