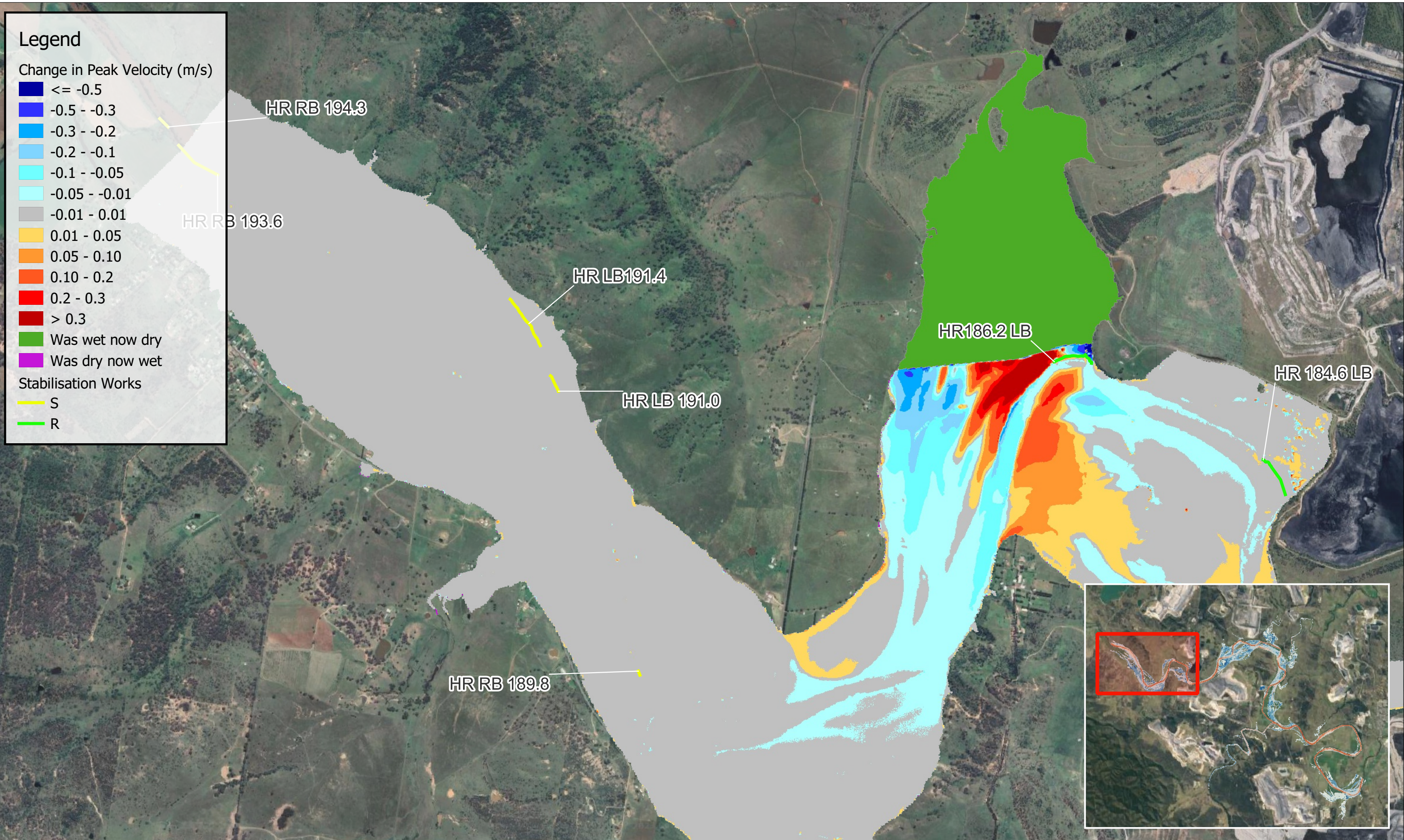

Appendix G

Bank stabilisation work impact figures

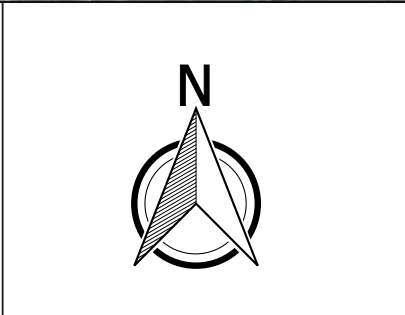


Suite 2, Level 5, 45 Hunter St Newcastle
NSW 2300

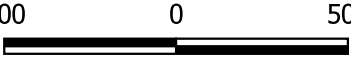
PO Box 787 Newcastle

www.engeny.com.au

P: 02 4926 1225

500 0 500 m

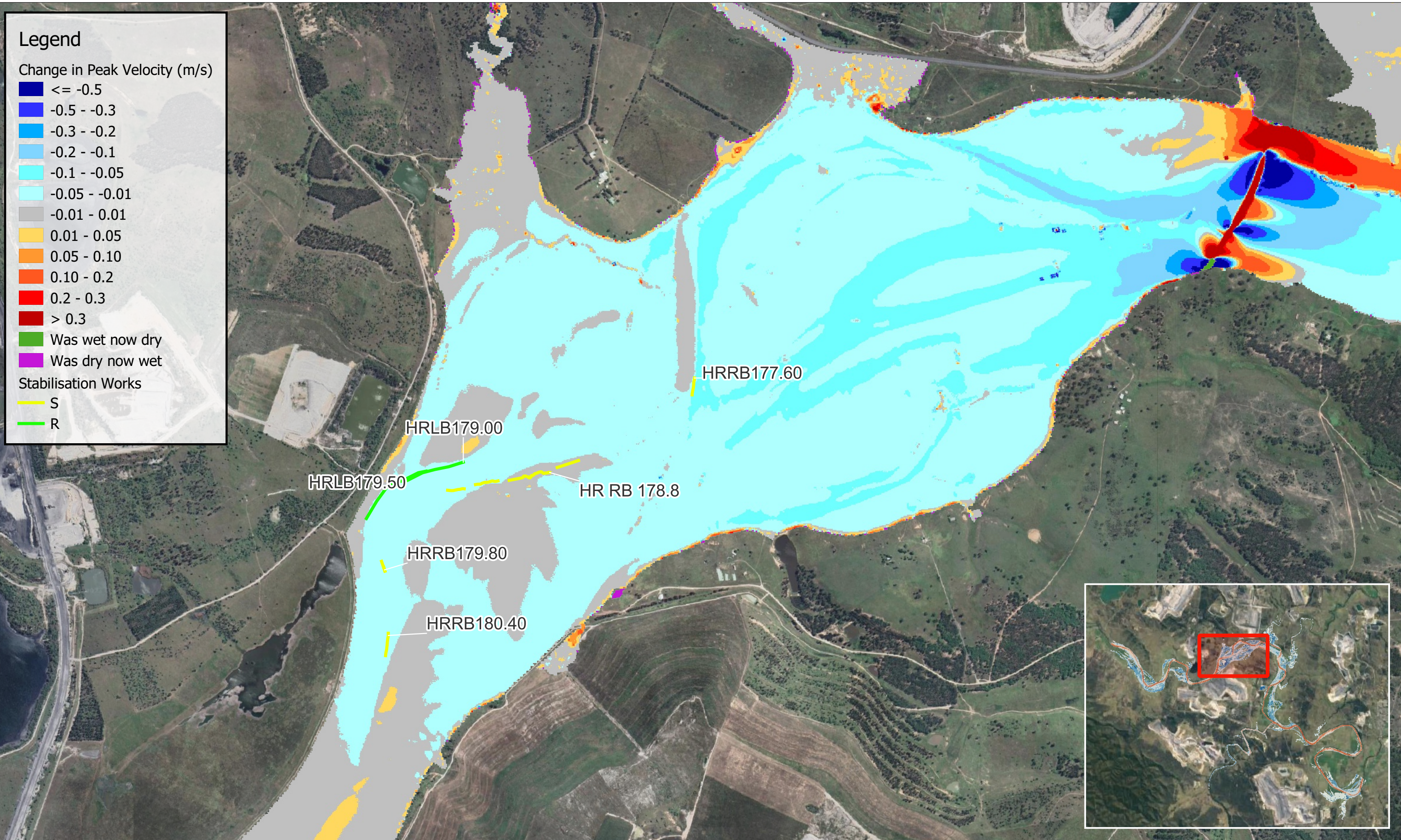


Map Projection: Transverse Mercator
Horizontal Datum: Geocentric Datum of Australia
Vertical Datum: Australia Height Datum
Grid: Map Grid of Australia, Zone 56

HVO Continuation Project

1% AEP Afflux - Levee Impacts 1

Job Number: NC1013_001
Revision: 0
Drawn: RM
Checked: GC
Date: 20/6/2023



Legend

Change in Peak Velocity (m/s)

- <= -0.5
- 0.5 - -0.3
- 0.3 - -0.2
- 0.2 - -0.1
- 0.1 - -0.05
- 0.05 - -0.01
- 0.01 - 0.01
- 0.01 - 0.05
- 0.05 - 0.10
- 0.10 - 0.2
- 0.2 - 0.3
- > 0.3
- Was wet now dry
- Was dry now wet

Stabilisation Works

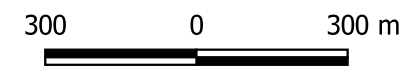
- S
- R

Suite 2, Level 5, 45 Hunter St Newcastle
NSW 2300

PO Box 787 Newcastle

www.engeny.com.au

P: 02 4926 1225

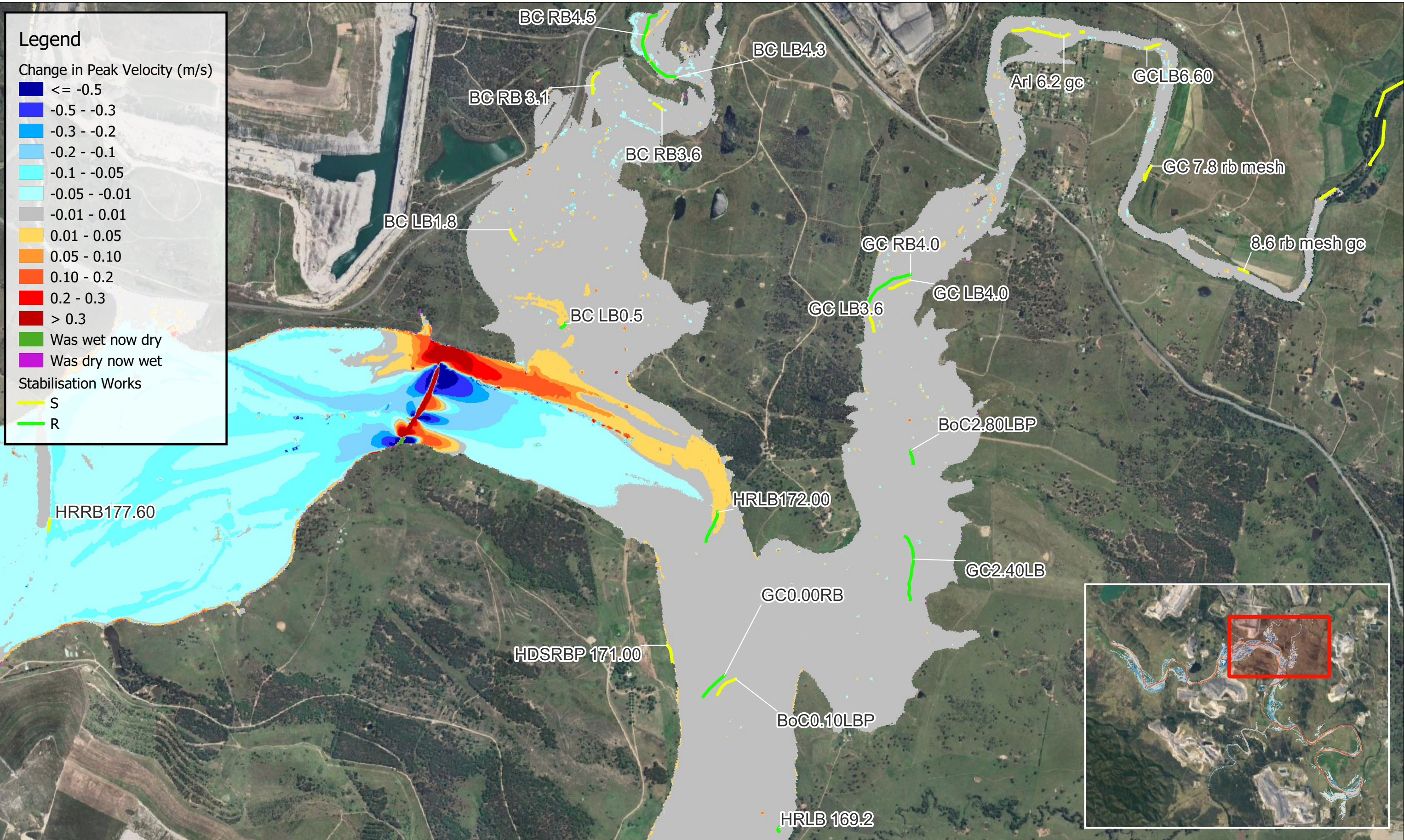


Map Projection: Transverse Mercator
Horizontal Datum: Geocentric Datum of Australia
Vertical Datum: Australia Height Datum
Grid: Map Grid of Australia, Zone 56

HVO Continuation Project

1% AEP Afflux - Levee Impacts 2

Job Number: NC1013_001
Revision: 0
Drawn: RM
Checked: GC
Date: 20/6/2023

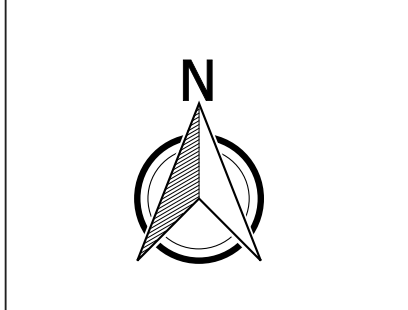


Suite 2, Level 5, 45 Hunter St Newcastle
NSW 2300


PO Box 787 Newcastle

www.engeny.com.au

P: 02 4926 1225

500 0 500 m



Map Projection: Transverse Mercator
Horizontal Datum: Geocentric Datum of Australia
Vertical Datum: Australia Height Datum
Grid: Map Grid of Australia, Zone 56

HVO Continuation Project

1% AEP Afflux - Levee Impacts 3

Job Number: NC1013_001
Revision: 0
Drawn: RM
Checked: GC
Date: 20/6/2023

Legend

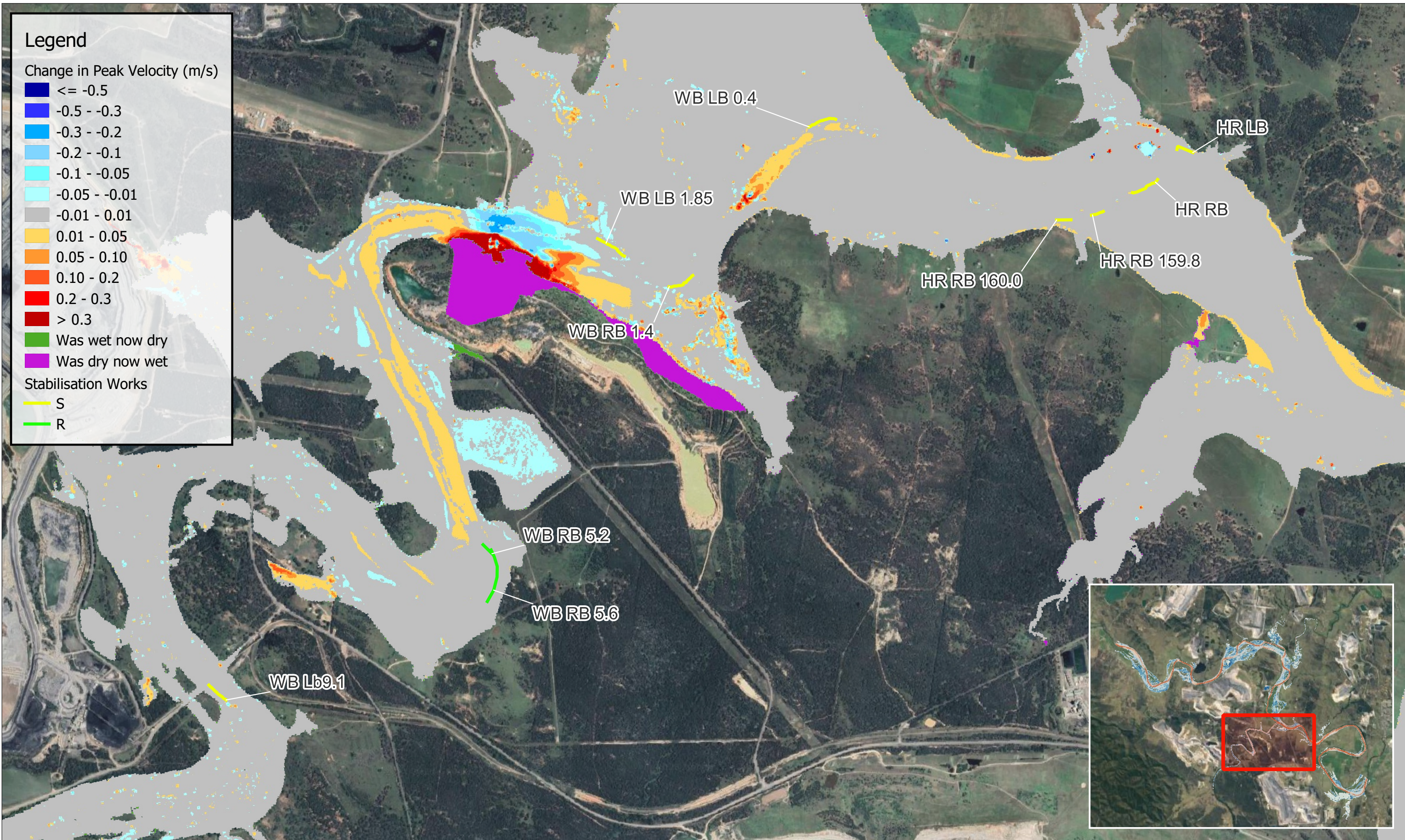
Change in Peak Velocity (m/s)

- <= -0.5
- 0.5 - -0.3
- 0.3 - -0.2
- 0.2 - -0.1
- 0.1 - -0.05
- 0.05 - -0.01
- 0.01 - 0.01
- 0.01 - 0.05
- 0.05 - 0.10
- 0.10 - 0.2
- 0.2 - 0.3
- > 0.3

- Was wet now dry
- Was dry now wet

Stabilisation Works

- S
- R



Suite 2, Level 5, 45 Hunter St Newcastle
NSW 2300

PO Box 787 Newcastle

www.engeny.com.au

P: 02 4926 1225



400 0 400 m



Map Projection: Transverse Mercator
Horizontal Datum: Geocentric Datum of Australia
Vertical Datum: Australia Height Datum
Grid: Map Grid of Australia, Zone 56

HVO Continuation Project

1% AEP Afflux - Levee Impacts 4

Job Number: NC1013_001

Revision: 0

Drawn: RM

Checked: GC

Date: 20/6/2023



Legend

Peak Velocity (m/s)

- <= 0.1
- 0.1 - 0.2
- 0.2 - 0.5
- 0.5 - 1
- 1 - 1.5
- 1.5 - 2
- 2 - 3
- > 3

Stabilisation Works

- S
- R

Suite 2, Level 5, 45 Hunter St Newcastle NSW 2300

PO Box 787 Newcastle

www.engeny.com.au

P: 02 4926 1225



1,900 0 1,900 m



Map Projection: Transverse Mercator
 Horizontal Datum: Geocentric Datum of Australia
 Vertical Datum: Australia Height Datum
 Grid: Map Grid of Australia, Zone 56

HVO Continuation Project

**Levee Impacts
 Baseline 1% AEP Flood Velocity**

Job Number: N1013_001
 Revision: 0
 Drawn: Rebecca McInnes
 Checked: GC
 Date: 20/6/2023



Legend

Peak Velocity (m/s)

- <= 0.1
- 0.1 - 0.2
- 0.2 - 0.5
- 0.5 - 1
- 1 - 1.5
- 1.5 - 2
- 2 - 3
- > 3

Stabilisation Works

- S
- R

Suite 2, Level 5, 45 Hunter St Newcastle NSW 2300

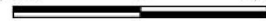
PO Box 787 Newcastle

www.engeny.com.au

P: 02 4926 1225



1,900 0 1,900 m



Map Projection: Transverse Mercator
 Horizontal Datum: Geocentric Datum of Australia
 Vertical Datum: Australia Height Datum
 Grid: Map Grid of Australia, Zone 56

HVO Continuation Project

**Levee Impacts
 Operational 1% AEP Flood Velocity**

Job Number: N1013_001
 Revision: 0
 Drawn: Rebecca McInnes
 Checked: GC
 Date: 20/6/2023