

23 December 2022

Project/File: 300303626 (Galungara Public School Stage 2 – School Transport Plan)

Rebecca Lehman

 School Infrastructure NSW
 Level 8, 259 George Street,
 Sydney NSW 2000

Dear Rebecca,

Reference: SSD-9368-Mod-5 – Request for Advice – Galungara Public School

This letter forms a response to a list of commentary provided by Transport for NSW in relation to the School Travel Plan that was included in the SSD-9368-Mod-5-Application. The response is provided in the following table.

Item	TfNSW Commentary	Stantec Response
1	<p>Implementation Plan: TfNSW acknowledges the STP has an Action Plan, and recommends this be re-named to an Implementation Plan and should include all of the initiatives and incentives within the STP, timing and completion dates to ensure the overall effectiveness of the STP. Each part of the Implementation Plan should be managed overall by a Travel Plan Coordinator/Steering Committee, as in previous meetings for this site, it was acknowledged the Principal was very busy. The Travel Plan Coordinator (TPC) should have the Principal approve all of the initiatives, but ultimately the TPC should be implementing all of the initiatives. The Implementation Plan should:</p> <ul style="list-style-type: none"> Identify the party or parties responsible for delivery and implementation of each element of the updated STP throughout various stages of the development lifecycle, including for its ongoing implementation, monitoring and review, for a period of at least 5 years post occupation certificate; Be updated both on an annual basis, and when future transport services are upgraded; and Be updated with tasks that are complete - there are still some tasks that have been put into the Plan that should be marked as complete for the opening. 	<p>Our template follows the TfNSW Action Plan and terminology which is agreed as state-wide guidance on their Travel Choices page. The GBCA recognise the template as meeting our Sustainable Transport requirements. TfNSW are not pursuing a name change.</p>
2	<p>Car Parking: Please advise when the temporary park on school grounds (of 31 car park spaces) will be repurposed / closed. TfNSW still recommends reducing the amount of carparking proposed using the council car park (80 car parking spaces for a staff of 70, plus 1,000 students by 2025) as this will further encourage car driving as a preference. Sustainable transport modes should be encouraged, consistent with the Future Transport Strategy in which Travel Demand Management (TDM) is one of TfNSW key actions.</p>	<p>Currently there is no temporary carpark on the school grounds. In order to comply with SSD Condition D18, 77 car parking spaces and five drop-off / pick-up spaces should be made available for the use of the school during school hours. Reducing the amount of carparking will result in non-compliance.</p>

Reference: SSD-9368-Mod-5 – Request for Advice – Galungara Public School

Item	TfNSW Commentary	Stantec Response																														
3	<p>Parking Management Strategy: Please incorporate a parking management strategy in the STP (into the Implementation Plan), that prioritises use by staff on a needs basis, eg. preference for parking for staff that are car-pooling or car sharing.</p>	<p>As per TfNSW Action Plan, a Parking Management Strategy is not required for inclusion in the Action Plan in the School Transport Plan. The staff parking requirements are addressed in the School Transport Plan in Section 1.4.2 of the Operational Transport and Access Management Plan (OTAMP).</p>																														
4	<p>Bicycle Parking and End of Trip (EoT): A good supply of quality EoT and bicycle parking will encourage walking and cycling mode shares. TfNSW appreciates that 56 covered bicycle spaces are available but would encourage these spaces to be increased to accommodate increased staffing and student numbers (70 staff and 1,000 students by 2025). Also, please advise how many EoT facilities are planned for staff and students, including showers, lockers and change rooms. TfNSW recommends that this bicycle parking and any EoT should be monitored over time to ensure sufficient supply to encourage active transport both to/from the site, for staff. The bicycle parking should be located at convenient locations within the development site, be safe, secured and under cover. Some further guidance on bicycle parking and end of trip facilities is available via Cycleway Design Toolbox.</p>	<p>Galungara Public School has 56 covered bicycle spaces and are located at a convenient location within the site. From the travel mode share “Show of Hands” survey conducted in August 2022 (shown in figures below), the number of bicycles (including scooters) was up to 47 which is accommodated with the existing bicycle facilities. The end of trip bicycle parking spaces are currently underutilised with sufficient spaces to allow for an increase in the number of students to cycle to school. EoT will be monitored to ensure active transport is encouraged.</p> <p>Figure 1: Student Travel Mode Share for AM Arrival Period</p> <table border="1"> <caption>Data for Figure 1: Student Travel Mode Share for AM Arrival Period</caption> <thead> <tr> <th>Mode</th> <th>Count</th> <th>Percentage</th> </tr> </thead> <tbody> <tr> <td>Private Vehicle</td> <td>268</td> <td>55%</td> </tr> <tr> <td>Walk Only</td> <td>113</td> <td>23%</td> </tr> <tr> <td>Bus</td> <td>62</td> <td>13%</td> </tr> <tr> <td>Cycle/Scooter</td> <td>43</td> <td>9%</td> </tr> </tbody> </table> <p>Figure 2: Student Travel Mode Share for PM Departure Period</p> <table border="1"> <caption>Data for Figure 2: Student Travel Mode Share for PM Departure Period</caption> <thead> <tr> <th>Mode</th> <th>Count</th> <th>Percentage</th> </tr> </thead> <tbody> <tr> <td>Private Vehicle</td> <td>229</td> <td>48%</td> </tr> <tr> <td>Walk Only</td> <td>121</td> <td>25%</td> </tr> <tr> <td>Bus</td> <td>79</td> <td>17%</td> </tr> <tr> <td>Cycle/Scooter</td> <td>47</td> <td>10%</td> </tr> </tbody> </table>	Mode	Count	Percentage	Private Vehicle	268	55%	Walk Only	113	23%	Bus	62	13%	Cycle/Scooter	43	9%	Mode	Count	Percentage	Private Vehicle	229	48%	Walk Only	121	25%	Bus	79	17%	Cycle/Scooter	47	10%
Mode	Count	Percentage																														
Private Vehicle	268	55%																														
Walk Only	113	23%																														
Bus	62	13%																														
Cycle/Scooter	43	9%																														
Mode	Count	Percentage																														
Private Vehicle	229	48%																														
Walk Only	121	25%																														
Bus	79	17%																														
Cycle/Scooter	47	10%																														
5	<p>Travel Access Guide: TfNSW appreciates Transport Access Guide (TAG) has been prepared to inform staff, students and visitors to the school of the travel choices available to them. Please note following to be included in the TAG (but not be limited to):</p> <ul style="list-style-type: none"> To promote more initiatives for staff in the TAG noting it is currently very student focused, please include information on car share, car-pooling, priority parking for people that car-pool or car-share and the TPC arranging this with staff. Please provide information about cycling, walking and public transport initiatives (that are currently accessible and safe) to encourage the use of sustainable transport journeys by staff and students. 	<p>Please refer to the Travel Access Guide (included in Appendix B of the School Transport Plan) that was updated and reviewed by SINSW for Term 1 2023. The TAG includes the requested information as noted in TfNSW commentary.</p>																														

Reference: SSD-9368-Mod-5 – Request for Advice – Galungara Public School

Item	TfNSW Commentary	Stantec Response
	<ul style="list-style-type: none"> • Provide promotion of EoT facilities, including any new cycling infrastructure available, and update number and location of bicycle parking and EoT facilities. • Provide information on car share, car-pooling and priority parking for people that car-pool and/or car-share. • The TAG should include information about public transport connectivity, EoT facilities, and local pedestrian and cycling connections. • Once future upgrades are developed, the TAG will need to be updated. 	
6	<p>Funding: While TfNSW appreciates that the Travel Plan Coordinator position will need to be funded, the STP requires a Travel Plan Coordinator to manage the STP, as part of the implementation of the STP.</p>	<p>SINSW has funded a School Travel Coordinator for Galungara Public School in advance of the school opening in January 2021. The role of the School Travel Coordinator is an ongoing commitment from SINSW through 2021 and 2022. Stantec Australia has been engaged by SINSW to continue this role until the end of December 2023. SINSW and the Department of Education would welcome for Transport for NSW to provide the funding for the extension of this role by an internal school resource or an external consultant in 2024 and beyond as the continued role for a School Travel Coordinator is important to encourage the next generation of students at Galungara Public School to adopt and maintain the sustainable transport modes.</p>
7	<p>Submission: The finalised STP will need to be submitted to TfNSW prior to occupancy. TfNSW requests an updated STP incorporating the above modifications, for review prior to determination of this application.</p>	<p>The School Transport Plan was modified in November 2022 to include the transport and access requirements for the school expansion with an Operational Transport and Access Management Plan (OTAMP) that included mitigation measures for safer walking routes to the school, such as a wombat crossing in Farmland Drive between Hyde Street and Glacier Street and a pedestrian refuge in Jerralong Drive west of Grima Drive. These improvements were approved by Blacktown City Council by the Council Traffic Committee on 22 November 2022 for installation before Term 1 2023. Attached in Appendix A is an extract from the Blacktown City Council minutes that provides the approval for these mitigation measures.</p>

Kind regards,

STANTEC AUSTRALIA PTY LTD



John Devney
 Senior Principal Transportation Planner
 Phone: 0459 943 332
 john.devney@stantec.com

Reference: SSD-9368-Mod-5 – Request for Advice – Galungara Public School

Appendix A Extract from Blacktown City Council Local Traffic Committee Meeting of 22 November 2022

2.3 Farmland Drive and Jerralong Drive, Schofields – pedestrian crossing devices at Galungara Public School

File: RD4555-04
(D22/575034 AM)

Topic As part of Galungara Public School pedestrian management, Stantec Consultants have submitted pedestrian crossing assessment reports and design plans for a proposed raised pedestrian crossing in Farmland Drive and a pedestrian refuge in Jerralong Drive, Schofields for Council approval.

Officer recommendation

1. The proposed raised pedestrian crossing and associated signs and line marking on Farmland Drive, Schofields be approved.
2. Flood lights be installed at the crossing as required by the Australian Standards.
3. The proposed pedestrian refuge island and associated signs and line marking on Jerralong Drive, Schofields be approved.
4. Flood lights be installed at the pedestrian refuge as required by the Australian Standards.
5. Stantec Consultants be advised of Council's decision.

Committee recommendation

1. The proposed raised pedestrian crossing and associated signs and line marking on Farmland Drive, Schofields be approved, subject to:
 - the transverse lines for the pedestrian crossing need to be marked from the kerb lines, as although the splitter island is provided, the crossing will still commence from the kerb lines
 - the applicant confirming that the proposed length of the refuge island is a minimum of 6 metres long
2. Flood lights to be installed at the crossing as required by the Australian Standards.
3. The proposed pedestrian refuge island and associated signs and line marking on Jerralong Drive, Schofields be approved.
4. Lighting to be installed at the pedestrian refuge as required by the Australian Standards.
5. Stantec Consultants be advised of Council's decision.

Key reasons

- a. Galungara Public School is a primary school in Schofields that opened for 250-300 students from years K-6 in Term 1 (January) of 2021. For Term 3 of 2022, up to 546 students are enrolled at the school. The Stage 2 modifications to expand the school with additional classrooms and facilities are under construction, and the expansion works will cater for up to

1,000 students and 70 full-time staff. This upgrade will include additional fit for-purpose learning spaces to support the growing population in the North West Growth Area. Improvements to provide safer walk routes to the school entrances, in particular from the residential development located west and north of the school and across Farmland Drive to the entrance of the school, have been assessed.

- b. As part of Galungara Public School pedestrian management, Stantec Consultants have submitted pedestrian crossing assessment reports and design plans for Farmland Drive and Jerralong Drive for a proposed raised pedestrian crossing in Farmland Drive and a pedestrian refuge in Jerralong Drive, Schofields for Council approval.

- c. Farmland Drive, Schofields

To investigate the pedestrian crossing demand on Farmland Drive near Galungara Public School, pedestrian and vehicle counts have been undertaken during, before and after school hours.

The results of pedestrian and vehicular counts are listed in the table below:

Time	Vehicles (V)	Pedestrian (P)			Reduced Warrants met
		School Children	Other	Total	
8am-9am	114	137	168	305	No
3pm-4pm	24	24	61	85	No

The results of the counts show the number of pedestrians crossing Farmland Drive and vehicles travelling along Farmland Drive near Galungara Public School, do not meet the TfNSW reduced warrants for installation of a marked pedestrian crossing.

However, there is no existing pedestrian crossing device on Farmland Drive at the main access of Galungara Public School. The proposed Pelican Road extension that connects with Farmland Drive is not operational in the current conditions. Once it is operational, Farmland Drive is expected to have higher traffic volumes in peak hours and expected to have minimum traffic flow during peak hours to meet the TfNSW reduced warrants for a marked pedestrian crossing.

- d. Stantec Consultants have consulted the affected property owners/residents about the proposed pedestrian crossing and the majority of the respondents are supportive of the proposal.
- e. Therefore, it is recommended to install a raised pedestrian crossing on the Farmland Drive, Schofields to ensure safe crossing for students and their carers to access the school site.
- f. Jerralong Drive, Schofields

Improvements to provide safer walk routes to the school entrances, in particular from the residential development located south of the school and across Jerralong Drive to the entrance of the school, have also been assessed by Stantec Consultants. To assess the

pedestrian crossing demand on Jerralong Drive near Grima Street, pedestrian and vehicle counts have been undertaken during, before and after school hours.

The results of pedestrian and vehicular counts do not meet the TfNSW reduced warrants for installation of a marked pedestrian crossing on Jerralong Drive.

Therefore, it is recommended to install a pedestrian refuge on Jerralong Drive at Grima Street, to provide safer walk routes to the school entrances.

- g. Stantec Consultants have consulted the affected property owners/residents about the proposed pedestrian refuge island and the majority of the respondents to the consultation are supportive of the proposal.
- h. Therefore, it is recommended to install a pedestrian refuge on Jerralong Drive, Schofields at Grima Street to ensure a safe crossing point for pedestrians to access the school site.

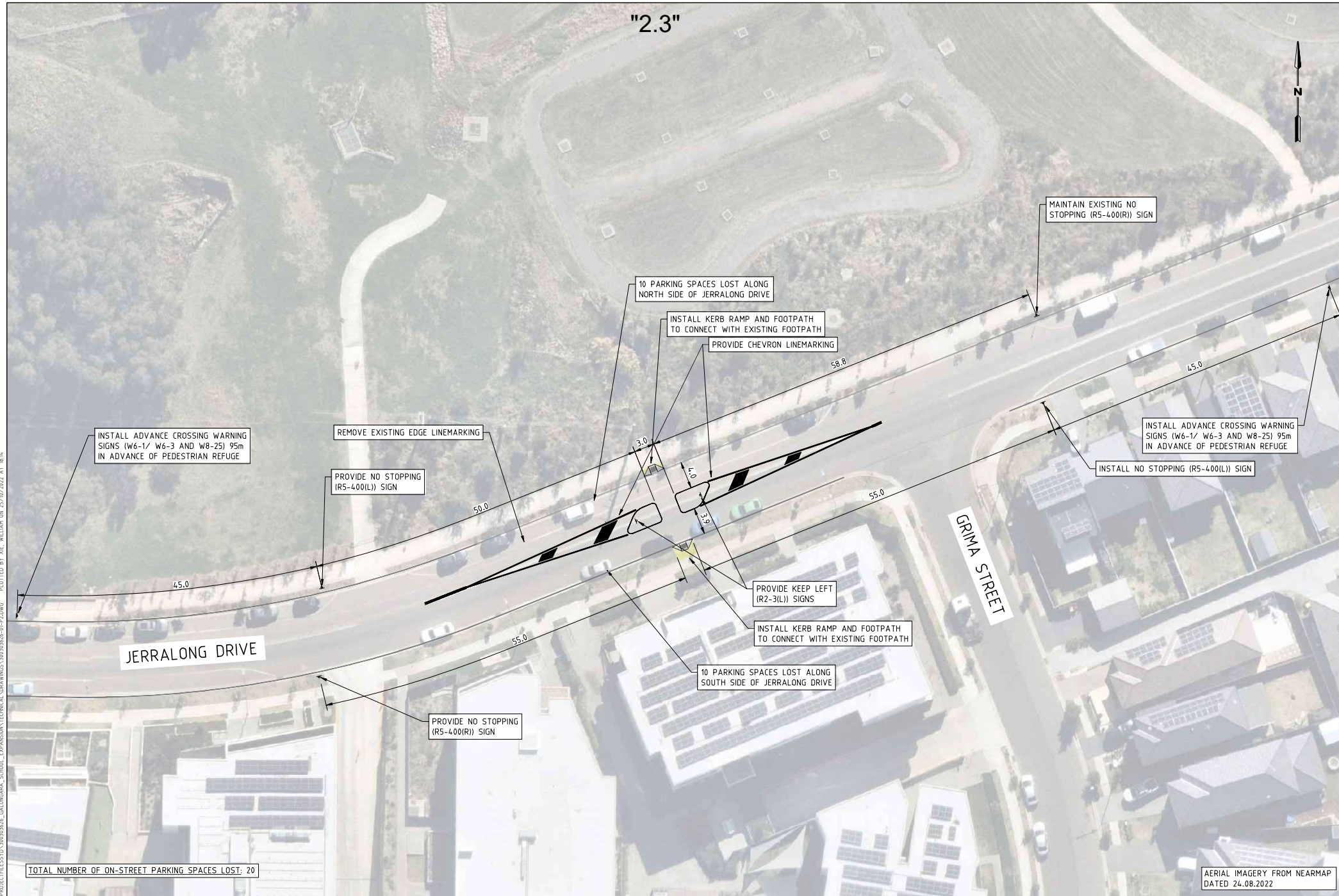
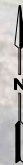
Discussion

Ms Hanna advised that in relation to the proposed raised pedestrian crossing on Farmland Drive, the transverse lines for the pedestrian crossing needs to be marked from the kerb lines as although the splitter island is provided, the crossing will still commence from the kerb lines.

Ms Hanna also noted that in relation to the proposed refuge island on Jerralong Drive, Schofields, it is not clear what the proposed length is of the refuge islands but the length of the refuge islands needs to be 6m minimum.

Support for Recommendation – Unanimous

"2.3"



\\CORP-ADS-01\DATA\PROJECTS\300303626-GALUNGARA_SCHOOL_EXPANSION\TECHNICAL\DRAWINGS\300303626-PP-P2.DWG PLOTTED BY XIE, WILLIAM ON 25/10/2022 AT 18:14



PRELIMINARY PLAN
FOR PROPOSED PURPOSES ONLY
SUBJECT TO CHANGE WITHOUT
NOTICE

WARNING
BEWARE OF UNDERGROUND SERVICES
THE LOCATIONS OF UNDERGROUND SERVICES ARE
APPROXIMATE ONLY AND THEIR EXACT POSITION
SHOULD BE PROVIDED ON SITE. NO GUARANTEE IS
GIVEN THAT ALL BURIED SERVICES ARE SHOWN.

DESIGNED
W.XIE

APPROVED BY
B.MAYNARD

DESIGN CHECK
B.MAYNARD

DATE ISSUED
25 OCTOBER 2022

SCALE
A3 0 0.5 1 1.500

CAD FILE NO.
300303626-01-P2.DWG

GALUNGARA PUBLIC SCHOOL
JERRALONG DRIVE, SCHOFIELDS NSW 2762

CONCEPT PEDESTRIAN REFUGE LAYOUT

DRAWING NO. 300303626-01-01 SHEET 01 OF 02 ISSUE P2

AERIAL IMAGERY FROM NEARMAP
DATED 24.08.2022

Navdeep Shergill Singh
RE: SSD-9368-MOD-5
Department of Planning and Environment
Locked Bag 5022
Parramatta NSW 2124

Attn: Navdeep Shergill Singh

Alex Avenue Public School Modification 5 - Staging
34-38 Schofields Road
Schofields

5 December 2022

Dear Navdeep Shergill Singh,

Transport for NSW (TfNSW) is in receipt of the Department's correspondence dated 25 November 2022, providing opportunity for TfNSW to review the aforementioned proposal.

TfNSW has reviewed the relevant information and requests information as per **Attachment A** to assist further assessment of this proposal, please.

Should you have any questions relevant to the subject proposal, please contact Shoba Sivasubramaniam at 0431 446 623 or via development.sydney@transport.nsw.gov.au

Sincerely,



Muriel Maher
Senior Coordinator Land Use
Planning and Programs
Greater Sydney Division

Attachment A

School Travel Plan

TfNSW appreciates the School Travel Plan (STP) as provided and provides the following commentary in turn, requiring resubmission of the STP:

- 1. Implementation Plan:** TfNSW acknowledges the STP has an Action Plan, and recommends this be re-named to an Implementation Plan and should include all of the initiatives and incentives within the STP, timing and completion dates to ensure the overall effectiveness of the STP. Each part of the Implementation Plan should be managed overall by a Travel Plan Coordinator/Steering Committee, as in previous meetings for this site, it was acknowledged the Principal was very busy. The Travel Plan Coordinator (TPC) should have the Principal approve all of the initiatives but ultimately the TPC should be implementing all of the initiatives. The Implementation Plan should:
 - Identify the party or parties responsible for delivery and implementation of each element of the updated STP throughout various stages of the development lifecycle, including for its ongoing implementation, monitoring and review, for a period of at least 5 years post occupation certificate;
 - Be updated both on an annual basis, and when future transport services are upgraded; and
 - Be updated with tasks that are complete - there are still some tasks that have been put into the Plan that should be marked as complete for the opening.
- 2. Car Parking:** Please advise when the temporary park on school grounds (of 31 car park spaces) will be repurposed / closed. TfNSW still recommends reducing the amount of carparking proposed using the council car park (80 car parking spaces for a staff of 70, plus 1000 students by 2025) as this will further encourage car driving as a preference. Sustainable transport modes should be encouraged, consistent with the Future Transport Strategy in which Travel Demand Management (TDM) is one of TfNSW key actions.
- 3. Parking Management Strategy:** Please incorporate a parking management strategy in the STP (into the Implementation Plan), that prioritises use by staff on a needs basis, eg. preference for parking for staff that are car-pooling or car sharing.
- 4. Bicycle Parking and End of Trip (EoT):** A good supply of quality EoT and bicycle parking will encourage walking and cycling mode shares. TfNSW appreciates that 56 covered bicycle spaces are available but would encourage these spaces to be increased to accommodate increased staffing and student numbers (70 staff and 1000 students by 2025). Also, please advise how many EoT facilities are planned for staff and students, including showers, lockers and change rooms. TfNSW recommends that this bicycle parking and any EoT should be monitored over time to ensure sufficient supply to encourage active transport both to/from the site, for staff. The bicycle parking should be located at convenient locations within the development site, be safe, secured and under cover. Some further guidance on bicycle parking and end of trip facilities is available via: [cycleway design toolkit](#).

5. **Travel Access Guide:** TfNSW appreciates Transport Access Guide (TAG) has been prepared to inform staff, students and visitors to the school of the travel choices available to them. Please note following to be included in the TAG (but not be limited to):
 - To promote more initiatives for staff in the TAG noting it is currently very student focused, please include information on car share, car-pooling, priority parking for people that car-pool or car-share and the TPC arranging this with staff.
 - Please provide information about cycling, walking and public transport initiatives (that are currently accessible and safe) to encourage the use of sustainable transport journeys by staff and students.
 - Provide promotion of EoT facilities, including any new cycling infrastructure available, and update number and location of bicycle parking and EoT facilities.
 - Provide information on car share, car-pooling and priority parking for people that car-pool and/or car-share.
 - The TAG should include information about public transport connectivity, EoT facilities, and local pedestrian and cycling connections.
 - Once future upgrades are developed, the TAG will need to be updated.
6. **Funding:** While TfNSW appreciates that the Travel Plan Coordinator position will need to be funded, the STP requires a Travel Plan Coordinator to manage the STP, as part of the implementation of the STP.
7. **Submission:** The finalised STP will need to be submitted to TfNSW prior to occupancy. TfNSW requests an updated STP incorporating the above modifications, for review prior to determination of this application.