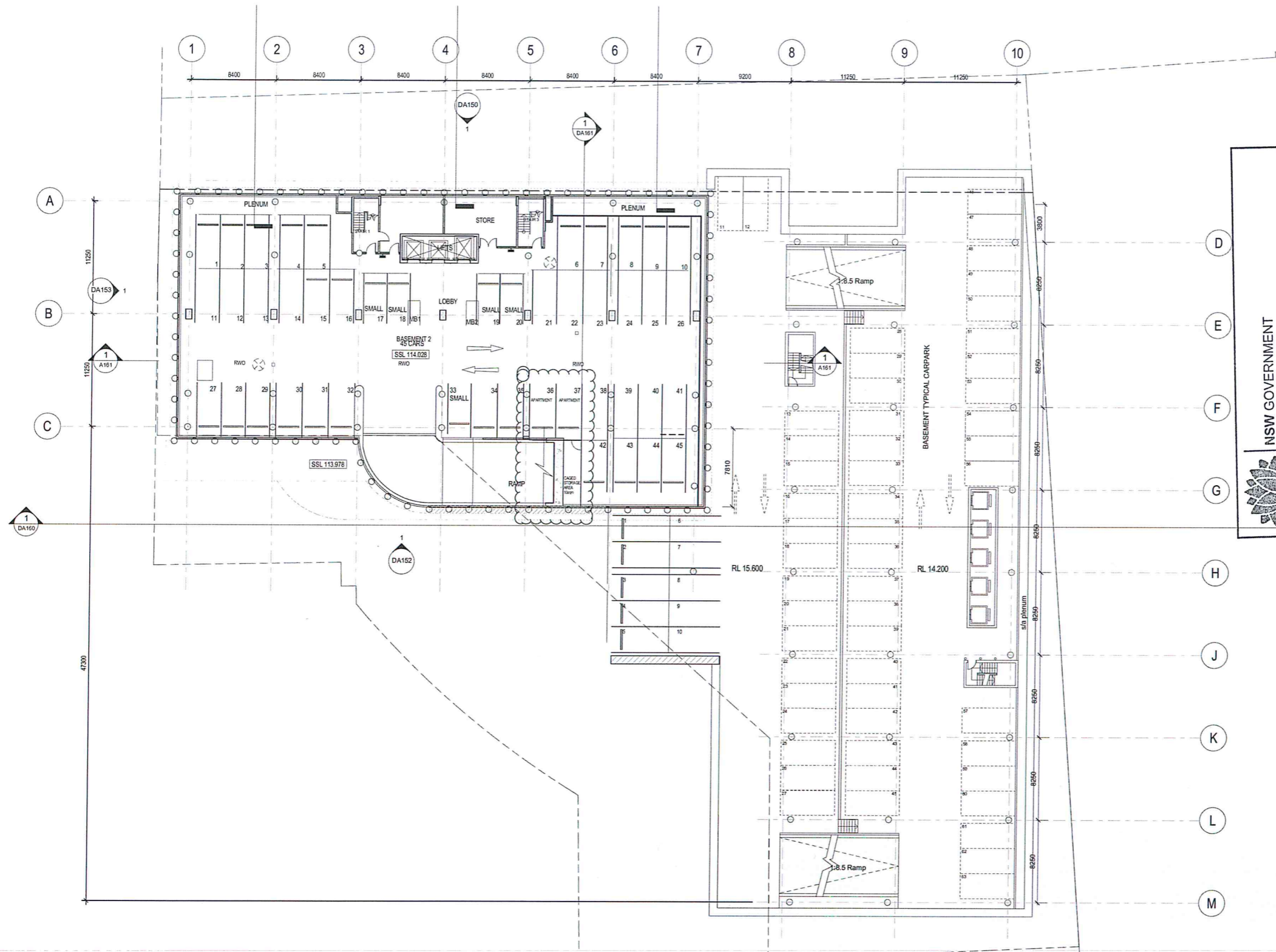


ISSUE	AMENDMENT	DATE
A	PRELIMINARY ISSUE	04/10/12
B	ISSUE FOR TSW SUBMISSION	12/10/12
C	ISSUE FOR TSW SUBMISSION	14/01/13



NSW GOVERNMENT
 Planning

Issued under the Environmental Planning and Assessment Act 1979

Approved Application No. **MP 06-0273.M005**

granted on the **2/12/2013**

Signed: *[Signature]*

Sheet No. **1** of

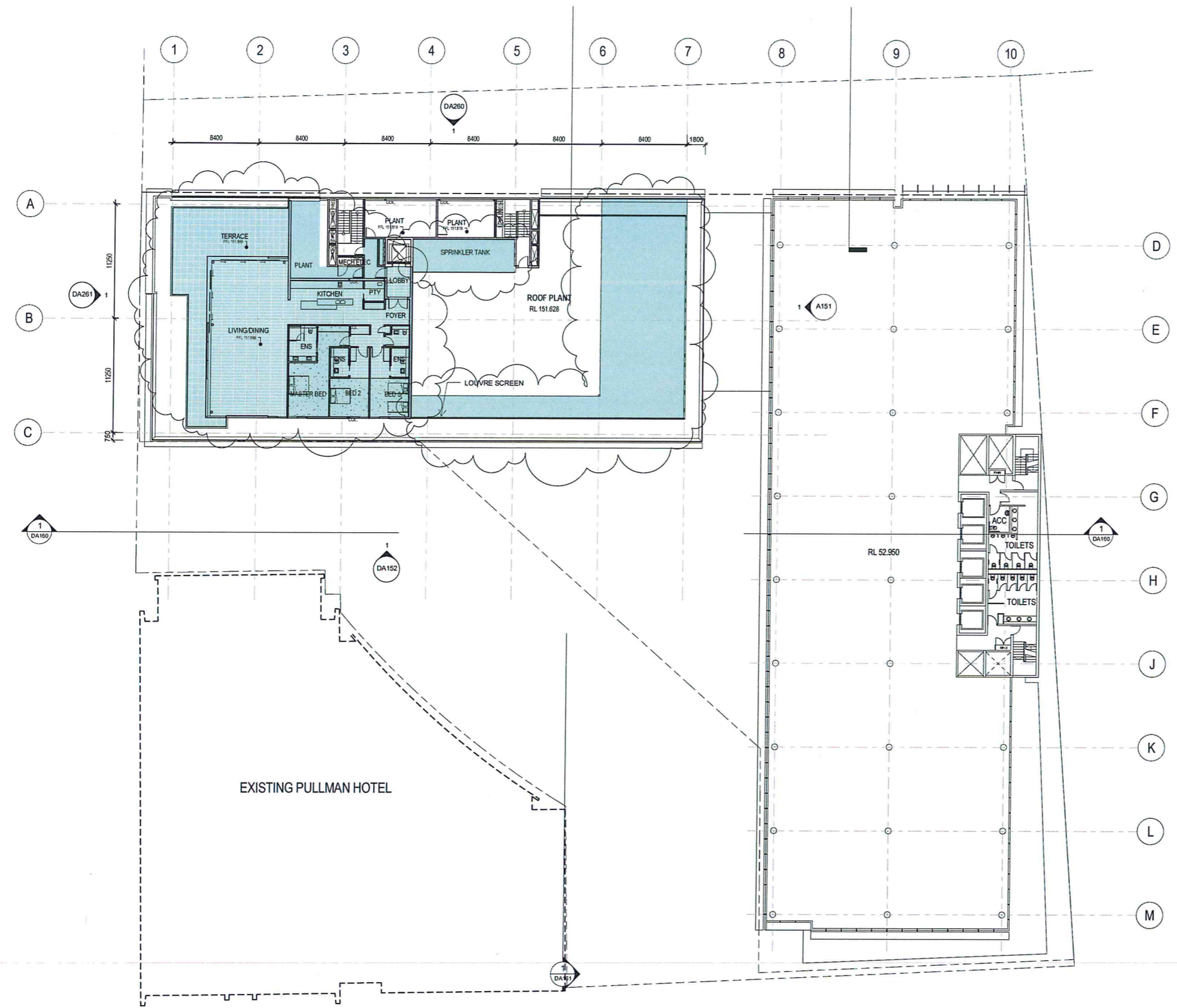
1 BASEMENT 2
 Scale: 1:200

PARKING SCHEDULE

LEVEL	NORTH BUILDING	SOUTH BUILDING
B1 MEZZANINE	-	38
B1	31	34
B2	45	63
B3	-	63
SUBTOTAL	76	198
TOTAL CARS - 274		

THE AVENUE, SITE 4B
 10 HERB ELLIOT AVE
 SYDNEY OLYMPIC PARK
 BASEMENT B2 PLAN

ISSUE	AMENDMENT	DATE
A	PRELIMINARY ISSUE	04/10/12
B	ISSUE FOR 75W SUBMISSION	12/10/12
C	ISSUE FOR 75W SUBMISSION	14/01/13
D	75W SUBMISSION	27/05/13
E	ISSUE FOR INFORMATION	26/07/13
F	ISSUE FOR INFORMATION	02/08/13
G	ISSUE FOR 75W SUBMISSION	14/09/13



NSW GOVERNMENT
 Planning

Issued under the Environmental Planning and Assessment Act 1979

Approved Application No. **MP 26-2273 MODS**

granted on the **2/12/2013**

Signed **[Signature]**

Sheet No. **2** of **7**

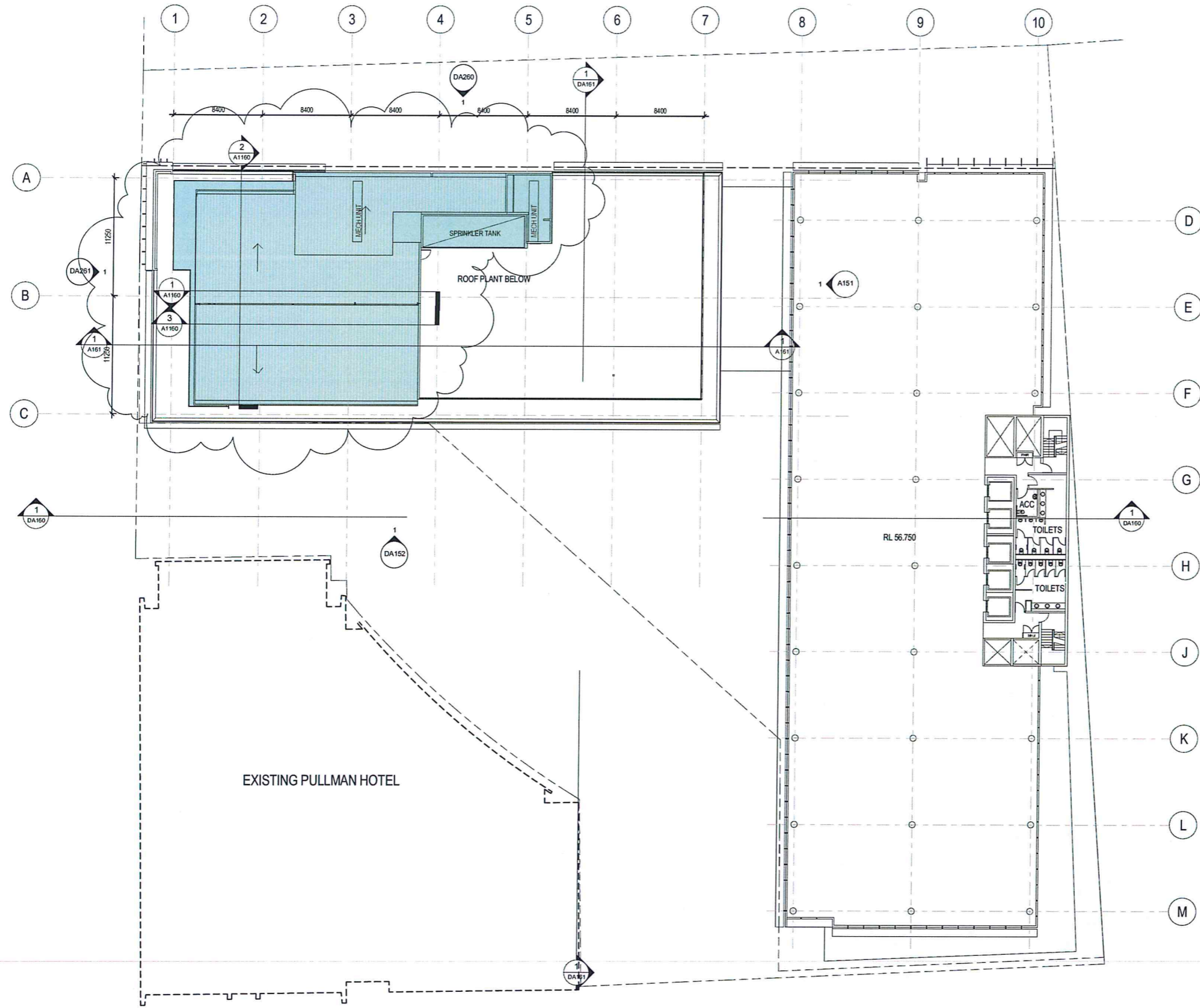
GFA SCHEDULE

LEVEL	GFA NORTH BUILDING (sqm)	GFA SOUTH BUILDING
GROUND FLOOR	600	1130
FIRST FLOOR	1142	1338
SECOND FLOOR	1314	1825
THIRD FLOOR	1314	1825
FOURTH FLOOR	1295	1825
FIFTH FLOOR	1314	1825
SIXTH FLOOR	1247	1704
SEVENTH FLOOR	1247	1721
EIGHTH FLOOR	-	1721
NINTH FLOOR	-	1721
TOTAL	9474	16625

1 EIGHTH FLOOR PLAN
 A150 Scale: 1:200



ISSUE	AMENDMENT	DATE
A	PRELIMINARY ISSUE	04/10/12
B	ISSUE FOR 75W SUBMISSION	12/10/12
C	ISSUE FOR 75W SUBMISSION	14/01/13
D	75W SUBMISSION	27/09/13
E	ISSUE FOR INFORMATION	26/07/13
F	ISSUE FOR INFORMATION	02/08/13
G	ISSUE FOR 75W SUBMISSION	14/08/13



NSW GOVERNMENT
 Planning

Issued under the Environmental Planning and Assessment Act 1979

Approved Application No. *MP 06 0213 0007*

granted on the *2/12/2013*

Signed *[Signature]*

Sheet No. *3* of *7*

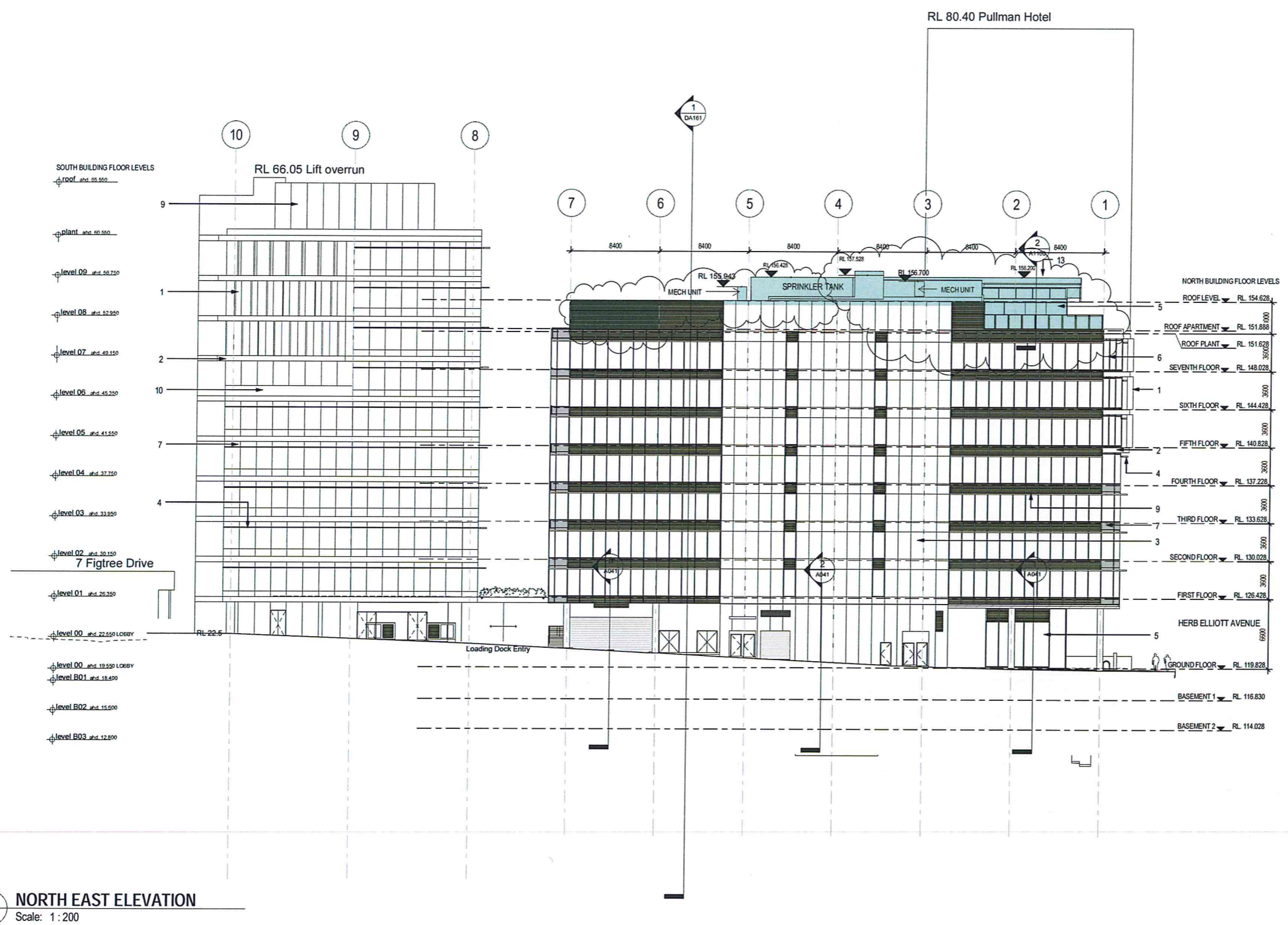
GFA SCHEDULE

LEVEL	GFA NORTH BUILDING (sqm)	GFA SOUTH BUILDING
GROUND FLOOR	600	1130
FIRST FLOOR	1142	1358
SECOND FLOOR	1314	1825
THIRD FLOOR	1314	1825
FOURTH FLOOR	1296	1825
FIFTH FLOOR	1314	1825
SIXTH FLOOR	1247	1794
SEVENTH FLOOR	1247	1721
EIGHTH FLOOR	-	1721
NINTH FLOOR	-	1721
TOTAL	9474	16625

1 NINTH FLOOR PLAN
 Scale: 1:200



ISSUE	AMENDMENT	DATE
A	PRELIMINARY ISSUE	04/10/12
B	ISSUE FOR 75W SUBMISSION	12/10/12
C	RE-ISSUE FOR 75W SUBMISSION	23/11/12
D	ISSUE FOR 75W SUBMISSION	14/01/13
E	75W SUBMISSION	27/05/13
F	ISSUE FOR INFORMATION	29/07/13
G	ISSUE FOR INFORMATION	02/09/13
H	ISSUE FOR 75W SUBMISSION	14/09/13



1 NORTH EAST ELEVATION
 Scale: 1 : 200

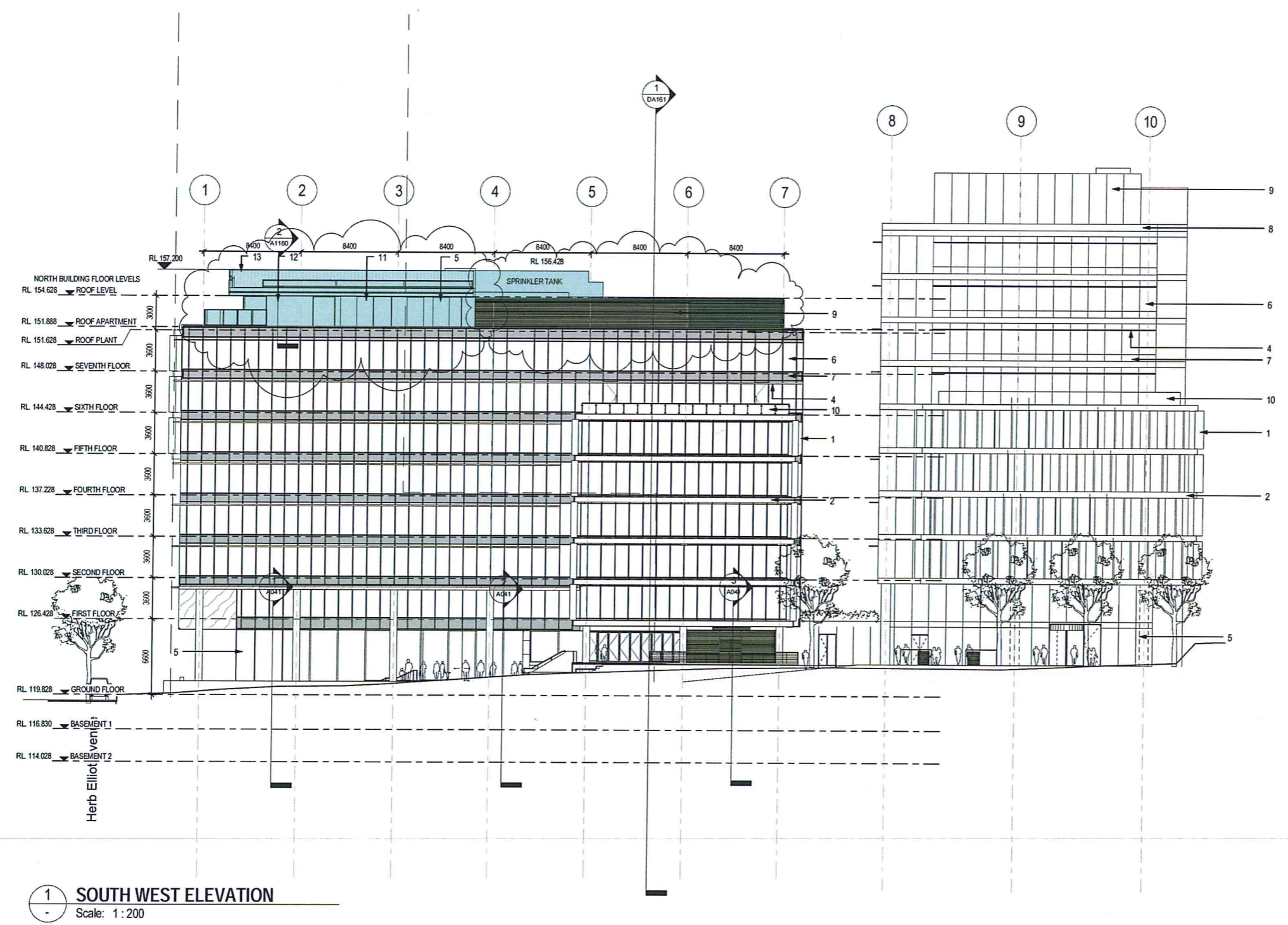
NSW GOVERNMENT
 Planning
 Issued under the Environmental Planning and Assessment Act 1979
 Approved Application No. **MP 06_0273 MMS**
 granted on the **2/12/2013**
 Signed **[Signature]**
 Sheet No. **4** of **7**

- EXTERNAL FINISHES LEGEND**
1. VERTICAL TIMBER (OR SIMILAR) LOUVER
 2. CONCRETE (OR SIMILAR) SLAB EDGE
 3. CONCRETE (OR SIMILAR) GLAZING
 4. HORIZONTAL ANODISED ALUMINIUM SUN SHADE
 5. ALUMINIUM FRAMES CLEAR GLASS SHOPFRONT GLAZING
 6. DOUBLE GLAZED UNIT, COLOUR CRYSTAL GREY (OR SIMILAR)
 7. GLASS SPANDREL WITH DARK ALUMINIUM BACK PANEL
 8. ANODISED ALUMINIUM CLADDING TO PARAPET
 9. POWDERCOATED ALUMINIUM LOUVER
 10. GLAZED BALUSTRADE
 11. METAL FACADE GLAZING
 12. REINFORCED CONCRETE WALL
 13. METAL ROOF SHEETING

THE AVENUE, SITE 4B
 10 HERB ELLIOT AVE
 SYDNEY OLYMPIC PARK
 NORTH EAST ELEVATION



ISSUE	AMENDMENT	DATE
A	PRELIMINARY ISSUE	04/10/12
B	ISSUE FOR 75W SUBMISSION	12/10/12
C	RE-ISSUE FOR 75W SUBMISSION	23/11/12
D	ISSUE FOR 75W SUBMISSION	14/01/13
E	75W SUBMISSION	27/05/13
F	ISSUE FOR INFORMATION	25/07/13
G	ISSUE FOR INFORMATION	02/09/13
H	ISSUE FOR 75W SUBMISSION	14/08/13



1 SOUTH WEST ELEVATION
 Scale: 1:200

NSW GOVERNMENT
 Planning
 Issued under the Environmental Planning and Assessment Act 1979

Approved Application No. **MP 06 0273 MOPS**
 granted on the **2/12/2013**
 Signed: **[Signature]**
 Sheet No. **5** of **5**

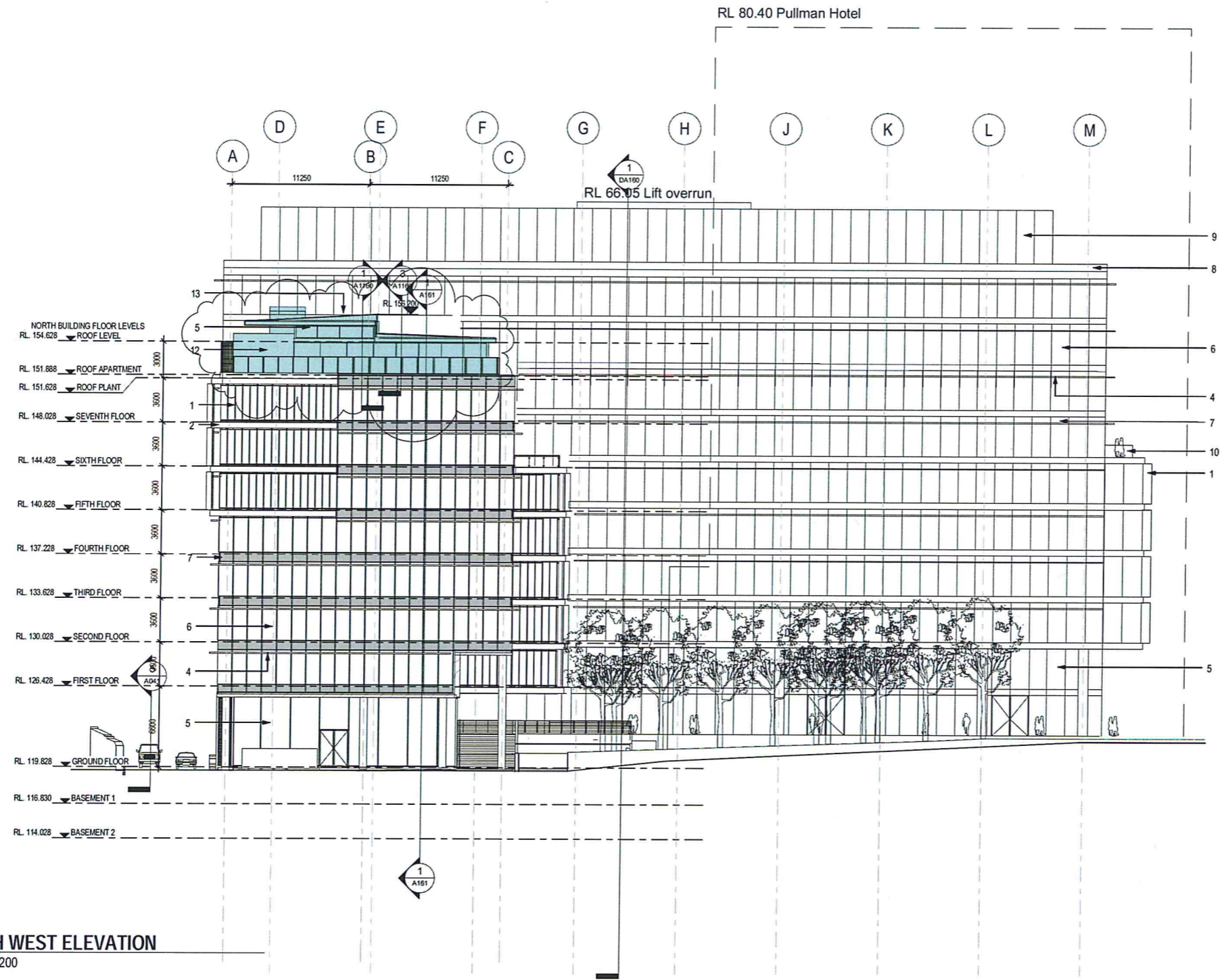
- level 05 and 41.550
- level 04 and 37.750
- level 03 and 33.950
- level 02 and 30.150
- level 01 and 26.350
- level 00 and 22.550 LOBBY
- level B01A and 18.800
- level B01 and 18.800
- level B02 and 15.000
- level B02A and 14.200
- level B03 and 12.800

- EXTERNAL FINISHES LEGEND
1. VERTICAL TIMBER (OR SIMILAR) LOUVER
 2. CONCRETE (OR SIMILAR) EDGE
 3. CONCRETE (OR SIMILAR) CLADDING
 4. HORIZONTAL ANODISED ALUMINIUM SUN SHADE
 5. ALUMINIUM FRAMES CLEAR GLASS SHORFPONT GLAZING
 6. DOUBLE GLAZED UNIT, COLOUR CRYSTAL GREY (OR SIMILAR)
 7. GLASS SPANDREL WITH DARK ALUMINIUM BACK PANEL
 8. ANODISED ALUMINIUM CLADDING TO PARAPET
 9. POWDERCOATED ALUMINIUM LOUVER
 10. GLAZED BALUSTRADE
 11. METAL FACADE CLADDING
 12. REINFORCED CONCRETE WALL
 13. METAL ROOF SHEETING

THE AVENUE, SITE 4B
 10 HERB ELLIOT AVE
 SYDNEY OLYMPIC PARK
 SOUTH WEST ELEVATION



ISSUE	AMENDMENT	DATE
A	PRELIMINARY ISSUE	04/10/12
B	ISSUE FOR 75W SUBMISSION	12/10/12
C	RE-ISSUE FOR 75W SUBMISSION	23/11/12
D	ISSUE FOR 75W SUBMISSION	14/01/13
E	75W SUBMISSION	27/05/13
F	ISSUE FOR INFORMATION	26/07/13
G	ISSUE FOR INFORMATION	02/09/13
H	ISSUE FOR 75W SUBMISSION	14/08/13



1 NORTH WEST ELEVATION
 A045 Scale: 1:200

NSW GOVERNMENT
 Planning

Issued under the Environmental Planning and Assessment Act 1979

Approved Application No. **MP 01-02-73 mod**
 granted on the **21/2/2015**

Signed: *[Signature]*
 Sheet No. **6** of

Level	Height (m)
level B03	11.400
level B02A	14.200
level B02	15.600
level B01A	17.000
level B01M	19.800
level B01	19.800
level 00	22.550 LOBBY
level 00	22.550 LOBBY
level 01	26.350
level 02	30.150

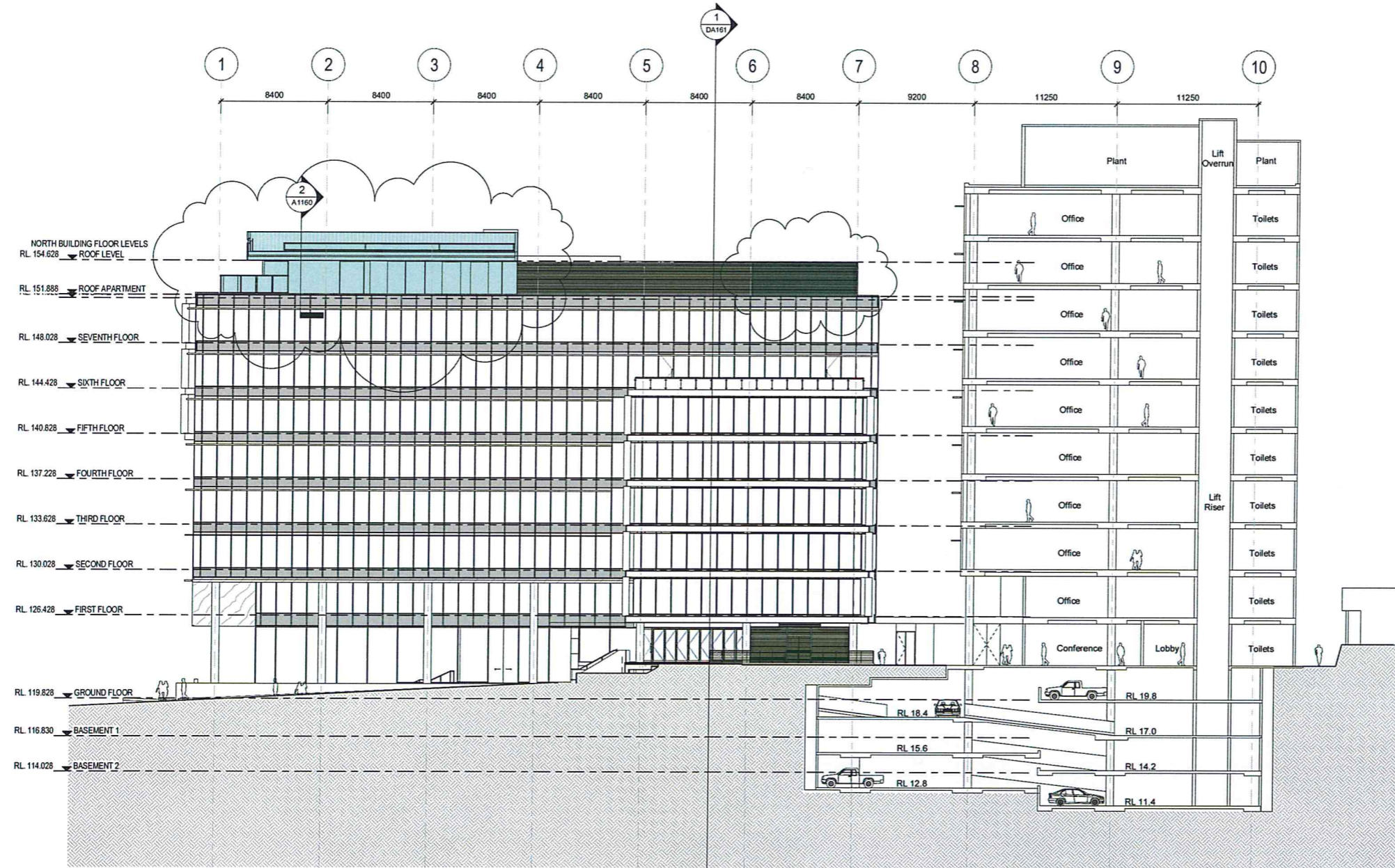
- EXTERNAL FINISHES LEGEND**
- VERTICAL TIMBER (OR SIMILAR) LOUVRE
 - CONCRETE (OR SIMILAR) EDGE
 - CONCRETE (OR SIMILAR) CLADDING
 - HORIZONTAL ANODISED ALUMINIUM SUN SHADE
 - ALUMINIUM FRAMES CLEAR GLASS SHORFPONT GLAZING
 - DOUBLE GLAZED UNIT, COLOUR CRYSTAL GREY (OR SIMILAR)
 - GLASS SPANDREL WITH DARK ALUMINIUM BACK PANEL
 - ANODISED ALUMINIUM CLADDING TO PARAPET
 - POWDERCOATED ALUMINIUM LOUVRE
 - GLAZED BALUSTRADE
 - METAL FACADE CLADDING
 - REINFORCED CONCRETE WALL
 - METAL ROOF SHEETING

THE AVENUE, SITE 4B
 10 HERB ELLIOT AVE
 SYDNEY OLYMPIC PARK
 NORTH WEST ELEVATION





ISSUE	AMENDMENT	DATE
A	PRELIMINARY ISSUE	04/10/12
B	ISSUE FOR 75W SUBMISSION	12/10/12
C	RE-ISSUE FOR 75W SUBMISSION	23/11/12
D	ISSUE FOR 75W SUBMISSION	14/01/13
E	75W SUBMISSION	27/05/13
F	ISSUE FOR INFORMATION	26/07/13
G	ISSUE FOR INFORMATION	02/08/13
H	ISSUE FOR 75W SUBMISSION	14/08/13



NSW GOVERNMENT
 Planning
 Issued under the Environmental Planning and Assessment Act 1979
 Approved Application No. **W P 06-0273 m003**
 granted on the **2/12/2013**
 Signed **[Signature]**
 Sheet No. **7** of **7**

1 SECTION A-A
 A040 Scale: 1:200