

**Aspect Industrial Estate, Mamre Rd, Kemps Creek**  
**Landscape Masterplan MOD3**  
**December 2022**



# Contents Page

- Introduction
- Landscape Concept Masterplan
- Entry Landscape
- Typical Lot Frontage
- Mamre Road Frontage
- Mamre Road Frontage Planting
- Estate Roads
- Primary Access Road
- Secondary Roads
- Boundaries
- Boundary Planting
- Stormwater Basin
- Riparian Zone
- Riparian Zone Pathway and Nodes
- Riparian Zone Planting

# Introduction

The landscape concept masterplan demonstrates the vision for the **Aspect Industrial Estate**.

This Masterplan report is to be read with the following landscape documentation as well as civil, architectural and ecological reports.

This report and the following documents have been prepared to respond to SEARS condition for detailed landscape plans.

*‘Detailed landscaping plans’*


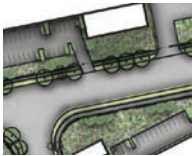


WH9_000	Lot 9 Landscape Coversheet
WH9_101	Lot 9 Landscape Plan
WH9_102	Lot 9 Landscape Plan
WH9_103	Lot 9 Landscape Plan
WH9_104	Lot 9 Landscape Plan
WH9_105	Lot 9 Landscape Plan
WH9_106	Lot 9 Landscape Plan
WH9_107	Lot 9 Landscape Plan
WH9_108	Lot 9 Landscape Plan
WH9_109	Lot 9 Landscape Plan
WH9_501	Landscape Details
WH9_502	Landscape Details





# Landscape Concept Masterplan

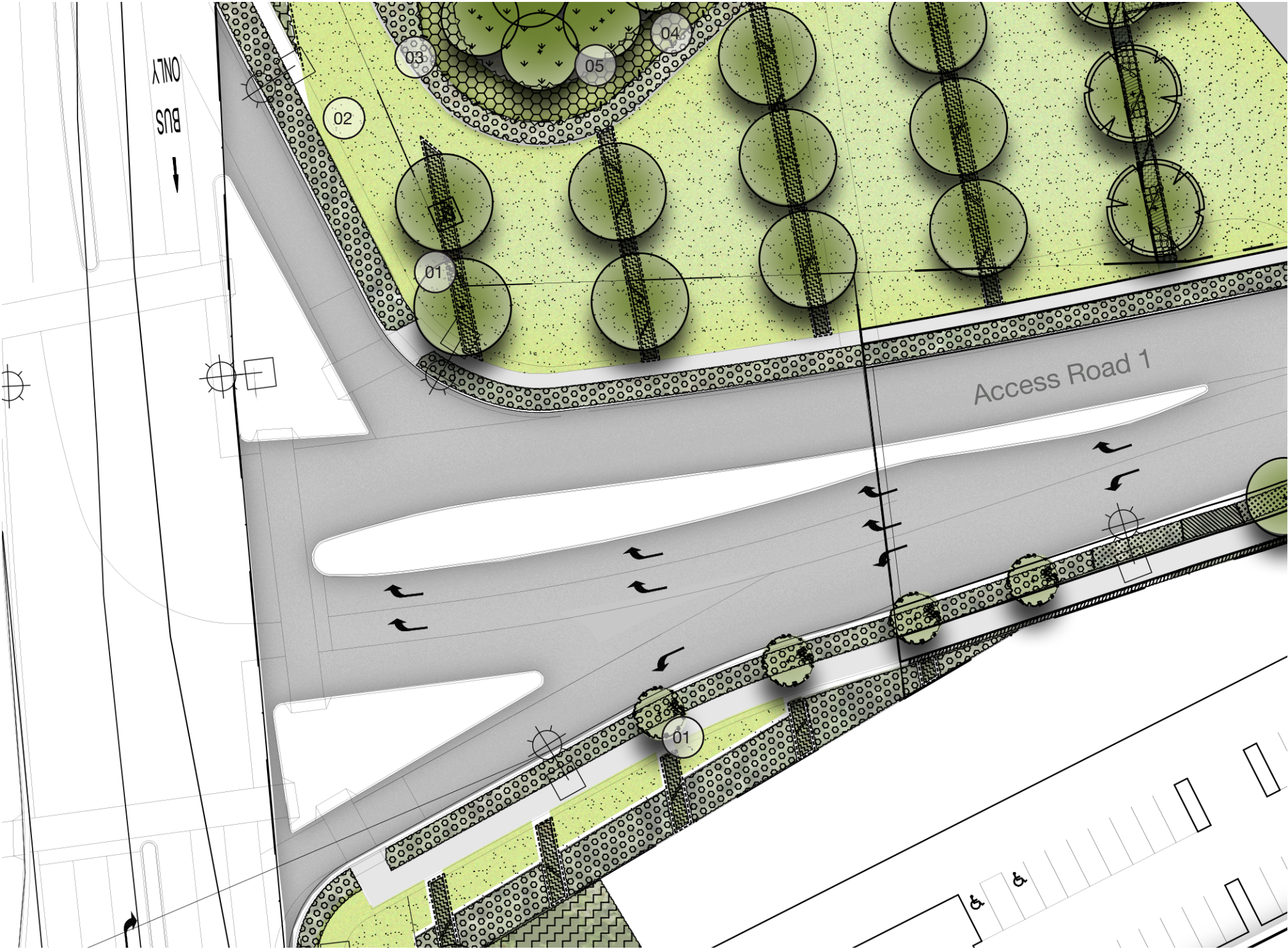
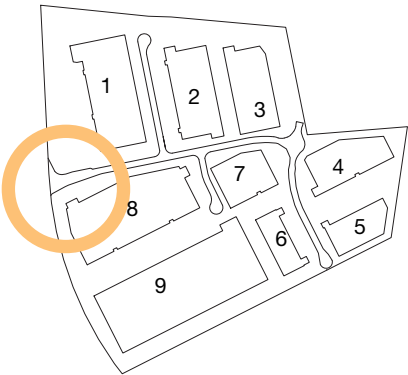


-  Estate Entry Feature
-  Streetscape
-  Riparian Zone
-  Stormwater Basin
-  Boundary Planting
-  On Lot Landscape



# Entry Landscape

The entry landscape located to the northern side of the Mamre Road entry provides a landscape arrival feature. A open lawn area with a series of banding of grasses and concrete inlays frames the entry road and provides a framework for future amenity in this area. The adjacent stormwater basin's planting will be visible for this area. Connecting the Entry feature to Lot 1 is a carpark with feature unit paving to encourage permeability of pedestrians between the building, carpark and broader landscape.



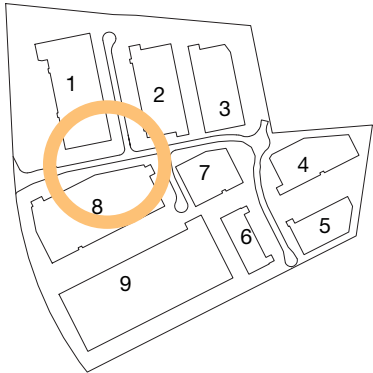
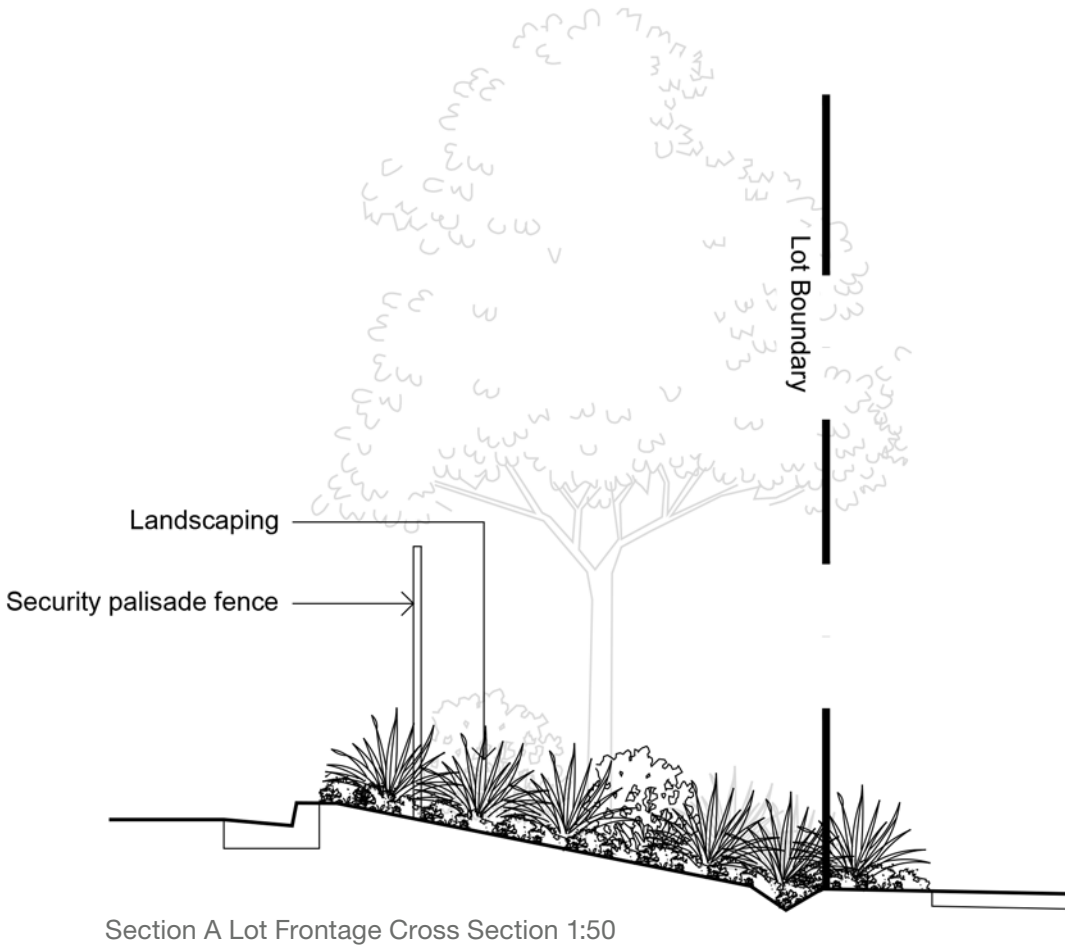
- 01 Feature blade walls
- 02 Entry massed grasses and groundcover planting
- 03 Massed Grasses to stormwater basin perimeter
- 04 Stormwater maintenance pathway
- 05 Fence to stormwater basin



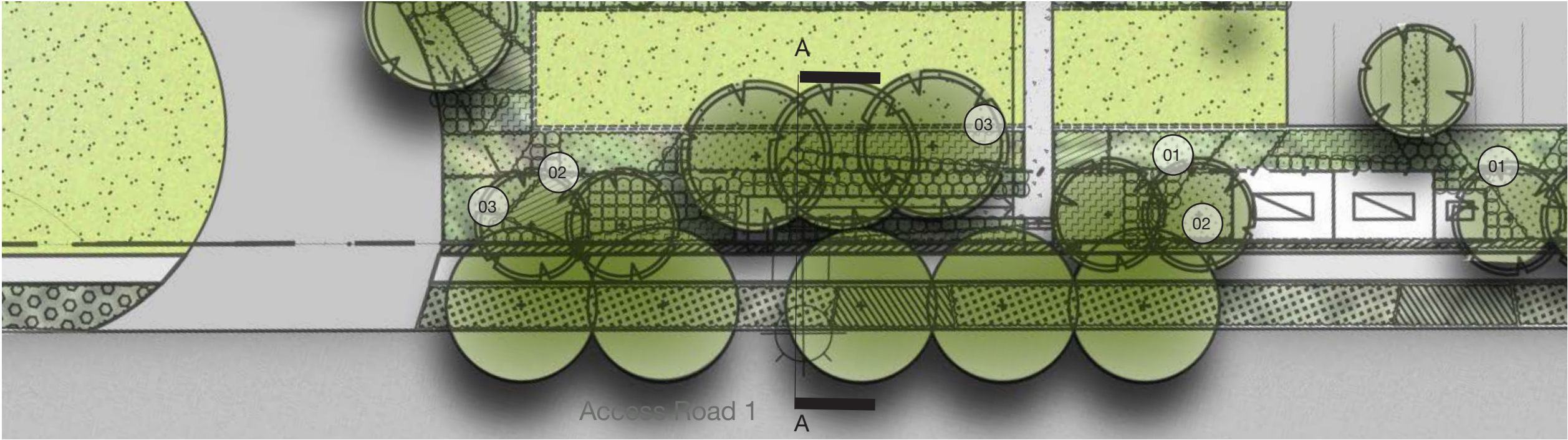


# Typical Lot Frontage

The lot frontages are the main presentational frontage of lots to the estate road. Planting to the frontages will consist of a variety of native and exotic, shrubs, groundcovers and small-medium trees. Security fencing is to be positioned amongst the landscape to recede into planting.



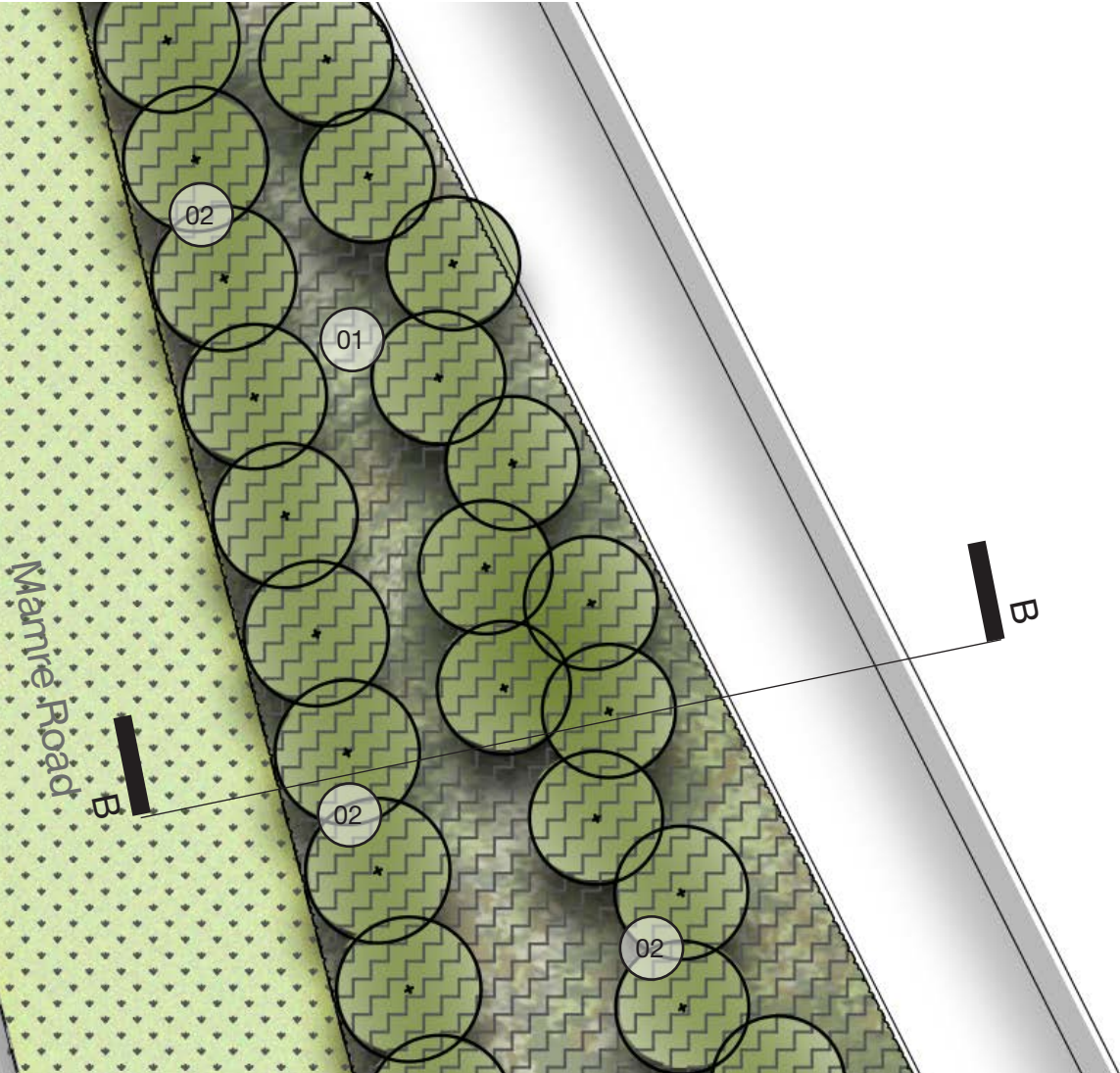
- 01 Planting in blocks
- 02 Massed low grasses and groundcovers
- 03 Boundary tree planting



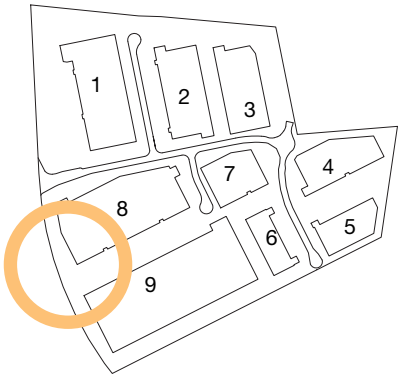


# Mamre Road Frontage

The Mamre Road frontage consists of embankments sloping from lots down the road, Massed planting of shrubs, grasses and groundcovers is proposed with large canopy trees.



Lot 8



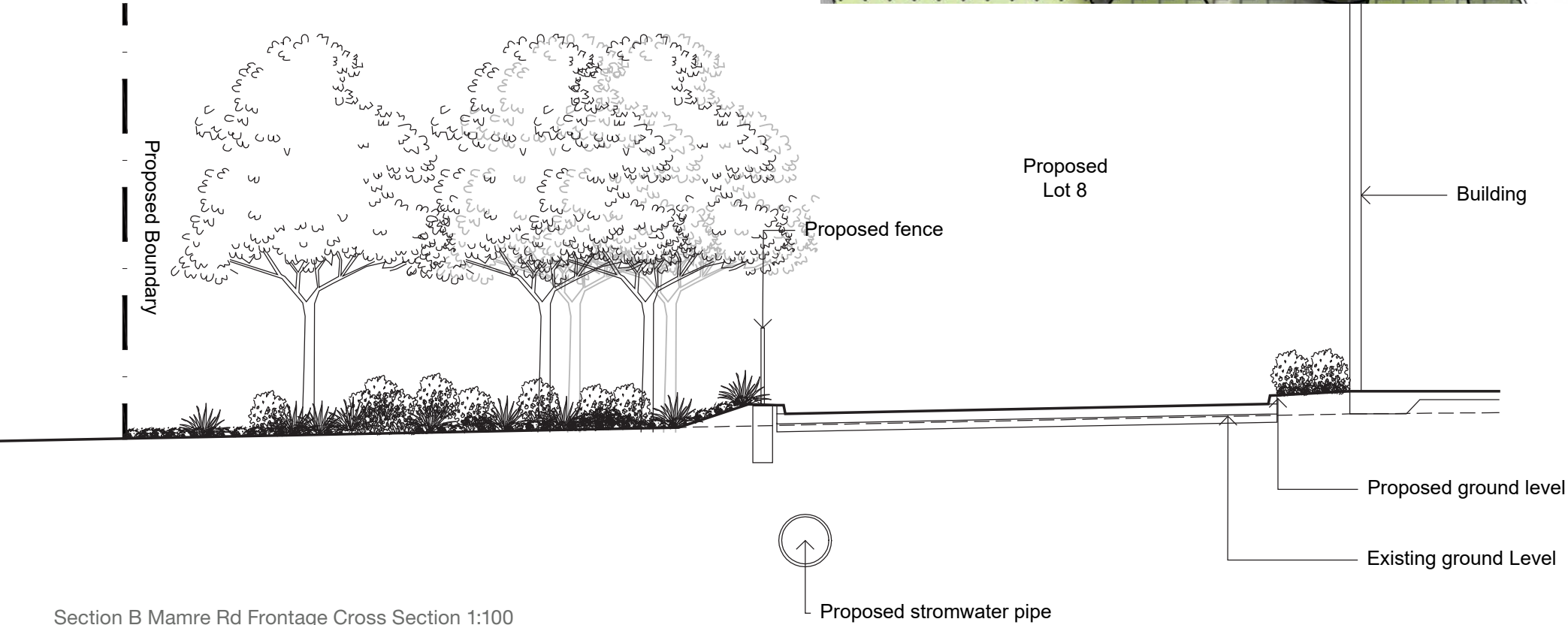
- 01 Massed planting
- 02 Canopy Tree Planting



Massed grasses and shrubs



Canopy tree planting



Section B Mamre Rd Frontage Cross Section 1:100



# Mamre Road Frontage Planting

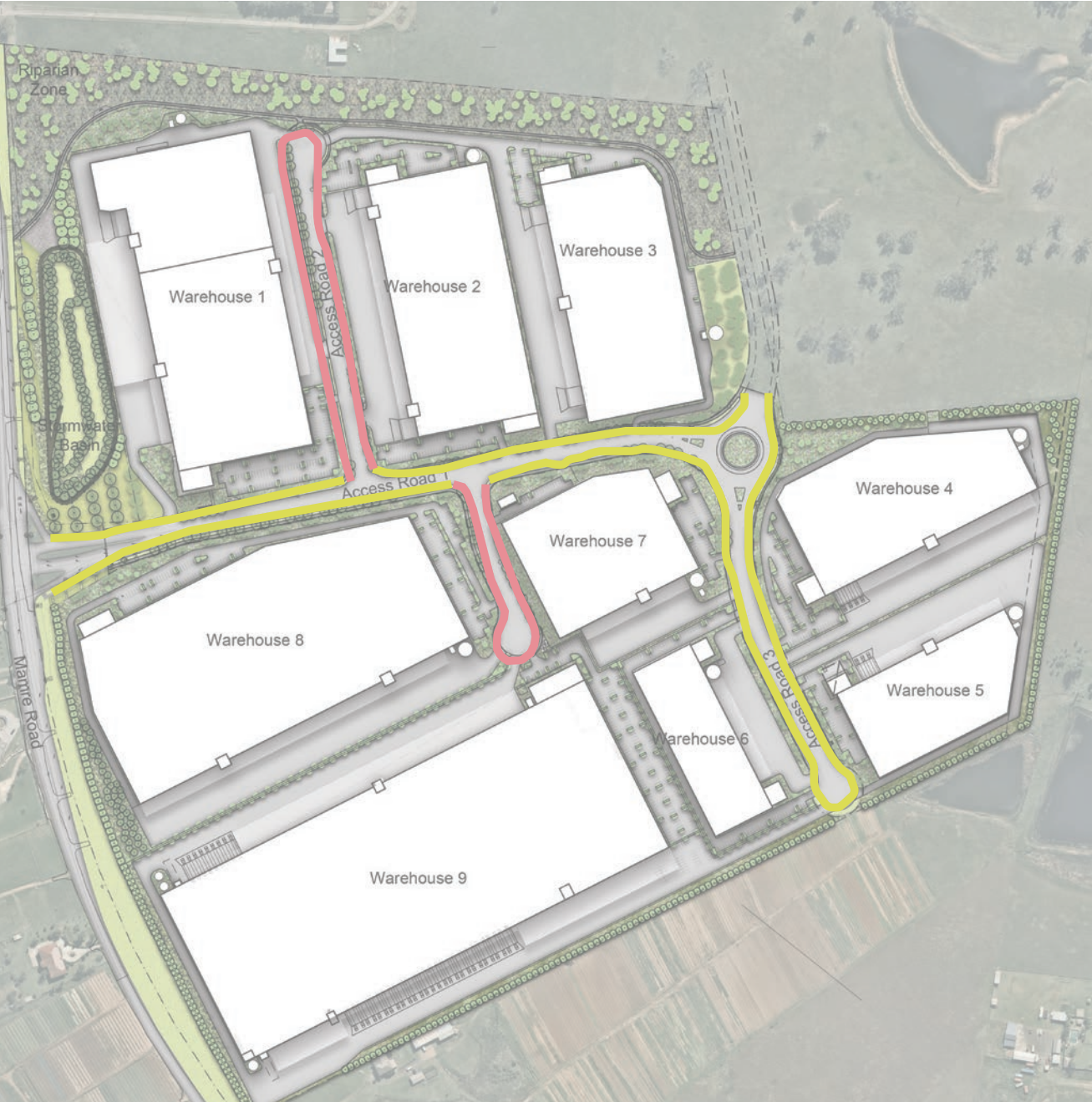
Botanic Name	Common Name	Mature Size (h x w) (m)	
<b>TREES</b>			
<i>Corymbia maculata</i>	Spotted Gum	30 x 8	
<i>Eucalyptus eugenioides</i>	Thin leaved stringybark	20 x 8	
<i>Melaleuca styphelioides</i>	Prickly Leaved Paperbark	8 x 6	
<b>SHRUBS &amp; ACCENTS</b>			
<i>Acmena smithii</i> var. minor	Lilly Pilly	2 x 2	
<i>Callistemon</i> 'Endeavour'	Bottlebrush	2x3	
<i>Callistemon</i> 'Little John'	Dwarf Bottle Brush	1 x 1	
<i>Dodonaea viscosa</i> subsp. cuneata	Wedge-leaf Hop-bush		
<i>Melaleuca linariifolia</i> 'Claret Tops'	Honey Myrtle	1 x 1	
<i>Phormium tenax</i> 'Purpureum'	Bronze Flax	1.5 x 1	
<i>Westringia fruticosa</i>	Coastal Roosemary	2 x 2	
<b>GRASSES AND GROUNDCOVERS</b>			
<i>Carpobrotus glaucescens</i>	Pigface	.15 x 1	
<i>Gazania tomentosa</i>	Silver Gazania	.15 x 1	
<i>Hardenbergia violacea</i>	Purple Coral Pea		
<i>Lomandra longifolia</i>	Matt Rush	1 x 1	
<i>Myoporum parvifolium</i>	Creeping Boobialla	.3 x 2	
<i>Poa</i> 'Kingsdale'	Tussock Grass	.3 x .6	
<i>Pennisetum</i> 'Nafray'	Swamp Foxtail Grass	.6 x .6	
<i>Trachospermum jasminoides</i>	Star Jasmine	0.3 x 0.3	
Indicates species from endemic vegetation community			

## Indicative Species





Estate Roads



Primary Access Roads  
Road 1, Road 3

*Corymbia maculata*  
Spotted Gum



Secondary Roads  
Road 2, Road 4

*E. crebra*  
Narrow Leaved Ironbark



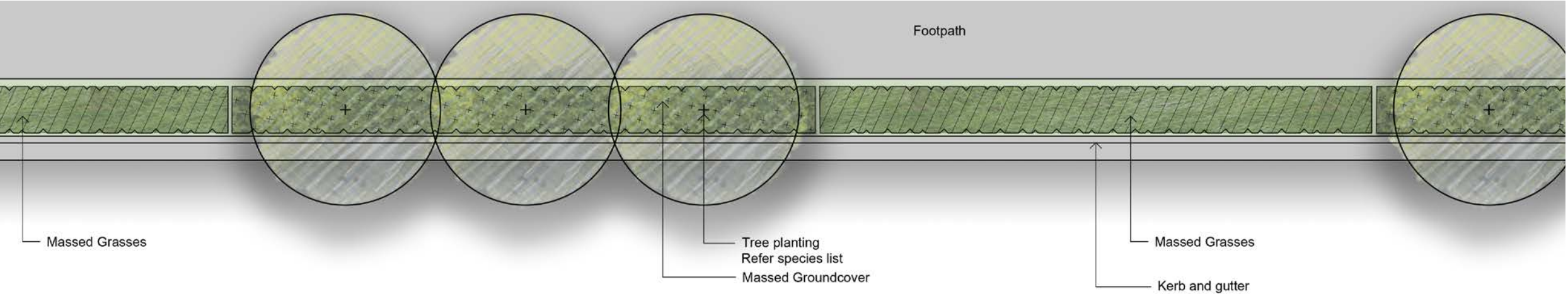
Understorey Planting



*Myoporum parvifolium* to understorey of trees



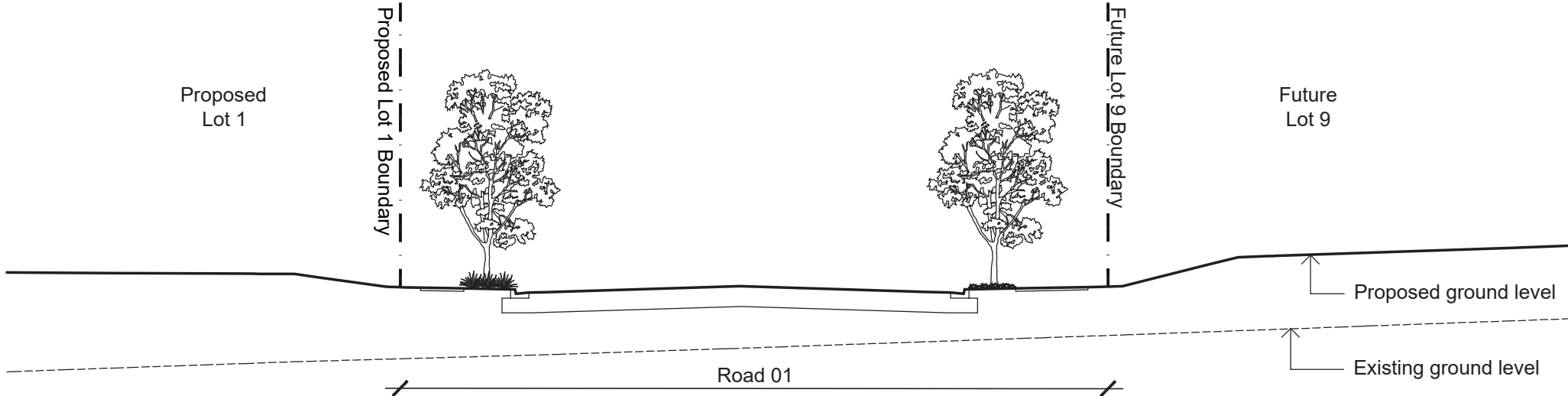
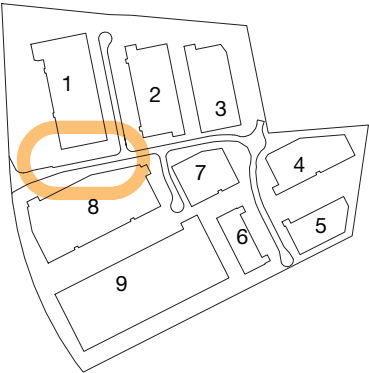
Massed grasses to alternate



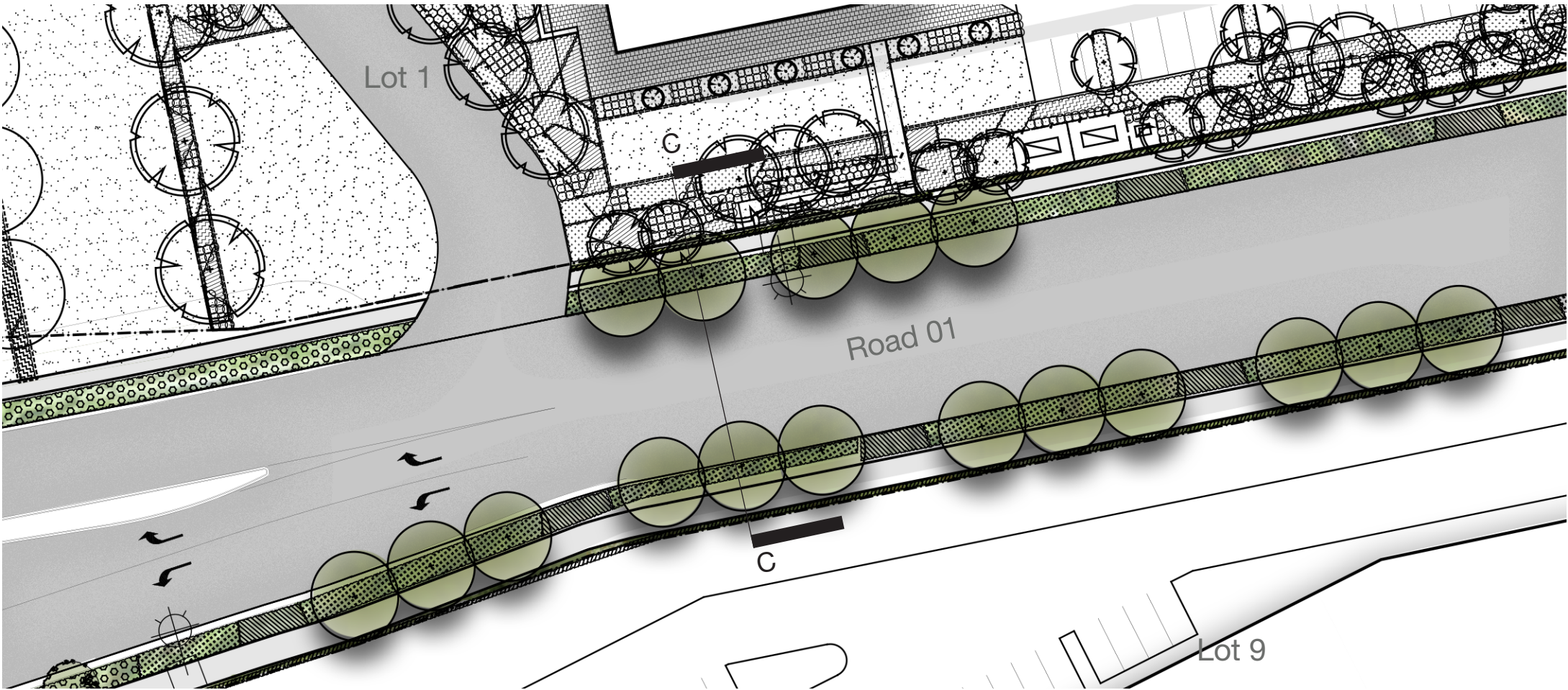


# Primary Access Road

Estate Roads are proposed to have groups of canopy trees with low grass and groundcover underplanting. Tree species will vary based on the street hierarchy.



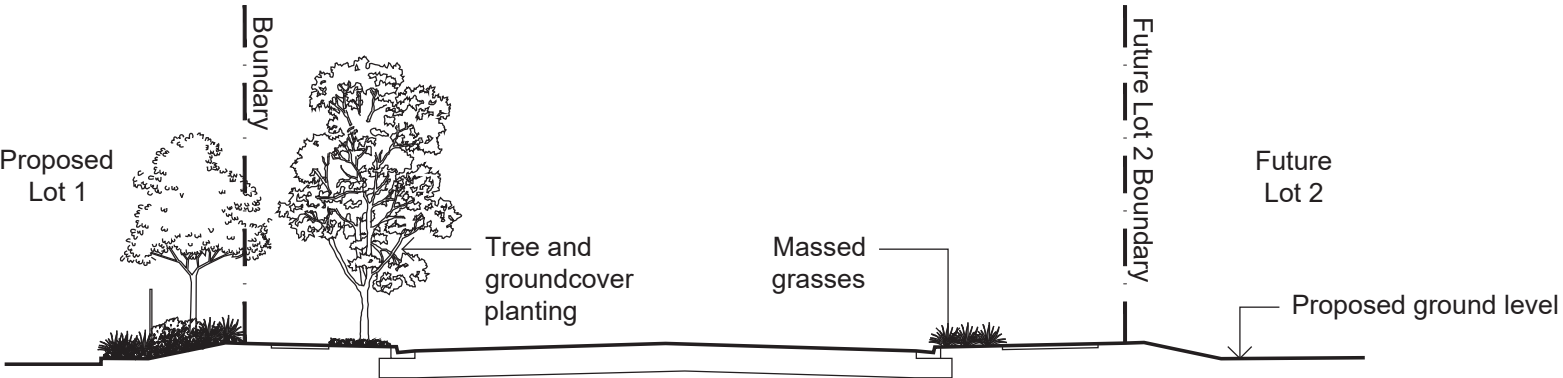
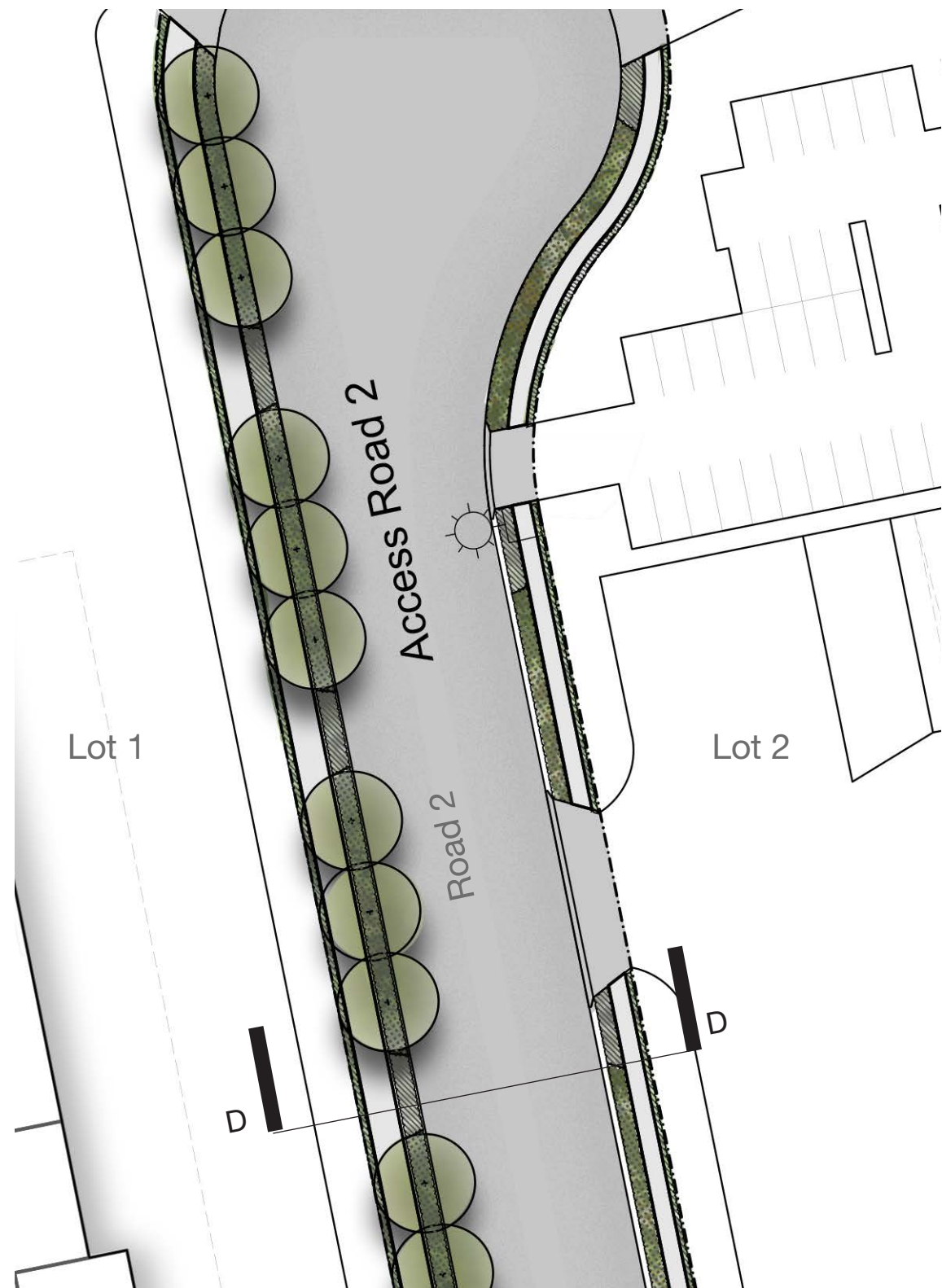
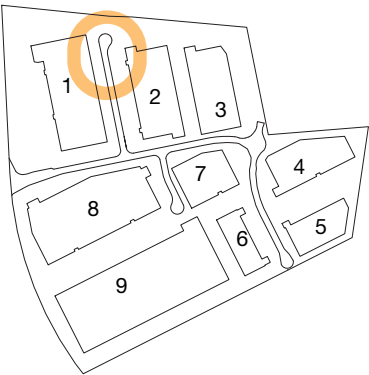
Section C Road 01 Section 1:50





# Secondary Road

Secondary roads feature the same general arrangement as primary roads. Groups of trees can be positioned to allow for the arrangement of services and utilities such as lightpoles.

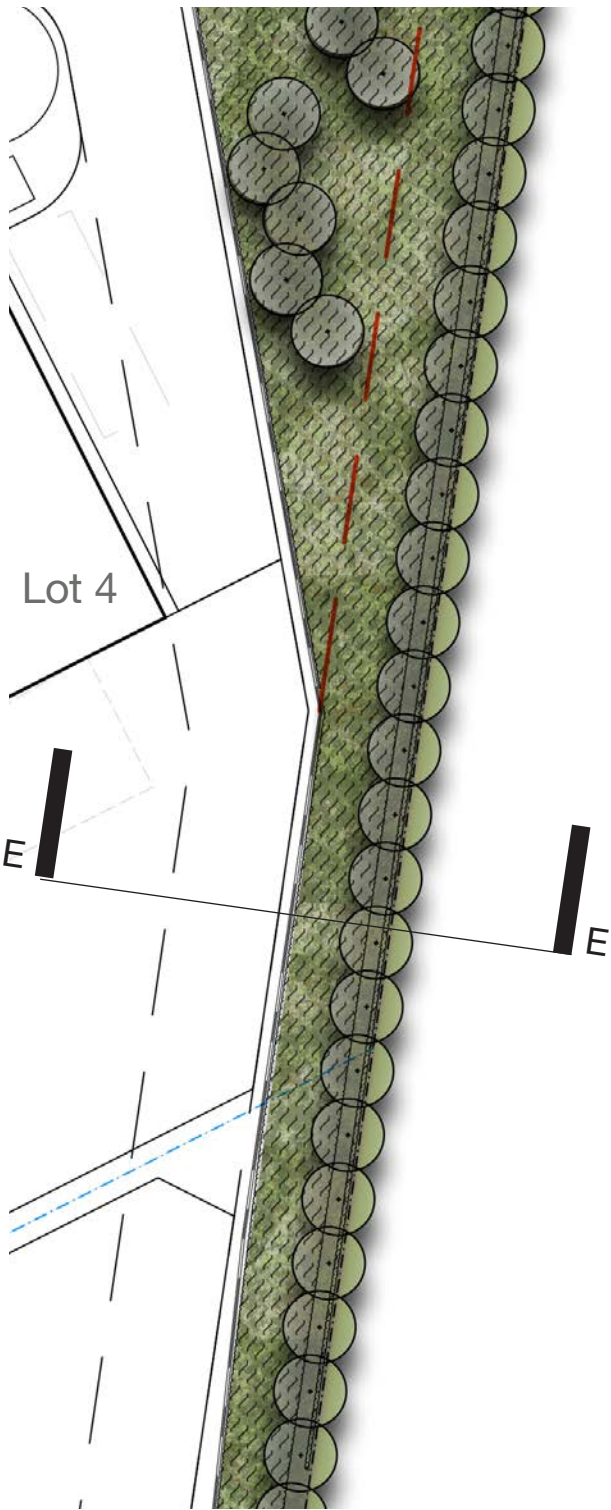
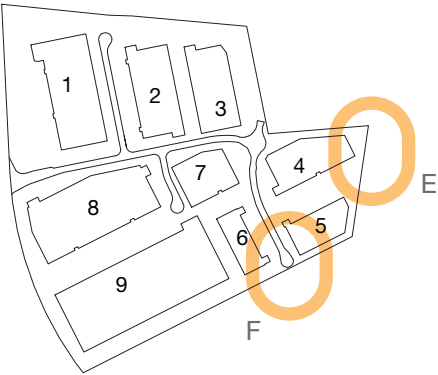


Section D Road 2 Section 1:50



# Boundaries

Boundary treatments will feature planting of native shrub grass and groundcovers. In locations where there is a retaining wall below cascading plants will be provided to break up the mass of the wall.



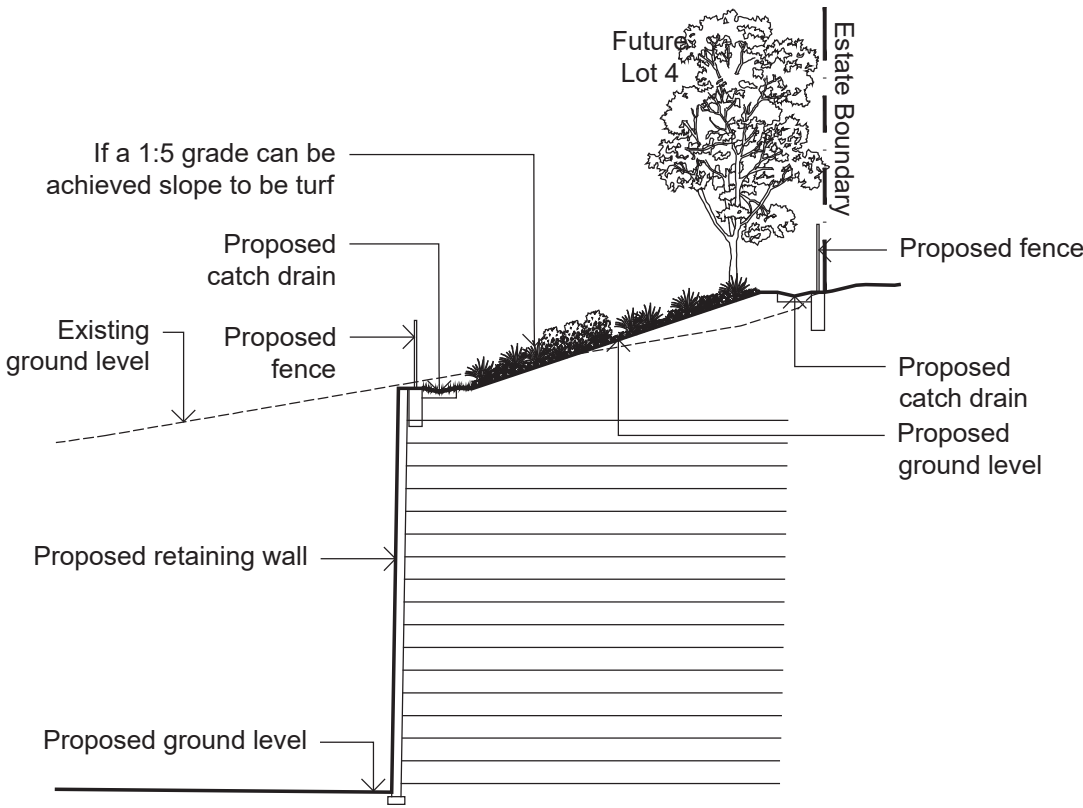
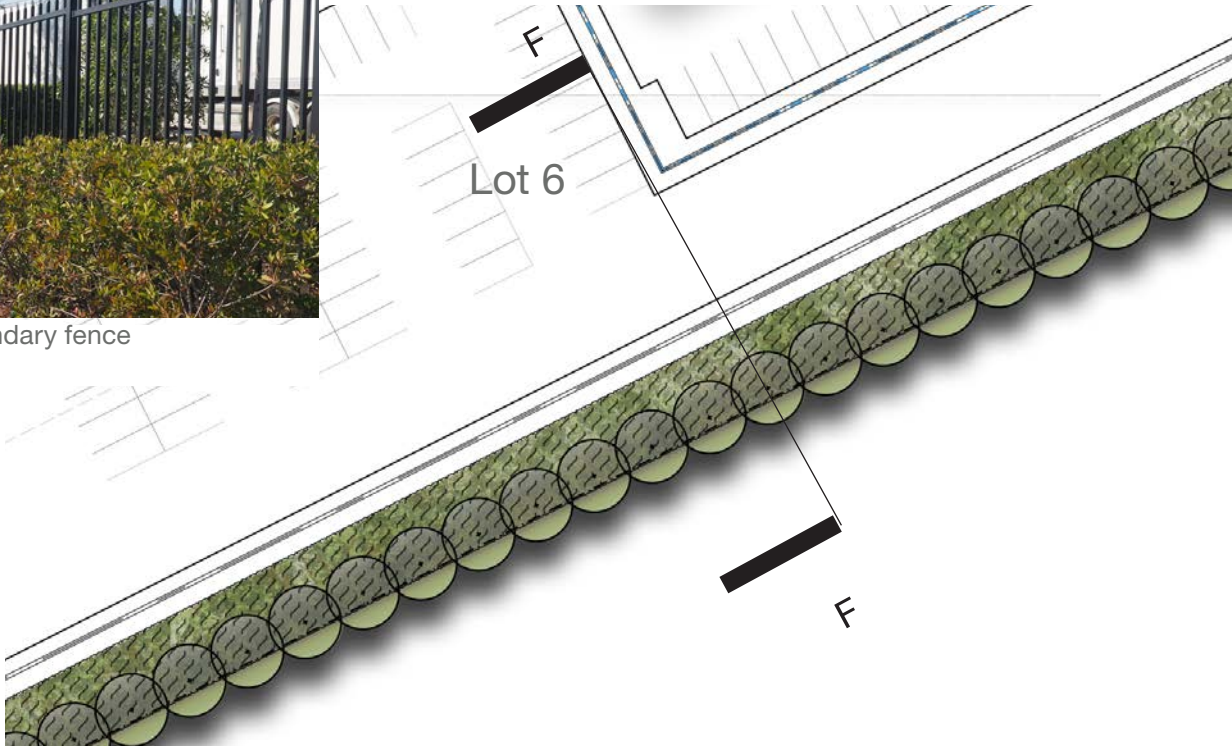
Shrub and grass planting



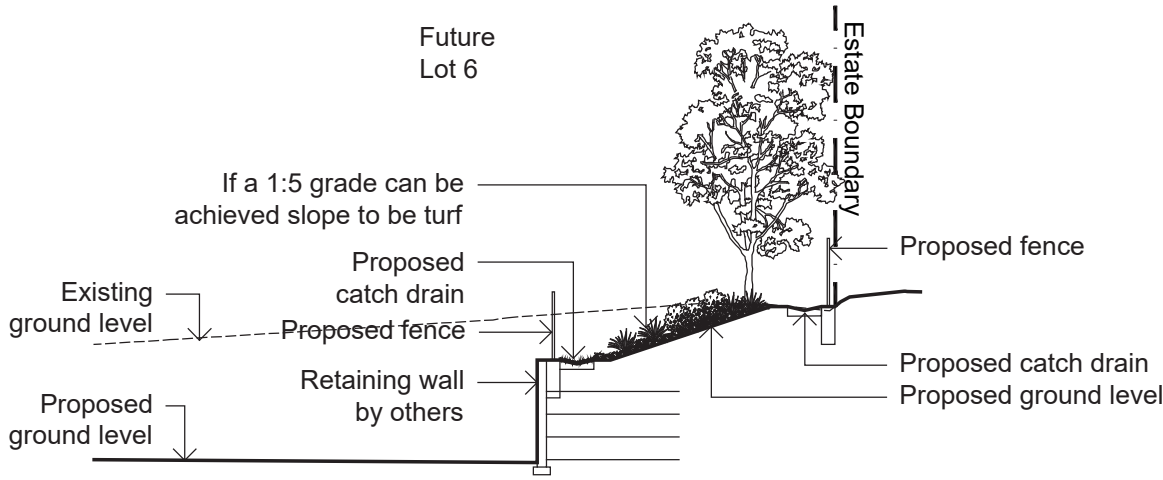
Shrub and grass planting



Security boundary fence



Section E 1:200




Section F 1:200



# Boundary Planting

Boundary Botanic Name	Common Name	Mature Size (h x w) (m)	
TREES			
<i>Corymbia maculata</i> *	Spotted Gum	30 x 8	
<i>Eucalyptus crebra</i>	Narrow-leaved Ironbark		
<i>Eucalyptus eugenioides</i>	Thin-leaved Stringybark	30 x 8	
<i>Eucalyptus moluccana</i>	Grey Box		
SHRUBS & ACCENTS			
<i>Acmena smithii</i> var. minor	Lilly Pilly	2 x 2	
<i>Callistemon</i> 'Endeavour'	Bottlebrush	2x3	
<i>Dodonaea viscosa</i> subsp. <i>cuneata</i>	Wedge-leaf Hop-bush		
GRASSES AND GROUNDCOVERS			
<i>Carpobrotus glaucescens</i>	Pigface	.15 x 1	
<i>Carex inversa</i>			
<i>Hardenbergia violacea</i>	Purple Coral Pea		
<i>Gazania tomentosa</i>	Silver Gazania	.15 x 1	
<i>Myoporum parvifolium</i>	Creeping Boobialla	.3 x 2	
<i>Poa</i> 'Kingsdale'	Tussock Grass	.3 x .6	
<i>Pennisetum</i> 'Nafray'	Swamp Foxtail Grass	.6 x .6	

Indicates species from endemic vegetation community 

## Indicative Species





# Stormwater Basin

The Stormwater basin will feature planting to compliment the water retention and treatment processes designed by civil. A Grass-Cel maintenance pathway provides access around the perimeter of the basin at the top of the embankment. Appropriate safety fencing shall be included where necessary.

## Basin Planting

Botanic Name	Common Name	Mature Size (h x w) (m)
<b>TREES</b>		
<i>Melaleuca styphelioides</i>	Prickly Leaved Paperbark	8 x 6
<b>GRASSES AND GROUNDCOVERS</b>		
<i>Carex inversa</i>	Knob Sedge	.6 x .6
<i>Lomandra longifolia</i>	Matt Rush	1 x 1
<i>Imperata cylindrica var. major</i>	Blady Grass	.6 x .6
<i>Juncus usitatus</i>	Common Rush	.4 x 1
<i>Imperata cylindrica var. major</i>	Blady Grass	.4 x 1
<i>Poa labillardieri</i>	Tussock Grass	.6 x .6
<i>Themeda australis</i>	Kangaroo Grass	.4 x .4

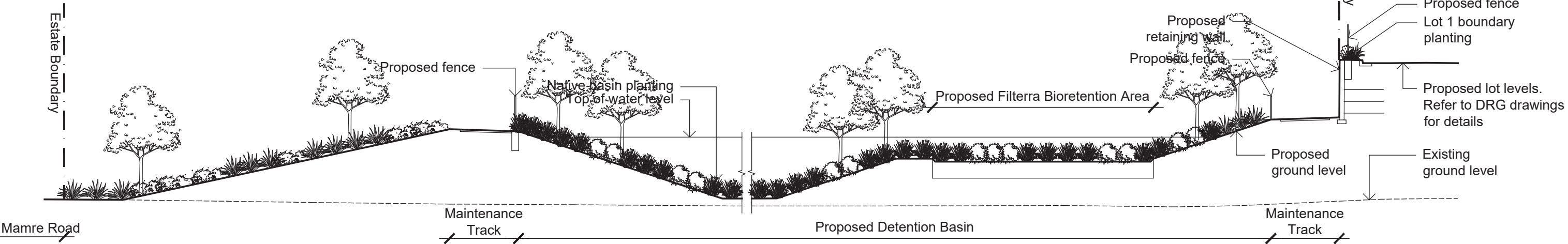
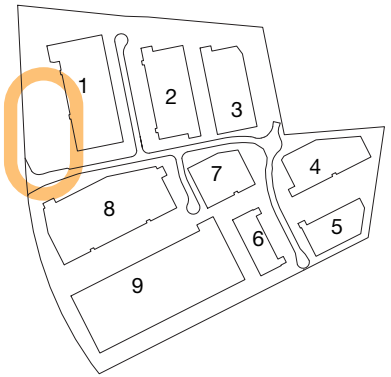
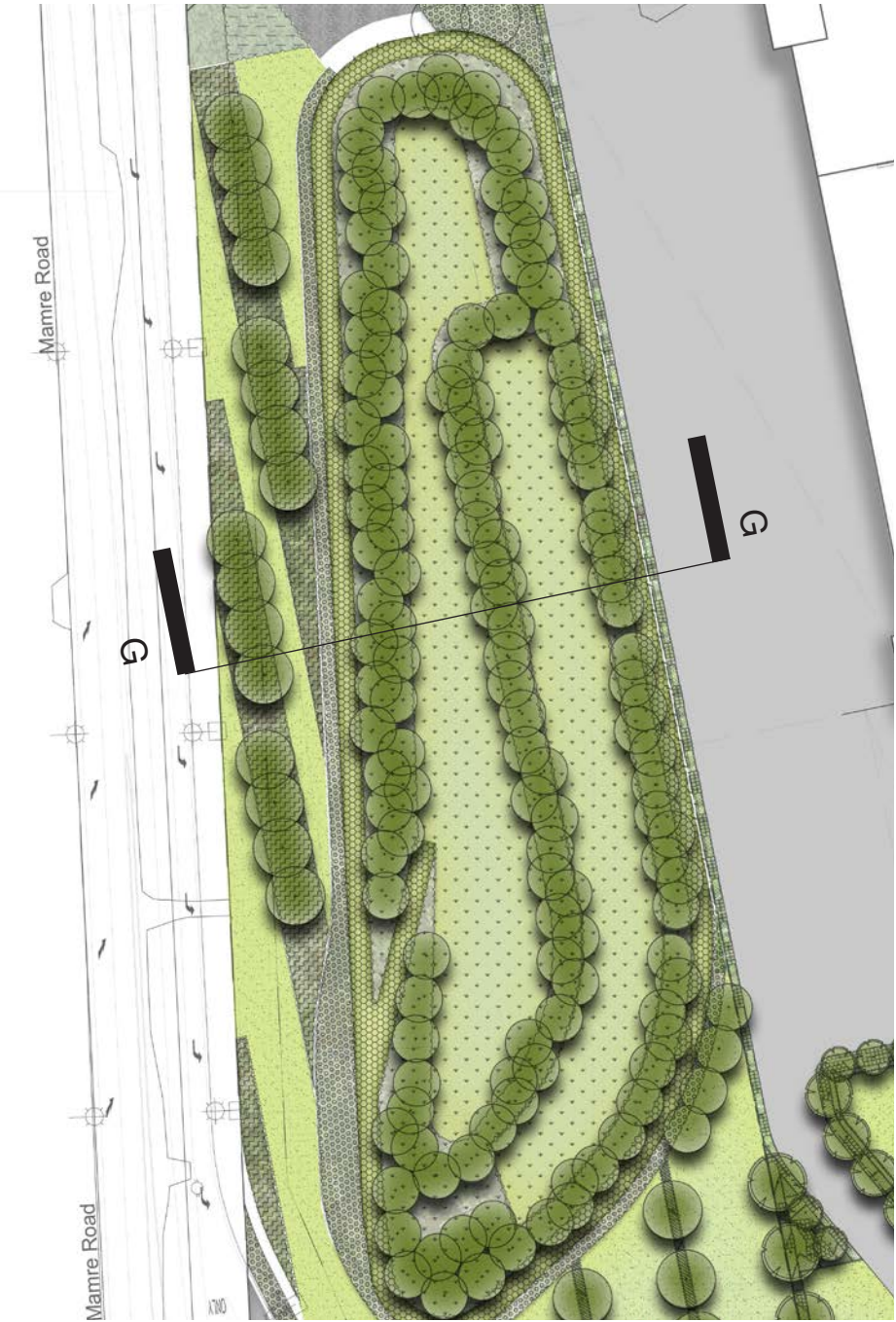
Indicates species from endemic vegetation community



Native basin planting



Fencing to basin

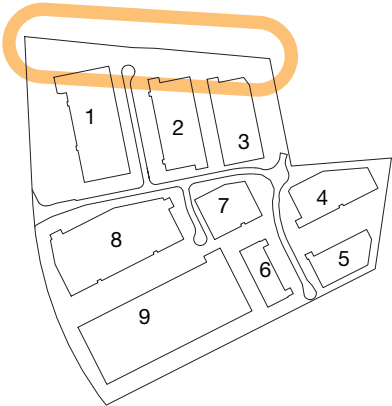
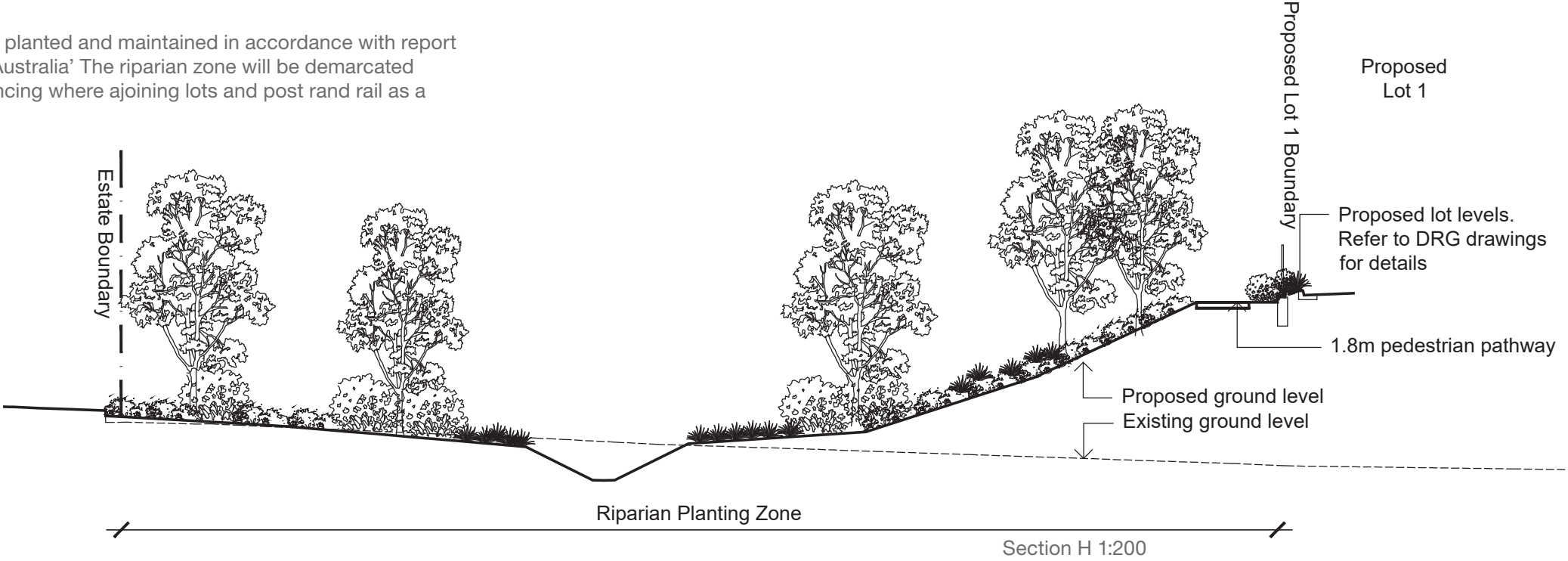


Section G 1:200



# Riparian Zone

The Riparian Zone will be planted and maintained in accordance with report produced by 'Écological Australia'. The riparian zone will be demarcated with fencing - security fencing where adjoining lots and post and rail as a boundary marker style.



Native riparian zone planting in accordance with ecological report

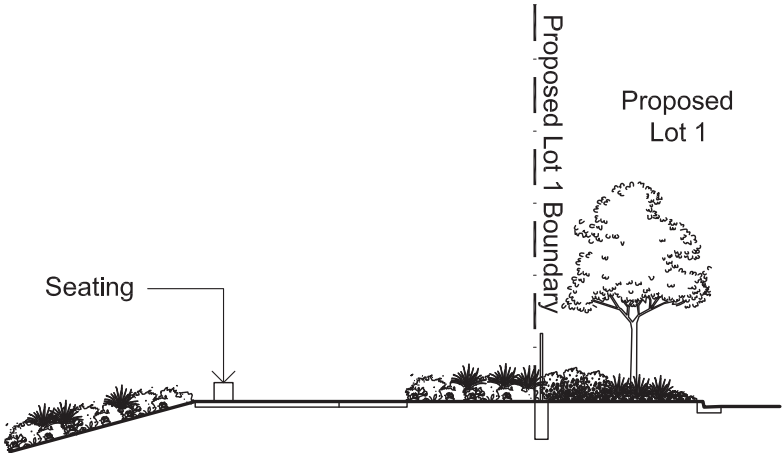


Fencing to riparian zone perimeter

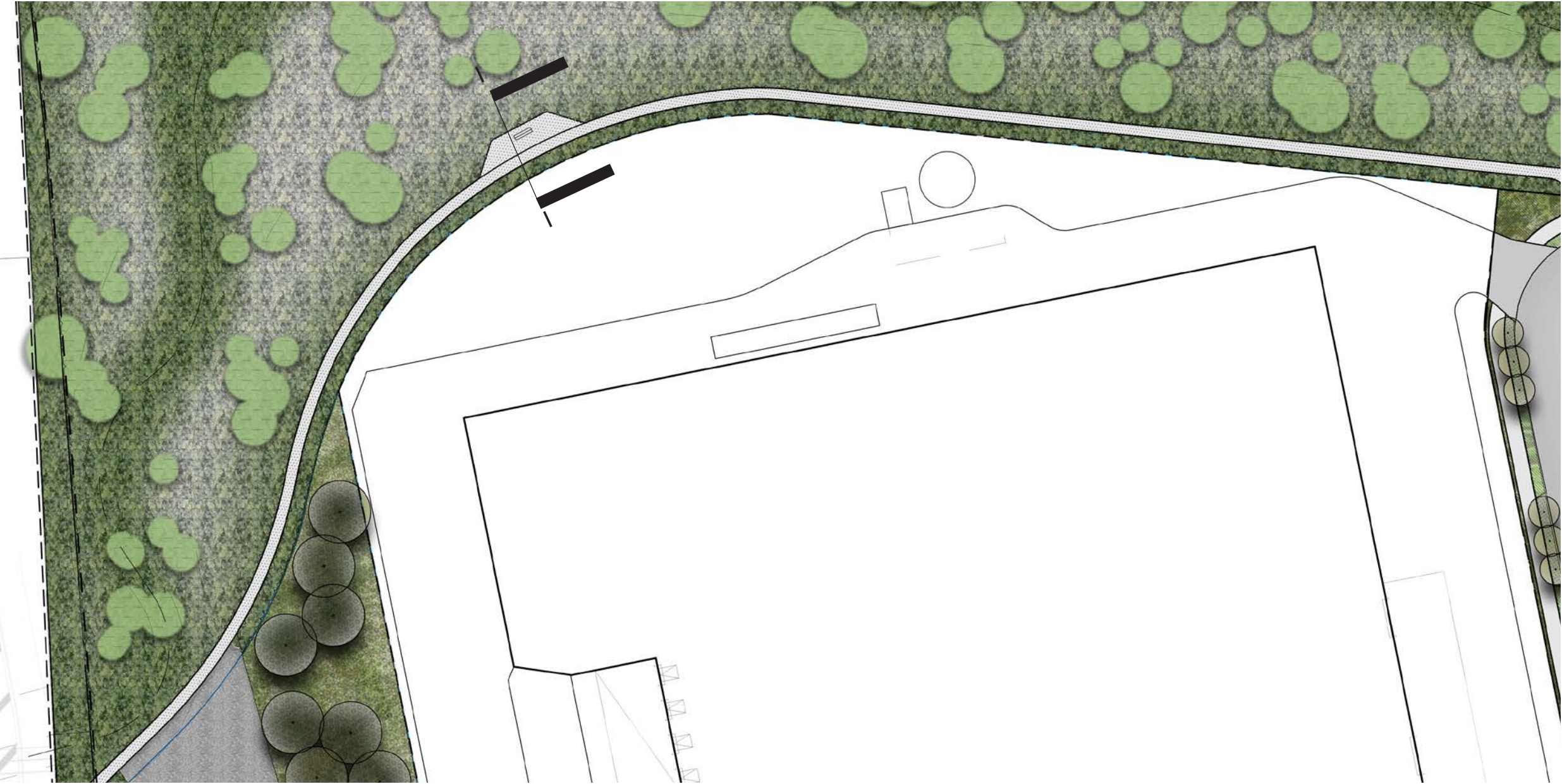
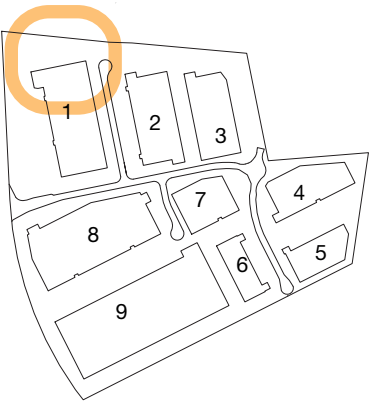


# Riparian Zone Pathway and Nodes

A 1.8m wide pedestrian path will provide access along the riparian zone with a number of amenity nodes featuring seating.



Section I 1:200



Seating nodes



1.8m gravel pathway



# Riparian Zone Planting

Species list from ‘Ecological Australia’ vegetation communities and native species list.

## Riparian Zone

Botanic Name	Common Name
<i>Eucalyptus amplifolia</i>	Cabbage Gum
<i>Eucalyptus crebra</i>	Narrow-leaved Ironbark
<i>Eucalyptus eugenioides</i>	Thin-leaved Stringybark
<i>Eucalyptus moluccana</i>	Grey Box
<i>Eucalyptus tereticornis</i>	Forest Red Gum +
<i>Acacia decurrens</i>	Sydney Green Wattle
<i>Acacia falcata</i>	-
<i>Acacia implexa</i>	Hickory Wattle
<i>Acacia parramattensis</i>	Parramatta Wattle
<i>Bursaria spinosa</i>	Blackthorn
<i>Daviesia ulicifolia</i>	Gorse Bitter Pea
<i>Dillwynia sieberi</i>	-
<i>Dodonaea viscosa subsp. cuneata</i>	Wedge-leaf Hop-bush
<i>Exocarpos cupressiformis</i>	Native Cherry
<i>Indigofera australis</i>	Australian Indigo
<i>Aristida ramosa</i>	Purple Wiregrass
<i>Aristida vagans</i>	Threeawn Speargrass
<i>Bothriochloa macra</i>	Red Grass
<i>Carex inversa</i>	-
<i>Chloris truncata</i>	Windmill Grass
<i>Dichelachne micrantha</i>	Shorthair Plumegrass
<i>Echinopogon caespitosus var. caespitosus</i>	Tufted Hedgehog Grass
<i>Echinopogon ovatus</i>	Forest Hedgehog Grass
<i>Entolasia marginata</i>	Bordered Panic
<i>Fimbristylis dichotoma</i>	Common Fringe-sedge
<i>Imperata cylindrica var. major</i>	Blady Grass
<i>Juncus usitatus</i>	Common Rush
<i>Lomandra filiformis</i>	-
<i>Lomandra multiflora subsp. multiflora</i>	-
<i>Microlaena stipoides var. stipoides</i>	Weeping Meadow Grass
<i>Poa labillardieri</i>	Tussock Grass
<i>Rytidosperma caespitosum</i>	Whitetop
<i>Rytidosperma racemosa var. racemosum</i>	Wallaby Grass
<i>Rytidosperma tenuior</i>	-
<i>Themeda australis</i>	Kangaroo Grass
<i>Asperula conferta</i>	-
<i>Brunoniella australis</i>	Blue Trumpet
<i>Centella asiatica</i>	Indian Pennywort
<i>Cheilanthes sieberi subsp. sieberi</i>	Poison Rock Fern
<i>Clematis glycinoides</i>	Old Man's Beard
<i>Commelina cyanea</i>	Creepinng Christian
<i>Desmodium varians</i>	Slender Tick-trefoil
<i>Dianella longifolia</i>	Blueberry Lily
<i>Dichondra repens</i>	Kidney Weed
<i>Geranium solanderi</i>	Native Geranium
<i>Glycine clandestina</i>	Twining Glycine
<i>Glycine microphylla</i>	Small-leaf Glycine
<i>Glycine tabacina</i>	-
<i>Hardenbergia violacea</i>	Purple Coral Pea
<i>Plectranthus parviflorus</i>	Cockspur Flower
<i>Pultenaea microphylla</i>	-
<i>Solanum prinophyllum</i>	Forest Nightshade

## Indicative Species

