

Henry Deane Plaza

2 Lee St, Haymarket NSW 2000

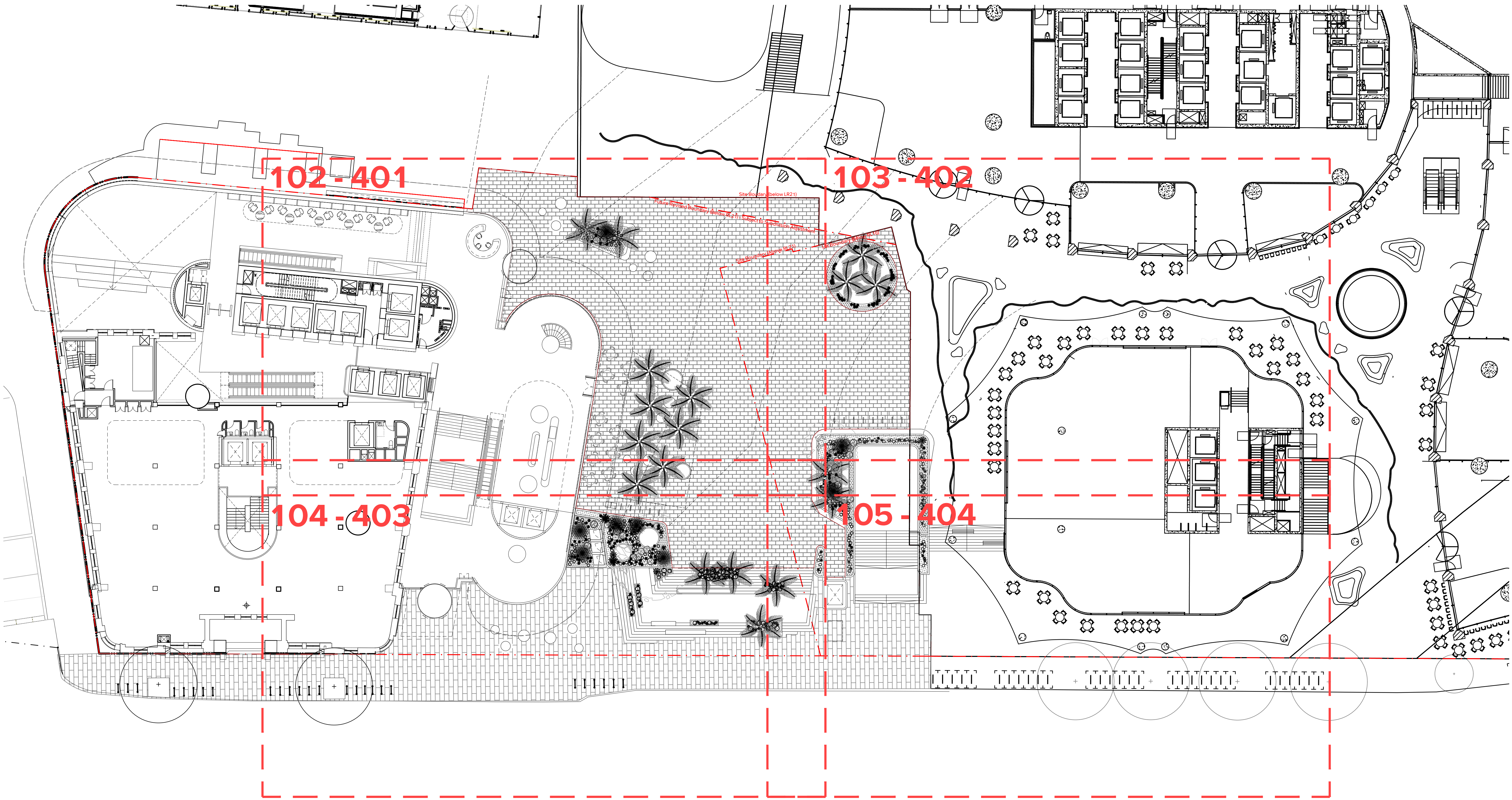
DRAWING SCHEDULE

DRAWING NO.	DRAWING TITLE
ARCADIA-LA-DAD-0000000	COVER SHEET
ARCADIA-LA-DAD-0400000	SPECIFICATION
ARCADIA-LA-DAD-0100000	MASTERPLAN - KEY PLAN
ARCADIA-LA-DAD-1000000	MASTERPLAN - GENERAL ARRANGEMENT PLAN -RL16
ARCADIA-LA-DAD-1000100	MASTERPLAN - GENERAL ARRANGEMENT PLAN -RL21
ARCADIA-LA-SCH-0300000	PLANTING SCHEDULE
ARCADIA-LA-DAD-4000101	SOFTWARES PLAN 01
ARCADIA-LA-DAD-4000102	SOFTWARES PLAN 02
ARCADIA-LA-DAD-4000103	SOFTWARES PLAN 03
ARCADIA-LA-DAD-4000104	SOFTWARES PLAN 04

KEY PLAN

SCALE: 1:500@A1





LANDSCAPE SPECIFICATION NOTES

SERVICES
BEFORE LANDSCAPE WORK IS COMMENCED THE LANDSCAPE CONTRACTOR IS TO ESTABLISH THE POSITION OF ALL SERVICE LINES AND ENSURE TREE PLANTING IS CARRIED OUT AT LEAST 3 METRES AWAY FROM THESE SERVICES. SERVICE LIDS, VENTS AND HYDRANTS SHALL BE LEFT EXPOSED AND NOT COVERED BY ANY LANDSCAPE FINISHES (TURFING, PAVING, GARDEN BEDS ETC.) FINISH ADJOINING SURFACES FLUSH WITH PIT LIDS.

ARBORIST MANAGEMENT OF TREE PROTECTION
A QUALIFIED AND APPROVED ARBORIST IS TO BE CONTRACTED TO UNDERTAKE OR MANAGE THE INSTALLATION OF PROTECTIVE FENCING, AND TO UNDERTAKE SUCH MEASURES AS HE DEEMS APPROPRIATE TO PRESERVE THE SUBJECT TREES TO BE RETAINED. THE ARBORIST IS TO BE RETAINED FOR THE ENTIRE CONTRACT PERIOD TO UNDERTAKE ONGOING MANAGEMENT AND REVIEW OF THE TREES.

DRAINAGE CELL AND FILTER FABRIC
FOR ON-SLAB AREAS INSTALL AN APPROVED 'DRAINAGE CELL' PRODUCT TO COMPREHENSIVELY COVER THE BOTTOM OF ALL PLANTERS, OVER DRAINAGE CELL TO ON-SLAB AREAS, A POLYFELT GEOTEXTILE LINING (AS SUPPLIED BY 'POLYFELT TS' OR APPROVED EQUIVALENT) IS TO BE INSTALLED TO COVER THE BOTTOM OF ALL PLANTERS, TURNED UP 30MM AND TAPED TO THE PLANTER SIDES TO ENSURE SOIL MIX DOES NOT ESCAPE INTO DRAINAGE OUTLETS/HOLES. INSTALL MIN. 50MM COARSE RIVER SAND OVER ALL GEOTEXTILE LINING PRIOR TO INSTALLATION OF SOIL MIX.

PLANTING MIXTURE
SHALL BE HOMOGENOUS BLEND OF SOIL AND ADDITIVES IN THE FOLLOWING PROPORTIONS:
EXISTING SITE SOIL IF SUITABLE OR
IMPORTED TOPSOIL 50%
COMPOST 30%
D/W SAND 20%
SOIL TESTING OF EXISTING SITE SOIL IS TO BE UNDERTAKEN TO ASSESS SUITABILITY OF USE AS PLANTING TOPSOIL AND COMPLIANCE WITH AUSTRALIAN STANDARDS.

MULCH APPLICATION
PLACE MULCH TO THE REQUIRED DEPTH, (REFER TO DRAWINGS) CLEAR OF PLANT STEMS, AND RAKE TO AN EVEN SURFACE FINISHING 25MM BELOW ADJOINING LEVELS. ENSURE MULCH IS WATERED IN AND TAMPED DOWN DURING INSTALLATION.

MULCH TYPE
PINE BARK: FROM MATURE TREES, GRADED IN SIZE FROM 15MM TO 30MM, FREE FROM WOOD SLIVERS. DARK BROWN IN COLOUR AND TEXTURE.

COMPOST
SHALL BE WELL ROTTED VEGETATIVE MATERIAL OR ANIMAL MANURE, OR OTHER APPROVED MATERIAL, FREE FROM HARMFUL CHEMICALS, GRASS AND WEED GROWTH AND WITH NEUTRAL PH. PROVIDE A CERTIFICATE OF PROOF OF PH UPON REQUEST.

PLANT MATERIAL
ALL PLANTS SUPPLIED ARE TO CONFORM WITH THOSE SPECIES LISTED IN THE PLANT SCHEDULE ON THE DRAWINGS. GENERALLY PLANTS SHALL BE VIGOROUS, WELL ESTABLISHED, HARDENED OFF, OF GOOD FORM CONSISTENT WITH SPECIES OR VARIETY, NOT SOFT OR FORCED, FREE FROM DISEASE OR INSECT PESTS WITH LARGE HEALTHY ROOT SYSTEMS AND NO EVIDENCE OF HAVING BEEN RESTRICTED OR DAMAGED. TREES SHALL HAVE A LEADING SHOOT, IMMEDIATELY REJECT DRIED OUT, DAMAGED OR UNHEALTHY PLANT MATERIAL BEFORE PLANTING. ALL STOCK IS TO BE CONTAINER GROWN FOR A MINIMUM OF SIX (6) MONTHS PRIOR TO DELIVERY TO SITE

FERTILISER MASS PLANTING AREAS:
FERTILISER SHALL BE 'NUTRICOTE' OR APPROVED EQUIVALENT IN GRANULE FORM INTENDED FOR SLOW RELEASE OF PLANT NUTRIENTS OVER A PERIOD OF APPROXIMATELY NINE MONTHS. THOROUGHLY MIX FERTILISER WITH PLANTING MIXTURE AT THE RECOMMENDED RATE, PRIOR TO INSTALLING PLANTS.

STAKING AND TYING
STAKES SHALL BE STRAIGHT HARDWOOD, FREE FROM KNOTS AND TWISTS, POINTED AT ONE END AND SIZED ACCORDING TO SIZE OF PLANTS TO BE STAKED.
A. 5-15 LITRE SIZE PLANT 1X(1200X25X25MM)
B. 35-75 LITRE SIZE PLANT 2X(1500X38X38MM)
C. 100- GREATER THAN 200LITRE 3X(1800X50X50MM)
TIES SHALL BE 50MM WIDE HESSIAN WEBBING OR APPROVED EQUIVALENT NAILED OR STAPLED TO STAKE. DRIVE STAKES A MINIMUM ONE THIRD OF THEIR LENGTH, AVOIDING DAMAGE TO THE ROOT SYSTEM, ON THE WINDWARD SIDE OF THE PLANT.

IRRIGATION SYSTEM
SUPPLY AN AUTOMATIC WATERING SYSTEM USING 'TORO IRRIGATION SYSTEM' OR SIMILAR APPROVED, WITH MICRO-JET SPRINKLER HEADS AND LOW DENSITY, RUBBER MODIFIED POLYPROPYLENE RETICULATION, TO INCLUDE FILTERS, BENDS, JUNCTIONS, ENDS AND OTHER ANCILLARY EQUIPMENT. THE LANDSCAPER SHALL NOMINATE HIS SOURCE OF SUPPLY FOR THE WATERING SYSTEM AND OBTAIN APPROVAL FROM THE SUPERINTENDENT BEFORE PLACING ORDERS FOR EQUIPMENT OR SUPPLY.

A SCHEMATIC PLAN OF THE PROPOSED IRRIGATION SYSTEM IS TO BE PREPARED BY THE CONTRACTOR, SHOWING SOLENOIDS, PIPE DIAMETERS, AND ALL NOZZLE AND TRICKLE ATTACHMENT TYPES (INCLUDING SPRAY/HEAD ANGLE), FOR REVIEW BY THE SUPERINTENDENT PRIOR TO INSTALLATION

THE CONTRACTOR IS TO LIASE WITH THE HYDRAULIC ENGINEER AND COUNCIL AS NECESSARY, TO ENSURE THE THE IRRIGATION SYSTEM CONFORMS WITH ALL THE COUNCIL AND WATER BOARD CODES AND REQUIREMENTS.

PROVIDE AN AUTOMATIC CONTROLLER THAT PROVIDES FOR TWO WEEK SCHEDULING AND HOURLY MULTI-CYCLE OPERATION. THE CONTROLLER SHALL MANUAL OVERRIDE. PROGRAMMING SHALL BE UNDERTAKEN BY THE CONTRACTOR WHO SHALL ADVISE ON THE OPERATION OF THE SYSTEM.

PROVISION OF SECURE HOUSING FOR THE AUTOMATIC IRRIGATION CONTROLLER TO BE LOCATED IN ASSOCIATION WITH THE LANDSCAPE CONTRACTOR AND LOCATION CONFIRMED BY THE SUPERINTENDENT. WIRING TO CONNECT REMOTE SOLENOID LOCATIONS IS TO BE PROVIDED. THE CONTROLLER SHALL BE LOCATED IN A DRY PLACE, PROTECTED FROM THE WEATHER, AND ALL CABLE CONNECTIONS SHALL BE MADE WITH WATERPROOF CONNECTORS.

WATER SUPPLY POINTS TO BE SUPPLIED BY BUILDER.

IT SHALL BE THE CONTRACTOR'S RESPONSIBILITY TO ENSURE AND GUARANTEE SATISFACTORY OPERATION OF THE IRRIGATION SYSTEM.

AFTER THE SYSTEM HAS BEEN INSTALLED TO THE SATISFACTION OF THE SUPERINTENDENT, THE INSTALLATION SHALL BE TESTED UNDER KNOWN WORKING CONDITIONS. ACCEPTANCE OF THE INSTALLED PLANT AND EQUIPMENT SHALL BE SUBJECT TO THESE BEING SATISFACTORY.

TREATED PINE TIMBER EDGING
TIMBER EDGE: 100 X 25MM CCA TREATED RADIATA PINE TIMBER STAKES: 50 X 50 X 500MM CCA TREATED RADIATA PINE-SHARPENED AT ONE END. INSTALL IN LOCATIONS SHOWN ON THE DRAWINGS FLUSH TO FINISHED SURFACE LEVELS.

LANDSCAPE MAINTENANCE PROGRAM

MAINTENANCE SHALL MEAN THE CARE AND MAINTENANCE OF THE LANDSCAPE WORKS BY ACCEPTED HORTICULTURAL PRACTICE AS RECTIFYING ANY DEFECTS THAT BECOME APPARENT IN THE LANDSCAPE WORKS UNDER NORMAL USE. THIS SHALL INCLUDE, BUT SHALL NOT BE LIMITED TO, WATERING, MOWING, FERTILISING, RESEEDING, RETURNING, WEEDING, PEST AND DISEASE CONTROL, STAKING AND TYING, REPLANTING, CULTIVATION, PRUNING, AERATING, RENOVATING, TOP DRESSING, MAINTAINING THE SITE IN A NEAT AND TIDY CONDITION AS FOLLOWS:-

GENERAL
THE LANDSCAPE CONTRACTOR SHALL MAINTAIN THE LANDSCAPE WORKS FOR THE TERM OF THE MAINTENANCE (OR PLANT ESTABLISHMENT) PERIOD TO THE SATISFACTION OF THE COUNCIL. THE LANDSCAPE CONTRACTOR SHALL ATTEND TO THE SITE ON A WEEKLY BASIS. THE MAINTENANCE PERIOD SHALL COMMENCE AT PRACTICAL COMPLETION AND CONTINUE FOR A PERIOD OF TWENTY SIX (26) WEEKS.

WATERING
GRASS, TREES AND GARDEN AREAS SHALL BE WATERED REGULARLY SO AS TO ENSURE CONTINUOUS HEALTHY GROWTH.

RUBBISH REMOVAL
DURING THE TERM OF THE MAINTENANCE PERIOD THE LANDSCAPE CONTRACTOR SHALL REMOVE RUBBISH THAT MAY OCCUR AND REOCCUR THROUGHOUT THE MAINTENANCE PERIOD. THIS WORK SHALL BE CARRIED OUT REGULARLY SO THAT AT WEEKLY INTERVALS THE AREA MAY BE OBSERVED IN A COMPLETELY CLEAN AND TIDY CONDITION.

REPLACEMENTS
THE LANDSCAPE CONTRACTOR SHALL REPLACE ALL PLANTS THAT ARE MISSING, UNHEALTHY OR DEAD AT THE LANDSCAPE CONTRACTOR'S COST. REPLACEMENTS SHALL BE OF THE SAME SIZE, QUALITY AND SPECIES AS THE PLANT THAT HAS FAILED UNLESS OTHERWISE DIRECTED BY THE LANDSCAPE ARCHITECT. REPLACEMENTS SHALL BE MADE ON A CONTINUING BASIS NOT EXCEEDING TWO (2) WEEKS AFTER THE PLANT HAS DIED OR IS SEEN TO BE MISSING.

STAKES AND TIES
THE LANDSCAPE CONTRACTOR SHALL REPLACE OR ADJUST PLANT STAKES, AND TREE GUARDS AS NECESSARY OR AS DIRECTED BY THE LANDSCAPE ARCHITECT. REMOVE STAKES AND TIES AT THE END OF THE MAINTENANCE PERIOD IF SO DIRECTED.

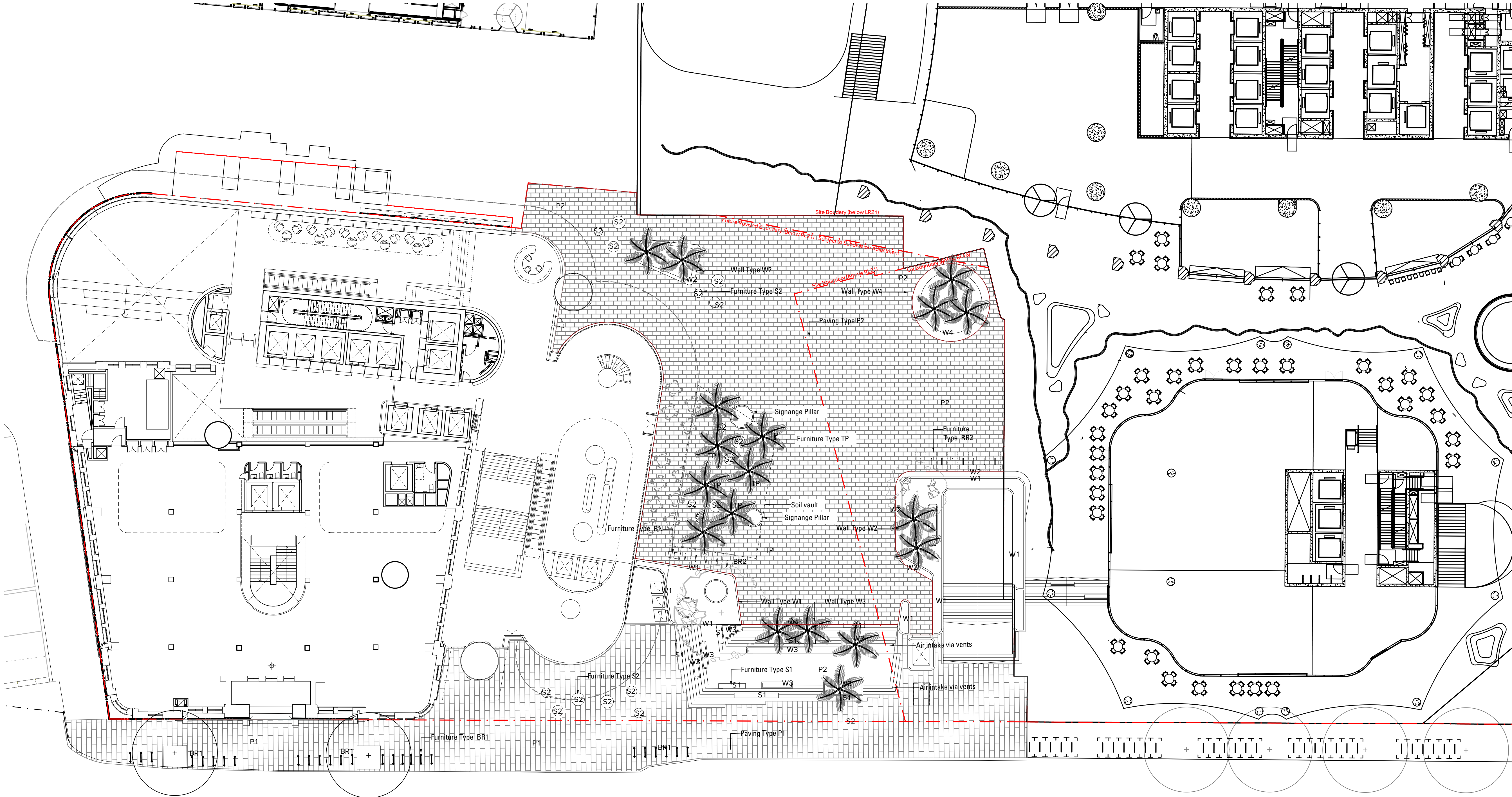
PRUNING
TREES AND SHRUBS SHALL BE PRUNED AS DIRECTED BY THE LANDSCAPE ARCHITECT. PRUNING WILL BE DIRECTED AT THE MAINTENANCE OF THE DENSE FOLIAGE OR MISCELLANEOUS PRUNING AND BENEFICIAL TO THE CONDITION OF THE PLANTS. ANY DAMAGED GROWTH SHALL BE PRUNED. ALL PRUNED MATERIAL SHALL BE REMOVED FROM THE SITE.

MULCHED SURFACES
ALL MULCHED SURFACES SHALL BE MAINTAINED IN A CLEAN AND TIDY CONDITION AND BE REINSTATED IF NECESSARY TO ENSURE THAT A DEPTH OF 75MM IS MAINTAINED. ENSURE MULCH IS KEPT CLEAR OF PLANT STEMS AT ALL TIMES.

PEST AND DISEASED CONTROL
THE LANDSCAPE CONTRACTOR SHALL SPRAY AGAINST INSECT AND FUNGUS INFESTATION WITH ALL SPRAYING TO BE CARRIED OUT IN ACCORDANCE WITH THE MANUFACTURER'S DIRECTIONS. REPORT ALL INSTANCES OF PESTS AND DISEASES (IMMEDIATELY THAT THEY ARE DETECTED) TO THE LANDSCAPE ARCHITECT.

WEED ERADICATION
ERADICATE WEEDS BY ENVIRONMENTALLY ACCEPTABLE METHODS USING A NON-RESIDUAL GLYPHOSATE HERBICIDE (EG. 'ROUNDUP') IN ANY OF ITS REGISTERED FORMULAE, AT THE RECOMMENDED MAXIMUM RATE, REGULARLY REMOVE BY HAND. WEED GROWTH THAT MAY OCCUR OR RECUR THROUGHOUT GRASSED, PLANTED AND MULCHED AREAS. REMOVE WEED GROWTH FROM AN AREA 750MM DIAMETER AROUND THE BASE OF TREES IN GRASSED AREAS. CONTINUE ERADICATION THROUGHOUT THE COURSE OF THE WORKS AND DURING THE MAINTENANCE PERIOD.

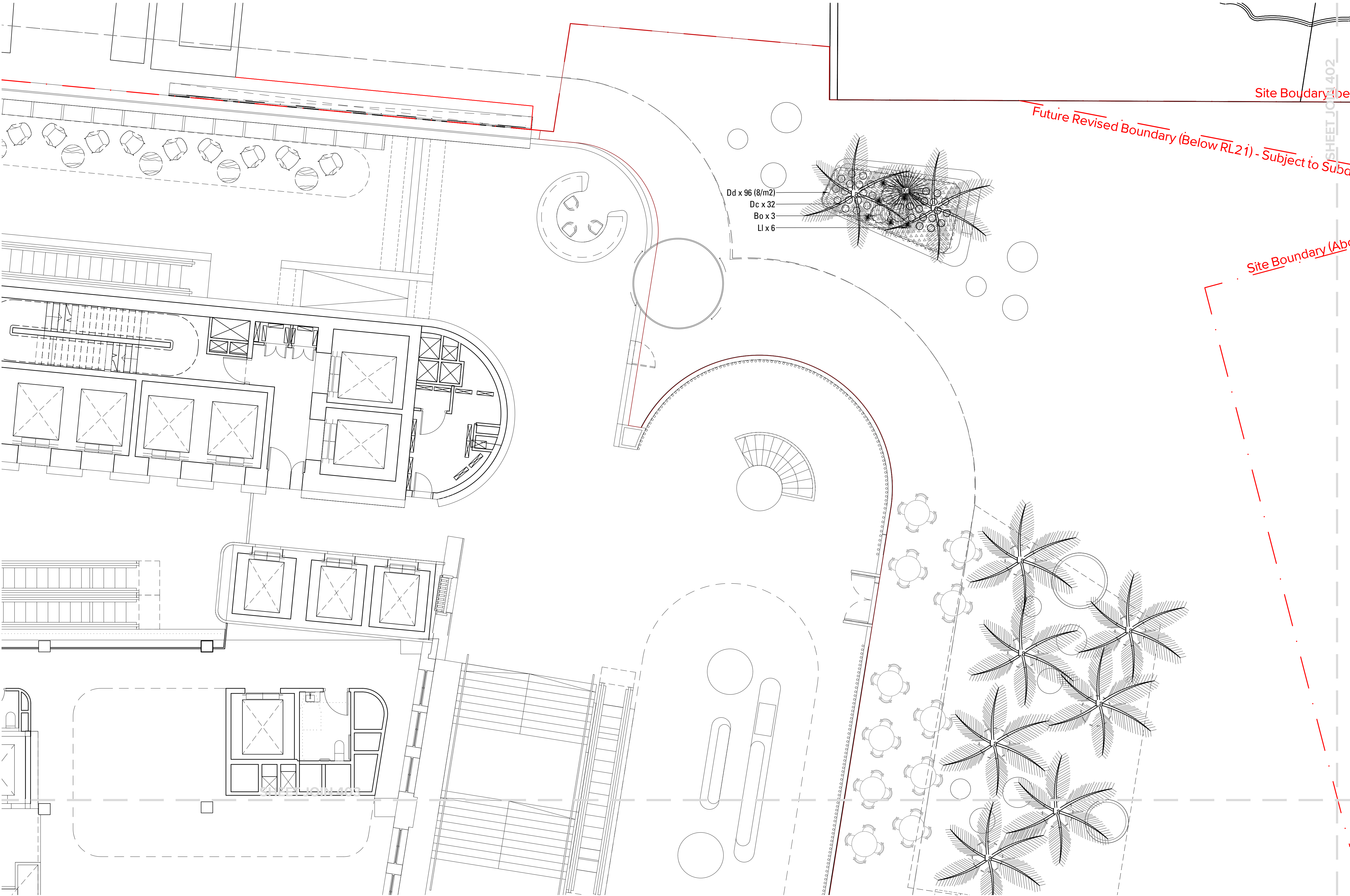
SOIL SUBSIDENCE
ANY SOIL SUBSIDENCE OR EROSION WHICH MAY OCCUR AFTER THE SOIL FILLING AND PREPARATION OPERATIONS SHALL BE MADE GOOD BY THE LANDSCAPE CONTRACTOR AT NO COST TO THE CLIENT.



LEGEND_MATERIALS

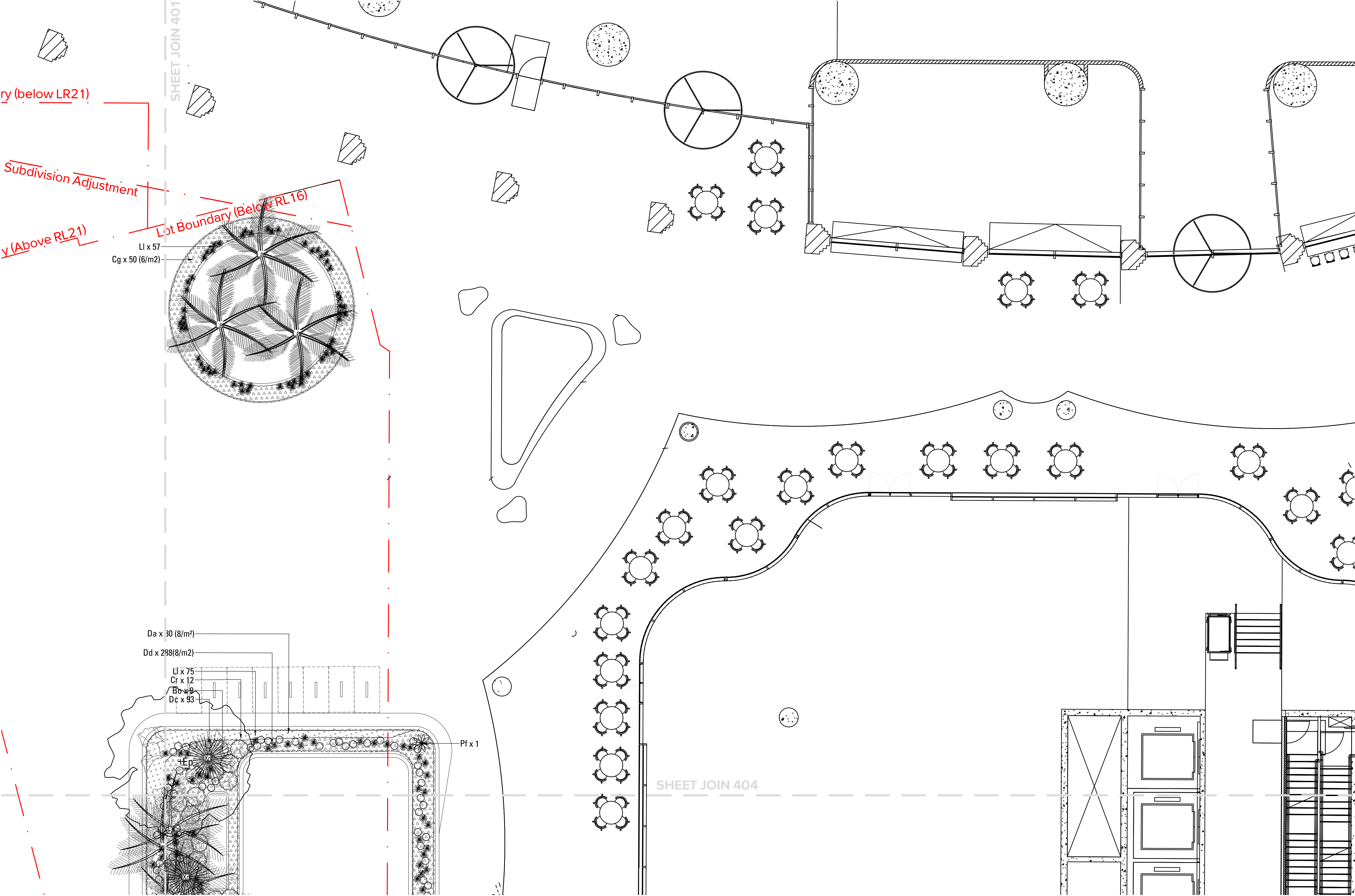
- P1 PAVING TYPE P1
COS Unit Paving
- P2 PAVING TYPE P2
Granite Unit Paving
- W1 WALL TYPE W1
Brick Planter Wall
- W2 WALL TYPE W2
Brick Seating Wall
- W3 WALL TYPE W3
Granite Planter Wall
- W4 WALL TYPE W4
Stainless Steel Wall
- S1 FURNITURE TYPE S1
Timber Seat with Backrest
- S2 FURNITURE TYPE S2
Granite Block Seat
- TP FURNITURE TYPE TP
In-Ground Tree Pit
- BR1 FURNITURE TYPE BR
Bike Rack - COS
- BR2 FURNITURE TYPE BR
Bike Rack - Bespoke
- BN FURNITURE TYPE BN
Waste Bins





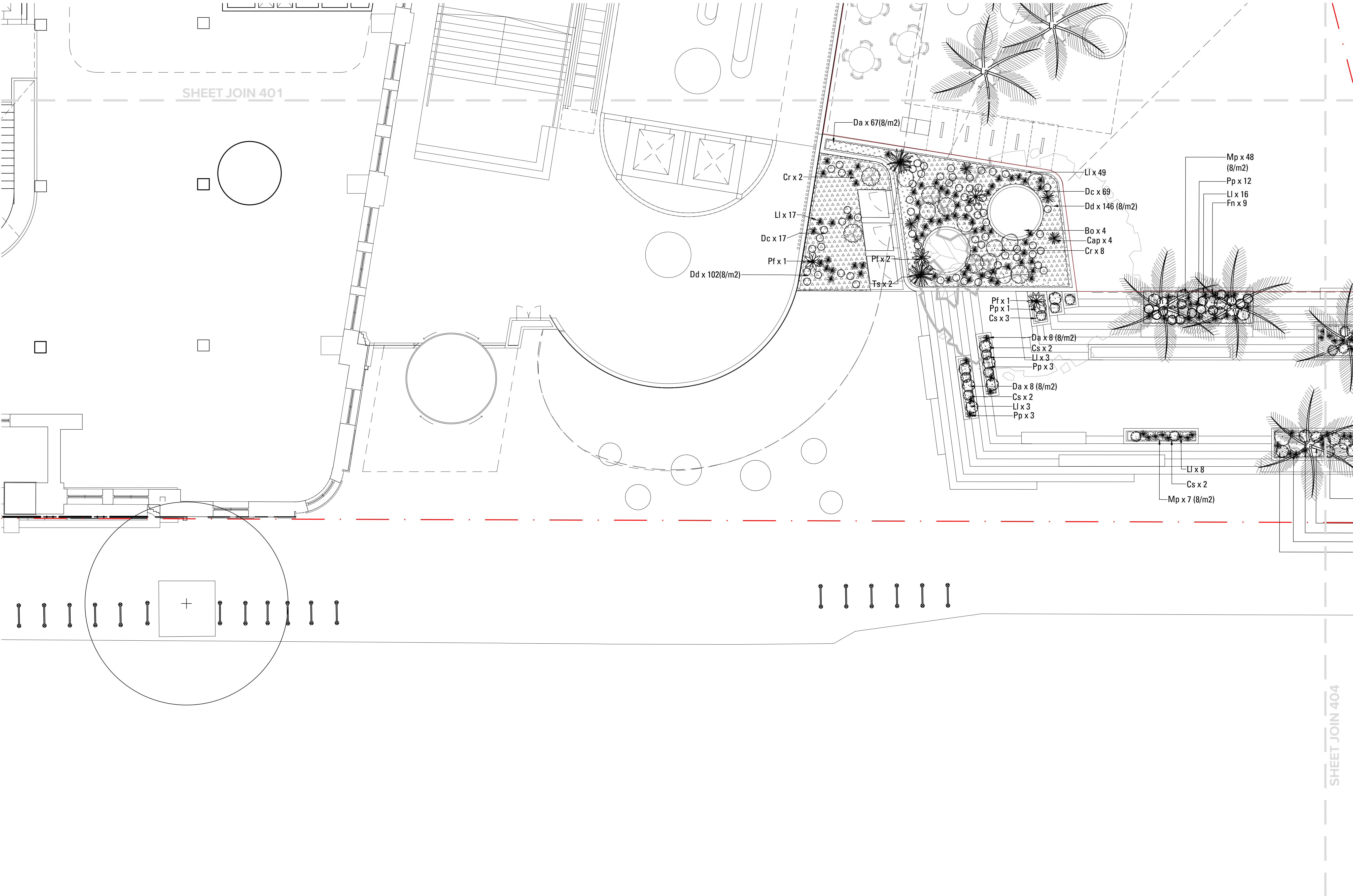
- LEGEND_SOFTWORKS
- EXISTING TREES TO BE RETAINED
Refer Landscape Specification
 - EXISTING TREES TO BE REMOVED
Refer Landscape Specification
 - FEATURE TREE PLANTING
Refer Landscape Specification
 - STREET TREE PLANTING
Refer Landscape Specification
 - SHRUB AND ACCENT PLANTING
Refer Landscape Specification
 - GROUNDCOVER PLANTING
Refer Landscape Specification
 - MATRIX PLANTING
Refer Landscape Specification





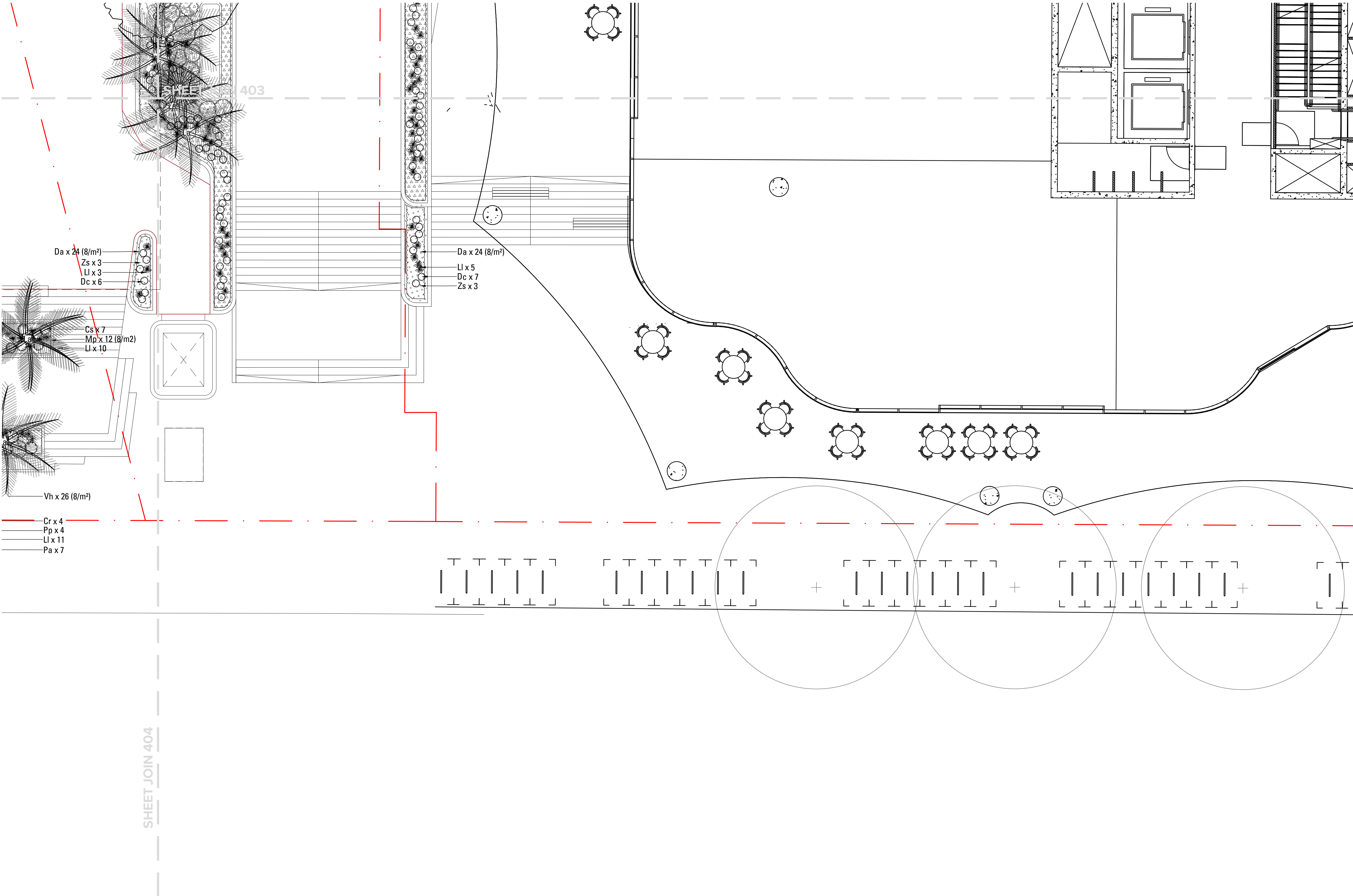
- LEGEND_SOFTWORKS
- EXISTING TREES TO BE RETAINED
Refer Landscape Specification
 - EXISTING TREES TO BE REMOVED
Refer Landscape Specification
 - FEATURE TREE PLANTING
Refer Landscape Specification
 - STREET TREE PLANTING
Refer Landscape Specification
 - SHRUB AND ACCENT PLANTING
Refer Landscape Specification
 - GROUNDCOVER PLANTING
Refer Landscape Specification
 - MATRIX PLANTING
Refer Landscape Specification





- LEGEND_SOFTWORKS
- EXISTING TREES TO BE RETAINED
Refer Landscape Specification
 - EXISTING TREES TO BE REMOVED
Refer Landscape Specification
 - FEATURE TREE PLANTING
Refer Landscape Specification
 - STREET TREE PLANTING
Refer Landscape Specification
 - SHRUB AND ACCENT PLANTING
Refer Landscape Specification
 - GROUNDCOVER PLANTING
Refer Landscape Specification
 - MATRIX PLANTING
Refer Landscape Specification





21-810 TOGA CENTRAL PLANT SCHEDULE					
CODE	BOTANIC NAME	COMMON NAME	MATURE SIZE (h x w) (m)	PROPOSED POT SIZE	QUANTITY
	TREES & PALMS				
Ac	<i>Angophora costata</i>	Sydney Red Gum	10x8	200L	3
Ep	<i>eucalyptus parramattensis</i>	drooping red gum	8x6	200L	1
La	<i>Livistona australis</i>	Cabbage Palm	20 x 6	75L	18
Xr	<i>Xanthorrhoea resinifera</i>	Grass Tree	3 x 1	75L	7
	SHRUBS & ACCENTS				
Bo	<i>Banksia oblongifolia</i>	Fern Leaf Banksia	2 x 1.5	140mm	18
Cr	<i>Correa reflexa</i>	Native fuchsia	3 x 1.5	150mm	24
Cs	<i>Crowea saligna</i>	Waxflower	1 x 0.8	140mm	18
Pf	<i>Pultenaea flexilis</i>	Yellow Pea	3 x 1.5	150mm	5
Ts	<i>Telopea speciosissima</i>	New South Wales Waratah	3 x 1.5	150mm	3
	GRASSES & RUSHES				
Cap	<i>Carex appressa</i>	Tall sedge	1 x 1	150mm	4
Dc	<i>Daniella caerulea</i>	Blue Flax Lily	0.6 x 0.6	150mm	171
Fn	<i>Ficina nodosa</i>	Knobby Club Rush	1 x 0.8	150mm	15
Ll	<i>Lomandra logifolia</i>	Mat Rush	1 x 0.6	150mm	263
Pa	<i>Pennisetum alopecuroides</i>	Swamp Foxtail	0.9 x 0. 9	150mm	4
Pp	<i>Poa poidormis</i>	Tussock Grass	1 x 1	150mm	25
	GROUNDCOVERS & CLIMBERS				
Cg	<i>Casuarina glauca</i>	Cousin It	0.15 x 1	140mm	50
Da	<i>Dichondra argentea</i>	Silver Falls	0.2 x spreading	140mm	211
Dd	<i>Distichlis distichophylla</i>	Salt- Grass	0.3 x 1	150mm	530
Mp	<i>Myoporum parvifolium</i>	Creeping Boobialla	0.15 x 1	150mm	65
Vh	<i>Viola hederacea</i>	Native Violet	0.2 x 0.5	150mm	26