

42 Raymond Avenue, Matraville, NSW, 2036

Landscape Documentation for State Significant Development Application



IMAGE TAKEN FROM NEARMAP 2021

Drawing Register

Dwg No.	Drawing Name
SSD-00	Landscape Cover Sheet
SSD-01	Landscape Masterplan
SSD-02	Ground Floor Detail Plan South
SSD-03	Ground Floor Detail Plan North
SSD-04	Level 1 Detail Plan
SSD-05	Landscape Sections
SSD-06	Specifications & Details
SSD-07	Planting Schedule & Imagery



SITE PLAN

SITE BOUNDARY
 LOT BOUNDARY
 NON-DEVELOPABLE SITE AREA (3, 337M²)
 DEVELOPABLE SITE AREA (19, 437M²)

Drawing Title:
Landscape Cover Sheet
DWG No:

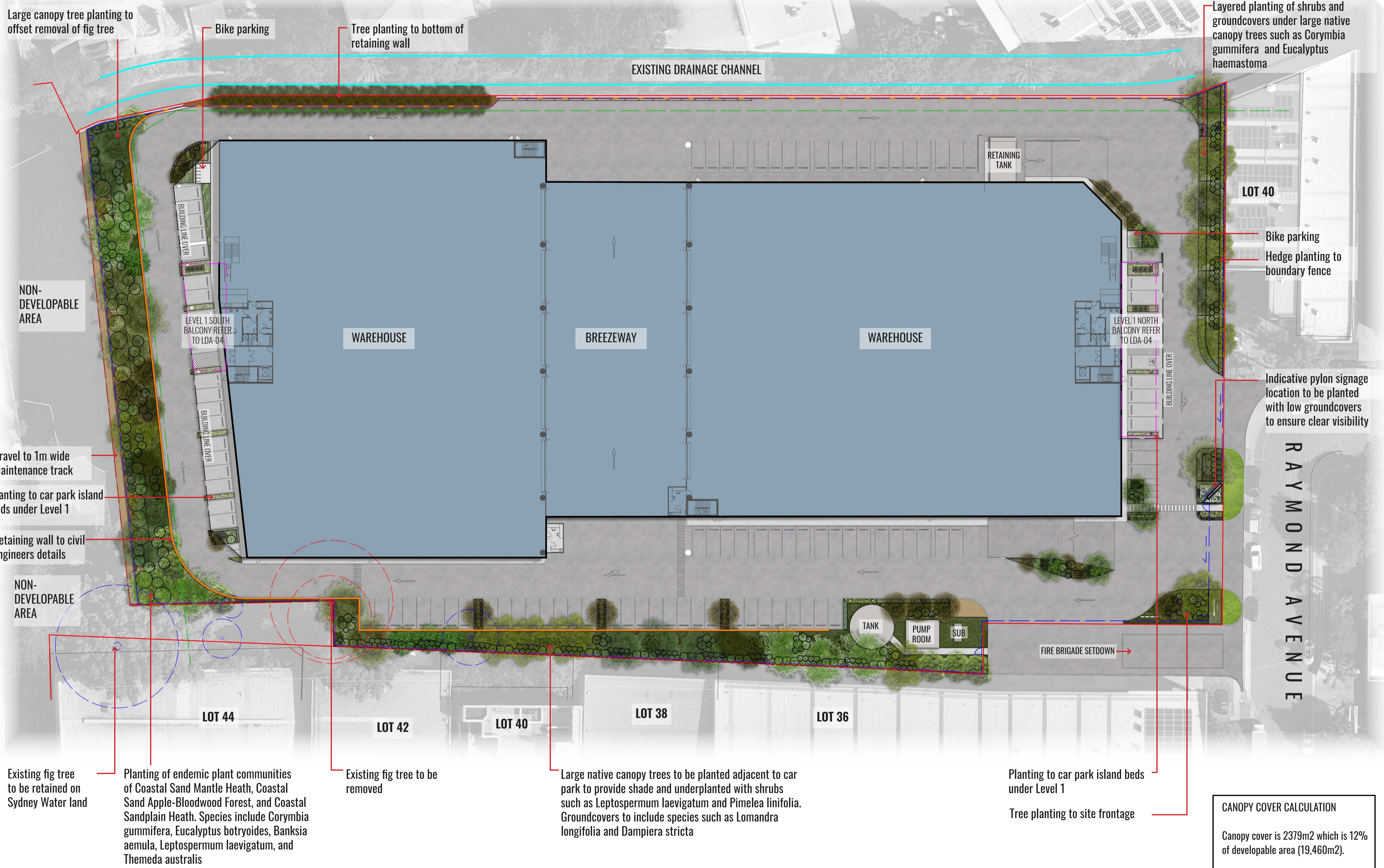
SSD-00

GEOSCAPES
LANDSCAPE ARCHITECTS
Suite 215, 284 Victoria Ave, Chatswood NSW 2067 Ph. (02) 9411 1485
www.geoscapes.com.au
ABN 84 620 205 781 ACN 620 205 781

Architect:
SBA
ARCHITECTS

Project Manager:
Hale

Scale:	Date:	Job Number:	North:	Revision					STATE SIGNIFICANT DEVELOPMENT	
N/A	06.07.22	2111102	N/A	Rev	Date	Description	Drawn	Checked		
				B	20.12.22	FOR SSD	KC	BG		
				C	25.02.22	FOR SSD	KC	BG		
				D	08.03.22	FOR SSD	PT	BG		
				E	06.07.22	FOR RTS	KC	BG		
Project:	42 Raymond Avenue Matraville, NSW 2036									



Drawing Title:
Landscape Masterplan
 DWG No:
SSD-01

GEOSCAPES
 LANDSCAPE ARCHITECTS
 Suite 215, 284 Victoria Ave, Chatswood NSW 2067 Ph. (02) 9411 1485
 www.geoscapes.com.au
 ABN 84 620 205 781 ACN 620 205 781

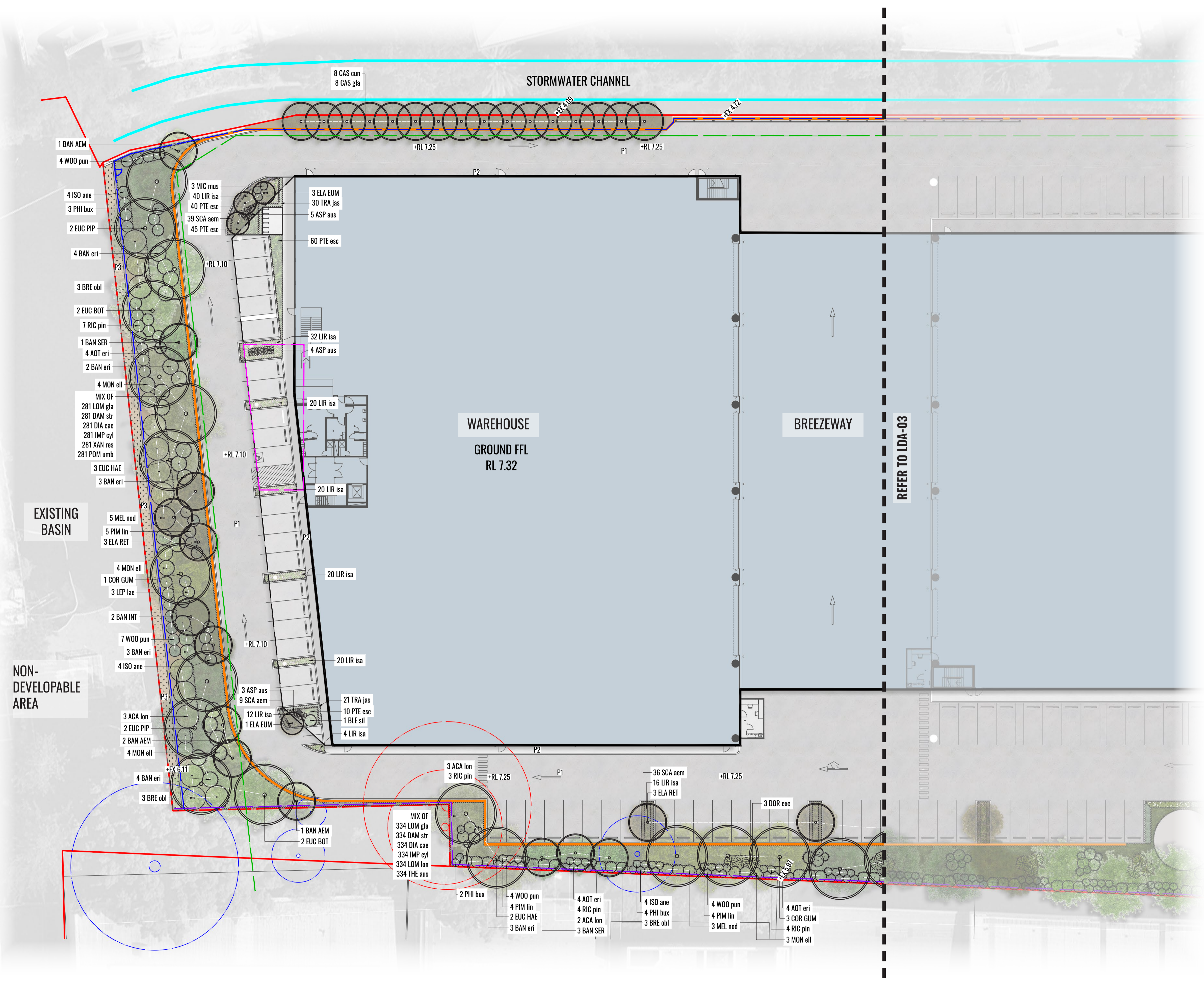
Architect:
SBA
 ARCHITECTS

Project Manager:
Hale

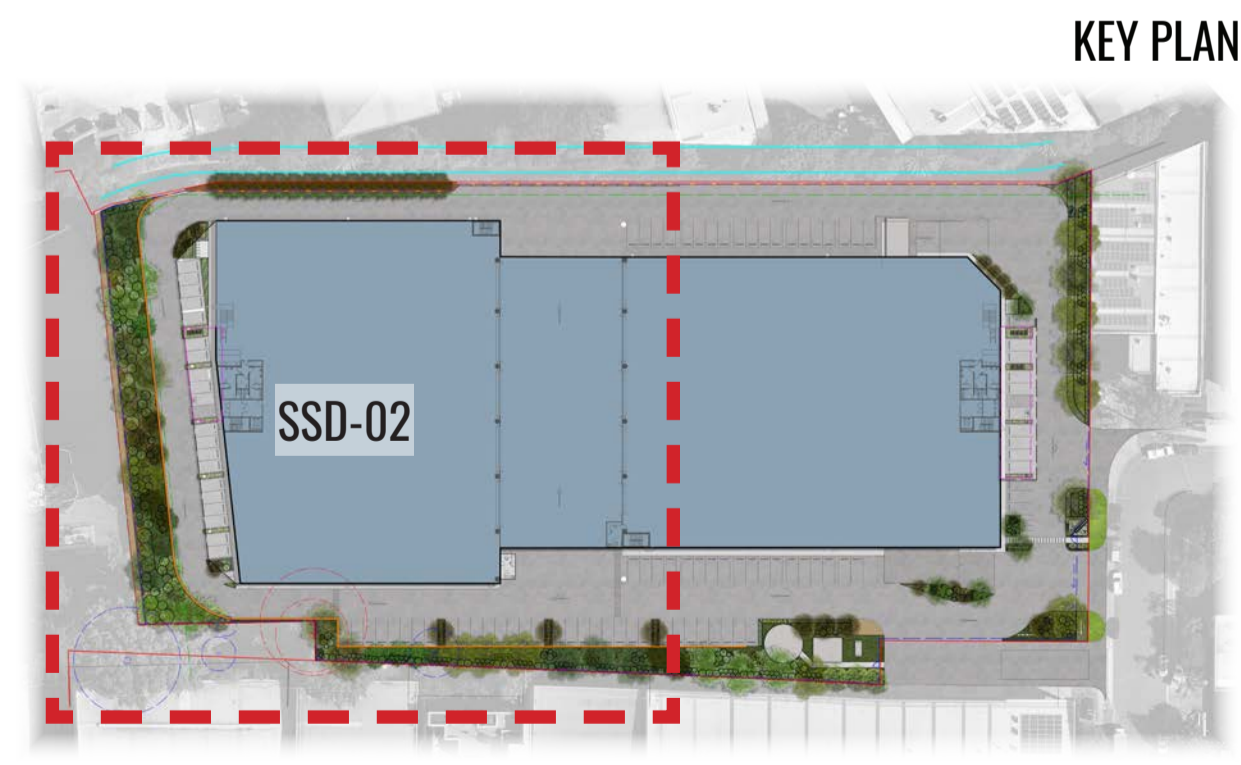
Scale:
 1:300 @ A1
 1:600 @ A3
 Date:
 06.07.22
 Job Number:
 2111102
 North:

 Project:
 42 Raymond Avenue
 Matraville, NSW 2036

Revision			STATE SIGNIFICANT DEVELOPMENT	
Rev	Date	Description	Drawn	Checked
B	20.12.22	FOR SSD	KC	BG
C	25.02.22	FOR SSD	KC	BG
D	08.03.22	FOR SSD	PT	BG
E	06.07.22	FOR RTS	KC	BG



- LEGEND**
- SITE BOUNDARY
 - LOT BOUNDARY
 - PROPOSED TREES
 - PROPOSED SHRUBS
 - ACCENT/FEATURE PLANTING
 - MASS HEDGE/SHRUB PLANTING
 - PROPOSED GROUNDCOVER PLANTING
 - RETAINING WALL TO ENGINEERS DETAILS
 - FENCE TYPE 1 TO ARCHITECTS DETAILS
 - FENCE TYPE 2 TO ARCHITECTS DETAILS
 - EXISTING STORMWATER CHANNEL
 - PROPOSED PYLON SIGN LOCATION
 - BUILDING ABOVE
 - BALCONY ABOVE
 - P1 HARDSTAND
 - P2 FOOTPATHS
 - P3 GRAVEL
 - EXISTING TREE TO BE RETAINED REFER TO ARBORIST REPORT
 - EXISTING TREE TO BE REMOVED REFER TO ARBORIST REPORT
 - PROPOSED INDICATIVE SEWER LOCATION TO ENGINEERS DETAILS



Drawing Title:
Ground Floor Detail Plan South
DWG No:
SSD-02

GEOSCAPES
LANDSCAPE ARCHITECTS
Suite 215, 284 Victoria Ave, Chatswood NSW 2067 Ph. (02) 9411 1485
www.geoscapes.com.au
ABN 84 620 205 781 ACN 620 205 781

Architect:
SBA ARCHITECTS

Project Manager:
Hale

Scale:
1:250 @ A1
1:500 @ A3

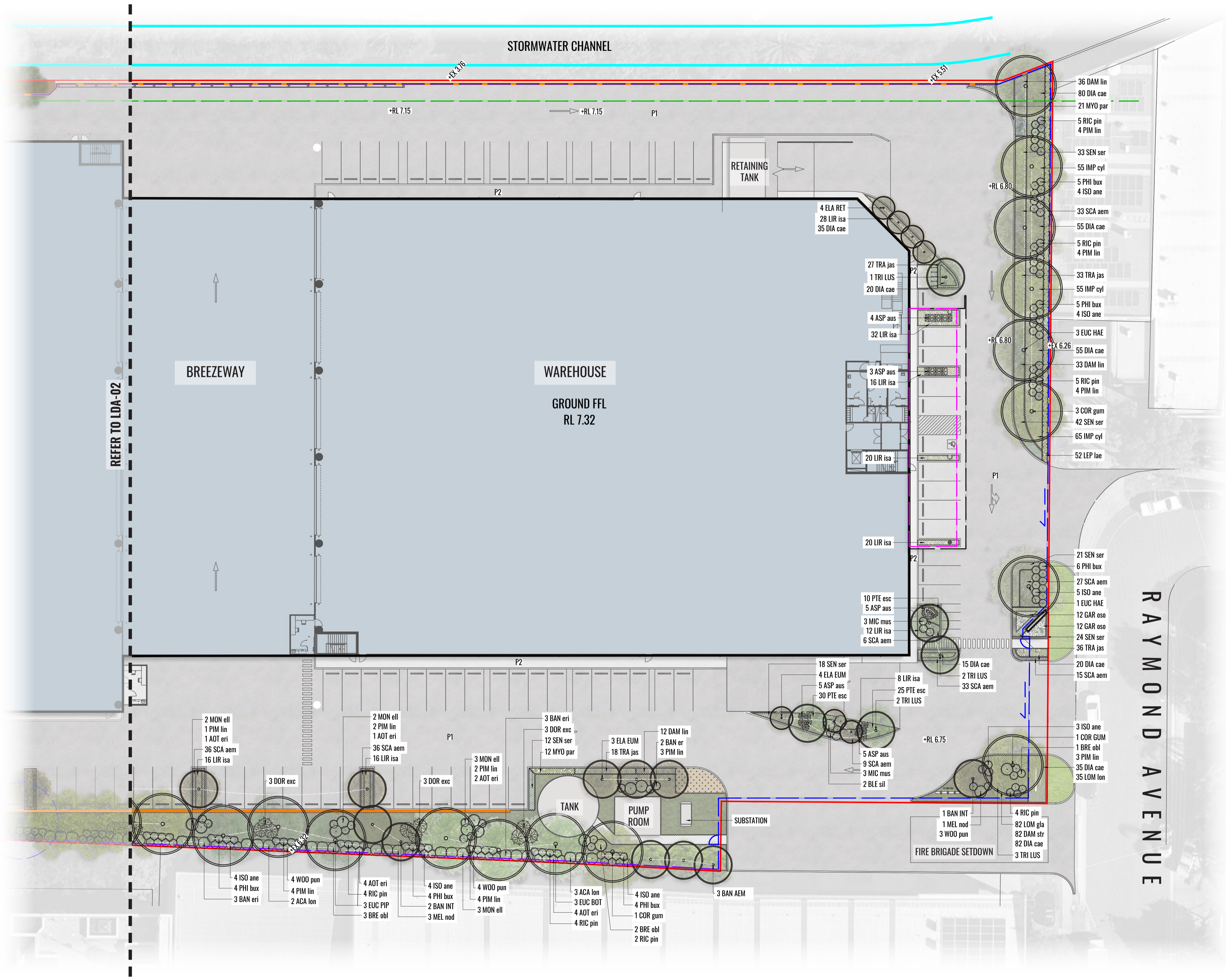
Date:
06.07.22

Job Number:
2111102

North:
↑

Project:
42 Raymond Avenue
Matraville, NSW 2036

Revision			STATE SIGNIFICANT DEVELOPMENT	
Rev	Date	Description	Drawn	Checked
B	20.12.22	FOR SSD	KC	BG
C	25.02.22	FOR SSD	KC	BG
D	08.03.22	FOR SSD	PT	BG
E	06.07.22	FOR RTS	KC	BG



- LEGEND**
- SITE BOUNDARY
 - LOT BOUNDARY
 - PROPOSED TREES
 - PROPOSED SHRUBS
 - ACCENT/FEATURE PLANTING
 - MASS HEDGE/SHRUB PLANTING
 - PROPOSED GROUNDCOVER PLANTING
 - RETAINING WALL TO ENGINEERS DETAILS
 - FENCE TYPE 1 TO ARCHITECTS DETAILS
 - FENCE TYPE 2 TO ARCHITECTS DETAILS
 - EXISTING STORMWATER CHANNEL
 - PROPOSED PYLON SIGN LOCATION
 - BUILDING ABOVE
 - BALCONY ABOVE
 - P1 HARDSTAND
 - P2 FOOTPATHS
 - P3 GRAVEL
 - EXISTING TREE TO BE RETAINED
REFER TO ARBORIST REPORT
 - EXISTING TREE TO BE REMOVED
REFER TO ARBORIST REPORT
 - PROPOSED INDICATIVE SEWER
LOCATION TO ENGINEERS DETAILS



Drawing Title:
Ground Floor Detail Plan North
DWG No:
SSD-03

GEOSCAPES
LANDSCAPE ARCHITECTS
Suite 215, 284 Victoria Ave, Chatswood NSW 2067 Ph. (02) 9411 1485
www.geoscapes.com.au
ABN 84 620 205 781 ACN 620 205 781

Architect:
SBA
ARCHITECTS

Project Manager:
Hale

Scale:
1:250 @ A1
1:500 @ A3
Date:
06.07.22
Job Number:
2111102
North:
Project:
42 Raymond Avenue
Matraville, NSW 2036

Revision			STATE SIGNIFICANT DEVELOPMENT	
Rev	Date	Description	Drawn	Checked
B	20.12.22	FOR SSD	KC	BG
C	25.02.22	FOR SSD	KC	BG
D	08.03.22	FOR SSD	PT	BG
E	06.07.22	FOR RTS	KC	BG

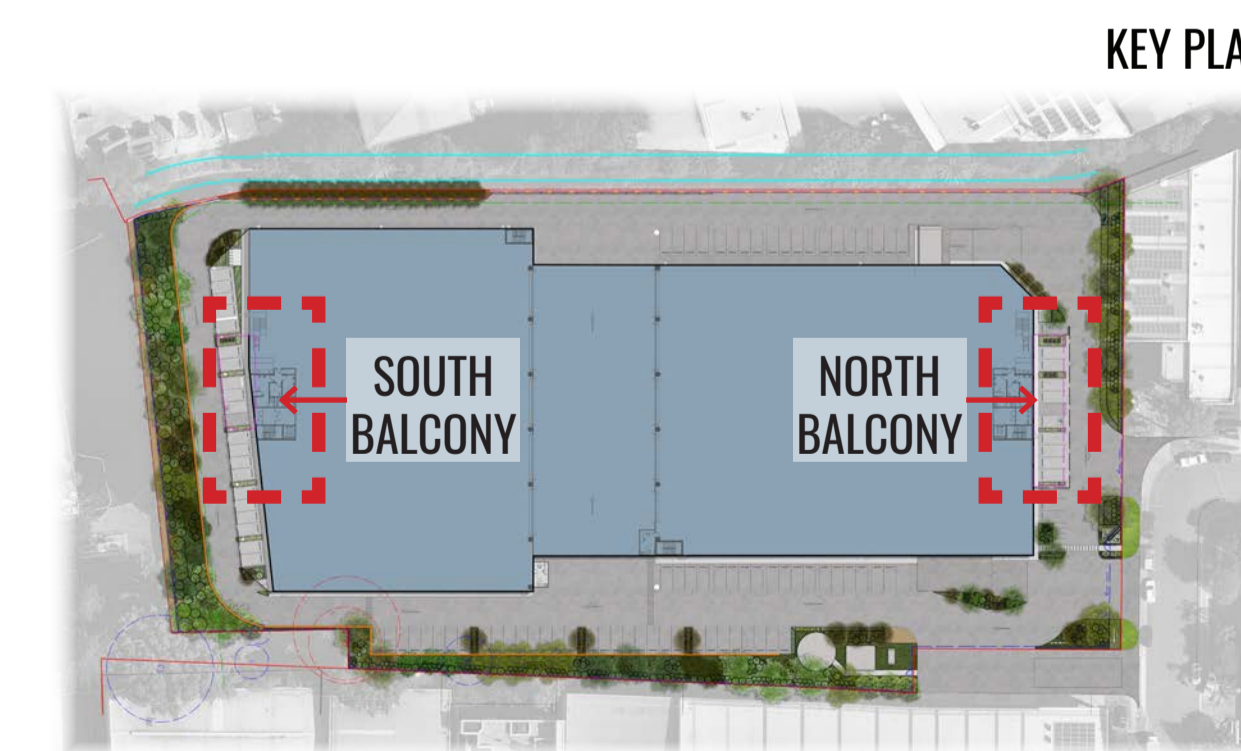
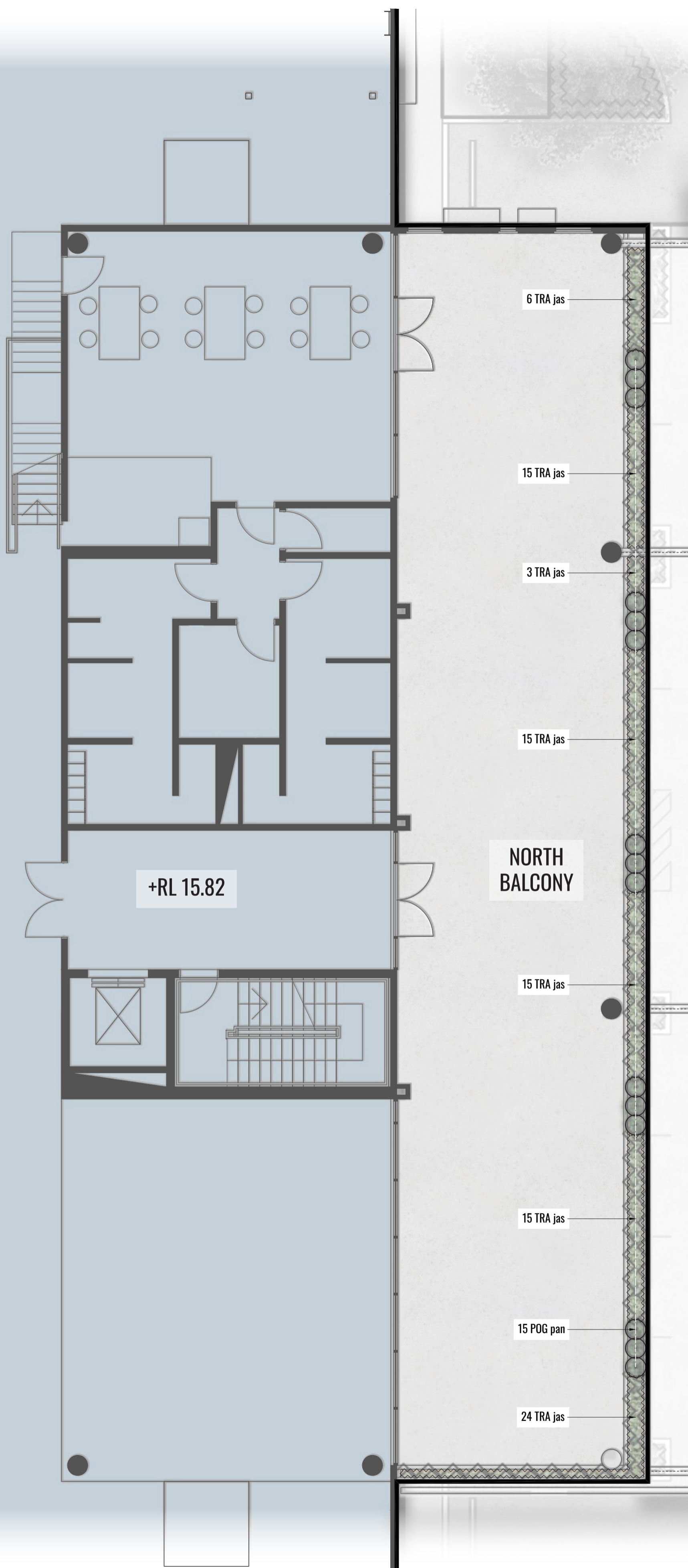
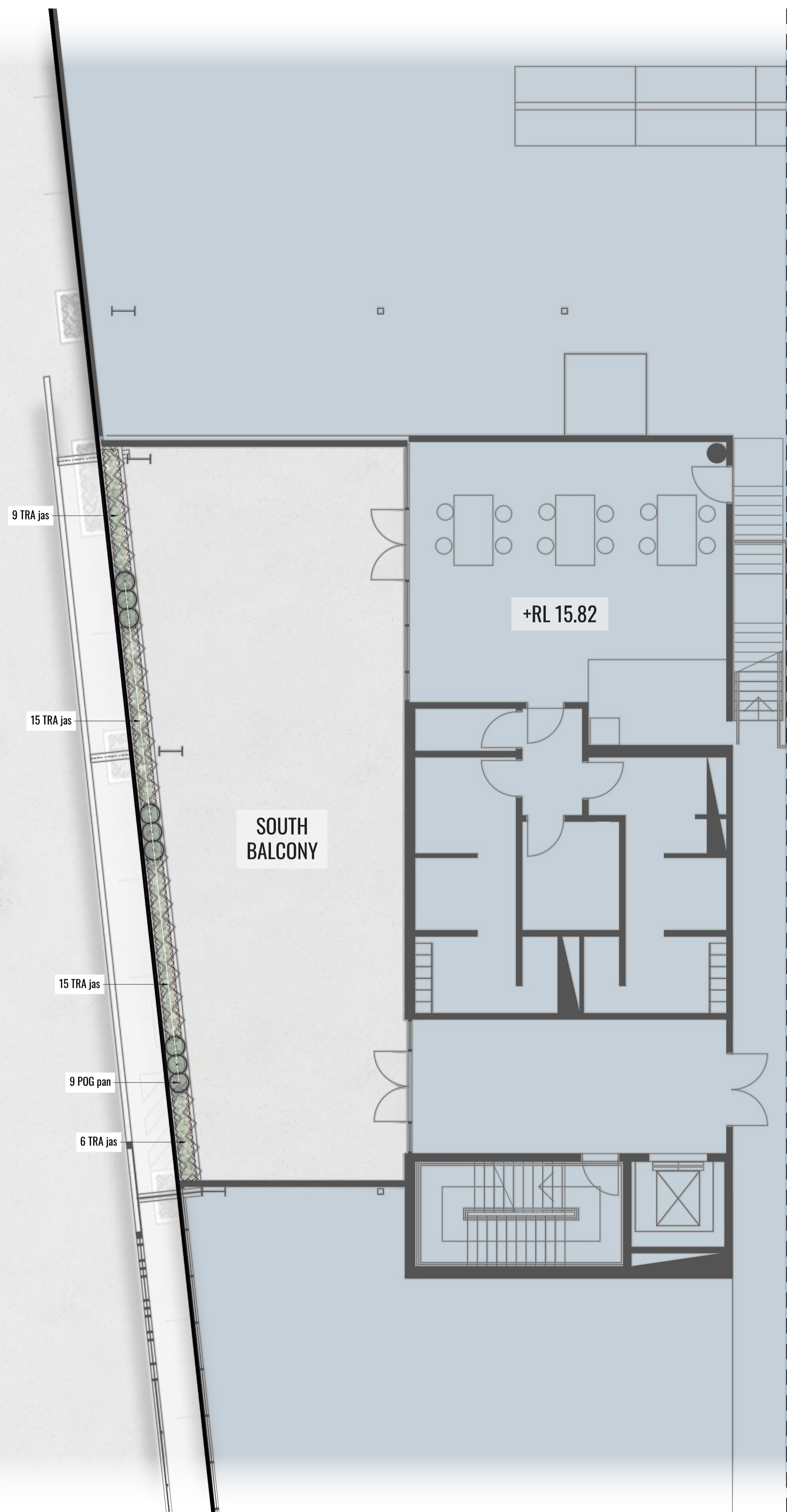
LEGEND



PROPOSED SHRUBS



PROPOSED GROUNDCOVER PLANTING



Drawing Title:
Level 1 Detail Plan
DWG No:

SSD-04

GEOSCAPES
LANDSCAPE ARCHITECTS

Suite 215, 284 Victoria Ave, Chatswood NSW 2067 Ph. (02) 9411 1485
www.geoscapes.com.au
ABN 84 620 205 781 ACN 620 205 781

Architect:



Project Manager:



Scale:
1:75 @ A1
1:150 @ A3

Date:
06.07.22

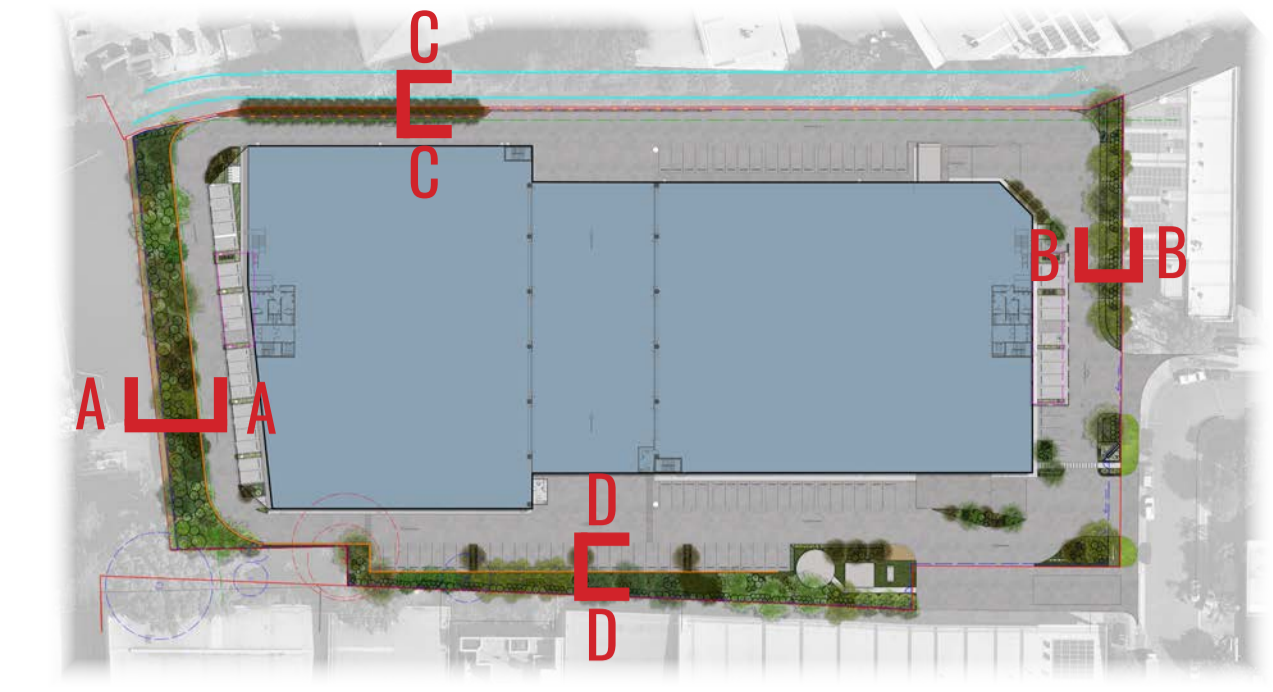
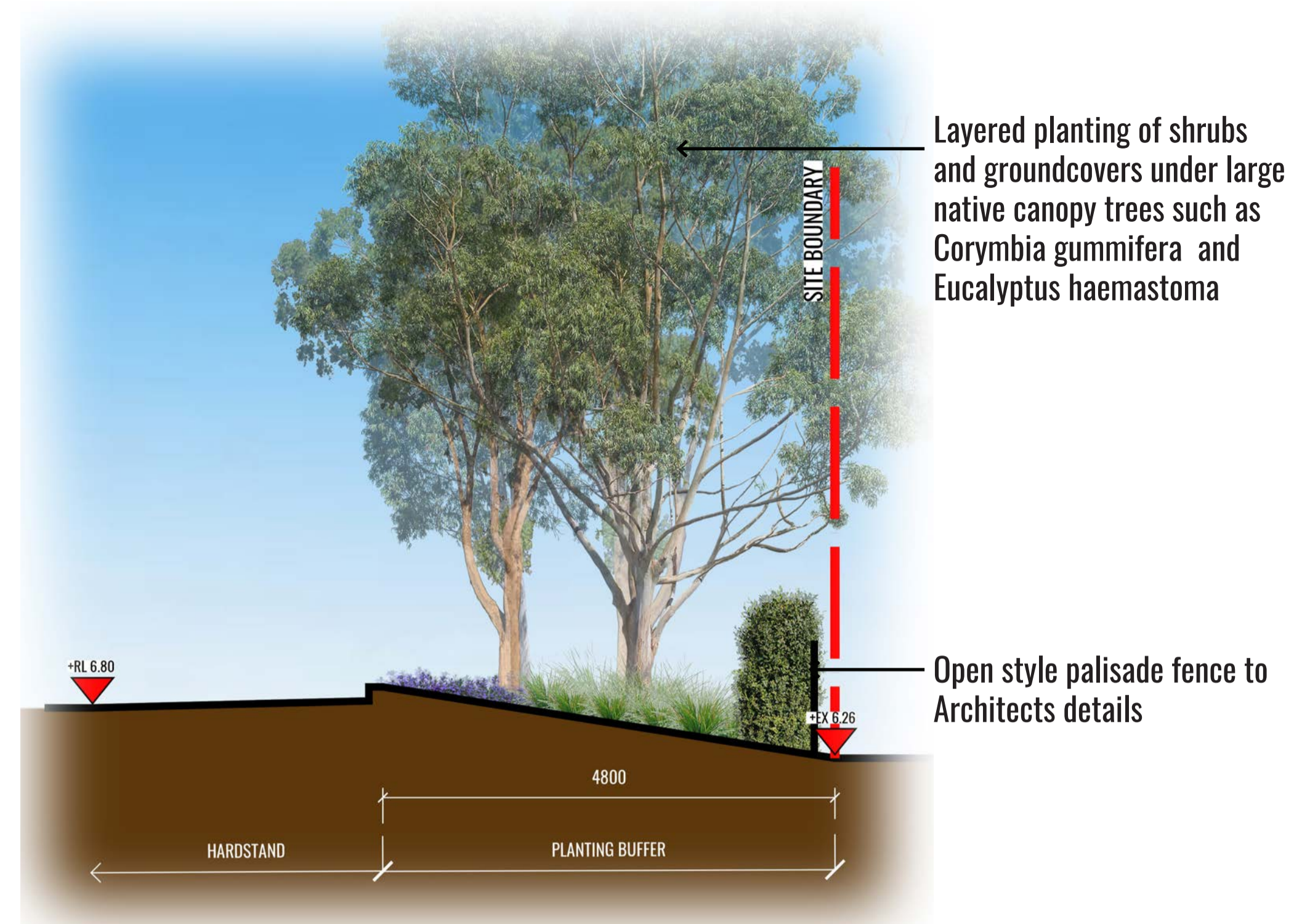
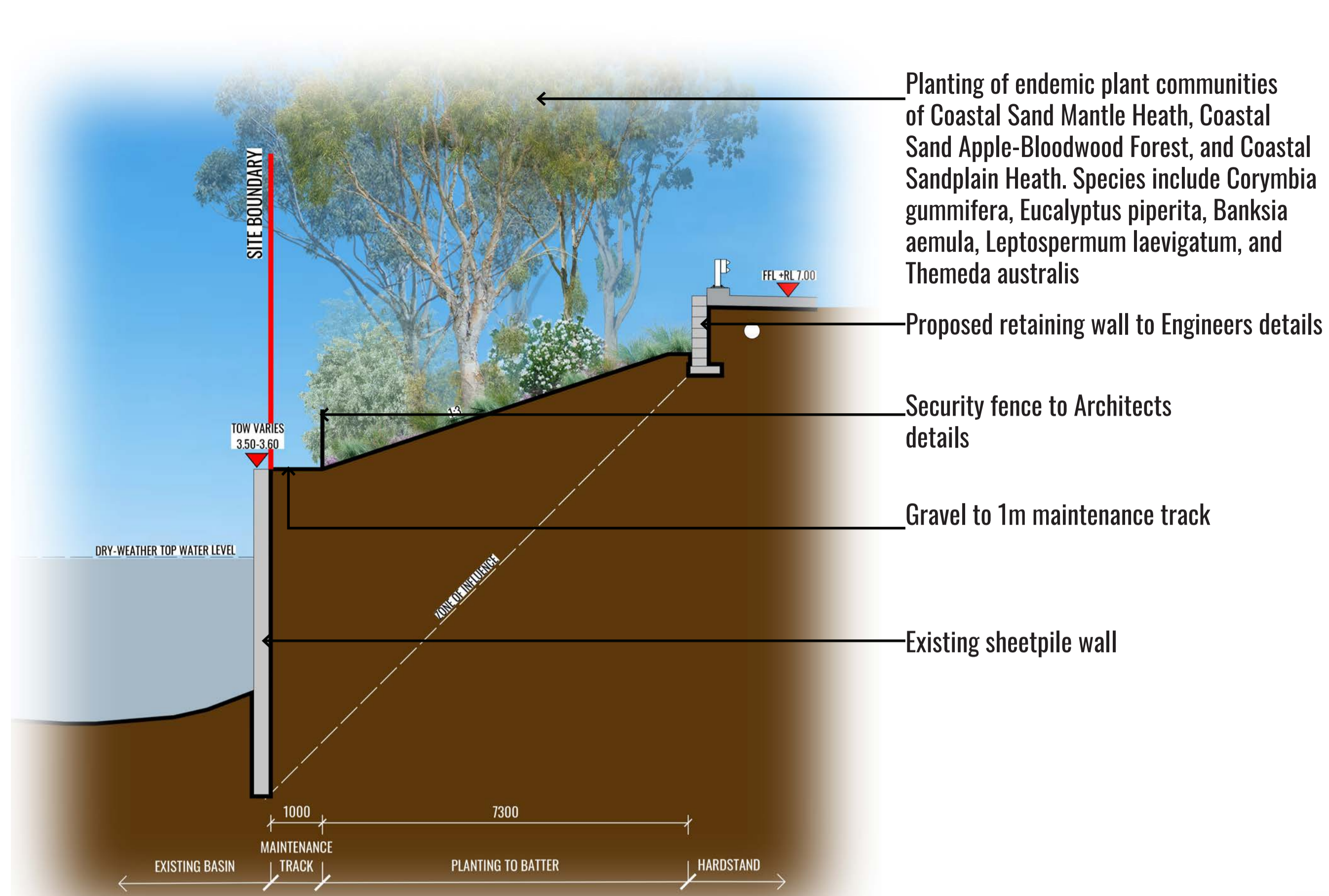
Job Number:
2111102

North:

Project:

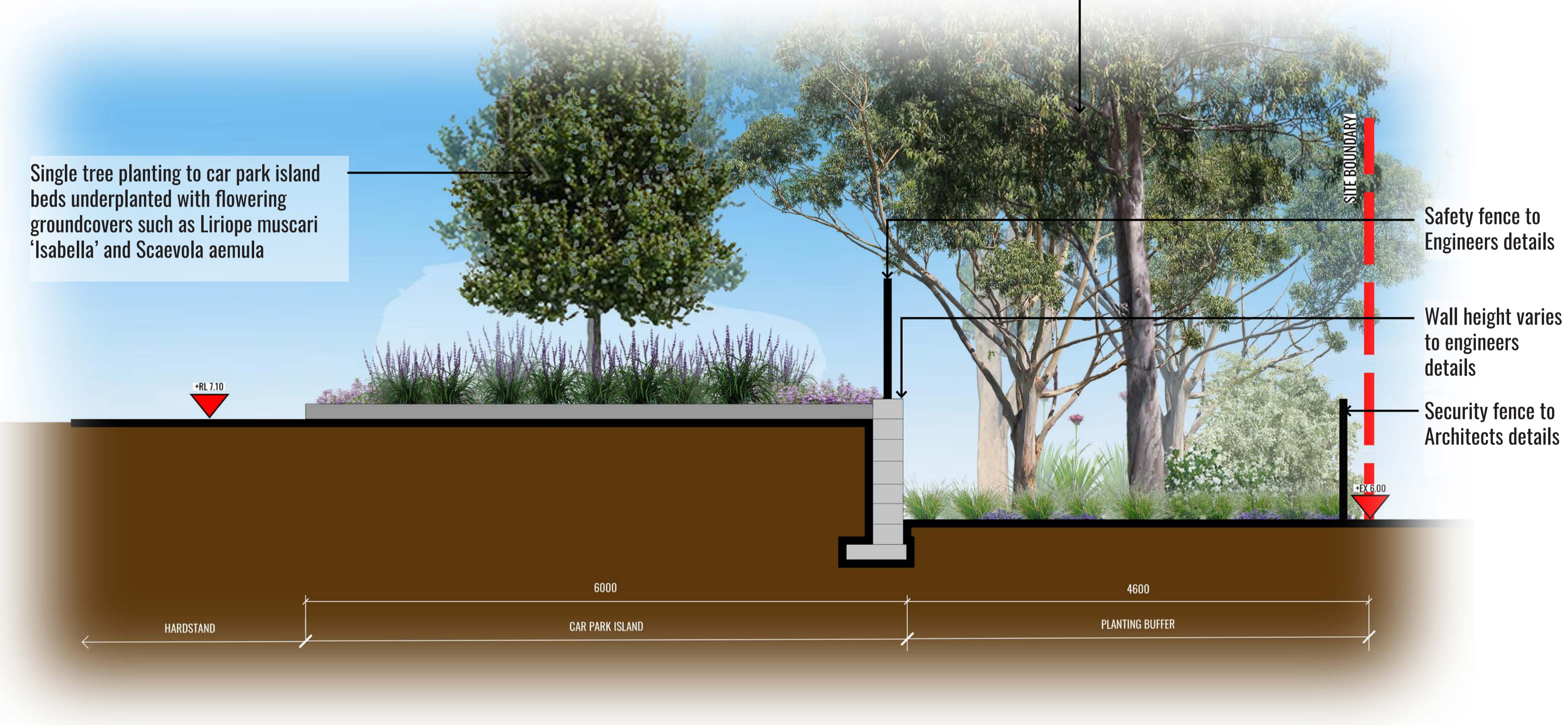
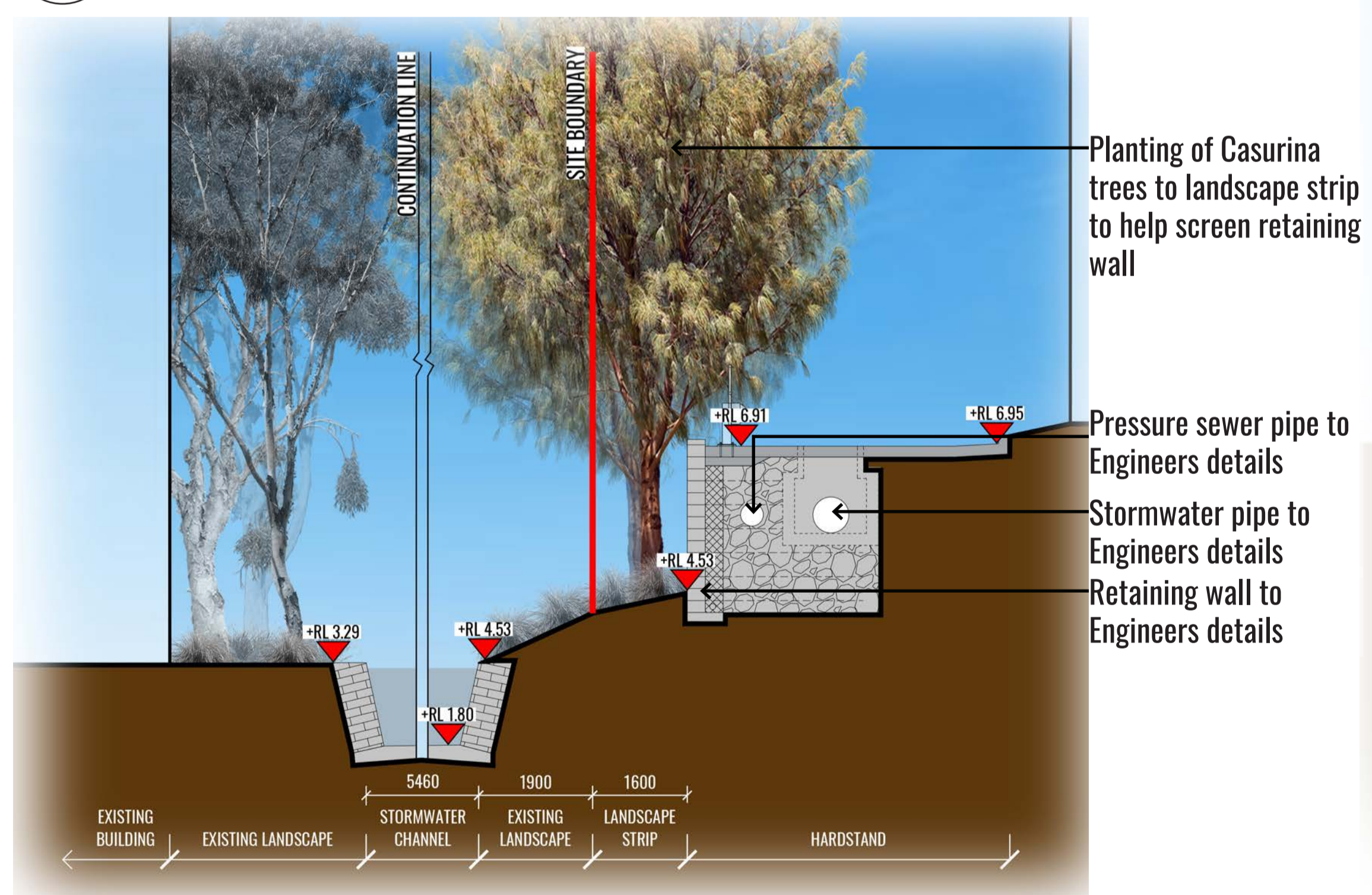
42 Raymond Avenue
Matraville, NSW 2036

Revision			STATE SIGNIFICANT DEVELOPMENT	
Rev	Date	Description	Drawn	Checked
B	20.12.22	FOR SSD	KC	BG
C	25.02.22	FOR SSD	KC	BG
D	08.03.22	FOR SSD	PT	BG
E	06.07.22	FOR RTS	KC	BG



SECTION BB
SCALE 1:50

SECTION AA
SCALE 1:75



SECTION DD
SCALE 1:30

SECTION CC
SCALE 1:75

Drawing Title:
Landscape Sections
DWG No:
SSD-05

GEOSCAPES
LANDSCAPE ARCHITECTS
Suite 215, 284 Victoria Ave, Chatswood NSW 2067 Ph. (02) 9411 1485
www.geoscapes.com.au
ABN 84 620 205 781 ACN 620 205 781

Architect:
SBA ARCHITECTS

Project Manager:
Hale

Scale: AS SHOWN @ A1
Date: 06.07.22
Job Number: 2111102
North: N/A
Project: 42 Raymond Avenue
Matraville, NSW 2036

Revision			STATE SIGNIFICANT DEVELOPMENT	
Rev	Date	Description	Drawn	Checked
B	20.12.22	FOR SSD	KC	BG
C	25.02.22	FOR SSD	KC	BG
D	08.03.22	FOR SSD	PT	BG
E	06.07.22	FOR RTS	KC	BG

MAINTENANCE PLAN

Maintenance shall mean the care and maintenance of the landscape works by accepted horticultural practice as rectifying any defects that become apparent in the landscape works under normal use. The landscape contractor shall attend the site on a **weekly basis** to maintain the landscape works commencing from practical completion.

Rubbish Removal

The Landscape Contractor shall undertake rubbish removal from the site on a **weekly basis** to ensure the site remains in tidy condition.

Weed Eradication

Weed growth that may occur in grassed, planted or mulched areas is to be removed using environmentally acceptable methods i.e. non-residual glyphosate herbicide (e.g. 'Roundup', applied in accordance with the manufacturer's direction.

Tree Replacement

Trees shall show signs of healthy vigorous growth and be free from disease and not exhibit signs of stress prior to handover to the client. Any trees or plant that die or fail to thrive, or are damaged or stolen will be replaced. Replacement material shall have the initial maintenance period extended in accordance with the landscape contract conditions. Trees and plant materials shall be equal to the minimum requirements of species specified and approved material delivered to site. Should the condition decline from the approved sample the Superintendent reserves the right to reject the tree / plants. Frequency: as required.

Stakes

Adjust and/or replace stakes and ties where required. Remove staking and guying when instructed by the Superintendent

Pruning

Selective pruning may be required during the establishment period to promote a balanced canopy structure. These activities shall be carried out to the best horticultural and industry practice. All pruned material is to be removed from site.

Mulched Surfaces

All planter beds and garden areas shall have a minimum depth of 75mm organic mulch. All mulch is to be free of deleterious matter such as soil, weeds, sticks and should conform to AS 4454. Mulched surfaces are to be kept clean and tidy and free of any deleterious material and foreign matter. Reinstatement depths to a uniform level of 75mm with mulch as specified, mulch to be free of any wood material impregnated with CCA or similar toxic treatment. Top up mulch levels prior to handover to client & estate management. Organic mulch is not to be used within 1m of a building. Use pebble mulch in these areas instead.

Watering

Implement an appropriate hand watering regime in areas not irrigated in association with current watering programme to maintain plant health and vigour. The program shall reflect seasonal conditions and plant species. Frequency: Weekly or as required.

Soil In Natural Ground

Non-Australian native garden beds to have soil installed consisting of 50% existing site topsoil and 50% new topsoil equal or equivalent to 'Organic Garden Mix' as supplied by Australian Native Landscapes. Australian native garden beds to have soil installed consisting of 50% existing site topsoil and 50% new topsoil equal or equivalent to 'Native Low 'P' Mix' as supplied by Australian Native Landscapes. Soil to conform to AS4419 refer to typical detail.

Pest and Disease Control

The Landscape Contractor shall spray for pests and disease infestations when the pest and fungal attack has been positively identified and when their populations have increased to a point that will become detrimental to plant growth. Apply all pesticides to manufacturer's directions. Frequency: weekly inspection

Fertilising

Generally check for signs of nutrient deficiencies (yellowing of leaves, failure to thrive), and adapt fertiliser regime to suit. Fertiliser should be applied at the beginning and the end of the (summer) growing season.

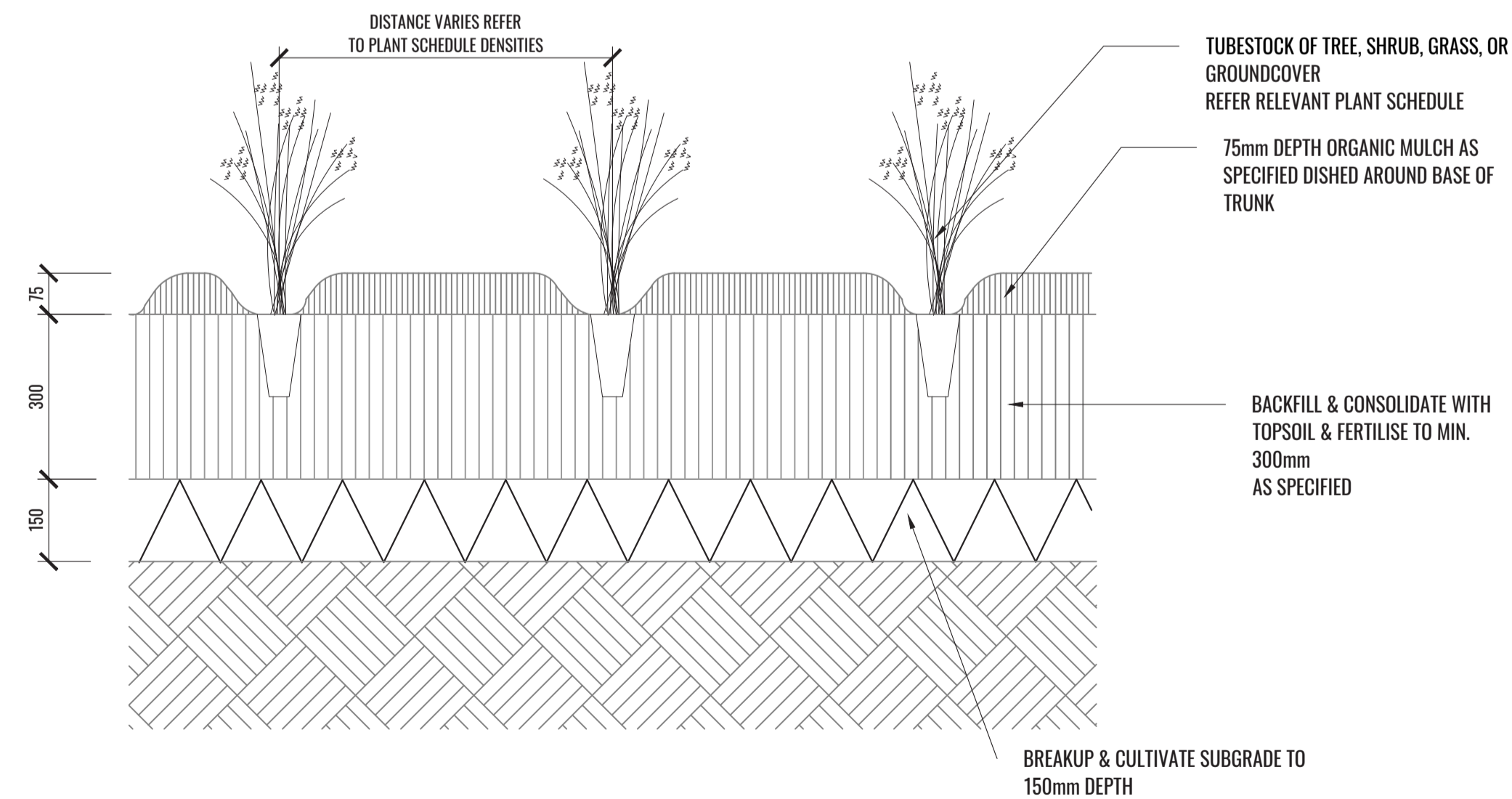
Irrigation

A sub surface dripper style, electrically automated self timed irrigation system is recommended to be supplied to all garden bed areas and planter container. Regular checks are to be made to ensure continued successful operation. The Landscape Contractor shall be responsible for coordination and engagement of a specialist irrigation designer and installation contractor to design, supply and install an automatic subterranean drip irrigation system to all raised planter beds.

The irrigation system will need to provide designated landscaped areas with enough water for vigorous healthy plant growth. As a general rule landscaped areas will need 20-25mm, species dependant, of water per week. The landscape Contractor will need to monitor natural rainfall using a rain switch in order to set irrigation flow rates accordingly on a monthly basis.

Standards

All grown or purchased plant stock must conform to all the conditions and requirements given in NATSPEC Guide: Specifying Trees. Soils to be in accordance with AS4419, mulching composts and conditioners to be in accordance with AS4454. Soils should conform to best practice specifications as listed in the Landscape Soils Handbook (Simon Leake & Elke Haeg 2017).

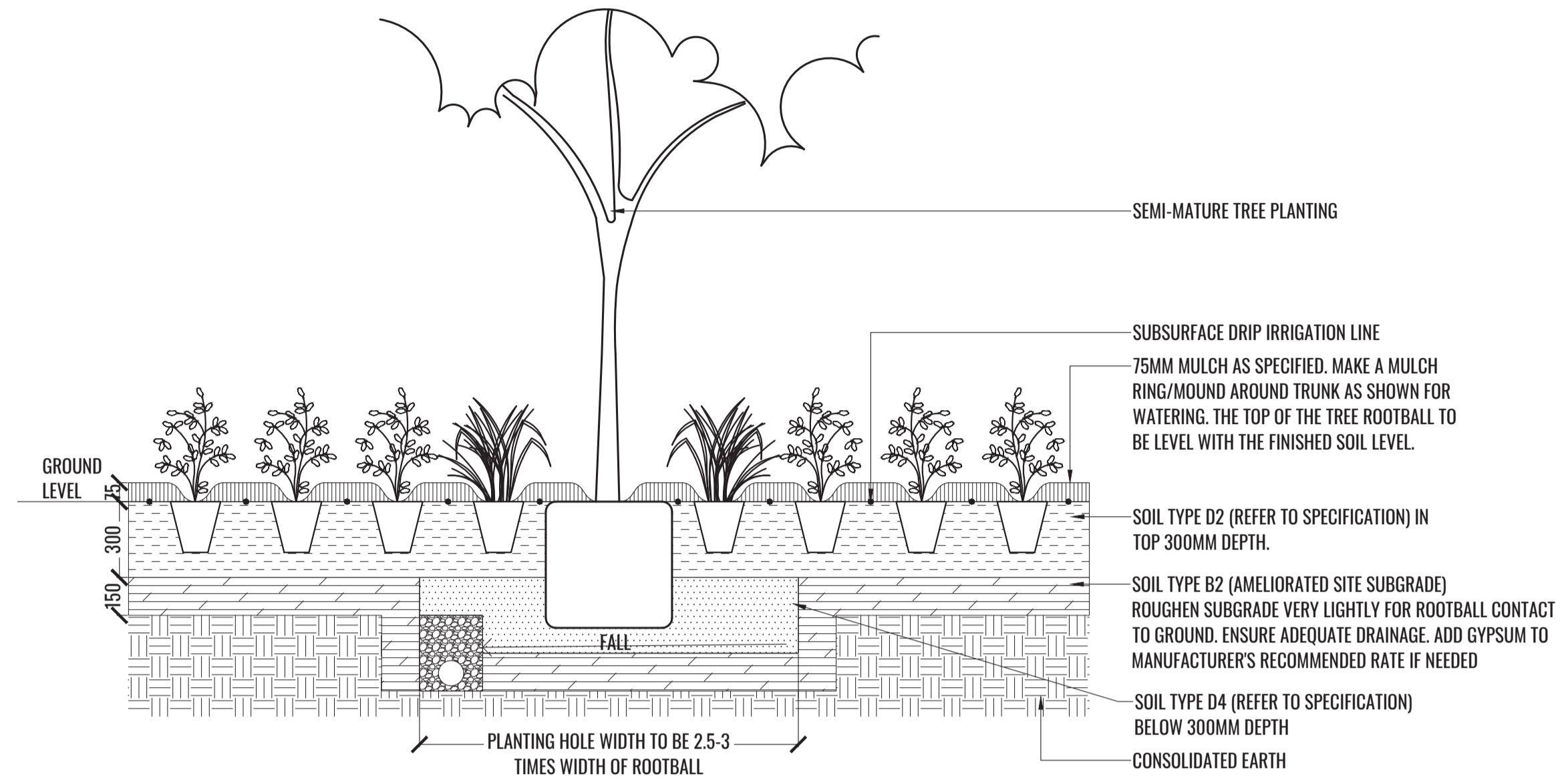


1 TYPICAL TUBESTOCK PLANTING DETAIL

SCALE 1:10

TYPICAL LANDSCAPE DETAILS

TREE/SHRUB SIZE AND QUALITY TO BE TO NATSPEC STANDARD. SPECIES IS TO BE AS PER PLAN AND PLANT SCHEDULE. ENSURE ONLY HEALTHY AND VIGOROUS, DISEASE FREE, WELL MAINTAINED PLANTS ARE USED. TAKE CARE TO ENSURE FOLIAGE, BRANCHES, TRUNKS AND ROOT CROWNS ARE NOT DAMAGED BEFORE, DURING AND AFTER PLANTING. ENSURE OPTIMUM MAINTENANCE AND ESTABLISHMENT OF TREES/SHRUBS OCCURS AS SOON AS THEY ARE AT SITE



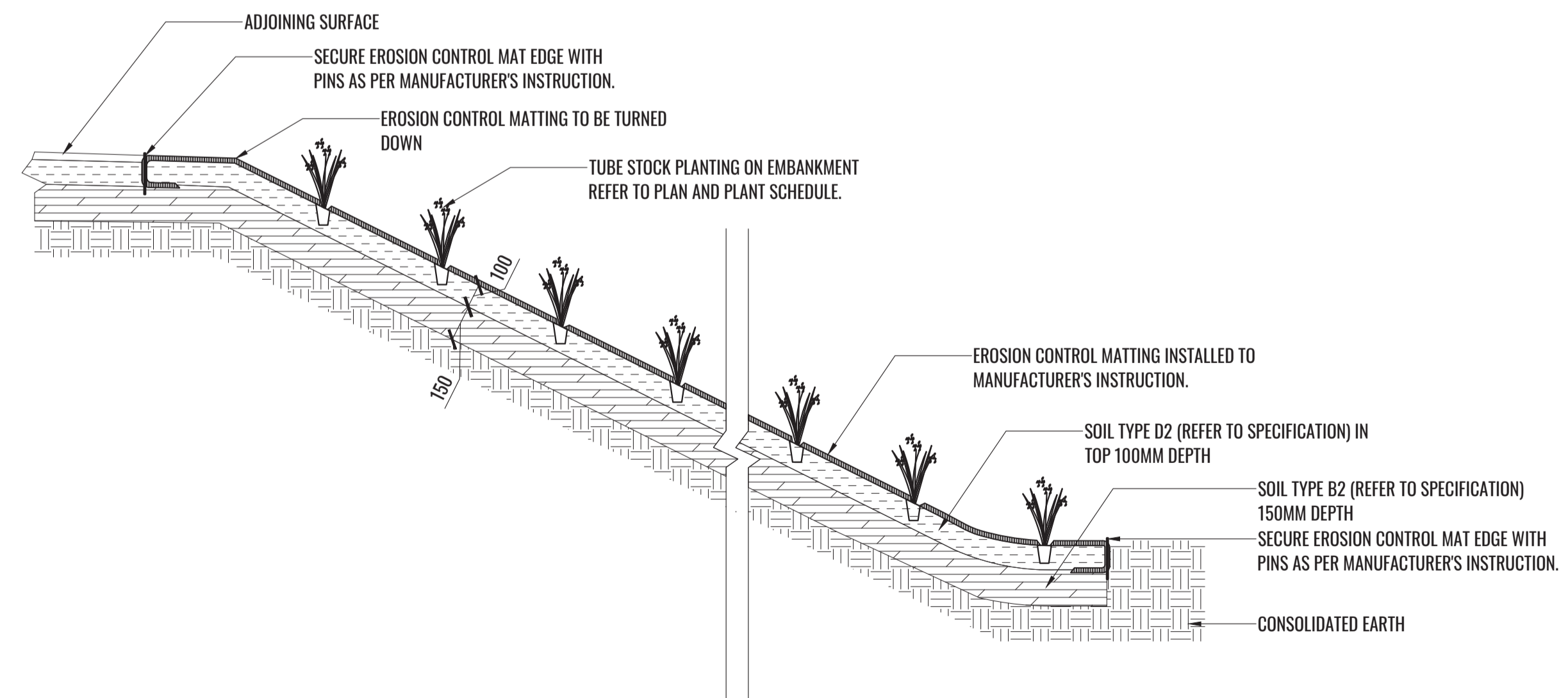
THOROUGHLY SOAK THE ROOTBALL OF TREE WITH FRESH WATER BEFORE TAKING OFF POT OR BAG. WHEN PLANTING HOLE IS COMPLETE USE A SHARP SPADE TO SHAVE OFF 20-50MM OF THE SIDES AND BASE OF ROOTBALL (TO ROOD PRUNE IT) BEFORE CAREFULLY PLACING INTO PLANTING HOLE. IF NORTH IS MARKED ON THE TREE, ENSURE ORIENTATION IS CORRECT WITH NORTH MARKING TO THE NORTH.

- REMOVE ANY STAKES, TIES AND LABELS. WATER ROOTBALL THOROUGHLY.
- TOP OF ROOTBALL TO FINISH FLUSH WITH TOP OF SOIL

2 MASS PLANTING AND TREE DETAIL

TYPICAL SECTION

SCALE 1:20



3 TYPICAL SOUTHERN EMBANKMENT DETAIL

TYPICAL SECTION

SCALE 1:20

Drawing Title:
Specifications & Details
DWG No: **SSD-06**

GEOSCAPES
LANDSCAPE ARCHITECTS
Suite 215, 284 Victoria Ave, Chatswood NSW 2067 Ph. (02) 9411 1485
www.geoscapes.com.au
ABN 84 620 205 781 ACN 620 205 781

Architect:
SBA
ARCHITECTS

Project Manager:
Hale

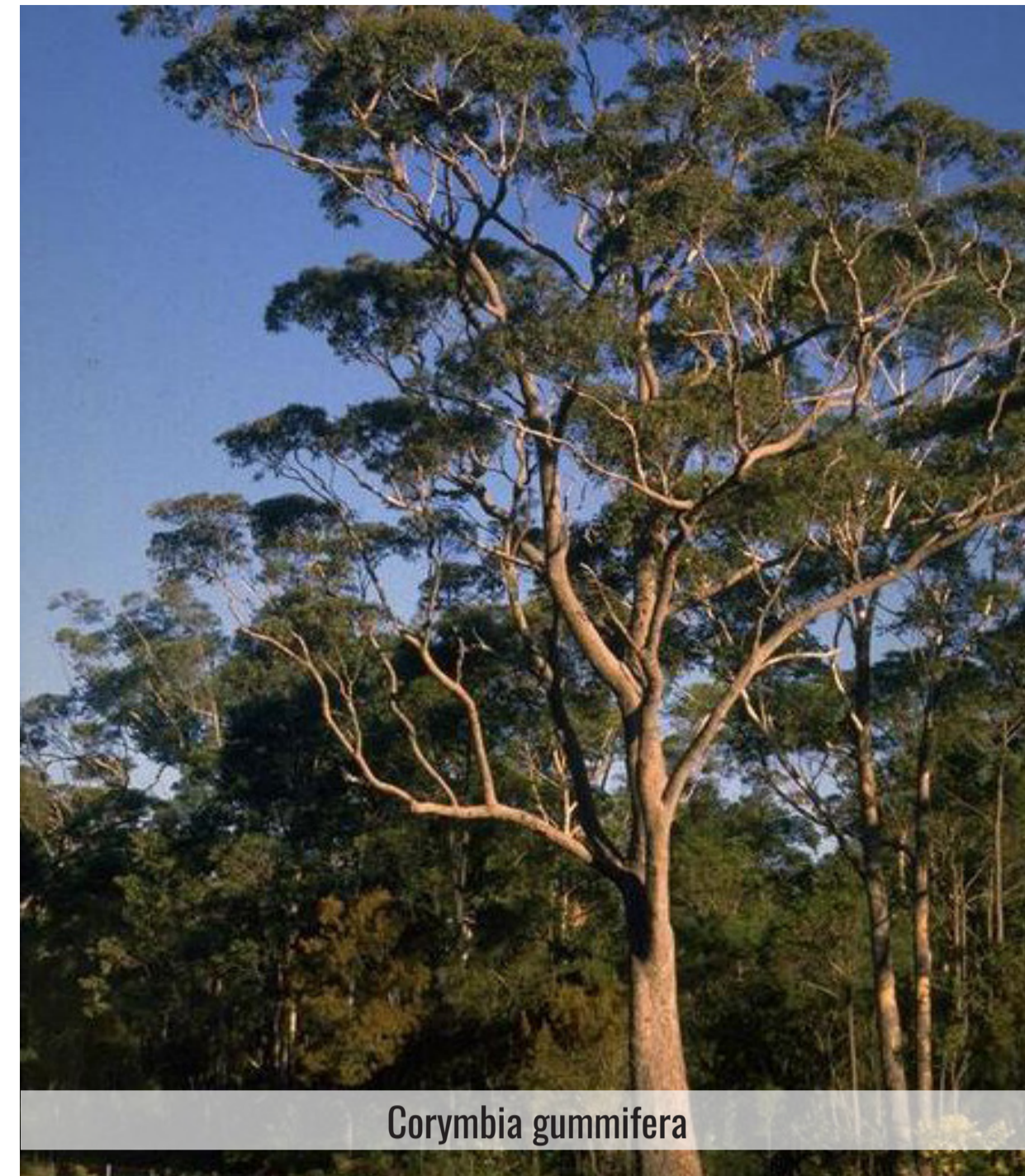
Scale:	Date:	Job Number:	North:	Revision		STATE SIGNIFICANT DEVELOPMENT		
N/A	06.07.22	2111102	N/A	Rev	Date	Description	Drawn	Checked
Project:	42 Raymond Avenue Matrville, NSW 2036			B	20.12.22	FOR SSD	KC	BG
				C	25.02.22	FOR SSD	KC	BG
				D	08.03.22	FOR SSD	PT	BG
				E	06.07.22	FOR RTS	KC	BG

PLANTING SCHEDULE

PLANT IMAGES

Code	Botanical Name	Common Name	Mature Height	Native	Endemic	Spacing	Pot Size	Quantity
Trees								
BAN AEM	<i>Banksia aemula</i>	Wallum Banksia	8m	✓	✓	As shown	75L	7
BAN INT	<i>Banksia integrifolia</i>	Coastal Banksia	4m	✓	✓	As shown	75L	5
BAN SER	<i>Banksia serrata</i>	Old Man Banksia	16m	✓	✓	As shown	75L	4
CAS CUN	<i>Casuarina cunninghamiana</i>	River Oak	12m	✓		As shown	75L	8
CAS GLA	<i>Casuarina glauca</i>	Swamp Oak	8-20m	✓		As shown	75L	8
COR GUM	<i>Corymbia gummifera</i>	Red Bloodwood	20m	✓	✓	As shown	75L	9
ELA EUM	<i>Elaeocarpus eumundi</i>	Eumundi Quandong	12m	✓		As shown	75L	11
ELA RET	<i>Elaeocarpus reticulatus</i>	Blueberry Ash	3-15m	✓	✓	As shown	75L	10
EUC BOT	<i>Eucalyptus botryoides</i>	Bangalay	40m	✓	✓	As shown	75L	7
EUC HAE	<i>Eucalyptus haemastoma</i>	Broad-Leaved Scribbly Gum	12m	✓	✓	As shown	75L	9
EUC PIP	<i>Eucalyptus piperita</i>	Sydney Peppermint	12m	✓	✓	As shown	75L	7
TRI LUS	<i>Tristaniopsis laurina 'Luscious'</i>	Water Gum	8m	✓		As shown	75L	5
Shrubs								
ACA lon	<i>Acacia longifolia</i>	Long-Leaved Wattle	6m	✓	✓	As shown	200mm	13
AOT eri	<i>Aotus ericoides</i>	Aotus	2m	✓	✓	As shown	200mm	24
ASP aus	<i>Asplenium australasicum</i>	Birds Nest Fern	1.5m			As shown	200mm	34
BRE obl	<i>Breynia oblongifolia</i>	Coffee Bush	3m	✓		As shown	200mm	15
BAN eri	<i>Banksia ericifolia</i>	Heath-Leaved Banksia	4m	✓	✓	As shown	200mm	25
BLE sil	<i>Blechnum 'Silver Lady'</i>	Dwarf Tree Fern	1.2m			As shown	200mm	3
DOR exc	<i>Doryanthes excelsa</i>	Gymea Lily	3m	✓		As shown	200mm	12
ISO ane	<i>Isopogon anemonifolius</i>	Broad-Leaved Drumsticks	1m	✓	✓	As shown	200mm	40
LEP lae	<i>Leptospermum laevigatum</i>	Coast Tea Tree	1.5-6m	✓	✓	1m Ctrs	200mm	55
MEL nod	<i>Melaleuca nodosa</i>	Prickly-Leaved Paperbark	3m	✓	✓	As shown	200mm	12
MIC mus	<i>Microsorium musifolium</i>	Crocodile Fern	1.2m			As shown	200mm	9
MON ell	<i>Monotoca elliptica</i>	Tree Broom Heath	4m	✓	✓	As shown	200mm	25
PIM lin	<i>Pimelea linifolia</i>	Slender Riceflower	1.5m	✓	✓	As shown	200mm	44
PHI bux	<i>Philothea buxifolia</i>	Wax Flower	1.3m	✓	✓	As shown	200mm	37
RIC pin	<i>Ricinoscarpos pinifolius</i>	Wedding Bush	1m	✓	✓	As shown	200mm	47
WOO pun	<i>Woollisia pungens</i>	Snow Wreath	0.6m	✓	✓	As shown	200mm	30
Grasses + Groundcover								
DAM lin	<i>Dampiera linearis 'Cobalt Mound'</i>	Dampiera	0.3m	✓		3/m2	140mm	81
DAM str	<i>Dampiera stricta</i>	Dampiera	0.4m	✓	✓	5/m2	140mm	697
DIA cae	<i>Dianella caerulea</i>	Blue Flax Lily	0.5m	✓	✓	5/m2	Tubestock	1012
GAR oso	<i>Gardenia augusta 'O So Fine'</i>	Common Gardenia	0.3m			3/m2	140mm	24
IMP cyl	<i>Imperata cylindrica</i>	Cogon Grass	1m	✓	✓	5/m2	Tubestock	790
LIR isa	<i>Liriope muscari 'Isabella'</i>	Lily-Turf	0.3m			4/m2 or 4/Lm	140mm	352
LOM lon	<i>Lomandra longifolia</i>	Mat Rush	0.6m	✓	✓	5/m2	Tubestock	369
LOM gla	<i>Lomandra glauca</i>	Mat Rush	0.5m	✓	✓	5/m2	Tubestock	697
MYO par	<i>Myoporum parvifolium 'Yareena'</i>	Creeping Boobialla	0.2m			3/m2	140mm	33
POM umb	<i>Pomax umbellata</i>	Pomax	0.4m	✓	✓	5/m2	Tubestock	281
PTE esc	<i>Pteridium esculentum</i>	Bracken Fern	0.5-2m	✓	✓	5/m2	Tubestock	220
SCA aem	<i>Scaevola aemula</i>	Fan Flower	0.4m			3/m2 or 3/Lm	140mm	279
SEN ser	<i>Senecio serpens</i>	Blue Chalksticks	0.3m			3/m2 or 3/Lm	140mm	165
THE aus	<i>Themeda australis</i>	Kangaroo Grass	1.5m	✓	✓	5/m2	Tubestock	334
TRA jas	<i>Trachelospermum jasminoides</i>	Star Jasmine	0.5m			3/m2 or 3/Lm	140mm	165
XAN res	<i>Xanthorrhoea resinosa</i>	Grass Tree	1m	✓	✓	5/m2	Tubestock	281
Level 1 Planting								
POG pan	<i>Pogonatherum panicum</i>	Panda Grass	0.5m			As shown	200mm	24
TRA jas	<i>Trachelospermum jasminoides</i>	Star Jasmine	0.5m			3/m2 or 3/Lm	140mm	138

*Plant numbers to be finalised at Detailed Design / CC-Tender stage



Corymbia gummifera



Woollisia pungens



Dampiera stricta



Scaevola aemula



Ricinoscarpos pinifolius



Eucalyptus haemastoma



Philothea buxifolia



Aotus ericoides



Pomax umbellata



Liriope muscari 'Isabella'



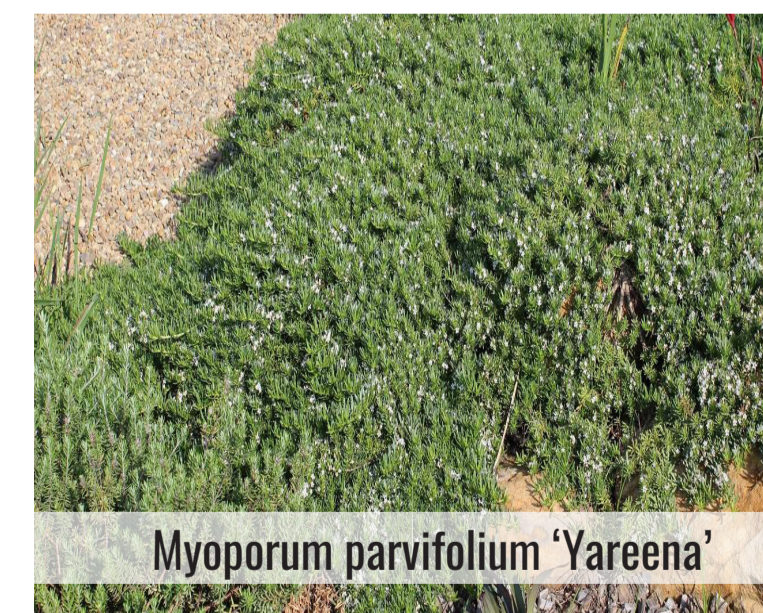
Dianella revoluta



Elaeocarpus eumundi



Pimelea linifolia



Myoporum parvifolium 'Yareena'



Banksia integrifolia

Drawing Title:
Planting Schedule & Imagery

DWG No: **SSD-07**

GEOSCAPES
LANDSCAPE ARCHITECTS
Suite 215, 284 Victoria Ave, Chatswood NSW 2067 Ph. (02) 9411 1485
www.geoscapes.com.au
ABN 84 620 205 781 ACN 620 205 781

Architect:



Project Manager:



Scale:	Date:	Job Number:	North:	Revision	STATE SIGNIFICANT DEVELOPMENT			
N/A	06.07.22	2111102	N/A	Rev	Date	Description	Drawn	Checked
Project:	42 Raymond Avenue			B	20.12.22	FOR SSD	KC	BG
	Matraville, NSW 2036			C	25.02.22	FOR SSD	KC	BG
				D	08.03.22	FOR SSD	PT	BG
				E	06.07.22	FOR RTS	KC	BG