

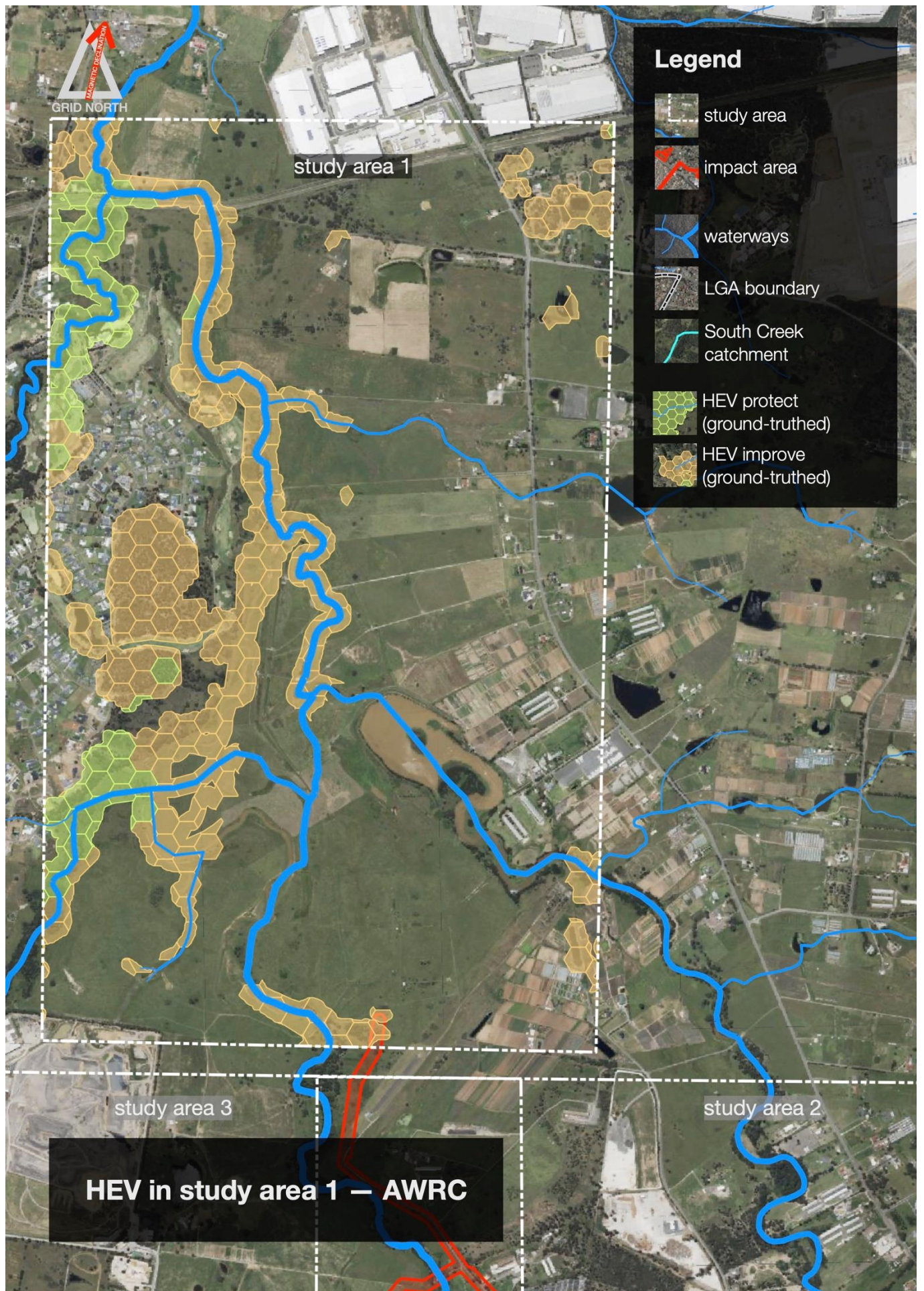


# **Appendix E**

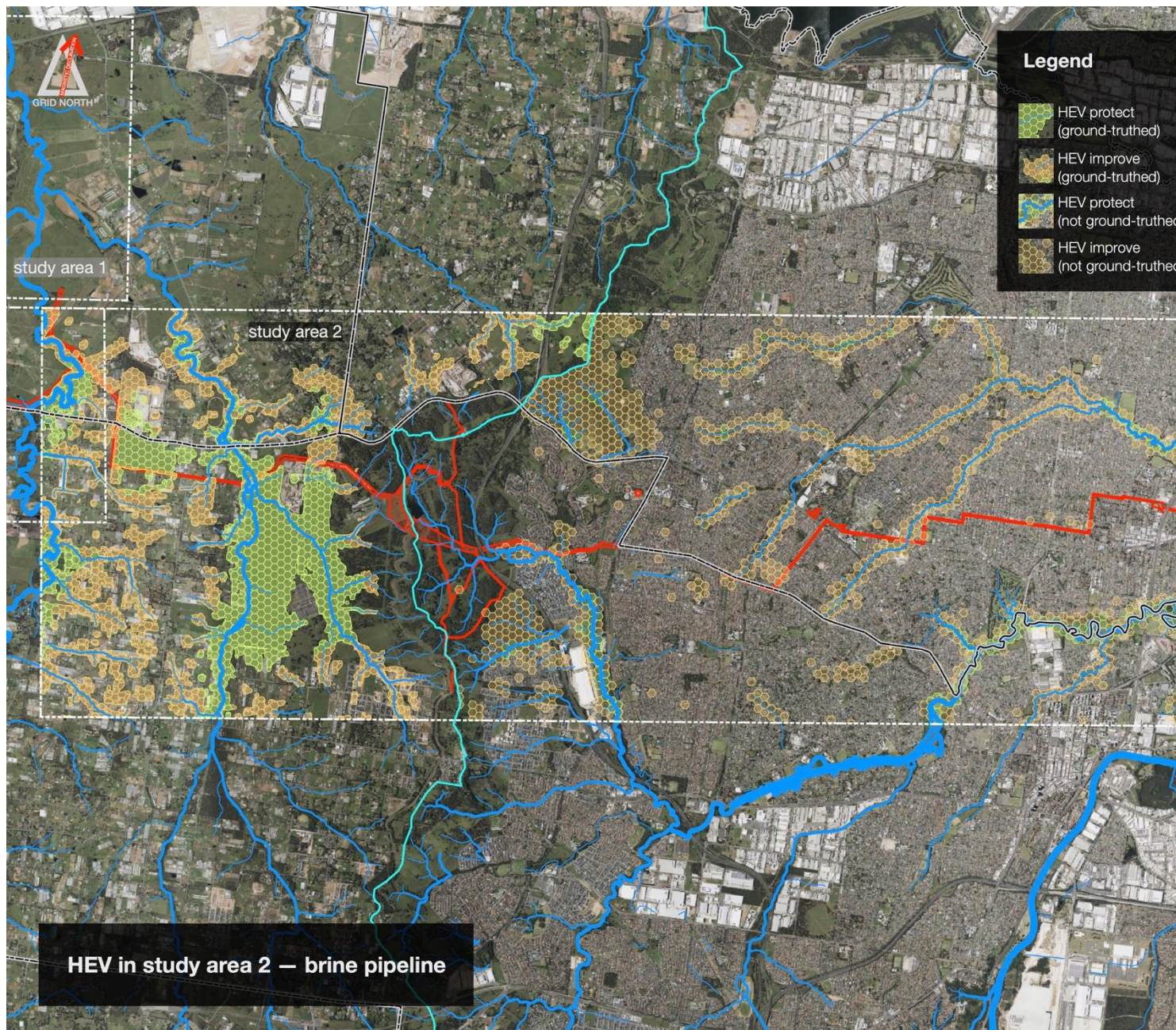
# **Aquatic Ecology**

# **Maps**

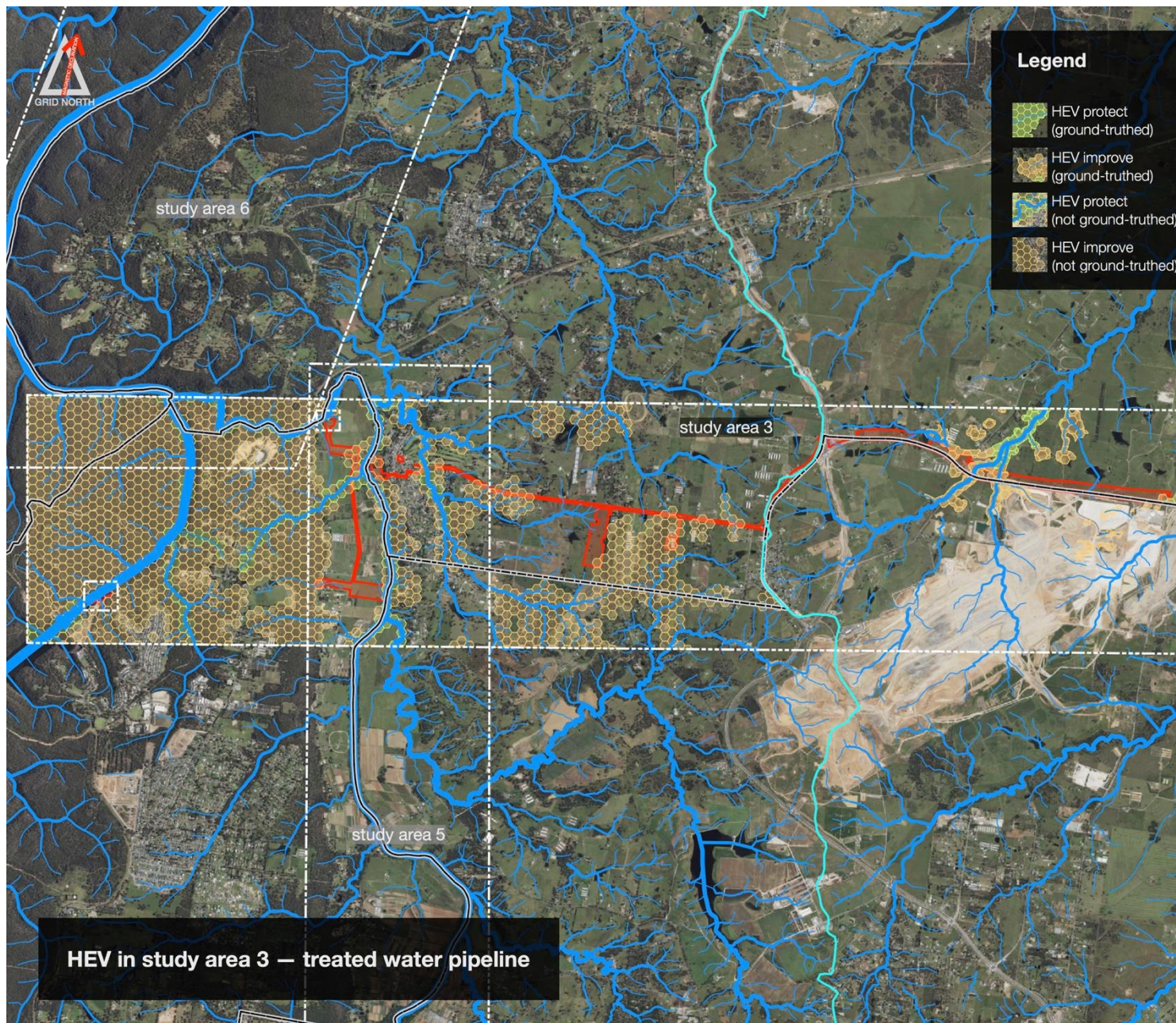








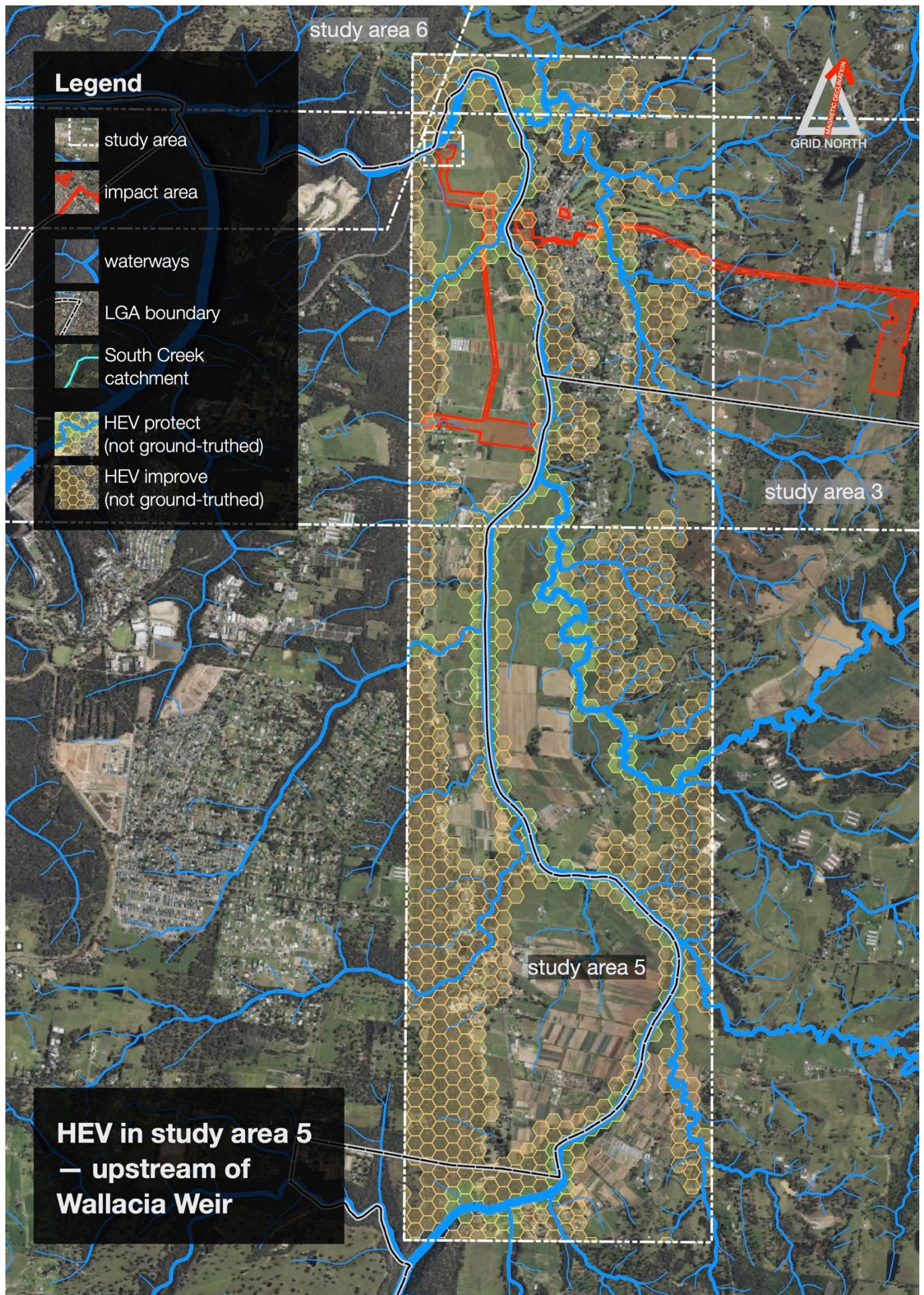














## Legend



study area

impact area

waterways

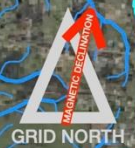
LGA boundary

South Creek  
catchment

HEV protect  
(not ground-truthed)

HEV improve  
(not ground-truthed)

study area 6



**HEV in study area 6  
— downstream of  
Wallacia Weir**

study area 5

study area 3