



SCEGGS DARLINGHURST

Landscape Masterplan

Rev F
May 2022
18549

context

INTRODUCTION

The SSD DA seeks development consent for:

1. Concept approval of the 2040 Masterplan for the SCEGGS Darlinghurst campus, including:

- Conceptual approval for the demolition of the following buildings:
 - Wilkinson House fronting Forbes Street
 - Library and science building fronting Bourke Street
 - The old gym building at the northern end of Thomson Street
 - Part of the additions to the Barham Building fronting Forbes Street
- Building envelopes and land use for the following new buildings:
 - Four-storey school building at the corner of Forbes Street and St Peters Street for general school purposes
 - Maximum six storey multi-purpose building fronting Bourke Street for general school purposes and potential centre-based child care facility
 - On-site vehicular drop-off with associated car parking from Bourke Street within the multi-purpose building
 - Maximum four-storey administration building fronting Forbes Street for general school purposes

- Conservation works to the existing Barham Building within the school premises to remove non-original building fabric and use for general school purposes

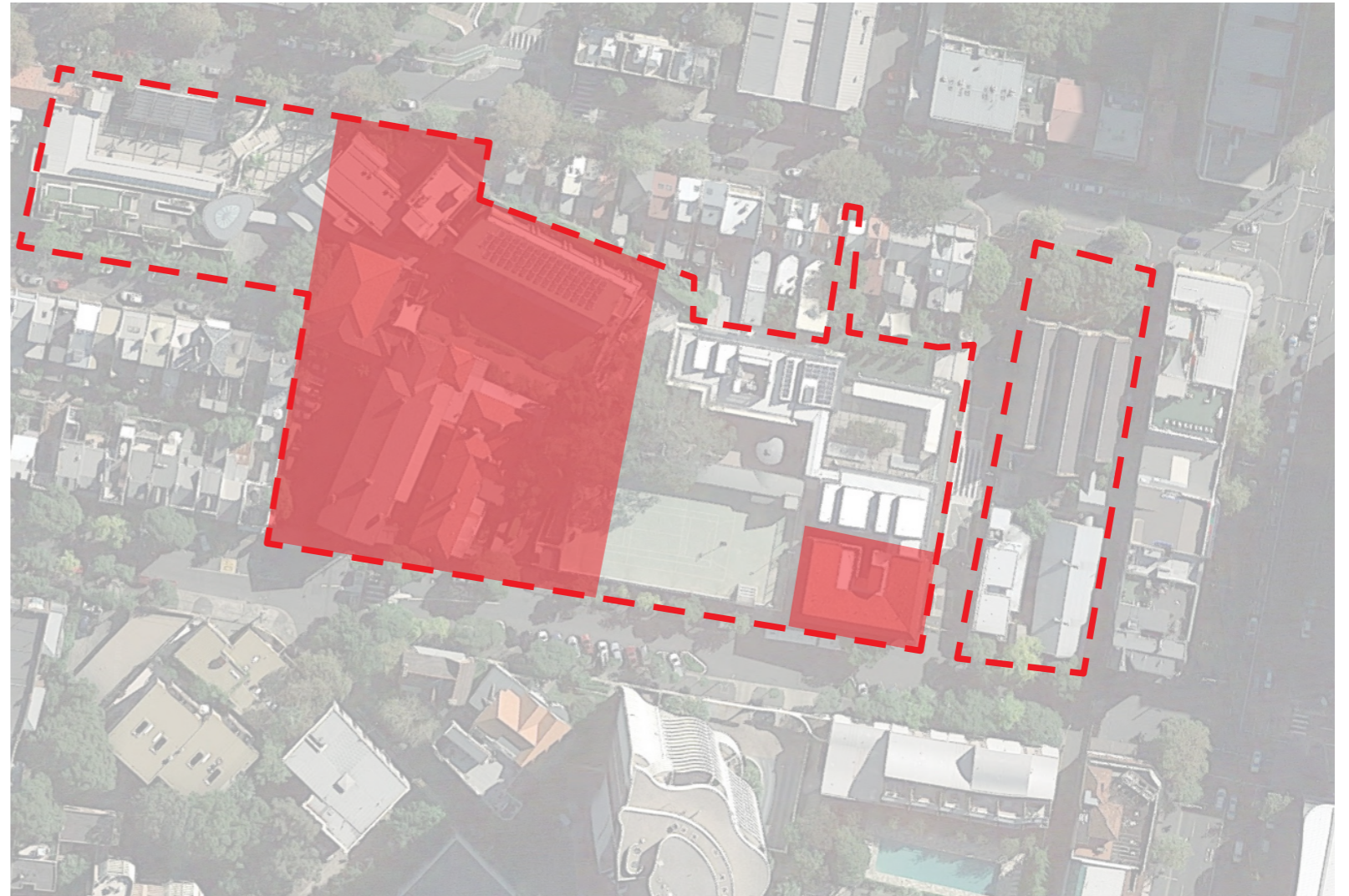
2. Detailed consent for the demolition of Wilkinson House, basement excavation, and construction of a new four storey building (new Wilkinson House) comprising approximately 1,507sqm of gross floor area (GFA) and a maximum height of 15m for the purposes of new teaching and education spaces.

SCEGGS Darlinghurst was founded in 1895 as the Sydney Church of England Girls Grammar School, with the current campus established in 1901.

The campus is bounded by Bourke Street, St Peters Street, St Peters Lane, Forbes Street and Thomson Street and shares boundaries with residential properties to the North and West.

Architectural styles across the campus range from the original Barham building to recently completed works including the Joan Freeman Science and Technology Centre.

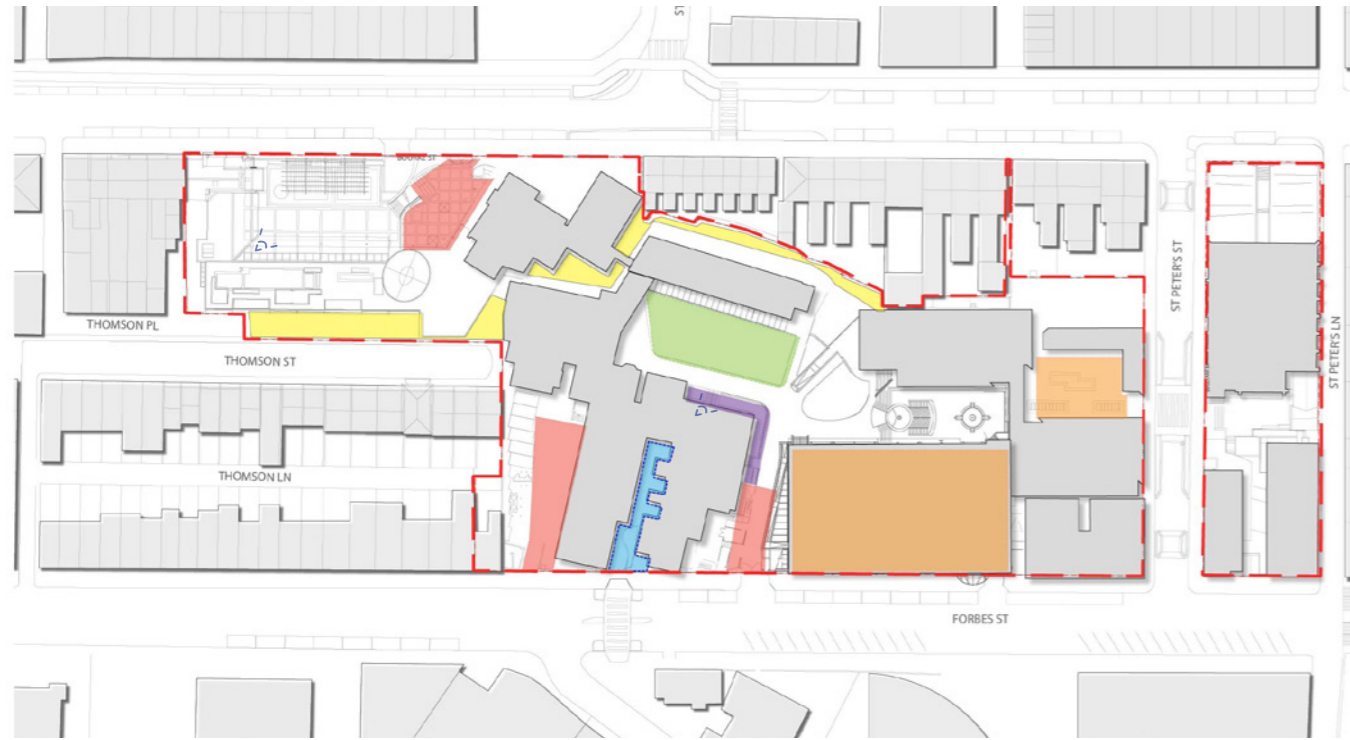
The purpose of this landscape masterplan is to provide an overall vision for the campus - unifying the various character areas while remaining sympathetic to the rich heritage of the site, providing a cohesive design language and palette of materials, and building on the School's commitment to quality public domain and outdoor spaces shown in St Peters Street.



SCEGGS DARLINGHURST CAMPUS EXTENT

ANALYSIS

Existing Site Character



LEGEND

- Underutilised Entry Spaces
- Disconnected Formal Entry
- Heritage Significant Curtilage
- Central Lawn Space
- Open Active Zones
- Cliff Edge
- ↗ Existing District Views

Existing Trees and Vegetation



*Refer AIA Report by Bluegum Tree Care and Consultancy (November 2018)

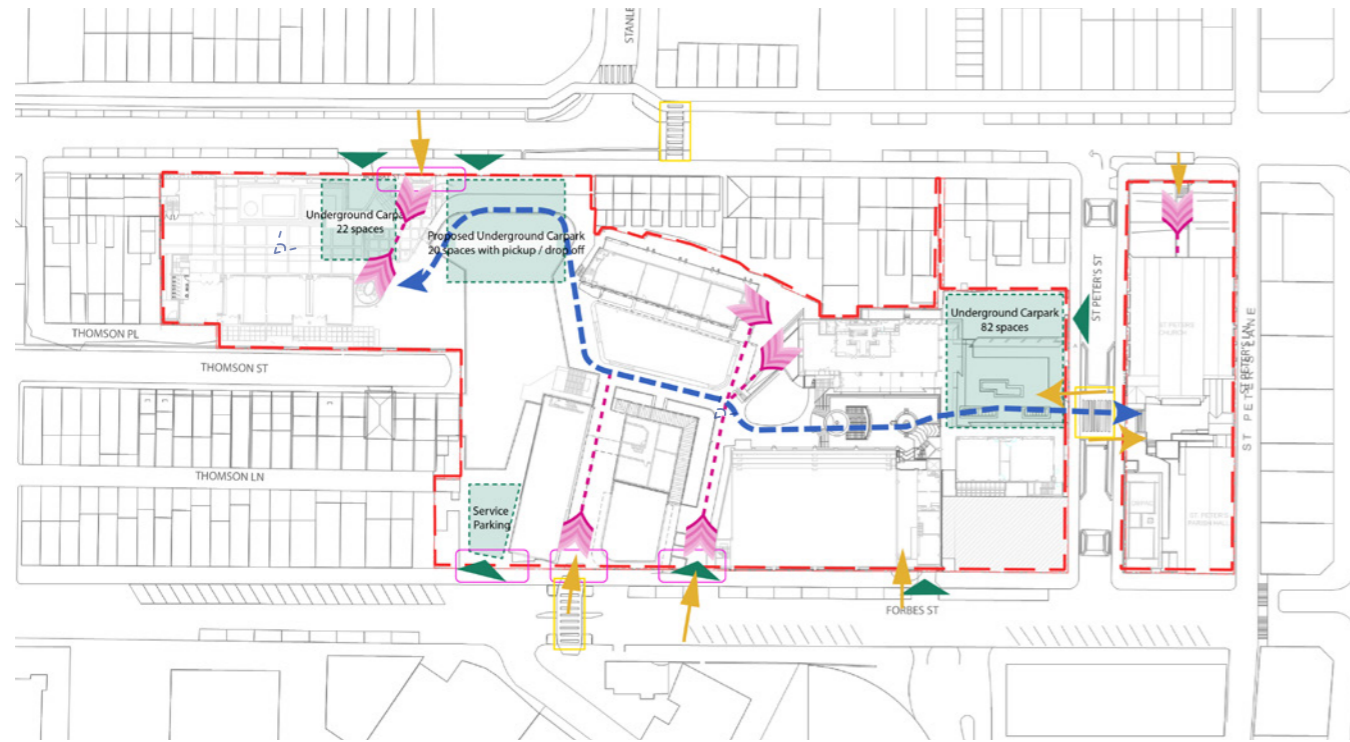
LEGEND

- Existing Street Trees
- Existing Trees On Site
- Existing Significant Trees On Site
- Trees to be removed
- Green space



ANALYSIS

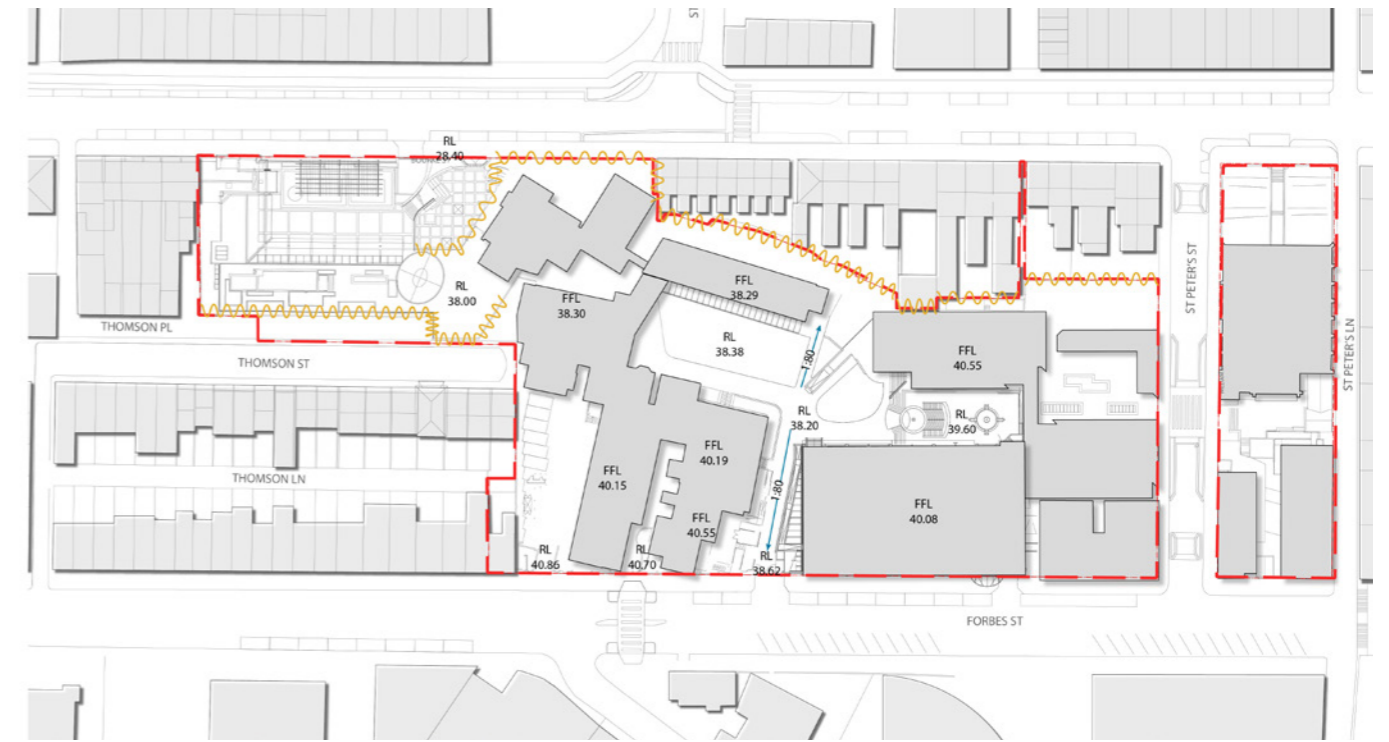
Access and Circulation



LEGEND

- Primary Pedestrian Movements
- Secondary Pedestrian Movements
- Vehicle Entries
- Pedestrian Entries
- Gated Entry Portals

Site Topography



LEGEND

- Key Existing External Levels
- Proposed Building Floor Levels
- Sandstone Cliff Face



Existing formal entry



Existing side gate - under-utilised entry



Through-site access



Existing sandstone cliff face



Existing ramp arrangement



Existing level change across site



DESIGN PRINCIPLES

The following design principles capture the main urban design qualities that are proposed to achieve the objectives for the project. They form the basis for thinking about and evaluating the design and for deriving the criteria to judge the quality of the SCEGGS campus design.



PROVIDE A CONSISTENCY THROUGH USE OF MATERIALS

- Unification of character across the campus through consistent suite of materials and finishes.
- Build on SCEGGS commitment to high quality public domain and outdoor spaces as demonstrated in St Peters Street
- Palette of materials and finishes to reflect and unify the range of architectural styles across the campus.



IMPROVE STREET ADDRESS AND SENSE OF ARRIVAL

- Formalise main/admin entry from Forbes St
- Enhance arrival experience for students entering the school from Forbes St, Bourke St and St Peters St
- Enhance arrival experience for primary school students entering the school from Bourke St.



ENHANCE HERITAGE CHARACTER

- Enhance the heritage character of the school, including existing buildings, spaces and existing mature trees
- Materiality is to reflect the juxtaposed architectural character (existing and proposed)



MAXIMISE USABLE OUTDOOR SPACE

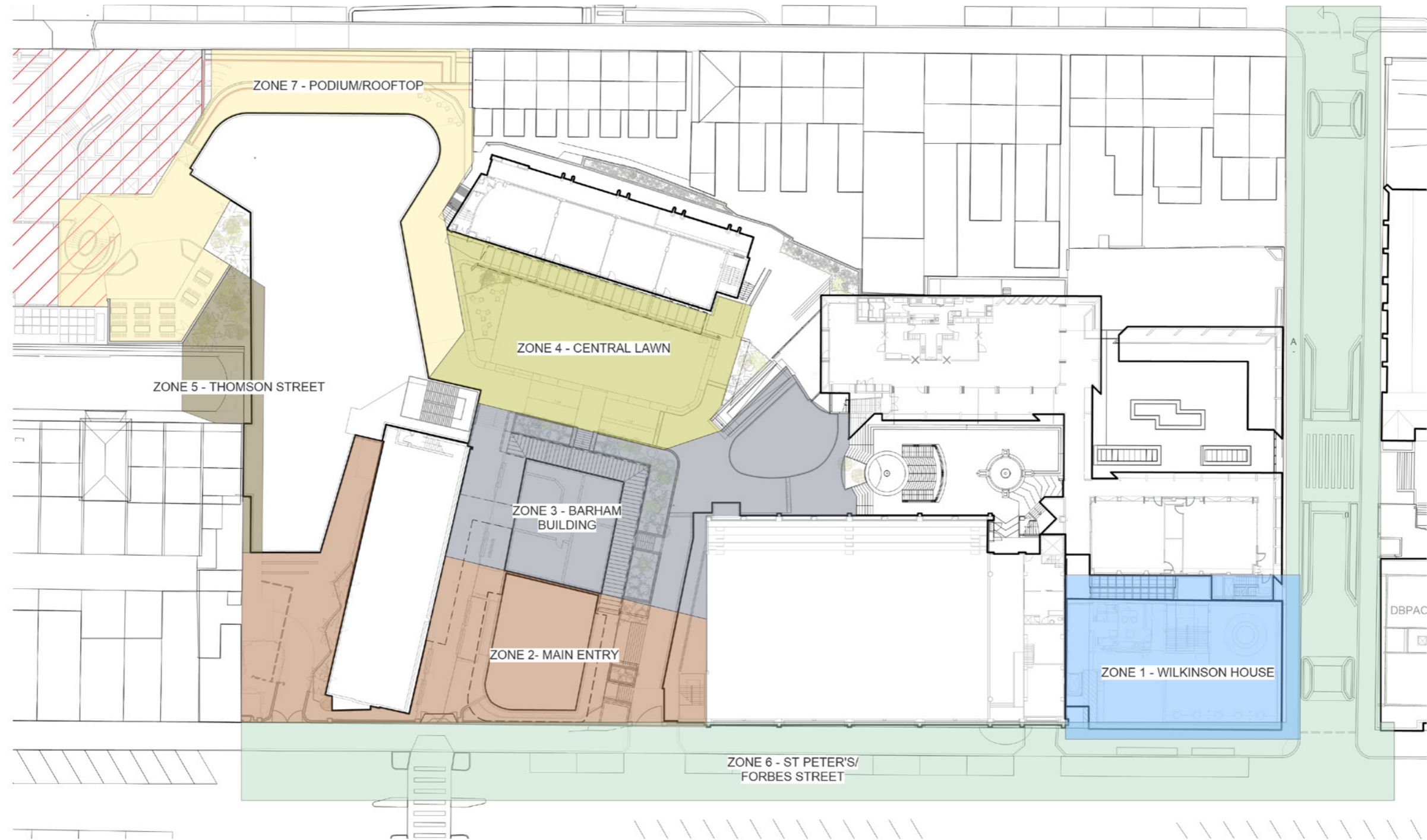
- Maximise usable outdoor space across the school site, with particular consideration given to how the central lawn and podium areas will function as the main passive outdoor spaces for the school
- Provide a number of passive spaces throughout the campus for students to utilise in different ways for outdoor learning.



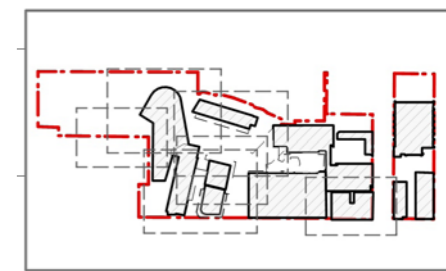
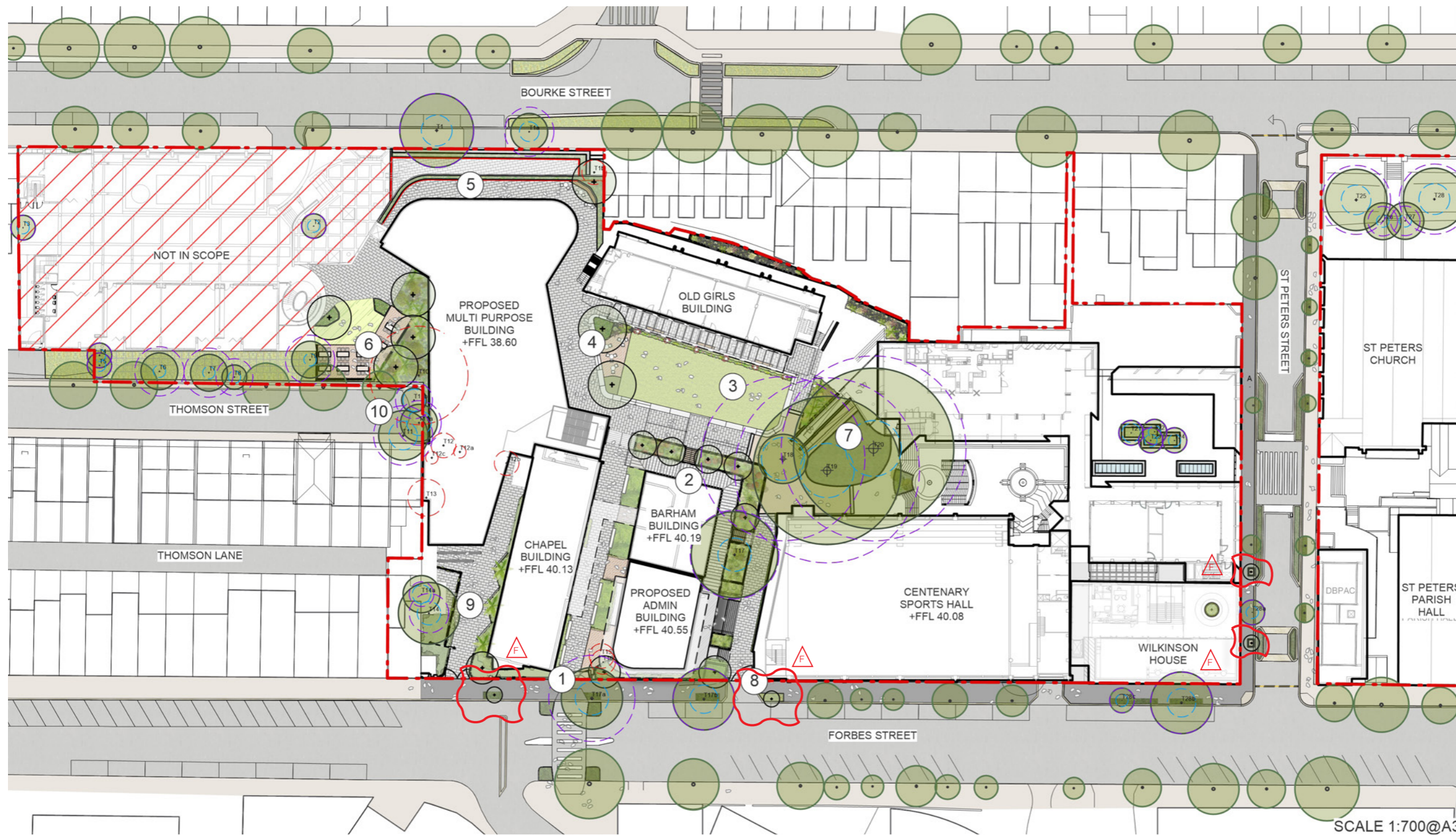
MAINTAIN AND ENHANCE EXISTING MATURE TREE CANOPY

- Existing trees reinforce a distinctive character and identity.
- Reinforce the park/campus theme to the school.
- Develop strong landscape links through enhancing the character of additional tree planting.

LANDSCAPE CHARACTER ZONES



LANDSCAPE MASTERPLAN



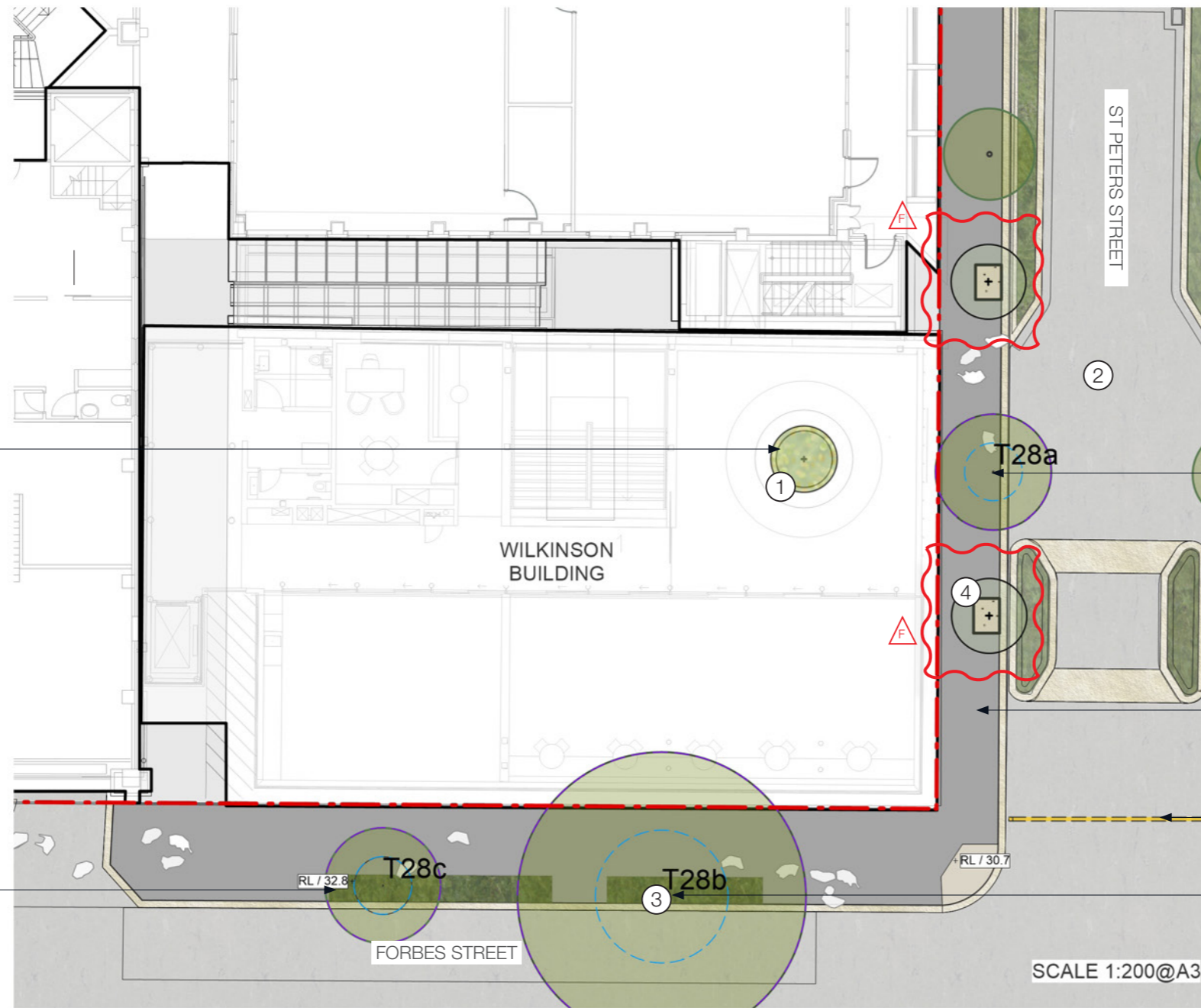
- ### LEGEND
- SITE / PROPERTY BOUNDARY
 - BOUNDARY
 - EXISTING TREES TO BE RETAINED
TPZ & SRZ SHOWN
 - PROPOSED TREES
 - TREE TO BE REMOVED
 - FEATURE PLANTING
 - MASS PLANTING
 - EXISTING STREET PLANTING
 - TURFED AREA
 - SYNTHETIC TURF
 - EXISTING DECOMPOSED GRANITE
 - INSITU CONCRETE WALL
 - CONCRETE BLEACHER STEPS
 - PAVING TYPE 1: LARGE FORMAT STONE PAVING
 - PAVING TYPE 2: RECYCLED HERRINGBONE BRICK PAVING
 - FURNITURE
 - DECOMPOSED GRANITE TREE PIT

SCALE 1:700@A3

* NOTE: Nominal proposed street tree planting and spacing only, subject to feasibility and testing. Tree planting to be accommodated where possible, subject to requirements for clearance, sightlines and underground and above-ground utilities.

- | | |
|--|--|
| <ul style="list-style-type: none"> 1 FORBES STREET ENTRY 2 BARHAM BUILDING CURTLAGE 3 CENTRAL LAWN 4 GATHERING NODES 5 PODIUM/ROOFTOP | <ul style="list-style-type: none"> 6 PASSIVE ZONE 7 EXISTING FIG TREE TO BE RETAINED + PROTECTED 8 JACARANDA GATE 9 FORECOURT 10 THOMSON STREET |
|--|--|

CHARACTER ZONE - WILKINSON HOUSE



Proposed rooftop terrace planter with native feature tree. The feature tree will be regularly pruned to ensure its height is controlled and no neighbouring views obstructed. Locally native species, suitable for harsh conditions, will be used to complete the understorey planting

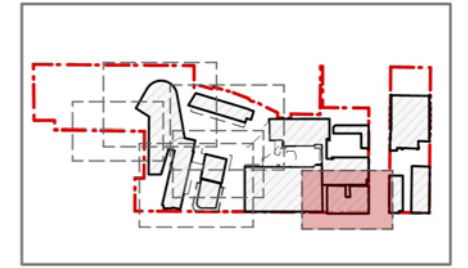
Proposed planters to strengthen Wilkinson House entry, improve pedestrian experience and match existing public domain condition

Existing street trees to be retained and protected

Proposed asphalt pavement to match the existing public domain condition. Asphalt pavement as per the public domain manual

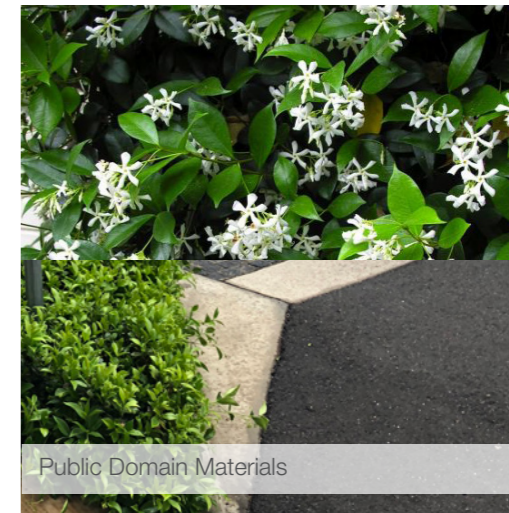
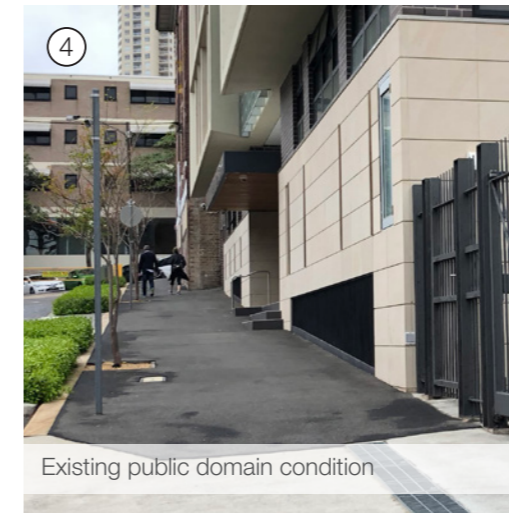
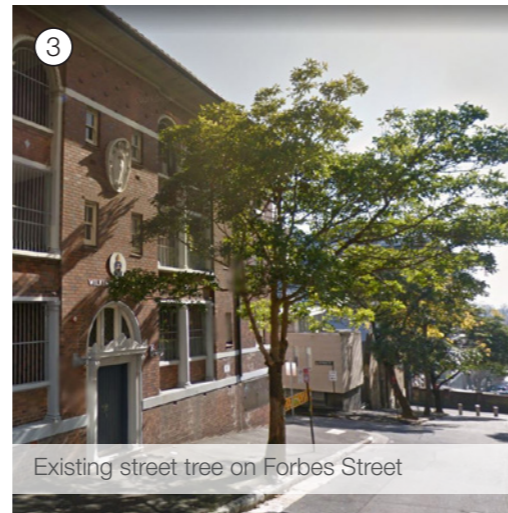
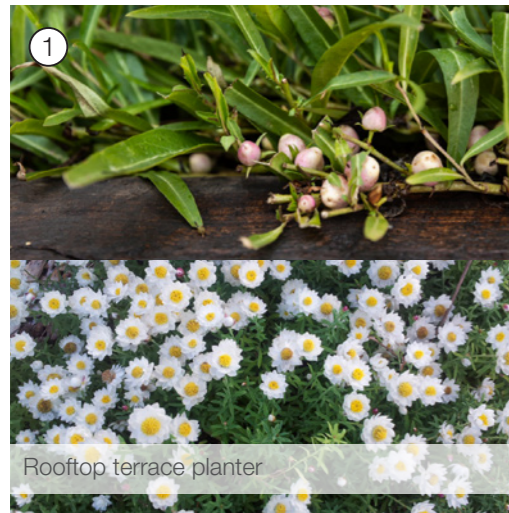
Existing boom gate to be retained

Existing street trees to be retained and protected

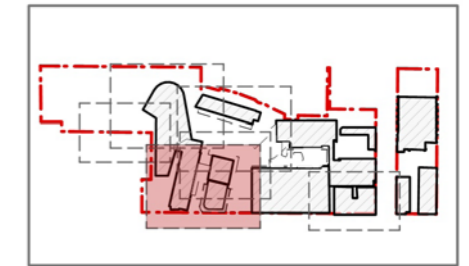


LEGEND

- SITE / PROPERTY BOUNDARY
- EXISTING TREES TO BE RETAINED TPZ & SRZ SHOWN
- PROPOSED TREES
- MASS PLANTING
- EXISTING STREET PLANTING
- DECOMPOSED GRANITE TREE PIT

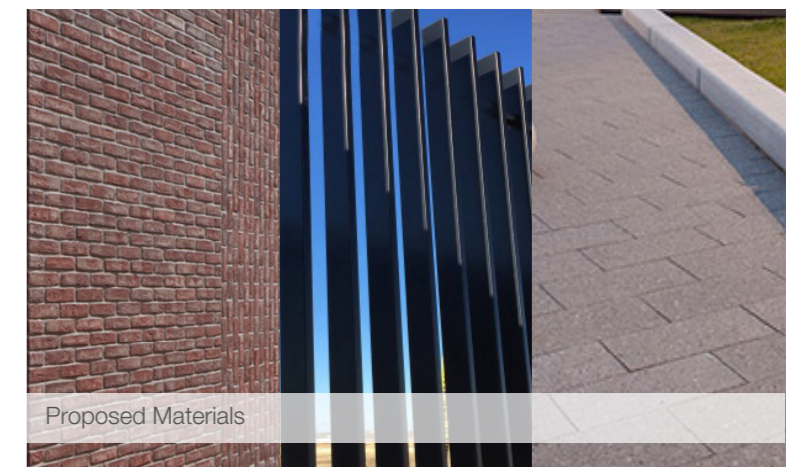
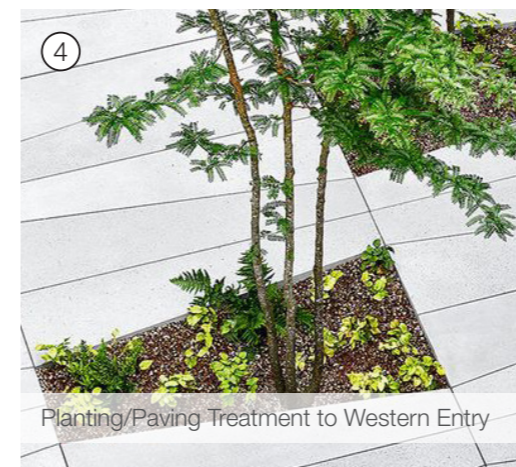
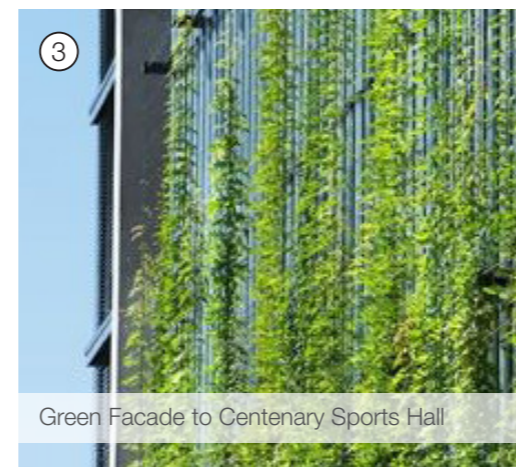
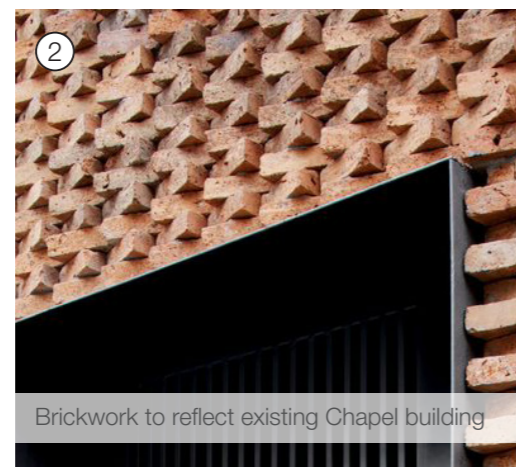
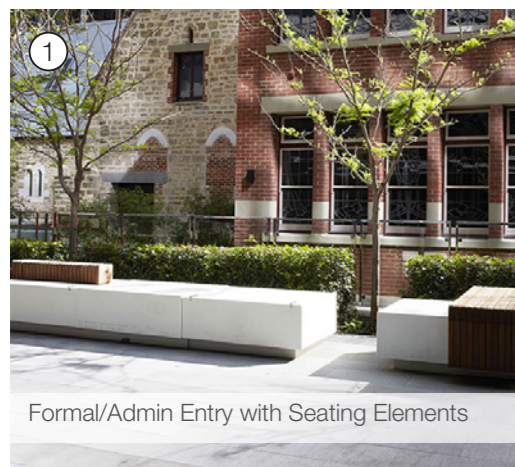


CHARACTER ZONE - FORBES STREET ENTRY

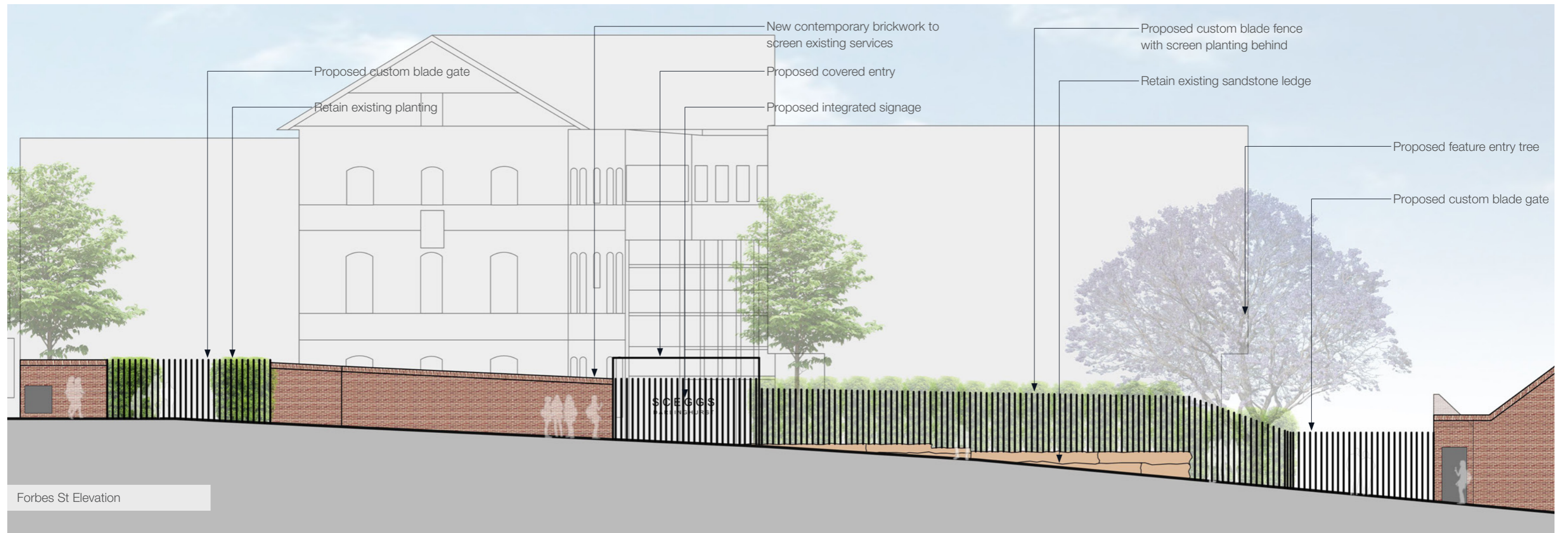


LEGEND

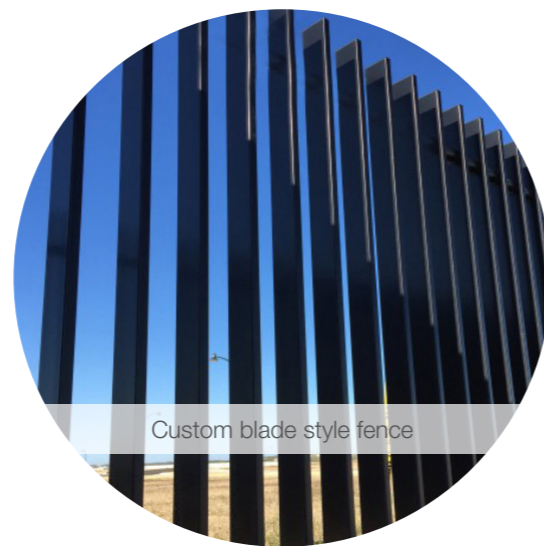
- SITE / PROPERTY BOUNDARY
- EXISTING TREES TO BE RETAINED TPZ & SRZ SHOWN
- PROPOSED TREES
- TREE TO BE REMOVED
- FEATURE PLANTING
- MASS PLANTING
- EXISTING STREET PLANTING
- CLIMBING PLANTS
- TURFED AREA
- SYNTHETIC TURF
- EXISTING DECOMPOSED GRANITE
- INSITU CONCRETE WALL
- CONCRETE BLEACHER STEPS
- PAVING TYPE 1: LARGE FORMAT STONE PAVING
- PAVING TYPE 2: RECYCLED HERRINGBONE BRICK PAVING
- ENGRAVED EDGING



CHARACTER ZONE - FORBES STREET ELEVATION



Contemporary brickwork



Custom blade style fence

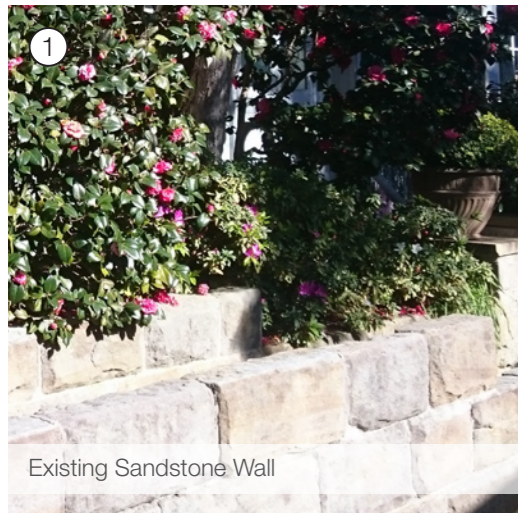


Existing sandstone shelf



Integrated entry signage

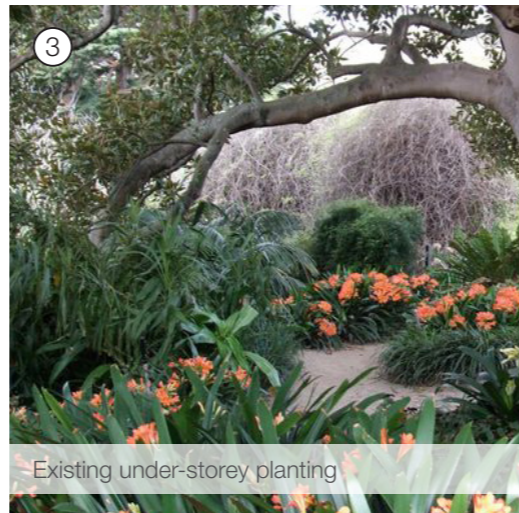
CHARACTER ZONE - HERITAGE ZONE



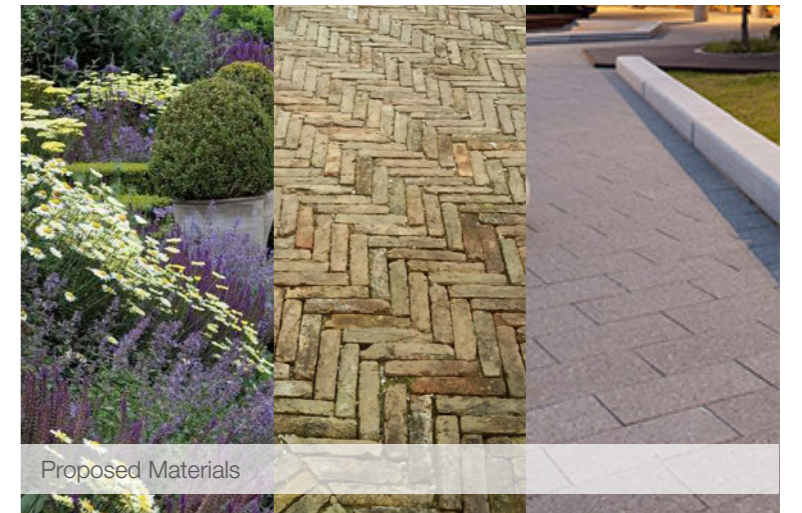
Existing Sandstone Wall



Proposed Barham building character planting

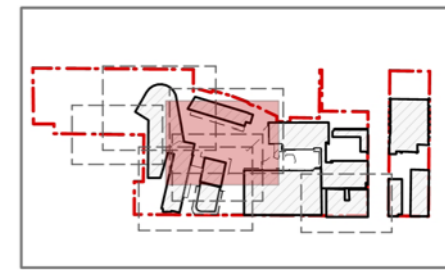


Existing under-storey planting



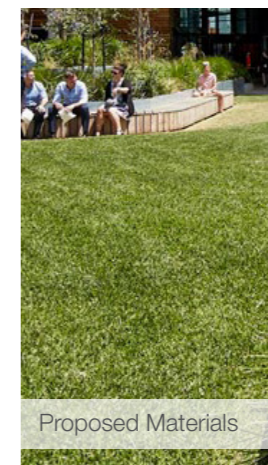
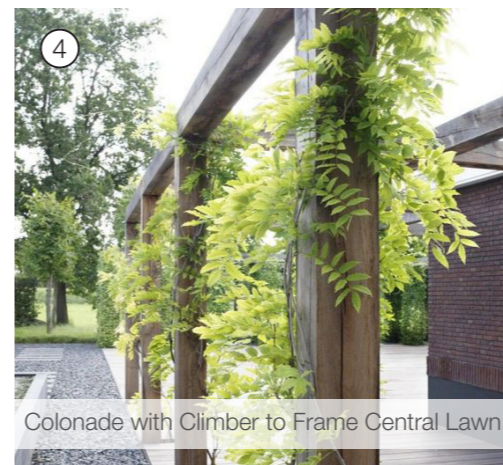
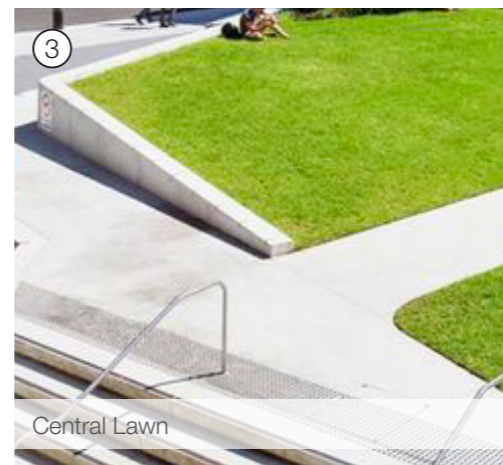
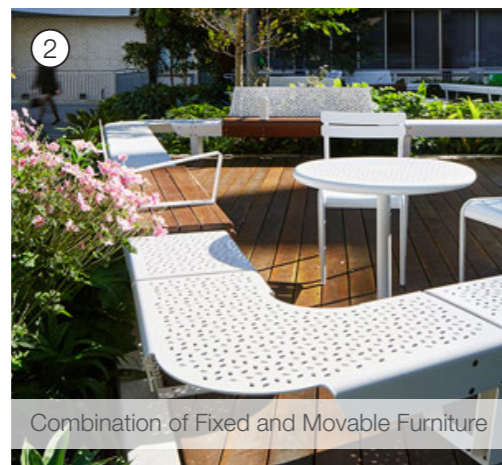
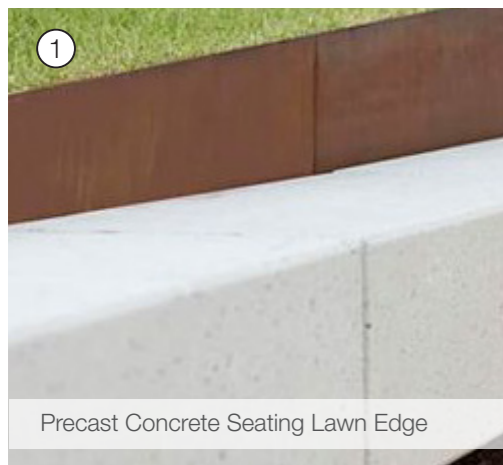
Proposed Materials

CHARACTER ZONE - CENTRAL LAWN



LEGEND

- SITE / PROPERTY BOUNDARY
- EXISTING TREES TO BE RETAINED TPZ & SRZ SHOWN
- PROPOSED TREES
- FEATURE PLANTING
- MASS PLANTING
- TURFED AREA
- EXISTING DECOMPOSED GRANITE
- INSITU CONCRETE WALL
- CONCRETE BLEACHER STEPS
- PAVING TYPE 1: LARGE FORMAT STONE PAVING
- PAVING TYPE 2: RECYCLED HERRINGBONE BRICK PAVING
- FURNITURE
- ENGRAVED EDGING

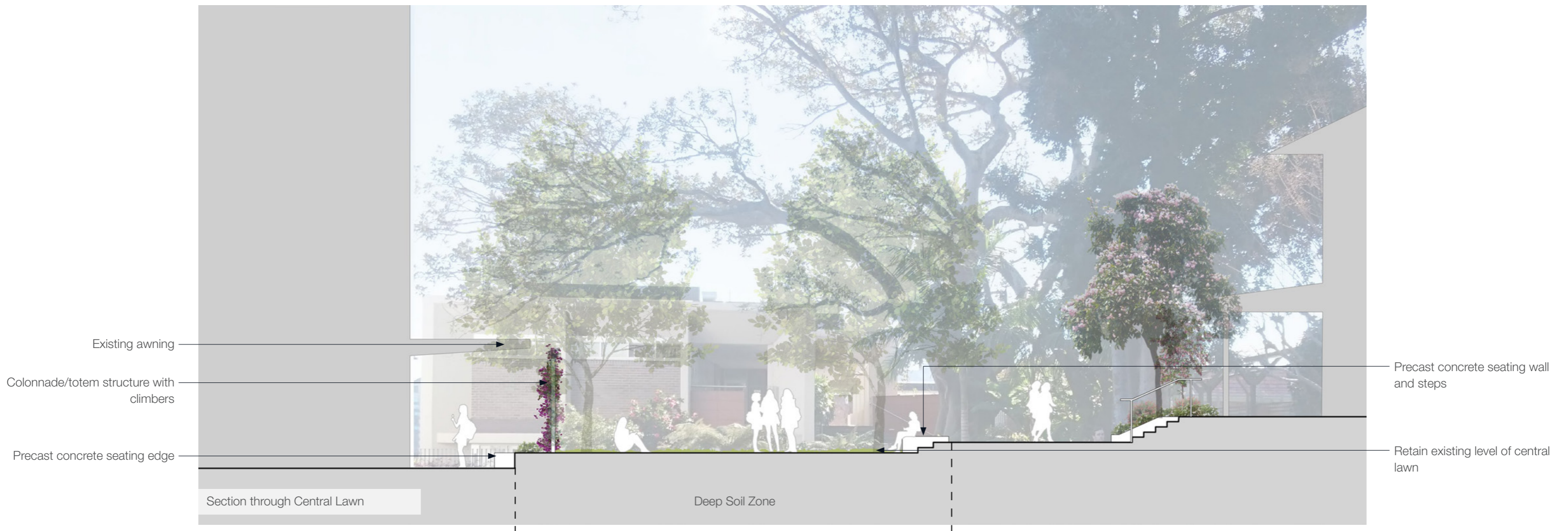


CHARACTER ZONE - CENTRAL LAWN

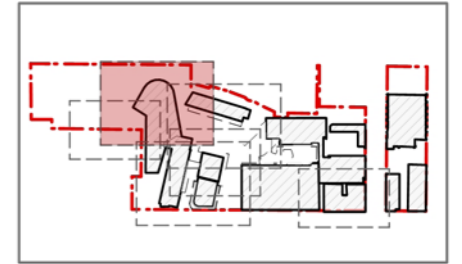
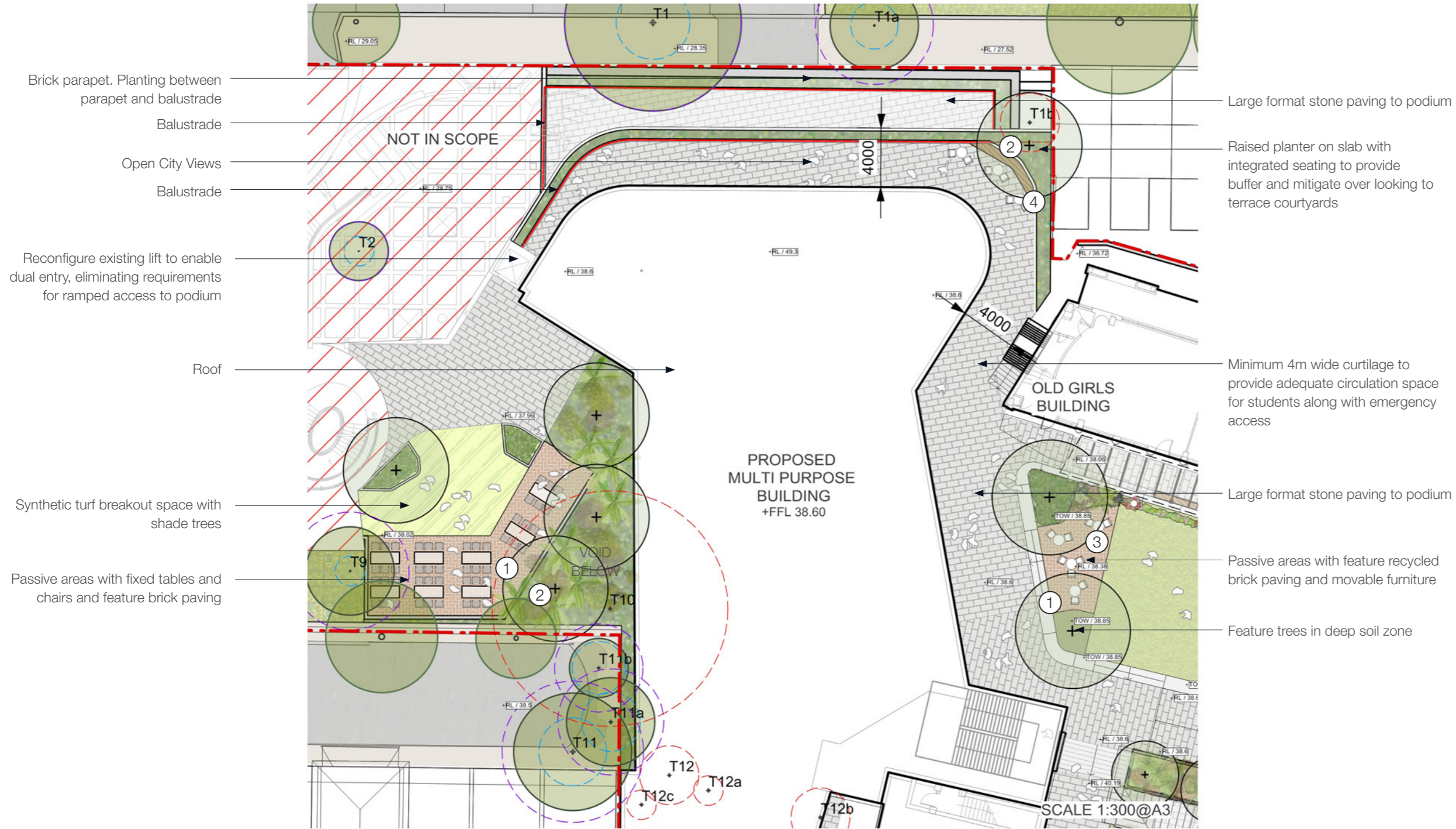


Perspective of Proposed Podium And Lawn Treatment

CHARACTER ZONE - CENTRAL LAWN

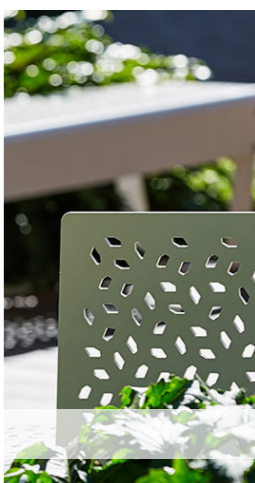
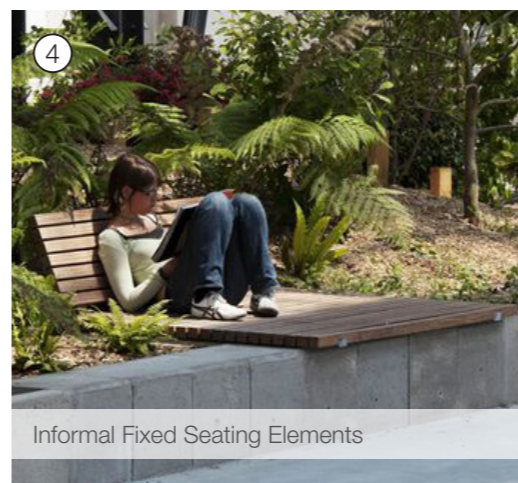
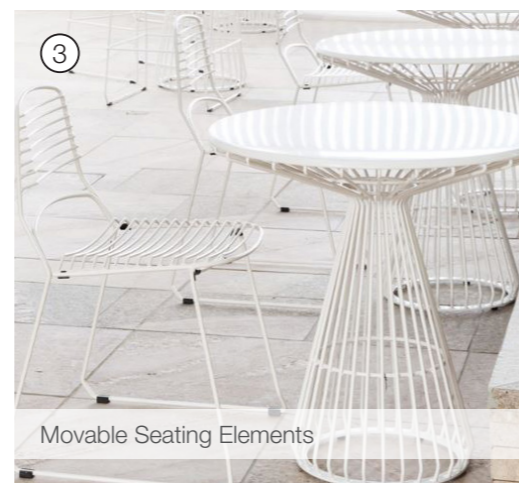
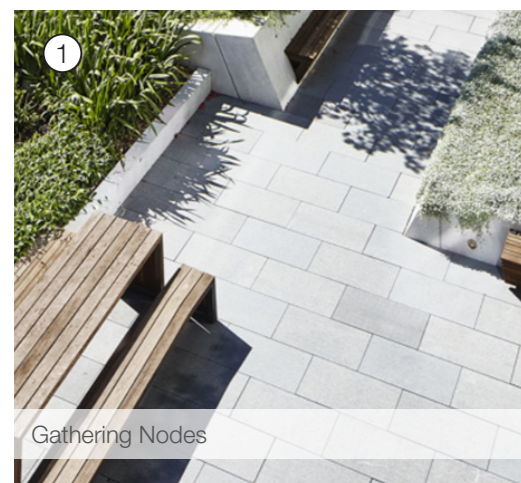


CHARACTER ZONES - PODIUM + ROOFTOP



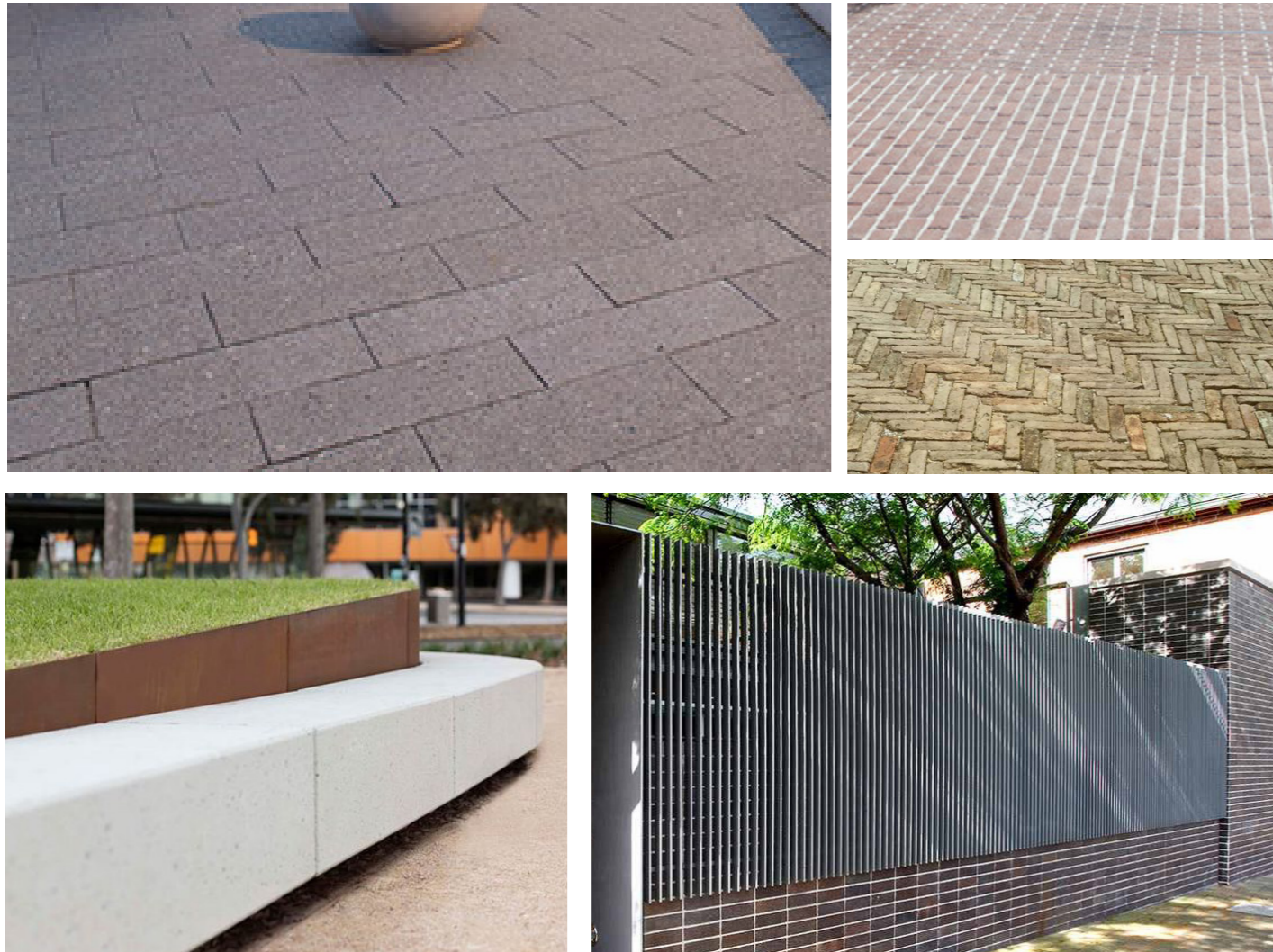
LEGEND

- SITE / PROPERTY BOUNDARY
- EXISTING TREES TO BE RETAINED TPZ & SRZ SHOWN
- PROPOSED TREES
- TREE TO BE REMOVED
- FEATURE PLANTING
- MASS PLANTING
- TURFED AREA
- SYNTHETIC TURF
- EXISTING DECOMPOSED GRANITE
- INSITU CONCRETE WALL
- CONCRETE BLEACHER STEPS
- PAVING TYPE 1: LARGE FORMAT STONE PAVING
- PAVING TYPE 2: RECYCLED HERRINGBONE BRICK PAVING
- FURNITURE

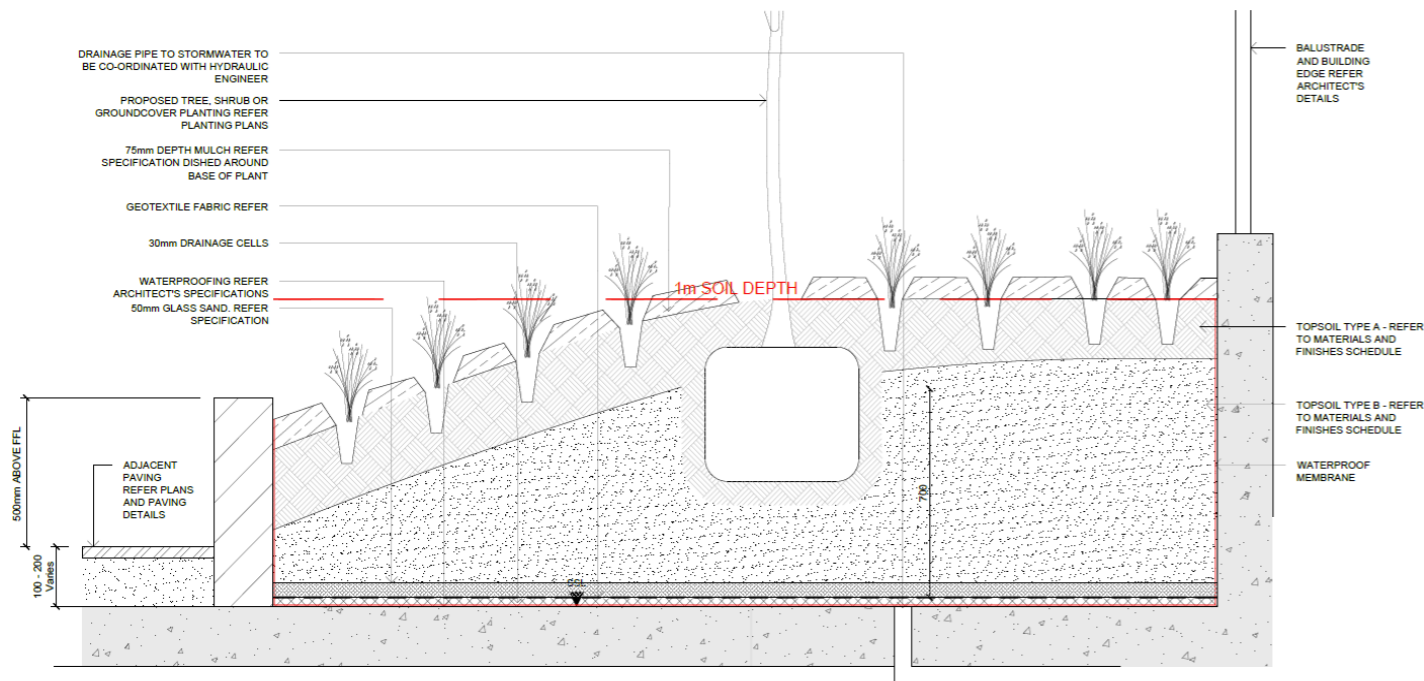


MATERIALITY

MATERIALS PALETTE



TYPICAL TREE PLANTING ON PODIUM



INDICATIVE PLANT SCHEDULE

| BOTANICAL NAME | COMMON NAME | MATURE HxW (m) | SPACING | INSTALLATION POT SIZE |
|--|--------------------------------|----------------|-------------------|-----------------------|
| Trees | | | | |
| <i>Citrus limon</i> | Lemon Tree | 5x4m | As shown | 45L |
| <i>Cupaniopsis anacardioides</i> | Tuckeroo | 8x5m | As shown | 45L |
| <i>Jacaranda mimosifolia</i> | Jacaranda | 10x7m | As shown | 100L |
| <i>Lagerstroemia indica</i> 'Natchez' | Crepe Myrtle | 6x4m | As shown | 45L |
| <i>Malus domestica</i> | Apple Tree | 3x4m | 1000mm | 45L |
| <i>Olea europaea</i> | Olive Tree | 8x4m | As shown | 100L |
| <i>Pyrus communis</i> | European pear | 3x4m | 1000mm | 45L |
| <i>Rhapis excelsa</i> | Broadleaf Lady Palm | 3x1m | As shown | 45L |
| <i>Syzygium smithii</i> | Lilly Pilly | 8x6m | As shown | 45L |
| Street Trees | | | | |
| <i>Robinia psuedoacacia</i> 'Frisia' | Golden Robina | 9x6m | As shown | 45L |
| <i>Koelreuteria paniculata</i> | Golden Rain Tree | 7x7m | As shown | 45L |
| Shrubs (1.5-3m) | | | | |
| <i>Azalea rhododendron</i> | Rhododendron | 3x3m | 2/m ² | 300mm |
| <i>Brunfelsia bonodora</i> | Yesterday Today Tomorrow | 3x2m | 2/m ² | 300mm |
| <i>Callistemon citrinus</i> | Crimson Bottlebrush | 3x2m | As shown | 300mm |
| <i>Camellia sasanqua</i> | Camellia | 4x2m | 2/m ² | 45L |
| <i>Syzygium australe</i> 'Select form' | Select Form Lilly Pilly | 3x1.5m | 3/m ² | 300mm |
| Low Shrubs (1-1.5m) | | | | |
| <i>Acanthus mollis</i> | Oyster Plant | 2x0.5m | As shown | 200mm |
| <i>Agapanthus orientalis</i> | African Lily | 1x0.8m | 4/m ² | 200mm |
| <i>Anemone x hybrida</i> | Japanese Windflowers | 1x0.5m | 6/m ² | 200mm |
| <i>Buxus japonica</i> | Japanese Box Hedge | 1.5x1.0m | 2/m ² | 200mm |
| <i>Echium candicans</i> | Pride of Madeira | 1.8x1.2m | As shown | 200mm |
| <i>Gardenia augusta</i> 'Florida' | Fragrant Gardenia | 1x1m | As shown | 200mm |
| <i>Guzmania bromeliad</i> | Bromeliad | 0.5x0.5m | 6/m ² | 150mm |
| <i>Ozothamnus diosmifolius</i> | Riceflower | 1.5x1m | 4/m ² | 200mm |
| <i>Raphiolepis indica</i> | White Indian Hawthorn | 1.0x1.0m | 2/m ² | 300mm |
| <i>Raphiolepis indica</i> 'Oriental pearl' | Oriental Pearl Indian Hawthorn | 1.0x1.0m | 2/m ² | 200mm |
| <i>Rosmarinus officinalis</i> | Rosemary | 1.5x0.9m | 3/m ² | 150mm |
| <i>Sansevieria trifasciata</i> | Mother in Law's Tongue | 1.5x0.5m | 6/m ² | 150mm |
| <i>Teucrium fruticans</i> | Silver Germander | 1.2x1.8m | 2/m ² | 200mm |
| Groundcover | | | | |
| <i>Clivia miniata</i> | Clivia / Kaffir Lily | 0.4x0.4m | 8/m ² | 150mm |
| <i>Convolvulus sabatius</i> | Bindweed | 0.3x1.5m | 5/m ² | 150mm |
| <i>Dianella caerulea</i> | Blue flax-lily | 0.5x0.5m | 6/m ² | 300mm |
| <i>Dichondra repens</i> | Kidney Weed | 0.1x1.0m | 4/m ² | 150mm |
| <i>Erigeron karvinskianus</i> | Seaside Daisy | 0.6x0.3m | 4/m ² | 150mm |
| <i>Liriope muscari</i> 'evergreen giant' | Lily Turf | 0.5x0.7m | 6/m ² | 150mm |
| <i>Lomandra longifolia</i> 'Tanika' | Tanika | 0.5x0.7m | 6/m ² | 150mm |
| <i>Ophiopogon japonicus</i> | Mondo Grass | 0.2x0.15m | 11/m ² | 100mm |
| <i>Philodendron xanadu</i> | Xanadu | 0.6x0.6m | 4/m ² | 150mm |
| <i>Trachelospermum asiaticum</i> | Japanese Star Jasmine | 0.3xProstrate | 3/m ² | 200mm |
| Climbers/trailers | | | | |
| <i>Pandorea pandorana</i> | Wonga Wonga Vine | 5x3m | 300mm | 150mm |
| <i>Clematis aristata</i> | Australian Clematis | 0.3xProstrate | 300mm | 150mm |