



POWERHOUSE PARRAMATTA
**DESIGN
INTEGRITY
REPORT**



Museum of
Applied Arts
& Sciences

CONTENTS

1. Introduction 3

2. Design Amendments 3

 2.1 St George's Terrace 3

 2.2 St George's Terrace Integration 3

 2.3 Roof Terrace 4

3. Design Development 6

4. Conclusion 6

1. INTRODUCTION

This report outlines the design integrity process and review that has occurred to support a modification application for Powerhouse Parramatta SSD-10416 for amendment of the pavilion roof and fit out and use of St George's Terrace.

Condition A9(b)(v) requires:

The established Design Integrity Panel (DIP) outlined in the DER shall be retained throughout the detailed design and construction phases of the development. In addition ... prior to the lodgement of any planning modification, which modifies the design.

This report includes the Design Integrity Panel's review of the design amendments proposed in relation to the pavilion roof and the fit out and use of St George's Terrace. The report does not represent a finalisation of the design development process nor completion of the Panel's role in ensuring design integrity for these components of the project. The Powerhouse Parramatta Design Integrity Panel will remain an integral component of the project, ensuring the Powerhouse Parramatta design develops in line with the intent of the competition winning design.

2. DESIGN AMENDMENTS

The Design Integrity Panel has continued its role of critical assessment of design development for Powerhouse Parramatta in relation to the proposed design amendments for St George's Terrace and the roof top pavilion. An overview of the issues reviewed, and resolutions achieved through the input of the Panel is as follows:

2.1 ST GEORGE'S TERRACE

The retention of St George's Terrace has been designed to integrate with the remainder of the Powerhouse Parramatta precinct through both design and functionality. The Panel notes that whilst the heritage significance of the terrace is important to the Parramatta CBD landscape, the interior of the terraces have been highly modified, with little to no items of significance remaining.

The proposal to transform the terrace to a flexible, double height space is considered in-keeping with the ethos of the remainder of the Powerhouse Parramatta design. A minimal design palette mirrors the eastern and western museum buildings and creates a functional adaptive reuse of the heritage structure.

The Panel note that the structural steel support will interpret the original terrace party wall lines and a glazed and operable northern façade will create activation between the terrace and PS1. Further the replacement of existing (non-heritage) doors and windows along Phillip Street with fixed glazing will activate the streetscape with views into the museum activities hosted within.

2.2 ST GEORGE'S TERRACE INTEGRATION

It is noted that condition C3 of the consent requires exploration of options to amend the design of the ground floor of Presentation Space 1 to integrate with the terrace. The Panel considers that the proposed modification for St George's Terrace meets the objectives of integration with the broader Powerhouse Parramatta precinct in terms of design and functionality. The panel does not support the modification of Presentation Space 1 as:

- Retention of the terrace enables the continuation of the laneway narrative within Parramatta. Its proximity to the eastern building allows the further development of a hierarchy of pedestrian connections through the CBD that are present in surrounding areas.
- The operational requirements for Presentation Space 1 to enable functioning as a museum space is paramount. Such criteria should be weighted highly in any assessment of modification of the built form to integrate the terraces.
- The cost of any operable façade for the southern wall of Presentation Space 1 should be considered in the context of their utility.
- Through design development, integration of the spaces can be achieved through material selection, programming of the spaces and the detailed plaza design.

The Panel further notes that the Museum of Applied Arts and Sciences has noted any design amendments to Presentation Space 1 will significantly compromise operations. Whilst a design for operability of the Presentation Space 1 southern façade may be desirable, this should not be considered where the functionality of the space would be compromised.

2.3 ROOF TERRACE

The rooftop terrace pavilion roof structure is proposed to be increased in size in order to create more functional space atop the Eastern Building. The expansion of the pavilion will enable greater all-weather use of the rooftop allowing the space to become more functional within the Powerhouse program.

Figure 1.
Modified roof top design

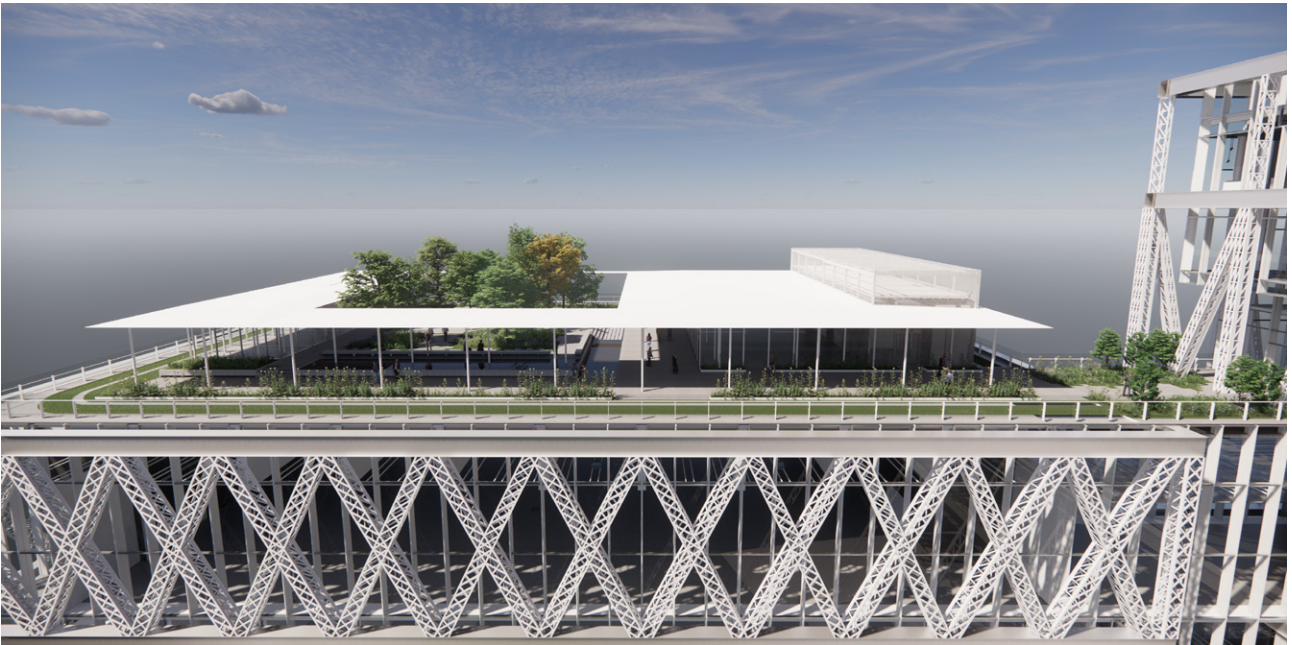


Figure 2.
Modified roof top design



The Panel has reviewed the proposed design for the expanded pavilion and notes that:

- The structure remains well below the permissible height limit;
- The increase of the pavilion will enable it to service a wider array of functions;
- The expanded roof structure is light-weight and minimal in design and in-keeping with the remainder of the building; and
- The proposal represents a considered development of the design.

Figure 3.
Approved Development



Figure 4.
Modified Design



3. DESIGN DEVELOPMENT

This Design Integrity Report provides the Panel's concurrence that the amended Powerhouse Parramatta design for the purposes of this modification maintains the integrity of the competition winning scheme. The Design Integrity Panel will review design development of St George's Terrace and roof top pavilion along with the entire Powerhouse Parramatta design development.

4. CONCLUSION

The Design Integrity Panel confirm that the design as presented in modification application, maintains the design integrity of the competition winning design.

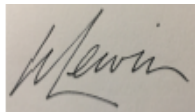
DESIGN INTEGRITY PANEL



Naomi Milgrom AC (Chair)



Kim Crestani (Panel Member)



Wendy Lewin (Panel Member)



Peter Poulet (Panel Member)



Museum of
Applied Arts
& Sciences