

NORTHSIDE WEST CLINIC

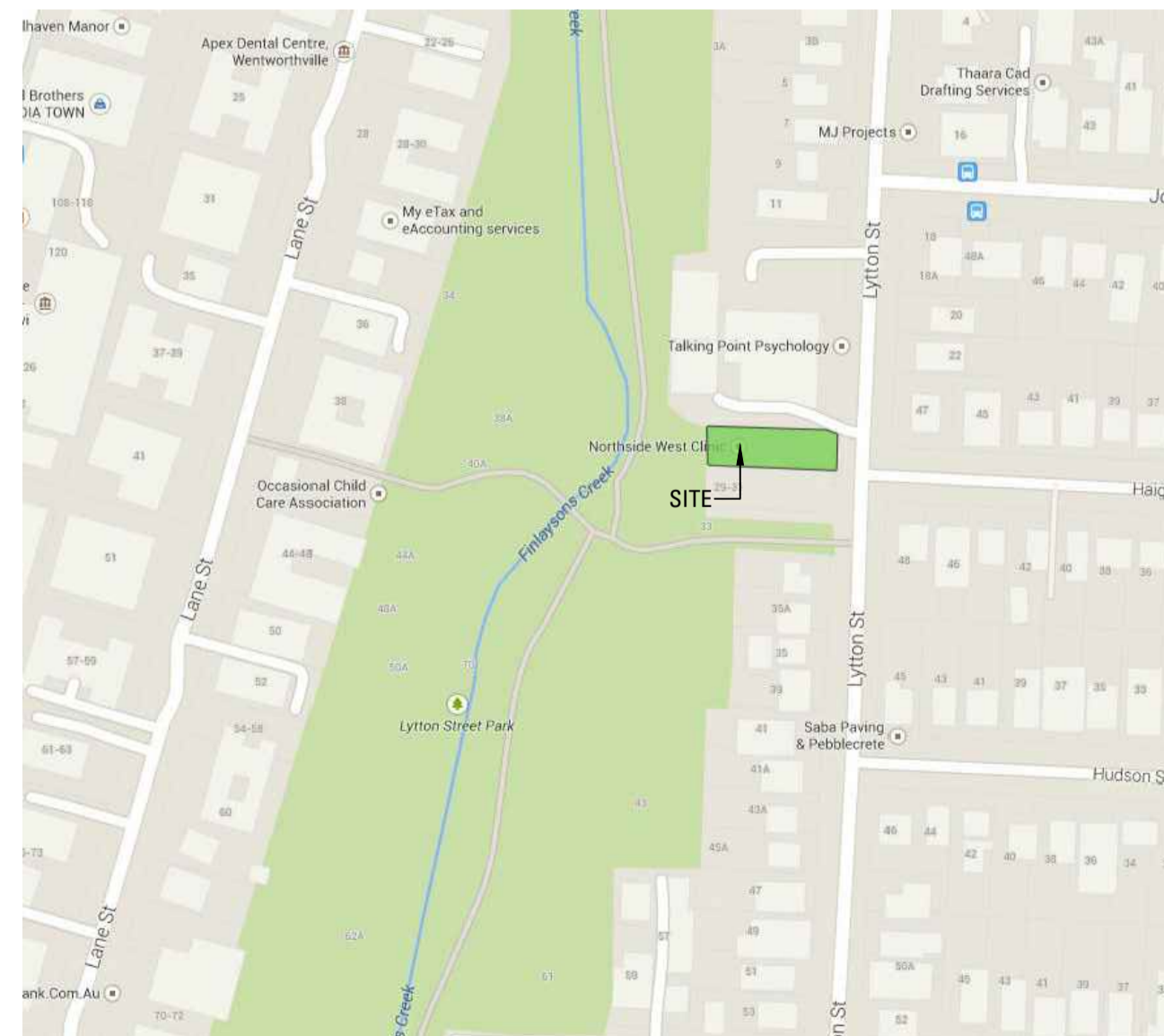
23-27 LYTTON STREET, WENTWORTHVILLE NSW

DRAWING SCHEDULE

DRAWING NO.	DRAWING TITLE
000	COVER SHEET
001	PLANTING SCHEDULE
010	EXTENT OF WORKS - GROUND LEVEL
011	EXTENT OF WORKS - LEVEL 1
012	EXTENT OF WORKS - LEVEL 2
013	EXTENT OF WORKS - LEVEL 3
050	TREE REMOVAL AND RETENTION
101	LANDSCAPE MASTERPLAN - GROUND LEVEL
102	LANDSCAPE MASTERPLAN - LVL 1 HANGING GARDEN
103	DETAIL PLAN - LVL 1 HANGING GARDEN
104	LANDSCAPE MASTERPLAN - LVL 1 INNER COURTYARD
105	LANDSCAPE MASTERPLAN - LVL 2 COURTYARD
106	LANDSCAPE MASTERPLAN - LVL 3 COURTYARD
601	LANDSCAPE DETAILS - HARDWORKS
701	LANDSCAPE DETAILS - SOFTWORKS

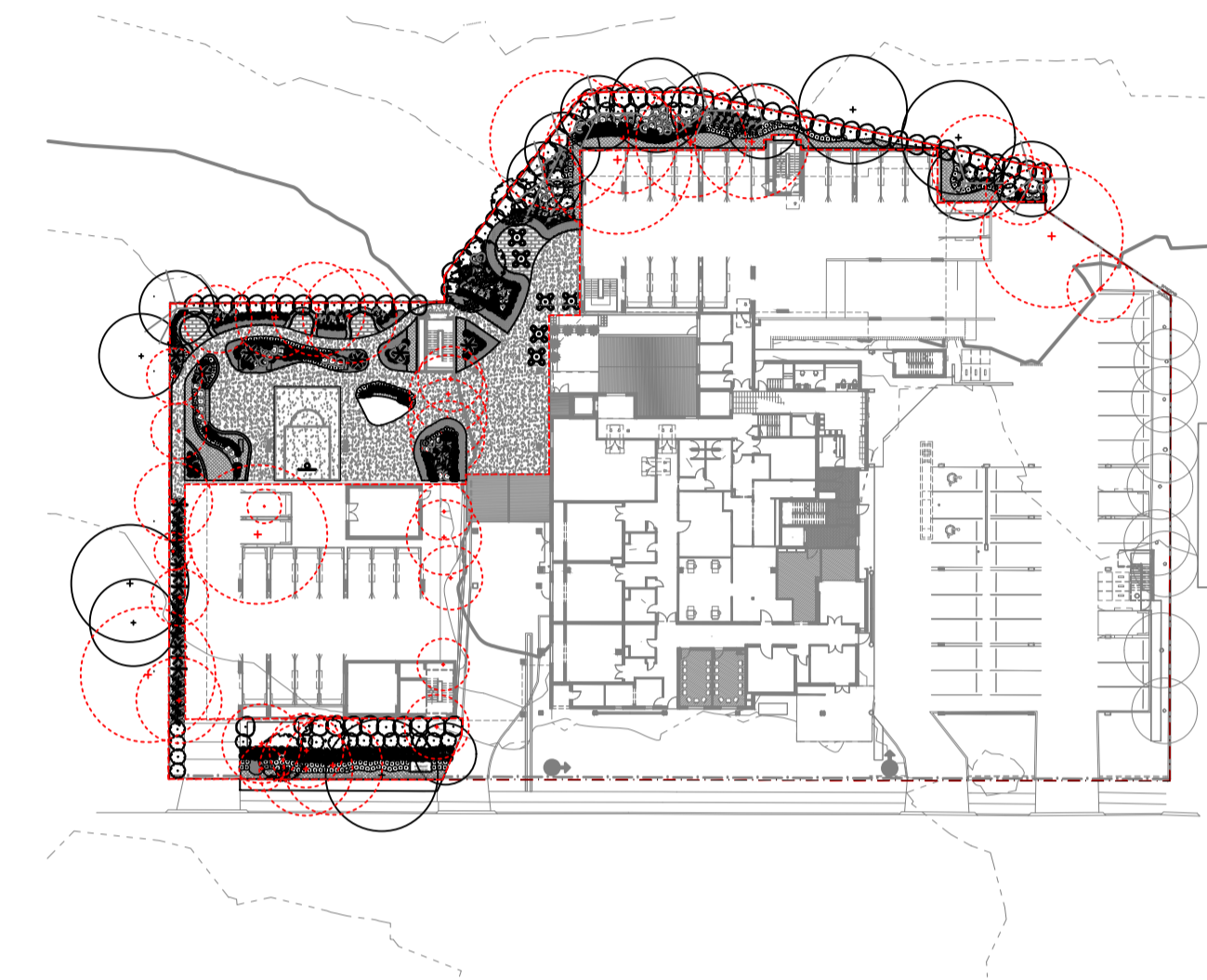
LOCATION PLAN

SCALE: 1:1000@A1

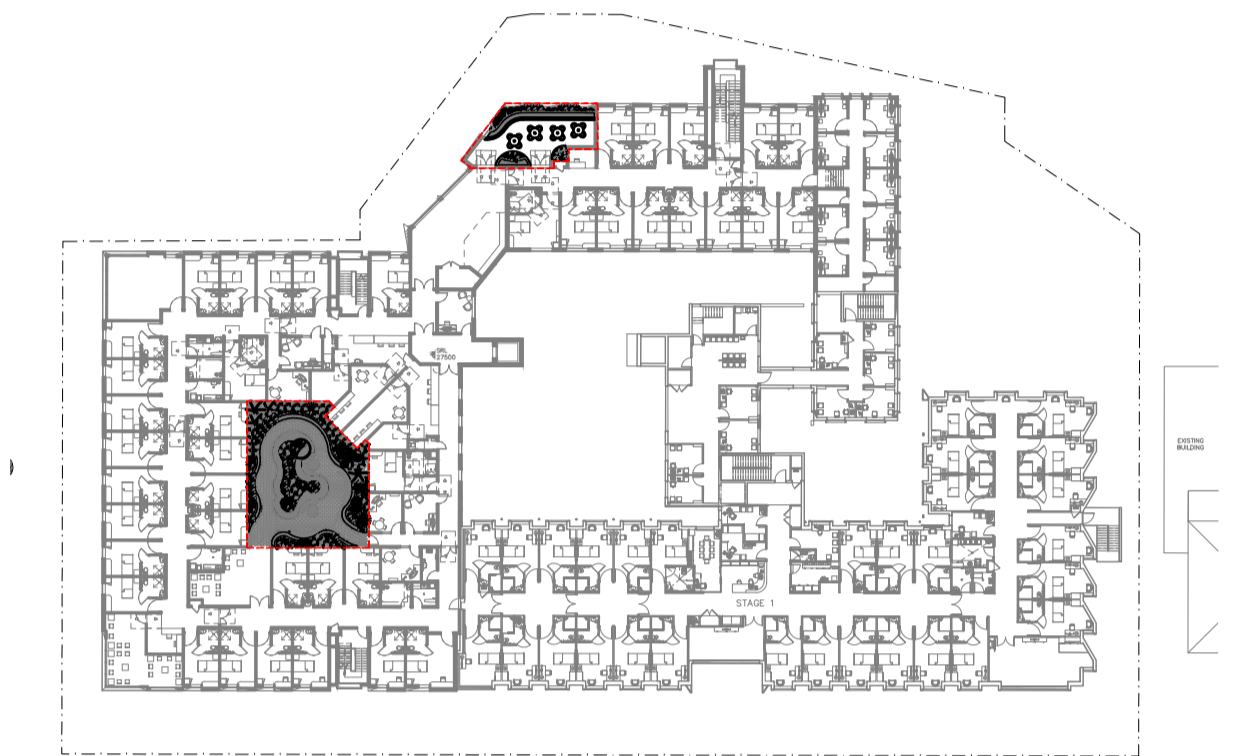


KEY PLAN

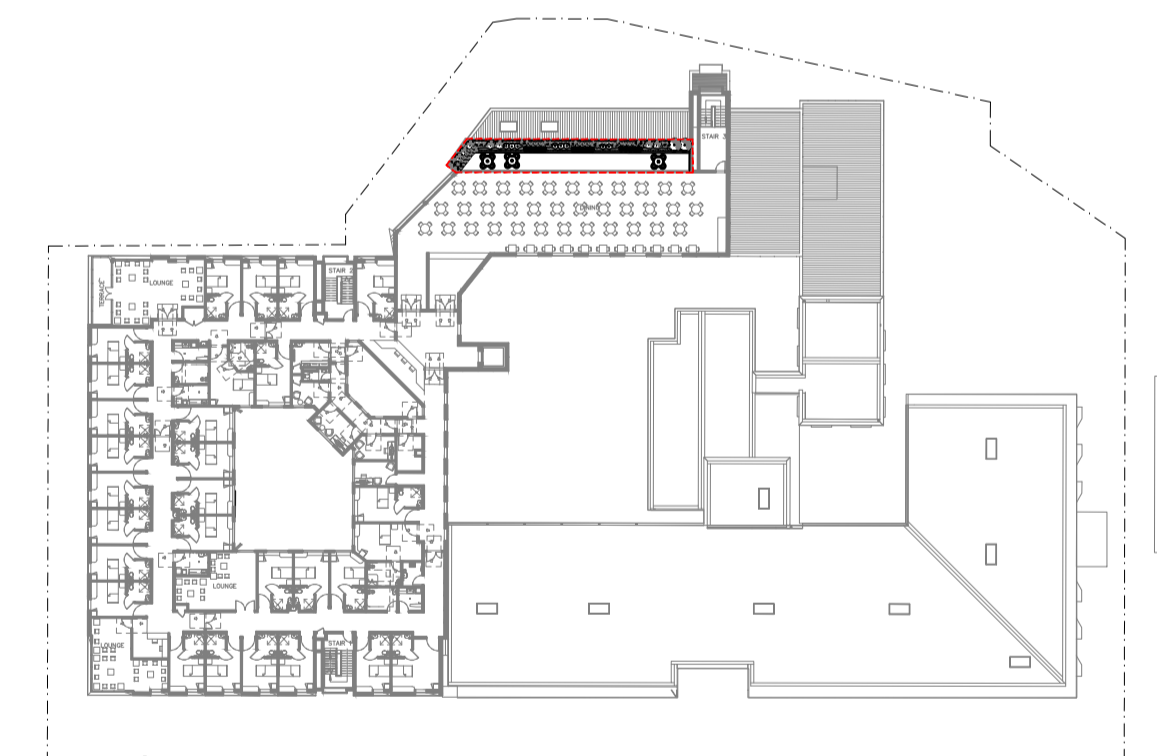
SCALE: 1:750@A1



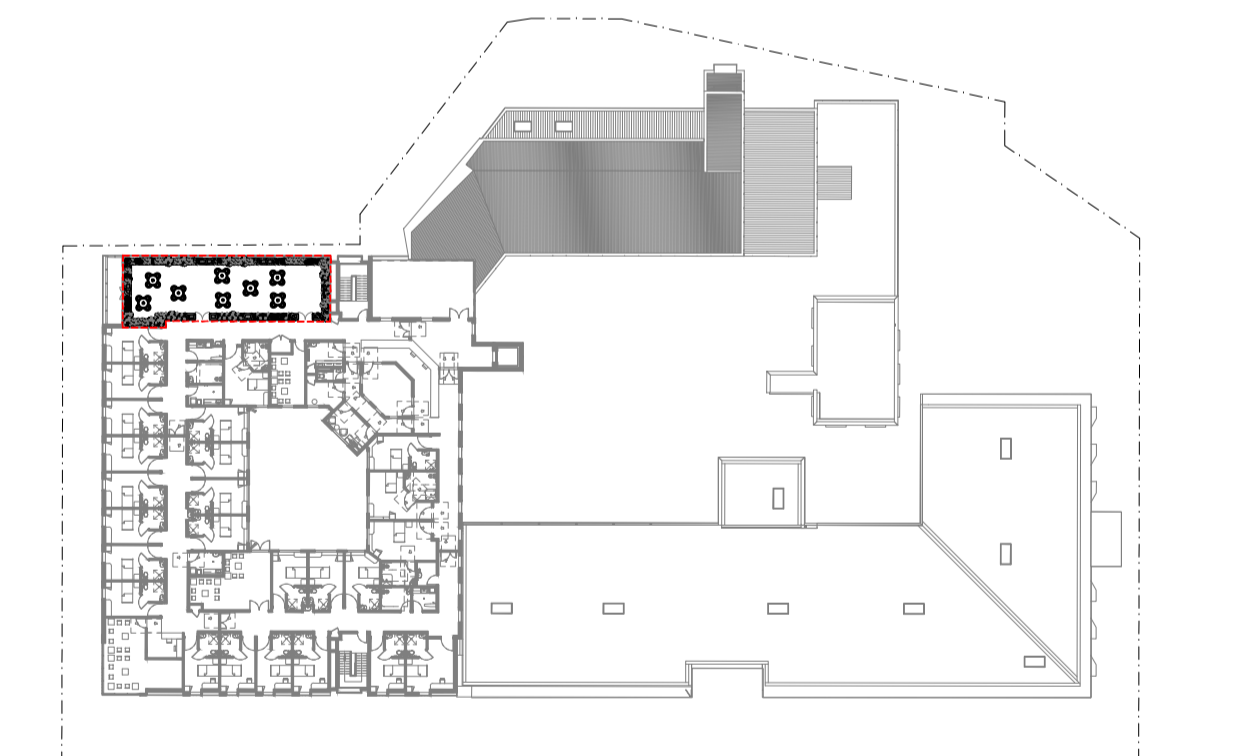
GROUND LEVEL



LEVEL 1



LEVEL 2



LEVEL 3

ARCADIA

NORTHSIDE WEST STAGE 2
DEVELOPMENT APPLICATION

PREPARED BY Arcadia Landscape Architecture
CLIENT Ramsay Health Care Ltd
ARCHITECT ERILYAN

DATE 05.07.2022
SCALE
ISSUE F

Copyright remains the property of Arcadia Landscape Architecture Pty Ltd. Use only figured dimensions. Any other required dimensions are to be referred to and supplied by the landscape architect. All discrepancies to be referred to the project manager and Arcadia Landscape Architecture Pty Ltd prior to construction. Ensure compliance with the Building Code of Australia and all relevant Australian Standards and Authorities

GROUND LEVEL

CODE	BOTANIC NAME	COMMON NAME	MATURE SIZE (h x w) (m)	PROPOSED POT SIZE	QUANTITY
TREES & PALMS					
Cm	<i>Corymbia maculata</i>	Spotted Gum	25 x 15	200L	8
Mg	<i>Magnolia grandiflora</i> 'Little Gem'	Dwarf Magnolia	5-8 x 3-5	75L	5
SHRUBS & ACCENTS					
Dt	<i>Dianella Tasred</i>	Flax Lily	0.6 x 0.6	150mm	161
Lgs	<i>Leionema</i> 'Green Screen'	Green Screen	2 x 2	200mm	69
Ph	<i>Phormium</i> 'Wildwood'	Flax	1.5 x 1.5	200mm	32
Mt	<i>Metrosideros</i> 'Tahiti'	Tahiti Christmas Bush	1 x 1	200mm	33
GRASSES & RUSHES					
Leg	<i>Liriope muscari</i> 'Evergreen Giant'	Evergreen Gian	0.7 x 0.7	150mm	86
Lh	<i>Lomandra hystrix</i>	Mat Rush	1.5 x 1.5	150mm	37
Lm	<i>Liriope muscari</i>	Lilyturf	0.5 x 0.5	150mm	216
FERNS & CYCADS					
An	<i>Asplenium nidus</i>	Birds Nest Fern	1.5 x 1.5	200mm	35
Cci	<i>Cyathea cooperi</i>	Tree Fern	5 x 2	300mm	16
Dp	<i>Davallia pyxidata</i>	Hares Foot Fern	1 x 1	300mm	78
Nc	<i>Nephrolepis cordifolia</i>	Tuber Ladder Fern	0.6 x 0.6	300 mm	116
GROUNDCOVERS & CLIMBERS					
Hv	<i>Hardenbergia violacea</i>	Purple Coral Pea	0.25 x 1	150mm	192
Hps	<i>Hardenbergia</i> 'Purple Spray'	Purple Spray	0.25 x 1	150mm	290
Vh	<i>Viola hederacea</i>	Australian Viola	0.2 x 1	150mm	359

LEVEL 1 HANGING GARDEN

CODE	BOTANIC NAME	COMMON NAME	MATURE SIZE (h x w) (m)	PROPOSED POT SIZE	QUANTITY
FERNS & CYCADS					
An	<i>Asplenium nidus</i>	Birds Nest Fern	1.5 x 1.5	200mm	65
Bs	<i>Blechnum</i> 'Silver Lady'	Regal Silver Lady Fern	1.2 x 1	200mm	31
Cci	<i>Cyathea cooperi</i>	Tree Fern	5 x 2	100L	5
Da	<i>Dicksonia antarctica</i>	Soft Tree Fern	1.5-15 x 1-2	100L	7
Zf	<i>Zamia furfuracea</i>	Cardboard Palm	1 x 2	300 mm	28
GROUNDCOVERS & CLIMBERS					
Ca	<i>Cissus antarctica</i>	Kangaroo Vine	0.3-4 x 0.5-6	200mm	4
BV	<i>Begonia summerwings</i> 'Vanilla'	Begonia summerwings	0.4 x 0.4	200mm	8
Ea	<i>Epipremnum aureum</i>	Devil's Ivy	0.2 x 1	200mm	2
Md	<i>Microsorium diversifolium</i>	Kangaroo Fern	0.3 x 0.6	200mm	4
NFR	<i>Nephrolepis</i> 'Fluffy Ruffles'	Boston Fern	0.45 x 0.6	200mm	8
Pp	<i>Pandorea pandorana</i>	Wonga Wonga Vine	2-20 x 1-9	140mm	3
Vh	<i>Viola hederacea</i>	Australian Viola	0.2 x 1	140mm	168

LEVEL 1 INNER COURTYARD

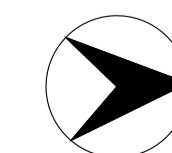
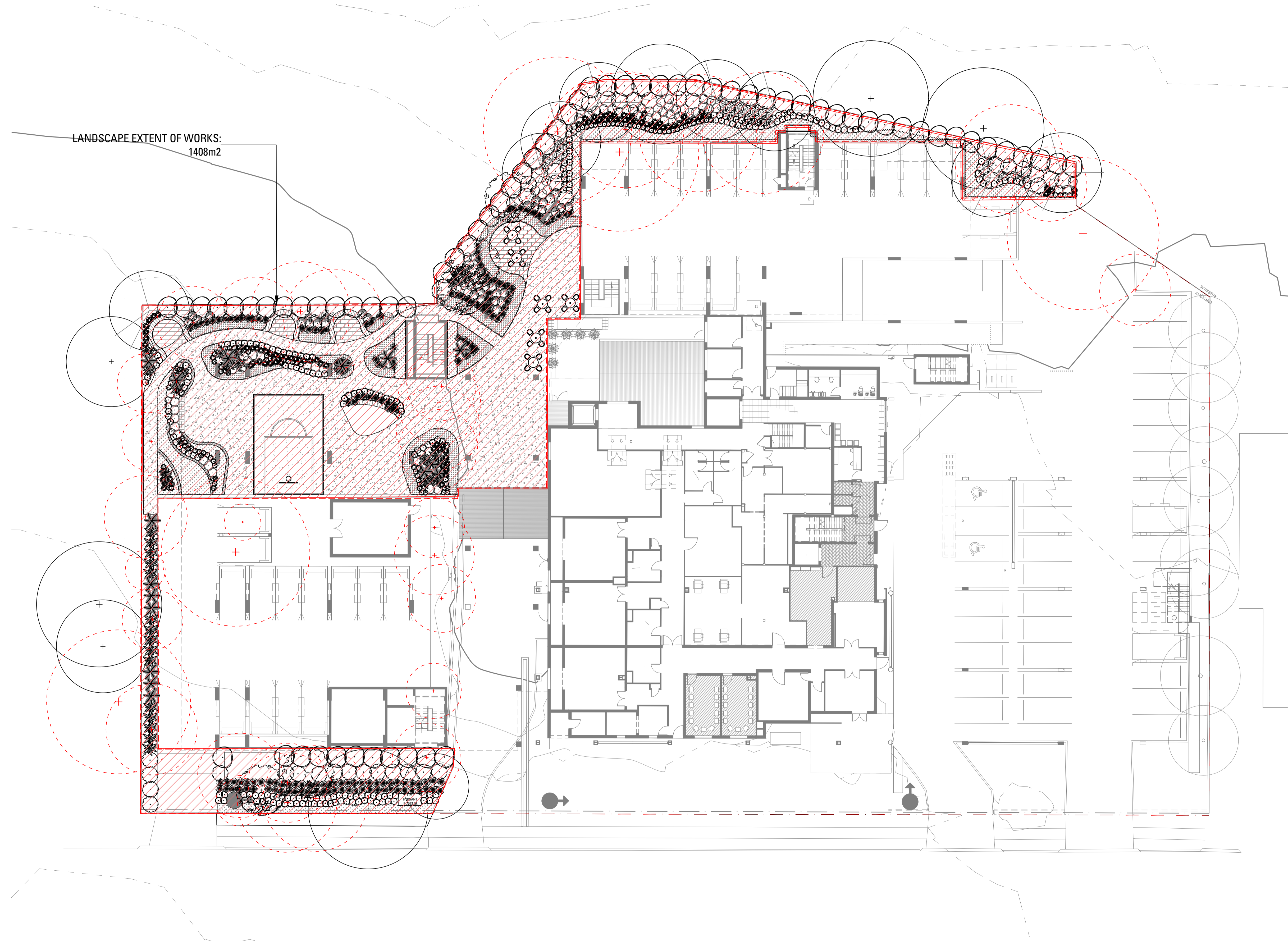
CODE	BOTANIC NAME	COMMON NAME	MATURE SIZE (h x w) (m)	PROPOSED POT SIZE	QUANTITY
PERENNIAL					
Ae	<i>Aspidistra elatior</i>	Cast Iron Plant	0.5-1.2 x 1.5	200mm	7
Dis	<i>Dieffenbachia</i> spp.	Dumb Cane	0.4 x 0.4	200mm	8
Ep	<i>Epipremnum pinnatum</i>	Dragon Tail Plant	1 x 1	200mm	6
FERNS & CYCADS					
Ads	<i>Adiantum</i> spp.	Maiden Hair Fern	0.5 x 0.5	200mm	8
GROUNDCOVERS & CLIMBERS					
Pp	<i>Pandorea pandorana</i>	Wonga Wonga Vine	2-20 x 1-9	140mm	13

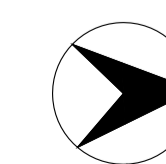
LEVEL 2 COURTYARD

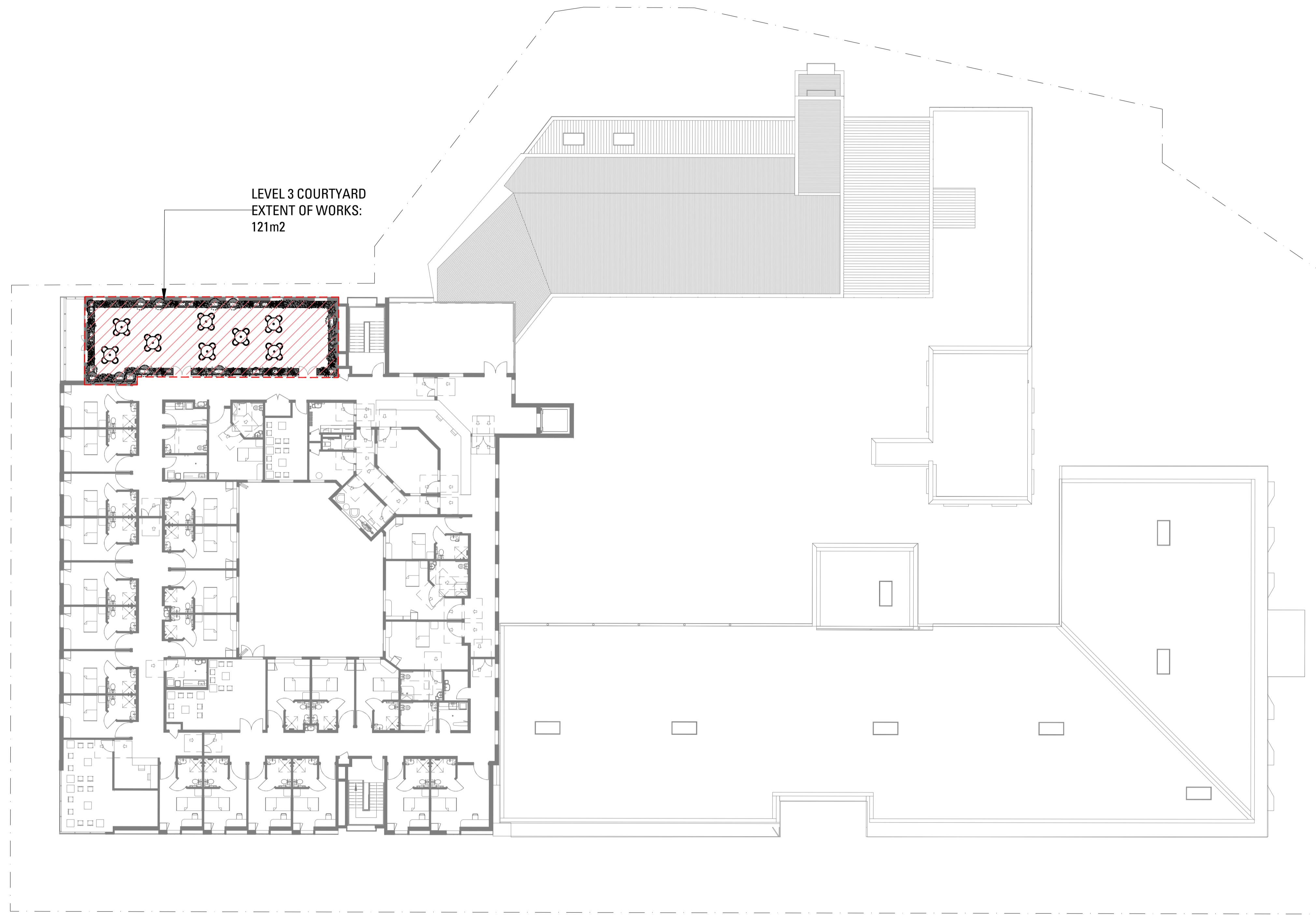
CODE	BOTANIC NAME	COMMON NAME	MATURE SIZE (h x w) (m)	PROPOSED POT SIZE	QUANTITY
SHRUBS & ACCENTS					
Ab	<i>Anigozanthos</i> 'Bush Blitz'	Kangaroo Paw	0.8 x 0.5	150mm	15
Wg	<i>Westringia</i> 'Grey Box'	Tahiti Christmas Bush	1 x 1	200mm	7
GRASSES & RUSHES					
Lta	<i>Lomandra tanika</i>	Tanika Mat Rush	0.6 x 0.6	150mm	13
Lm	<i>Liriope muscari</i>	Lilyturf	0.5 x 0.5	150mm	8
Pan	<i>Pennisetum alopecuroides</i> 'nafray'	Swamp Foxtail Grass	0.7 x 0.8	150mm	19
GROUNDCOVERS & CLIMBERS					
Dd	<i>Dampiera diversifolia</i>	Dampiera	0.30 x 1	150mm	18
Hv	<i>Hardenbergia violacea</i>	Purple Coral Pea	0.25 x 1	150mm	36

LEVEL 3 COURTYARD

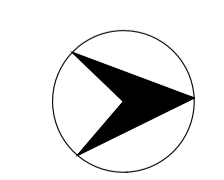
CODE	BOTANIC NAME	COMMON NAME	MATURE SIZE (h x w) (m)	PROPOSED POT SIZE	QUANTITY
SHRUBS & ACCENTS					
Ab	<i>Anigozanthos</i> 'Bush Blitz'	Kangaroo Paw	0.8 x 0.5	150mm	28
Wg	<i>Westringia</i> 'Grey Box'	Tahiti Christmas Bush	1 x 1	200mm	12
GRASSES & RUSHES					
Db	<i>Dietes bicolor</i>	Flax Lily	0.6 x 0.6	150mm	22
Lta	<i>Lomandra tanika</i>	Tanika Mat Rush	0.6 x 0.6	150mm	14
Lm	<i>Liriope muscari</i>	Lilyturf	0.5 x 0.5	150mm	29
Pan	<i>Pennisetum alopecuroides</i> 'nafray'	Swamp Foxtail Grass	0.7 x 0.8	150mm	15
GROUNDCOVERS & CLIMBERS					
Dd	<i>Dampiera diversifolia</i>	Dampiera	0.30 x 1	150mm	5
Hv	<i>Hardenbergia violacea</i>	Purple Coral Pea	0.25 x 1	150mm	8




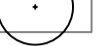


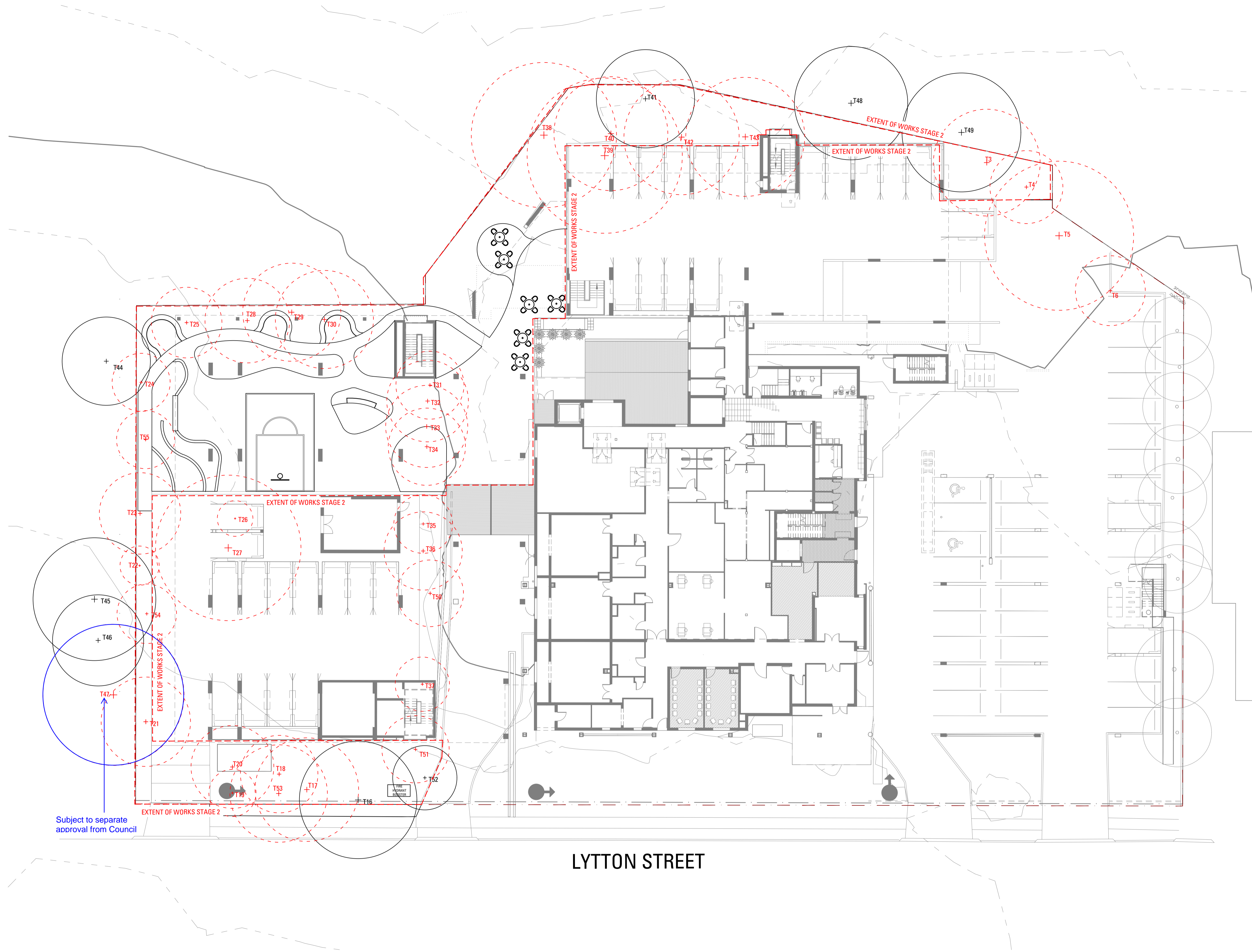


LEVEL 3 COURTYARD
EXTENT OF WORKS:
121m2

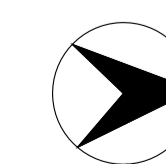


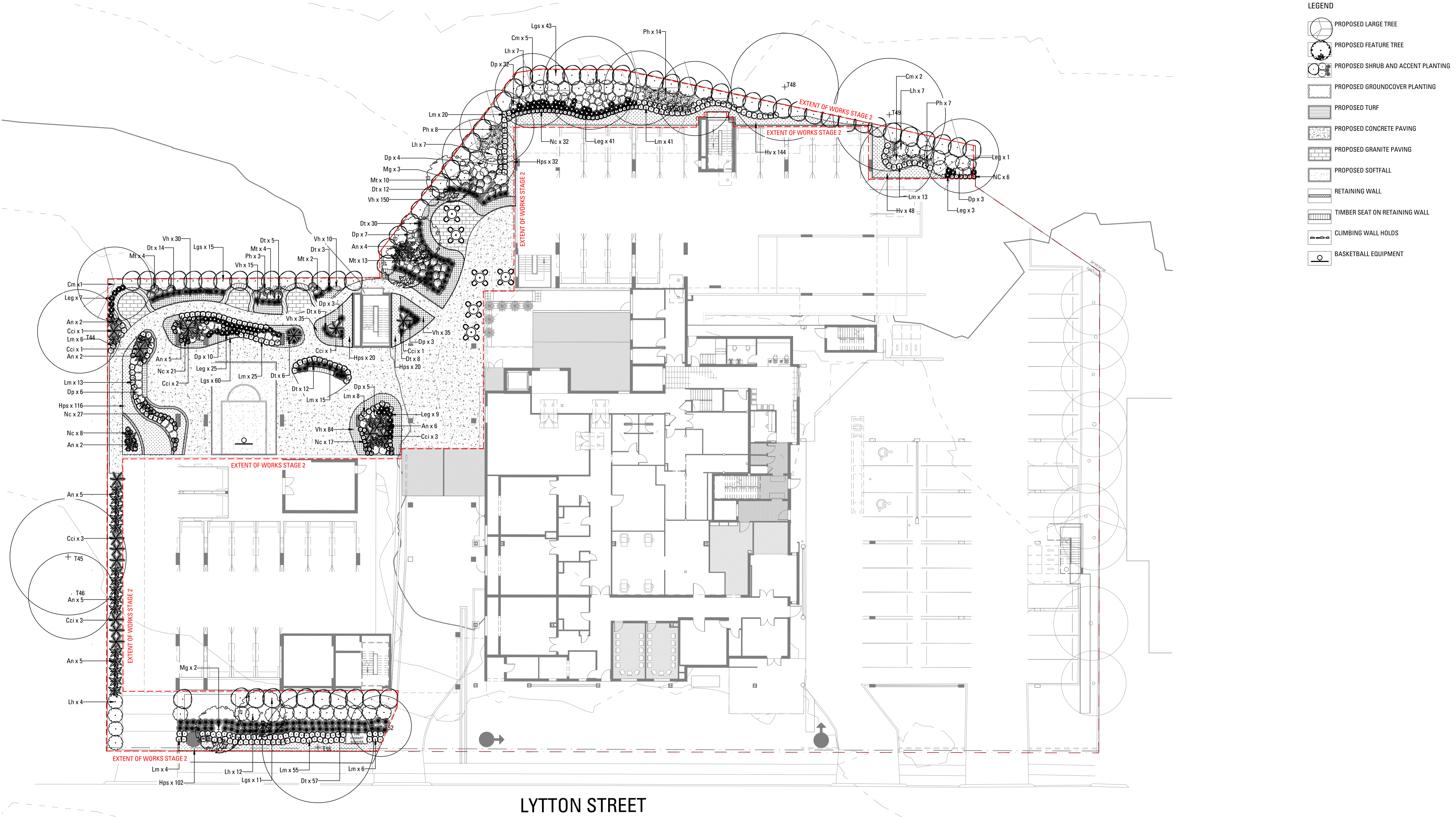
LEGEND

-  EXISTING TREES TO BE REMOVED
30 existing trees to be removed
-  EXISTING TREES TO BE RETAINED
14 existing trees to be retained

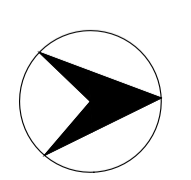


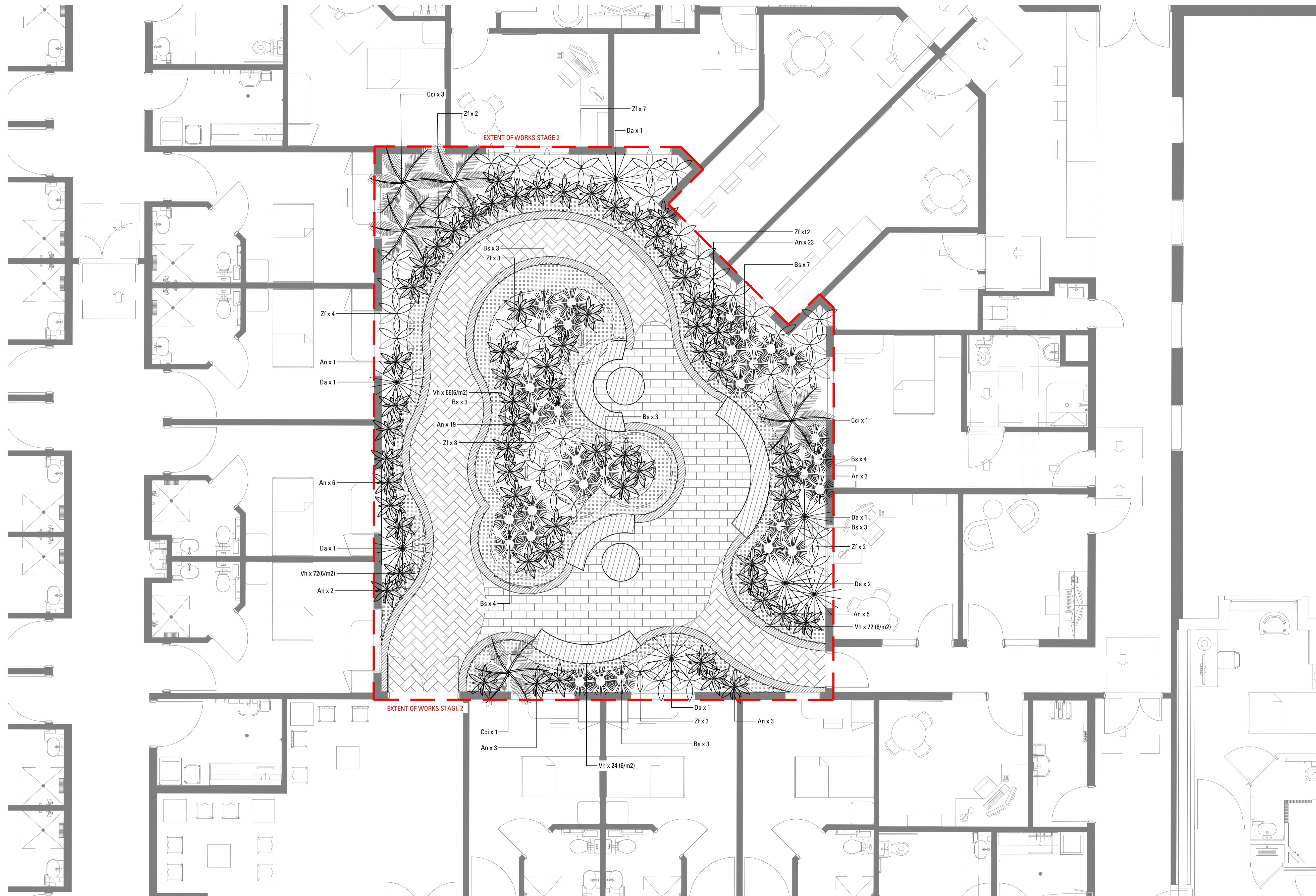
LYTTON STREET



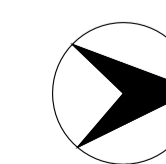


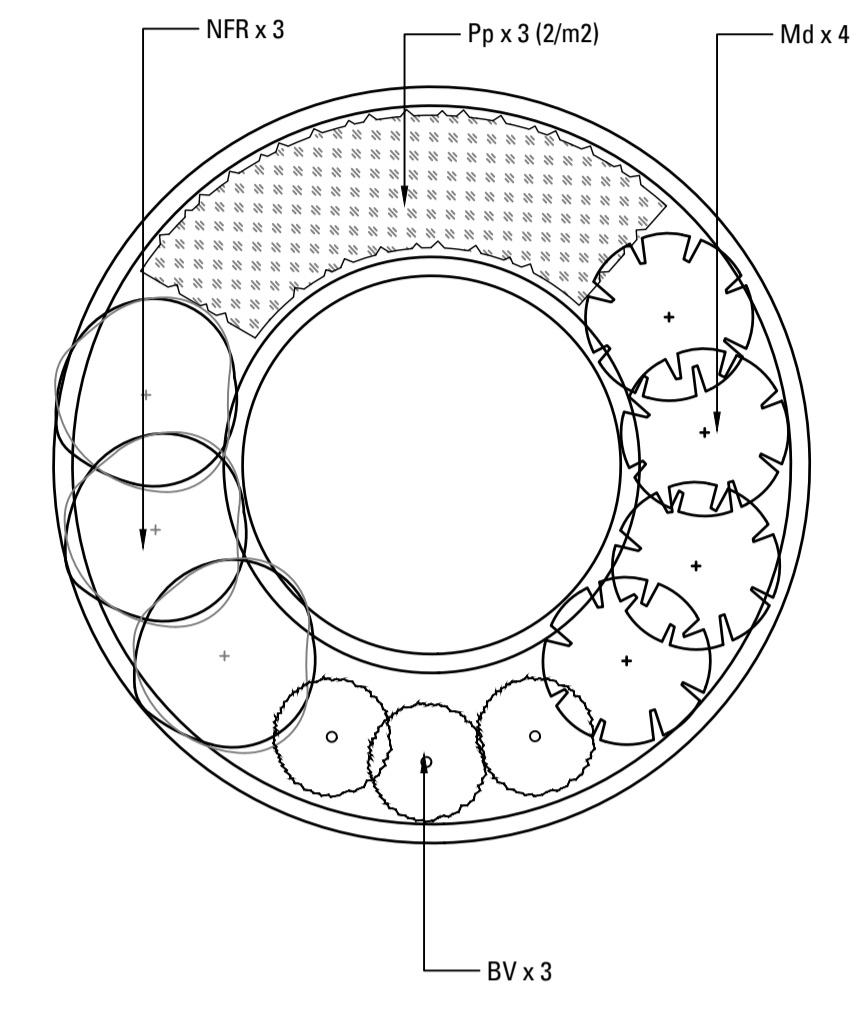
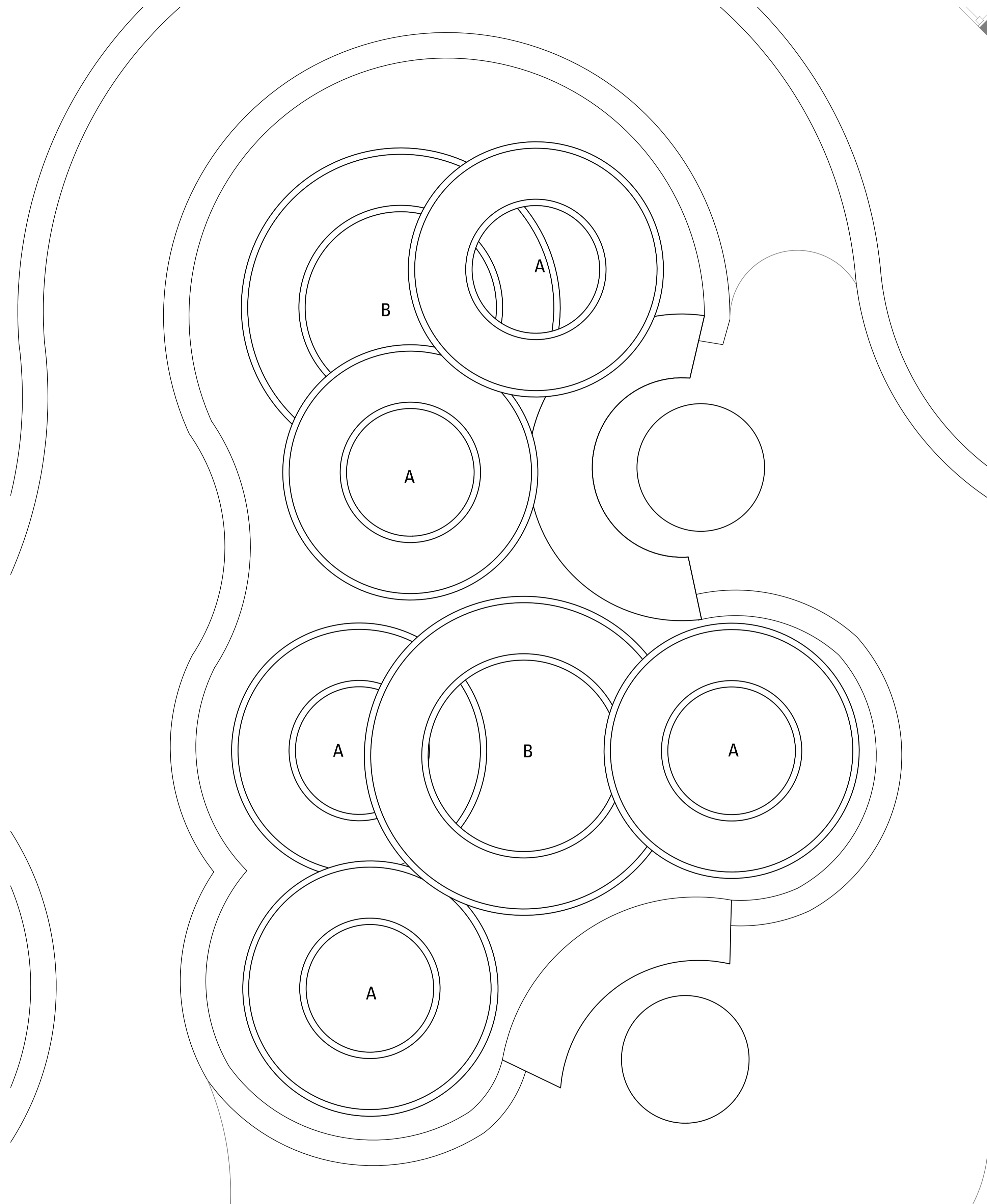
- LEGEND
- PROPOSED LARGE TREE
 - PROPOSED FEATURE TREE
 - PROPOSED SHRUB AND ACCENT PLANTING
 - PROPOSED GROUNDCOVER PLANTING
 - PROPOSED TURF
 - PROPOSED CONCRETE PAVING
 - PROPOSED GRANITE PAVING
 - PROPOSED SOFTFALL
 - RETAINING WALL
 - TIMBER SEAT ON RETAINING WALL
 - CLIMBING WALL HOLDS
 - BASKETBALL EQUIPMENT



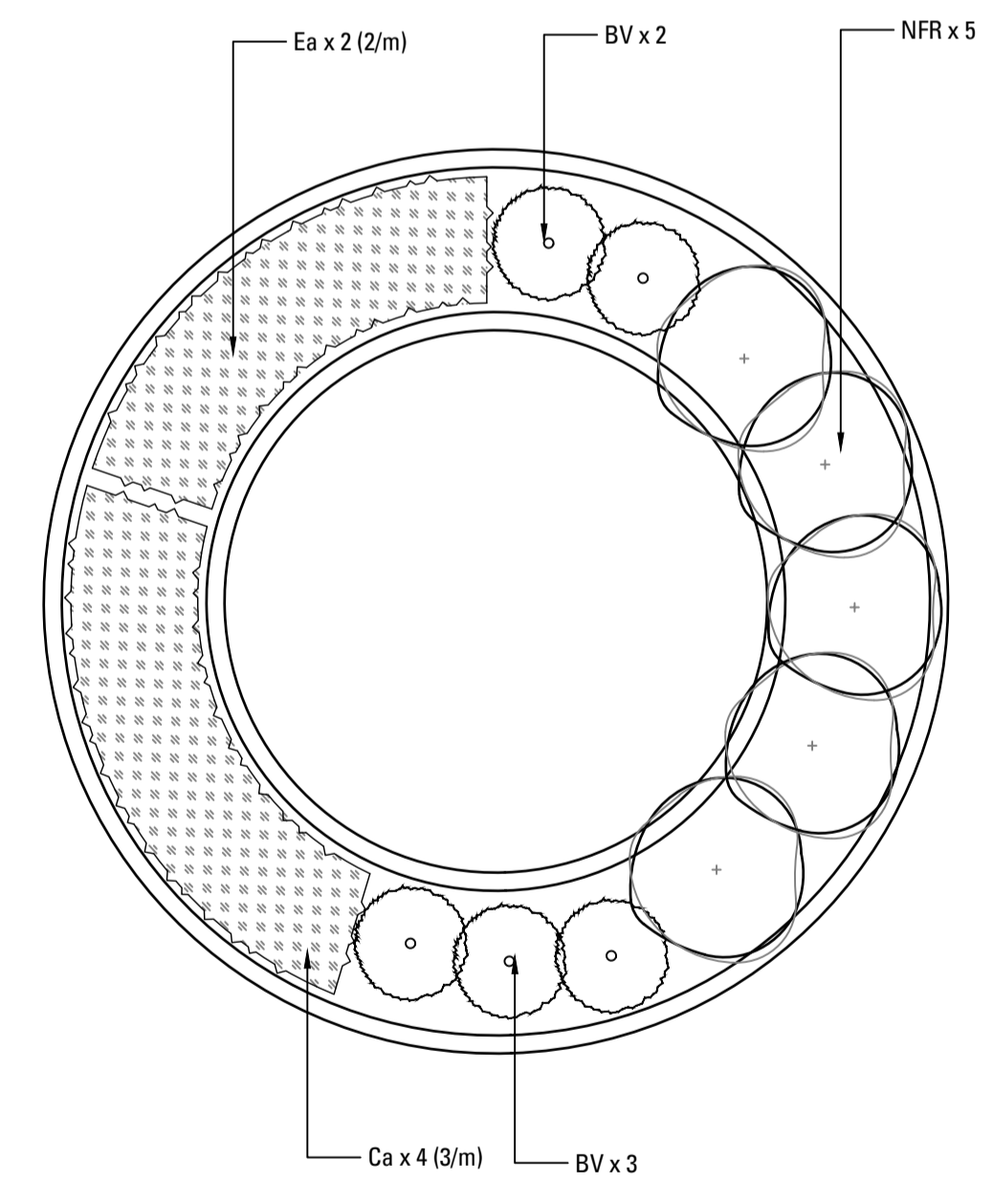


- LEGEND**
- PROPOSED GRANITE PAVING TYPE 1
 - PROPOSED GRANITE PAVING TYPE 2
 - RETAINING WALL
 - TIMBER SEAT
 - PROPOSED SHRUB AND ACCENT PLANTING
 - PROPOSED GROUNDCOVER PLANTING

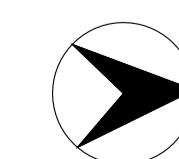


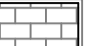



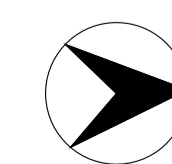
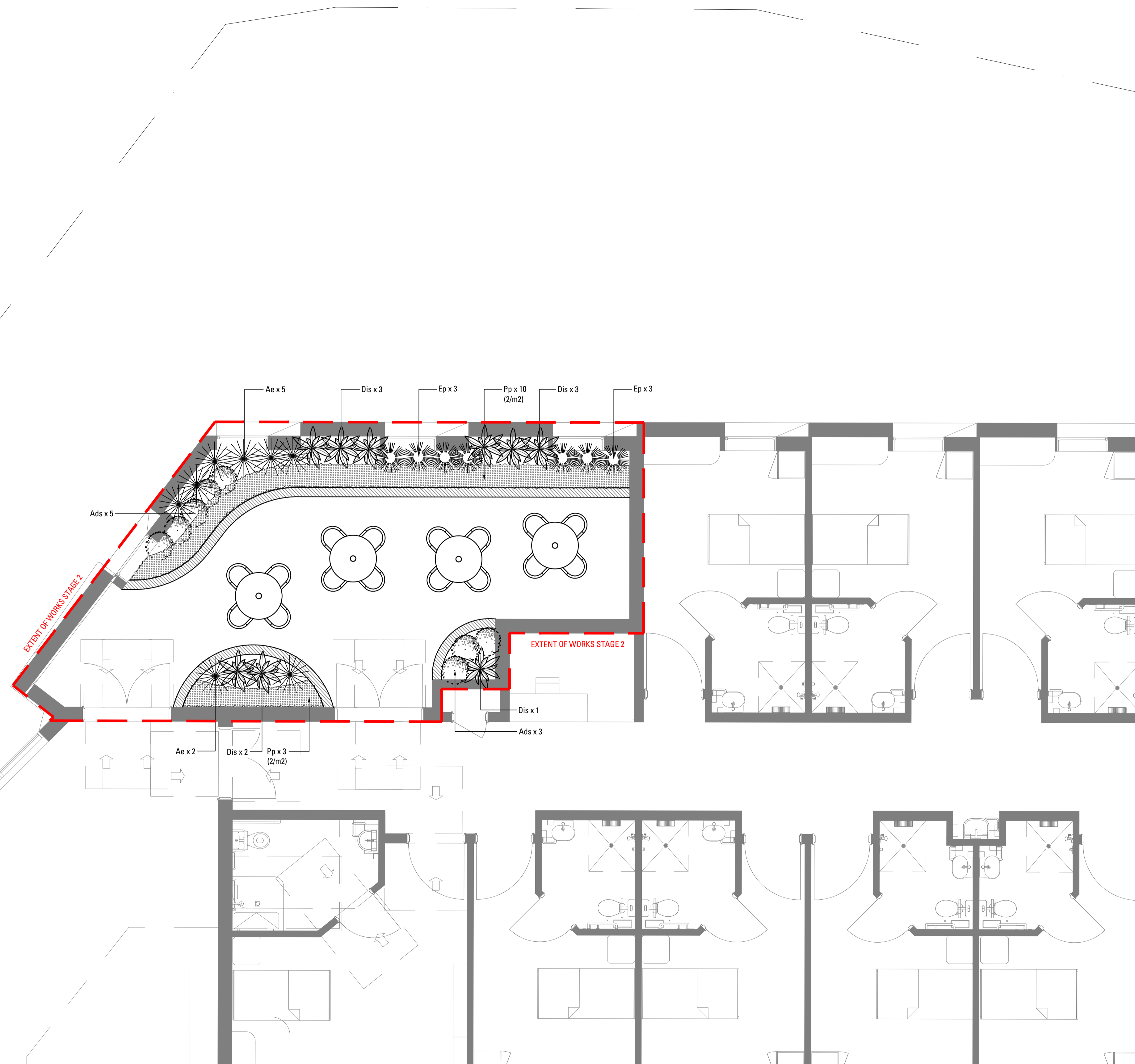
HANGING GARDEN TYPE A

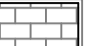
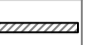
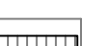




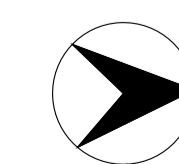
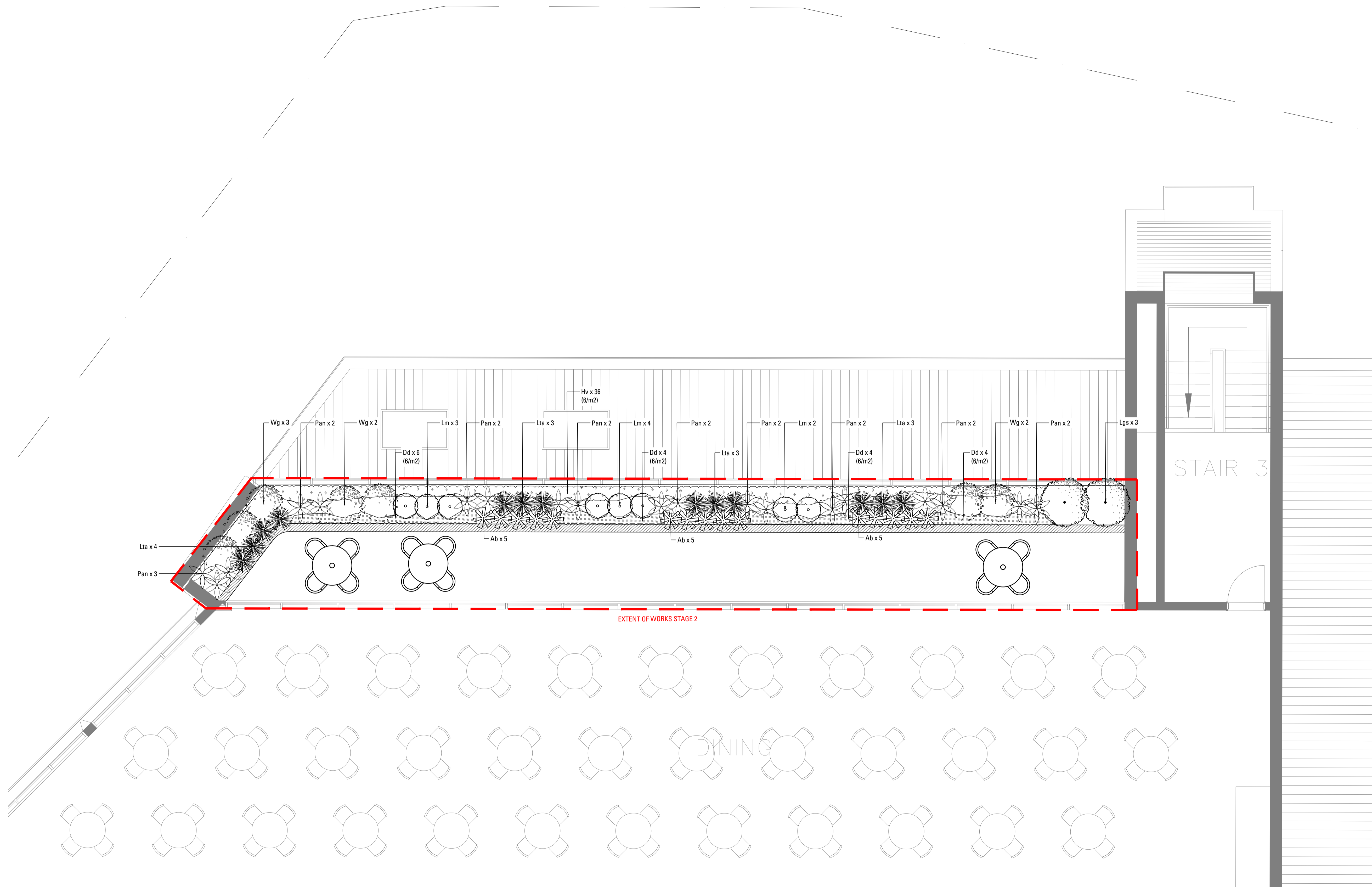
HANGING GARDEN TYPE B

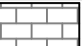
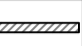





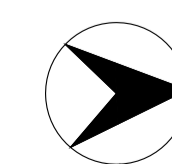
- LEGEND
-  PROPOSED GRANITE PAVING TYPE 1
 -  PROPOSED SHRUB AND ACCENT PLANTING

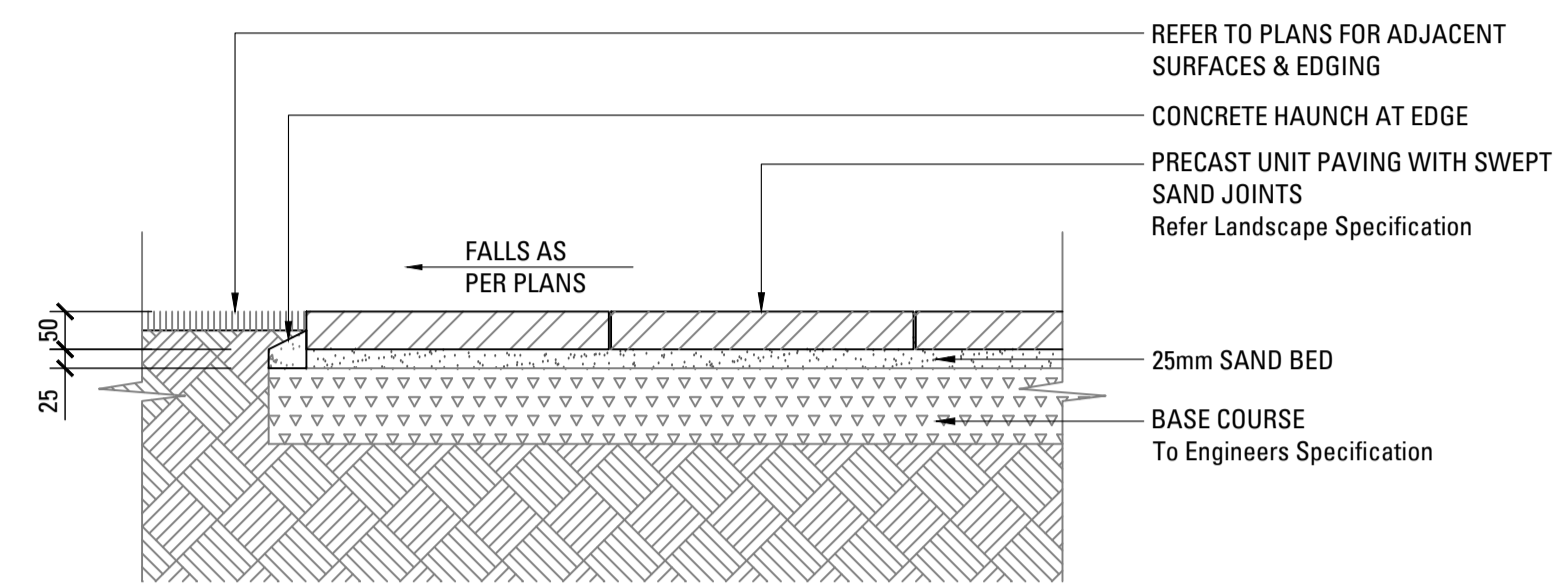


- LEGEND
-  PROPOSED GRANITE PAVING TYPE 1
 -  RETAINING WALL
 -  TIMBER SEAT
 -  PROPOSED SHRUB AND ACCENT PLANTING
 -  PROPOSED GROUNDCOVER PLANTING

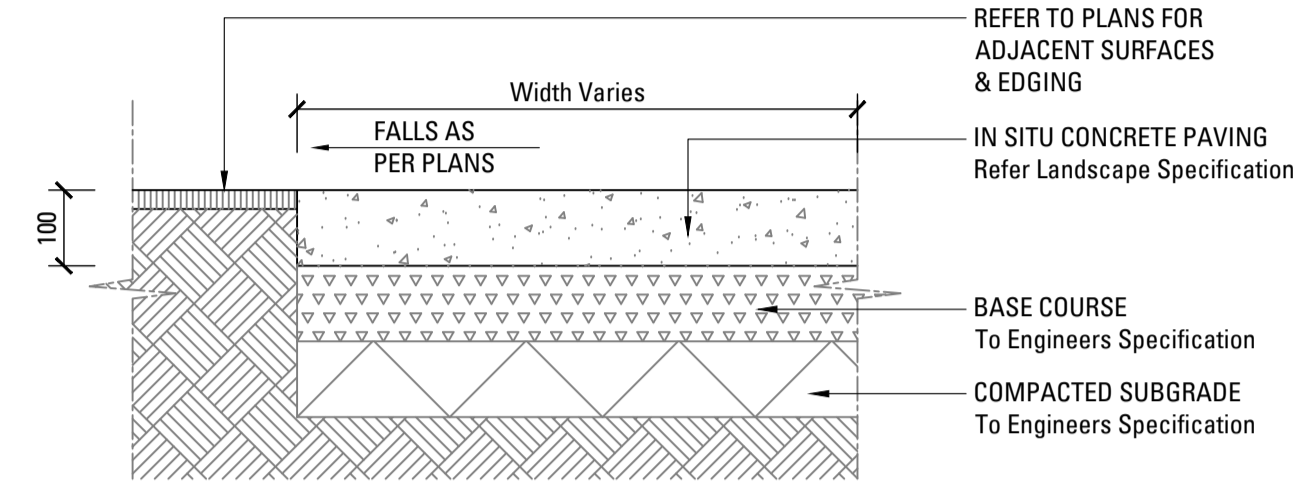


- LEGEND**
-  PROPOSED GRANITE PAVING TYPE 1
 -  RETAINING WALL
 -  TIMBER SEAT
 -  PROPOSED SHRUB AND ACCENT PLANTING
 -  PROPOSED GROUNDCOVER PLANTING

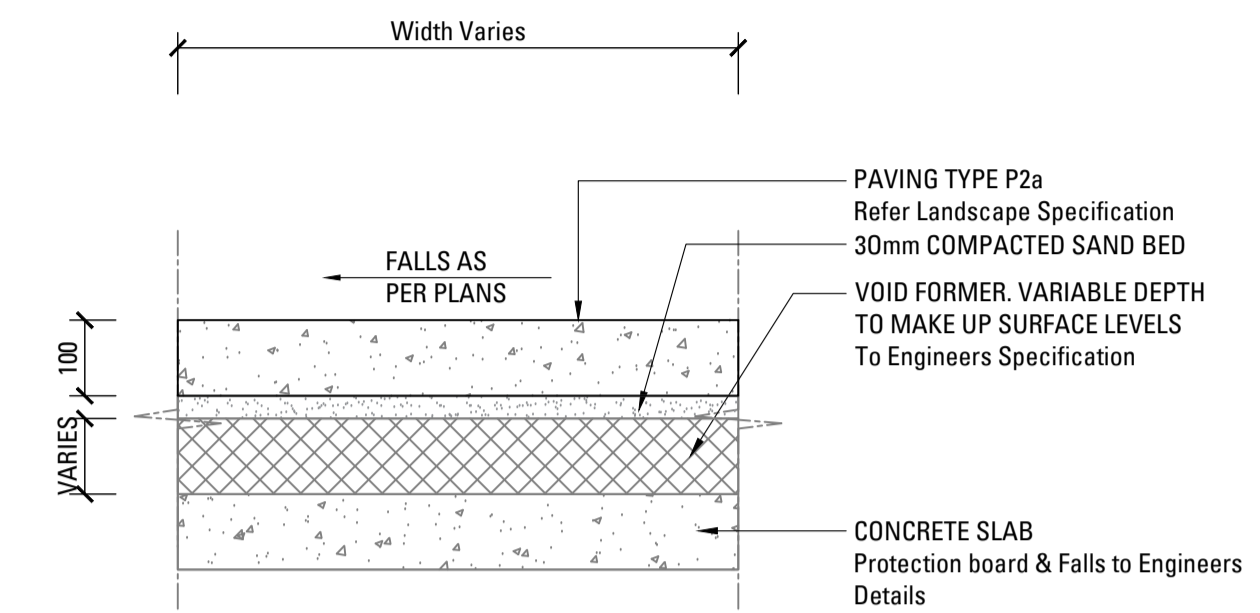




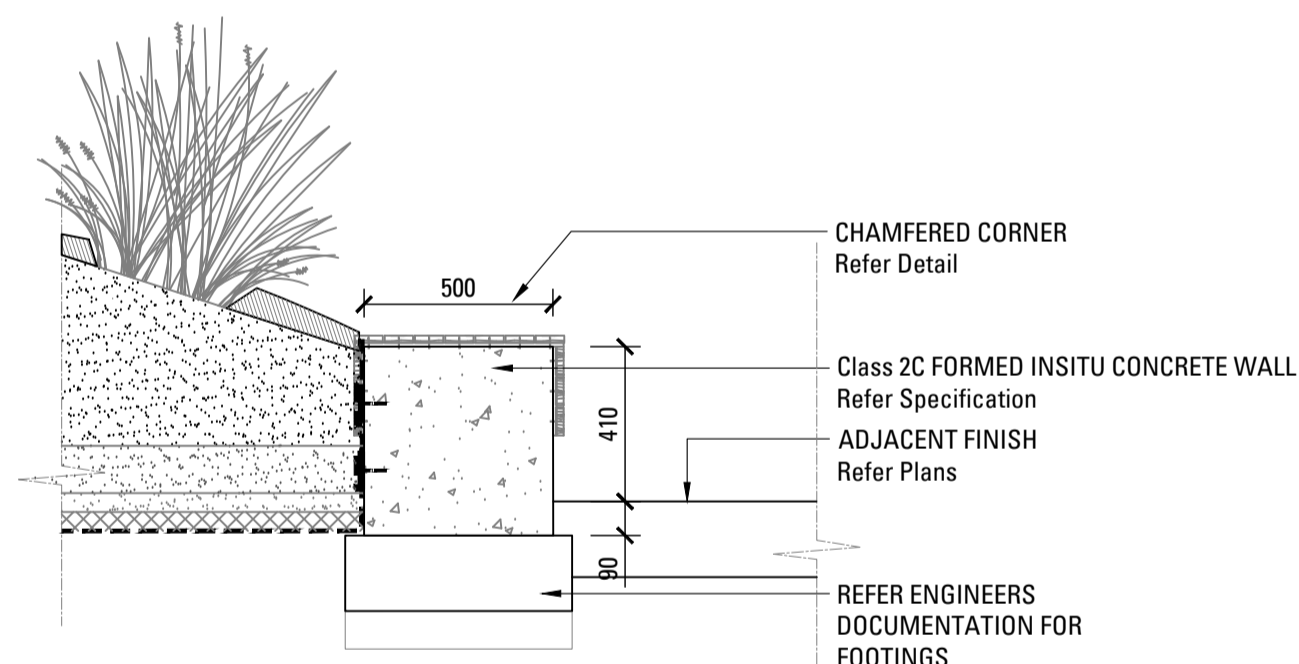
01 PAVING TYPE P1 - UNIT PAVING ON GRADE
SCALE 1:10



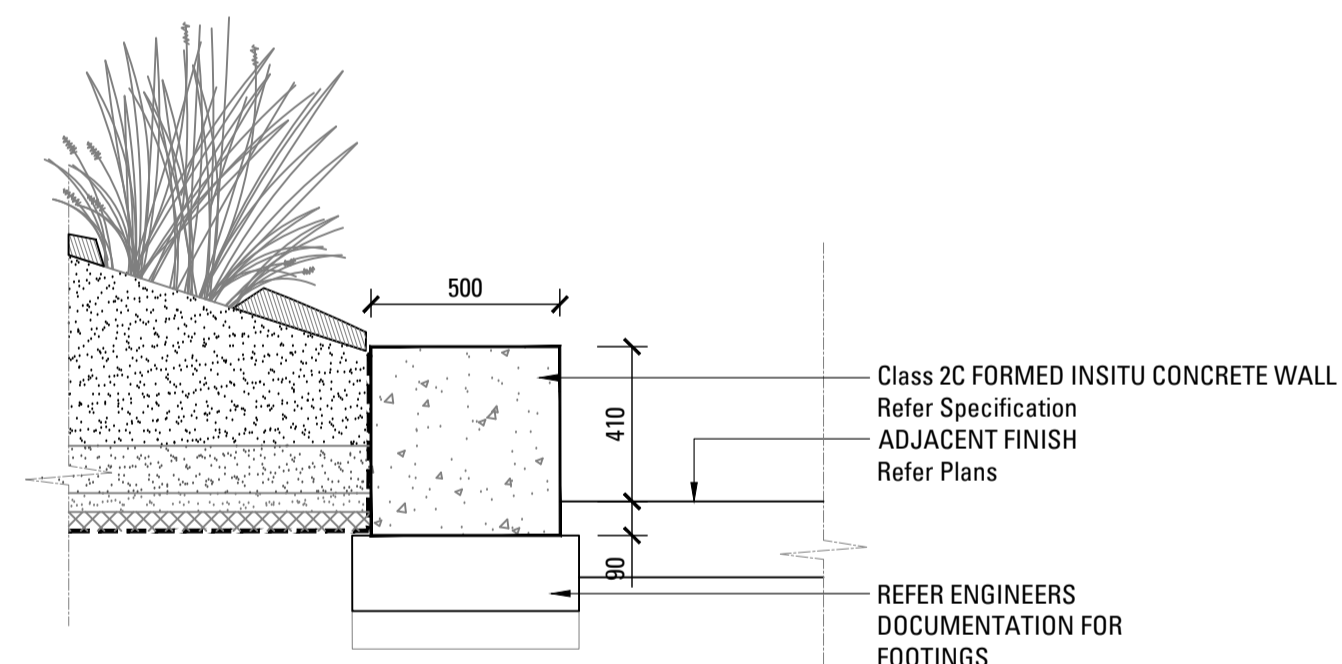
02 PAVING TYPE P2 - INSITU CONCRETE PAVING
SCALE 1:10



03 PAVING TYPE P2a - INSITU CONCRETE PAVING ON SLAB
SCALE 1:10



04 W1 - FORMED INSITU CONCRETE WALL WITH SEAT
SCALE 1:20



05 W1b - FORMED INSITU CONCRETE WALL
SCALE 1:20

LANDSCAPE SPECIFICATION NOTES

SERVICES

BEFORE LANDSCAPE WORK IS COMMENCED THE LANDSCAPE CONTRACTOR IS TO ESTABLISH THE POSITION OF ALL SERVICE LINES AND ENSURE TREE PLANTING IS CARRIED OUT AT LEAST 2 METRES AWAY FROM THESE SERVICES. SERVICE LIDS, VENTS AND HYDRANTS SHALL BE LEFT EXPOSED AND NOT COVERED BY ANY LANDSCAPE FINISHES (TURFING, PAVING, GARDEN BEDS ETC.) FINISH ADJOINING SURFACES FLUSH WITH PIT LIDS.

ARBORIST MANAGEMENT OF TREE PROTECTION

A QUALIFIED AND APPROVED ARBORIST IS TO BE CONTRACTED TO UNDERTAKE OR MANAGE THE INSTALLATION OF PROTECTIVE FENCING, AND TO UNDERTAKE SUCH MEASURES AS HE DEEMS APPROPRIATE TO PRESERVE THE SUBJECT TREES TO BE RETAINED. THE ARBORIST IS TO BE RETAINED FOR THE ENTIRE CONTRACT PERIOD TO UNDERTAKE ONGOING MANAGEMENT AND REVIEW OF THE TREES.

DRAINAGE CELL AND FILTER FABRIC

FOR ON-SLAB AREAS INSTALL AN APPROVED 'DRAINAGE CELL' PRODUCT TO COMPREHENSIVELY COVER THE BOTTOM OF ALL PLANTERS. OVER DRAINAGE CELL TO ON-SLAB AREAS, A POLYFELT GEOTEXTILE LINING (AS SUPPLIED BY 'POLYFELT TS' OR APPROVED EQUIVALENT) IS TO BE INSTALLED TO COVER THE BOTTOM OF ALL PLANTERS, TURNED UP 300MM AND TAPED TO THE PLANTER SIDES TO ENSURE SOIL MIX DOES NOT ESCAPE INTO DRAINAGE OUTLETS/HOLES. INSTALL MIN. 50MM COARSE RIVER SAND OVER ALL GEOTEXTILE LINING PRIOR TO INSTALLATION OF SOIL MIX.

PLANTING MIXTURE

SHALL BE HOMOGENEOUS BLEND OF SOIL AND ADDITIVES IN THE FOLLOWING PROPORTIONS:
 EXISTING SITE SOIL IF SUITABLE OR IMPORTED TOPSOIL 50%
 COMPOST 30%
 D/W SAND 20%
 SOIL TESTING OF EXISTING SITE SOIL IS TO BE UNDERTAKEN TO ASSESS SUITABILITY OF USE AS PLANTING TOPSOIL AND COMPLIANCE WITH AUSTRALIAN STANDARDS.

MULCH APPLICATION

PLACE MULCH TO THE REQUIRED DEPTH, (REFER TO DRAWINGS) CLEAR OF PLANT STEMS, AND RAKE TO AN EVEN SURFACE FINISHING 25MM BELOW ADJOINING LEVELS. ENSURE MULCH IS WATERED IN AND TAMPED DOWN DURING INSTALLATION.

MULCH TYPE

PINE BARK: FROM MATURE TREES, GRADED IN SIZE FROM 15MM TO 30MM, FREE FROM WOOD SLIVERS. DARK BROWN IN COLOUR AND TEXTURE.

COMPOST

SHALL BE WELL ROTTED VEGETATIVE MATERIAL OR ANIMAL MANURE, OR OTHER APPROVED MATERIAL, FREE FROM HARMFUL CHEMICALS, GRASS AND WEED GROWTH AND WITH NEUTRAL PH. PROVIDE A CERTIFICATE OF PROOF OF PH UPON REQUEST.

PLANT MATERIAL

ALL PLANTS SUPPLIED ARE TO CONFORM WITH THOSE SPECIES LISTED IN THE PLANT SCHEDULE ON THE DRAWINGS. GENERALLY PLANTS SHALL BE VIGOROUS, WELL ESTABLISHED, HARDENED OFF, OF GOOD FORM CONSISTENT WITH SPECIES OR VARIETY, NOT SOFT OR FORCED, FREE FROM DISEASE OR INSECT PESTS WITH LARGE HEALTHY ROOT SYSTEMS AND NO EVIDENCE OF HAVING BEEN RESTRICTED OR DAMAGED. TREES SHALL HAVE A LEADING SHOOT. IMMEDIATELY REJECT DRIED OUT, DAMAGED OR UNHEALTHY PLANT MATERIAL BEFORE PLANTING. ALL STOCK IS TO BE CONTAINER GROWN FOR A MINIMUM OF SIX (6) MONTHS PRIOR TO DELIVERY TO SITE.

FERTILISER MASS PLANTING AREAS

FERTILISER SHALL BE 'NUTRICOTE' OR APPROVED EQUIVALENT IN GRANULE FORM INTENDED FOR SLOW RELEASE OF PLANT NUTRIENTS OVER A PERIOD OF APPROXIMATELY NINE MONTHS. THOROUGHLY MIX FERTILISER WITH PLANTING MIXTURE AT THE RECOMMENDED RATE, PRIOR TO INSTALLING PLANTS.

TURF

SHALL BE SIR WALTER BUFFALO, SHIRLEYS NO. 17 OR APPROVED EQUAL LAWN FOOD SHALL BE THOROUGHLY MIXED INTO THE TOPSOIL PRIOR TO PLACING TURF.

TREES IN GRASS AND SUPER ADVANCED TREES

PELLETS SHALL BE IN THE FORM INTENDED TO UNIFORMLY RELEASE PLANT FOOD ELEMENTS FOR A PERIOD OF APPROXIMATELY NINE MONTHS EQUAL TO SHIRLEYS KOKEI PELLETS, ANALYSIS 6.3:1:8:2.9. KOKEI PELLETS SHALL BE PLACED AT THE TIME OF PLANTING TO THE BASE OF THE PLANT, 50MM MINIMUM FROM THE ROOT BALL AT A RATE OF TWO PELLETS PER 300MM OF TOP GROWTH TO A MAXIMUM OF 8 PELLETS PER TREE.

STAKING AND TYING

STAKES SHALL BE STRAIGHT HARDWOOD, FREE FROM KNOTS AND TWISTS, POINTED AT ONE END AND SIZED ACCORDING TO SIZE OF PLANTS TO BE STAKED.

A. 5-15 LITRE SIZE PLANT 1X(1200X25X25MM)

B. 35-75 LITRE SIZE PLANT 2X(1500X38X38MM)

C. 100- GREATER THAN 200LITRE 2X(1800X50X50MM)

TIRES SHALL BE 50MM WIDE HESSIAN WEBBING OR APPROVED EQUIVALENT NAILED OR STAPLED TO STAKE. DRIVE STAKES A MINIMUM ONE THIRD OF THEIR LENGTH, AVOIDING DAMAGE TO THE ROOT SYSTEM, ON THE WINDWARD SIDE OF THE PLANT.

IRRIGATION SYSTEM

SUPPLY AN AUTOMATIC WATERING SYSTEM USING 'TORO IRRIGATION SYSTEM' OR SIMILAR APPROVED, WITH MICRO-JET SPRINKLER HEADS AND LOW DENSITY, RUBBER MODIFIED POLYPROPYLENE RETICULATION, TO INCLUDE FILTERS, BENDS, JUNCTIONS, ENDS AND OTHER ANCILLARY EQUIPMENT. THE LANDSCAPER SHALL NOMINATE HIS SOURCE OF SUPPLY FOR THE WATERING SYSTEM AND OBTAIN APPROVAL FROM THE SUPERINTENDENT BEFORE PLACING ORDERS FOR EQUIPMENT OR SUPPLY.

A SCHEMATIC PLAN OF THE PROPOSED IRRIGATION SYSTEM IS TO BE PREPARED BY THE CONTRACTOR, SHOWING SOLENOIDS, PIPE DIAMETERS, AND ALL NOZZLE AND TRICKLE ATTACHMENT TYPES (INCLUDING SPRAY/HEAD ANGLE), FOR REVIEW BY THE SUPERINTENDENT PRIOR TO INSTALLATION.

THE CONTRACTOR IS TO LIASE WITH THE HYDRAULIC ENGINEER AND COUNCIL AS NECESSARY, TO ENSURE THE IRRIGATION SYSTEM CONFORMS WITH ALL THE COUNCIL AND WATER BOARD CODES AND REQUIREMENTS.

PROVIDE AN AUTOMATIC CONTROLLER THAT PROVIDES FOR TWO WEEK SCHEDULING AND HOURLY MULTI-CYCLE OPERATION. THE CONTROLLER SHALL MANUAL OVERRIDE. PROGRAMMING SHALL BE UNDERTAKEN BY THE CONTRACTOR WHO SHALL ADVISE ON THE OPERATION OF THE SYSTEM.

PROVISION OF SECURE HOUSING FOR THE AUTOMATIC IRRIGATION CONTROLLER TO BE LOCATED IN ASSOCIATION WITH THE LANDSCAPE CONTRACTOR AND LOCATION CONFIRMED BY THE SUPERINTENDENT. WIRING TO CONNECT REMOTE SOLENOID LOCATIONS IS TO BE PROVIDED. THE CONTROLLER SHALL BE LOCATED IN A DRY PLACE, PROTECTED FROM THE WEATHER, AND ALL CABLE CONNECTIONS SHALL BE MADE WITH WATERPROOF CONNECTORS.

WATER SUPPLY POINTS TO BE SUPPLIED BY BUILDER.

IT SHALL BE THE CONTRACTOR'S RESPONSIBILITY TO ENSURE AND GUARANTEE SATISFACTORY OPERATION OF THE IRRIGATION SYSTEM.

AFTER THE SYSTEM HAS BEEN INSTALLED TO THE SATISFACTION OF THE SUPERINTENDENT, THE INSTALLATION SHALL BE TESTED UNDER KNOWN WORKING CONDITIONS. ACCEPTANCE OF THE INSTALLED PLANT AND EQUIPMENT SHALL BE SUBJECT TO THESE BEING SATISFACTORY.

TREATED PINE TIMBER EDGING

TIMBER EDGE: 100 X 25MM CCA TREATED RADIATA PINE TIMBER STAKES: 50 X 50 X 500MM CCA TREATED RADIATA PINE-SHARPENED AT ONE END. INSTALL IN LOCATIONS SHOWN ON THE DRAWINGS FLUSH TO FINISHED SURFACE LEVELS.

TURF

TURF ALL LANDSCAPE AREAS AS SHOWN ON THE LANDSCAPE DRAWINGS. TURF IS TO HAVE AN EVEN THICKNESS OF NOT LESS THAN 25MM. OBTAIN TURF FROM AN APPROVED GROVER. FURNISH A WARRANTY FROM THE GROVER THAT THE TURF IS FREE FROM WEEDS AND OTHER FOREIGN MATTER. DELIVER TURF TO THE SITE WITHIN 24 HOURS OF BEING CUT, AND LAY IT WITHIN 24 HOURS OF BEING DELIVERED.

TO PREPARE GRADED AREAS TO RECEIVE TURF, EXCAVATE THE AREA AND CULTIVATE SO AS TO ALLOW FOR IMPORTING OF 100MM OF TURF UNDERLAY SOIL. REMOVE ALL STONES OVER 50MM Ø AND REMOVE ALL WEEDS AND FOREIGN MATTER. SPREAD SOIL MIX A.B.S TO A DEPTH OF 100MM AND GRADE TO APPROPRIATE LEVELS TO ACHIEVE GENERAL EVEN GRADES TO DRAINAGE OUTLETS INSTALLED BY OTHERS.

LAY THE TURF ALONG THE LAND CONTOURS WITH STAGGERED, CLOSE BUTTED JOINTS, SO THAT THE FINISHED TURF SURFACE IS FLUSH WITH ADJACENT FINISHED SURFACES OF PAVING AND THE LIKE. AS SOON AS PRACTICABLE AFTER LAYING, ROLL THE TURF WITH A ROLLER WEIGHING NOT MORE THAN 90KG PER METRE OF WIDTH FOR SANDY OR LIGHT SOILS.

WATER AS NECESSARY TO KEEP THE SOIL MOIST TO A DEPTH OF 100MM. PROTECT NEWLY TURFED AREAS AGAINST TRAFFIC UNTIL GRASS IS ESTABLISHED. FERTILISE TWO WEEKS AFTER LAYING TURF A.B.S

TOP DRESS: THE TURF WHEN IT IS ESTABLISHED TO A DEPTH OF 10MM WITH COARSE WASHED RIVER SAND. RUB THE DRESSING WELL INTO THE JOINTS AND CORRECT ANY UNEVENNESS IN THE TURF SURFACES.

LANDSCAPE MAINTENANCE PROGRAM

MAINTENANCE SHALL MEAN THE CARE AND MAINTENANCE OF THE LANDSCAPE WORKS BY ACCEPTED HORTICULTURAL PRACTICE AS RECTIFYING ANY DEFECTS THAT BECOME APPARENT IN THE LANDSCAPE WORKS UNDER NORMAL USE. THIS SHALL INCLUDE, BUT SHALL NOT BE LIMITED TO, WATERING, MOWING, FERTILISING, RESEEDING, RETURNING, WEEDING, PEST AND DISEASE CONTROL, STAKING AND TYING, REPLANTING, CULTIVATION, PRUNING, AERATING, RENOVATING, TOP DRESSING, MAINTAINING THE SITE IN A NEAT AND TIDY CONDITION AS FOLLOWS:-

GENERAL

THE LANDSCAPE CONTRACTOR SHALL MAINTAIN THE LANDSCAPE WORKS FOR THE TERM OF THE MAINTENANCE (OR PLANT ESTABLISHMENT) PERIOD TO THE SATISFACTION OF THE COUNCIL. THE LANDSCAPE CONTRACTOR SHALL ATTEND TO THE SITE ON A WEEKLY BASIS. THE MAINTENANCE PERIOD SHALL COMMENCE AT PRACTICAL COMPLETION AND CONTINUE FOR A PERIOD OF TWENTY SIX (26) WEEKS.

WATERING

GRASS, TREES AND GARDEN AREAS SHALL BE WATERED REGULARLY SO AS TO ENSURE CONTINUOUS HEALTHY GROWTH.

RUBBISH REMOVAL

DURING THE TERM OF THE MAINTENANCE PERIOD THE LANDSCAPE CONTRACTOR SHALL REMOVE RUBBISH THAT MAY OCCUR AND REOCCUR THROUGHOUT THE MAINTENANCE PERIOD. THIS WORK SHALL BE CARRIED OUT REGULARLY SO THAT AT WEEKLY INTERVALS THE AREA MAY BE OBSERVED IN A COMPLETELY CLEAN AND TIDY CONDITION.

REPLACEMENTS

THE LANDSCAPE CONTRACTOR SHALL REPLACE ALL PLANTS THAT ARE MISSING, UNHEALTHY OR DEAD AT THE LANDSCAPE CONTRACTOR'S COST. REPLACEMENTS SHALL BE OF THE SAME SIZE, QUALITY AND SPECIES AS THE PLANT THAT HAS FAILED UNLESS OTHERWISE DIRECTED BY THE LANDSCAPE ARCHITECT. REPLACEMENTS SHALL BE MADE ON A CONTINUING BASIS NOT EXCEEDING TWO (2) WEEKS AFTER THE PLANT HAS DIED OR IS SEEN TO BE MISSING.

STAKES AND TIES

THE LANDSCAPE CONTRACTOR SHALL REPLACE OR ADJUST PLANT STAKES, AND TREE GUARDS AS NECESSARY OR AS DIRECTED BY THE LANDSCAPE ARCHITECT. REMOVE STAKES AND TIES AT THE END OF THE MAINTENANCE PERIOD IF SO DIRECTED.

PRUNING

TREES AND SHRUBS SHALL BE PRUNED AS DIRECTED BY THE LANDSCAPE ARCHITECT. PRUNING WILL BE DIRECTED AT THE MAINTENANCE OF THE DENSE FOLIAGE OR MISCELLANEOUS PRUNING AND BENEFICIAL TO THE CONDITION OF THE PLANTS. ANY DAMAGED GROWTH SHALL BE PRUNED. ALL PRUNED MATERIAL SHALL BE REMOVED FROM THE SITE.

MULCHED SURFACES

ALL MULCHED SURFACES SHALL BE MAINTAINED IN A CLEAN AND TIDY CONDITION AND BE REINSTATED IF NECESSARY TO ENSURE THAT A DEPTH OF 75MM IS MAINTAINED. ENSURE MULCH IS KEPT CLEAR OF PLANT STEMS AT ALL TIMES.

PEST AND DISEASED CONTROL

THE LANDSCAPE CONTRACTOR SHALL SPRAY AGAINST INSECT AND FUNGUS INFESTATION WITH ALL SPRAYING TO BE CARRIED OUT IN ACCORDANCE WITH THE MANUFACTURER'S DIRECTIONS. REPORT ALL INSTANCES OF PESTS AND DISEASES (IMMEDIATELY THAT THEY ARE DETECTED) TO THE LANDSCAPE ARCHITECT.

GRASS AND TURF AREAS

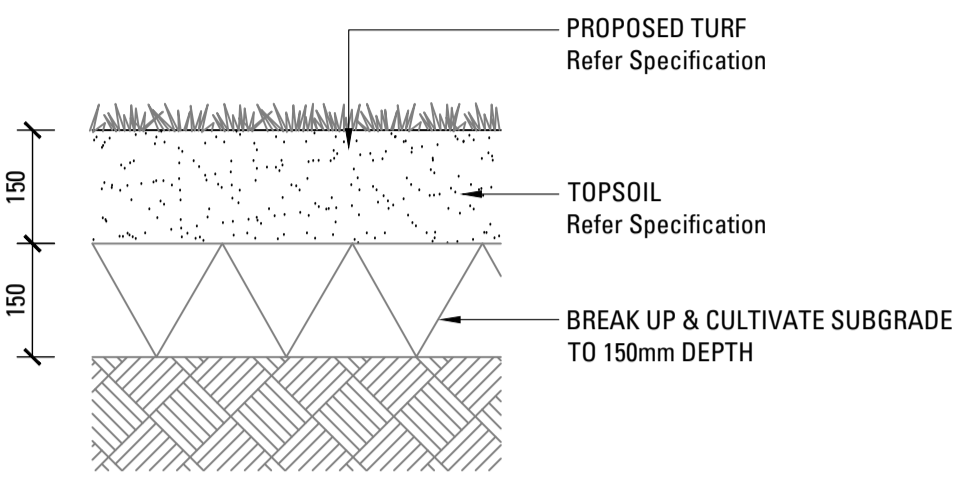
THE LANDSCAPE CONTRACTOR SHALL MAINTAIN ALL GRASS AND TURF AREAS BY WATERING, WEEDING, DRESSING, ROLLING, MOWING, TRIMMING OR OTHER OPERATIONS AS NECESSARY. SEED AND TURF SPECIES SHALL BE THE SAME AS THE ORIGINAL SPECIFIED MIXTURE. GRASS AND TURF AREAS SHALL BE SPRAYED WITH APPROVED SELECTIVE HERBICIDE AGAINST BROAD LEAFED WEEDS AS REQUIRED BY THE LANDSCAPE ARCHITECT AND IN ACCORDANCE WITH THE MANUFACTURER'S DIRECTIONS. GRASS AND TURF AREAS SHALL BE FERTILISED ONCE A YEAR IN AUTUMN WITH DYNAMIC LIFTER FOR LAWNS AT A RATE OF 20KG PER 100M2. FERTILISER SHALL BE WATERED IN IMMEDIATELY AFTER APPLICATION. IRREGULARITIES IN THE GRASS AND TURF SHALL BE WATERED IN IMMEDIATELY AFTER APPLICATION. GRASS AND TURF AREAS SHALL BE KEPT MOWN TO MAINTAIN A HEALTHY AND VIGOROUS SWARD. MOWING HEIGHT: 30-50MM.

WEED ERADICATION

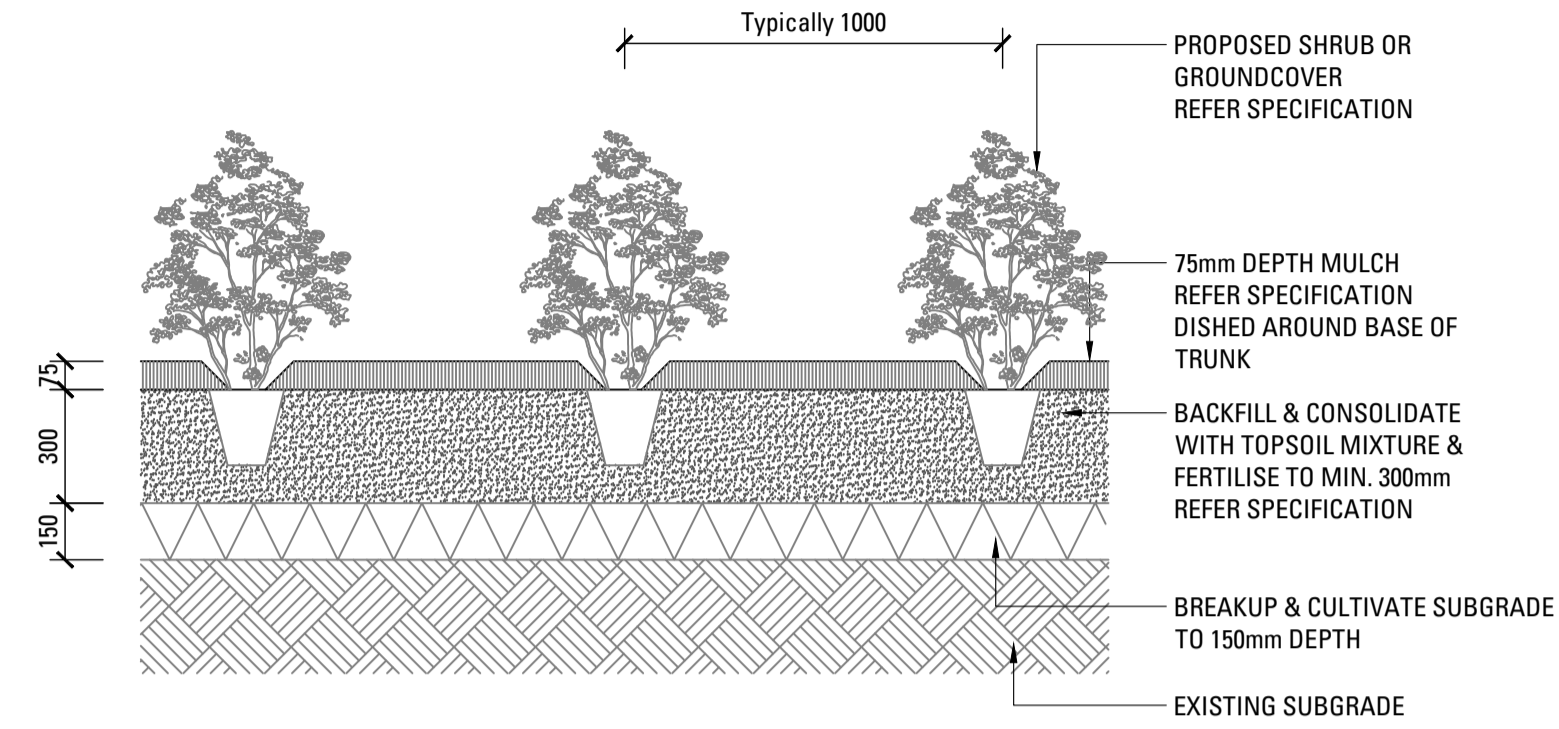
ERADICATE WEEDS BY ENVIRONMENTALLY ACCEPTABLE METHODS USING A NON-RESIDUAL GLYPHOSATE HERBICIDE (EG. 'ROUNDUP') IN ANY OF ITS REGISTERED FORMULAE, AT THE RECOMMENDED MAXIMUM RATE. REGULARLY REMOVE BY HAND, WEED GROWTH THAT MAY OCCUR OR RECUR THROUGHOUT GRASSED, PLANTED AND MULCHED AREAS. REMOVE WEED GROWTH FROM AN AREA 750MM DIAMETER AROUND THE BASE OF TREES IN GRASSED AREAS. CONTINUE ERADICATION THROUGHOUT THE COURSE OF THE WORKS AND DURING THE MAINTENANCE PERIOD.

SOIL SUBSIDENCE

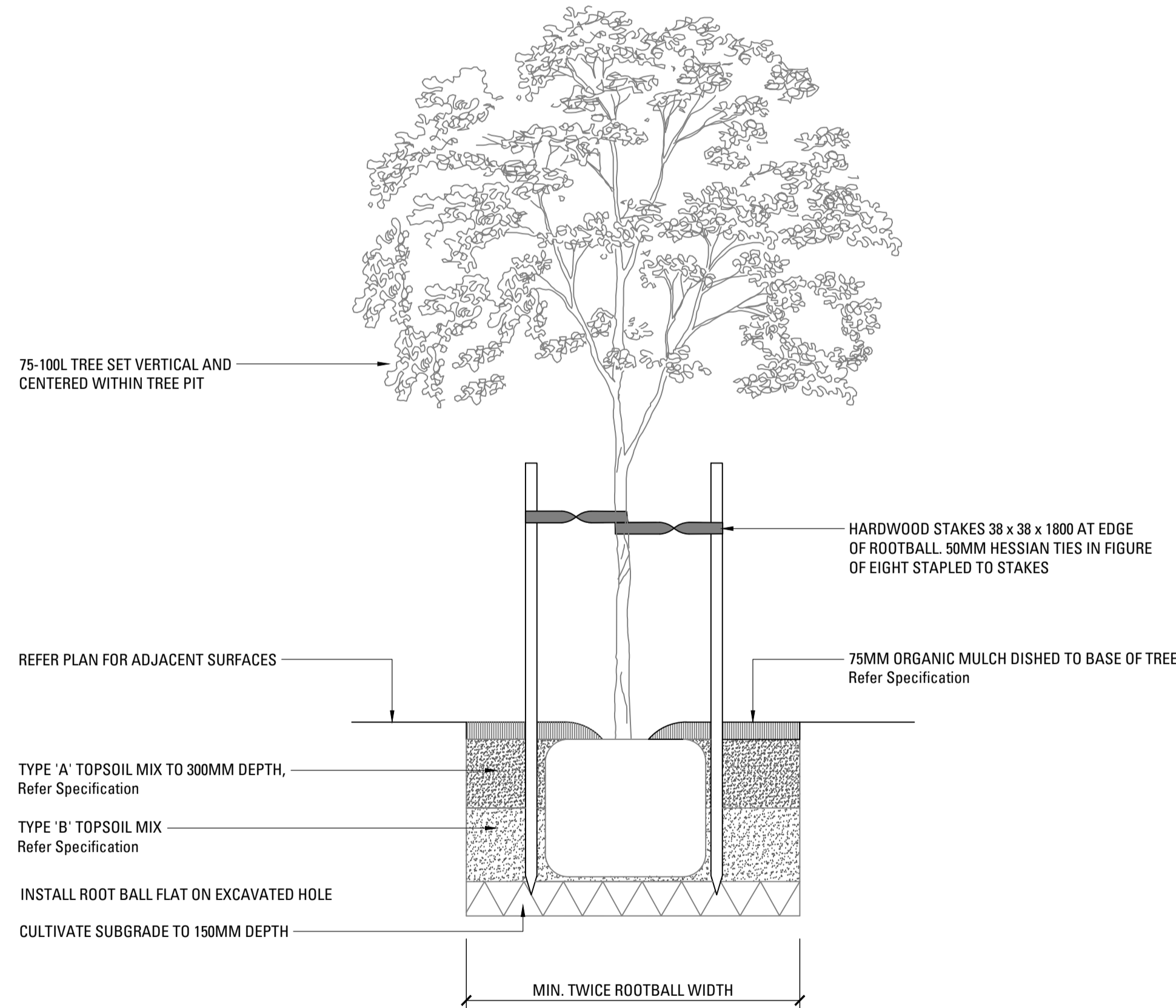
ANY SOIL SUBSIDENCE OR EROSION WHICH MAY OCCUR AFTER THE SOIL FILLING AND PREPARATION OPERATIONS SHALL BE MADE GOOD BY THE LANDSCAPE CONTRACTOR AT NO COST TO THE CLIENT.



01
701 TF1 - TURF ON GRADE
SCALE 1:10



02
701 LARGE SHRUB IN PLANTING BED
SCALE 1:20



03
701 TREE PLANTING 75-100L
SCALE 1:20