

ISSUE	DATE	FOR
A	13/08/2021	DRAFT SSQA ISSUE
B	10/11/2021	SSQA ISSUE
C	14/06/2022	SSQA UPDATES

KEY/LEGEND

SSSA BOUNDARY LINE

CLIENT



PROJECT MANAGERS

CBRE
TEL 02 9333 3333

ARCHITECT
BVN Architecture
TEL 02 8297 7200

STRUCTURE / CIVIL
ACOR
TEL 02 9438 5098

MECHANICAL
ARUP
TEL 02 9320 9320

ELECTRICAL / COMM
JHA
TEL 02 9437 1000

HYDRAULIC
ARUP
TEL 02 9320 9320

FIRE ENGINEERING
ARUP
TEL 02 9320 9320

LANDSCAPE
ARCADIA
TEL 02 8571 2900

BCA / DDA
BLACKETT MAGUIRE + GOLDSMITH
TEL 02 9211 7777

PROJECT

NEPEAN HOSPITAL - STAGE 2

DERBY ST
KINGSWOOD NSW 2747

NEPEAN

BVN PROJECT NUMBER
1903020.000

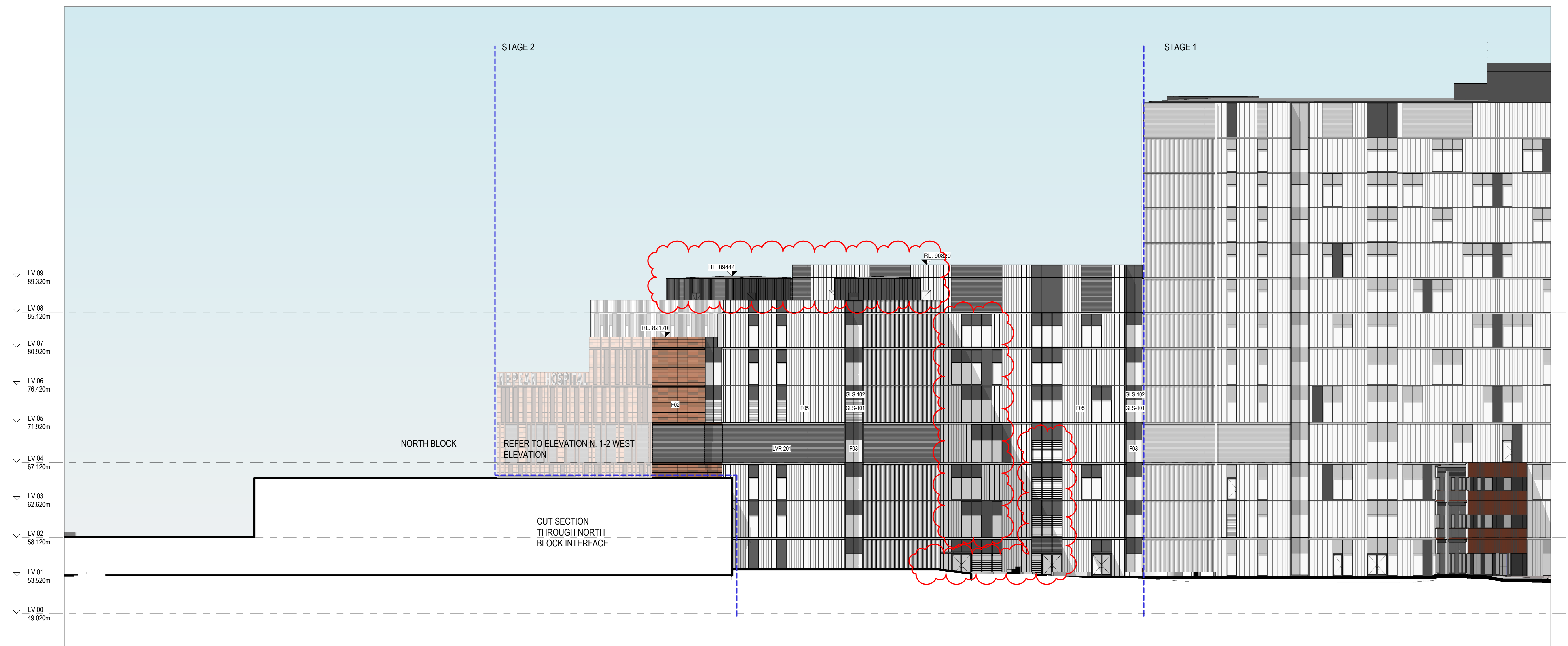
DRAWING KEY

SCALE
1:200 @A0 DO NOT SCALE
0 1000 4000 8000
1:200mm

DRAWN BY: - CHECKED BY: -
DESIGNED BY: - APPROVED BY: -
STATUS
SSDA
DRAWING

FACADE ELEVATION - SOUTH ELEVATION

DRAWING NUMBER NHR-BVN-DRW-ARC-TB2-A0-302	ISSUE C
--	------------



1 FACADE - SOUTH ELEVATION - GENERAL ARRANGEMENT
1:200

FACADE TYPES		GLAZING TYPES	
F01 - Natural masonry / brick. Varied format and orientation of units to create texture and visual relief.	F05 - Substrate on Steel Frame prefinished metal cladding. Mixture of "Profile" and "Flat" metal cladding.	GLS-101	Transparent glazing.
F02 - Substrate on Steel Frame with Terracotta (Natural) Tile system. Facade depth varies to create visual relief.	F06 - Substrate on Steel Frame prefinished aluminium cassette cladding. Sunshade louvre system integrated.	GLS-102	Colourback glazing Dark Grey.
F03 - Window wall system. Mixture transparent glazing panel & colourback glazing depending on location.	F07 - Sunshade terracotta louvre system with integrated hook system.	LOUVER TYPES	
F04 - Shopfront glazing system with structural mullions. Operable DGU louvres for mixed mode ventilation.	F08 - Substrate on Steel Frame prefinished compressed fibre cement cladding.	LVR-201	Horizontal metal louvres - Dark Grey